

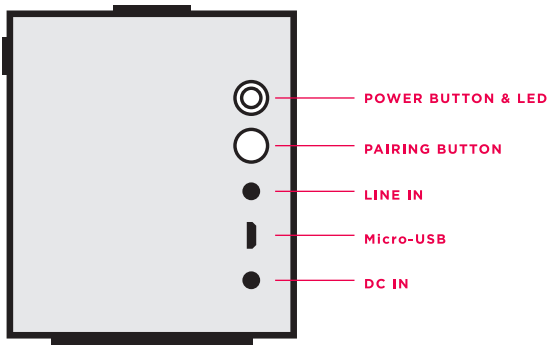
BIG JAMBOX™

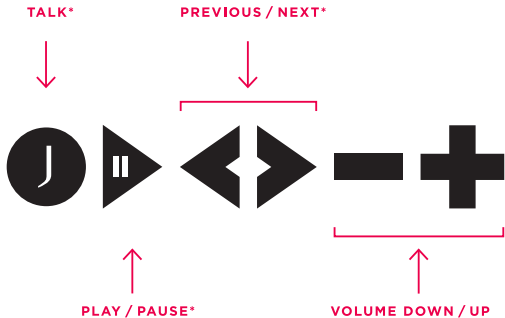
by JAWBONE®

QUICK START GUIDE



BUTTONS & CONTROLS

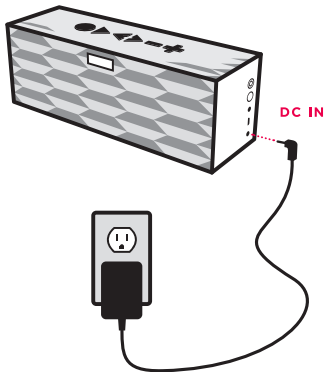




* Only works when connected wirelessly via Bluetooth®

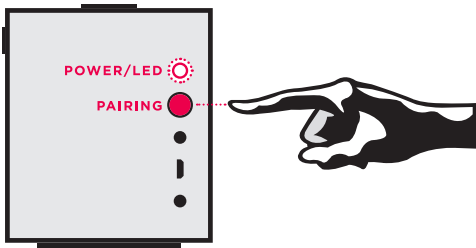
CHARGE IT UP

Plug BIG JAMBOX™ into an outlet using the included wall charger. The LED will turn white when fully charged. Full charge takes about 2.5 hours.



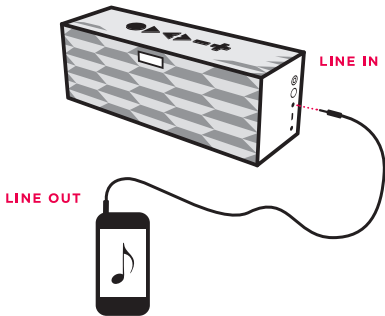
OPTION 1 CONNECT WIRELESSLY

When turned on for the first time, BIG JAMBOX™ will automatically enter pairing mode. To pair, go to Bluetooth® settings on your smartphone, tablet, computer or device and connect to “BIG JAMBOX by Jawbone”. Enter “0000” if asked for a passcode. To enter pairing mode thereafter, hold the pairing button until the LED flashes red & white.



OPTION 2 PLUG & PLAY

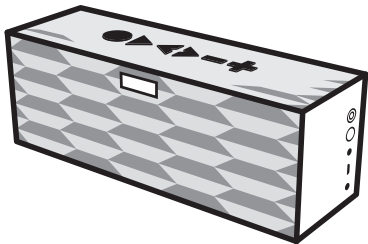
Connect BIG JAMBOX™ to any device with a headphone jack or line out using the included 3.5mm audio cable. Please note, the TALK, PLAY/PAUSE, PREVIOUS & NEXT buttons on BIG JAMBOX only work when connected wirelessly via Bluetooth®.



SPEAKERPHONE

Use BIG JAMBOX™ as a portable speakerphone when connected wirelessly via Bluetooth®. To answer/end a call, press the TALK button. To mute/unmute the built-in microphone, press the PLAY/PAUSE button.

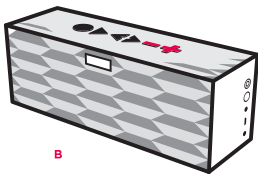
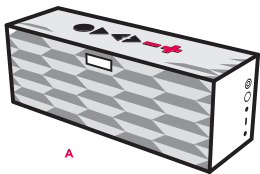
BUILT-IN MICROPHONE



TRUE WIRELESS MODE

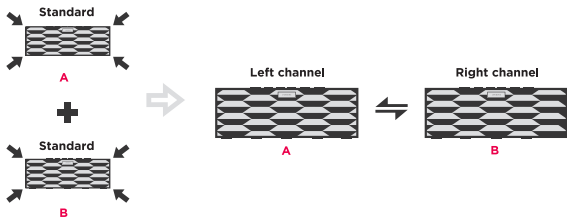
In True Wireless mode, two BIG JAMBOX™ can be connected as a stereo pair with dedicated sound channels.

To enter True Wireless mode, connect BIG JAMBOX™ A to source device wirelessly via Bluetooth®. Turn on BIG JAMBOX B, hold **PLUS & MINUS** simultaneously on both A and B until hear voice prompt “Audio on”. Release the buttons, wait 3-5 seconds until hear another voice prompt “Paired”, the pair of BIG JAMBOX™ have now enter True Wireless mode successfully.



In True Wireless mode, BIG JAMBOX™ A is dedicated to the left channel and BIG JAMBOX B is dedicated to the right channel. To exit True Wireless mode, hold **PLUS & MINUS** simultaneously on both A and B until hear voice prompt “Audio off”. Sound will continue to play on BIG JAMBOX™ A.

After two BIG JAMBOX™ have been paired for the first time, they will automatically connect the next time they are powered on together.



REFERENCES

ACTION

GENERAL

Power On/Off _____	Hold POWER button
Power On/Off Without Sound _____	Hold MINUS button, then hold POWER button
Activate Pairing Mode* _____	Hold PAIRING button until LED flashes red & white
Re-Connect to Paired Device* _____	Press TALK button
Turn True Wireless On/Off* _____	Hold PLUS & MINUS buttons
Hear Battery Status* _____	Press TALK button
Play Audio Demo* _____	Hold TALK, PLUS & MINUS buttons

SPEAKERPHONE**

Answer/End Call _____	Press TALK button
Activate Voicemail/Dial Apps _____	Hold TALK button
Switch Between Calls _____	Press TALK button
End Call & Answer Incoming _____	Press TALK button 2x
Mute/Unmute Microphone _____	Press PLAY/PAUSE button
Redial Last Number* _____	Press TALK button 2x

* Not during a call ** Bluetooth® only

FOR MORE INFORMATION



VISIT JAWBONE.COM/CONTACT-US
for support



GO TO JAWBONE.COM/TERMS
for warranty info



FOLLOW us on
WWW.FACEBOOK.COM/JAWBONE



TWITTER.COM/JAWBONE



WWW.INSTAGRAM.COM/JAWBONE

SAFETY INFORMATION

WARNING

Please read these safety warnings and cautions carefully to ensure your personal safety and prevent property damage.

Fire and Electric Shock Hazard

- Do not expose your Jawbone® Speaker to liquid, moisture, humidity, or rain. Do not use the Jawbone® Speaker near a bathtub, sink, sauna, pool, or steam room. Exposure of the Jawbone® Speaker to moisture could result in electric shock.
- Do not drop, disassemble, open, crush, bend, deform, puncture, shred, microwave, incinerate, paint, or insert foreign objects into the Jawbone® Speaker. Such actions could result in electric shock.
- Clean the Jawbone® Speaker only with a dry cloth.
- Do not expose your Jawbone® Speaker to extremely high or low temperatures.
- Do not leave your Jawbone® Speaker in direct sunlight for extended periods of time.
- Do not leave your Jawbone® Speaker near

open flames such as cooking burners, candles, or fireplaces.

- Do not block any ventilation openings.

Battery/Charger Hazard

- Do not dispose of your Jawbone® Speaker in a fire. The battery could explode causing injury or death.
- Only charge the battery in accordance with the user instructions supplied with the Jawbone® Speaker.
- Do not attempt to disassemble the Jawbone® Speaker charger or force open the built-in battery because this may result in electric shock.
- Do not charge the Jawbone® Speaker in damp areas or in extremely high or low temperatures because this could result in electric shock.
- Do not clean the Jawbone® Speaker when it is being charged. Always unplug the charger first before cleaning the Jawbone® Speaker.

Automobile Accident Hazard

- Do not leave or store the Jawbone®

Speaker or any of its accessories near or over your automobile's air bag because serious injury may result when an air bag deploys.

Fall Hazard

- Do not place the Jawbone® Speaker on high surfaces such as shelves. During music playback the Jawbone® Speaker may move which could cause the Jawbone® Speaker to shift and fall off of the edge.

CAUTION

- Do not use abrasive cleaners to clean your Jawbone® Speaker because this could cause scratches and damage.
- Do not bring your Jawbone® Speaker in to contact with any sharp objects because this could cause scratches and damage.
- Do not insert anything into your Jawbone® Speaker unless otherwise specified in the user instructions. This may damage the internal components.
- Do not attempt to repair, modify, or

disassemble your Jawbone® Speaker yourself, it does not contain any user-serviceable components.

- Do not attempt to replace your Jawbone® Speaker battery, it is built-in and is not changeable.
- Use only the manufacturer supplied charger to charge your Jawbone® Speaker. Other chargers may look similar, but using them could result in electric shock and could damage the Jawbone® Speaker.
- Observe all signs and displays that require an electrical device or RF radio product to be switched off in designated areas.
- Turn off your Jawbone® Speaker prior to boarding an aircraft. Do not use the Jawbone® Speaker inside an aircraft unless allowed by your airline.
- Dispose of the Jawbone® Speaker and the Jawbone® Speaker's battery in accordance with local regulations. Do not dispose of the battery with regular household waste.

FCC STATEMENT This equipment has been tested and found to comply with the limits for a Class B digital device, pursuant to Part 15 of the FCC Rules. These limits are designed to provide reasonable protection against harmful interference in a residential installation. This equipment generates, uses, and can radiate radio frequency energy and, if not installed and used in accordance with the instructions, may cause harmful interference to radio communications. However, there is no guarantee that interference will not occur in a particular installation. If this equipment does cause harmful interference to radio or television reception, which can be determined by turning the equipment off and on, the user is encouraged to try to correct the interference by one of the following measures:

- Reorient or relocate the receiving antenna.
- Increase the separation between the equipment and receiver.
- Connect the equipment into an outlet on a circuit different from that to which the receiver is connected.
- Consult the dealer or an experienced radio/TV technician for help.

FCC NOTICE This device complies with Part 15 of the FCC Rules. Operation is subject to the following two conditions:

1. This device may not cause harmful interference, and
2. This device must accept any interference received, including interference that may cause undesired operation.

FCC CAUTION

- Any changes or modifications not expressly approved by the party responsible for compliance could void the user's authority to operate this equipment.
- This device and its antenna(s) must not be co-located or operating in conjunction with any other antenna or transmitter.

FCC ID: 2ATQEJ2011

To locate the FCC identification numbers, please look on the underside of the Jawbone® Speaker.

BT ID: D046819

Please only use with the power supply adapter provided.

©2011 JAWBONE. ALL RIGHTS RESERVED.



JAWBONE.COM