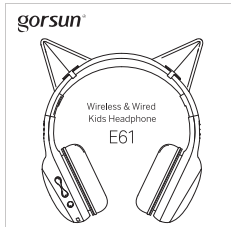
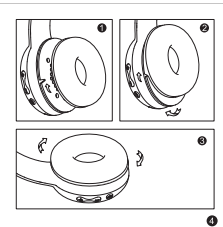


英



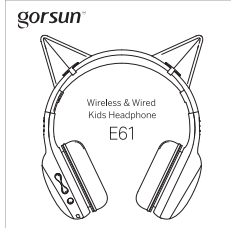
1. Specifications
2. Button Function
3. Function Description
4. Button Guide
5. Bluetooth mode

Subsequent pairing: 3 seconds after powering on, it will automatically search and connect the main device which paired last time.
Warning voice of maximum volume: "Dad"
Power saving mode: headset will automatically power off after pairing successful for 5 minutes.



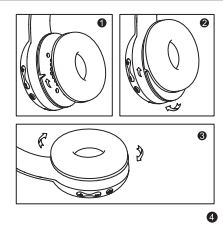
NOTE:
This equipment has been tested and found to comply with the requirements for a Class B digital product...

德



1. Spezifikationen
2. Tastenfunktion
3. Funktionsbeschreibung
4. Tastenführung
5. Modus Bluetooth

Nachfolgendes Pairing: 3 Sekunden nach dem Einschalten wird das zuletzt gepaarte Smartphone automatisch gesucht und verbunden.
Warnstimme mit maximalem Lautstärke: "Dad"



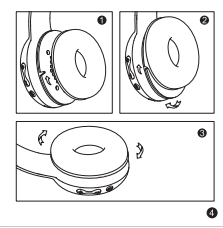
Hinweis:
Dieses Gerät wurde getestet und entspricht den Grenzwerten für digitale Geräte der Klasse B gemäß Teil 15 oder dem FCC-Störmaß...

法



1. Spécifications
2. Fonction des boutons
3. Description des fonctions
4. Fonctions des boutons
5. Mode Bluetooth

Remarque:
L'appareil a été testé et conforme aux limites d'un appareil numérique de classe B, conformément à la partie 15 ou aux règles de la FCC...



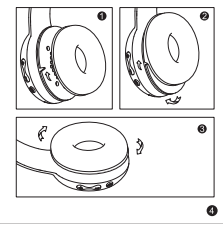
REMARQUE:
Cet équipement a été testé et déclaré conforme aux limites d'un appareil numérique de classe B, conformément à la partie 15 ou aux règles de la FCC...

意



1. Specificazioni
2. Funzioni pulsanti
3. Descrizione funzioni
4. Funzioni dei pulsanti
5. Modalità Bluetooth

Accoppiamento successivo: 3 secondi dopo l'accensione, effettua automaticamente la ricerca e collega il dispositivo smart che è il più recente abbinato.



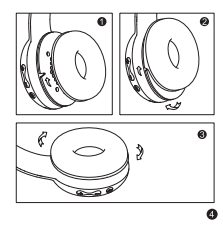
NOTA:
Questo apparecchio è stato testato e trovato conforme ai limiti per un digitale di Classe B, di conformità con la Parte 15 della FCC...

西



1. Especificaciones
2. Funciones de los botones
3. Descripción de funciones
4. Descripción de los botones
5. Modo Bluetooth

Emparejamiento subsiguiente: 3 segundos después de encender Bluetooth y conectará automáticamente con el dispositivo con el que hayas conectado la última vez.



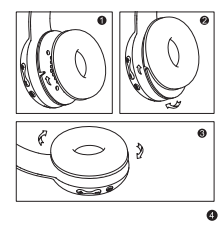
NOTA:
Este equipo ha sido probado y cumple con los límites para un digital de Clase B, de conformidad con la Parte 15 de las Reglas de la FCC...

俄



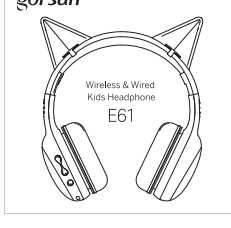
1. Технические характеристики
2. Функции кнопок
3. Описание функций
4. Описание кнопок
5. Режим Bluetooth

Последующее сопряжение: 3 секунды после включения Bluetooth и будет автоматически обнаружен и подключен к последнему сопряженному устройству.



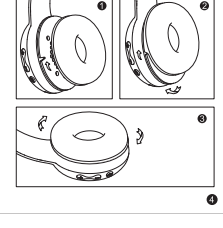
НОТА:
Устройство было проверено на соответствие требованиям части 15 правил FCC и соответствует ограничениям по уровню излучения...

汉



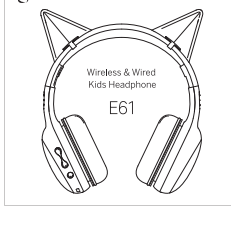
1. 规格参数
2. 按钮功能
3. 功能说明
4. 按钮说明
5. 蓝牙模式

后续配对: 3秒开机后, 设备将自动搜索并连接上次配对成功的设备。
最大音量提示音: "爸爸"



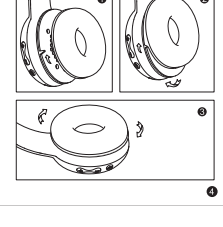
注意:
本产品已通过测试并符合 FCC 第 15 部分对 B 类数字产品的限制...

日



1. パッケージ
2. ボタン機能
3. 機能説明
4. ボタン説明
5. Bluetoothモード

ペアリング: 3秒起動後、最後にペアリングされたデバイスが自動的に検出され接続されます。
最大音量警告音: "パパ"



注意:
本製品はテストされ、FCCの第15部分のB類デジタル製品の制限に準拠していることが確認されています...

FCC Caution:

This device complies with part 15 of the FCC Rules. Operation is subject to the following two conditions: (1) This device may not cause harmful interference, and (2) this device must accept any interference received, including interference that may cause undesired operation.

Any Changes or modifications not expressly approved by the party responsible for compliance could void the user's authority to operate the equipment.

Note: This equipment has been tested and found to comply with the limits for a Class B digital device, pursuant to part 15 of the FCC Rules. These limits are designed to provide reasonable protection against harmful interference in a residential installation. This equipment generates uses and can radiate radio frequency energy and, if not installed and used in accordance with the instructions, may cause harmful interference to radio communications. However, there is no guarantee that interference will not occur in a particular installation. If this equipment does cause harmful interference to radio or television reception, which can be determined by turning the equipment off and on, the user is encouraged to try to correct the interference by one or more of the following measures:

- Reorient or relocate the receiving antenna.
- Increase the separation between the equipment and receiver.
- Connect the equipment into an outlet on a circuit different from that to which the receiver is connected.
- Consult the dealer or an experienced radio/TV technician for help.

This equipment complies with FCC radiation exposure limits set forth for an uncontrolled environment.