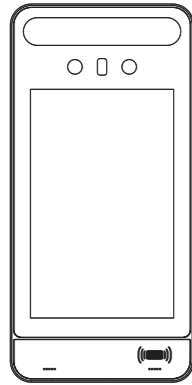
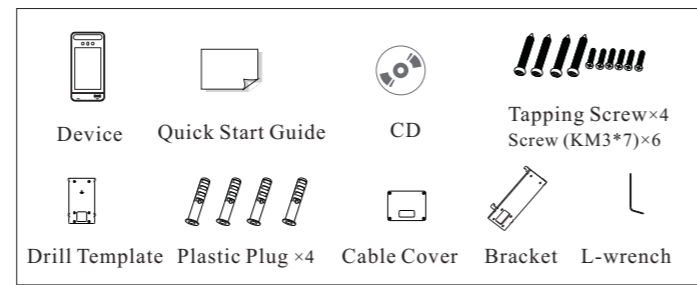


Face Recognition Terminal

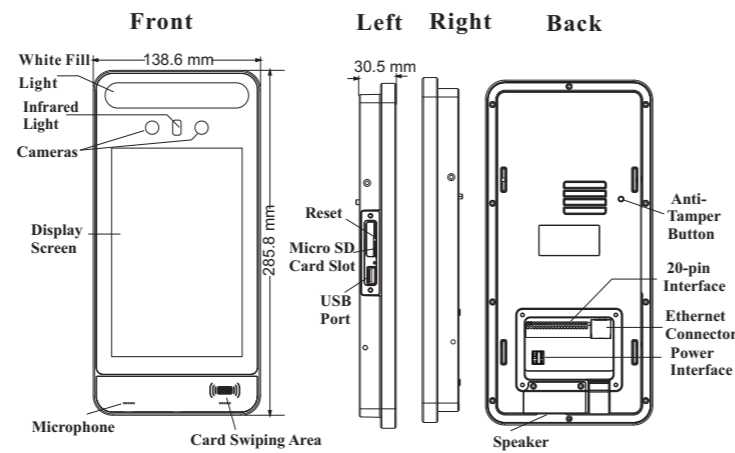
Quick Start Guide



1 Package

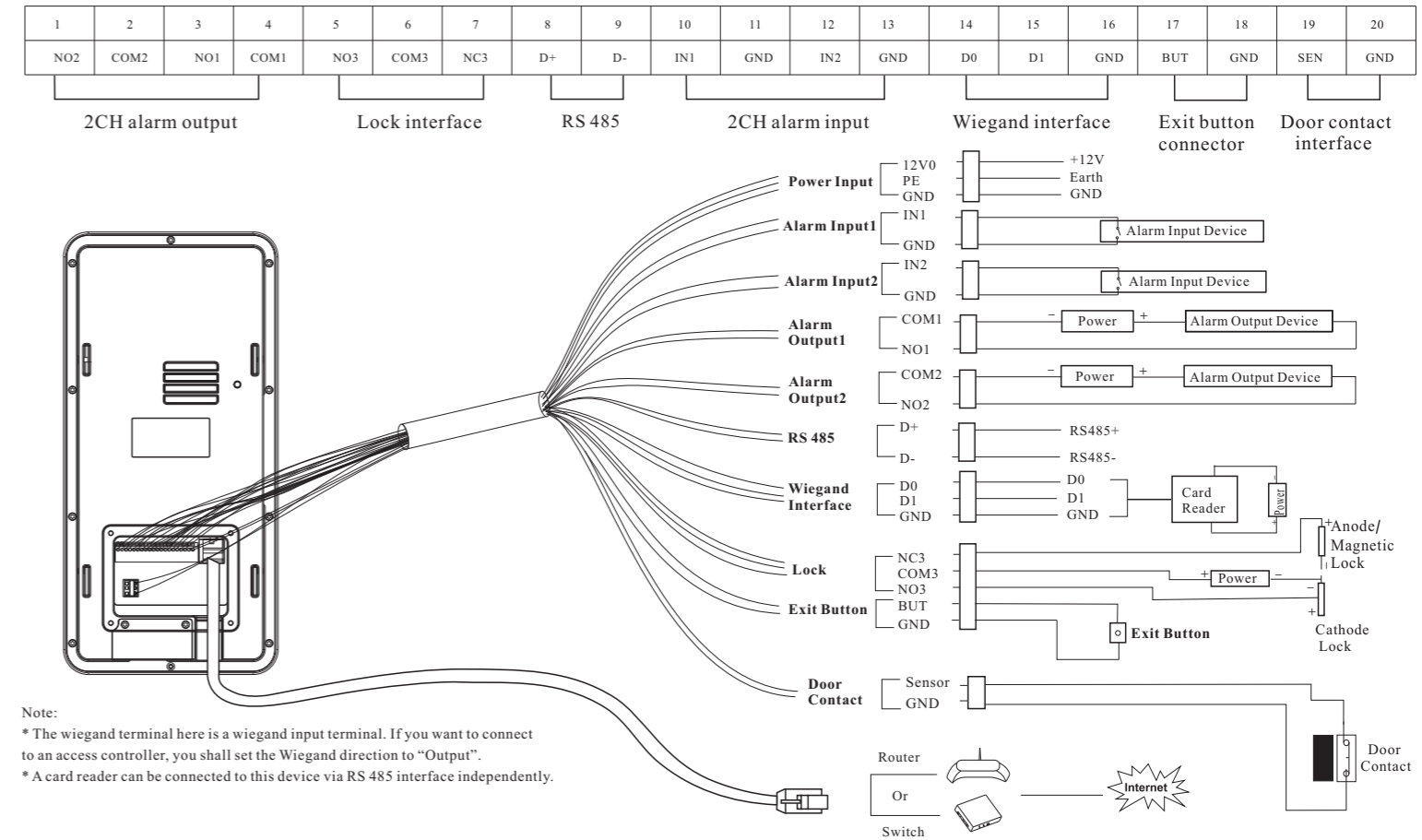


2 Overview



3 Cable Connection

20-pin Interface



4 Installation

Ambient Illumination Requirement

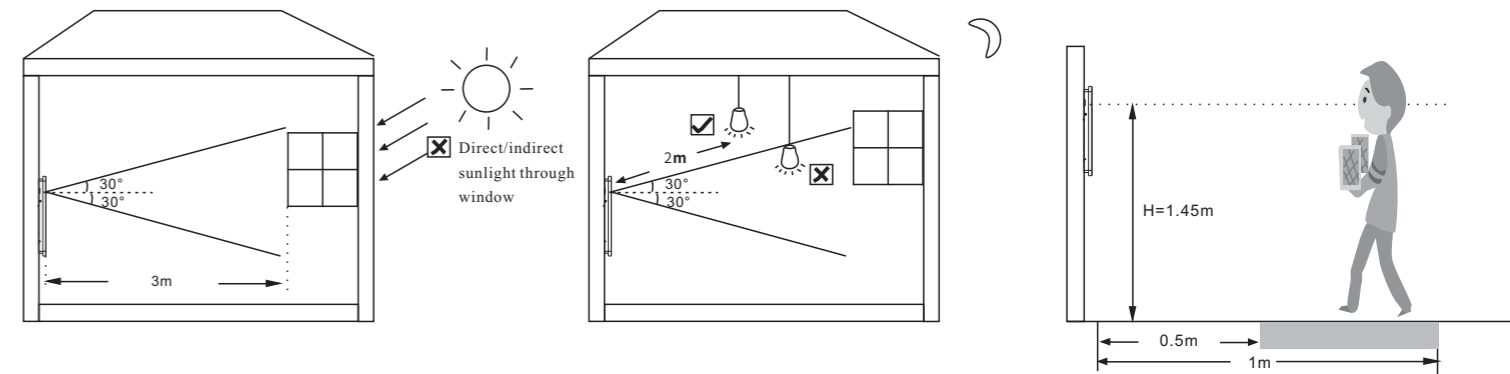
Make sure faces can be captured clearly.

Avoid direct sunlight and backlight.

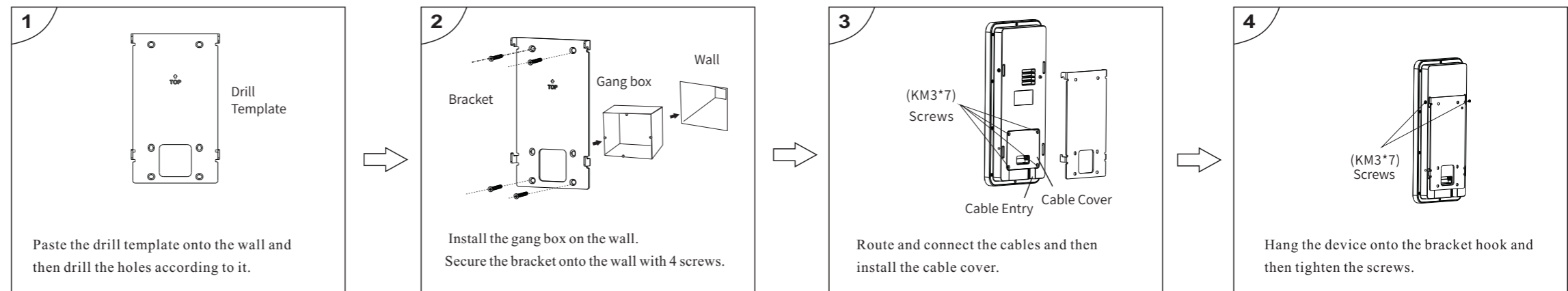
The device should be at least 2 meters away from the light, and at least 3 meters away from the window or door.

Height Requirement

The recommended installation height (H) is 1.45m which can cover human height of 1.2m ~2.2m in the detection area. It can be adjusted according to the actual scene. The ideal recognition distance ranges from 0.5m to 1m.



Installation



About This Manual

All pictures, images, icons and snapshots in this manual are for reference only. If there is inconsistency between the manual and the actual product, the actual product shall prevail. The manual will be updated according to the product improvement and are subject to change without prior written notice.

Legal Disclaimer

To the maximum extent permitted by applicable law, the product described, with its hardware, software, software and firmware, is provided "as is", with all faults and errors, and our company makes no warranties, express or implied, including particular purpose, and non-infringement of third party. In no event will our company, offices, or agents be liable to you for any special, consequential, incidental, or indirect damages, including, among others, damages for loss of business profits, business interruption, or loss of data or documentation, in connection with the use of this product, even if our company has been advised of the possibility of such damages.

With regard to the product with internet access, the use of product shall be wholly at your own risks. Our company shall be irresponsible for abnormal operation, privacy leakage or other damages resulting from cyber attack, hacker attack, virus inspection, or other internet security risks; however, our company will provide timely technical support if necessary.

During the use of the device, please strictly abide by applicable law. In the event of any conflicts between this manual and the applicable law, the later prevails.

Installation and Use

Please use our product according to the following safety instructions and warnings.

Do not place the camera in extremely hot, cold, dusty or damp location.

Do not expose it to high electromagnetic radiation.

If the product does not work properly, please contact your dealer or the nearest service center.

Never attempt to disassemble the camera yourself. (We shall not be responsible for any problems caused by unauthorized repair or maintenance.)

Do not drop the camera or subject it to physical shock.

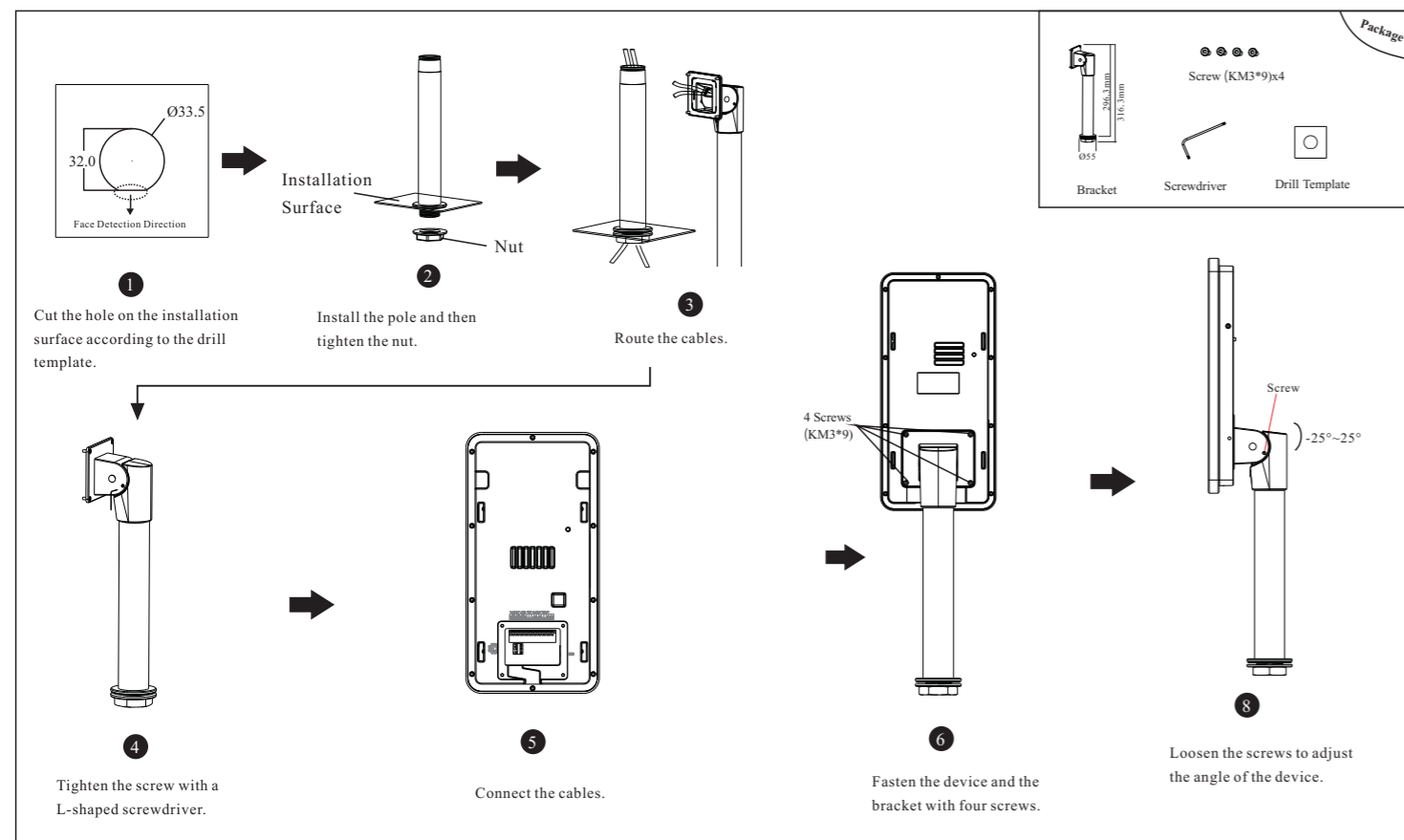
Keep away from liquid while in use.

Do not touch the screen with sharp objects.

If cleaning is necessary, please use clean cloth to wipe it gently, avoiding water or alcohol.

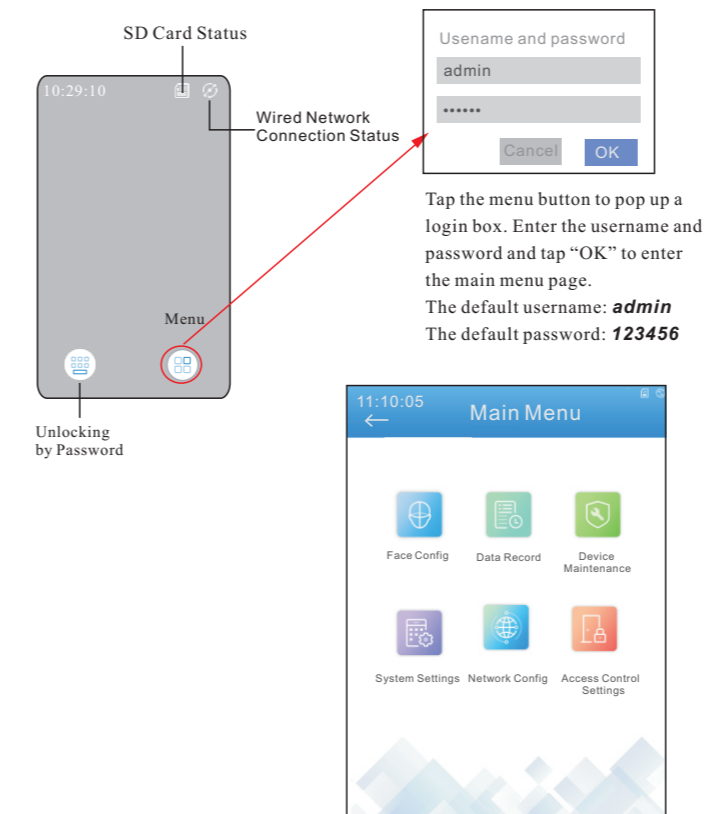
4 Installation

Pole Mounting



5 Login

After the device is powered on and connected to the LAN, you will see the following interface.



6 Network Configuration

In the main menu page, tap "Network Config" to go to the network configuration interface.

Local Network Configuration

Please set IPv4 or IPv6 as needed. Here taking IPv4 network settings for example. You can enter IP address, subnet mask, gateway and DNS server manually or get these network parameters by selecting obtaining IP address automatically. After that, tap [Save] to save the settings. Note: If you want to obtain IP address automatically, you shall enable DHCP function in the router.

← Local Network Config	IPv4	IPv6
Obtaining IP address automatically	<input checked="" type="radio"/>	<input type="radio"/>
Input IP address manually	<input type="radio"/>	<input checked="" type="radio"/>
IP Address	192.168.1.88	
Subnet mask	255.255.0.0	
Gateway	192.168.1.1	
First DNS server	192.168.1.1	
Second DNS server	8.8.8.8	

Sever Configuration

This function is mainly used for connecting client software. Note: The auto report shall be enabled when you add this device in the client software.

Enter auto report port of the client software of the client software

Enter the device ID allocated in the client software

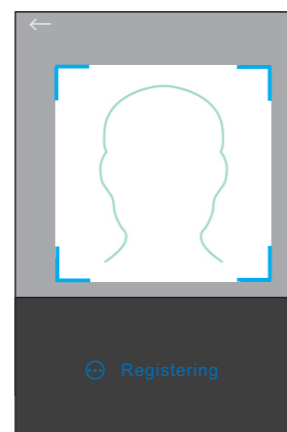
← Sever Config	Enable
Sever port	2009
Sever address	...
Device ID	1
Click it to modify the sever port	
Click it to enter the IP address	
Click it to modify the device ID	

7 Face Configuration

People Management

- Select "People Management" in the main menu page to go to the people management page.
- Tap "+" to enter the "Add User" page.

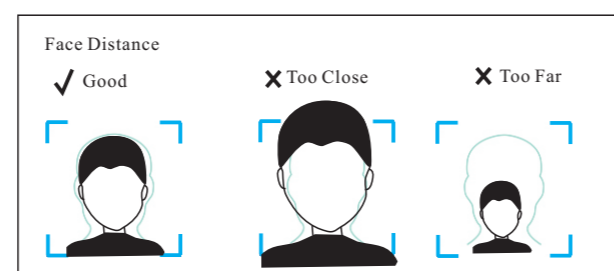
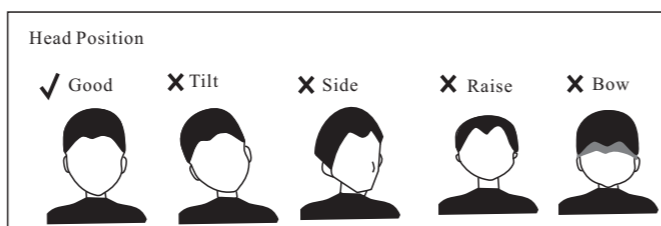
People Management			
Search name or ID number			
Name	ID No.	Group	Verification
XXX	123	Allow List	Face only >



Adding Face:

Face the camera and ensure your face picture in the middle of the face collecting window. Keep your expression naturally when collecting face pictures.

Do not wear hat, sunglasses, or other objects that can affect the face recognition function. Do not make your hair cover your eyes, ears, etc. The ideal recognition distance is from 0.5 to 1m; when collecting or comparing face picture, please ensure that the target is in a proper position.



Add User	
ID no.	Pls input ID number
Name*	Pls input name
Gender*	Pls select the gender >
Age	Pls input age
Tel	Pls input tel
Remark	Pls input remark
Card no.	Pls input Card number
Password	Pls input password >
Group type*	Pls select group type >
Face*	Face only >
Verification*	Face only >

- Set username, gender, group type, ID number, verification mode, etc.
- Tap [Add Face] to add a face picture. The detailed face adding requirements refer to the descriptions of **Adding Face**.
- Tap [Save] to save settings.

Match Settings

In the face config page, tap "Match Settings" to go to the match settings page. Please set similarity threshold, deduplication period, snapshot interval, white light mode and so on as needed. Deduplication period: In the pre-defined period, delete repeated comparison results. It is recommended to use the default match settings.

Match Settings	
Similarity threshold	75%
Deduplication period	4S
Snapshot interval	4000MS
Send the face comparison	<input checked="" type="checkbox"/>
Save face comparison data	<input checked="" type="checkbox"/>
Liveness detection	<input checked="" type="checkbox"/>
White light mode	Auto >

Group Settings

In the face config page, tap "Group Settings" to go to the group settings page. There are three groups—allow list, block list, visitor. The group type of the added user can be changed here. Select a group and tap ">" to enter this group. Tap the user you want to change his/her group and then a drop-down list will be displayed. Choose the group to change.

Group Settings	
Block List	>
Visitor	>
Allow List	>

Allow List			
Name	ID no.	Group	Verification
XXX	123	Allow List	Face only >
<div style="border: 1px solid gray; padding: 2px;"> Visitor Allow List Block List </div>			

8 Web Client Access

- Make sure that the device and the PC are well connected via LAN.
- Find the IP-Tool from the CD and then install it in the computer. After that, run the IP-Tool as shown below.

Device Network Search									
Device Name	Device Type	Product Model	IP Address	Http Port	Data Port	Subnet	Mac Address	Modify Network Parameter	
name	IPC	unknown	192.168.226.201	80	9008	255.255	CE:98:23:75:35:22	IP Address	192.168.226.201
name	IPC	unknown	192.168.1.2	80	9008	255.255	255.255.255.0	Subnet Mask	192.168.226.1
name	IPC	unknown	192.168.1.3	80	9008	255.255	255.255.255.0	Gateway	

Modify the IP address. The default IP address of this terminal is 192.168.226.201. Click the information of the device listed in the above table to show the network information on the right hand. Modify the IP address and gateway of the camera and make sure its network address is in the same local network segment as that of the computer. Please modify the IP address of your device according to the practical situation. After modification, please enter the password of the administrator and click "Modify" button to modify the settings.

The default password of the administrator is "123456".

- Double-click the device listed in the IP-Tool or manually enter the IP address in the address bar of the web browser to connect the device. Then follow directions to download and install the plugin.
- Enter the username and password in the login interface.

The default username is **admin**; the default password is **123456**.

FCC Warning:

This equipment has been tested and found to comply with the limits for a Class B digital device, pursuant to part 15 of the FCC Rules. These limits are designed to provide reasonable protection against harmful interference in a residential installation. This equipment generates, uses and can radiate radio frequency energy and, if not installed and used in accordance with the instructions, may cause harmful interference to radio communications. However, there is no guarantee that interference will not occur in a particular installation. If this equipment does cause harmful interference to radio or television reception, which can be determined by turning the equipment off and on, the user is encouraged to try to correct the interference by one or more of the following measures:

- Reorient or relocate the receiving antenna.
- Increase the separation between the equipment and receiver.
- Connect the equipment into an outlet on a circuit different from that to which the receiver is connected.
- Consult the dealer or an experienced radio/TV technician for help.

Caution: Any changes or modifications to this device not explicitly approved by manufacturer could void your authority to operate this equipment.

This device complies with part 15 of the FCC Rules. Operation is subject to the following two conditions:

(1) This device may not cause harmful interference, and (2) this device must accept any interference received, including interference that may cause undesired operation.

This equipment complies with FCC radiation exposure limits set forth for an uncontrolled environment. This equipment should be installed and operated with minimum distance 20cm between the radiator and your body.