

## 1. Antenna Description:

|                 |   |
|-----------------|---|
| Antenna type    | PIFA antenna                              |
| Model           | TD-9742A3-PC-1                            |
| Frequency range | 2400-2500MHz                              |
| Manufacturer    | SHENZHEN TVT DIGITAL TECHNOLOGY CO., LTD. |
| ANT Peak Gain   | 2.00 dBi                                  |

## 2. Antenna Photo:

Length: 41.45mm  
Width: 6.29mm



### 3. Test Equipment & Conditions

#### 3.1 Test instrument

VSWR is tested using Agilent E5071B connected to a hand mechanism, and the status is free space.

#### 3.2 Test environment and methods

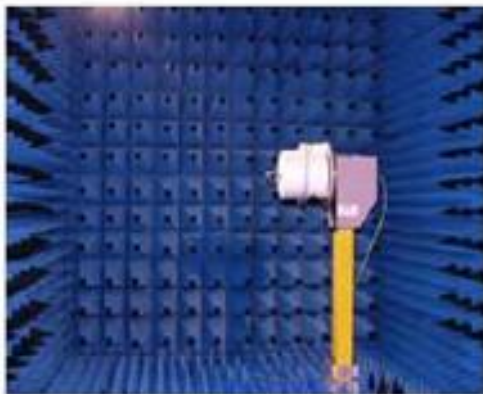
Dark room specifications: ETS-743

TD-SCDMA test equipment: StarPoint SP6010/Agilent 8960

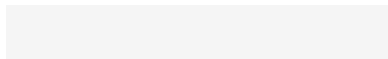
LTE-TDD/FDD-SCDMA test equipment: StarPoint SP8011/CMW500

WCDMA/GSM/CDMA test equipment: Agilent 8960

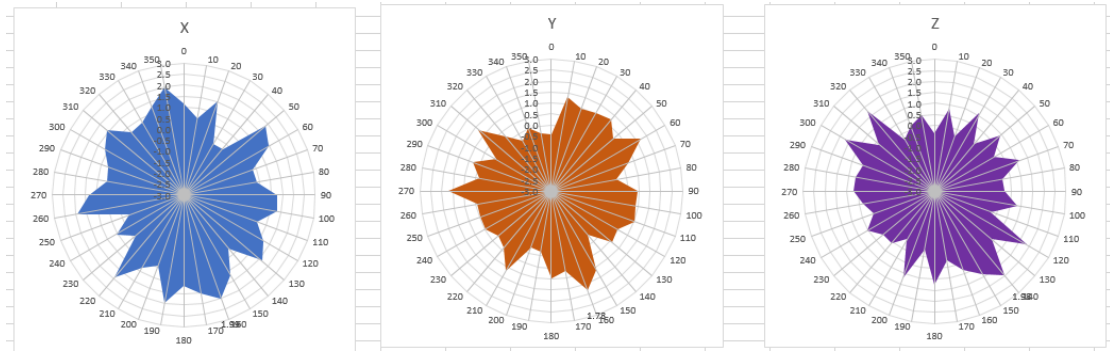
Passive efficiency testing equipment: Agilent Technologies E5071B



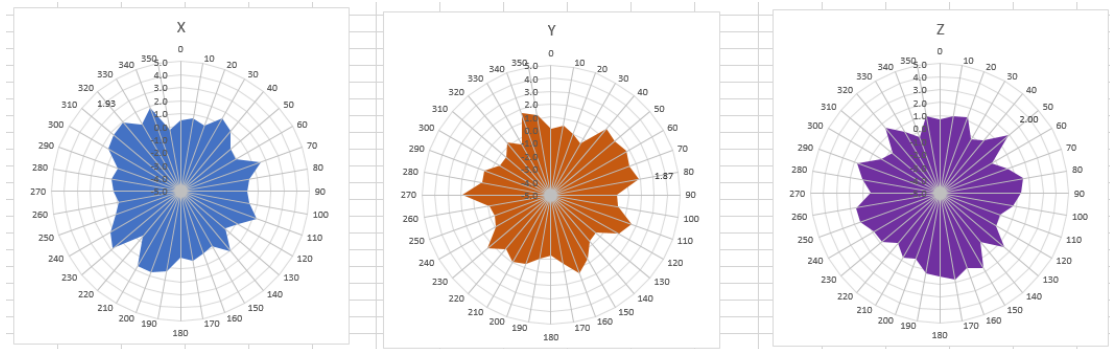
### 4 . Antenna Radiation Pattern



# 2400MHz



# 2450MHz



# 2500MHz

