



**Helpful Hint #1:** Activation will be easier if you wait to install the HF3.0 into your helmet after all other steps have been completed.

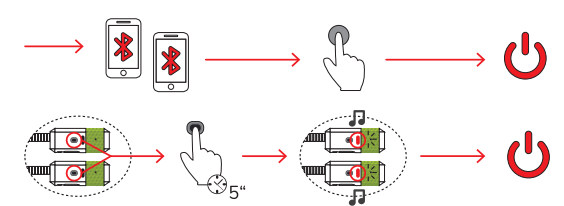
**Helpful Hint #2:** Intercom functionality can only be activated or deactivated by the HF3 INTERCOM. When pairing with any other HF device, the HF3 becomes the controlling unit, while all other HF devices become the partnered unit. Partnered units cannot activate or deactivate intercom functionality.

**DUAL LINK: PAIRING AS AN INTERCOM WHILE MAINTAINING HANDS-FREE FUNCTION**

**Step 1:** Pair each device with its related phone as described in "How to Pair Your Twiiins® HF Device With Your Phone". The same process applies here. Each HF device will need to be paired with a corresponding phone.

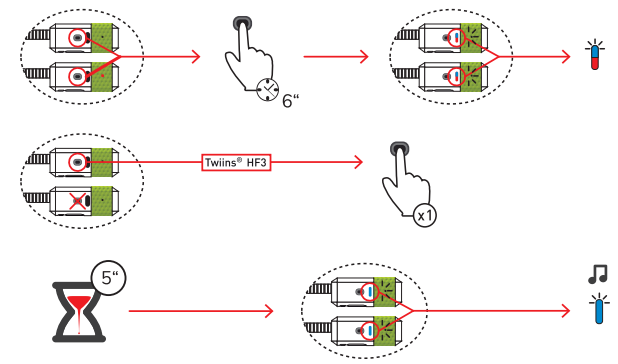
**Note:** You'll want to make sure the HF3 is paired with the rider's phone. The HF2 or other HF device will be paired with the passenger's phone.

**Step 2:** Switch off Bluetooth® on both phones.  
**Step 3:** Switch off both Twiiins devices.

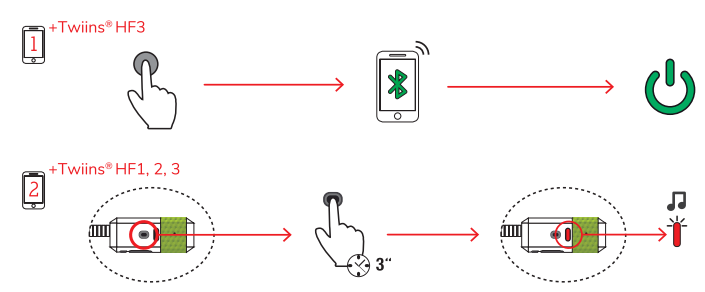


**Step 4:** Press and hold the control button (1b) on both Twiiins devices until the LED indicators of both devices begin flashing in red and blue.

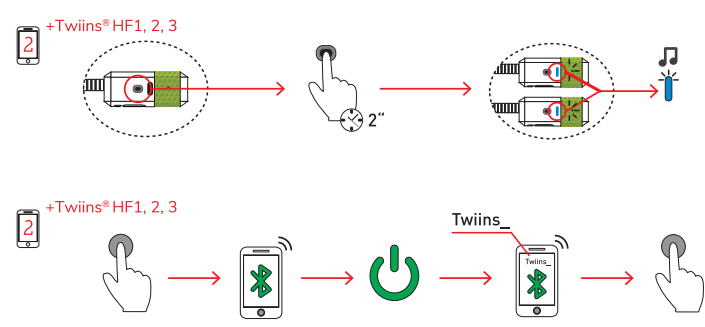
**Step 5:** Press the control button on the Twiiins HF3 device for two seconds. After five seconds, both devices will pair and intercom function will be activated.



**Step 6:** Switch on the Bluetooth® on Phone 1 linked with Twiiins HF3 device. If it does not pair automatically, select HF3 from Phone 1 Bluetooth screen. Press the control button of the second Twiiins device for five seconds and it will switch off.



**Step 7:** Press the control button again for two seconds and second device will switch on again. After several seconds, the Twiiins® HF3 and second device will pair automatically, and will beep briefly. Switch on the Bluetooth® of Phone 2. Select Twiiins second device on the screen. Phone 2 and the second device will be paired again, while both Twiiins® will be paired in INTERCOM mode, and Phone1 will be paired with HF3.

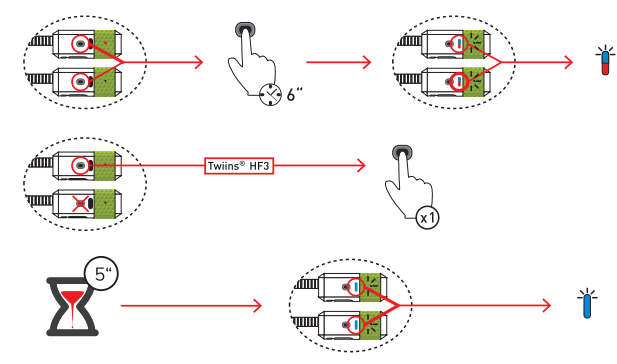


**SINGLE LINK: PAIRING HF DEVICES AS INTERCOM ONLY (WITHOUT HANDS-FREE FEATURES)**

**Step 1:** Make sure both Twiiins devices are switched off.

**Step 2:** Press and hold the control (1b) buttons of both Twiiins devices until the respective LED indicators flashing in red and blue

**Step 3:** Press the control button of this Twiiins HF3 device for two seconds. After a few seconds, both devices will briefly beep, and they will be paired. Intercom function will be activated.



### ACTIVATING / DEACTIVATING INTERCOM FUNCTIONALITY

Once both Twins devices have been paired and switched on, press the HF3 control button (1b) to activate or deactivate Intercom functionality. When activating / deactivating both devices will beep briefly.

### ADJUSTING VOLUME FOR INTERCOM FUNCTION

**Step 1:** You can adjust the volume by briefly pressing the control button of the HF3

**Step 2:** It will then cycle through three levels: Low < Medium < High.

### PLEASE NOTE

To use HF1 or HF2 or HF3 devices in GROUPTALK mode, please disconnect the INTERCOM TO PASSENGER function.

To use the INTERCOM TO PASSENGER function, please make sure you have logged out from GROUPTALK APP, and closed the APP.

To use this HF3 INTERCOM with any other device than Twins: please make sure other device have the INTERCOM function, and it uses open Bluetooth protocols, without passwords. Please, when connecting both devices, press HF3\_INTERCOM to pair the other device.