

Ucfer

Your safer home

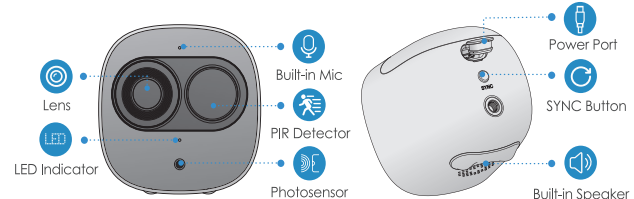
Version 1.0

Packing List



Note: The quantity of the camera and other accessories might vary with different models, and the actual product shall prevail.

Camera Introduction

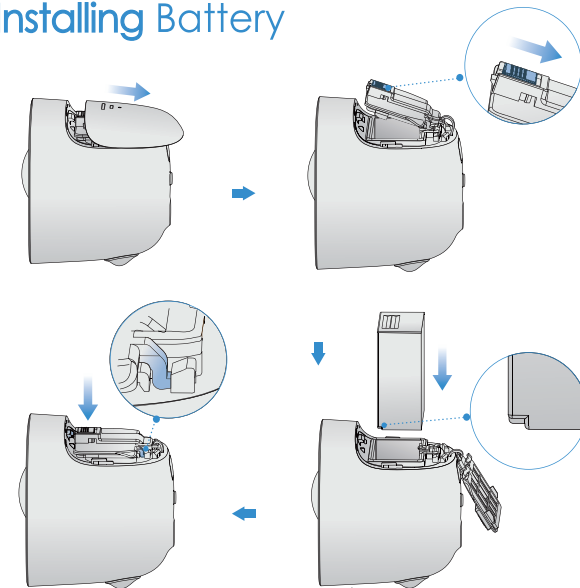


Note: Press the SYNC button to pair with the base station.
Press and hold the SYNC button for 8 s to reset the camera.

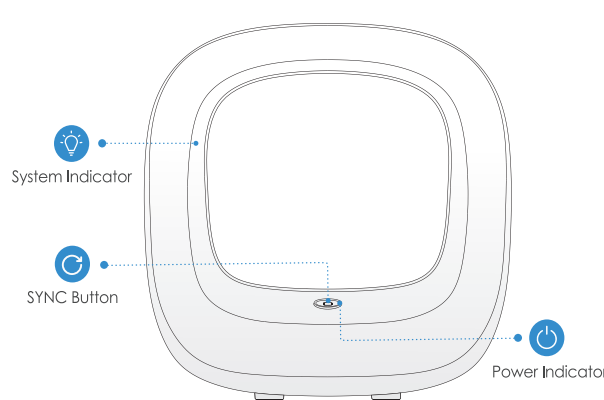
The pattern of the LED indicator is included in the following table.

LED Indicator Status	Device Status
Off	<ul style="list-style-type: none">● Sleeping mode● Run out of battery
Green light on	<ul style="list-style-type: none">● Alarm is triggered● Instructed to wake
Green light flashing	Reconnecting Wi-Fi
Green light quick flashing	Waiting for pairing with the base station
Green light stay on for 10 s, then off	Pairing succeeded
Red light stay on for 10 s, then off	Pairing timeout
Red light stay on for 1 s, then off	Reset completed

Installing Battery

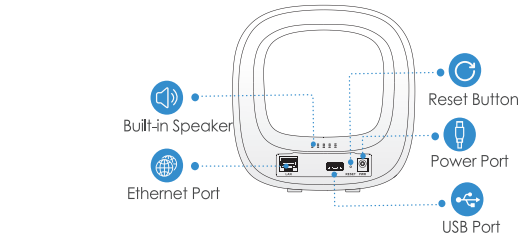


Base station Introduction



The pattern of the power indicator is included in the following table.

Power Indicator Status	Device Status
Off	Not powered up
Blue light stay on	Powered up properly



Note: Press the SYNC button to pair with cameras.
Press and hold the Reset button for 5 s to reset the base station.
You can connect USB drive to the USB port to record video.

Caution: The base station might format the USB drive, be sure to backup your data.
The pattern of the system indicator is included in the following table.

System Indicator Status	Device Status
Off	<ul style="list-style-type: none">● Not powered up● Operating properly
Blue light flashing	Booting up
Yellow light flashing	Waiting for network connection
White light flashing	Waiting for pairing with cameras
White light stay on for 10 s, then off	Pairing succeeded
Red light stay on for 10 s, then off	Pairing failed
White light stay on for 1 s, then off	Reset completed
White light quick flashing	Firmware updating



Safety Instructions

- Do not short circuit the battery with other metal.
- Do not heat the battery or throw it into fire.
- Do not take apart the battery or press it to make it deformed.
- Keep the battery away from children.
- It is recommended to use the original battery.
- Do not use the battery at temperature above 60°C/140°F.
- The battery cannot be charged at temperature below 0°C/32°F.
- Recycle the waste battery as local regulations instructed.

Support

- Support Email: support@ucfer.com
- FAQ: Scan the QR code below



Adding Base station

Step 1

Power up the base station, and then connect the Ethernet port to your router with the network cable.

Step 2

The system indicator stays on with white light for 10 s, and then off, which means the base station is connected to the network.

Step 3

Scan the following QR code or search "Ucfer" in Google Play or App Store to download and install the Ucfer App.

Step 4

Run Ucfer App, and then register an account for first use.

Step 5

Do the following operations to finish adding base station.

- Note:**
- If you have more than one camera, do step 5 to add them one by one.
 - If the Wi-Fi network changed or the indicator status goes wrong, reset the camera, and then do step 5 to add it again.



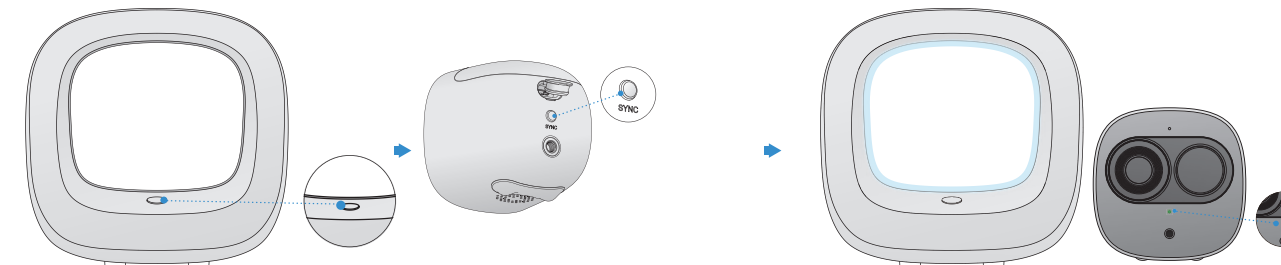
Pairing Camera

Step 1

On the base station: Press the SYNC button, and then the system indicator on the base station flashes with white light.

Step 2

On the camera: Press the SYNC button, and then the indicator on the camera flashes with green light.



- Note:** You can pair six cameras at most with one base station, and pair one camera at a time. Keep the distance of the base station and the camera within 30 cm (12 inches) during pairing.

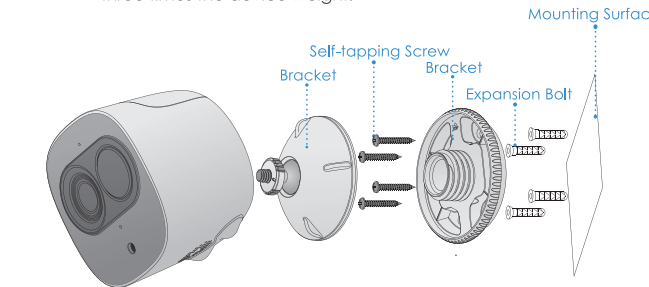
Step 3

The pairing starts, and the indicators flash as described below:

- The system indicator on the base station stays on with white light for 10 s, and then off.
 - The indicator on the camera stays on with green light for 10 s, and then off.
- The pairing succeeded then.

Installing Camera

Note: Make sure the mounting surface is strong enough to hold at least three times the device weight.



Step1 Drill screw holes on the mounting surface as the positioning map shows, and then put in the expansion bolts.

Step2 Open the bracket, and then attach the bottom of the bracket to the mounting surface with the self-tapping screws.

Step3 Attach the other half of the bracket to the camera, then adjust the lens to the ideal angle, and then fix the bracket.