



Qi Wireless Charger

User Manual

Qi ♻️ CE FCC RoHS

GENERAL

Please read this document before using this product. Keep this document for future reference.

SPECIFICATION

Input: DC 5V/2A; 9V/1.8A; 12V/1.5A
Output: 5W; 7.5W; 10W; 15W (Max)
Charging Efficiency: $\leq 80\%$
Charging Distance: 3-8mm
Frequency: 110-205kHz
Standard: Qi
Support: All Qi compatible mobile devices.
Size: 81.1mm x 11.0mm
Operating temperature: 0-35°C

FCC STATEMENT

Changes or modifications not expressly approved by the party responsible for compliance could void the user's authority to operate the equipment.

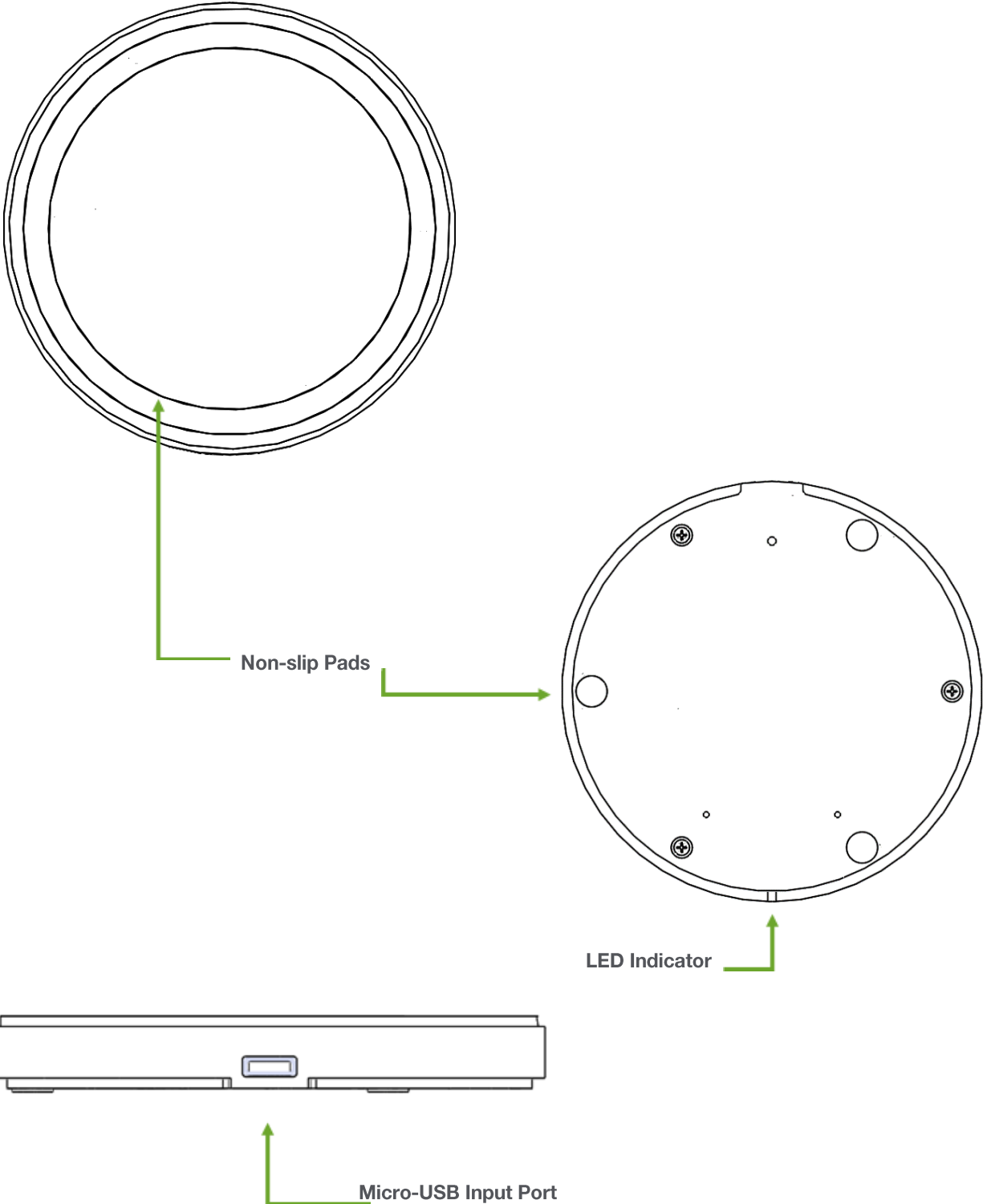
This equipment has been tested and found to comply with the limits for a Class B digital device, pursuant to Part 15 of the FCC Rules. These limits are designed to provide reasonable protection against harmful interference in a residential installation. This equipment generates, uses and can radiate radio frequency energy and, if not installed and used in accordance with the instructions, may cause harmful interference to radio communications. However, there is no guarantee that interference will not occur in a particular installation.

If this equipment does cause harmful interference to radio or television reception, which can be determined by turning the equipment off and on, the user is encouraged to try to correct the interference by one or more of the following measures:

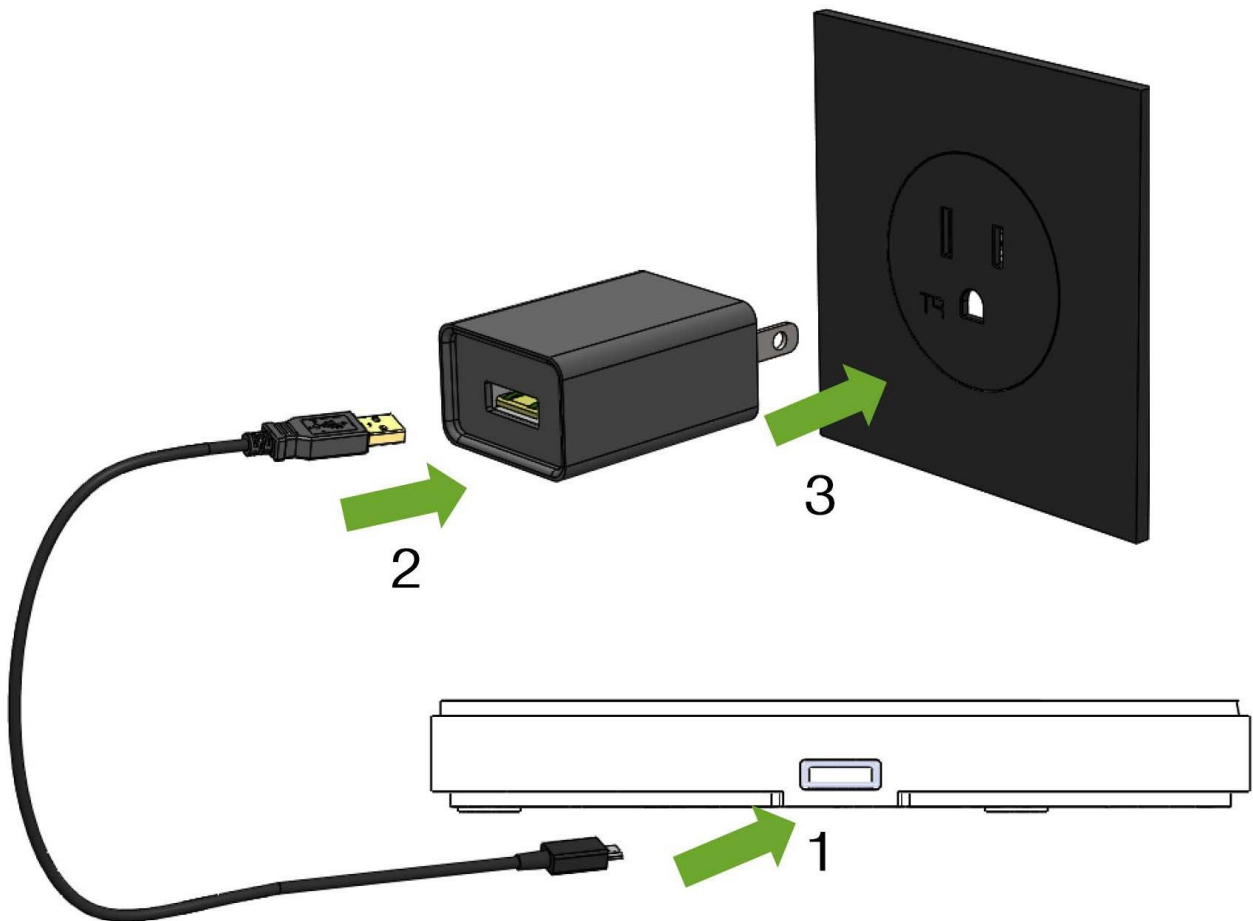
- Reorient or relocate the receiving antenna.
- Increase the separation between the equipment and receiver.
- Connect the equipment into an outlet on a circuit different from that to which the receiver is connected.
- Consult the dealer or an experienced radio/TV technician for help.

This equipment complies with FCC radiation exposure limits set forth for an uncontrolled environment. This equipment should be installed and operated with minimum distance 20cm between the radiator and your body. This transmitter must not be co-located or operating in conjunction with any other antenna or transmitter.

OVERVIEW



CONNECTION



1. Connect micro-USB plug to micro-USB port on wireless charging unit
2. Connect USB Type-A plus to USB Type-A port on wall charger
3. Connect wall charger to an appropriate wall outlet

Indicator	Solid RED LED: Standby
	Solid BLUE LED:
	Blinking RED LED: Charging Full <u>Note:</u> except for iPhone, which will keep solid BLUE LED
	Blinking BLUE LED: Faulty

NOTES

- 1, To avoid short circuit, do not disassemble, throw into fire or water, or crush
2. For indoor use only
3. Do not use in corrosive environment, extreme humidity, and exceeding operating temperature
4. To avoid unwanted interference, keep at least 20cm (8inch) between implantable medical devices (pacemakers, cochlear, etc.) and wireless charger
5. This is not a toy, do not give to children

INSIDE THE BOX

- 1 EA Arconas wireless charger
- 1 EA 1m USB Cord
- 1 EA Wall outlet (NEMA 1-15p)

***All images above are subject to change without notification.**