

Remote Control Door/Window Alarm

Installation and Operation Instructions

Please read the instructions carefully before using the equipment for the first time and keep it for future reference.

1. Standard packing list

Instructions * 1
Door/Window Alarm * 1
Remote-controller*2
AAA battery*4
3M tape *1

2. Specifications

| | |
|-------------------------------------|---------------------|
| MHZ | 433.92MHz |
| Environment humidity | < 90% |
| Working temperature | -10-60℃ |
| Decibel | 130db |
| Battery in Alarm device | 2 pcs AAA battery |
| Battery in Remote-controller device | 1pcs CR2032 battery |
| Remote control distance | ≥15m |
| Alarm device Standby | 1year |

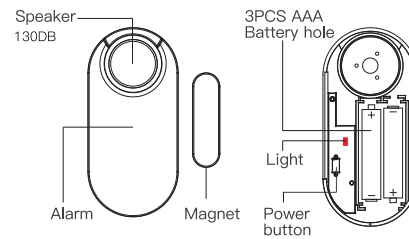
◀ 01/06 ▶

| | |
|----------------------------------|------------|
| Remote-controller device Standby | 1year |
| Remote-controller device weight | 15g |
| Alarm device weight | 60g |
| Alarm device size | 90*43*13mm |
| Magnet size | 45*13*13mm |
| Remote-controller device size | 60*33*11mm |

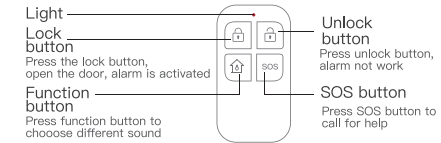
3. Functions

A) Door/Window Burglar alarm B) Door bell C) SOS

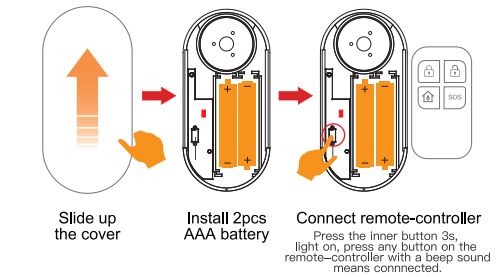
4. Structure



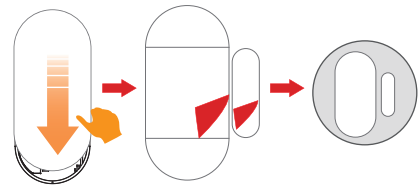
◀ 02/06 ▶



5. Installation



◀ 03/06 ▶



Slide down the cover

Put 3M tape on the back

Stick it on the door
two parts distance within 15mm

Attention:

Press the inner button 3s, light on, press any any button on the remote-controller, there will emit a beep sound, means the alarm connect with the remote-controller successfully. Press the inner button 8s, from light on to light off, the alarm and the the remote-controller disconnect.

Connect



Press 3s

Disconnect

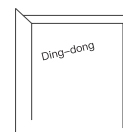


Press 8s

◀ 04/06 ▶

6. How to use

- After installation, press the lock button, alarm is activated, when open the door or window, there will emit a loud sound 30s.
- In any situation, press the unlock button, the alarm will stop working.
- When door or window is closed, press unlock button first, then press the function button to choose different sound:
press once: situation 1, Ding-dong sound
press twice: situation 2, alarm sound
press three times: situation 3, beep sound
press four times, back to situation 1.



situation 1



situation 2



situation 3

- In any situation, press the SOS button, there will emit a siren sound for 30s.

◀ 05/06 ▶



Press SOS button to call for help

7. Low power warning

When alarm battery voltage is lower than 2.1V, there will emit a beep sound, replace the battery as soon as possible.

8. Warranty Card

Thank you for purchasing our product. Please fill in the details below and keep them safe.

| | | | |
|-----------|--|---------------|--|
| User name | | Contact add. | |
| Contact | | Purchase add. | |
| Model No | | Purchase date | |

Certificate :



◀ 06/06 ▶

This device complies with part 15 of the FCC Rules. Operation is subject to the following two conditions: (1) this device may not cause harmful interference, and (2) this device must accept any interference received, including interference that may cause undesired operation.

Any changes or modifications not expressly approved by the party responsible for compliance could void the user's authority to operate the equipment.

NOTE: This equipment has been tested and found to comply with the limits for a Class B digital device, pursuant to Part 15 of the FCC Rules. These limits are designed to provide reasonable protection against harmful interference in a residential installation. This equipment generates, uses and can radiate radio frequency energy and, if not installed and used in accordance with the instructions, may cause harmful interference to radio communications.

However, there is no guarantee that interference will not occur in a particular installation.

If this equipment does cause harmful interference to radio or television reception, which can be determined by turning the equipment off and on, the user is encouraged to try to correct the interference by one or more of the following measures:

- Reorient or relocate the receiving antenna.
- Increase the separation between the equipment and receiver.
- Connect the equipment into an outlet on a circuit different from that to which the receiver is connected.
- Consult the dealer or an experienced radio/TV technician for help.

The device has been evaluated to meet general RF exposure requirement. The device can be used in portable exposure condition without restriction