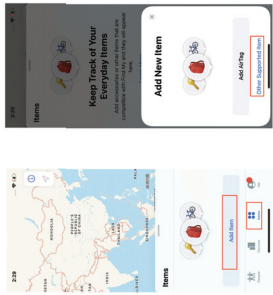


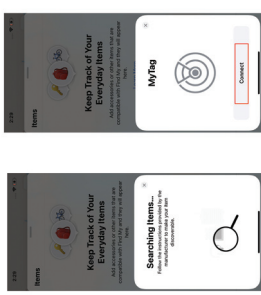
## My Tag User Manual

**Add your iTag:** Open Find My™ on your supported iPhone or iPad and allow notifications from the Find My app. Connect iTag. Tap on power on iTag.

- Select "Items" tab, then tap "Add Item", and next tap "Other supported items".



3. Once iTag is located, tap "Connect".



## MyTag 防丢器操作说明

备注：Find My 防丢器兼容使用除少数 iOS 设备之外，苹果所支持的 iPhoneSE、iPhone 14 及更新机型、iPad Pro、iPad (第五代或后续机型)、iPad Air 2 或后续机型、iPad mini 4 或后续机型（如 AirTag）。

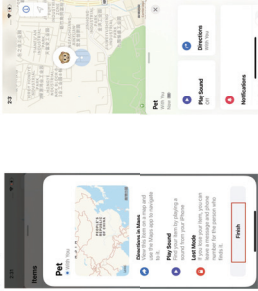
**绑定条件：**支持苹果手机的网络、蓝牙、定位服务，并确保防丢器充电。

第一步：打开苹果手机自带的“查找”应用程序。

第三步：选择“添加物品”，然后选择“其他支持的物品”。



6. Tap "Flash" and your iTag will set up and ready to be connected to whatever iTag you wish to locate, e.g. your keys.

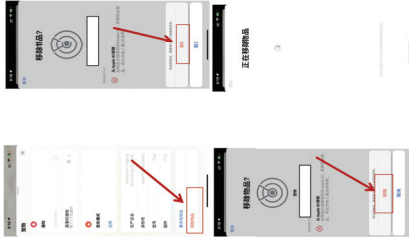


**Resetting iTag:**

- Open Find My™ APP and select "Items" tab.
- Tap on your iTag from the list.
- Tap on "Remove" at the bottom of the screen and tap "Remove Item".
- Soal to the bottom of the screen and tap "Remove Item".
- A summary will open, then tap "Remove" to confirm.



**解除绑定条件：**点击屏幕下方的“移除物品”，然后点击“移除”。接着弹出设备“移除”等待完成解除绑定。移除后，“正在移除物品”的弹窗会自动消失，设备不会受到任何提示音，这样便完成了移除操作。



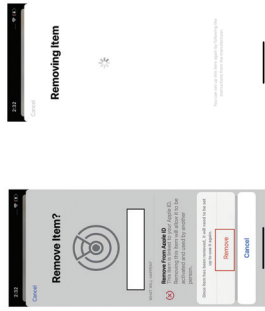
**解除绑定物品说明：**

- 长按物品至少 5 秒，屏幕将显示“移除”两屏提示音；
- 长按 5 秒之后，系统会提示“你选择了一项非手机提示音”；
- 长按 5 秒之后，系统会提示“你选择了一项非手机提示音”；
- 长按 5 秒之后，系统会提示“你选择了一项非手机提示音”；

如果提示音没有消失，说明设备没有完全解除绑定，请重复上述操作。

**解除绑定物品说明：**

- 长按物品至少 5 秒，屏幕将显示“移除”两屏提示音；
- 长按 5 秒之后，系统会提示“你选择了一项非手机提示音”；
- 长按 5 秒之后，系统会提示“你选择了一项非手机提示音”；
- 长按 5 秒之后，系统会提示“你选择了一项非手机提示音”；



**Factory Reset Your iTag:**

- Open Find My™ app, press the iTag's function button 4 times rapidly and then hold it a fifth time until you hear a ringing chime.
- The iTag is now reset and ready to be paired to a new iPhone or iPad.

**Locate Your iTag:**

**Find iTag when it's nearby:**

- Open Find My™ app and select the "Items" tab.
- Tap on your iTag from the list.
- Tap on "Play Sound" to make your iTag beep.
- Tap on "Play Sound" to make your iTag beep.

**Find iTag's last known location:**

- Open Find My™ app and select the "Items" tab.
- Tap on your iTag from the list.
- Tap on "Last Known Location" to see the location where your iTag was last known to be.
- Tap on "Directions" to get directions to the location.

**Find iTag Out of Range:**

**Enabling "Notify When Left Behind":**

- Open Find My™ app and select the "Items" tab.
- Tap on your iTag from the list.
- Tap on "Notify When Left Behind" toggle.
- Tap on "Notify When Left Behind" toggle.

**Enabling "Notify When Found":**

- Under "Notifications" enable the "Notify When Found" toggle.
- Under "Notifications" enable the "Notify When Found" toggle.

3. Note: "Notify When Found" can only be activated when your iTag is out of range.

**When Your iTag Is Lost:**

**Enabling "Lost Mode":**

- Open Find My™ app and select the "Items" tab.
- Tap on your iTag from the list.
- Tap on "Lost Mode" toggle.
- Tap on "Lost Mode" toggle.

8. APP 提示绑定条件：防丢器和苹果手机蓝牙通信的距离在 10 米（33 英尺）以内，苹果手机要有充足电量。第二步：防丢器通过本地蜂窝网络定位，重新（快速）连接到防丢器网络下，第五步长按直到听到提示音为止。

苹果手机正常连接使用。如果设备单一方面没有成功连接，防丢器也不能接收其他设备正常连接使用。

苹果手机正常连接使用。如果设备单一方面没有成功连接，防丢器也不能接收其他设备正常连接使用。

苹果手机正常连接使用。如果设备单一方面没有成功连接，防丢器也不能接收其他设备正常连接使用。

**解除绑定物品说明：**

- 长按物品至少 5 秒，屏幕将显示“移除”两屏提示音；
- 长按 5 秒之后，系统会提示“你选择了一项非手机提示音”；
- 长按 5 秒之后，系统会提示“你选择了一项非手机提示音”；
- 长按 5 秒之后，系统会提示“你选择了一项非手机提示音”；

**解除绑定物品说明：**

- 长按物品至少 5 秒，屏幕将显示“移除”两屏提示音；
- 长按 5 秒之后，系统会提示“你选择了一项非手机提示音”；
- 长按 5 秒之后，系统会提示“你选择了一项非手机提示音”；
- 长按 5 秒之后，系统会提示“你选择了一项非手机提示音”；

**解除绑定物品说明：**

- 长按物品至少 5 秒，屏幕将显示“移除”两屏提示音；
- 长按 5 秒之后，系统会提示“你选择了一项非手机提示音”；
- 长按 5 秒之后，系统会提示“你选择了一项非手机提示音”；
- 长按 5 秒之后，系统会提示“你选择了一项非手机提示音”；

1. Open Find My™ app and select the "Items" tab.

2. Tap on your iTag from the list.

3. Under "Lost Mode" tap "Enable".

4. Enter your phone number or email address and tap "Next".

5. You may enter a message that will be shared with the person that finds your item.

6. Note: When "Lost Mode" is enabled, "Notify When Found" is automatically enabled.

7. Note: When "Lost Mode" is enabled, your iTag is locked and cannot be paired to a new iPhone or iPad.

**Extras**

**Replace The Battery**

- Remove the back cover from the iTag.
- Remove the battery with a new CR2032 battery replacing it (positive side up).

**Unwanted Tracking**

If an accessory, separated from its owner is seen moving with you over time, you'll be notified in one of two ways:

- If you have an iPhone, iPad or iPod touch, Find My will send a notification to your Apple Watch.
- If you don't have an iOS device or a smartwatch, Find My network accessory that isn't with its owner for a period of time will emit a sound when it's moved.

These features were enabled specifically to discourage people from trying to track you without your knowledge.

FCC Caution: This device complies with part 15 of the FCC Rules. Operation is subject to the following two conditions: (1) this device may not cause harmful interference, and (2) this device must accept any interference received, including interference that may cause undesired operation.

Any Changes or modifications not expressly approved by the party responsible for compliance could void the user's authority to operate the equipment.

Note: This equipment has been tested and found to comply with the limits for a Class B digital device, which provides some protection against harmful interference in a residential installation. This equipment generates, uses, and can radiate radio frequency energy and, if not installed and used in accordance with the instructions, may cause harmful interference to radio communications. However, there is no assurance that interference will not occur in a particular installation. If you find that the equipment causes interference with your television reception, which can be determined by turning the equipment off and on, the following measures are suggested to try to correct the interference by one or more of the following means:

- Reorient or relocate the receiving antenna.
- Increase the distance between the equipment and the receiver.
- Connect the equipment into an outlet on a circuit different from that to which the receiver is connected.
- Consult the dealer or an experienced radio/TV technician for help.

The device has been evaluated to meet general RF exposure requirements. The device can be used in portable exposure condition without restriction.

Use of the Works with Apple badge means that a product has been designed to work specifically with the technology identified in the badge and has been certified by the product manufacturer to meet the specific requirements for interoperability with the technology identified in the badge. The operation of this device or use of this product or its compliance with safety and regulatory requirements may be affected if you use the product with accessories that are not certified by the manufacturer to meet Apple Find My network product specifications and requirements. Apple is not responsible for any damage to your device or loss of data that may occur if you use the product with accessories that are not certified by Apple.

Apple, the Apple logo, Find My, Apple Watch, iPhone, iPad, iPod touch, iPhone OS, iPad OS, and iMessage are trademarks of Apple Inc. in the U.S. and other countries.

2. 当手机与绑定的防丢器通过蓝牙通信时，防丢器会发出提示音，手机本身则会显示通知。如果设备单一方面没有成功连接，防丢器也不能接收其他设备正常连接使用。

苹果手机正常连接使用。如果设备单一方面没有成功连接，防丢器也不能接收其他设备正常连接使用。

苹果手机正常连接使用。如果设备单一方面没有成功连接，防丢器也不能接收其他设备正常连接使用。

**解除绑定物品说明：**

- 长按物品至少 5 秒，屏幕将显示“移除”两屏提示音；
- 长按 5 秒之后，系统会提示“你选择了一项非手机提示音”；
- 长按 5 秒之后，系统会提示“你选择了一项非手机提示音”；
- 长按 5 秒之后，系统会提示“你选择了一项非手机提示音”；

**解除绑定物品说明：**

- 长按物品至少 5 秒，屏幕将显示“移除”两屏提示音；
- 长按 5 秒之后，系统会提示“你选择了一项非手机提示音”；
- 长按 5 秒之后，系统会提示“你选择了一项非手机提示音”；
- 长按 5 秒之后，系统会提示“你选择了一项非手机提示音”；

**解除绑定物品说明：**

- 长按物品至少 5 秒，屏幕将显示“移除”两屏提示音；
- 长按 5 秒之后，系统会提示“你选择了一项非手机提示音”；
- 长按 5 秒之后，系统会提示“你选择了一项非手机提示音”；
- 长按 5 秒之后，系统会提示“你选择了一项非手机提示音”；

**解除绑定物品说明：**

- 长按物品至少 5 秒，屏幕将显示“移除”两屏提示音；
- 长按 5 秒之后，系统会提示“你选择了一项非手机提示音”；
- 长按 5 秒之后，系统会提示“你选择了一项非手机提示音”；
- 长按 5 秒之后，系统会提示“你选择了一项非手机提示音”；

