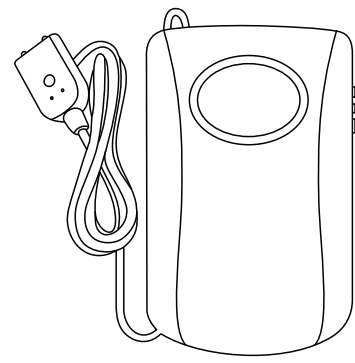


Water leak detector TuYa APP



Specification

WiFi: 802.11b/g/n
 Network: 2.4GHz
 Working voltage: 9V / 6LR61 alkaline battery
 Standby current: $\leq 10\mu\text{A}$
 Working humidity: 20% ~ 85%
 Storage temperature: - 10°C ~ 60°C
 Storage humidity: 0% ~ 90%
 Standby time: 1 year
 Detection cable length: 1m
 Decibel : 130dB
 Size: 55*26*89mm
 G.W.:118g

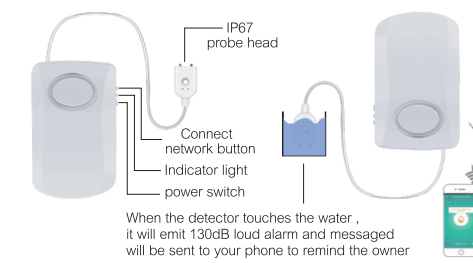
Function

1. Main function: Detect conductive liquid, such as water leakage, water level and ponding.
2. Switch: "On" means power on; "off" means power off.
3. Alarm: when the probe detected the conductive liquid, it will emit 130 dB loud sound and the

1

message will be sent to phone to remind the owner.

4. Choose the duration of alarm sound:
 Press SET button:
 One beep is alarming 10s
 Two beeps is alarming 20s
 Three beeps is alarming 30s



How to use

Download App

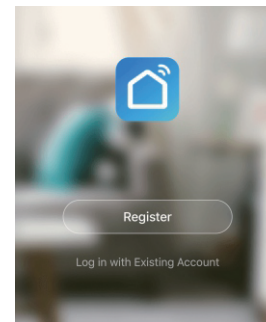
1. Android: Download "Smart Life" from GooglePlay.
2. ISO Iphone: Download "Smart Life" from app store.



2

Run App

1. Run "Smart Life" from your smartphone.
2. Register and log in.



Note

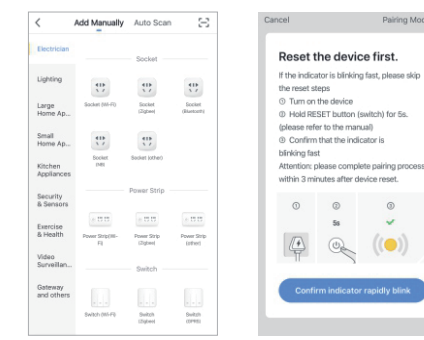
1. Open the phone setting to ensure smart life notification permission is turned on.
2. Open the APP camera permission.
3. Make sure connect 2.4GHz wifi Network as the sensor do not support 5GHz wifi yet.

3

Add water detector device:

1. Add alarm manually

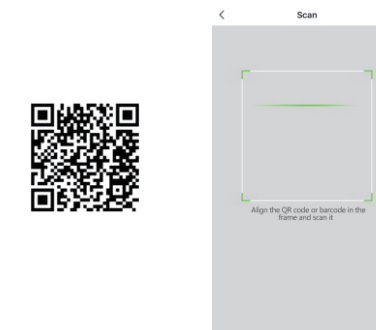
- A. Click "add device" in "My Home" interface of APP — Randomly click on the WiFi device to enter the distribution network.
- B. Press and hold "SET" button for 3s, make sure the indicator light is flashing.
- C. Follow the instruction to complete the network distribution operation.



4

2. Scan code to add alarm

- A. Click "add device" in "My Home" interface of APP— Click on the top right corner of scan, and then scan QR code into the distribution network.
- B. Press and hold "SET" button for 3s, make sure the indicator light is flashing.
- C. Follow the instructions to complete the network distribution operation.



5

Linkage instruction

1. Click alarm device—Enter device interface.
2. Click on the upper right corner of the device interface—Enter device Setting.
3. Click "one click execution and automation" to associate the sensor to complete the association setting.

Share & Push Notification:

1. Click alarm device—Enter device interface.
2. Click on the upper right corner of the device interface—Enter device Setting.
3. Click "Shared device" - add a Shared account to complete the sharing operation.

More service Settings

1. Click on the bottom right corner Me—More Services —Select service .

Note: Telephone notification is not supported in some countries

6

Warranty Card

Thank you for purchasing our product. Please fill in the details below and keep them safe.

| | |
|----------------|--|
| User name | |
| Contact | |
| Model name | |
| Contact add. | |
| Purchase add. | |
| Purchase date. | |

Certificate :



7

FCC Caution:

This device complies with part 15 of the FCC Rules. Operation is subject to the following two conditions: (1) This device may not cause harmful interference, and (2) this device must accept any interference received, including interference that may cause undesired operation.

Any Changes or modifications not expressly approved by the party responsible for compliance could void the user's authority to operate the equipment.

Note: This equipment has been tested and found to comply with the limits for a Class B digital device, pursuant to part 15 of the FCC Rules. These limits are designed to provide reasonable protection against harmful interference in a residential installation. This equipment generates uses and can radiate radio frequency energy and, if not installed and used in accordance with the instructions, may cause harmful interference to radio communications. However, there is no guarantee that interference will not occur in a particular installation. If this equipment does cause harmful interference to radio or television reception, which can be determined by turning the equipment off and on, the user is encouraged to try to correct the interference by one or more of the following measures:

- Reorient or relocate the receiving antenna.
- Increase the separation between the equipment and receiver.
- Connect the equipment into an outlet on a circuit different from that to which the receiver is connected.
- Consult the dealer or an experienced radio/TV technician for help.

This equipment complies with FCC radiation exposure limits set forth for an uncontrolled environment. This equipment should be installed and operated with minimum distance 20cm between the radiator & your body.