



To enable HomeKit, scan this code during the installation steps in the Level app:



Support 7 days a week.  
Visit [www.level.co/support](http://www.level.co/support) for additional help.

2-year limited warranty.  
Visit [www.level.co/warranty](http://www.level.co/warranty) for more information.

This device complies with part 15 of the FCC Rules. Operation is subject to the following two conditions: (1) This device may not cause harmful interference, and (2) this device must accept any interference received, including interference that may cause undesired operation. For more information on FCC compliance, please go to [www.level.co/FCC](http://www.level.co/FCC)

Although the Level Lock Bolt Edition is built to ANSI specifications, it is not an ANSI or BHMA certified door lock. You are responsible for proper installation of the Level Lock and its use with a compatible American standard deadbolt that is operating in good condition. You assume all risk and responsibility in relation to the installation and performance of the lock and any third party components and services used in relation to the lock.

Please follow these suggestions and safeguards to decrease the chances of damage to your Level Lock and to lessen the risk of harm or injury:

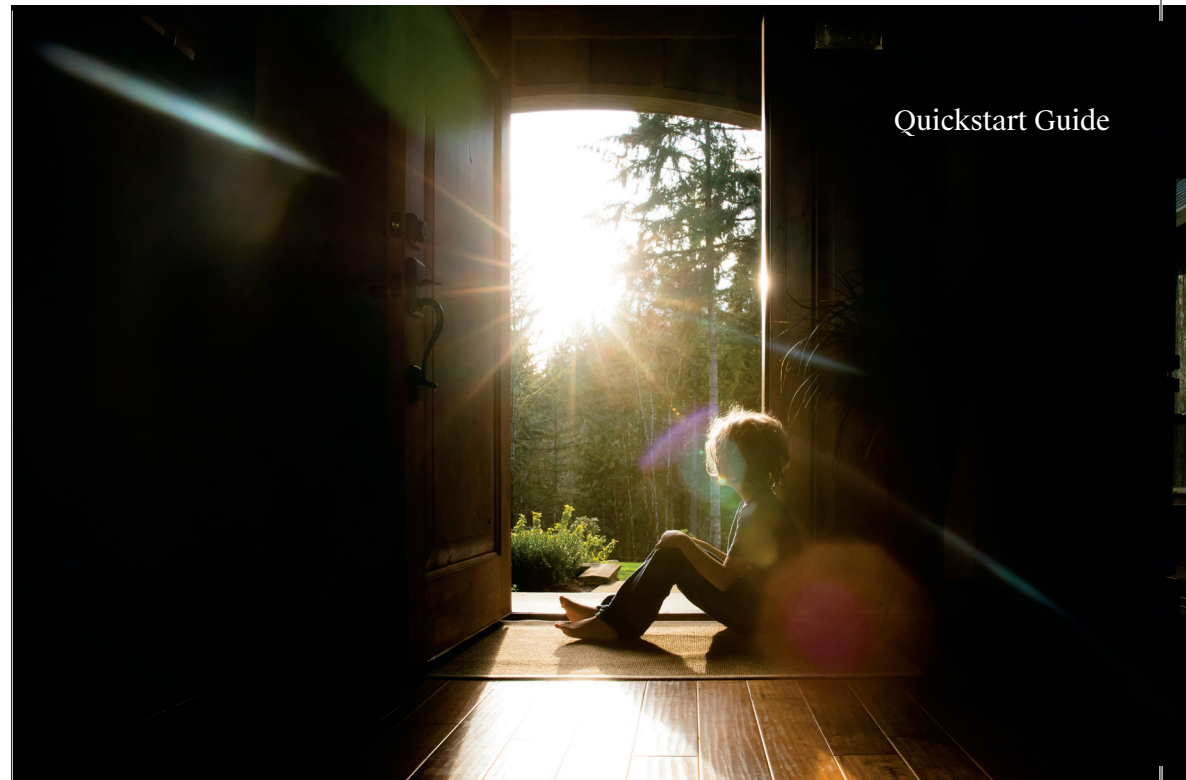
- Use the lock for its intended purposes only.
- Keep body parts away from the lock during operation to avoid injury.
- Do not crush, perforate, drop, throw, or try to deform the lock or battery.
- Do not short external contacts or circuits, expose your lock or battery to water, liquids, or open flames or lit substances, or dispose of them in fire, solvents, or water.
- Do not use the lock or battery if they aren't working properly or have been damaged or cracked.
- Dispose of the lock and battery in accordance with local requirements.
- Do not charge CR2 lithium batteries.

Battery life varies with usage.

Caution: This product comes with small parts and parts with sharp edges that may cause injury or create a choking hazard. To avoid injury or damage, keep away from children.

Revision 1.0

## Quickstart Guide



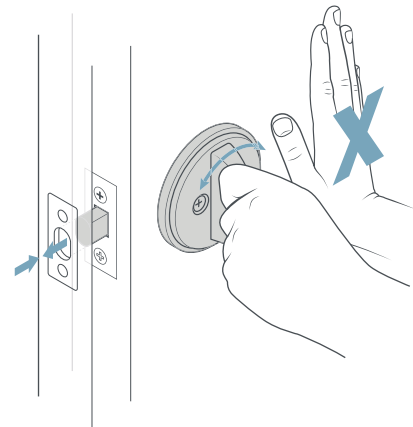
Visit [www.level.co/install](http://www.level.co/install) for more information and tips on installing your Level Lock.

**What you need:**

- ✔ Phillips Screwdriver
- ✔ Compatible iOS or Android Device

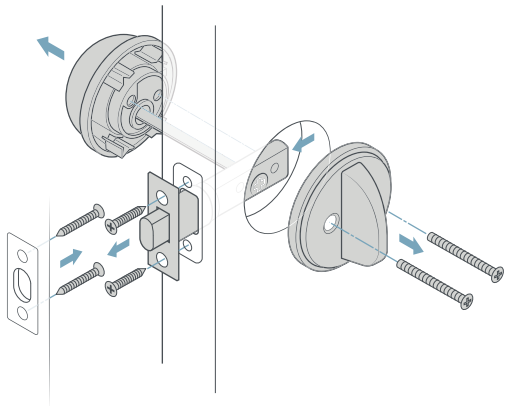
01 **Test your deadbolt.**

Make sure your current deadbolt throws smoothly without pushing or pulling the door.



02 **Disassemble your lock and keep the pieces.**

Unscrew the lock housing, the deadbolt, and the strike plate. Store the deadbolt and strike plate in the Level box.



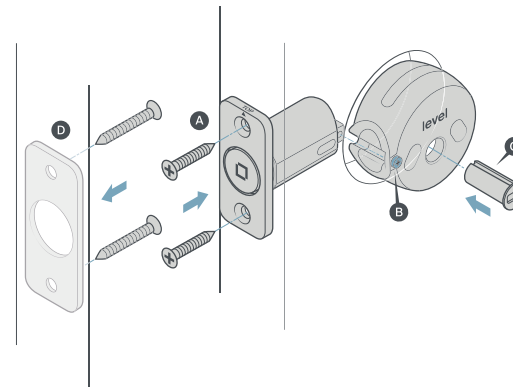
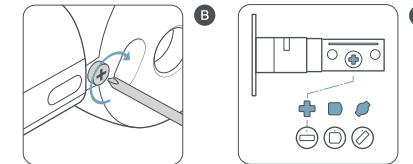
03 **Install your Level Lock and strike plate.**

A. Insert the bolt into your door with the word TOP facing up. Fasten with the provided bolt screws.

B. Slide on the motor and make absolutely sure to **tighten the connecting screw**.

C. Using your old bolt for reference, select the correct tailpiece adapter and insert it into the motor's center hole. Keep the other two adapters.

D. Fasten the strike plate to your door jamb with the provided strike plate screws.

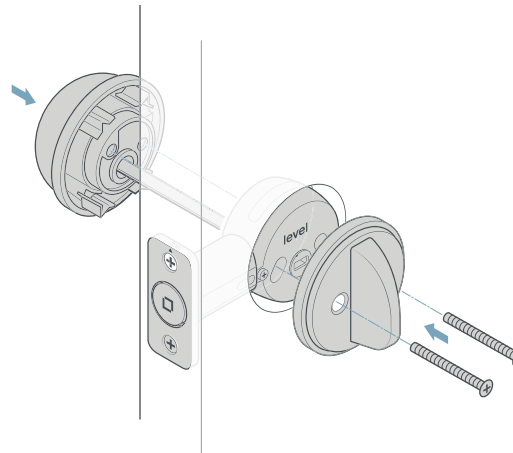


04 **Reassemble your lock using the original pieces.**

Completely rotate the tailpiece in the direction to unlock the door (away from the door edge).

Thread the tailpiece through the adapter and screw your lock housing back together loosely using your original screws.

Align the two sides of your lock and manually test your deadbolt. If it doesn't throw smoothly, recenter the housing, ensuring that one side is not lower than the other. Tighten the screws.



05 **Activate your Level Lock.**

Insert the battery into the end of the deadbolt with the flat (negative) end towards the cap and twist to screw it back in tightly. You'll hear a welcome chirp.

Download the app at [www.level.co/app](http://www.level.co/app), create an account, and connect to your lock.

