

Test Set up

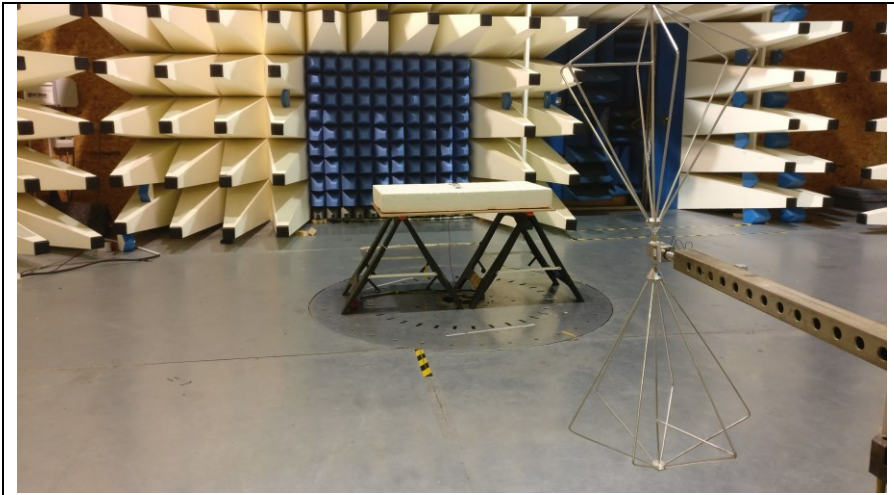


Fig 1a Test setup 30MHz -300MHz Rad Emissions



Fig 1b Test setup 30MHz -300MHz Rad Emissions



Fig 2a Test setup 300MHz -1GHz Rad Emissions

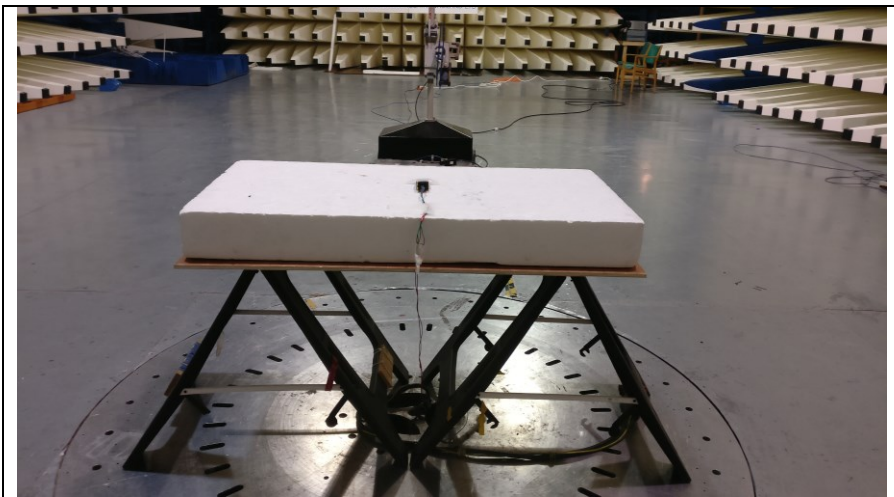


Fig 2b Test setup 300MHz -1GHz Rad Emissions



Fig 3 Test setup 1GHz -18GHz Rad Emission

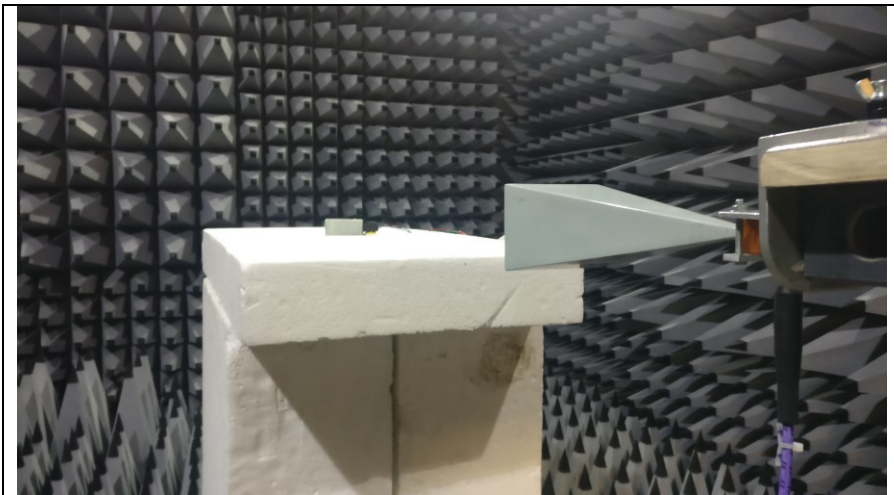


Fig 4 Test setup 18GHz -26GHz Rad Emission 1metre

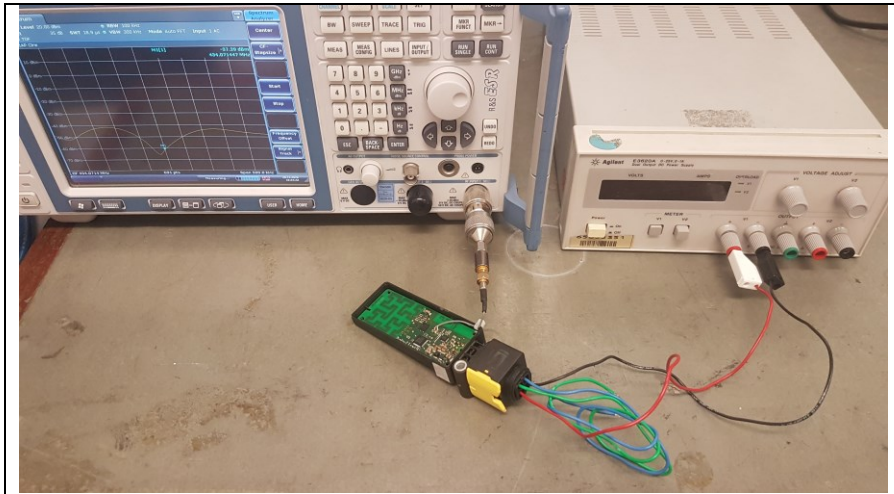


Fig 5 EUT close up

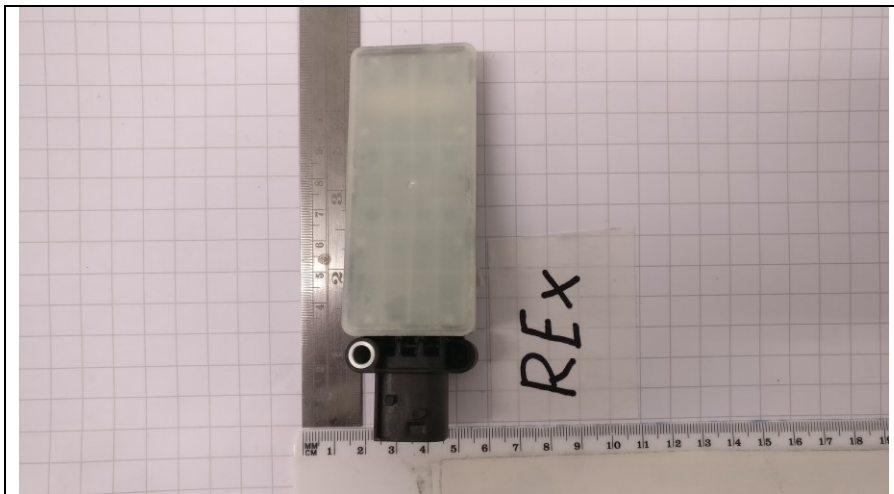


Fig 6 EUT close up



Fig 7 EUT close up