

STK-7039RG



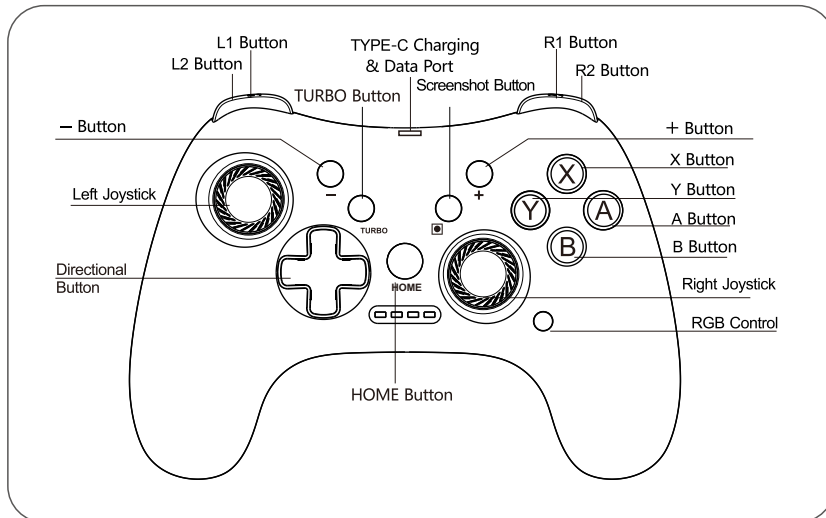
Wireless Controller

For N-S / Lite / OLED / Android / IOS 13.0+ /PC

USER MANUAL

V1.7

● Key Function Instruction



● Controller Mode & Operation

MODE	Switch Controller	Android HID Controller	MFI Controller	PC Controller	
				X-Input Mode	D-Input Mode
CONNECTION	Y+HOME	X+HOME	A+HOME	Cable Connection	
LED	LED1	LED1+LED4	LED1,2,3	LED1,2,3	LED1+LED4
RECONNECTION	HOME	HOME	HOME		

● Sleeping Mode & Reconnect

Sleeping Mode: The controller will turn into sleeping mode automatically without any operation within 5 minutes.

Wake up & Reconnect: Press HOME button long with 3 seconds, the controller will power on and reconnect the device, which connected last time.

● Power Off

Press HOME button long with 3-5 seconds, the controller will power off with all LED lights off.

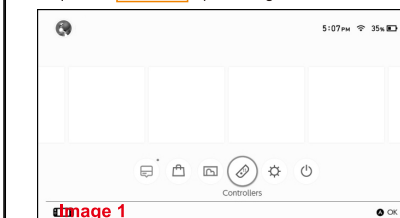
● RGB Lighting Control

Press button to switch the light mode: RGB Breathing Light Mode - Long Light Mode (stop switching color) - Light Off;

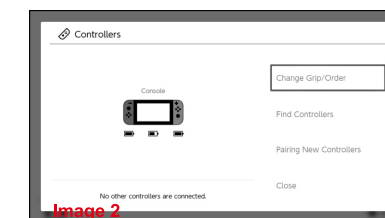
● N-S Controller Mode

(Power on your N-S Console, then follow the steps to pair and connect your controller.)

Step 1: Find **Controllers** Option-Image1

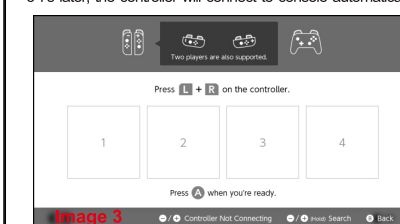


Step 2: Click **Change Grip/Order** -Image2



Step 3: Press **Y+HOME** button power on gamepad, 4 LED lights blink in turn, waiting for the connection to complete-Image3

5-7s later, the controller will connect to console automatically;



Reconnect: Press HOME Button

If your controller was once paired and connected to your N-S console, press the HOME button to rapidly connected next time.

Note:

The gamepad support press HOME button to wake up the console under sleep mode. You just need to press HOME button to finish reconnect.

When one of the following conditions occur, please reconnect referring to first time to pair and connect.
1. Upgrade
2. Reset
3. Change the console.

* Please make sure turn off the Airplane Mode when you connect controller to switch console

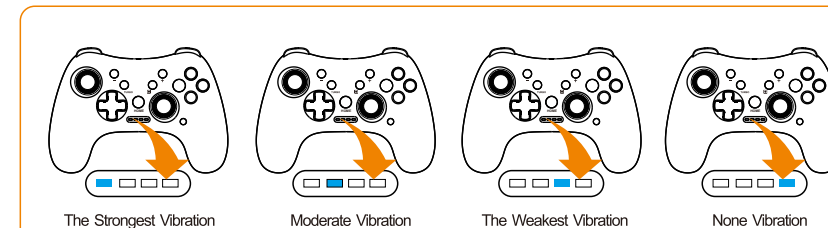
● Adjust Vibration Intensity

There are 4 levels of vibration intensity: The Strongest Vibration, Moderate Vibration, The Weakest Vibration, None vibration

Step 1: Please make sure you connect the controller to the switch console.
Step 2: Press 4 buttons (L, ZL, R and ZR) simultaneously for 5 seconds.
Step 3: Then release the 4 buttons when you feel the vibration.

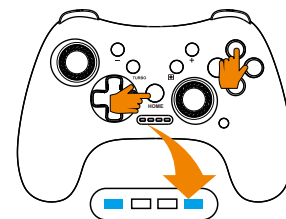
The vibration mode can be adjusted by repeating the above operations.

● Vibration Intensity Indication



● Android Game Controller Mode

Step 1: Press **X+HOME** button to power on the gamepad, **LED1+LED 4** will be twinkling and wait for pairing.
Step 2: Open the interface of Settings on android device, open Bluetooth.
Step 3: Scan the devices and get the name of **STK-7039RG**, click the device into **Pairing and Connect** automatically.
Step 4: **LED1+LED4** indicator will be long on after connected successfully.



Reconnecting:

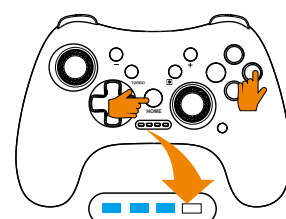
Long press HOME button to power on the gamepad, it will connect automatically.

Note:

1. The Android Game Controller mode allow player to play the android games from google play market, which the games can support game controller ;

● Xbox Wireless Controller Mode for PC, Android & IOS13.0 above

Step 1: Press **A+HOME** button to power on the gamepad, **LED1,2,3** will be twinkling and wait for pairing.
Step 2: Open the interface of Settings on android / IOS device, open Bluetooth.
Step 3: Scan the devices and get the name of **Xbox Wireless Controller**, click the device into **Pairing and Connect** automatically.
Step 4: **LED1,2,3** indicator will be long on after connected successfully.

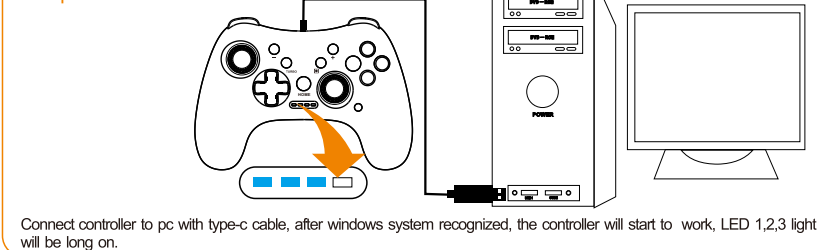


Reconnecting:

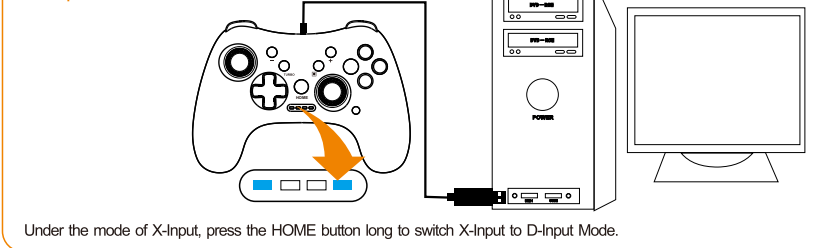
Long press HOME button to power on the gamepad, it will connect automatically.

● PC Wired Controller Mode

X-Input Mode



D-Input Mode



● Turbo / Auto Function

Buttons (which called short function buttons) can be set TURBO/ AUTO : A/ B/ X/ Y/ L/ ZL/ R/ ZR button

Enable/ Disable the TURBO / AUTO speed function:

Step 1: Press the Turbo button and one the function button simultaneously , to enable the Turbo speed function.
Step 2: Repeat the step1 to enable the AUTO function.
Step 3: Repeat the Step1 to disable AUTO function.

Adjust TURBO speed :

Press the TURBO button simultaneously the directional button Up / Down,
Press TURBO+Direction UP button to adjust the TURBO to faster.
Press TURBO+Direction DOWN button to adjust the TURBO to slower.

Clear TURBO /AUTO function:

Press the TURBO button with 5 second long ,wait the LED1,2,3,4 light and turn to flashes together with 1 second's vibration. Then all TURBO function cleared.

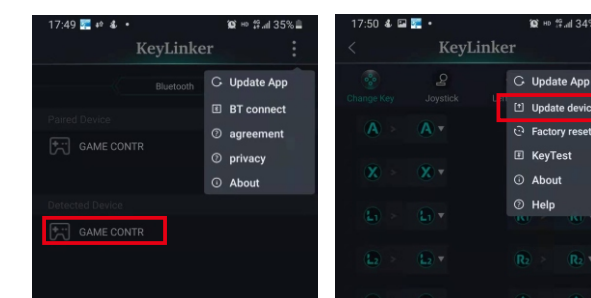
● Specification

Product name: Multifunctional gamepad
Model number: STK - 7039HX
Product size: 152x115x58mm
Product weight: 220g
Power supply: built-in 800mAh polymer battery
Charging interface: Type-c
Game time: 5-10h
Charging time: 2-2.5H
Packing: color box
Package Contents: gamepad, charging cable, instruction manual

● Update

If there is problem for the connection while the console update, we can offer the update method as follows:

You can download the "Keylinker" app from the google play or apple store, then instal to your cellphone; follow the step to update your controller.



1. Search the controller

2. After connected, click "Update device"

****Factory Motion Controls Calibration****

Step 1: Please make sure your controller stays at power off status, then put it on flat surface.
Step 2: Press the "X", "B", "HOME" 3 buttons simultaneously, the Group A indicators and Group B indicators will flash alternately (LED1&LED2/ LED3&LED4)
Step 3: Press the "+" button and 4 LED indicators will flash alternately.
Step 4: After about 15 seconds, all indicators will turn off, which means the controller finish calibrating.

****Calibrate Control Sticks****

If the characters in the games is automatically drifting, please complete the "calibrate motion controls" by following steps:

Step 1: System Setting-Controller and Sensors-Calibrate Control Sticks
Step 2: Enter calibrate control sticks interface, operate it according to the guide on NS console.

FCC Information and Copyright

This equipment has been tested and found to comply with the limits for a Class B digital device, pursuant to part 15 of the FCC Rules.

These limits are designed to provide reasonable protection against harmful interference in a residential installation. This equipment generates,

uses and can radiate radio frequency energy and, if not installed and used in accordance with the instructions, may cause harmful interference

to radio communications. However, there is no guarantee that interference will not occur in a particular installation. If this equipment does

cause harmful interference to radio or television reception, which can be determined by turning the equipment off and on, the user is

encouraged to try to correct the interference by one or more of the following measures:

- Reorient or relocate the receiving antenna.
- Increase the separation between the equipment and receiver.
- Connect the equipment into an outlet on a circuit different from that to which the receiver is connected.
- Consult the dealer or an experienced radio/TV technician for help.

15.19 Labelling requirements.

This device complies with part 15 of the FCC Rules. Operation is subject to the following two conditions:

- (1) This device may not cause harmful interference, and
- (2) this device must accept any interference received, including interference that may cause undesired operation.

changes or modifications not expressly approved by the party responsible for compliance could void the user's authority to operate the equipment.

FCC RF warning statement: the device has been evaluated to meet general RF exposure requirement , The device can be used in portable exposure condition without restriction.