

RF EXPOSURE EVALUATION

1. PRODUCT INFORMATION

Product Description	BLUETOOTH WIRELESS GAMEPAD
Model Name	STK-7007F
FCC ID	2ATI7STK-7007F

2. EVALUATION METHOD

According to 447498 D01 General RF Exposure Guidance v05

The 1-g and 10-g SAR test exclusion thresholds for 100 MHz to 6 GHz at test separation distances ≤ 50 mm are determined by:

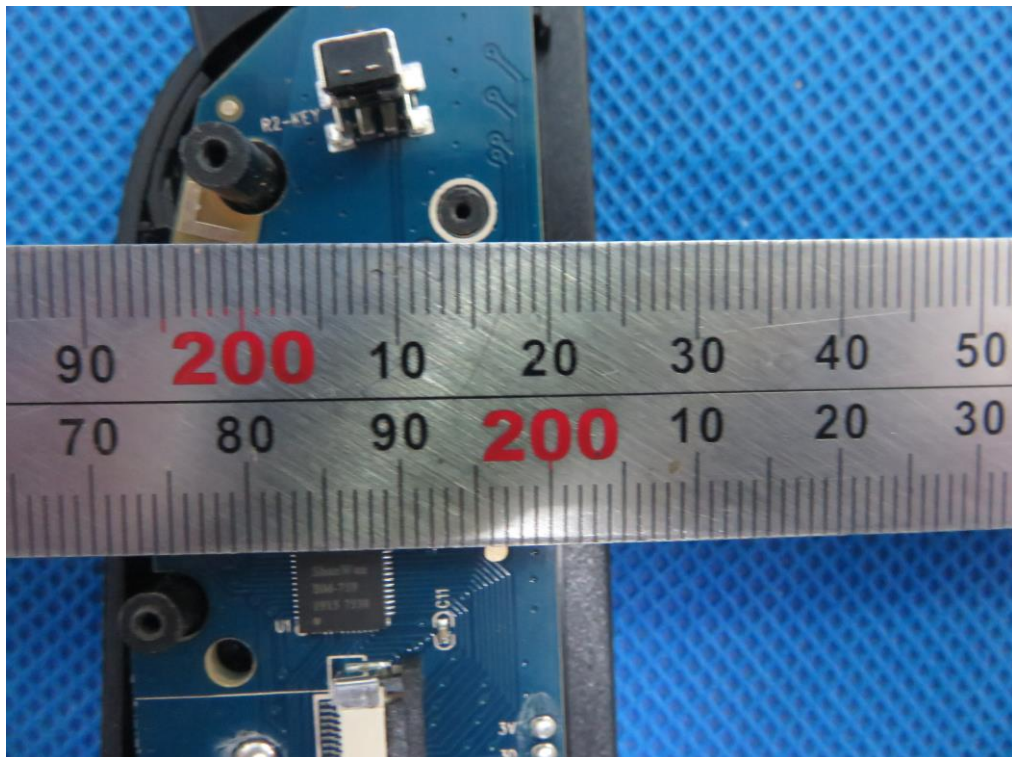
$[(\text{max. power of channel, including tune-up tolerance, mW}) / (\text{min. test separation distance, mm})] \cdot [\sqrt{f(\text{GHz})}] \leq 3.0$ for 1-g SAR and ≤ 7.5 for 10-g extremity SAR.

Where $f(\text{GHz})$ is the RF channel transmit frequency in GHz

Power and distance are rounded to the nearest mW and mm before calculation

According to RF Exposure Procedures TCB Workshop April 2016. Bluetooth Sleeve Accessories highest reported SAR for all applicable host devices for head, body, simultaneous transmission etc. are less than 1.4 W/kg

Bluetooth antenna is ≥ 2 cm from any antenna in the host device:



3. CALCULATION

$$P_t = -3.113 \text{ dBm} = 0.49 \text{ mW} \leq 5 \text{ mW}$$

The value of the Maximum output power P_t is referred to the test report of the CFR47 §15.247.

The result for RF exposure evaluation $\text{SAR} = (0.49 \text{ mW} / 5 \text{ mm}) \cdot [\sqrt{2.440 \text{ (GHz)}}] = 0.15 < 3.0$ for 1-g SAR and ≤ 7.5 for 10-g extremity SAR.

The highest reported SAR of all exposure conditions from all equipment approvals for each applicable host device =
 $1.4 \text{ W/Kg} - 0.15 \text{ W/Kg} = 1.25 \text{ W/Kg}$

4. CONCLUSION

The SAR evaluation is not required.