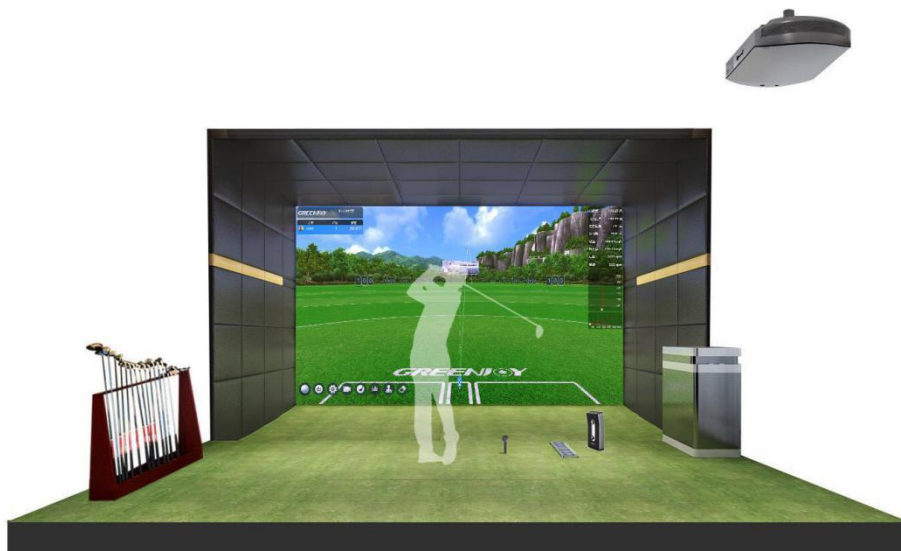
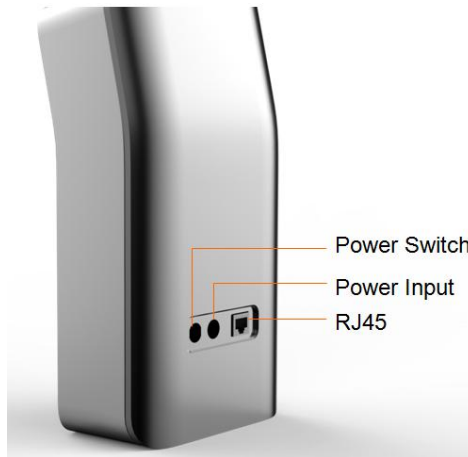


Overview



Application





Power Switch

Turn on the GDS High Speed Sensor by **flipping** the button, and Turn off the GDS High Speed Sensor by **flipping** the button again.

Power input

24V 5A power adapter (standard configuration)

RJ45

Connect the device to PC via a network cable, So **they** can communicate with each other

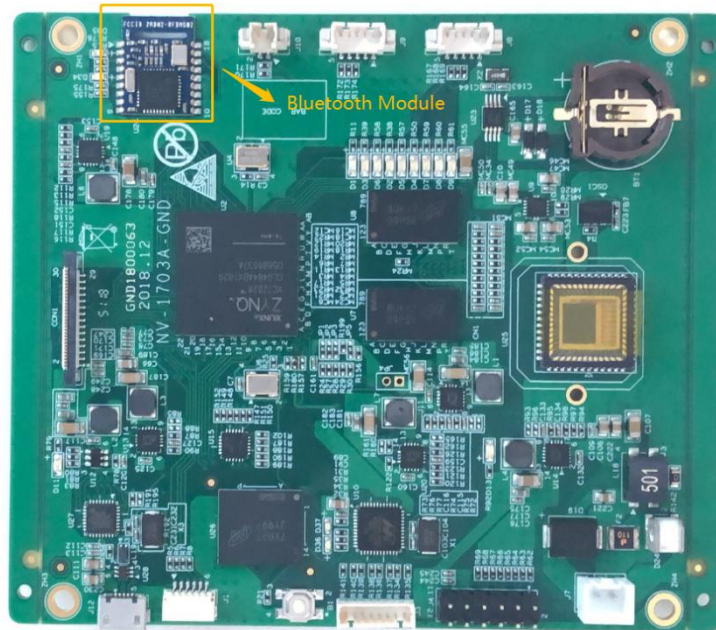


Bluetooth Module

The Bluetooth module with PCB Antenna **is** pasted on PCB.



Bluetooth Module



PCB

Status indicator



When the indicator color is blue, it indicates that the device is running normally. But when the light turns red, it means that the device is faulty and needs to be checked. In addition, when the light is green, the sensor detects the ball and you can play.

Summary

The following are two methods of communication between PC and GDS High speed sensor. One is the network cable (default) and the other is USB Bluetooth module (optional).

FCC Statement

This equipment has been tested and found to comply with the limits for a Class B digital device, pursuant to part 15 of the FCC rules. These limits are designed to provide reasonable protection against harmful interference in a residential installation. This equipment generates, uses and can radiate radio frequency energy and, if not installed and used in accordance with the instructions, may cause harmful interference to radio communications. However, there is no guarantee that interference will not occur in a particular installation. If this equipment does cause harmful interference to radio or television reception, which can be determined by turning the equipment off and on, the user is encouraged to try to correct the interference by one or more of the following measures:

- Reorient or relocate the receiving antenna.
- Increase the separation between the equipment and receiver.
- Connect the equipment into an outlet on a circuit different from that to which the receiver is connected.
- Consult the dealer or an experienced radio/TV technician for help.

To assure continued compliance, any changes or modifications not expressly approved by the party.

Responsible for compliance could void the user's authority to operate this equipment. (Example- use only shielded interface cables when connecting to computer or peripheral devices).

This equipment complies with Part 15 of the FCC Rules. Operation is subject to the following two conditions:

- (1) This device may not cause harmful interference, and
- (2) This device must accept any interference received, including interference that may cause undesired operation.

FCC Radiation Exposure Statement:

The equipment complies with FCC Radiation exposure limits set forth for uncontrolled environment. This equipment should be installed and operated with minimum distance 20cm between the radiator and your body.

Any Changes or modifications not expressly approved by the party responsible for compliance could void the user's authority to operate the equipment.