

## ERA-DCKIT (ERA-RXPG + ERA-PBTX)

### Introduction

The ERA-DCKIT is a long range wireless door chime kit with the following two components; the ERA-RXPG plugin receiver & the ERA-PBTX. This manual outlines how to program the ERA-PBTX push button to the ERA-RXPG receiver, & will serve as the product manual for the kit & both individual products in the kit.

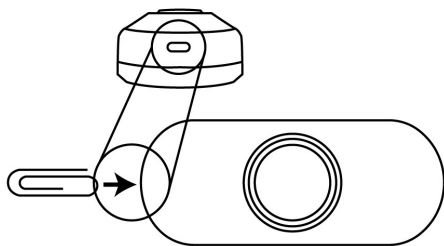
### Helpful Notes:

- All ERA transmitters are compatible with all ERA receivers.
- The ERA-PBTX is a push button transmitter that must be programmed to a ERA compatible receiver to operated.
- The push button is outdoor rated and contains a silicone gasket to keep moisture out. Mount with the small weep hole pointing down to ensure any moisture in the unit evaporates out.
- The ERA-RXPG is a plugin receiver and is indoor rated only.
- Push button measures 3.00" H x 2.25" W x 1.75" D.
- The halo ring around the center push is constantly illuminating for visibility at night, but consumes very little power.
- When triggered (center push button is pressed) the center halo illuminates brightly for approximately 2 seconds.
- The ERA-RXPG has three operational modes; strobe only, sound only, strobe + sound.
- The ERA-RXPG may be programmed with up to 12 ERA transmitters.
- The range (line of site) of a ERA transmitter to receiver is 4,000 ft.

### Push Button Battery Installation:

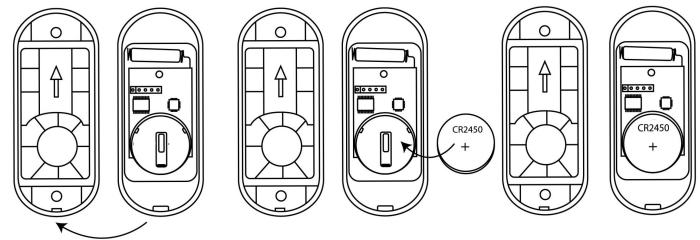
1. Open the front cover by insert a small paper clip into the square hole on the bottom of the unit (figure 1) & gently push in to separate the top & bottom half of the case.
2. Remove top half of case from lower case (figure 2).
3. Install the included CR2450A battery into the holder with positive (+) facing up (figure 2).
4. Test the battery by pressing the center push. The green halo should illuminate for approximately 2 seconds, signaling transmission.

**Note:** Program the push button to a compatible receiver PRIOR to mounting the push button.



(figure 1)

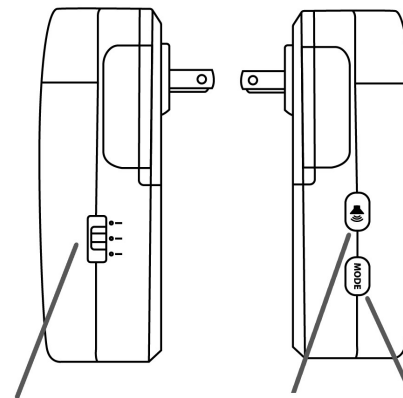
### Push Button Battery Installation (cont):



(figure 2)

### Pair Transmitter to Receiver:

The transmitter works with all ERA receivers. Basic programming calls for the user to program the transmitters with a receiver & select a melody for the transmitter to instruct the receiver to play when triggered. In the example below, the transmitter will be programmed to the ERA-RXPG plugin receiver. If you are using a different ERA receiver, follow the programming instructions for that receiver to put the receiver in programming mode and to change the melody.



(figure 3)

Operation Mode Selector Switch	Melody Selector/ Volume Control	Programming Button
-----------------------------------	------------------------------------	-----------------------

1. Ensure the ERA-RXPG is plugged into a standard wall outlet.
2. On the ERA-RXPG receiver, hold down the "mode" (bottom button in figure 3) button until you hear a short tone sound & the red LED begins to blink (figure 3). This denotes the unit is in programming mode.
3. Scroll through available melodies by pressing the melody selector button. Stop pushing this button when you hear the sound you want the respective push button to play.
4. Push the center push on the push button. The receiver will play a quick chime sound denoting the receiver is in program mode. The red LED should still be blinking.
5. If you want to program a second transmitter (push button, door contact, motion sensor, or driveway sensor) push the sound button (the button on top) to scroll through available melodies. Once you have the sound you want, stop pressing the sound button and repeat step 2 above, trigger the sensor/transmitter.
6. Once you have programmed all the transmitter, exit program mode by holding down the "mode" button until you hear a short tone sound and the red LED disappears. (approx 3 sec)

### Test the Programming of Transmitter to Receiver:

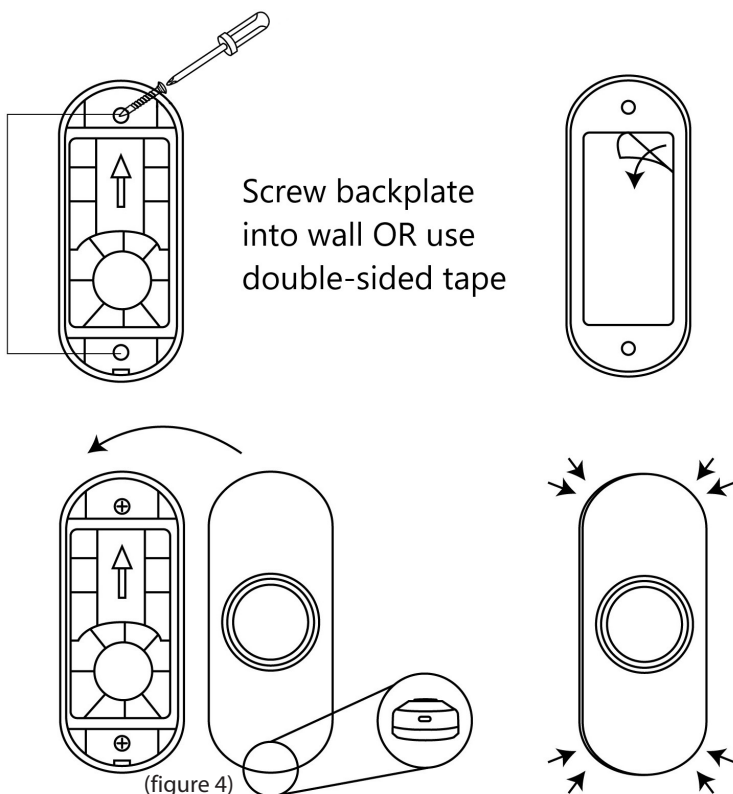
- Push the center button of the push button.
- When pressed, the green halo around the center push should brightly illuminate.
- Ensure the programmed receiver is plugged in. When triggered it should play the selected melody and/or flash (depending on operational mode selected on the receiver.)

### Mounting the Push Button:

Ensure you have programmed & tested the push button prior to mounting.

There are two mounting options for the ERA-PBTX. The first method is to mount the unit using the supplied screws. The second is using the supplied double-sided tape.

1. Open the front cover by insert a small paper clip into the square hole on the bottom of the unit (figure 1) & gently push in to separate the top & bottom half of the case.
2. Remove top half of case from lower case.
3. Place back cover of push button on wall where you want to mount it. Ensure the arrow on back cover is pointing up.
4. Mount back half of case on wall.
5. Place top half (with battery installed) over bottom half. Make sure the small opening in top half is down (battery is down). Place bottom of the top half over the small protruding clip on bottom half & snap into place.



### Low Battery Indicator:

When the battery in the ERA-PBTX is low & needs to be replaced, it will signal the receiver to double play on the programmed receiver when triggered. For example, if you have programmed the "ding-dong" sound for the push button to play on the receiver, when the battery in the push button is low, the receiver will play "ding-dong," "ding-dong," double playing to notify you to change the battery.

### Programming with Other Receivers:

The ERA-PBTX is compatible with the ERA-VPRX Portable Receiver & the ERA-DCRX Receiver. The programming is very similar for these receivers as well. The only change is how to put the respective receiver into programming mode, choosing a melody, & changing the zone. Please consult the manual for the specific receiver when programming.

### TECHNICAL SUPPORT

If you encounter any difficulty in the operation of this product after reading the manual, please contact us. You can reach us by phone at 904-245-1184 from **8:00 AM to 5:00 PM Monday through Friday** (Eastern Standard Time). We will be happy to answer your questions and help you in any way we can.

### WARRANTY

Safeguard Supply warrants this product to be free of defects in material and workmanship for a period of one year from the date of purchase. This warranty does not cover damage resulting from accident, abuse, act of God or improper operation. If this product does become defective, simply return it to Safeguard Supply. Please include a note describing the troubles along with your name and return address as well as the original sales receipt. If the product is covered under warranty it will be repaired or replaced at no charge. If it is not covered by warranty, you will be notified of any charges before work is done.

Safeguard Supply, 2260 Moon Station Ct. NW #110, Kennesaw, GA 30144  
Phone: (678) 214-4212, [www.safeguardsupply.com](http://www.safeguardsupply.com)

### Legal Notices

This device complies with Part 15 of the FCC Rules. Operation is subject to the following two conditions: (1) this device may not cause harmful interference, and (2) this device must accept any interference received, including interference that may cause undesired operation. changes or modifications not expressly approved by the party responsible for compliance could void the user's authority to operate the equipment.

This equipment has been tested and found to comply with the limits for a Class B digital device, pursuant to Part 15 of the FCC Rules. These limits are designed to provide reasonable protection against harmful interference in a residential installation. This equipment generates, uses and can radiate radio frequency energy and, if not installed and used in accordance with the instructions, may cause harmful interference to radio communications. However, there is no guarantee that interference will not occur in a particular installation.

If this equipment does cause harmful interference to radio or television reception, which can be determined by turning the equipment off and on, the user is encouraged to try to correct the interference by one or more of the following measures:

- Reorient or relocate the receiving antenna.
- Increase the separation between the equipment and receiver.
- Connect the equipment into an outlet on a circuit different from that to which the receiver is connected.
- Consult the dealer or an experienced radio/TV technician for help.



**WARNING:** Cancer and Reproductive Harm. Go to [www.P65Warnings.ca.gov](http://www.P65Warnings.ca.gov) for more information.