



ERA-PBTX Wireless Push Button

Introduction

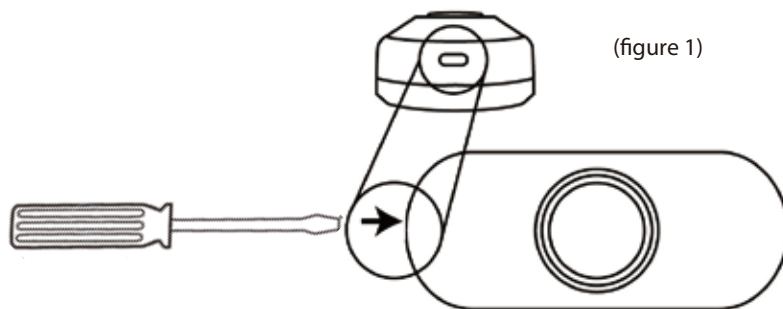
The ERA-PBTX is a long range wireless doorbell push button compatible with all ERA receivers. This manual outlines how to program the ERA-PBTX push button to an ERA receiver, & will serve as the product manual for the kit & both individual products in the kit.

Helpful Notes:

- All ERA transmitters are compatible with all ERA receivers.
- The ERA-PBTX is a push button transmitter that must be programmed to an ERA compatible receiver to operated.
- The push button is outdoor rated and contains a silicone gasket to keep moisture out. Mount with the small weep hole pointing down to ensure any moisture in the unit evaporates out.
- Push button measures 3.00" H x 2.25" W x 1.75" D.
- The halo ring around the center push will illuminate dimly for visibility at night (this feature consumes very little power.)
- When triggered (center push button is pressed) the center halo illuminates brightly for approximately 2 seconds.
- When programming multiple transmitters to a ERA receiver, common practice is to program a distinct melody for each programmed transmitter to distinguish which transmitter was triggered.

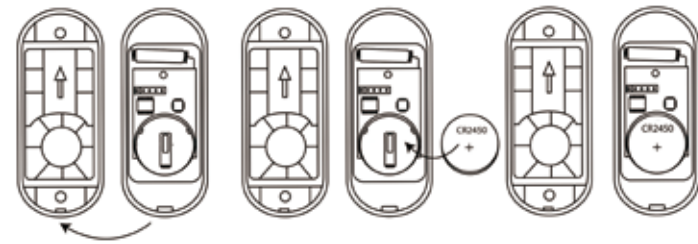
Button Battery Installation:

1. Open the front cover by inserting the included screwdriver into the square hole on the bottom of the unit (figure 1) & gently push & then separate the top & bottom halves of the case.
2. Remove top part of case from lower part of case (figure 2).
3. Install the included **CR2450A** lithium battery into the holder with positive (+) side of the battery facing up (figure 2).
4. Test the battery by pressing the center push. The green halo should illuminate for approximately 2 seconds, signaling transmission. **Note:** Program the push button to a compatible receiver PRIOR to mounting the push button.



(figure 1)

Push Button Battery Installation (cont):



(figure 2)

Pair Transmitter to Receiver:

(always test unit prior to installation)

The transmitter works with all ERA receivers. Basic programming calls for the user to program a transmitter to the receiver & select a melody for the receiver to play when triggered by the transmitter.

Each receiver has a slightly different way to put it into "programming mode." Consult the section "Pair to a Receiver" in the receiver's user manual for details. Once the receiver is in programming mode, the receiver's manual will instruct you to "trigger the transmitter," which is outlined in step #4 below.

Once the transmitter is successfully programmed to the receiver, follow the receiver's manual to change the melody, program an additional transmitter to the receiver, or exit programming mode.

1. Ensure the battery is installed in the ERA-PBTX transmitter.
2. Ensure the receiver you are programming the transmitter to is powered up and working correctly.
3. Put the receiver in programming mode. Consult the receiver user manual & follow the steps for putting it into programming mode.
4. Trigger the ERA-PBTX transmitter by pressing the center button. The green halo around the center button should illuminate brightly.
5. The receiver will respond to notify you this transmitter has been successfully programmed. Consult the specific receiver's manual for details.
6. Follow the receiver's instruction manual to end programming or to program an additional transmitter.

Test the Programming of Transmitter to Receiver:

- Ensure the ERA receiver is powered on & the battery is installed in the ERA-PBTX push button.
- Test the range of the push button to the receiver prior to mounting the push button.

Test the Programming of Transmitter to Receiver (cont):

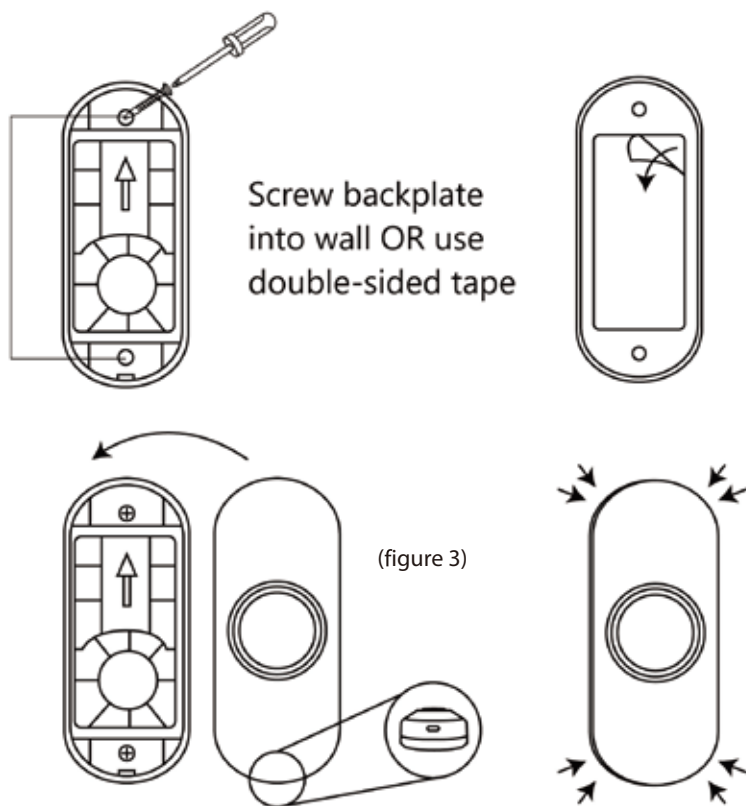
- When pressed, the green halo around the center push should brightly illuminate.
- When triggered the receiver should play the selected melody and/or flash.

Mounting the Push Button:

Ensure you have programmed & tested the push button prior to mounting.

There are two mounting options for the ERA-PBTX. The first method is to mount the unit using the supplied screws. The second is using the supplied double-sided tape.

1. Open the front cover by inserting the included screwdriver into the square hole on the bottom of the unit (figure 1 above) & gently push in to separate the top & bottom half of the case.
2. Remove top half of case from lower half of case.
3. Place back cover of push button on wall where you want to mount it. The back cover may be mounted using the supplied screws or double sided mounting tape.
4. Ensure the arrow inside the back cover is pointing up.
5. Mount back half of case on wall (figure 3.)
6. Place top half (with battery installed) over bottom half. Make sure the small opening (see figure 1 above) on top half is pointing down. Place bottom of the top half over the small protruding clip on bottom half & snap into place.



Low Battery Indicator:

When the battery in the ERA-PBTX is low & needs to be replaced, it will signal the receiver to double play the programmed melody on the receiver when triggered.

For example, if you have programmed the "ding-dong" sound for the push button, when the battery in the push button is low, the receiver will play "ding-dong...ding-dong" when triggered to notify you to change the battery.

Programming with Other Receivers:

The ERA-PBTX is compatible with the ERA-RXPG, the ERA-VPRX Portable Receiver & the ERA-DCRX Receiver. The programming is very similar for these receivers. The only change is how to put the respective receiver into programming mode, choosing a melody, & changing the zone. Please consult the manual for the specific receiver when programming.

TECHNICAL SUPPORT

If you encounter any difficulties in the operation or programming of this product after reading the manual, please contact us. You can reach us by phone at **904-245-1184** from **8:00 AM to 5:00 PM Monday - Friday** (Eastern Standard Time). We will be happy to answer your questions and help you in any way possible.

WARRANTY

Safeguard Supply warrants this product to be free of defects in material and workmanship for a period of one year from the date of purchase. This warranty does not cover damage resulting from accident, abuse, act of God or improper operation. If this product does become defective, simply return it to Safeguard Supply. Please include a note describing the troubles along with your name and return address as well as the original sales receipt. If the product is covered under warranty it will be repaired or replaced at no charge. If it is not covered by warranty, you will be notified of any charges before work is done.

Safeguard Supply: 1680 Roberts Blvd. NW #404, Kennesaw, GA 30144
Phone: (678) 214-4212, www.safeguardsupply.com, info@safeguardsupply.com.

Legal Notices

This device complies with Part 15 of the FCC Rules. Operation is subject to the following two conditions: (1) this device may not cause harmful interference, and (2) this device must accept any interference received, including interference that may cause undesired operation. changes or modifications not expressly approved by the party responsible for compliance could void the user's authority to operate the equipment.

This equipment has been tested and found to comply with the limits for a Class B digital device, pursuant to Part 15 of the FCC Rules. These limits are designed to provide reasonable protection against harmful interference in a residential installation. This equipment generates, uses and can radiate radio frequency energy and, if not installed and used in accordance with the instructions, may cause harmful interference to radio communications. However, there is no guarantee that interference will not occur in a particular installation.

If this equipment does cause harmful interference to radio or television reception, which can be determined by turning the equipment off and on, the user is encouraged to try to correct the interference by one or more of the following measures:

- Reorient or relocate the receiving antenna.
- Increase the separation between the equipment and receiver.
- Connect the equipment into an outlet on a circuit different from that to which the receiver is connected.
- Consult the dealer or an experienced radio/TV technician for help.

This equipment complies with FCC radiation exposure limits set forth for an uncontrolled environment. This equipment should be installed and operated with minimum distance 5mm between the radiator and your body. This transmitter must not be co-located or operating in conjunction with any other antenna or transmitter.



WARNING: Cancer and Reproductive Harm. Go to www.P65Warnings.ca.gov for more information.