



FCC PART 15C

TEST REPORT

For

Ubio Labs, Inc.

2821 Northup Way, Suite 250, Bellevue, WA 98004, USA

FCC ID: 2ATGY-AWC1070

Report Type: Original Report	Product Type: Wireless Charging Stand and Pad
Report Number:	RGMA200302001-00A
Report Date:	2020-03-16
Reviewed By:	Jimmy Xiao <i>Jimmy Xiao</i> RF Engineer
Prepared By:	Bay Area Compliance Laboratories Corp. (Shenzhen) 6/F., West Wing, Third Phase of Wanli Industrial Building, Shihua Road, Futian Free Trade Zone, Shenzhen, Guangdong, China Tel: +86-755-33320018 Fax: +86-755-33320008 www.baclcorp.com.cn

Note: This report must not be used by the customer to claim product certification, approval, or endorsement by A2LA* or any agency of the Federal Government. This report may contain data that are not covered by the A2LA accreditation and are marked with an asterisk “★”.

BACL is not responsible for the authenticity of any test data provided by the applicant. Data included from the applicant that may affect test results are marked with an asterisk “*”. Customer model name, addresses, names, trademarks etc. are not considered data.

This report cannot be reproduced except in full, without prior written approval of the Company. Unless otherwise stated the results shown in this test report refer only to the sample(s) tested.

TABLE OF CONTENTS

GENERAL INFORMATION.....	3
PRODUCT DESCRIPTION FOR EQUIPMENT UNDER TEST (EUT)	3
OBJECTIVE	3
RELATED SUBMITTAL(S)/GRANT(S).....	3
TEST METHODOLOGY	3
MEASUREMENT UNCERTAINTY	4
TEST FACILITY	4
SYSTEM TEST CONFIGURATION.....	5
JUSTIFICATION	5
EUT EXERCISE SOFTWARE	5
SUPPORT EQUIPMENT LIST AND DETAILS	5
EXTERNAL I/O CABLE.....	5
BLOCK DIAGRAM OF TEST SETUP	6
SUMMARY OF TEST RESULTS	7
TEST EQUIPMENT LIST	8
FCC §1.1310, §2.1091- MAXIMUM PERMISSIBLE EXPOSURE (MPE).....	9
APPLICABLE STANDARD	9
BLOCK DIAGRAM OF TEST SETUP	10
TEST DATA	10
FCC§15.203 – ANTENNA REQUIREMENT.....	13
APPLICABLE STANDARD	13
ANTENNA CONNECTED CONSTRUCTION	13
FCC §15.207 – AC LINE CONDUCTED EMISSION	14
APPLICABLE STANDARD	14
EUT SETUP	14
EMI TEST RECEIVER SETUP.....	14
TEST PROCEDURE	14
CORRECTED FACTOR & MARGIN CALCULATION	15
TEST RESULTS SUMMARY	15
TEST DATA	15
FCC §15.205 & §15.209 - RADIATED EMISSIONS TEST	18
APPLICABLE STANDARD	18
EUT SETUP	18
EMI TEST RECEIVER SETUP.....	19
CORRECTED AMPLITUDE & MARGIN CALCULATION	19
TEST RESULTS SUMMARY	19
TEST DATA	19

GENERAL INFORMATION

Product Description for Equipment Under Test (EUT)

Product	Wireless Charging Stand and Pad
Tested Model	AWC1070SG
Multiple Models	AWC1070AW, AWC1070XX (X should be any Arabian number or English letter or blank)
Model Difference	Refer to the DoS letter
Frequency Range	110 kHz-205kHz
Antenna Specification	Coil
Voltage Range	DC 18V from adapter
Date of Test	2020/03/09~2020/03/12
Sample serial number	RGMA200302001-RF-S1 (Assigned by BACL, Shenzhen)
Received date	2020/03/02
Sample/EUT Status	Good Condition
Adapter information	Model: CHG1147SG Input: AC 110-240V, 50-60Hz, 1.3A Output: DC 18V, 3.5A

Objective

This report is prepared on behalf of *Ubio Labs, Inc.* in accordance with Part 2, Subpart J, and Part 15, Subparts A and C of the Federal Communications Commission's rules.

The objective is to determine the compliance of EUT with FCC rules, section 15.203, 15.205, 15.207 and 15.209.

Related Submittal(s)/Grant(s)

No Related Submittal(s)/Grant(s).

Test Methodology

All measurements contained in this report were conducted with ANSI C63.10-2013, American National Standard of Procedures for Compliance Testing of Unlicensed Wireless Devices.

All emissions measurement was performed at Bay Area Compliance Laboratories Corp. (Shenzhen). The radiated testing was performed at an antenna-to-EUT distance of 3 meters.

Measurement Uncertainty

Item		Uncertainty
AC Power Line Conducted Emissions		±1.95 dB
Radiated emission	9 kHz~30MHz	±4.52 dB
	30MHz~1 GHz	±5.81 dB
Occupied Bandwidth		±0.5 kHz
Temperature		±3.0 °C
Humidity		±6 %

Note: The extended uncertainty given in this report is obtained by combining the standard uncertainty times the coverage factor K with the 95% confidence interval. Otherwise required by the applicant or Product Regulations, Decision Rule in this report did not consider the uncertainty.

Test Facility

The Test site used by Bay Area Compliance Laboratories Corp. (Shenzhen) to collect test data is located on the 6/F., West Wing, Third Phase of Wanli Industrial Building, Shihua Road, Futian Free Trade Zone, Shenzhen, Guangdong, China.

The test site has been approved by the FCC under the KDB 974614 D01 and is listed in the FCC Public Access Link (PAL) database, FCC Registration No.: 342867, the FCC Designation No.: CN1221.

The test site has been registered with ISED Canada under ISED Canada Registration Number 3062B.

SYSTEM TEST CONFIGURATION

Justification

The system was configured for testing in a test mode

The device is a wireless charger operation on frequency 110 kHz - 205 kHz.

EUT Exercise Software

No software used in test.

Support Equipment List and Details

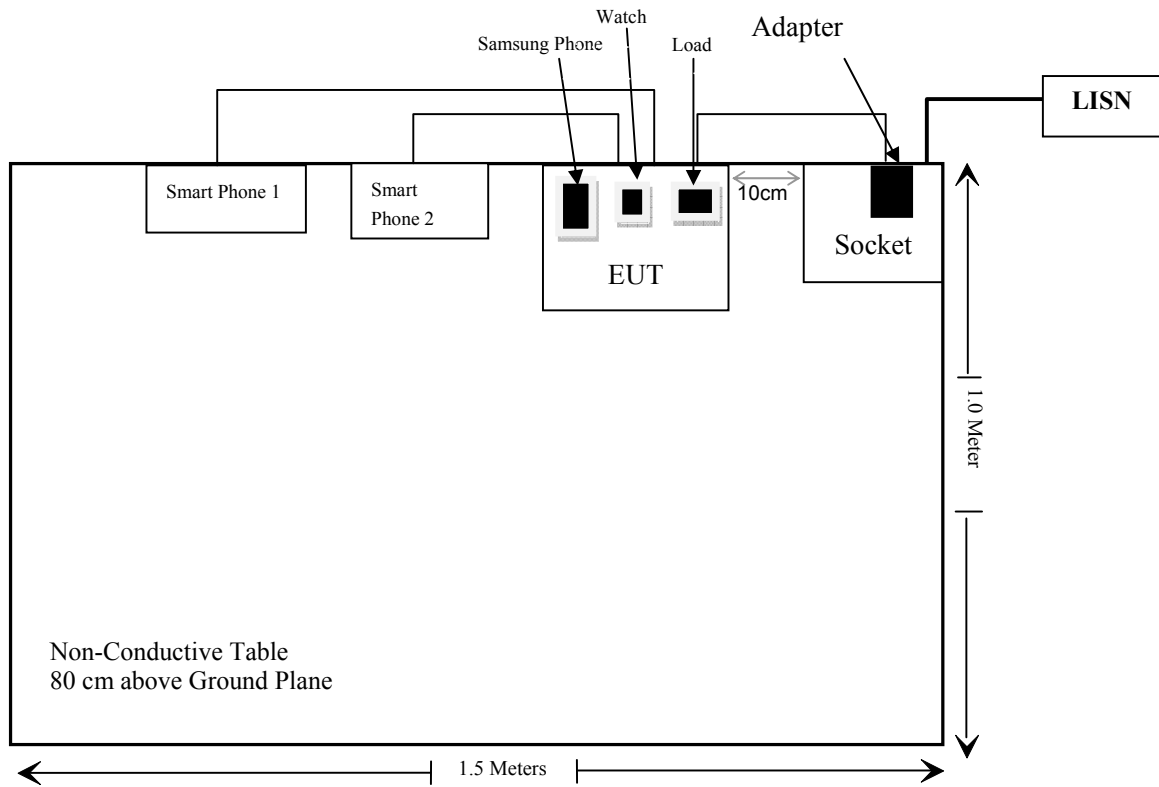
Manufacturer	Description	Model	Serial Number
Unknown	Load	Unknown	Unknown
Samsung	Smartphone	SM-N9500	R28JA0XPAYV
Apple	watch	A1859	FH7RN027HDNC
Wing Wah	Smart phone 1	iS1	Unknown
KRIPTO	Smart phone 2	K55h	Unknown

External I/O Cable

Cable Description	Length (m)	From Port	To
Un-shield Un-Detachable DC Power Cable	1.5	Adapter	EUT
Un-shield Detachable USB Cable	1.0	EUT	Smart phone 1
Un-shield Detachable USB Cable	1.4	EUT	Smart phone 2

Block Diagram of Test Setup

For conducted emission:



SUMMARY OF TEST RESULTS

FCC Rules	Description of Test	Result
FCC§1.1310 & §2.1091	Maximum Permissible Exposure(MPE)	Compliance
FCC§15.203	Antenna Requirement	Compliance
FCC§15.207	AC Line Conducted Emission	Compliance
§15.209 §15.205	Radiated Emission Test	Compliance

TEST EQUIPMENT LIST

Manufacturer	Description	Model	Serial Number	Calibration Date	Calibration Due Date
MPE					
Narda	Exposure Level Tester	ELT-400	N-0229	2019/11/15	2021/11/15
Narda	B Field Probe	ELT Probe 100cm ²	M-0666	2019/11/15	2021/11/15
ETS-Lindgreen	Isotropic Field Probe	HI—6005	69461	2018/9/28	2021/9/27
Conducted Emissions Test					
Rohde & Schwarz	EMI Test Receiver	ESCI	101120	2019/7/9	2020/7/8
Rohde & Schwarz	LISN	ENV216	101613	2020/1/22	2021/1/21
Rohde & Schwarz	Transient Limiter	ESH3Z2	DE25985	2019/11/29	2020/11/28
Unknown	CE Cable	CE Cable	UF A210B-1- 0720-504504	2019/11/29	2020/11/28
Rohde & Schwarz	CE Test software	EMC 32	V8.53.0	NCR	NCR
RF Radiated test					
R&S	EMI Test Receiver	ESR3	102455	2019/7/9	2020/7/8
Sonoma instrument	Pre-amplifier	310 N	186238	2019/4/20	2020/4/20
Sunol Sciences	Broadband Antenna	JB1	A040904-1	2017/12/22	2020/12/21
ETS	Passive Loop Antenna	6512	29604	2018/7/14	2021/7/13
Rohde & Schwarz	Auto test software	EMC 32	V9.10	NCR	NCR
Unknown	Cable	Chamber Cable 4	EC-007	2019/11/29	2020/11/28
Rohde & Schwarz	Auto test software	EMC 32	V9.10	NCR	NCR

* **Statement of Traceability:** Bay Area Compliance Laboratories Corp. (Shenzhen) attests that all calibrations have been performed in accordance to requirements that traceable to National Primary Standards and International System of Units (SI).

FCC §1.1310, §2.1091- MAXIMUM PERMISSIBLE EXPOSURE (MPE)

Applicable Standard

According to subpart §1.1310, systems operating under the provisions of this section shall be operated in a manner that ensures that the public is not exposed to radio frequency energy level in excess of the Commission's guidelines.

Limits for Maximum Permissible Exposure (MPE) (§1.1310, §2.1091)

(B) Limits for General Population/Uncontrolled Exposure				
Frequency Range (MHz)	Electric Field Strength (V/m)	Magnetic Field Strength (A/m)	Power Density (mW/cm²)	Averaging Time (minutes)
0.3–1.34	614	1.63	*(100)	30
1.34–30	824/f	2.19/f	*(180/f ²)	30
30–300	27.5	0.073	0.2	30
300–1500	/	/	f/1500	30
1500–100,000	/	/	1.0	30

f = frequency in MHz; * = Plane-wave equivalent power density;

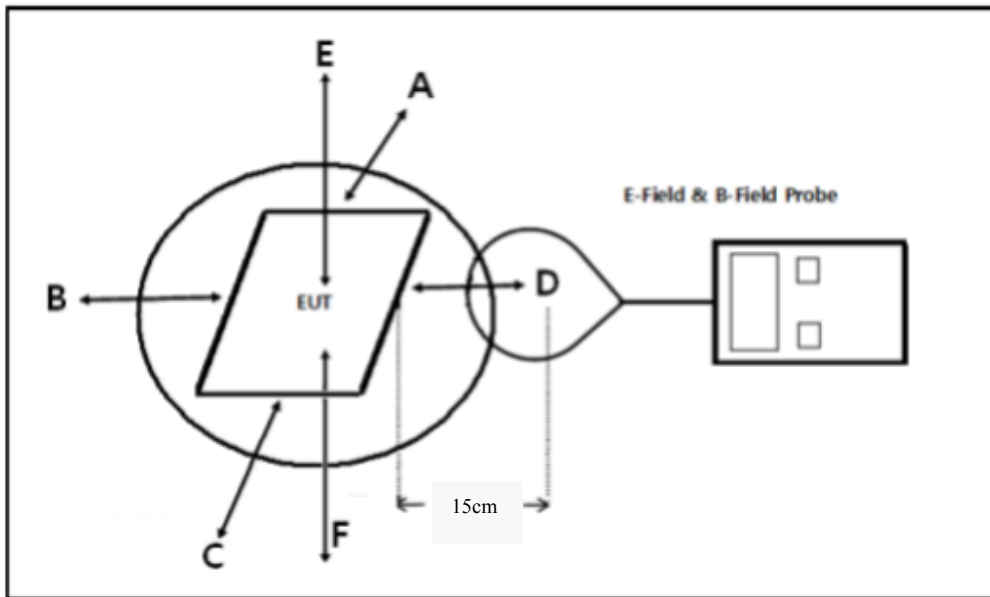
According with KDB 680106 D01 RF Exposure Wireless Charging Apps v03 clause 3 c)

- c) For devices designed for typical desktop applications, such as wireless charging pads, RF exposure evaluation should be conducted assuming a user separation distance of 15 cm. E and H field strength measurements or numerical modeling may be used to demonstrate compliance. Measurements should be made from all sides and the top of the primary/client pair, with the 15 cm measured from the center of the probe(s) to the edge of the device. Emissions between 100 kHz to 300 kHz should be assessed versus the limits at 300 kHz in Table 1 of Section 1.1310: 614 V/m and 1.63 A/m. A KDB inquiry is required to determine the applicable exposure limits below 100 kHz.

According to KDB 680106 D01 RF Exposure Wireless Charging App v03 clause 5 b)

- b) Inductive wireless power transfer applications with supporting field strength results and meeting all of the following requirements are not required to submit a KDB inquiry for devices approved using SDoC or a PAG for equipment approved using certification to address RF exposure compliance. However, the responsible party is required to keep a copy of the test report in accordance with KDB 865664 D02. A copy of the test report is to be submitted with the application if the device is approved using certification.
- (1) Power transfer frequency is less than 1 MHz.
 - (2) Output power from each primary coil is less than or equal to 15 watts.
 - (3) The transfer system includes only single primary and secondary coils. This includes charging systems that may have multiple primary coils and clients that are able to detect and allow coupling only between individual pairs of coils.
 - (4) Client device is placed directly in contact with the transmitter.
 - (5) Mobile exposure conditions only (portable exposure conditions are not covered by this exclusion).
 - (6) The aggregate H-field strengths at 15 cm surrounding the device and 20 cm above the top surface from all simultaneous transmitting coils are demonstrated to be less than 50% of the MPE limit.

Block Diagram of Test Setup



Note: 20 cm for Top test.

Test Data

Environmental Conditions

Temperature:	25°C
Relative Humidity:	65 %
ATM Pressure:	101.0 kPa

The testing was performed by Ricardo Lan on 2020-03-10.

Test mode: Transmitting & Charging (full load)

H-Filed Strength

Frequency Range (kHz)	Position A (A/m)	Position B (A/m)	Position C (A/m)	Position D (A/m)	Position E (A/m)	50% Limit (A/m)	Limit Test (A/m)
110-205	0.272	0.289	0.304	0.311	0.305	0.815	1.63

E-Filed Strength

Frequency Range (kHz)	Position A (V/m)	Position B (V/m)	Position C (V/m)	Position D (V/m)	Position E (V/m)	50% Limit (V/m)	Limit Test (V/m)
110-205	6.312	6.340	6.337	6.358	6.369	307	614

Note: Test with 15cm distance from the center of the probe(s) to the edge of the device, 20cm for the top test.

Result: Compliance

Considerations of compliance 680106 D01 RF Exposure Wireless Charging App v03 clause 5 b:

(1) Power transfer frequency is less than 1 MHz.

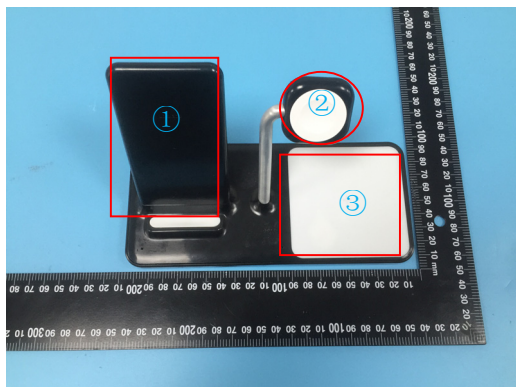
Yes, the operation frequency is 110-205 kHz.

(2) Output power from each primary coil is less than or equal to 15 watts.

Yes, the maximum output power of primary coil is 10 Watts, less than 15 watts.

(3) The transfer system includes only single primary and secondary coils. This includes charging systems that may have multiple primary coils and clients that are able to detect and allow coupling only between individual pairs of coils.

The transfer system includes four coils to detect and allow coupling only between individual pairs of coils.



- ① Wireless charging area which has two charging coils. One coil is working, the other one is stop.
- ② Wireless charging coil for Apple watch which include one coil.
- ③ Wireless charging area which has one charging coils

Note: The three wireless charging areas are independent. The coils and clients are able to detect and coupling only between individual pairs of coils.

(4) Client device is placed directly in contact with the transmitter.

Yes, client device is placed directly in contact with the transmitter

(5) Mobile exposure conditions only (portable exposure conditions are not covered by this exclusion).

Yes, mobile exposure conditions only

(6) The aggregate H-field strengths at 15 cm surrounding the device and 20 cm above the top surface from all simultaneous transmitting coils are demonstrated to be less than 50% of the MPE limit.

Yes, the test result for H and E-field strength less than 50% of the MPE limit.

FCC§15.203 – ANTENNA REQUIREMENT

Applicable Standard

An intentional radiator shall be designed to ensure that no antenna other than that furnished by the responsible party shall be used with the device. The use of a permanently attached antenna or of an antenna that uses a unique coupling to the intentional radiator shall be considered sufficient to comply with the provisions of this section.

Antenna Connected Construction

The EUT has four coils antenna arrangement, which was permanently attached, fulfill the requirement of this section. Please refer to the EUT photos.

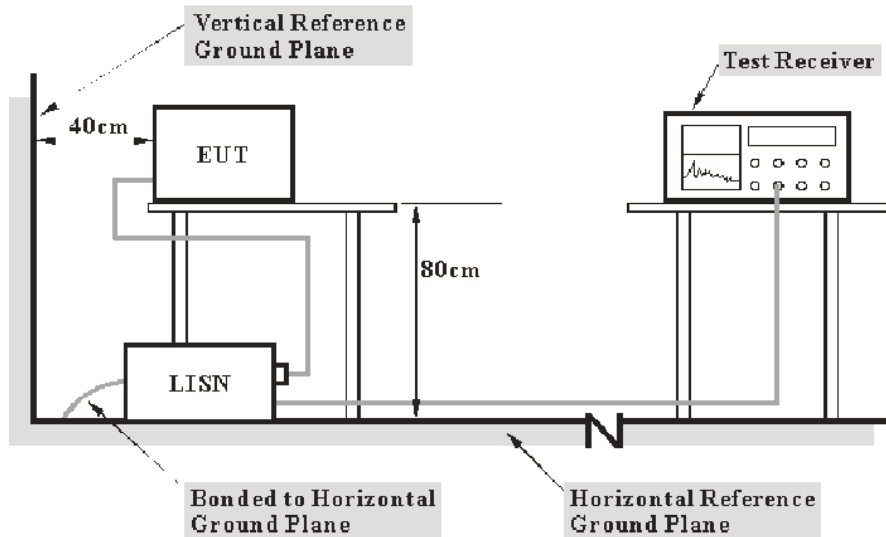
Result: Compliance.

FCC §15.207 – AC LINE CONDUCTED EMISSION

Applicable Standard

FCC§15.207

EUT Setup



- Note: 1. Support units were connected to second LISN.
 2. Both of LISNs (AMN) 80 cm from EUT and at the least 80 cm from other units and other metal planes support units.

The setup of EUT is according with per ANSI C63.10-2013 measurement procedure. The specification used was with the FCC Part 15.207 limits.

The spacing between the peripherals was 10 cm.

EMI Test Receiver Setup

The EMI test receiver was set to investigate the spectrum from 150 kHz to 30 MHz.

During the conducted emission test, the EMI test receiver was set with the following configurations:

Frequency Range	IF B/W
150 kHz – 30 MHz	9 kHz

Test Procedure

During the conducted emission test, the adapter was connected to the outlet of the LISN.

Maximizing procedure was performed on the six (6) highest emissions of the EUT.

All final data was recorded in the Quasi-peak and average detection mode.

Corrected Factor & Margin Calculation

The Corrected factor is calculated by adding LISN VDF (Voltage Division Factor), Cable Loss and Transient Limiter Attenuation. The basic equation is as follows:

$$\text{Correction Factor} = \text{LISN VDF} + \text{Cable Loss} + \text{Transient Limiter Attenuation}$$

The “**Margin**” column of the following data tables indicates the degree of compliance with the applicable limit. For example, a margin of 7 dB means the emission is 7 dB below the limit. The equation for margin calculation is as follows:

$$\text{Margin} = \text{Limit} - \text{Corrected Amplitude}$$

Test Results Summary

According to the recorded data in following table, the EUT complied with the FCC Part 15.207.

Test Data

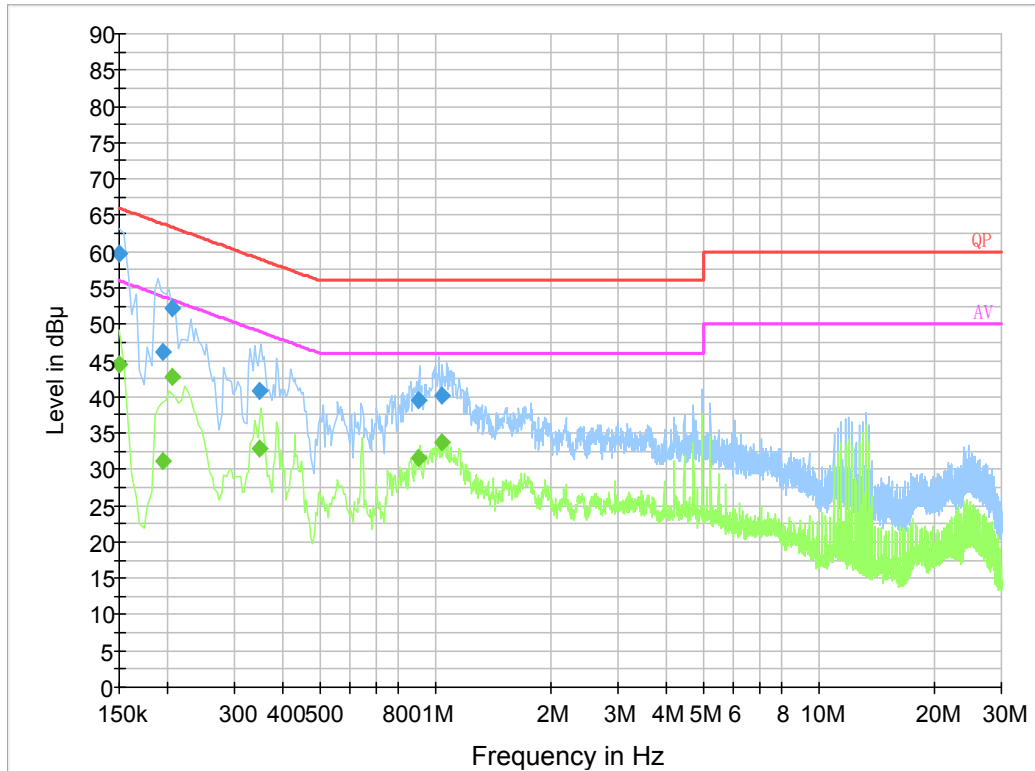
Environmental Conditions

Temperature:	25°C
Relative Humidity:	65 %
ATM Pressure:	101.0 kPa

The testing was performed by Haiguo Li on 2020-03-09.

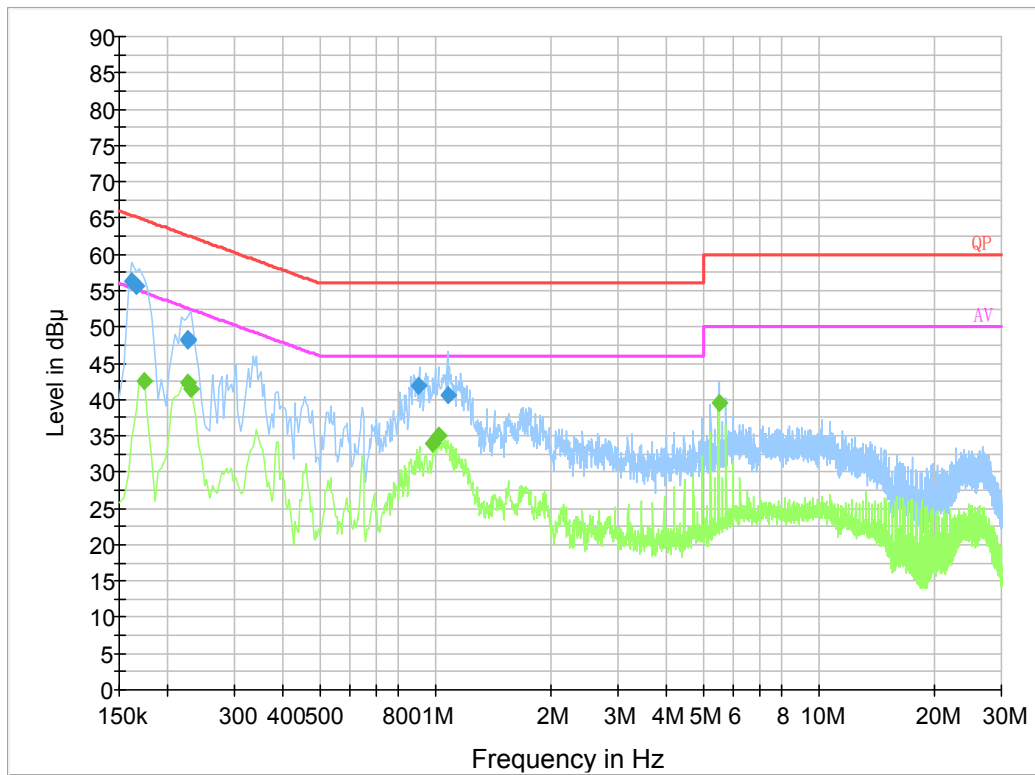
Test Mode: Transmitting & Charging (Full load)

AC 120 V/60 Hz, Line:



Frequency (MHz)	Corrected Amplitude (dBμV)	Correction Factor (dB)	Limit (dBμV)	Margin (dB)	Detector (PK/Ave./QP)
0.150000	59.7	19.8	66.0	6.3	QP
0.194500	46.2	19.8	63.8	17.6	QP
0.205500	52.2	19.8	63.4	11.2	QP
0.348750	40.8	19.9	59.0	18.2	QP
0.908350	39.5	19.8	56.0	16.5	QP
1.038610	40.2	19.9	56.0	15.8	QP
0.150000	44.5	19.8	56.0	11.5	Ave.
0.194500	31.1	19.8	53.8	22.7	Ave.
0.205500	42.8	19.8	53.4	10.6	Ave.
0.348750	32.9	19.9	49.0	16.1	Ave.
0.908350	31.6	19.8	46.0	14.4	Ave.
1.038610	33.7	19.9	46.0	12.3	Ave.

AC 120V/ 60 Hz, Neutral:



Frequency (MHz)	Corrected Amplitude (dBμV)	Correction Factor (dB)	Limit (dBμV)	Margin (dB)	Detector (PK/Ave./QP)
0.161500	56.3	19.8	65.4	9.1	QP
0.165500	55.6	19.8	65.2	9.6	QP
0.225500	48.3	19.8	62.6	14.3	QP
0.225500	48.1	19.8	62.6	14.5	QP
0.908350	41.9	19.7	56.0	14.1	QP
1.077830	40.7	19.8	56.0	15.3	QP
0.174000	42.4	19.8	54.8	12.4	Ave.
0.226000	42.4	19.8	52.6	10.2	Ave.
0.230000	41.5	19.8	52.4	10.9	Ave.
0.986000	33.9	19.8	46.0	12.1	Ave.
1.022000	35.1	19.8	46.0	10.9	Ave.
5.486000	39.4	19.9	50.0	10.6	Ave.

Note:

- 1) Correction Factor = LISN VDF (Voltage Division Factor) + Cable Loss + Transient Limiter Attenuation
- 2) Corrected Amplitude = Reading + Correction Factor
- 3) Margin = Limit – Corrected Amplitude

FCC §15.205 & §15.209 - RADIATED EMISSIONS TEST

Applicable Standard

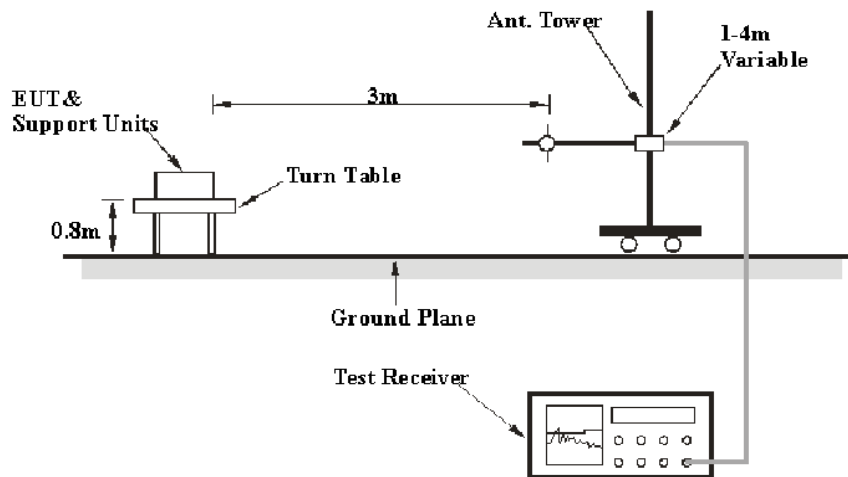
As per FCC Part 15.209

(a) Except as provided elsewhere in this subpart, the emissions from an intentional radiator shall not exceed the field strength levels specified in the following table:

Frequency (MHz)	Field strength (microvolts/meter)	Measurement distance (meters)
0.009-0.490	2400/F(kHz)	300
0.490-1.705	24000/F(kHz)	30
1.705-30.0	30	30
30-88	100**	3
88-216	150**	3
216-960	200**	3
Above 960	500	3

**Except as provided in paragraph (g), fundamental emissions from intentional radiators operating under this section shall not be located in the frequency bands 54-72 MHz, 76-88 MHz, 174-216 MHz or 470-806 MHz. However, operation within these frequency bands is permitted under other sections of this part, e.g., §§15.231 and 15.241.

EUT Setup



The radiated emission tests were performed in the 3-meter chamber test site, using the setup accordance with the ANSI C63.10-2013. The specification used was the FCC Part Subpart C limits.

The spacing between the peripherals was 10 cm.

EMI Test Receiver Setup

The system was investigated from 9 kHz to 1 GHz.

During the radiated emission test, the EMI test Receiver was set with the following configurations:

Frequency Range	RBW	Video B/W	Measurement
9 kHz – 150 kHz	200 Hz	1 kHz	QP/Average
150 kHz – 30 MHz	9 kHz	30 kHz	QP/Average
30 MHz – 1000 MHz	120 kHz	300 kHz	QP

The emission limits shown in the above table are based on measurements employing a CISPR quasi-peak detector except for the frequency bands 9-90 kHz, 110-490 kHz and above 1000 MHz. Radiated emission limits in these three bands are based on measurements employing an average detector.

If the maximized peak measured value complies with the limit, then it is unnecessary to perform an QP/Average measurement

Corrected Amplitude & Margin Calculation

The Corrected Amplitude is calculated by adding the Antenna Factor and Cable Loss, and subtracting the Amplifier Gain from the Amplitude reading. The basic equation is as follows:

$$\text{Corr. Ampl.} = \text{Meter Reading} + \text{Antenna Factor} + \text{Cable Loss} - \text{Amplifier Gain}$$

The “**Margin**” column of the following data tables indicates the degree of compliance with the applicable limit. For example, a margin of 7dB means the emission is 7dB below the limit. The equation for margin calculation is as follows:

$$\text{Margin} = \text{Limit} - \text{Corr. Ampl.}$$

Test Results Summary

According to the data in the following table, the EUT complied with the FCC Part 15.209&15.205.

Test Data

Environmental Conditions

Temperature:	21 °C
Relative Humidity:	56 %
ATM Pressure:	101.0 kPa

The testing was performed by Holland Yang on 2020-03-09 & 2020-03-12.

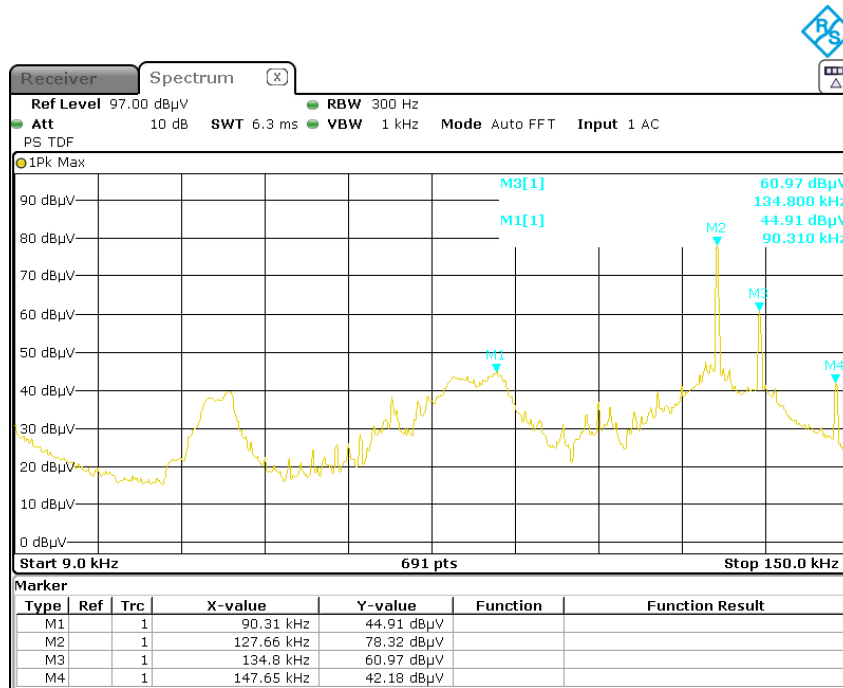
Test mode: Transmitting & Charging (full load)

1) 9 kHz~30MHz:

Frequency (MHz)	Corrected Amplitude (dB μ V/m)	Detector (PK/QP/AV)	Turntable Degree	Rx Antenna Height (m)	Corrected Factor (dB/m)	FCC 15.205&15.209		Remark
						Limit (dB μ V/m)	Margin (dB)	
0.09031	44.91	PK	46	1	66.4	108.49	63.58	Spurious emission
0.388	51.75	PK	73	1	53.2	95.83	44.08	
27.905	52.05	PK	65	1	30.4	69.54	17.49	
0.12766	78.32	PK	18	1	65.6	105.48	27.16	Fundamental

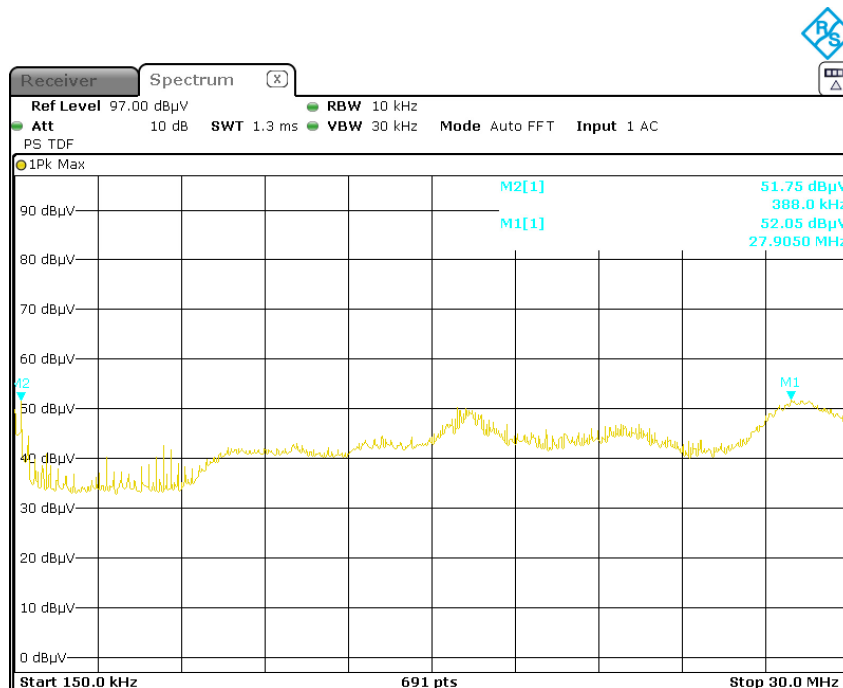
Note: PK detector data compliance with average detector limit.

9 kHz-150 kHz



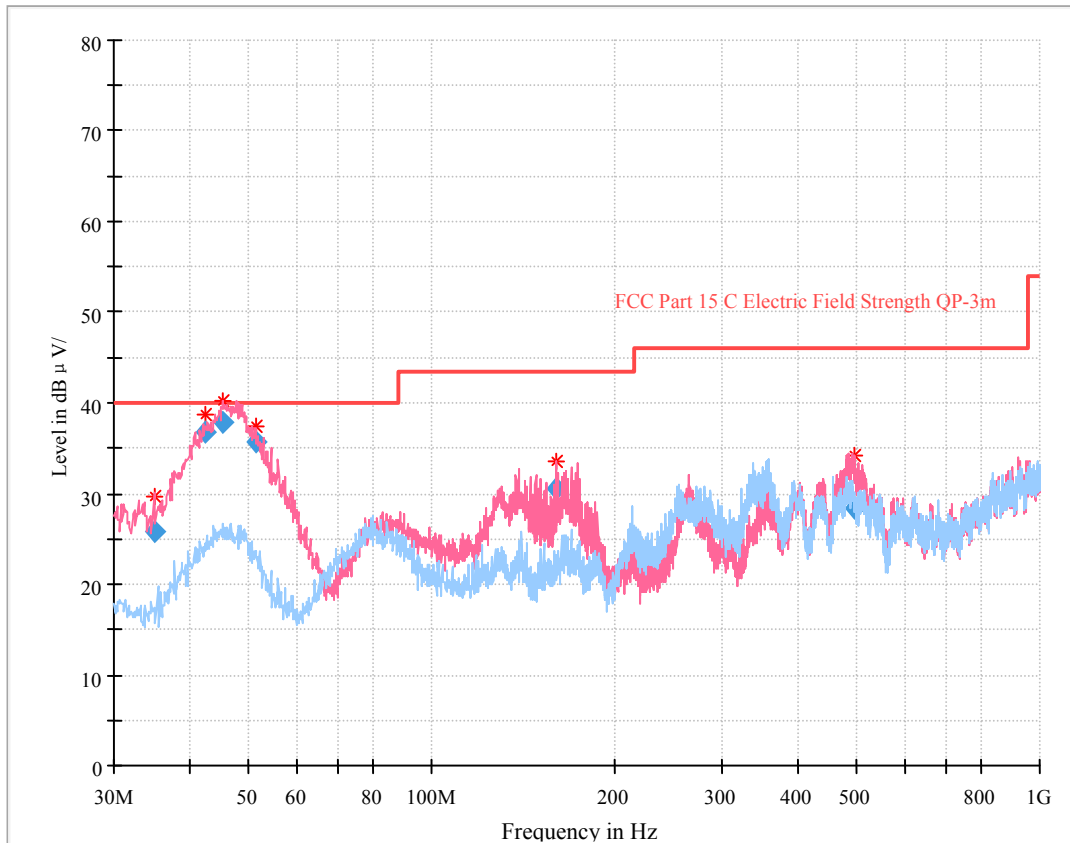
Date: 12.MAR.2020 11:02:25

150 kHz-30 MHz



Date: 12.MAR.2020 11:05:52

2) 30 MHz ~ 1GHz



Frequency (MHz)	Corrected Amplitude (dBμV/m)	Antenna height (cm)	Antenna Polarity	Turntable position (degree)	Correction Factor (dB/m)	Limit (dBμV/m)	Margin (dB)
35.016625	25.70	109.0	V	194.0	-10.5	40.00	14.30
42.438875	36.78	108.0	V	340.0	-15.5	40.00	3.22
45.397500	37.95	103.0	V	0.0	-17.4	40.00	2.05
51.330625	35.65	109.0	V	0.0	-19.7	40.00	4.35
160.478250	30.52	103.0	V	76.0	-14.5	43.50	12.98
495.669125	28.47	113.0	V	147.0	-5.4	46.00	17.53

Note:

Corrected Amplitude = Corrected Factor + Reading

Corrected Factor=Antenna factor (RX) + cable loss - amplifier factor

Margin = Limit- Corr. Amplitude

Result: Compliance

***** END OF REPORT *****