

Document ID	https://docs.google.com/document/d/1aJesi7uKgnxEsl7qL0W4hG_PUC_aA1mYrybjBrtfYGI/edit
Responsible	Maaike Taklo
Classification	Confidential



Revision History Table		
Named revision	Date	Comment:
01	2020-02-17	First version shared with UL
02	2020-04-24	Update for new product label

7) External Photos

Product: Sensor US with Range Extender



Figure 1: Top: Image of front side of **PN 100644** Sensor US with Range Extender, fully assembled by end user. Bottom: PN 100644 Sensor Range Extender PCB (EU & US) (left) and Sensor US with FCC ID: 2ATFX-100541 (right) as shipped to customers, not assembled.

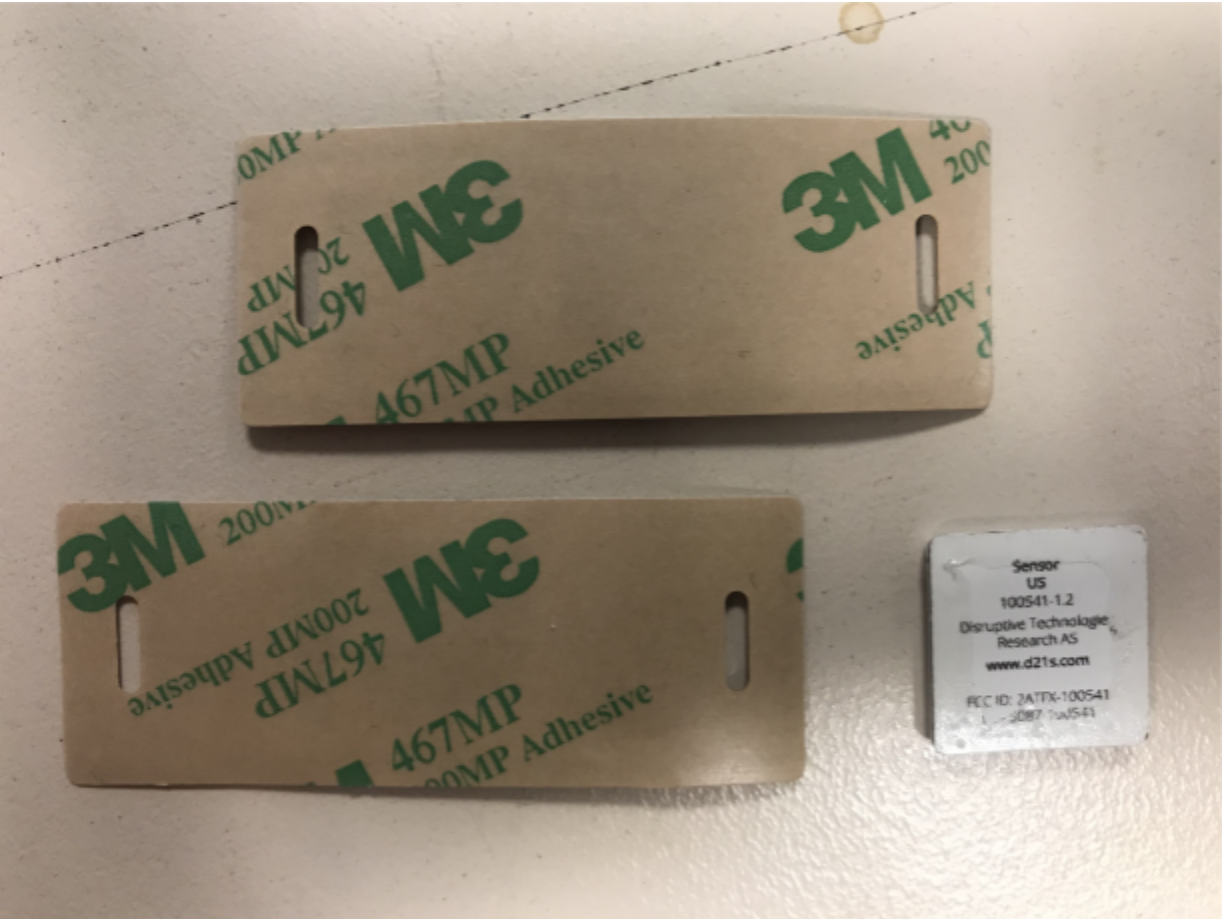


Figure 2: Top: Image of back side of PN 100644 Sensor US with Range Extender, fully assembled by end user. Bottom: PN 100644 Sensor Range Extender PCB (EU & US) (left) and Sensor US with FCC ID: 2ATFX-100541 (right) as shipped to customers, not assembled, both parts flipped to show the backside of each part.