

F-C10 平板电脑说明书

尺寸: 100*140mm

封面200g铜版纸彩色印刷,过哑膜

内页80g书纸彩色印刷

F-C10 TABLET

User Manual



Please read this instruction thoroughly before using this product and keep it for future reference.



FANGOR

CONTENTS

READ BEFORE USE	01
TABLET OVERVIEW	02
GETTING STARTED	03
HOME SCREEN	05
SETTING BASICS	07
NETWORK CONNECTION	11
APP MANAGEMENT	12
INTERNET NAVIGATION	12
MULTIMEDIA	13
TECHNICAL SPECIFICATION	15
TROUBLESHOOTING	16
FCC WARNING STATEMENT	17
WARRANTY INFORMATION	18

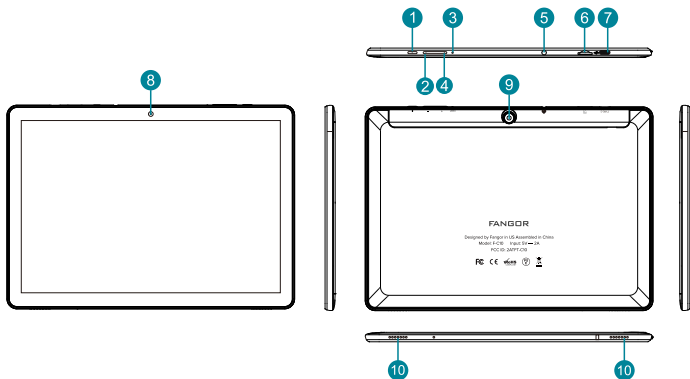
READ BEFORE USE

Your tablet is manufactured and designed for mobile use. As the tablet software is updated regularly, this User Manual may not cover all aspects of new features.

Please read the following instructions carefully:

1. Do not place objects on top of the tablet, as objects may scratch the screen.
 2. Protect the device from moisture, dust or smoky environments, as these may harm the tablet. The tablet is not resistant to water or moisture. Avoid using the tablet in a humid environment. Do not expose the device to direct sunlight or heat sources.
 3. Do not place the tablet on uneven or unstable surfaces.
 4. Avoid using this device in strong magnetic and static environments as much as possible.
 5. Do not drop the tablet or impact it against a hard surface. Dropping the tablet can damage the LCD screen, which is not covered by warranty.
 6. Operating Temperature: This tablet should only be used in environments with ambient temperatures between 32°F (0°C) and 113°F (45°C).
 7. Do not force or attempt to insert items with different ports/plugs into the tablet.
 8. Do not use your tablet while driving.
 9. Use only manufacturer approved chargers.
 10. The device and adapter may produce some heat during normal operation or charging. Avoid placing them on soft surfaces or other locations/ conditions that may prevent normal dispersion of heat, which can cause device overheating. To prevent discomfort or injury from heat exposure, do not leave the tablet on your lap or other parts of the body.
 11. Once charged, disconnect the tablet from the outlet.
 12. Do not use a pen or any sharp object to tap the screen.
 13. Clean only with a dry and soft cloth.
 14. Do not disassemble the tablet. Refer to a certified service technician for repairs.
 15. Do not disconnect the tablet during formatting, uploading or downloading.
- Turn off the tablet when installing or removing external devices.

TABLET OVERVIEW



1. Power On/Off
2. VOL-
3. Reset
4. VOL+
5. Headphone Jack

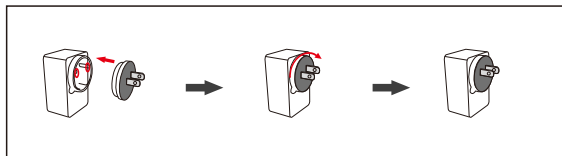
6. Micro SD Card Slot
7. TYPE-C Port
8. Front Camera
9. Back Camera
10. Speaker

GETTING STARTED

Connecting Power Supply

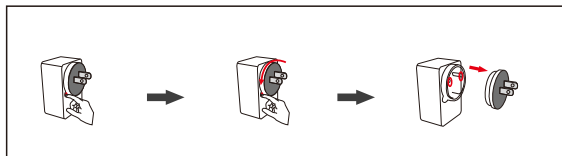
AC Adapter Installation Instruction

1. Choose one types of plug that you need (UL Plug, EU Plug, UK Plug)
2. Aim the hole of the charging head at the charging base pin.
3. Turn the charging head to the right with a little bit of force to lock.



AC Adapter Remove Instruction

1. Press it with a little force.
2. Turn the charging head to the left with a little bit of force to open.
3. Disassemble display drawing.



Charging

Fully charge your tablet for at least six hours before initial use. The battery icon at the upper right corner of the screen indicates the battery level or charging status.

Power On/Off

1. Press and hold the power button for 2~3s to turn on your tablet.
2. Press and hold the power button for 2s, then release it. It will show Power off, Restart on the Screen. Tap Power off to turn off the tablet.
3. Press the **Reset button** with a PIN to reboot the tablet when it's frozen.

Unlocking the Screen

press the power button, and then slide the lock icon to unlock your screen.



Sleep Mode

Simply press the power button once to switch the tablet to the Sleep Mode when the tablet is ON, press again to wake it up.

Tip:

Go to **Settings > Display > Advanced > Screen timeout** to set the time of entering the Sleep Mode.

Screenshot

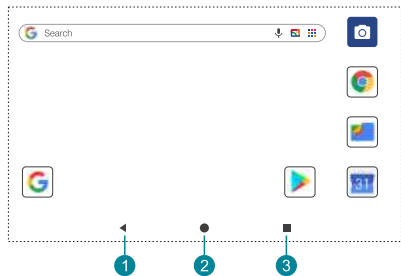
1. Press the Volume- button and the Power On/Off button for 2 seconds to capture a picture.
2. Press  icon on the home screen, there is a screenshot icon  at the bottom of the application. Tap Screenshot to capture a screenshot, then you can share or edit.

Battery

1. A rechargeable Li-ion battery is installed in the tablet.
2. **DO NOT** attempt to replace the tablet battery by yourself because you may damage the battery, which might cause overheating, fire or injury.
3. **DO NOT** dispose of tablet in a fire.
4. **DO NOT** expose the tablet battery to any heat source, direct sunlight or high temperature.
5. Only use the **ORIGINAL** power adapter provided by us to charge the tablet battery.
6. We suggest you drain the battery completely once a month if only use your tablet occasionally.
7. The Li-ion battery in your tablet should be serviced or recycled by an authorized service provider, and must be recycled or disposed of separately from household waste.
8. Dispose of battery according to your local environmental laws and regulations.

HOME SCREEN

Icons on the Bottom Menu



1. Back
2. Home Screen
3. Recent Activities

Wallpapers

Tap and hold the empty section of a Home Screen, Home Settings and Wallpapers will be displayed. Tap Wallpapers to change the current wallpaper of the tablet from the default.

Adding App Icons to the Home Screen

Within the Apps menu, choose an app. Tap and hold the desired app for about two seconds, until the home screen appears. Slide it wherever you wish to place it and let go.

Removing App Icons from the Home Screen

Tap and hold the icon you wish to remove to display the Remove option at the top of the home screen. Drag the icon to remove it from the home screen.

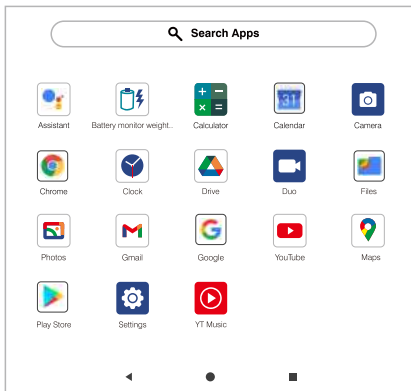
Notifications Panel

Open the notifications panel to view all new notifications and information.

1. To open the notifications panel, swipe your finger down from the top of the screen.
2. To close the notifications panel, drag the panel up.
3. To dismiss the notification, swipe it left or right.

Menu List

On the home screen, swipe your finger from the bottom to the top to open the menu list. This menu may have multiple panels.

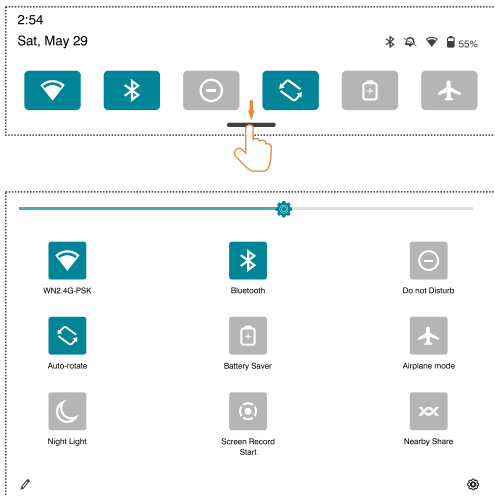


To view other panels, swipe up or down. Tap or to return to the home screen.

SETTING BASICS

Quick Settings

Swipe down from the top of the screen to access Quick Settings.



Wi-Fi: Tap to connect/disconnect to a wireless network.

Bluetooth: Enable/disable the Bluetooth of the tablet.

Do not disturb: Mute sound and stop vibration after enabling this function.

Auto-rotate: Turn on/off the Auto-rotate of the screen.

Battery Saver: Tap to choose the power setting you prefer to save the battery time.

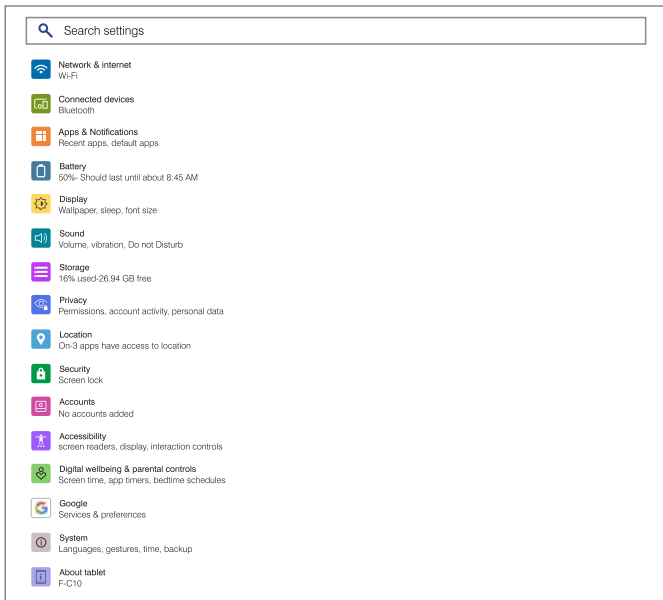
Airplane mode: Turn on/off all the network connectivity.

Night Light: The blue light will be filtered out and the screen will take on a tint of yellow after enabling this option.

Screen Recording Start: While recording, Android System can capture information that's visible on your screen or played on your device.

Nearby Share: Enable/disable location access.

More Settings



Network & internet

- Connect to any working Wi-Fi
- Enable/disable the Airplane Mode
- Select Private DNS Mode

Connected devices

- Pair with Bluetooth devices and check the paired devices
- Turn on/off Bluetooth
- Cast the screen to the paired devices
- Add and check printers
- Check the received files from other devices via Bluetooth connection and more
- Share files with nearby devices

Apps & notifications

- Check the Apps recently opened
- Check all the Apps on the tablet
- Check the screen time for Apps
- Adjust App notification settings
- Set the App permissions
- Uninstall the third-party Apps
- Clear the cache of the Apps and more

Battery

- Display the remaining battery power as a percentage
- Enable/disable Battery percentage and Battery Manager
- Set Power saving optimization
- Manage the battery optimization for apps
- Check the detailed battery settings for Apps

Display

- Adjust the screen brightness level
- Turn on the Dark theme
- Turn on the night light
- Adaptive brightness
- Change the wallpaper
- Adjust the screen timeout
- Adjust the font size and display size
- Set a screen saver and more
- Lock screen
- Turn on the Color Enhance
- Turn on the Smart backlight
- Turn on the Reading Mode
- Adjust the Color Temperature

Sound

- Set the volumes for ring, notification, media and alarm
- Manage do not disturb
- Set sound and vibrations

Storage

- View and manage your storage space

Privacy

- Manage your personal data
- Manage notifications on the lock screen
- Set to show/hide the password when inputting a password
- Saved passwords, credit cards and addresses

Location

- Turn on/off the location services for specific Apps.

Security

- Set screen lock e.g. Pattern Password, PIN, Swipe or none.

Accounts

- Add and manage the user accounts on your tablet.

Accessibility

- For vision and hearing impaired users, manage settings for Screen readers, Display and more

Digital Wellbeing & parental controls


- Check your app usage based on Screen time, Notifications received ,or Times opened from Dashboard
- Set a schedule for Wind Down and switch on the setting you prefer
- Manage the related notification settings to reduce interruptions
- Set up Parental controls to help your kids balance their screen time

Google

- Set the preferences for Google related services.

System

- Check the detailed information about the tablet
- Set Language

Tap **Languages & input > Languages > +Add a language** to add your language.
After adding, hold and slide  to the top to change the language.

- Turn on/off the quick access to the camera
- Set the date and time
- Turn on/off the Back up to Google Drive
- Restore factory setting

Tap **Advanced > Reset options > Erase all data** (factory reset) to restore the factory setting

About Tablet

- View the device information

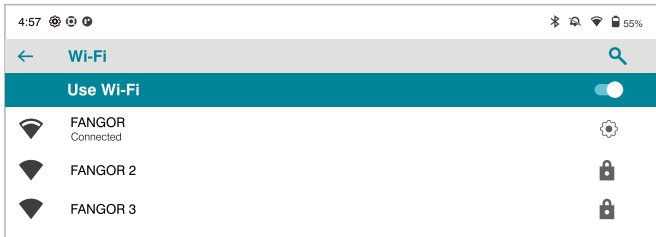
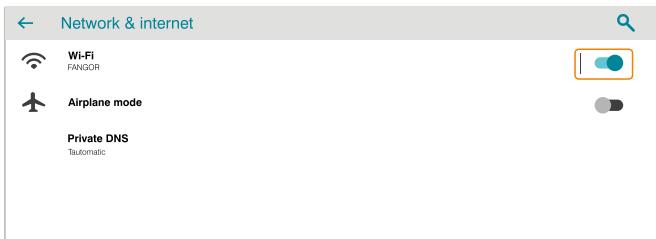
NETWORK CONNECTION

Wi-Fi Connection


Launch the App Settings or long press the **Wi-Fi** in Quick Settings.

1. Tap **Network & internet** and turn on the **Wi-Fi**. All the **Wi-Fi** connections will be listed.
2. Select your **Wi-Fi** and input the correct password. When connected, the wireless indicator appears in the status bar. The white lines indicate connection strength.

Note: If you select a secured network, you will be asked to enter the network key or password. The next time your tablet connects to a previously accessed wireless network, you will not be asked to enter the key or other security information again.



Forgetting a Wi-Fi® Network

If you do not want your tablet to automatically connect to a network, you may **FORGET** it. On the home screen or menu list, tap , and then tap **Wi-Fi®**.

Select the network name. A dialog will appear in which you can tap **FORGET**.

Bluetooth® Pairing

Please turn on the Bluetooth on your Bluetooth device firstly.

1. Go to **Connected devices**> **Connection preferences**> **Bluetooth** to turn on the Bluetooth on your tablet.
2. Tap **+Pair new device** to enter the scanning interface. Devices available will be displayed after a few seconds.
3. Tap the desired device to get a pairing code and click **PAIR** on both devices. The automatic connection is applied to some devices.

APP MANAGEMENT

App Download and Installation


1. Tap and open Play Store on the Home Screen.
2. Log into your Google Account, then search and download the app you need.

App Management

Move the App

Tap and hold the App, then slide it to a desired screen.

Uninstall the App

Touch and hold the App, then press for second seconds, Tap App info, then slide it to the Uninstall  to uninstall the App.

Note: The default apps of the F-C10 tablets cannot be uninstalled.

Clear the Cache of the APP

Touch and hold the App, then press for second seconds, Tap App info, select **Storage & cache** > **CLEAR CACHE** to clear the cache.

INTERNET NAVIGATION

Please make sure the tablet is connected to a working Wi-Fi network before navigating the Internet.

You may use the pre-installed Chrome browser or use another browser downloaded on Google Play

MULTIMEDIA

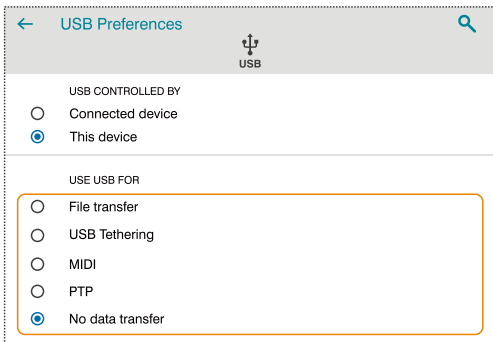
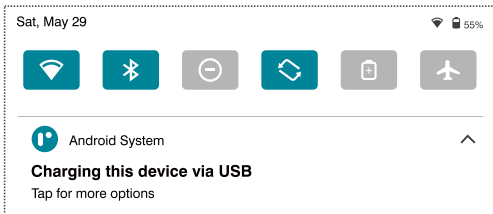
Connecting to a Computer

1. Connect your tablet to the computer with a Type-C cable.
2. **Media device (MTP)** is the default setting. Go to your computer and find your tablet F-C10 to transfer files between your tablet and computer.

Tips:

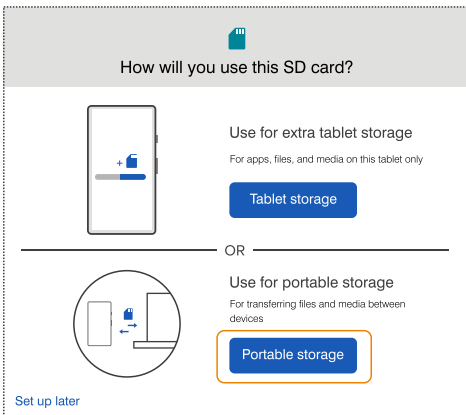
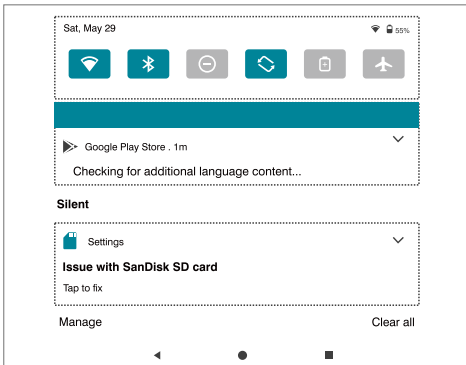
Go to **Quick Settings**, tap **Android System · Charging this device via USB**> **Tap for more options**> **USB Preferences** to select the option preferred.

1. Select **File Transfer** to transfer data between the devices.
2. Select **USB tethering** to share the connected network to the computer.
3. Select **MIDI** to play MIDI instruments between the devices.
4. Select **Camera (PTP)** to transfer photos between the devices.
5. Select **No data transfer** to only charge the tablet.



Connecting to an External Device

1. Install a memory card with the capacity up to 128G and go to **Quick Settings**.
2. Tap **SET UP**.
3. Set the memory card as a portable storage by selecting **Portable storage**.
Enter memory card storage to move files between the card and tablet.



TECHNICAL SPECIFICATION

CPU	Octa-Core A55 1.6Ghz
GPU	IMG GE8322
Operating System	Android™ 11
Storage	32 GB
Display	10.1" 1200*1920 IPS
TP	G+P
Buttons	Power, Volume+, Volume-, Reset (Hidden)
Communication Module	Built-in communication is not supported. External USB 3G Dongle / 4G Dongle
Camera	Front-facing camera: 5.0M Rear-facing camera: 13.0M
Wi-Fi	802.11 b/g/n + BT5.0
Battery	8000mAh
Ports	One Type-C USB 2.0 OTG is supported
	Expanded memory SD card (Hot swapping supported)
	One 3.5mm standard stereo earphone
Speaker	Dual speaker, 8Ω/1W
MIC	Built-in MIC
Power Supply	DC 5V / 2A

TROUBLESHOOTING

Problem	Available Solution
The Tablet doesn't power on.	<ol style="list-style-type: none"> 1. Reboot your tablet after charging it for more than 30 minutes. 2. Shortly press power button to check if the tablet is in Sleep Mode. 3. Press the power button for 20 seconds. 4. Press the Reset button with a PIN to reboot the tablet. 5. Please contact us by our after-sale email at: us-tablet-c10@eitack.com
The Tablet cannot be charged	<ol style="list-style-type: none"> 1. Charge your tablet for 30 minutes, if it was completely drained. 2. Check and make sure the charger is properly inserted into charging port. 3. Try another compatible USB cable and adapter. Please contact us at us-tablet-c10@eitack.com
Error message occur during the operation.	<ol style="list-style-type: none"> 1. Uninstall the App with error message, then download and install again. 2. Delete and clear the system to factory mode by system reset.
The Tablet cannot be detected by the.	<ol style="list-style-type: none"> 1. Make sure your tablet is in power on. 2. Try another TYPE-C cable. 3. Connect your tablet to a different port on your PC.
The Tablet cannot be connected with Wi-Fi.	<ol style="list-style-type: none"> 1. Make sure the Wi-Fi in your tablet is ON. 2. Unplug Wi-Fi router, wait for 2 minutes and plug to connect again. 3. Make sure you input correct password when connect the Wi-Fi . 4. Check and make sure there is no filtering setting or device connection limit in your router setting. 5. Forget original Wi-Fi connection, reset Wi-Fi router, and connect again.
The Storage not enough.	<ol style="list-style-type: none"> 1. Delete Apps not used very often to spare some space. 2. Clean the cache of the Apps regularly. 3. Get an extended memory card to expend storage.

FCC WARNING STATEMENT

FCC Statement

This device complies with part 15 of the FCC rules. Operation is subject to the following two conditions:

- (1) This device may not cause harmful interference.
- (2) This device must accept any interference received, including interference that may cause undesired operation.
- (3) The manufacturer is not responsible for any radio or tv interference caused by unauthorized modifications or change to this equipment. Such modifications or change could void the user's authority to operate the equipment.

NOTE:

This equipment has been tested and found to comply with the limits for a Class B digital device, pursuant to part 15 of the FCC Rules. These limits are designed to provide reasonable protection against harmful interference in a residential installation.

This equipment generates, uses and can radiate radio frequency energy and, if not installed and used in accordance with the instructions, may cause harmful interference to radio communications. However, there is no guarantee that interference will not occur in a particular installation. If this equipment does cause harmful interference to radio or television reception, which can be determined by turning the equipment off and on, the user is encouraged to try to correct the interference by one or more of the following measures:

- Reorient or relocate the receiving antenna.
- Increase the separation between the equipment and receiver. Connect the equipment into an outlet on a circuit different from that to which the receiver is connected.
- Consult the dealer or an experienced radio/TV technician for help.

Warning:

The device has been evaluated to meet general RF exposure requirement.
The device can be used in portable exposure condition without restriction.

FCC ID: 2ATFT-C10

WARRANTY INFORMATION

We provide 12 months warranty

This warranty is void if the Company deems, in its discretion, that the Product may have been damaged through modification, improper use, and user negligence, water damage or tampering of the barcode of the Product. This warranty is a limited warranty for repair/ replacement of the Product, subject to the conditions set forth herein.

The Company is not liable for consequential, indirect, incidental, special or punitive damages and the Company's total liability hereunder shall not exceed an amount greater than the retail purchase price of the product.

For any problem with FANGOR Store products, Please feel free to contact us, we will respond within 24 hours and offer solutions or a direct replacement or refund without delay.

E-mail address: **us-tablet-c10@eitack.com**

Google, Android, Google Play, YouTube and other marks are trademarks of Google LLC.



FANGOR

FANGOR

F-C10 Tablet / User Manual

Federal Communications Commission (FCC) Statement. This device complies with part 15 of the FCC Rules. Operation is subject to the following two conditions:

- (1) This device may not cause harmful interference, and
- (2) this device must accept any interference received,

including interference that may cause undesired operation. Note: This equipment has been tested and found to comply with the limits for a Class B digital device, pursuant to part 15 of the FCC Rules. These limits are designed to provide Reasonable protection against harmful interference in a residential installation. This equipment generates, uses and can radiate radio frequency energy and, if not installed and used in accordance with the instructions, may cause harmful interference to radio communications. However, there is no guarantee that interference will not occur in a particular installation. If this equipment does cause harmful interference to radio or television reception, which can be determined by turning the equipment off and on, the user is encouraged to try to correct the interference by one or more of the following measures:

- Reorient or relocate the receiving antenna.
- Increase the separation between the equipment and receiver.
- Connect the equipment into an outlet on a circuit different from that to which the receiver is connected.
- Consult the dealer or an experienced radio/TV technician for help.

Warning: Changes or modifications made to this device not expressly approved by **Shenzhen Kejinming Electronic Co., Ltd** may void the FCC authorization to operate this device. Note: The manufacturer is not responsible for any radio or TV interference caused by unauthorized modifications to this equipment. Such modifications could void the user's authority to operate the equipment.

RF exposure statement:

The device complies with the FCC RF exposure requirement and can be installed and used without restriction.