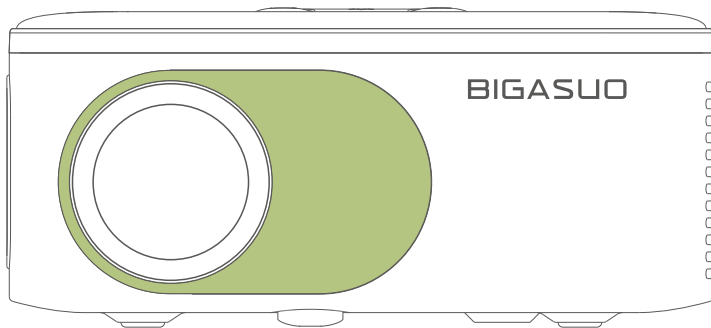


BIGASUO

HOME THEATER PROJECTOR B-110 USER MANUAL



Content

INSTRUCTIONS	01
FCC CAUTION	01
PACKAGING LIST	02
NOTICE	02
FUNCTION OVERVIEW	03
QUICKLY START	04
PROJECTION DISTANCE & SIZE	05
SOURCE	06
MEDIA PLAYER SETTING	07
BLUETOOTH SETTING	09
SPECIFICATIONS	10
FAQ	11
WARRANTY	12

INSTRUCTIONS

1. Please use the included AC power cable to power the machine. Only use the included accessories specified by the manufacturer.
2. It is normal for the machine to generate heat during operation. To prevent overheating, do not block the ventilation openings.
3. To reduce the risk of fire or electric shock, do not expose the device to rain or moisture. Objects filled with liquids, such as vases, should not be placed on these devices, as it may lead to potential accidents that damage the device.
4. Avoid any type of impact, as it may damage the internal components.
5. Do not make any repairs to this device by yourself. Our company will not cover the warranty if self-repair efforts were undertaken.



FCC CAUTION

Any Changes or modifications not expressly approved by the party responsible for compliance could void the user's authority to operate the equipment. This device complies with part 15 of the FCC Rules. Operation is subject to the following two conditions:

(1) This device may not cause harmful interference, and (2) this device must accept any interference received, including interference that may cause undesired operation.

Note: This equipment has been tested and found to comply with the limits for a Class B digital device, pursuant to part 15 of the FCC Rules. These limits are designed to provide reasonable protection against harmful interference in a residential installation.

This equipment generates, uses and can radiate radio frequency energy and, if not installed and used in accordance with the instructions, may cause harmful interference to radio communications. However, there is no guarantee that interference will not occur in a particular installation. If this equipment does cause harmful interference to radio or television reception, which can be determined by turning the equipment off and on, the user is encouraged to try to correct the interference by one or more of the following measures:

- Reorient or relocate the receiving antenna.
- Increase the separation between the equipment and receiver.
- Connect the equipment into an outlet on a circuit different from that to which the receiver is connected.
- Consult the dealer or an experienced radio/TV technician for help.

This equipment complies with FCC radiation exposure limits set forth for an uncontrolled environment. This equipment should be installed and operated with minimum distance 20cm between the radiator& your body.

This transmitter must not be co-located or operating in conjunction with any other antenna or transmitter.

FCC ID: 2ATFT-B-110

PACKAGING LIST



Projector



AC Adapter



HDMI Cable



Tripod



Remote Control



AAA Battery*2



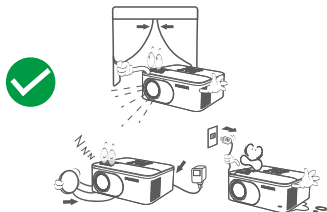
Quick Start Guide



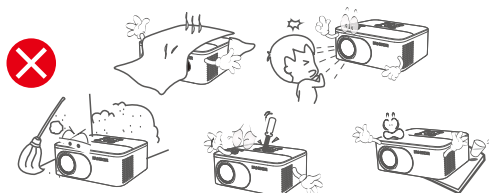
User Manual

NOTICE

Recommended



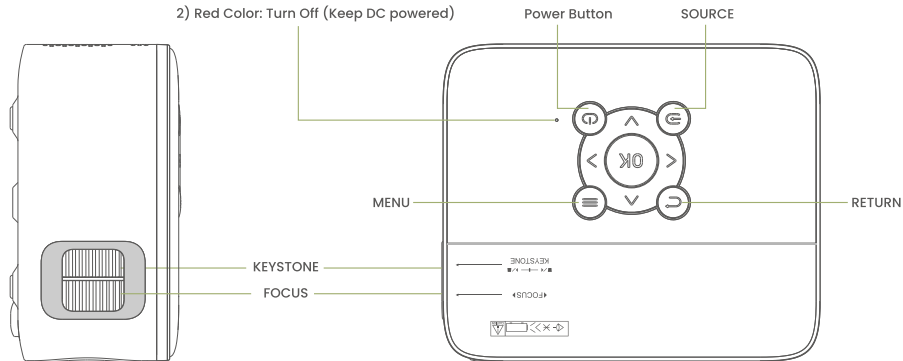
NOT Recommended



FUNCTION OVERVIEW

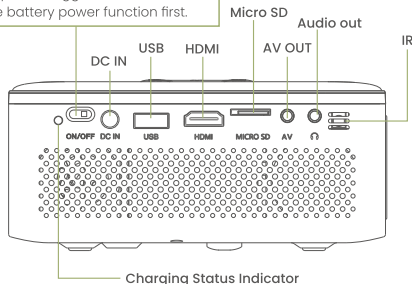
The light indicator for turn On/Off

- 1) White Color: Turn On
- 2) Red Color: Turn Off (Keep DC powered)



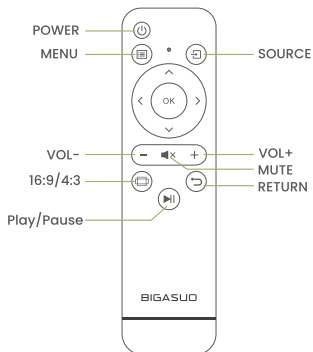
Battery Control Switch

If you are using battery power instead of DC power, toggle the button to turn on the battery power function first.



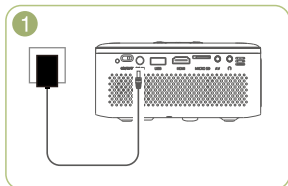
Charging Status Indicator

- 1) Red: Charging
- 2) Green: Full Charge

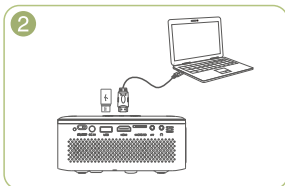


QUICKLY START

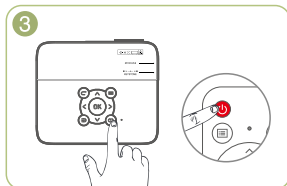
Users are advised to always run on mains power for best performance and stability.



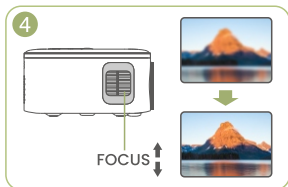
Plug the power cord into an outlet



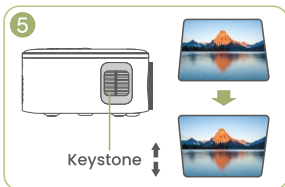
Connect your device to the projector correctly



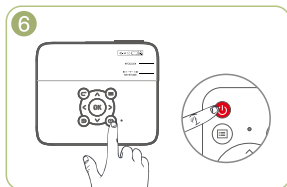
Press the Power Button to turn on the projector.



Adjust the focus ring to get the best image performance.



Adjust the keystone to get the suitable size



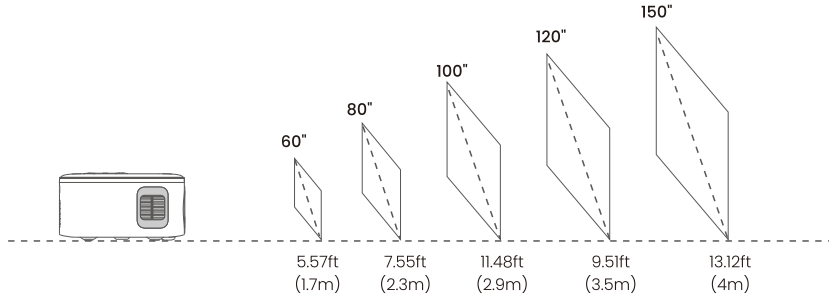
Press the Power Button to turn off the projector

Warm Tips:

1. In order to prolong the life of the battery, you can toggle the battery switch key to turn off the battery power supply.
2. The efficiency of battery power supply is 50%-70% of that of direct plug-in power supply, depending on the usage scenario.

PROJECTION DISTANCE & SIZE

The recommended projection screen is around 80-100 inches with a distance of around 7.55ft-11.48ft. Dark environment & a good project screen will improve the clarity of the projected images.



Warm Tips:

1. The recommended distance is based on the international standard measurement method.
2. The above data is the recommended size, the actual size is related to the use environment.

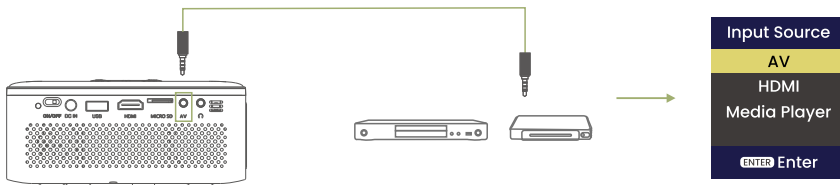
SOURCE

Press (**Source**) on the projector or remote to enter the interface of the Input Source.

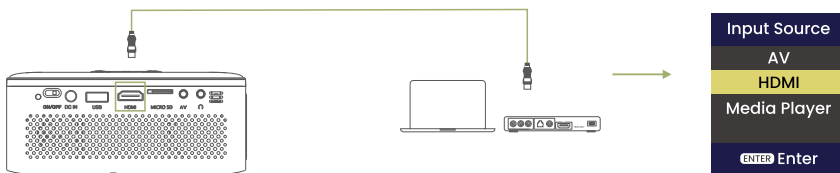
When you are playing with the projector and need to change the input source right now, please insert AV device/HDMI device / U disk or Micro SD card first, then switch the signal source.

Switching Path: Click "SOURCE" on projector or remote control - Select "AV/HDMI/Media Player"

A. AV Connection Input



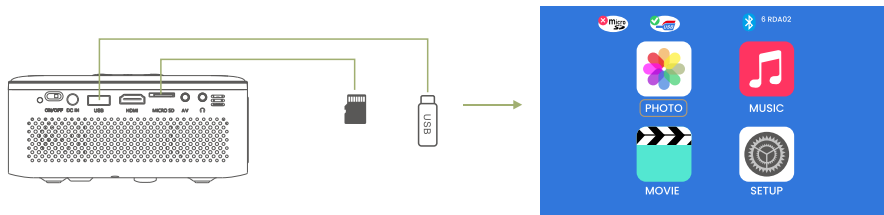
B. HDMI Connection Input



C. Audio devices Connection Output



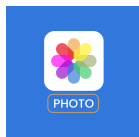
D. USB Connection & Micro SD Input



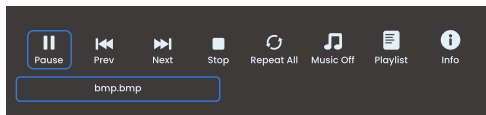
MEDIA PLAYER SETTING

When you are using media player, please choose correct entrance in home page first. If you enter from Movie, it will ONLY detect files of video format in the USB stick. (The other three interface and so on.)

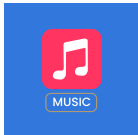
A. Photo Player Setting



Press Menu ☰ button



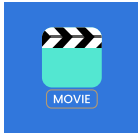
B. Photo Player Setting



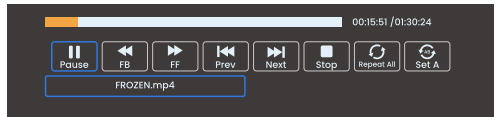
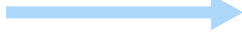
Press Menu ☰ button



C. Movie Player Setting



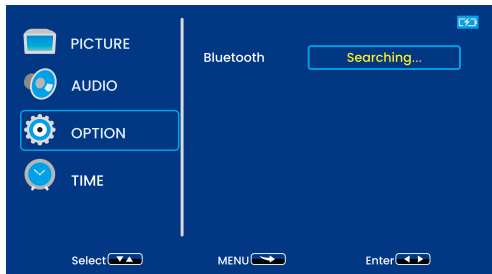
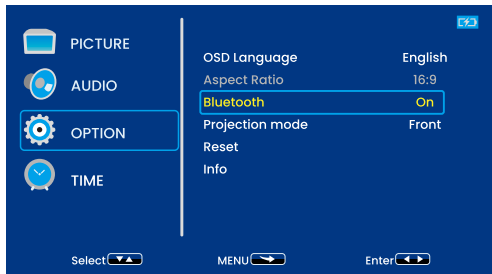
Press Menu ☰ button



BLUETOOTH SETTING

Bluetooth Connecting

1. Go to **Homepage** > **Setup** > **OPTION** > **Bluetooth**
2. Click the "Left" or "Right" button to turn the Bluetooth function ON.
3. Press "OK" button to search for nearby Bluetooth audio devices.
4. Choose the correct Bluetooth device and connect it.



NOTE:

1. Bluetooth function is **ONLY** for audio transfer with audio devices, **NOT** support video sync with smartphones.
2. If you want to connect your headphone/ speaker with audio port, please **disconnect** the Bluetooth audio device from the projector first.

SPECIFICATIONS

Display Technology	LCD	Light Source	LED
Resolution	1080P,720P,480P	Input Signal	HDMI / USB / AV
Aspect Ratio	16:9 / 4:3	Focus/Keystone	Manual
Bluetooth	Only for Audio	Power Supply	100-240V
Power Capacity	48W	Photo Format Supported	jpg .bmp .jpeg .png .webp .gif
Audio Format Supported	mp3 .wma .aac .ogg .pcm ec3 .dtshd .ra .wav .cd .arm flac .midi .mid .mlp .vr	Video Format Supported	avi .wmv .m2t .mts .ts .mpg mp4 .flv .swf .mkv .divx .xvid .rv 3gp .3g2 .pmp .tp .trp .webm
Ports	HDMI/ USB / AV/ 3.5mm Audio	Installation Type	Table Mount/ Ceiling Mount
Unit Dimension	5.74*4.84*2.44 inch (14.6*12.3*6.2cm)	Unit Net Weight	0.63KG/1.39lb

FAQ

Q: The Lamp (Bulb) switches off after a period of time.

- A:** 1. Leave the projector to cool for a few moments.
2. Once cooled, check if anything is blocking the ventilation vents.
3. Turn on the projector.
If the issue persists please contact us.

Q: When playing a video, is see the image but I hear no sound

- A:** If you connect to your laptop via a HDMI adapter. The audio cable of the adapter needs to be plugged into the audio output port from your laptop to the projector using a 3.5mm audio jack.
B: If the projector has no sound, turn off the Dolby sound. (Go to Settings > Display & Sounds > Audio > Dolby Digital Output > Turn Dolby OFF). When using Amazon fire tv stick, if the main unit has no sound, open the setting menu of Amazon fire tv stick and change it to [PCM].

Q: The projection is not bright enough

- A:** We recommend using the projector in a relatively dark environment to bring out the best image brightness. This project is designed for Home Entertainment and s not recommended for Power point or other business presentations.

Q: I get a blurry image?

- A:** The recommended projection distance is 7-11.5ft. Please adjust the Keystone correction to get a rectangular image first, then adjust the Focus to get a clear image.
The optimal focus is obtained when the pixels are clearly visible. If the projection size is too large, the focus near the screen edges may be less sharp than at the screen center.

Q: Bluetooth not work.

- A:** Please note the Bluetooth function is not support to connect with a smartphone or pad etc.
If the Bluetooth speaker or earphone is not able to connect, please contact our customer service, we will help to solve soon.

Need to know more.....

You can contact with us at anytime! Email: us-projector-110@eitack.com

WARRANTY

BIGASUO provides the following service for each customer:

- 30-days full refund or free replacement
- 1-year technology support
- Lifetime professional consult

If you need any help or want to extend the warranty time for your order, please email us:

✉ us-projector-110@eitack.com



HOME THEATER PROJECTOR
B-110 USER MANUAL