



Shenzhen Rui Feng electronic Technology Co., LTD

承 认 书

SPECIFICATION FOR APPROVAL

客户名称 Customer Name	维海德		
客户项目名 Customer Project Name	T632PRO-STA X16	项目名 Project Name	T632PRO-STA X16
客户编码 Customer P/N		料号 P/N	WF5265B-1131L-175 (X16) 黑
频段 Band	WIFI2. 4G/5. 8G/BT		
版本号 Version	A0		
设计人信息/Designer Information			
射频工程师 RF Engineer	符学荣	研发主管 R&D Director	夏承磊
结构工程师 ME Engineer	黄宗宝		

审批/ Approval			客户批准/Customer Approval		
	制作 Prepared By	审核 Checked By	批准 Approval By	审核 Checked By	批准 Approval By
签章 Signature	李瑶娜	符学荣	夏承磊		
日期 Date	2024. 2. 23	2024. 2. 23	2024. 2. 23		

修订履历/Change Log				
版本 Version	修订内容 Change Description	责任人 Person in Charge	核准 Approval By	日期 Date



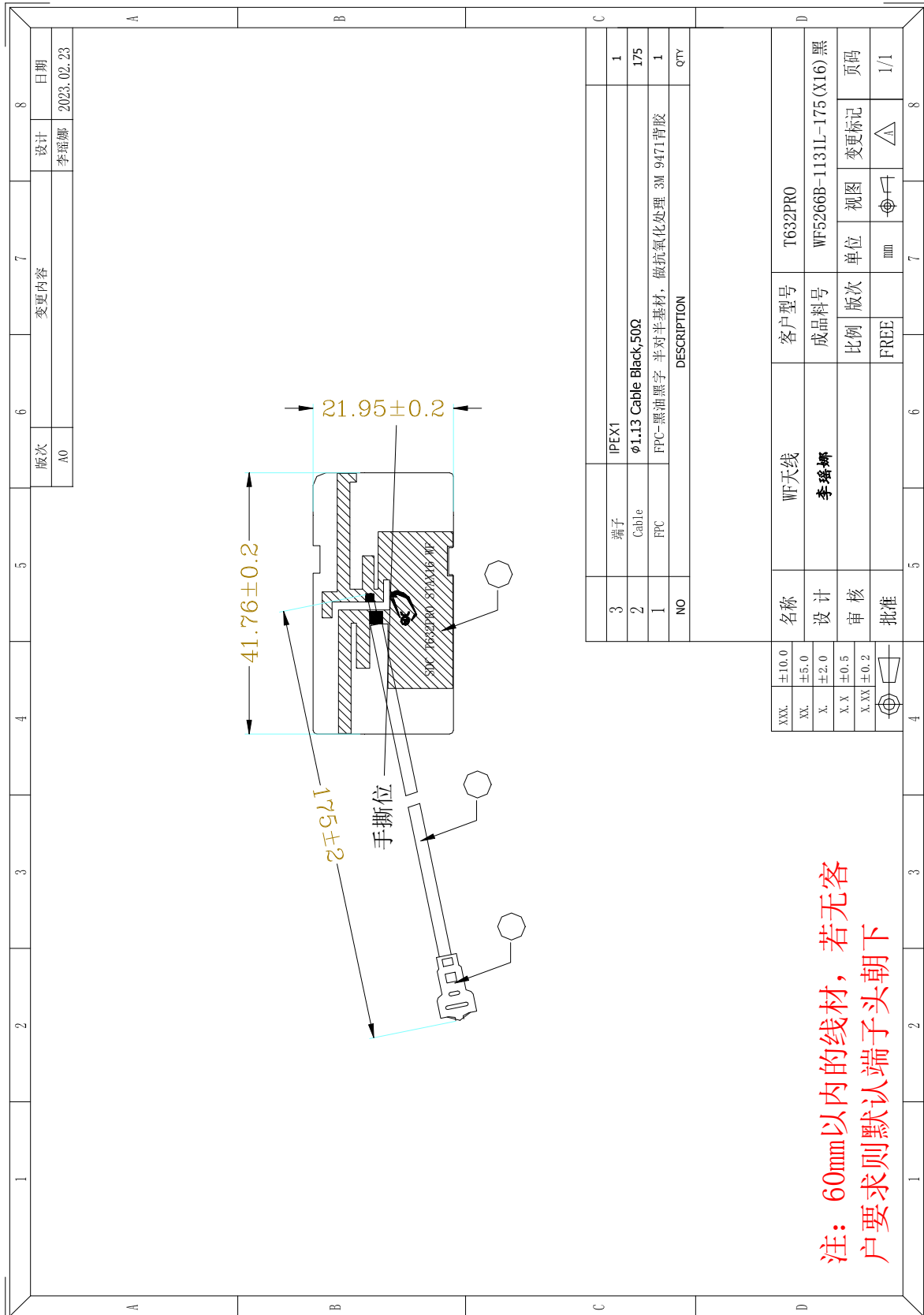
Shenzhen Rui Feng electronic Technology Co., LTD

目录/Catalogue

序号 No.	项目 Item	页码 Page No.
1	图纸或实物图片 Drawing or Product Image	3/5
2	尺寸测量报告 Dimensions Test Report	4/6
3	射频性能测试报告 RF Performance Test Report	7-10

产品图纸或实物图片

Drawing or Product Image



样品尺寸测量报告

Sample Dimensions Test Report

测试日期 Test Date	2024. 2. 23	样品数量 Sample Qty.	3	测试人 Inspector	许燕芳
尺寸编号 Dimension No.	标准 Standard	样品 1 Sample 1	样品 2 Sample 2	样品 3 Sample 3	Pass/NG
①长度	41.76±0.2mm	41.8	41.9	41.8	Pass
②宽度	21.95±0.2mm	21.95	21.95	22.05	Pass
③厚度	0.1±0.03mm	0.1	0.1	0.1	Pass
④线长	175±2mm	175	175	176	Pass
最终结论 Conclusion					PASS
测试人&日期 Inspector & Date	许燕芳 2024. 2. 23		批准&日期 Approval & Date		

射频性能测量报告

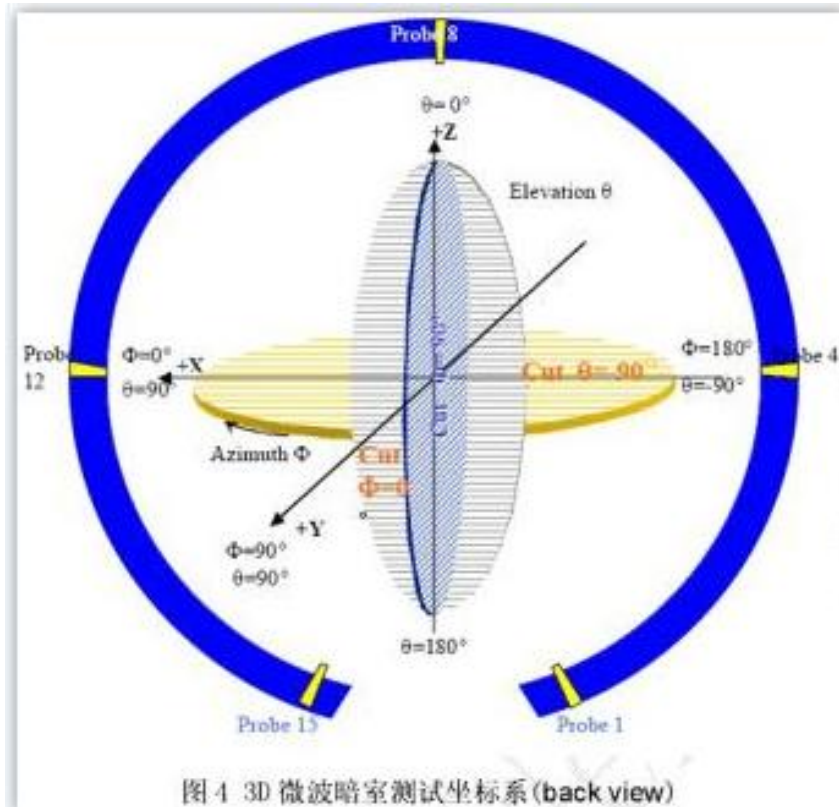
RF Performance Test Report

天线测试设备简介

Antenna Test Equipment Introduction

测试天线输入特性使用 Agilent E5071C and Agilent 5062A 矢量网络分析仪；辐射特性利用广屏三维近场暗室进行测试，并分别使用 8960 E5515 和 Agilent E4438C 进行了分析。暗房的测试坐标如下：

Test of antenna input characteristics using Agilent E5071C and Agilent 5062A vector network analyzer; The radiation pattern of the antenna are tested using the guangping 3D near field Anechoic Chamber, and the instrument is used to agilent8960 E5515 and Agilent E4438C. The test coordinates of the darkroom are as follows:

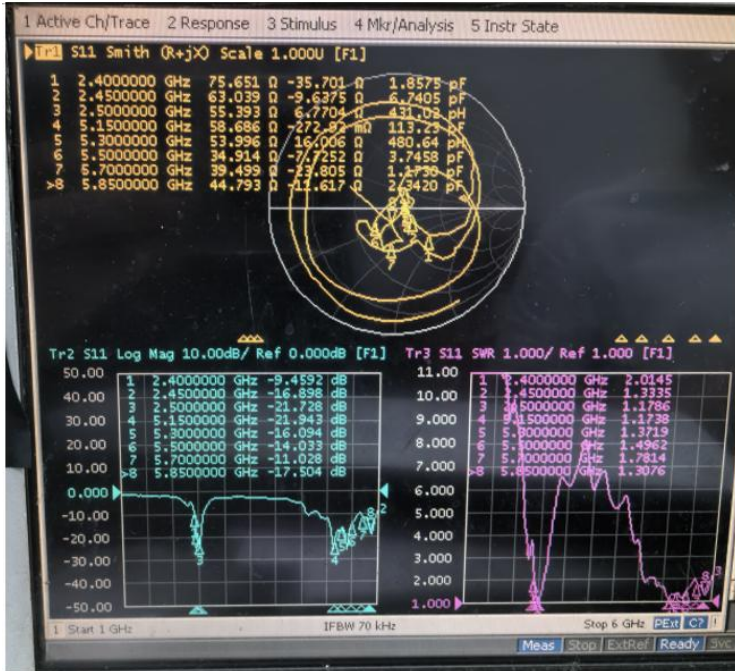


1. S11 参数测量/S11 Parameter-VSWR

使用一根 50Ω 同轴电缆连接到天线，然后该电缆连接到网络分析仪测量 S11 参数，被测量产品远离金属至少 20 厘米。

Measuring Method is a 50Ω coaxial cable is connected to the antenna. Then this cable is connected to a network analyzer to measure the S11 parameter, Keeping this fixture away from metal at least 20cm.

S11 Parameter-VSWR



频率 (MHZ)	2400	2450	2500	5150	5300	5500	5700	5850
驻波比	2.01	1.33	1.17	1.17	1.37	1.49	1.78	1.3

频率 (MHZ)	2400	2450	2500	5150	5300	5500	5700	5850
阻抗	75.6 Ω	63 Ω	55.3 Ω	58.6 Ω	53.9 Ω	34.9 Ω	39.4 Ω	44.7 Ω

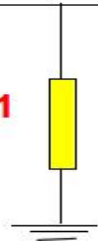
频率 (MHZ)	2400	2450	2500	5150	5300	5500	5700	5850
回损	-9.4	-16.8	-21.7	-21.9	-16	-14	-11	-17.5

2. 天线匹配网络/Antenna Matching Network

Antenna



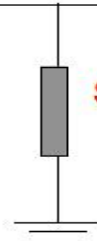
Shunt 01
N/A



Series
N/A



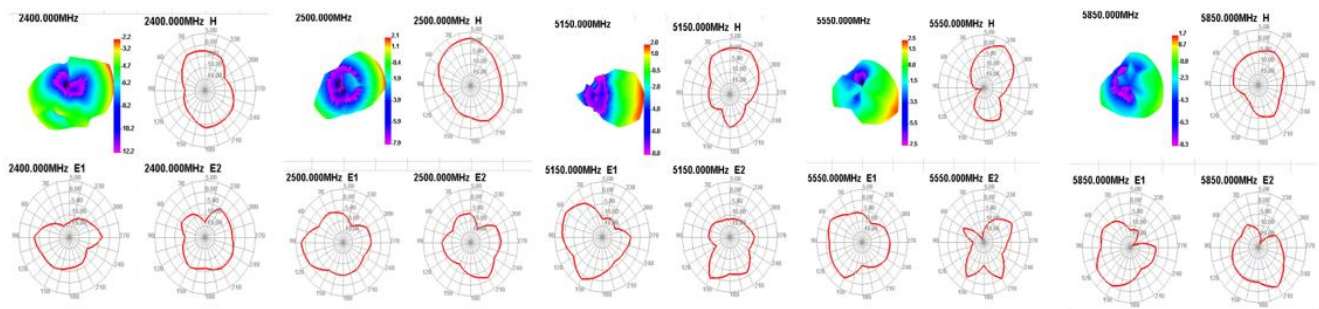
Shunt 02
N/A



PA

3. Gain & Efficiency

Frequency (MHz)	Efficiency (%)	Peak GAIN (dBi)
2400	28.73	-2.2
2450	33.12	1.18
2500	39.78	2.08
5150	42.37	2.04
5350	41.02	2.45
5550	42.64	2.55
5750	36.49	3.03
5850	30.97	1.72



4. 隔离度

STA-(X15-X16)隔离度



频率 (MHZ)	2400	2450	2500	5150	5350	5550	5750	5850
隔离度	-24.7	-25.3	-20.4	-26.3	-34.2	-40.7	-26.9	-26.4