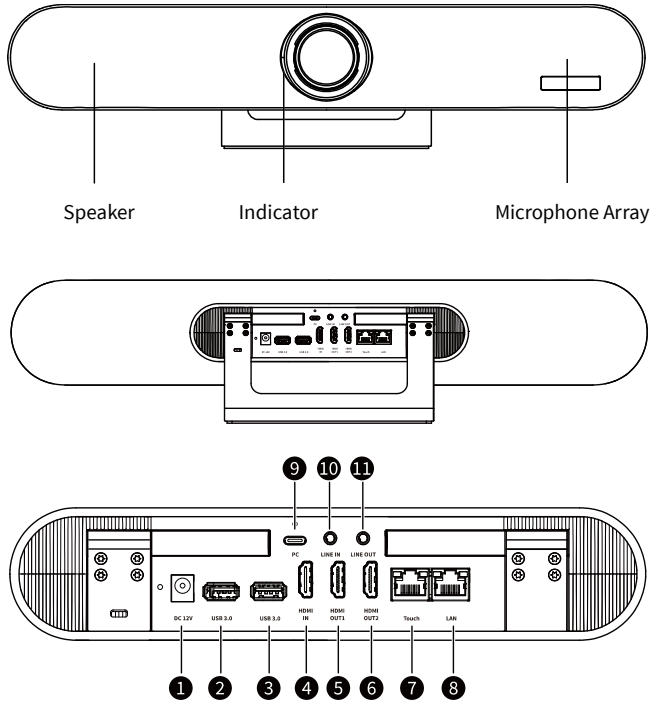


Integrated UHD Video Conferencing Terminal

Quick Start Guide

1 Appearance and Interface



No.	Interface	Description
1	DC 12V	Power interface.
2	USB 3.0	USB 3.0 Type-A interface, connect to U-disk, Mouse, Keyboard and other USB devices.
3	USB 3.0	USB 3.0 Type-A interface, connect to U-disk, Mouse, Keyboard and other USB devices.
4	HDMI IN	HDMI input interface, connect to PC or Camera, support audio input.
5	HDMI OUT1	HDMI output interface 1, connect to the Integrated Terminal and HDTV via HDMI cable, support audio output.
6	HDMI OUT2	HDMI output interface 2, connect to the Integrated Terminal and HDTV via HDMI cable.
7	Touch	Touch interface, connect to the Tablet and other control device, support PoE power supply.
8	LAN	Network interface, connect the Integrated Terminal to network via the network cable.
9	PC	PC interface, used as a camera and speakerphone when connect to PC.
10	LINE IN	3.5mm audio input interface.
11	LINE OUT	3.5mm audio output interface.

2 Installation and Connection



Warning

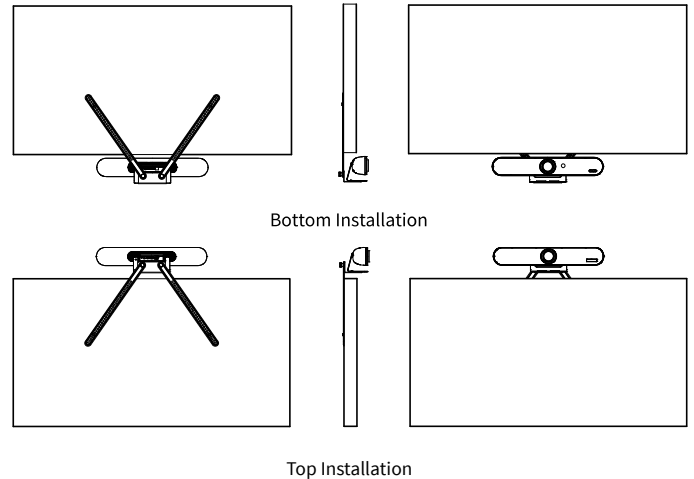
Operating this equipment in a residential environment may cause radio interference.

The Integrated Terminal can be placed on horizontal desktop or installed on the TV and wall with bracket.

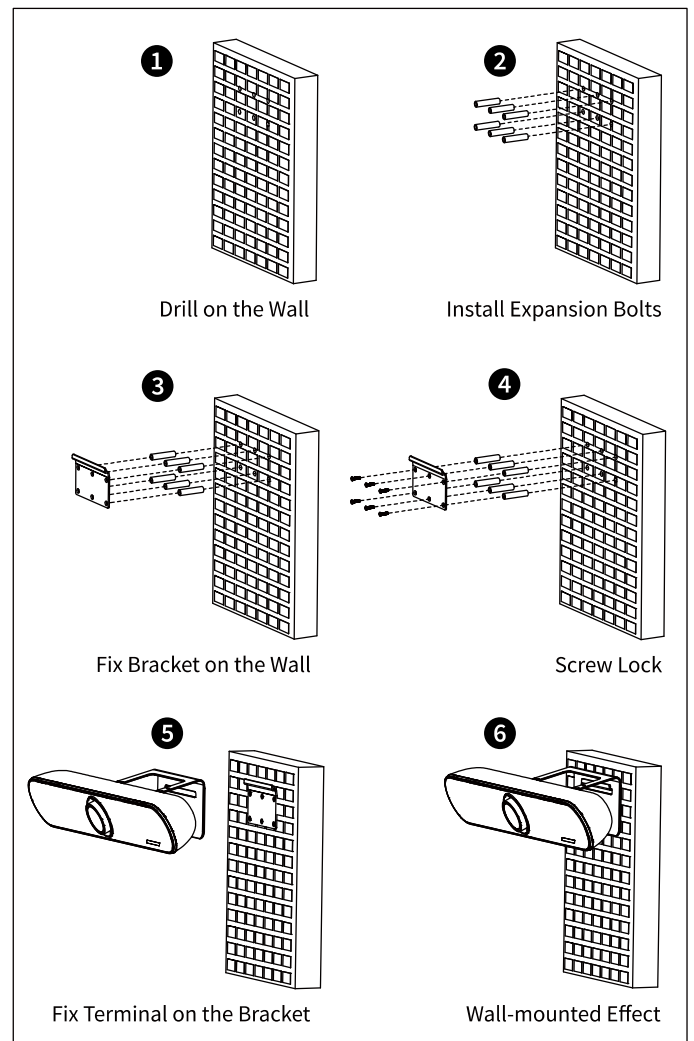
2.1 Desktop Installation

Place the Integrated Terminal on the desktop, keep the desktop steady and pay attention to the anti-slip.

2.2 Install on TV with Bracket (optional)

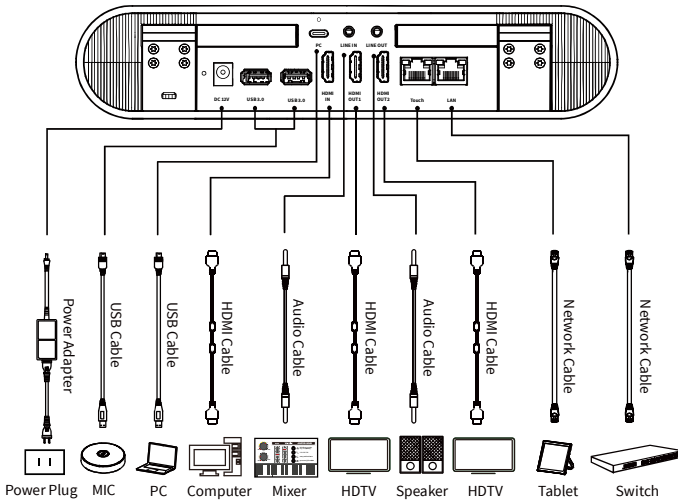


2.3 Install on Wall with Bracket



2.4 Connection

The cable connections shown in the following figure contains optional configurations and for reference only. Please connect the cables according to actual needs.



Power

- Connect the power cord to the supplied power adapter, and then connect the terminal to the power outlet via the power adapter.

Network

- Connect LAN via network cable;
- Or, connect LAN via Wi-Fi.

Audio Input

- Audio input via the built-in microphone;
- Or, connect microphone to the USB interface via USB cable;
- Connect PC or mixer to the LINE IN interface via 3.5mm audio cable.

Audio Output

- Audio output via the built-in speaker;
- Or, connect TV to the HDMI OUT1 interface via HDMI cable;
- Or, connect speaker to the LINE OUT interface via 3.5mm audio cable.

Image Input

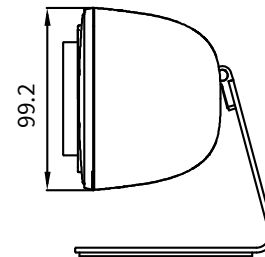
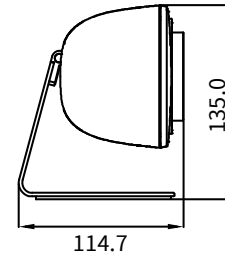
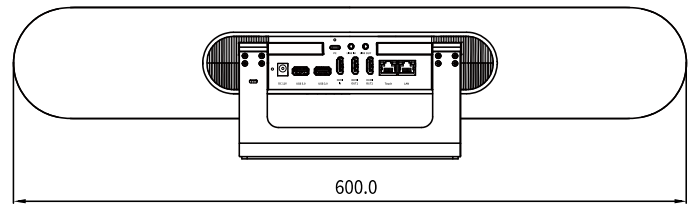
- Image input via the built-in camera;
- Connect camera to the HDMI IN interface via HDMI cable;
- Or, connect PC or other devices to the HDMI IN interface via HDMI cable.

Image Output

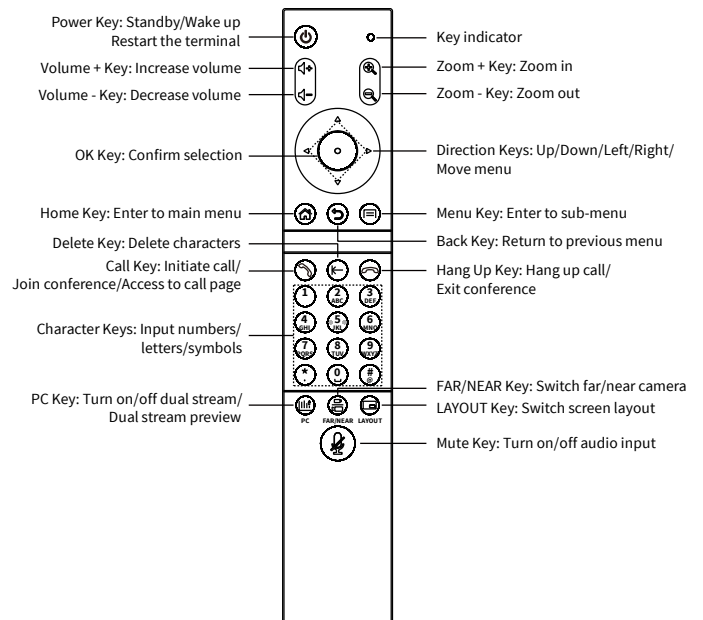
- Connect TV and other display devices to the HDMI OUT1 interface via HDMI cable to output the main image.
- Connect TV and other display devices to the HDMI OUT2 interface via HDMI cable to output the second image.

3 Product Dimension

Unit: mm



4 Remote Control



The remote control may be affected by strong light and the normal working distance is about 10 meters.

5 FCC Compliance Statements

This device complies with Part 15 of the FCC Rules. Operation is subject to the following two conditions:

- a) This device may not cause harmful interference.
- b) This device must accept any interference received, including interference that may cause undesired operation.



Note: This equipment has been tested and found to comply with the limits for a Class B digital device, pursuant to Part 15 of the FCC Rules. These limits are designed to provide reasonable protection against harmful interference in a residential installation. This equipment generates, uses and can radiate radio frequency energy and, if not installed and used in accordance with the instructions, may cause harmful interference to radio communications. However, there is no guarantee that interference will not occur in a particular installation.

If this equipment does cause harmful interference to radio or television reception, which can be determined by turning the equipment off and on, the user is encouraged to try to correct the interference by one or more of the following measures:

- Reorient or relocate the receiving antenna.
- Increase the separation between the equipment and receiver.
- Connect the equipment into an outlet on a circuit different from that to which the receiver is connected.
- Consult the dealer or an experienced radio/TV technician for help.

Caution: Changes or modifications not expressly approved by the party responsible for compliance could void the user's authority to operate the equipment.

This equipment complies with FCC radiation exposure limits set forth for an uncontrolled environment. This equipment should be installed and operated with minimum distance 20cm between the radiator and your body.

6 ISED Compliance Statements

This device contains license-exempt transmitter(s)/receiver(s) that comply with Innovation, Science and Economic Development Canada's licence-exempt RSS(s). Operation is subject to the following two conditions: (1) This device may not cause interference. (2) This device must accept any interference, including interference that may cause undesired operation of the device.

L'émetteur/récepteur exempt de licence contenu dans le présent appareil est conforme aux CNR d'Innovation, Sciences et Développement économique Canada applicables aux appareils radio exempts de licence. L'exploitation est autorisée aux deux conditions suivantes : (1) L'appareil ne doit pas produire de brouillage; (2) L'appareil doit accepter tout brouillage radioélectrique subi, même si le brouillage est susceptible d'en compromettre le fonctionnement.

This equipment complies with IC RSS-102 radiation exposure limits set forth for an uncontrolled environment. This equipment should be installed and operated with minimum distance 20cm between the radiator and your body.

Cet équipement est conforme aux limites d'exposition aux radiations IC CNR-102 établies pour un environnement non contrôlé. Cet équipement doit être installé et utilisé avec une distance minimale de 20cm entre le radiateur et votre corps.

- a) The device for operation in the band 5150-5250 MHz is only for indoor use to reduce the potential for harmful interference to co-channel mobile satellite systems;
- b) The maximum antenna gain permitted for devices in the band 5725-5825 MHz shall comply with the e.i.r.p. limits specified for point-to-point and non point-to-point operation as appropriate.
- c) les dispositifs fonctionnant dans la bande 5150-5250 MHz sont réservés uniquement pour une utilisation à l'intérieur afin de réduire les risques de brouillage préjudiciable aux systèmes de satellites mobiles utilisant les mêmes canaux.

Le gain maximal d'antenne permis (pour les dispositifs utilisant la bande 5725-5825 MHz). doit se conformer à la limite de p.i.r.e. spécifiée pour l'exploitation point à point et non point à point, selon le cas.