

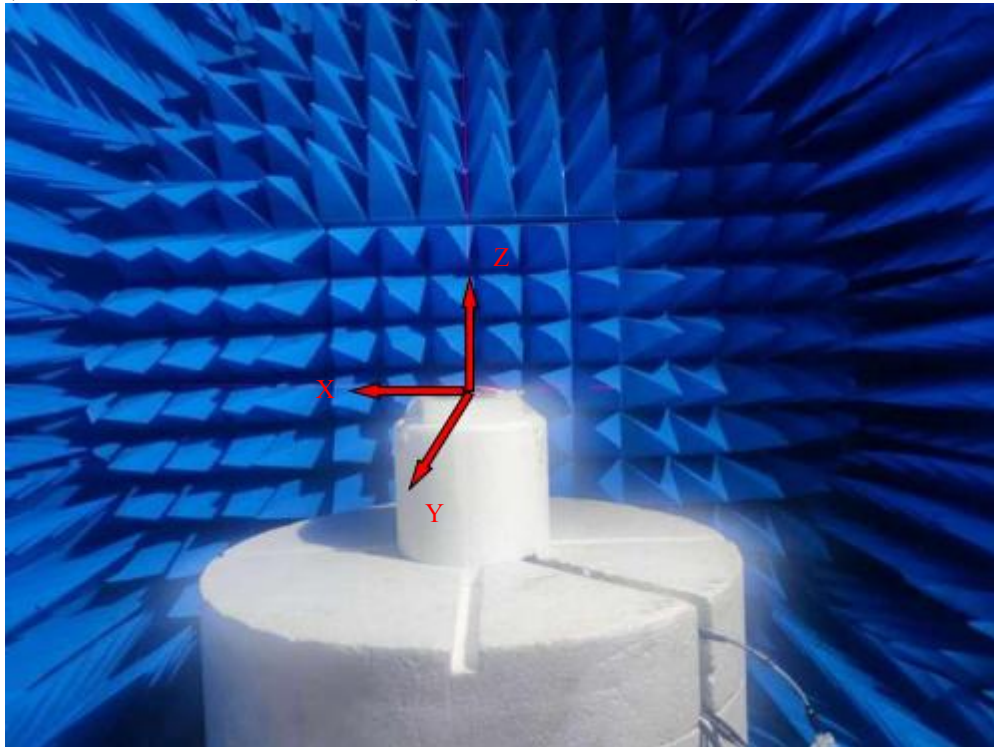
## 2.4G-2.48G PCB ANT

### SPECIFICATIONS

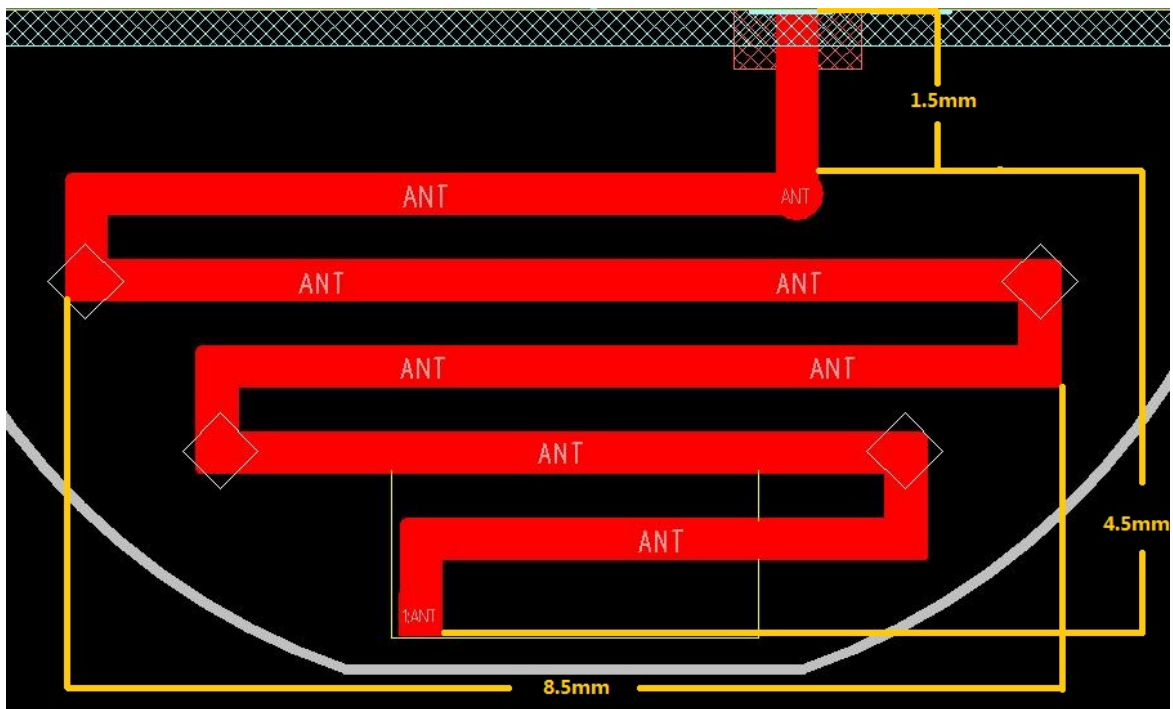
Frequency ( MHz )	2400-2480
Peak Gain ( dBi )	2.499
Average Gain ( dBi )	> -4
VSWR	< 3.2
Impedance ( $\Omega$ )	50 $\Omega$
Antenna Type	PCB Antenna
Polarization	Linear

Manufacturer: HONG KONG ETECH GROUPS LIMITED  
Add.: 16/F, Block C, 2nd Phase of Central Avenue, Haihong  
Industrial Area, Xixiang Road, Baoan District, Shenzhen, 518102  
China

测试环境：中科国技暗室测试系统

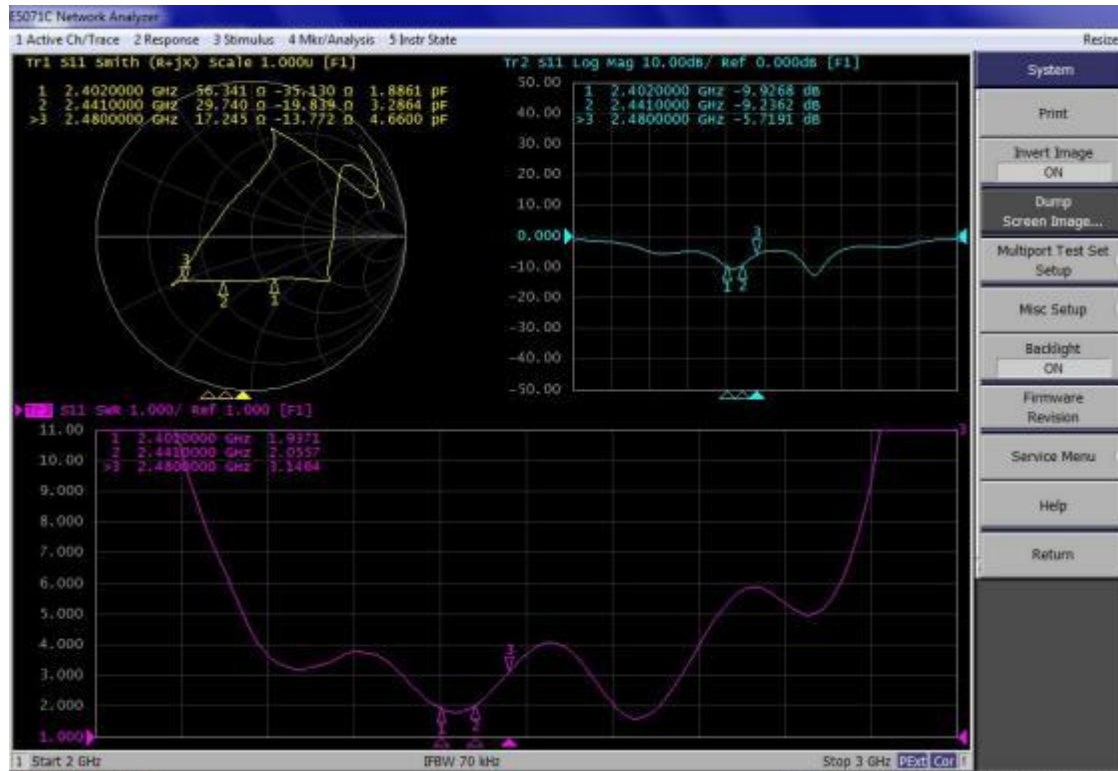


# 天线示意图



All the technical data and information contained herein are subject to change without prior notice

天线无源 S 参数：  
驻波比 ( VSWR )、回波损耗 ( Return Loss )



### Antenna efficiency and gain

Frequency ( MHz )	Gain ( dBi )	Efficiency ( % )	AverageGain ( dBi )	Efficiency ( dB )
2400	1.433	59.329%	-2.717	-2.267
2410	0.927	51.861%	-3.416	-2.852
2420	0.829	52.112%	-3.166	-2.831
2430	0.881	49.299%	-3.258	-3.072
2440	1.192	50.672%	-3.144	-2.952
2450	1.688	53.067%	-2.735	-2.752
2460	2.194	59.423%	-2.276	-2.260
2470	2.118	56.680%	-2.438	-2.466
2480	2.499	61.727%	-2.112	-2.095
Average	1.529	54.908%	-2.806	-2.616
Peak	2.499	61.727%	-2.112	-2.095

## 2480MHz 3D Pattern



2.499  
1.693  
0.781  
-0.138  
-1.055  
-1.968  
-2.873  
-3.788  
-4.691  
-5.618  
-6.522  
-7.433  
-8.342  
-9.268  
-10.24  
-11.12  
-12  
-12.93

