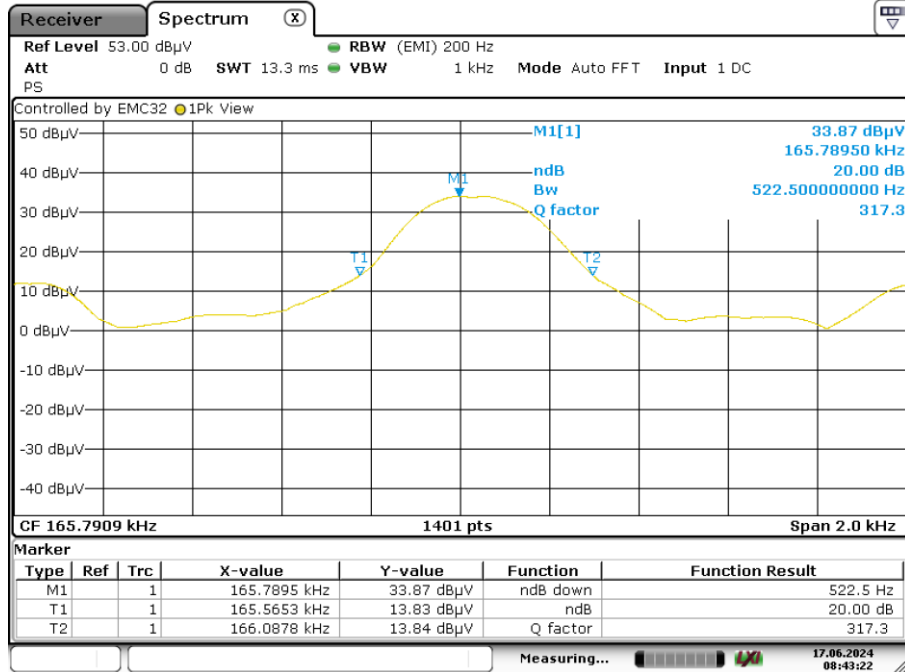


Appendix A: Test Results of FCC Part 15C

APPENDIX A: TEST RESULTS OF FCC PART 15C.....	1
APPENDIX A.1: TEST RESULTS OF 20DB BANDWIDTH	2
<i>Phone wireless charging</i>	2
<i>Earbuds wireless charging</i>	2
<i>Watch wireless charging</i>	3
APPENDIX A.2: TEST RESULTS OF FIELD STRENGTH OF FUNDAMENTAL AND HARMONICS	4
<i>Phone wireless charging</i>	4
<i>Earbuds wireless charging</i>	15
<i>Watch wireless charging</i>	26
<i>Phone + Earbuds + Watch wireless charging</i>	37
<i>Standby</i>	48
APPENDIX A.3: TEST RESULTS OF CONDUCTED EMISSION ON AC MAINS.....	59

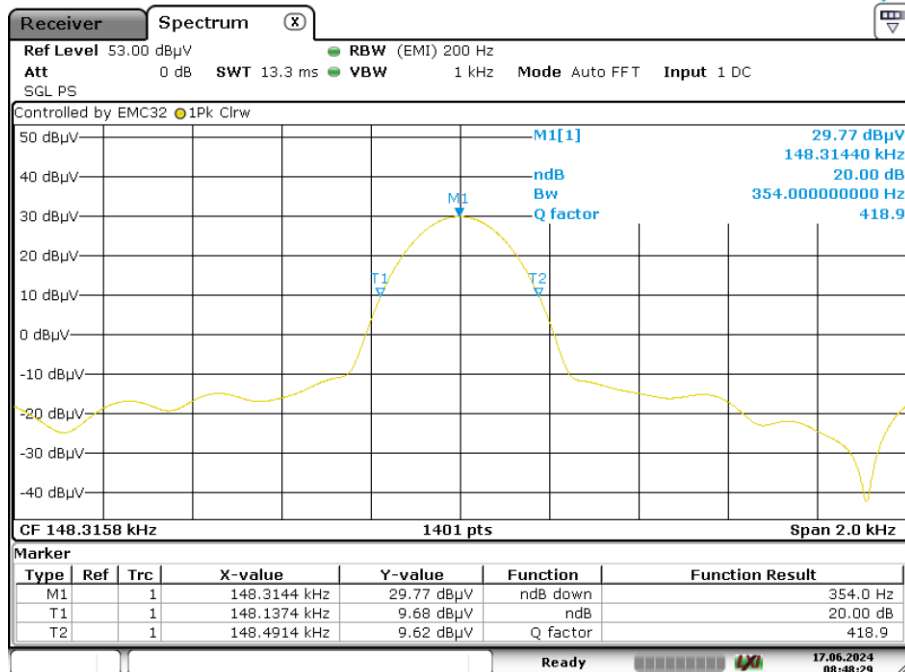
Appendix A.1: Test Results of 20dB Bandwidth

Phone wireless charging



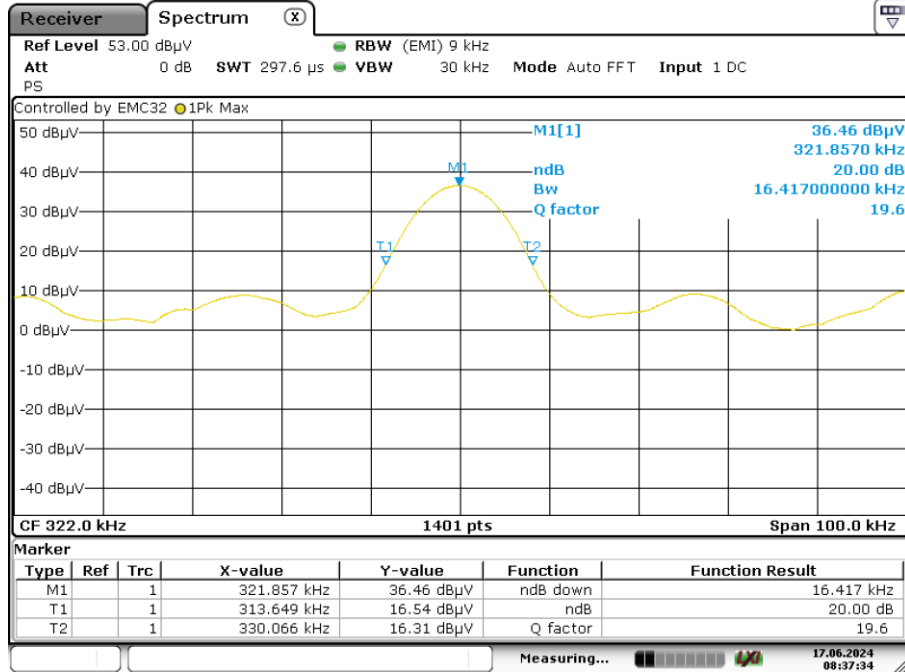
Date: 17.JUN.2024 08:43:22

Earbuds wireless charging



Date: 17.JUN.2024 08:48:29

Watch wireless charging



Date: 17.JUN.2024 08:37:34

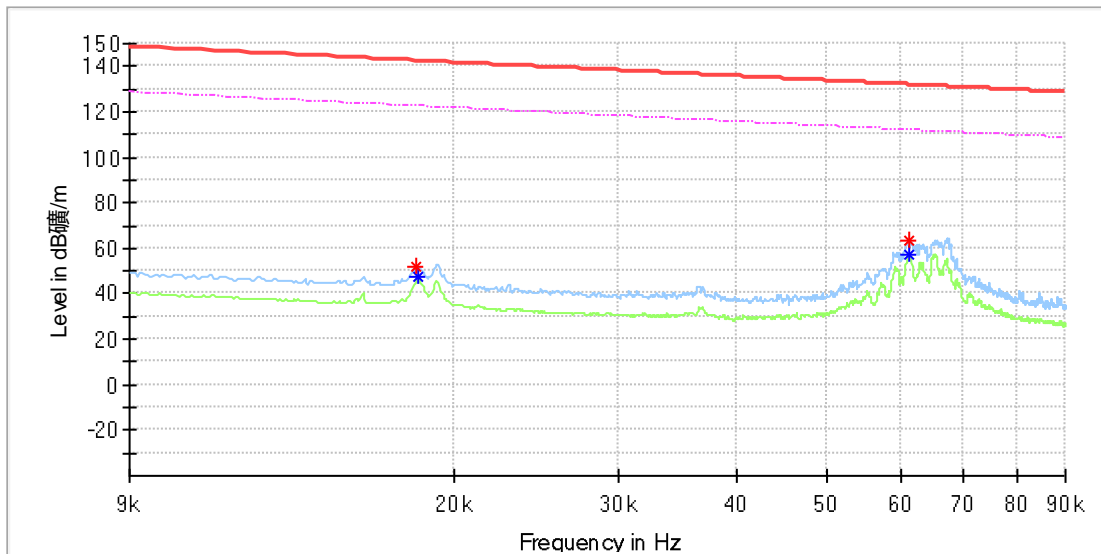
Appendix A.2: Test Results of Field Strength of Fundamental and Harmonics

Note: The highest waveform in the figure is Fundamental.

Phone wireless charging

EUT Information

EUT Name:	3 IN 1 WIRELESS CHARGING STAND
Model:	#03170
Test Mode:	Phone wireless charging
Order No/Sample No:	168484850/A003720195-001
Test Voltage:	120V/60Hz
Remark:	Temp 22 Humi:52%
Test Standard:	FCC Part 15C
Tested By:	Kei Zhang
Reviewed By:	Terry Yin

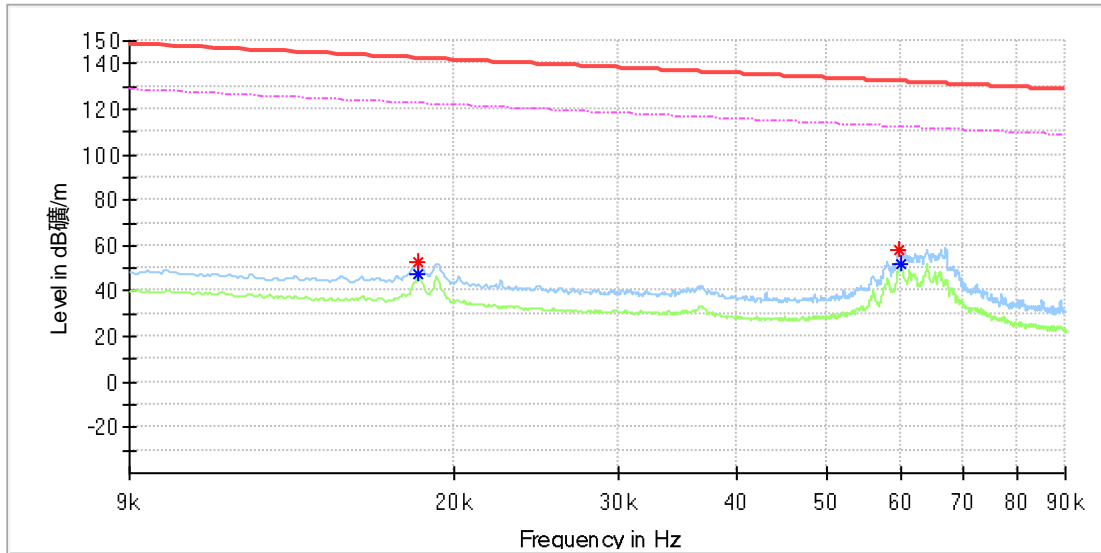


Critical Freqs

Frequency (MHz)	MaxPeak (dBµV/m)	Average (dBµV/m)	Limit (dBµV/m)	Margin (dB)	Height (cm)	Pol	Azimuth (deg)	Corr. (dB/m)
0.018257	52.03	---	142.36	90.33	100.0	X	261.0	20.0
0.018315	---	47.43	122.33	74.91	100.0	X	82.0	20.0
0.061187	---	57.49	111.86	54.37	100.0	X	89.0	20.0
0.061361	63.41	---	131.84	68.42	100.0	X	69.0	20.0

EUT Information

EUT Name:	3 IN 1 WIRELESS CHARGING STAND
Model:	#03170
Test Mode:	Phone wireless charging
Order No/Sample No:	168484850/A003720195-001
Test Voltage:	120V/60Hz
Remark:	Temp 22 Humi:52%
Test Standard:	FCC Part 15C
Tested By:	Kei Zhang
Reviewed By:	Terry Yin

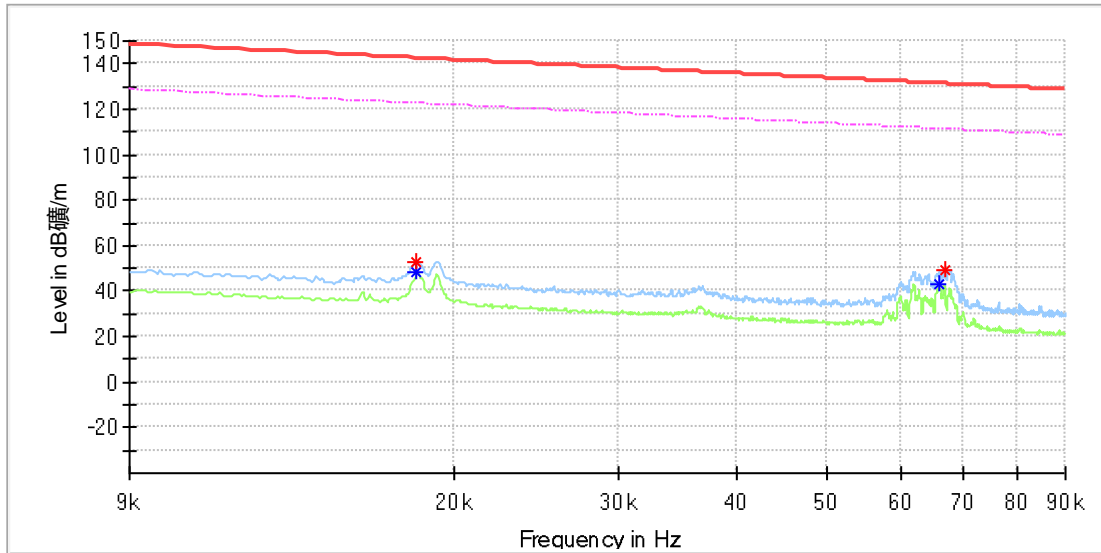


Critical Freqs

Frequency (MHz)	MaxPeak (dBµV/m)	Average (dBµV/m)	Limit (dBµV/m)	Margin (dB)	Height (cm)	Pol	Azimuth (deg)	Corr. (dB/m)
0.018315	52.36	---	142.33	89.97	100.0	Y	35.0	20.0
0.018315	---	47.32	122.33	75.01	100.0	Y	35.0	20.0
0.059914	58.47	---	132.04	73.57	100.0	Y	18.0	20.0
0.060088	---	52.19	112.02	59.83	100.0	Y	23.0	20.0

EUT Information

EUT Name:	3 IN 1 WIRELESS CHARGING STAND
Model:	#03170
Test Mode:	Phone wireless charging
Order No/Sample No:	168484850/A003720195-001
Test Voltage:	120V/60Hz
Remark:	Temp 22 Humi:52%
Test Standard:	FCC Part 15C
Tested By:	Kei Zhang
Reviewed By:	Terry Yin

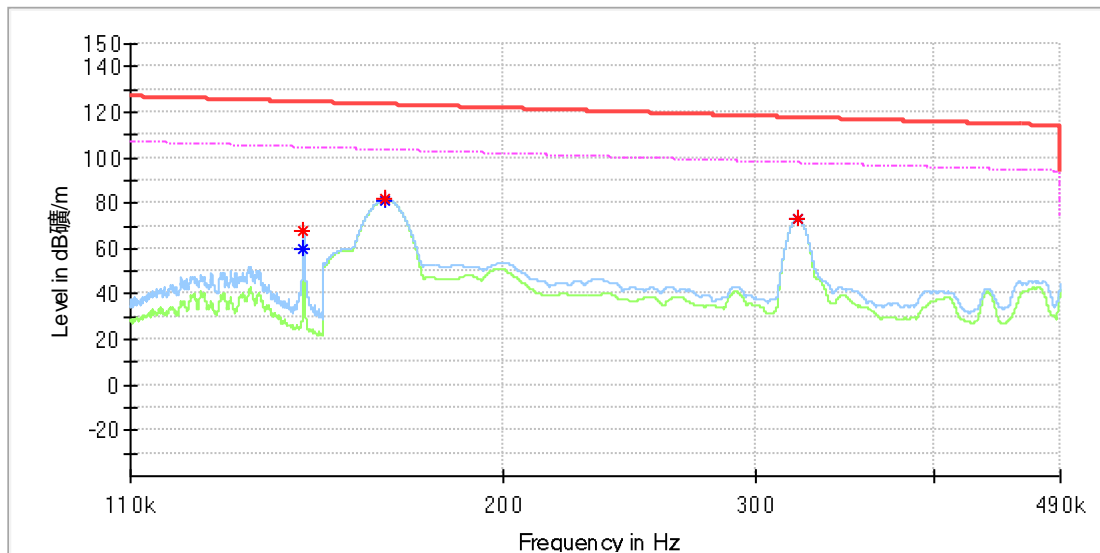


Critical Freqs

Frequency (MHz)	MaxPeak (dBµV/m)	Average (dBµV/m)	Limit (dBµV/m)	Margin (dB)	Height (cm)	Pol	Azimuth (deg)	Corr. (dB/m)
0.018257	52.79	---	142.36	89.57	100.0	Z	68.0	20.0
0.018257	---	48.58	122.36	73.78	100.0	Z	68.0	20.0
0.065989	---	43.15	111.21	68.06	100.0	Z	96.0	20.0
0.0666857	49.47	---	131.09	81.62	100.0	Z	89.0	20.0

EUT Information

EUT Name:	3 IN 1 WIRELESS CHARGING STAND
Model:	#03170
Test Mode:	Phone wireless charging
Order No/Sample No:	168484850/A003720195-001
Test Voltage:	120V/60Hz
Remark:	Temp 22 Humi:52%
Test Standard:	FCC Part 15C
Tested By:	Kei Zhang
Reviewed By:	Terry Yin

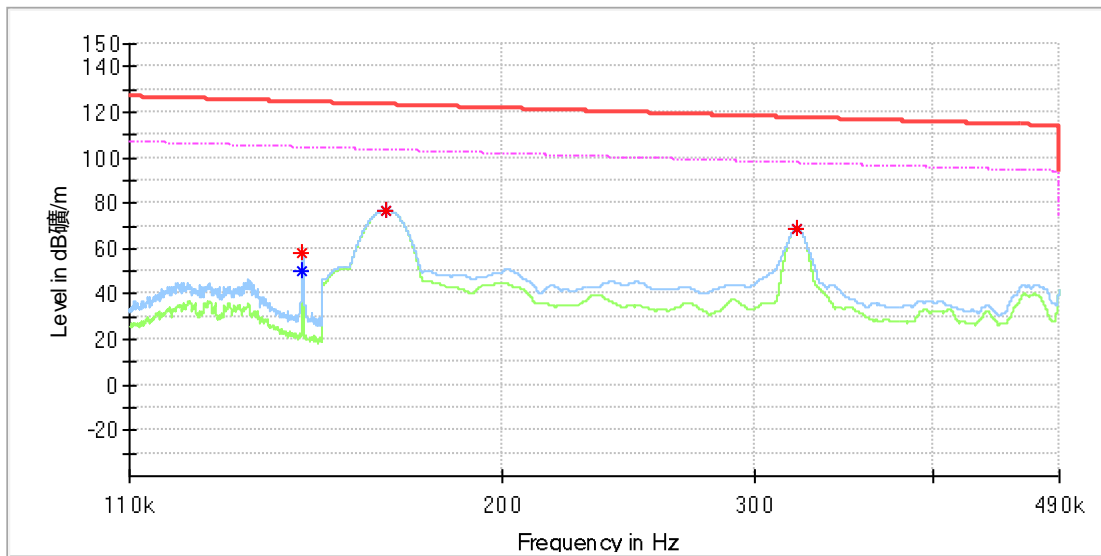


Critical Freqs

Frequency (MHz)	MaxPeak (dBµV/m)	Average (dBµV/m)	Limit (dBµV/m)	Margin (dB)	Height (cm)	Pol	Azimuth (deg)	Corr. (dB/m)
0.145314	68.25	---	124.35	56.10	100.0	X	28.0	20.0
0.145314	---	60.30	104.35	44.05	100.0	X	28.0	20.0
0.165650	81.53	---	123.22	41.68	100.0	X	0.0	20.0
0.165650	---	81.50	103.22	21.72	100.0	X	0.0	20.0
0.321150	72.87	---	117.47	44.60	100.0	X	171.0	20.0
0.321150	---	72.84	97.47	24.62	100.0	X	171.0	20.0

EUT Information

EUT Name:	3 IN 1 WIRELESS CHARGING STAND
Model:	#03170
Test Mode:	Phone wireless charging
Order No/Sample No:	168484850/A003720195-001
Test Voltage:	120V/60Hz
Remark:	Temp 22 Humi:52%
Test Standard:	FCC Part 15C
Tested By:	Kei Zhang
Reviewed By:	Terry Yin

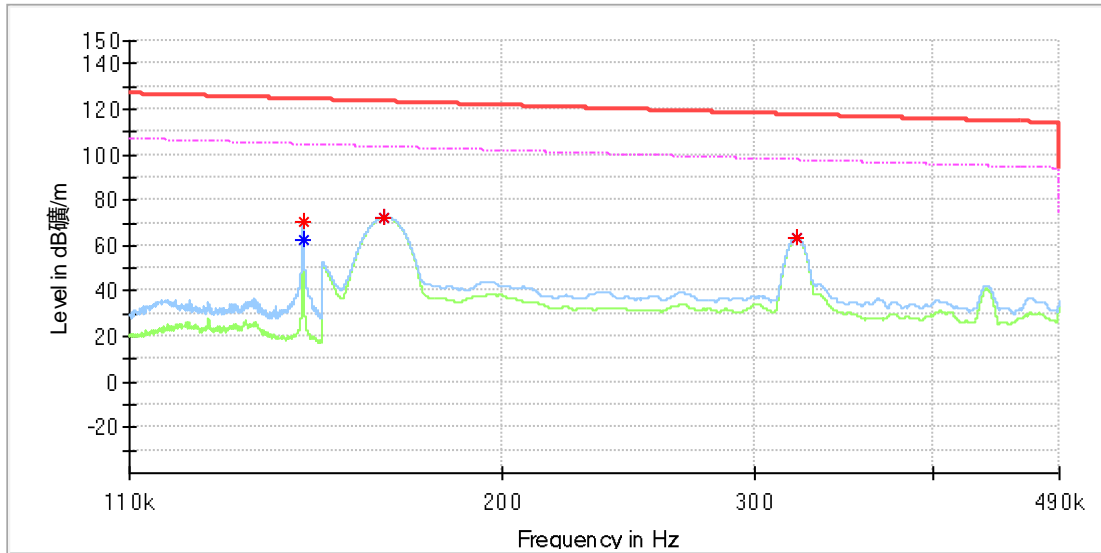


Critical Freqs

Frequency (MHz)	MaxPeak (dBµV/m)	Average (dBµV/m)	Limit (dBµV/m)	Margin (dB)	Height (cm)	Pol	Azimuth (deg)	Corr. (dB/m)
0.145314	58.31	---	124.35	66.04	100.0	Y	129.0	20.0
0.145314	---	49.99	104.35	54.36	100.0	Y	129.0	20.0
0.166300	76.89	---	123.18	46.29	100.0	Y	271.0	20.0
0.166300	---	76.84	103.18	26.34	100.0	Y	271.0	20.0
0.321400	68.79	---	117.46	48.67	100.0	Y	258.0	20.0
0.321500	---	68.69	97.46	28.77	100.0	Y	258.0	20.0

EUT Information

EUT Name: 3 IN 1 WIRELESS CHARGING STAND
 Model: #03170
 Test Mode: Phone wireless charging
 Order No/Sample No: 168484850/A003720195-001
 Test Voltage: 120V/60Hz
 Remark: Temp 22 Humi:52%
 Test Standard: FCC Part 15C
 Tested By: Kei Zhang
 Reviewed By: Terry Yin

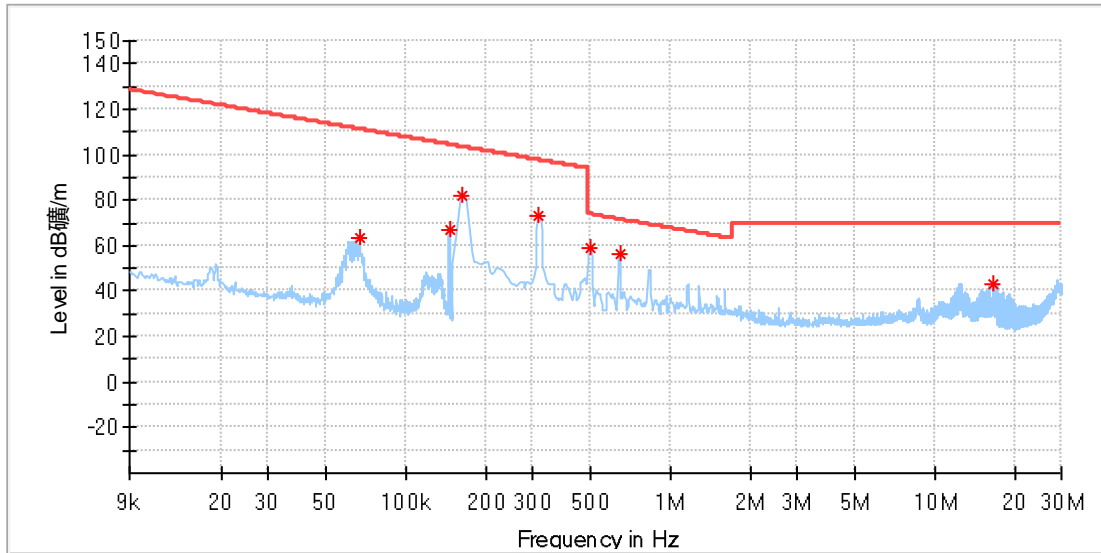


Critical Freqs

Frequency (MHz)	MaxPeak (dBμV/m)	Average (dBμV/m)	Limit (dBμV/m)	Margin (dB)	Height (cm)	Pol	Azimuth (deg)	Corr. (dB/m)
0.145371	---	62.21	104.35	42.14	100.0	Z	38.0	20.0
0.145400	70.04	---	124.35	54.30	100.0	Z	38.0	20.0
0.165600	72.57	---	123.22	50.65	100.0	Z	0.0	20.0
0.165600	---	72.38	103.22	30.83	100.0	Z	0.0	20.0
0.321200	---	63.67	97.47	33.80	100.0	Z	190.0	20.0
0.321250	63.69	---	117.47	53.77	100.0	Z	190.0	20.0

EUT Information

EUT Name:	3 IN 1 WIRELESS CHARGING STAND
Model:	#03170
Test Mode:	Phone wireless charging
Order No/Sample No:	168484850/A003720195-001
Test Voltage:	120V/60Hz
Remark:	Temp 22 Humi:52%
Test Standard:	FCC Part 15C
Tested By:	Kei Zhang
Reviewed By:	Terry Yin

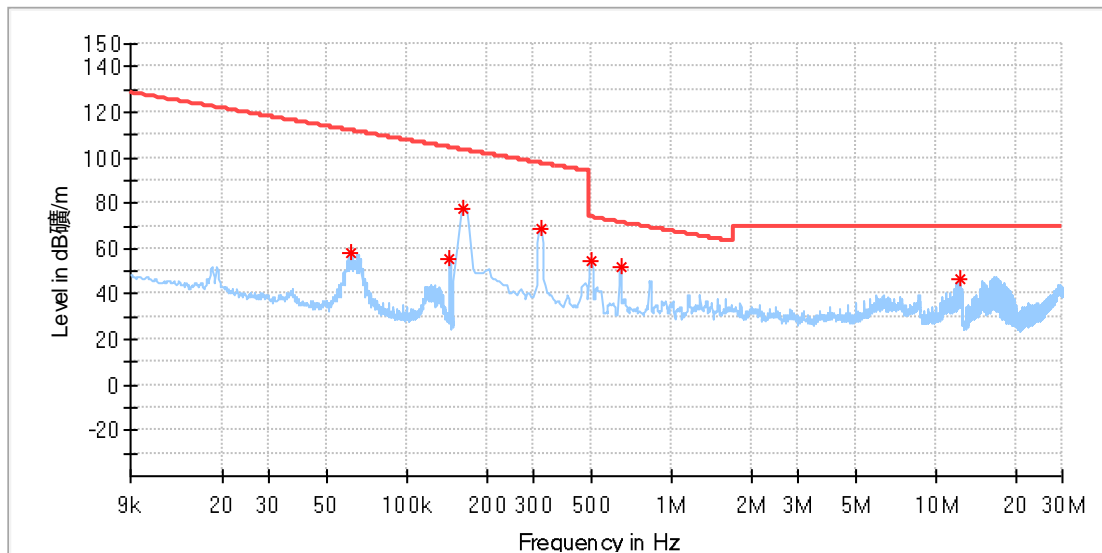


Critical Freqs

Frequency (MHz)	MaxPeak (dBµV/m)	Limit (dBµV/m)	Margin (dB)	Height (cm)	Pol	Azimuth (deg)	Corr. (dB/m)
0.067011	63.21	111.07	47.86	100.0	X	76.0	20.1
0.145468	67.06	104.34	37.28	100.0	X	80.0	20.1
0.163169	81.62	103.35	21.73	100.0	X	0.0	20.1
0.316809	73.03	97.59	24.56	100.0	X	180.0	20.1
0.496787	59.27	73.68	14.42	100.0	X	354.0	20.1
0.641647	56.76	71.47	14.70	100.0	X	180.0	20.1
16.475316	42.95	69.50	26.55	100.0	X	94.0	20.5

EUT Information

EUT Name:	3 IN 1 WIRELESS CHARGING STAND
Model:	#03170
Test Mode:	Phone wireless charging
Order No/Sample No:	168484850/A003720195-001
Test Voltage:	120V/60Hz
Remark:	Temp 22 Humi:52%
Test Standard:	FCC Part 15C
Tested By:	Kei Zhang
Reviewed By:	Terry Yin

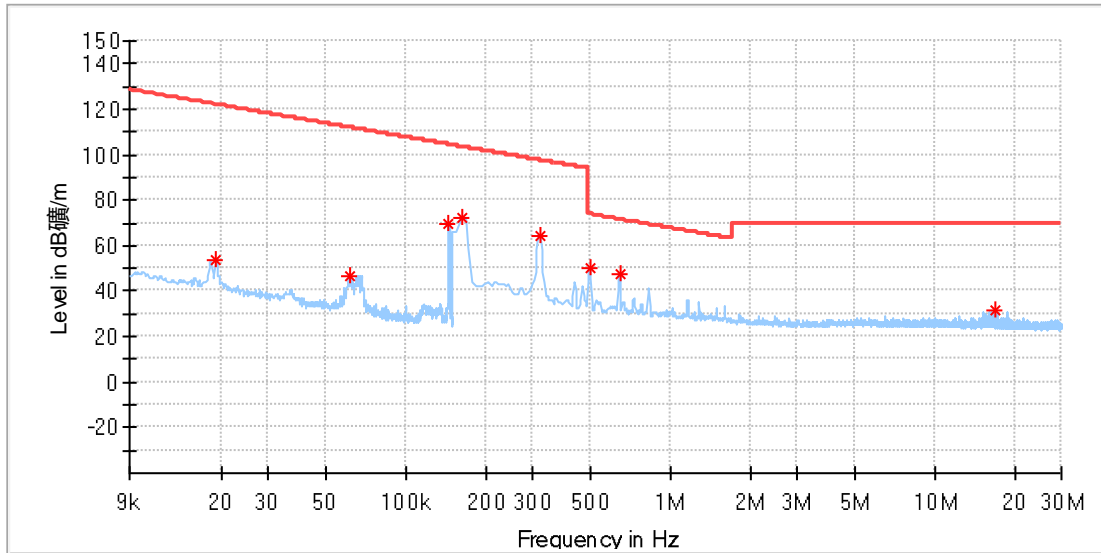


Critical Freqs

Frequency (MHz)	MaxPeak (dBµV/m)	Limit (dBµV/m)	Margin (dB)	Height (cm)	Pol	Azimuth (deg)	Corr. (dB/m)
0.061271	57.98	111.85	53.87	100.0	Y	25.0	20.1
0.145266	55.28	104.36	49.08	100.0	Y	319.0	20.1
0.163169	77.14	103.35	26.21	100.0	Y	261.0	20.1
0.321199	68.95	97.47	28.52	100.0	Y	261.0	20.1
0.496787	54.85	73.68	18.83	100.0	Y	85.0	20.1
0.641647	52.33	71.47	19.13	100.0	Y	82.0	20.1
12.269978	46.67	69.50	22.83	100.0	Y	11.0	20.4

EUT Information

EUT Name:	3 IN 1 WIRELESS CHARGING STAND
Model:	#03170
Test Mode:	Phone wireless charging
Order No/Sample No:	168484850/A003720195-001
Test Voltage:	120V/60Hz
Remark:	Temp 22 Humi:52%
Test Standard:	FCC Part 15C
Tested By:	Kei Zhang
Reviewed By:	Terry Yin

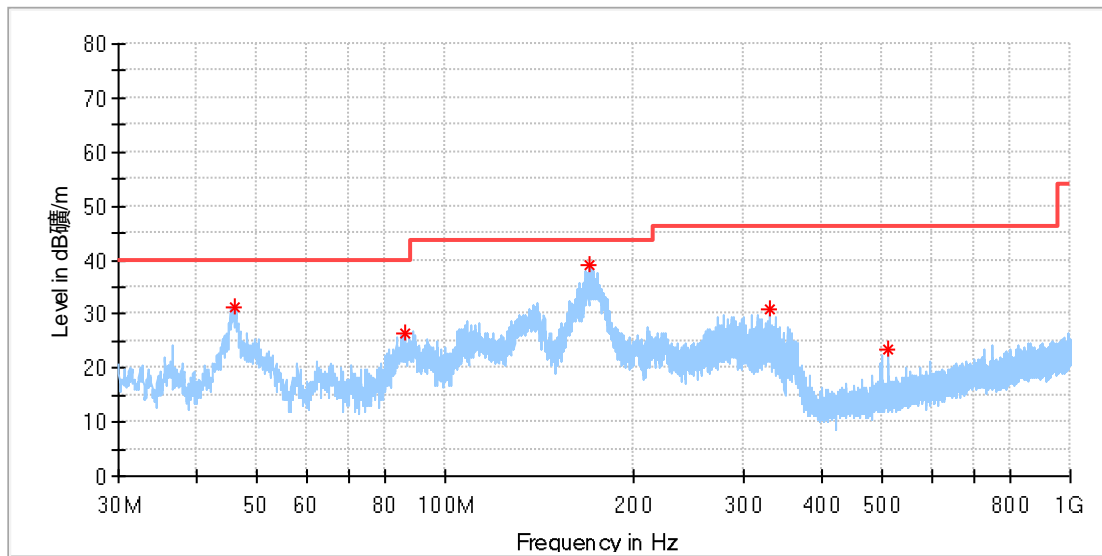


Critical Freqs

Frequency (MHz)	MaxPeak (dBµV/m)	Limit (dBµV/m)	Margin (dB)	Height (cm)	Pol	Azimuth (deg)	Corr. (dB/m)
0.019172	54.06	121.94	67.88	100.0	Z	168.0	20.1
0.061573	47.03	111.81	64.78	100.0	Z	99.0	20.1
0.145367	69.96	104.35	34.39	100.0	Z	0.0	20.1
0.163169	72.67	103.35	30.67	100.0	Z	4.0	20.1
0.321199	64.09	97.47	33.37	100.0	Z	178.0	20.1
0.496787	50.44	73.68	23.24	100.0	Z	8.0	20.1
0.641647	47.85	71.47	23.62	100.0	Z	178.0	20.1
16.905507	31.45	69.50	38.05	100.0	Z	353.0	20.5

EUT Information

EUT Name: 3 IN 1 WIRELESS CHARGING STAND
 Model: #03170
 Test Mode: Phone wireless charging
 Order No/Sample No: 168484850/A003720195-001
 Test Voltage: 120V/60Hz
 Remark: Temp 22 Humi:52%
 Test Standard: FCC Part 15C
 Tested By: Kei Zhang
 Reviewed By: Terry Yin



Critical Freqs

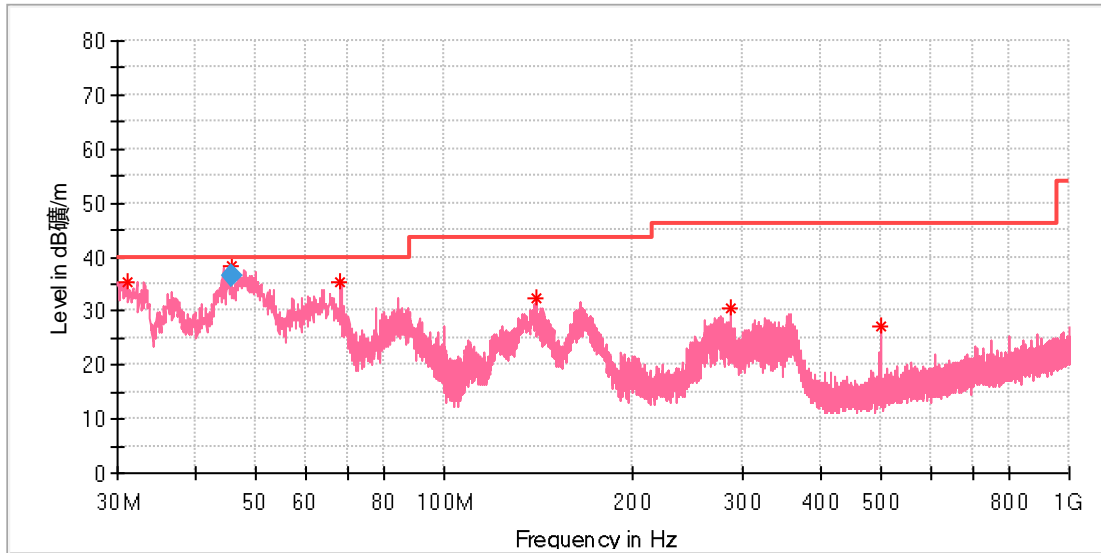
Frequency (MHz)	MaxPeak (dBµV/m)	Limit (dBµV/m)	Margin (dB)	Height (cm)	Pol	Azimuth (deg)	Corr. (dB/m)
45.893077	31.40	40.00	8.60	100.0	H	27.0	-19.0
86.371923	26.59	40.00	13.41	100.0	H	329.0	-22.3
170.165000	39.12	43.50	4.38	100.0	H	93.0	-21.6
330.103077	30.96	46.00	15.04	100.0	H	279.0	-15.7
512.015385	23.30	46.00	22.70	100.0	H	0.0	-12.1

Final Result

Frequency (MHz)	QuasiPeak (dBµV/m)	Limit (dBµV/m)	Margin (dB)	Height (cm)	Pol	Azimuth (deg)	Corr. (dB/m)
---	---	---	---	---		---	---

EUT Information

EUT Name:	3 IN 1 WIRELESS CHARGING STAND
Model:	#03170
Test Mode:	Phone wireless charging
Order No/Sample No:	168484850/A003720195-001
Test Voltage:	120V/60Hz
Remark:	Temp 22 Humi:52%
Test Standard:	FCC Part 15C
Tested By:	Kei Zhang
Reviewed By:	Terry Yin



Critical_Freqs

Frequency (MHz)	MaxPeak (dBµV/m)	Limit (dBµV/m)	Margin (dB)	Height (cm)	Pol	Azimuth (deg)	Corr. (dB/m)
31.044615	35.52	40.00	4.48	100.0	V	323.0	-23.1
45.594615	38.47	40.00	1.53	100.0	V	229.0	-19.0
68.315000	35.49	40.00	4.51	100.0	V	43.0	-21.6
140.318846	32.32	43.50	11.18	100.0	V	213.0	-22.6
288.057308	30.65	46.00	15.35	100.0	V	198.0	-16.9
500.002308	27.00	46.00	19.00	100.0	V	253.0	-12.2

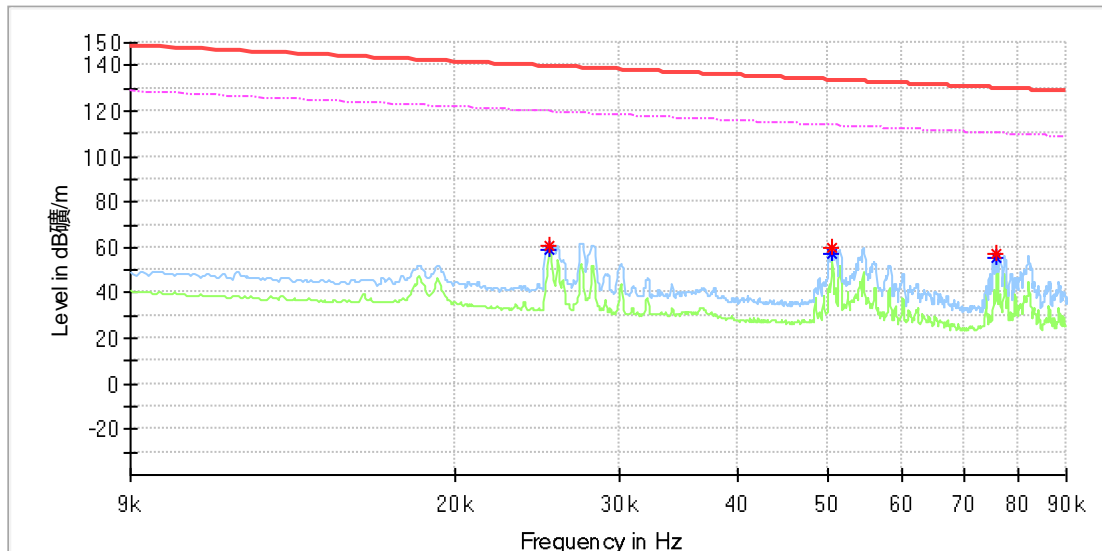
Final_Result

Frequency (MHz)	QuasiPeak (dBµV/m)	Limit (dBµV/m)	Margin (dB)	Height (cm)	Pol	Azimuth (deg)	Corr. (dB/m)
45.594615	36.34	40.00	3.66	105.0	V	224.0	-19.1

Earbuds wireless charging

EUT Information

EUT Name:	3 IN 1 WIRELESS CHARGING STAND
Model:	#03170
Test Mode:	Earbuds wireless charging
Order No/Sample No:	168484850/A003720195-001
Test Voltage:	120V/60Hz
Remark:	Temp 22 Humi:52%
Test Standard:	FCC Part 15C
Tested By:	Kei Zhang
Reviewed By:	Terry Yin

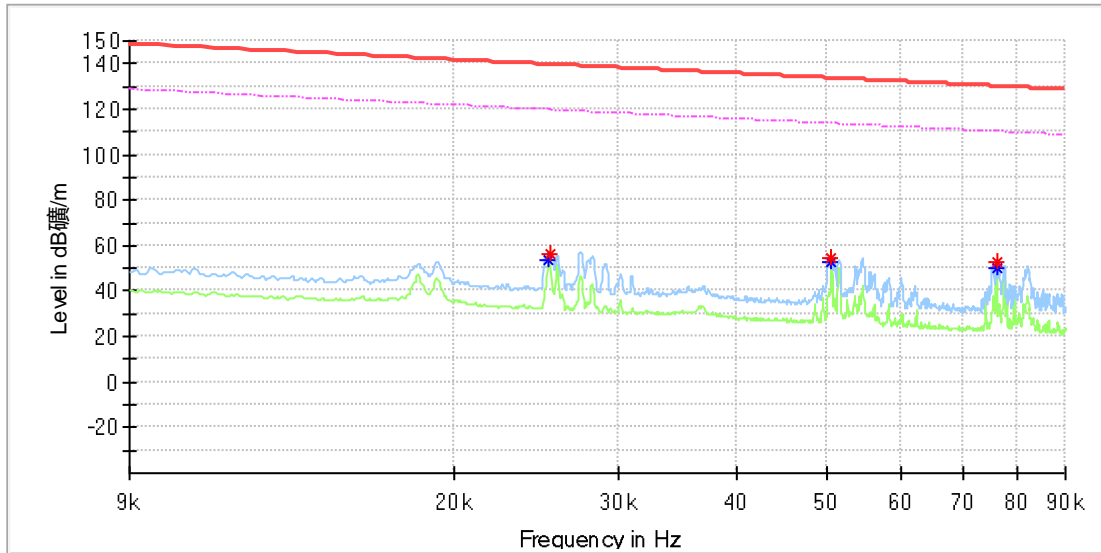


Critical Freqs

Frequency (MHz)	MaxPeak (dBµV/m)	Average (dBµV/m)	Limit (dBµV/m)	Margin (dB)	Height (cm)	Pol	Azimuth (deg)	Corr. (dB/m)
0.025258	60.79	---	139.54	78.75	100.0	X	77.0	20.0
0.025258	---	59.05	119.54	60.49	100.0	X	77.0	20.0
0.050541	---	57.16	113.52	56.36	100.0	X	77.0	20.0
0.050599	59.53	---	133.51	73.98	100.0	X	77.0	20.0
0.075825	57.29	---	130.00	72.71	100.0	X	77.0	20.0
0.075883	---	55.00	109.99	54.99	100.0	X	77.0	20.0

EUT Information

EUT Name:	3 IN 1 WIRELESS CHARGING STAND
Model:	#03170
Test Mode:	Earbuds wireless charging
Order No/Sample No:	168484850/A003720195-001
Test Voltage:	120V/60Hz
Remark:	Temp 22 Humi:52%
Test Standard:	FCC Part 15C
Tested By:	Kei Zhang
Reviewed By:	Terry Yin

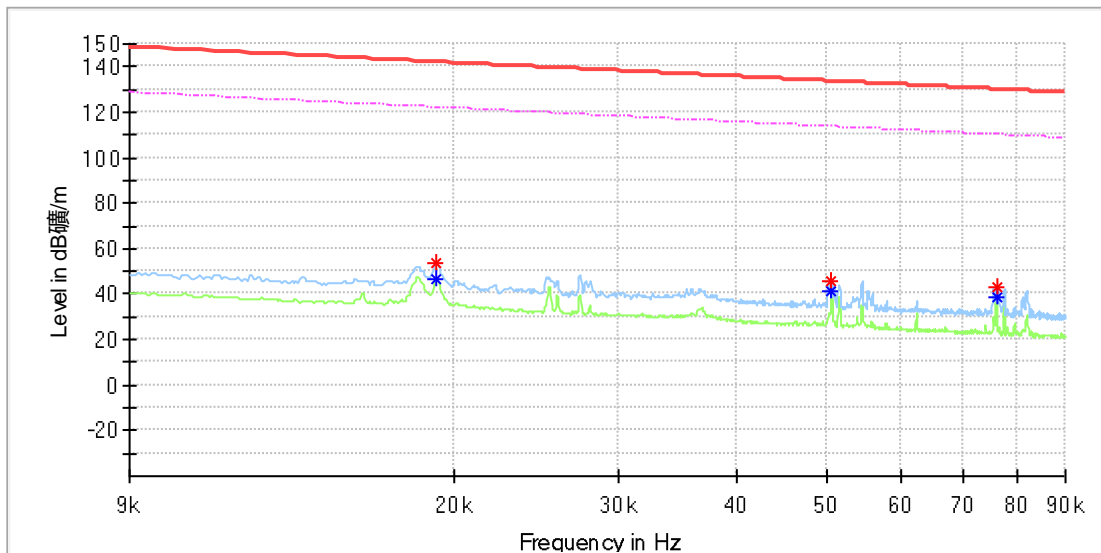


Critical Freqs

Frequency (MHz)	MaxPeak (dBµV/m)	Average (dBµV/m)	Limit (dBµV/m)	Margin (dB)	Height (cm)	Pol	Azimuth (deg)	Corr. (dB/m)
0.025258	---	53.92	119.54	65.63	100.0	Y	35.0	20.0
0.025316	56.34	---	139.52	83.18	100.0	Y	40.0	20.0
0.050599	54.65	---	133.51	78.86	100.0	Y	28.0	20.0
0.050599	---	52.74	113.51	60.77	100.0	Y	28.0	20.0
0.075941	52.41	---	129.99	77.58	100.0	Y	35.0	20.0
0.075941	---	50.12	109.99	59.86	100.0	Y	35.0	20.0

EUT Information

EUT Name:	3 IN 1 WIRELESS CHARGING STAND
Model:	#03170
Test Mode:	Earbuds wireless charging
Order No/Sample No:	168484850/A003720195-001
Test Voltage:	120V/60Hz
Remark:	Temp 22 Humi:52%
Test Standard:	FCC Part 15C
Tested By:	Kei Zhang
Reviewed By:	Terry Yin

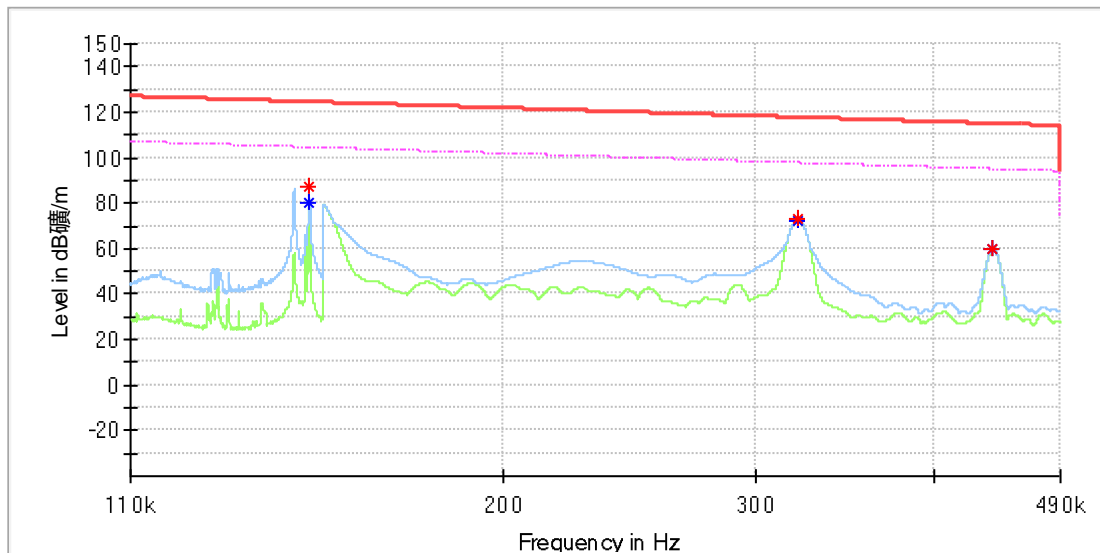


Critical Freqs

Frequency (MHz)	MaxPeak (dBµV/m)	Average (dBµV/m)	Limit (dBµV/m)	Margin (dB)	Height (cm)	Pol	Azimuth (deg)	Corr. (dB/m)
0.019183	53.73	---	141.93	88.20	100.0	Z	26.0	20.0
0.019183	---	46.88	121.93	75.05	100.0	Z	26.0	20.0
0.050599	45.90	---	133.51	87.61	100.0	Z	91.0	20.0
0.050599	---	41.64	113.51	71.87	100.0	Z	91.0	20.0
0.075941	42.67	---	129.99	87.31	100.0	Z	91.0	20.0
0.075941	---	38.92	109.99	71.07	100.0	Z	91.0	20.0

EUT Information

EUT Name:	3 IN 1 WIRELESS CHARGING STAND
Model:	#03170
Test Mode:	Earbuds wireless charging
Order No/Sample No:	168484850/A003720195-001
Test Voltage:	120V/60Hz
Remark:	Temp 22 Humi:52%
Test Standard:	FCC Part 15C
Tested By:	Kei Zhang
Reviewed By:	Terry Yin

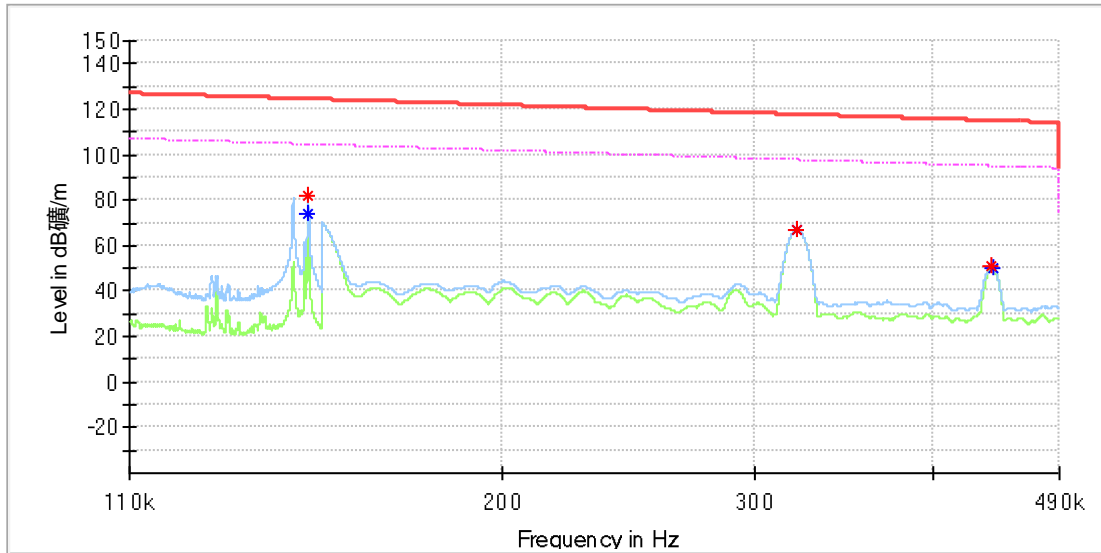


Critical Freqs

Frequency (MHz)	MaxPeak (dBµV/m)	Average (dBµV/m)	Limit (dBµV/m)	Margin (dB)	Height (cm)	Pol	Azimuth (deg)	Corr. (dB/m)
0.146571	---	79.93	104.28	24.35	100.0	X	0.0	20.0
0.146629	87.33	---	124.27	36.95	100.0	X	0.0	20.0
0.321500	72.72	---	117.46	44.74	100.0	X	185.0	20.0
0.321550	---	72.67	97.46	24.79	100.0	X	185.0	20.0
0.439750	59.75	---	114.74	54.99	100.0	X	8.0	20.0
0.439750	---	59.54	94.74	35.20	100.0	X	8.0	20.0

EUT Information

EUT Name: 3 IN 1 WIRELESS CHARGING STAND
 Model: #03170
 Test Mode: Earbuds wireless charging
 Order No/Sample No: 168484850/A003720195-001
 Test Voltage: 120V/60Hz
 Remark: Temp 22 Humi:52%
 Test Standard: FCC Part 15C
 Tested By: Kei Zhang
 Reviewed By: Terry Yin

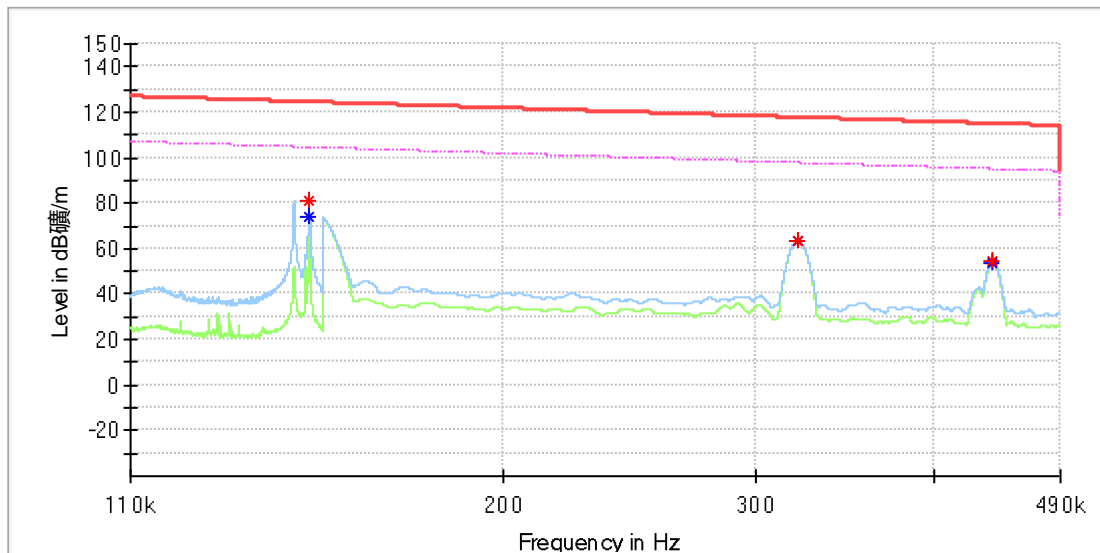


Critical Freqs

Frequency (MHz)	MaxPeak (dBµV/m)	Average (dBµV/m)	Limit (dBµV/m)	Margin (dB)	Height (cm)	Pol	Azimuth (deg)	Corr. (dB/m)
0.146571	81.94	---	124.28	42.34	100.0	Y	98.0	20.0
0.146600	---	74.25	104.28	30.02	100.0	Y	98.0	20.0
0.321550	67.32	---	117.46	50.13	100.0	Y	67.0	20.0
0.321550	---	67.27	97.46	30.19	100.0	Y	67.0	20.0
0.439450	51.09	---	114.75	63.65	100.0	Y	318.0	20.0
0.439950	---	50.17	94.74	44.56	100.0	Y	318.0	20.0

EUT Information

EUT Name:	3 IN 1 WIRELESS CHARGING STAND
Model:	#03170
Test Mode:	Earbuds wireless charging
Order No/Sample No:	168484850/A003720195-001
Test Voltage:	120V/60Hz
Remark:	Temp 22 Humi:52%
Test Standard:	FCC Part 15C
Tested By:	Kei Zhang
Reviewed By:	Terry Yin

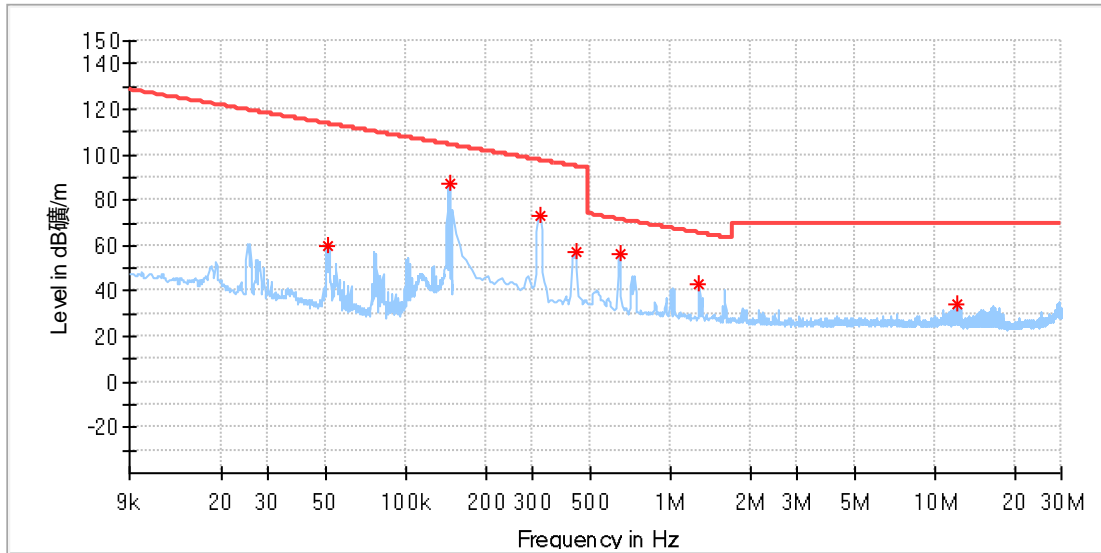


Critical Freqs

Frequency (MHz)	MaxPeak (dBµV/m)	Average (dBµV/m)	Limit (dBµV/m)	Margin (dB)	Height (cm)	Pol	Azimuth (deg)	Corr. (dB/m)
0.146571	81.43	---	124.28	42.85	100.0	Z	2.0	20.0
0.146571	---	73.86	104.28	30.42	100.0	Z	2.0	20.0
0.321350	63.51	---	117.46	53.95	100.0	Z	173.0	20.0
0.321350	---	63.41	97.46	34.05	100.0	Z	173.0	20.0
0.439600	54.13	---	114.74	60.61	100.0	Z	4.0	20.0
0.439600	---	54.01	94.74	40.73	100.0	Z	4.0	20.0

EUT Information

EUT Name:	3 IN 1 WIRELESS CHARGING STAND
Model:	#03170
Test Mode:	Earbuds wireless charging
Order No/Sample No:	168484850/A003720195-001
Test Voltage:	120V/60Hz
Remark:	Temp 22 Humi:52%
Test Standard:	FCC Part 15C
Tested By:	Kei Zhang
Reviewed By:	Terry Yin

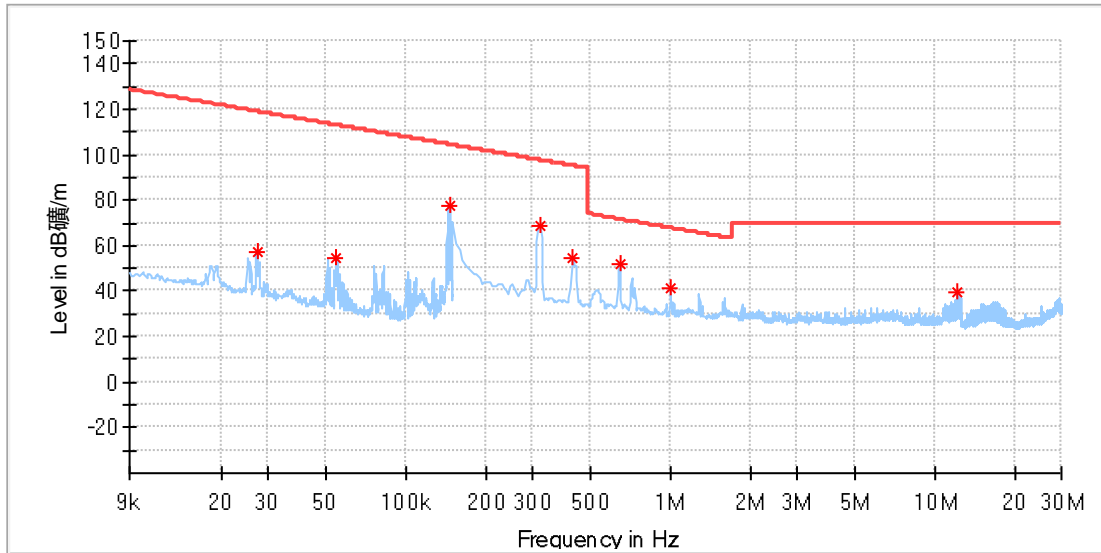


Critical Freqs

Frequency (MHz)	MaxPeak (dBµV/m)	Limit (dBµV/m)	Margin (dB)	Height (cm)	Pol	Azimuth (deg)	Corr. (dB/m)
0.050595	59.47	113.51	54.04	100.0	X	78.0	20.1
0.146676	87.38	104.27	16.89	100.0	X	0.0	20.1
0.321199	72.69	97.47	24.78	100.0	X	190.0	20.1
0.439721	56.97	94.74	37.77	100.0	X	310.0	20.1
0.641647	56.17	71.47	15.30	100.0	X	190.0	20.1
1.282544	43.19	65.47	22.27	100.0	X	216.0	20.1
12.173405	34.02	69.50	35.48	100.0	X	114.0	20.4

EUT Information

EUT Name:	3 IN 1 WIRELESS CHARGING STAND
Model:	#03170
Test Mode:	Earbuds wireless charging
Order No/Sample No:	168484850/A003720195-001
Test Voltage:	120V/60Hz
Remark:	Temp 22 Humi:52%
Test Standard:	FCC Part 15C
Tested By:	Kei Zhang
Reviewed By:	Terry Yin

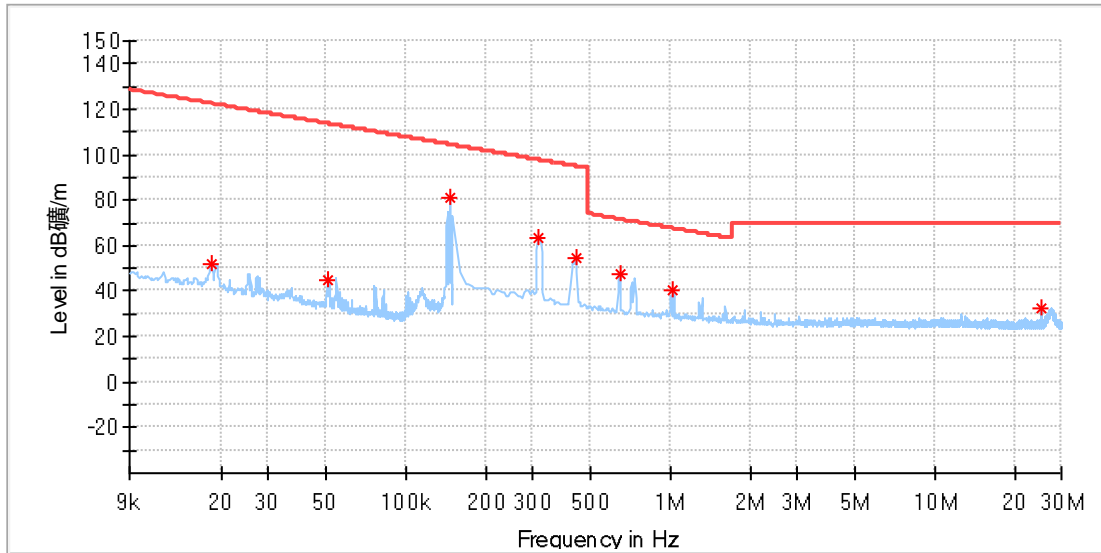


Critical Freqs

Frequency (MHz)	MaxPeak (dBµV/m)	Limit (dBµV/m)	Margin (dB)	Height (cm)	Pol	Azimuth (deg)	Corr. (dB/m)
0.027330	57.11	118.86	61.74	100.0	Y	35.0	20.1
0.054724	54.66	112.83	58.17	100.0	Y	35.0	20.1
0.146676	77.66	104.27	26.61	100.0	Y	148.0	20.1
0.321199	68.45	97.47	29.01	100.0	Y	267.0	20.1
0.426552	54.23	95.00	40.77	100.0	Y	120.0	20.1
0.641647	51.72	71.47	19.75	100.0	Y	257.0	20.1
0.997213	41.34	67.65	26.30	100.0	Y	120.0	20.1
12.169015	39.88	69.50	29.62	100.0	Y	185.0	20.4

EUT Information

EUT Name:	3 IN 1 WIRELESS CHARGING STAND
Model:	#03170
Test Mode:	Earbuds wireless charging
Order No/Sample No:	168484850/A003720195-001
Test Voltage:	120V/60Hz
Remark:	Temp 22 Humi:52%
Test Standard:	FCC Part 15C
Tested By:	Kei Zhang
Reviewed By:	Terry Yin

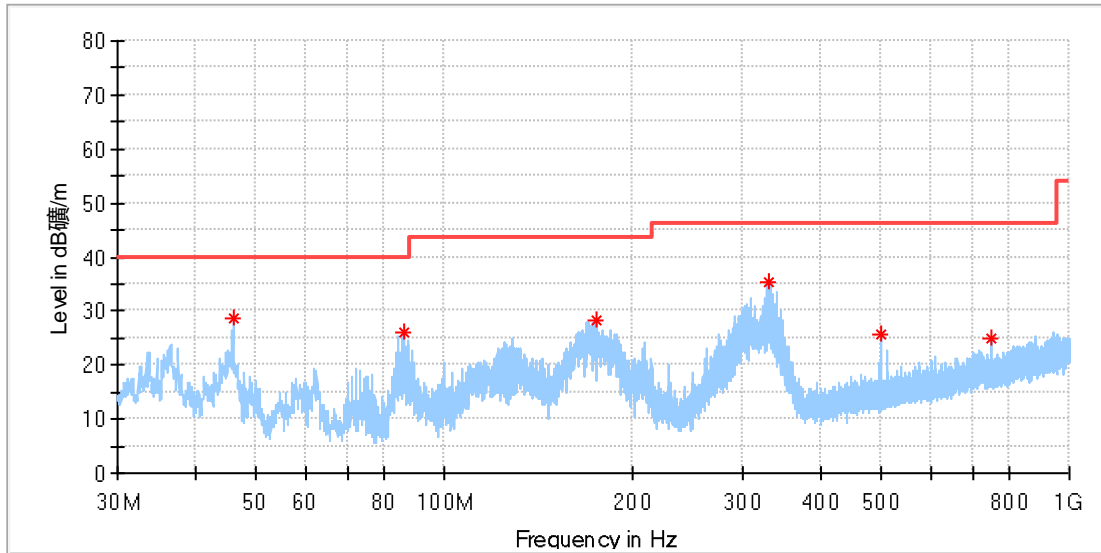


Critical Freqs

Frequency (MHz)	MaxPeak (dBµV/m)	Limit (dBµV/m)	Margin (dB)	Height (cm)	Pol	Azimuth (deg)	Corr. (dB/m)
0.018266	52.28	122.36	70.07	100.0	Z	218.0	20.1
0.050696	45.22	113.49	68.28	100.0	Z	88.0	20.1
0.146475	81.42	104.28	22.86	100.0	Z	0.0	20.1
0.316809	63.56	97.59	34.02	100.0	Z	173.0	20.1
0.439721	54.54	94.74	40.20	100.0	Z	0.0	20.1
0.641647	47.65	71.47	23.81	100.0	Z	173.0	20.1
1.023552	40.47	67.42	26.95	100.0	Z	15.0	20.1
25.000125	32.42	69.50	37.08	100.0	Z	323.0	20.7

EUT Information

EUT Name: 3 IN 1 WIRELESS CHARGING STAND
 Model: #03170
 Test Mode: Earbuds wireless charging
 Order No/Sample No: 168484850/A003720195-001
 Test Voltage: 120V/60Hz
 Remark: Temp 22 Humi:52%
 Test Standard: FCC Part 15C
 Tested By: Kei Zhang
 Reviewed By: Terry Yin



Critical_Freqs

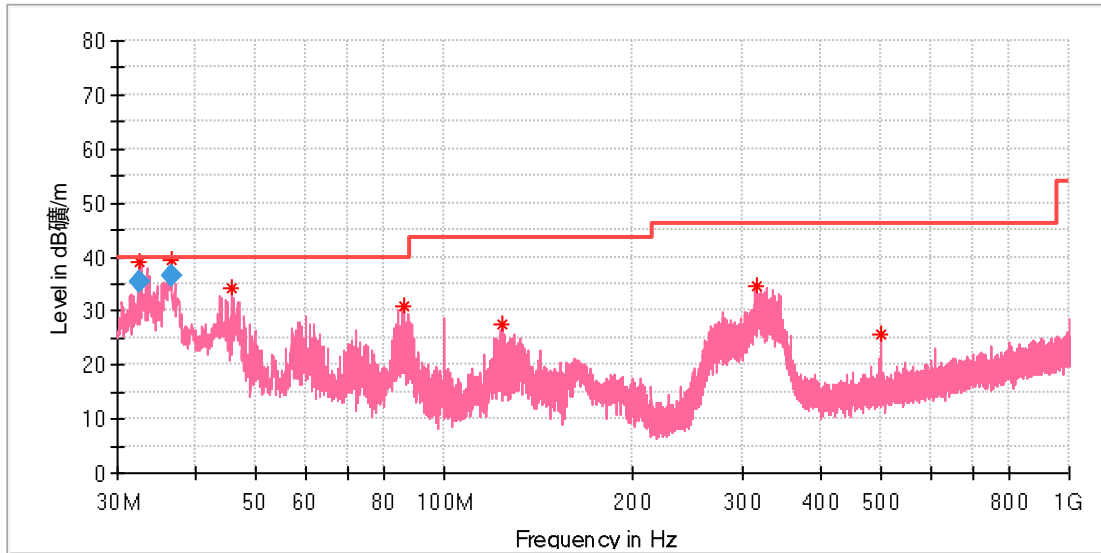
Frequency (MHz)	MaxPeak (dBµV/m)	Limit (dBµV/m)	Margin (dB)	Height (cm)	Pol	Azimuth (deg)	Corr. (dB/m)
45.967692	28.52	40.00	11.48	100.0	H	337.0	-19.0
86.446539	25.90	40.00	14.10	100.0	H	337.0	-22.3
174.679231	28.36	43.50	15.14	100.0	H	76.0	-21.3
330.961154	35.25	46.00	10.75	100.0	H	300.0	-15.7
500.002308	25.69	46.00	20.31	100.0	H	45.0	-12.2
750.038462	25.05	46.00	20.95	100.0	H	309.0	-7.6

Final_Result

Frequency (MHz)	QuasiPeak (dBµV/m)	Limit (dBµV/m)	Margin (dB)	Height (cm)	Pol	Azimuth (deg)	Corr. (dB/m)
---	---	---	---	---		---	---

EUT Information

EUT Name: 3 IN 1 WIRELESS CHARGING STAND
 Model: #03170
 Test Mode: Earbuds wireless charging
 Order No/Sample No: 168484850/A003720195-001
 Test Voltage: 120V/60Hz
 Remark: Temp 22 Humi:52%
 Test Standard: FCC Part 15C
 Tested By: Kei Zhang
 Reviewed By: Terry Yin



Critical_Freqs

Frequency (MHz)	MaxPeak (dBµV/m)	Limit (dBµV/m)	Margin (dB)	Height (cm)	Pol	Azimuth (deg)	Corr. (dB/m)
32.462308	39.01	40.00	0.99	100.0	V	209.0	-22.9
36.603462	39.55	40.00	0.45	100.0	V	174.0	-21.6
45.631923	34.16	40.00	5.84	100.0	V	174.0	-19.0
86.409231	30.77	40.00	9.23	100.0	V	0.0	-22.3
124.201923	27.53	43.50	15.97	100.0	V	148.0	-21.5
315.180000	34.48	46.00	11.52	100.0	V	108.0	-16.2
500.002308	25.85	46.00	20.15	100.0	V	4.0	-12.2

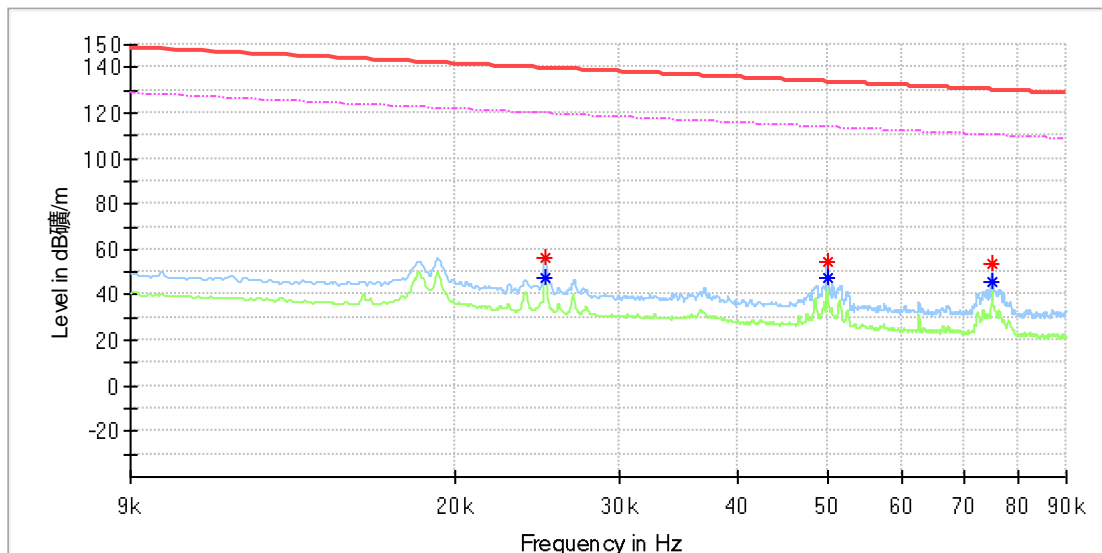
Final_Result

Frequency (MHz)	QuasiPeak (dBµV/m)	Limit (dBµV/m)	Margin (dB)	Height (cm)	Pol	Azimuth (deg)	Corr. (dB/m)
32.462308	35.42	40.00	4.58	105.0	V	204.0	-22.9
36.603462	36.41	40.00	3.59	105.0	V	179.0	-21.7

Watch wireless charging

EUT Information

EUT Name:	3 IN 1 WIRELESS CHARGING STAND
Model:	#03170
Test Mode:	Watch wireless charging
Order No/Sample No:	168484850/A003720195-001
Test Voltage:	120V/60Hz
Remark:	Temp 22 Humi:52%
Test Standard:	FCC Part 15C
Tested By:	Kei Zhang
Reviewed By:	Terry Yin

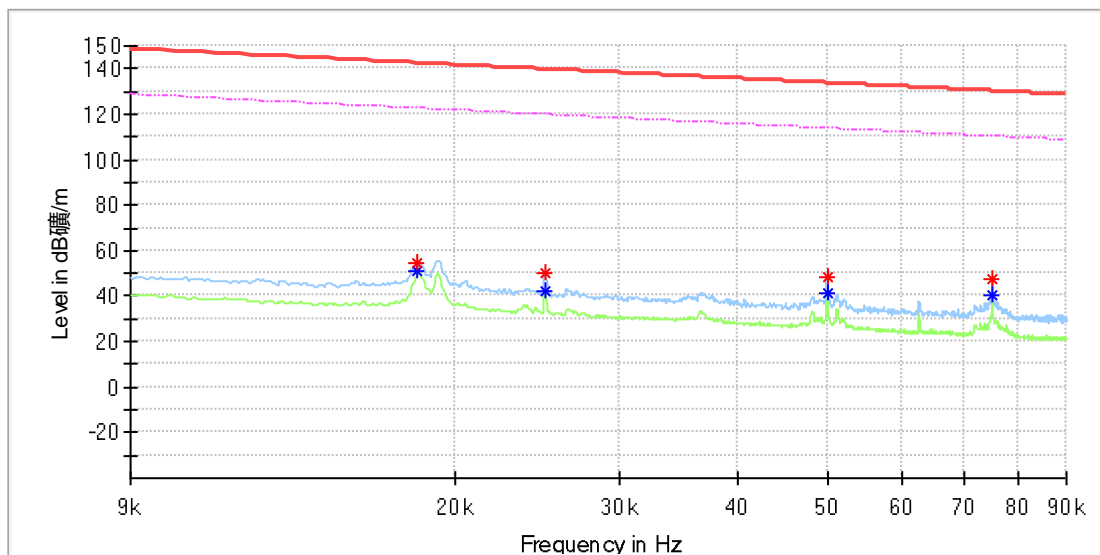


Critical Freqs

Frequency (MHz)	MaxPeak (dBµV/m)	Average (dBµV/m)	Limit (dBµV/m)	Margin (dB)	Height (cm)	Pol	Azimuth (deg)	Corr. (dB/m)
0.024969	56.02	---	139.64	83.62	100.0	X	65.0	20.0
0.024969	---	47.77	119.64	71.87	100.0	X	65.0	20.0
0.049963	54.64	---	133.62	78.98	100.0	X	65.0	20.0
0.049963	---	47.12	113.62	66.50	100.0	X	65.0	20.0
0.074957	53.57	---	130.10	76.53	100.0	X	65.0	20.0
0.074957	---	45.72	110.10	64.37	100.0	X	65.0	20.0

EUT Information

EUT Name:	3 IN 1 WIRELESS CHARGING STAND
Model:	#03170
Test Mode:	Watch wireless charging
Order No/Sample No:	168484850/A003720195-001
Test Voltage:	120V/60Hz
Remark:	Temp 22 Humi:52%
Test Standard:	FCC Part 15C
Tested By:	Kei Zhang
Reviewed By:	Terry Yin

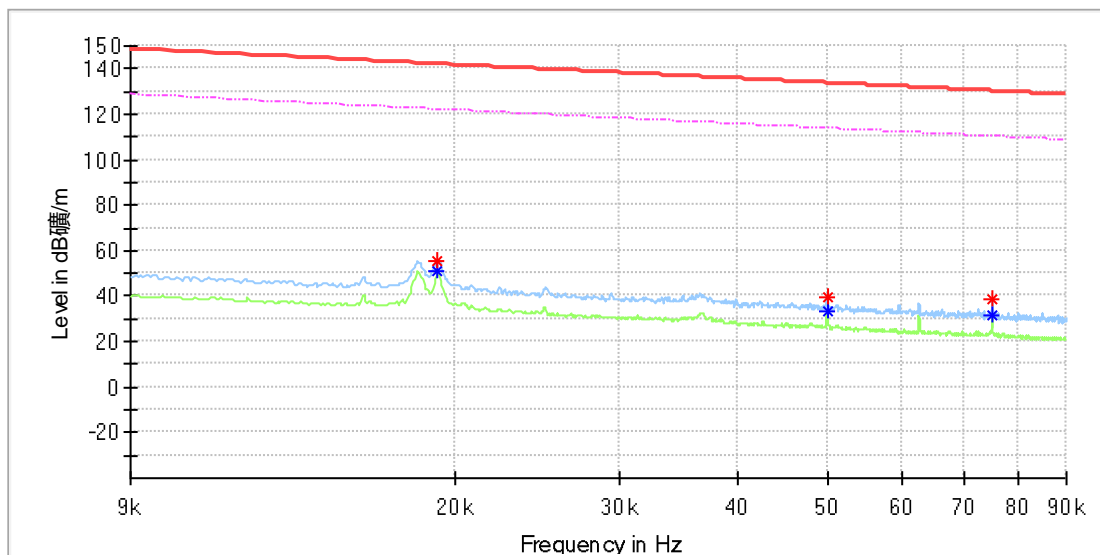


Critical Freqs

Frequency (MHz)	MaxPeak (dBµV/m)	Average (dBµV/m)	Limit (dBµV/m)	Margin (dB)	Height (cm)	Pol	Azimuth (deg)	Corr. (dB/m)
0.018257	54.96	---	142.36	87.40	100.0	Y	281.0	20.0
0.018257	---	50.83	122.36	71.53	100.0	Y	281.0	20.0
0.024969	49.87	---	139.64	89.78	100.0	Y	23.0	20.0
0.024969	---	41.93	119.64	77.71	100.0	Y	23.0	20.0
0.049963	48.26	---	133.62	85.36	100.0	Y	10.0	20.0
0.049963	---	41.20	113.62	72.42	100.0	Y	10.0	20.0
0.075015	47.23	---	130.09	82.87	100.0	Y	16.0	20.0
0.075015	---	40.18	110.09	69.92	100.0	Y	16.0	20.0

EUT Information

EUT Name:	3 IN 1 WIRELESS CHARGING STAND
Model:	#03170
Test Mode:	Watch wireless charging
Order No/Sample No:	168484850/A003720195-001
Test Voltage:	120V/60Hz
Remark:	Temp 22 Humi:52%
Test Standard:	FCC Part 15C
Tested By:	Kei Zhang
Reviewed By:	Terry Yin

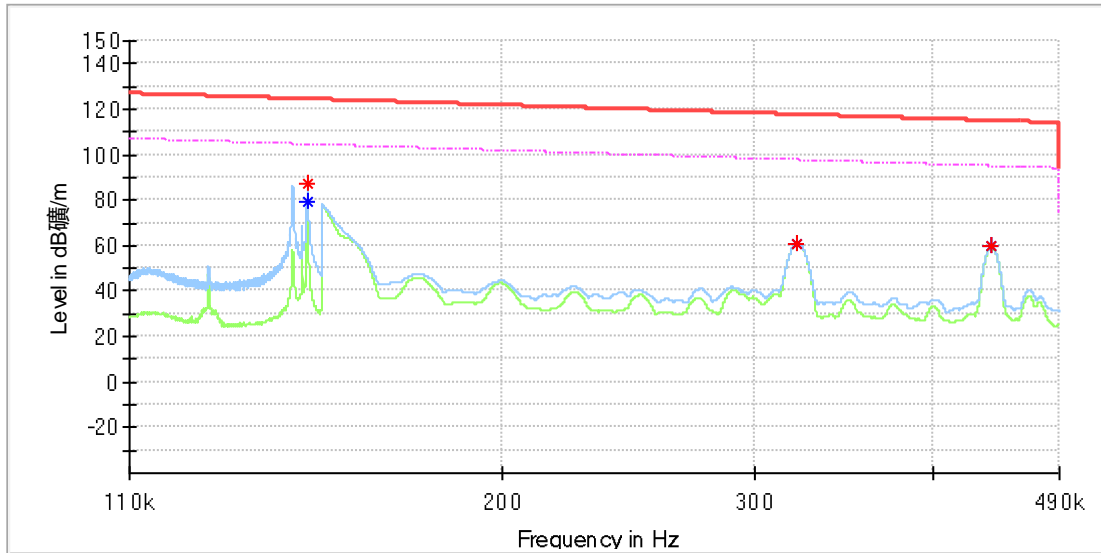


Critical Freqs

Frequency (MHz)	MaxPeak (dBµV/m)	Average (dBµV/m)	Limit (dBµV/m)	Margin (dB)	Height (cm)	Pol	Azimuth (deg)	Corr. (dB/m)
0.019183	55.74	---	141.93	86.19	100.0	Z	228.0	20.0
0.019183	---	50.62	121.93	71.31	100.0	Z	228.0	20.0
0.049963	39.83	---	133.62	93.79	100.0	Z	2.0	20.0
0.049963	---	32.97	113.62	80.65	100.0	Z	2.0	20.0
0.075015	38.60	---	130.09	91.50	100.0	Z	2.0	20.0
0.075015	---	31.35	110.09	78.74	100.0	Z	2.0	20.0

EUT Information

EUT Name:	3 IN 1 WIRELESS CHARGING STAND
Model:	#03170
Test Mode:	Watch wireless charging
Order No/Sample No:	168484850/A003720195-001
Test Voltage:	120V/60Hz
Remark:	Temp 22 Humi:52%
Test Standard:	FCC Part 15C
Tested By:	Kei Zhang
Reviewed By:	Terry Yin

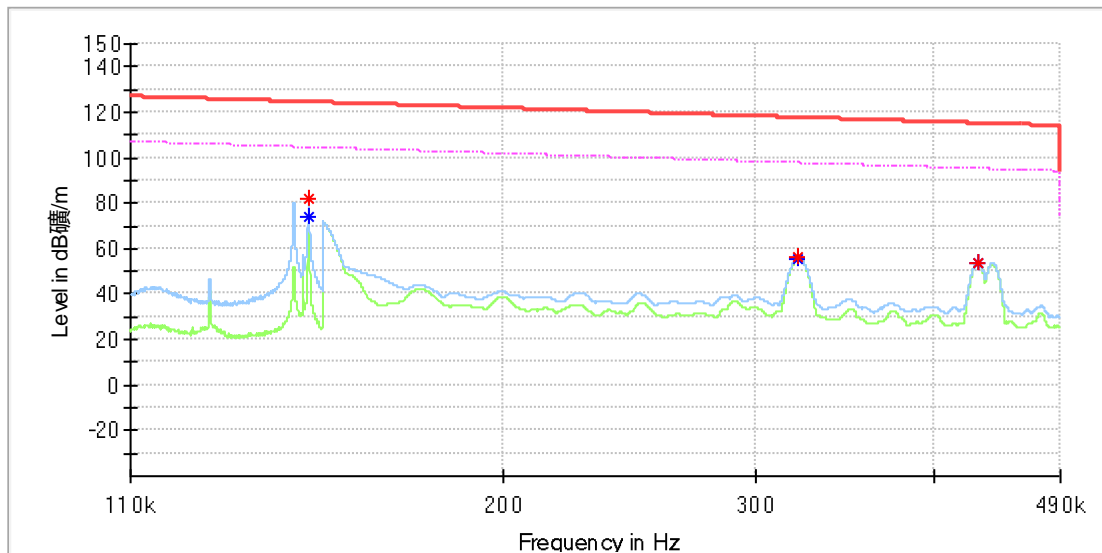


Critical Freqs

Frequency (MHz)	MaxPeak (dBµV/m)	Average (dBµV/m)	Limit (dBµV/m)	Margin (dB)	Height (cm)	Pol	Azimuth (deg)	Corr. (dB/m)
0.146457	87.36	---	124.28	36.92	100.0	X	1.0	20.0
0.146457	---	79.70	104.28	24.58	100.0	X	1.0	20.0
0.321650	61.12	---	117.45	56.33	100.0	X	182.0	20.0
0.321650	---	60.96	97.45	36.49	100.0	X	182.0	20.0
0.439300	---	59.54	94.75	35.21	100.0	X	15.0	20.0
0.439350	59.65	---	114.75	55.10	100.0	X	15.0	20.0

EUT Information

EUT Name: 3 IN 1 WIRELESS CHARGING STAND
 Model: #03170
 Test Mode: Watch wireless charging
 Order No/Sample No: 168484850/A003720195-001
 Test Voltage: 120V/60Hz
 Remark: Temp 22 Humi:52%
 Test Standard: FCC Part 15C
 Tested By: Kei Zhang
 Reviewed By: Terry Yin

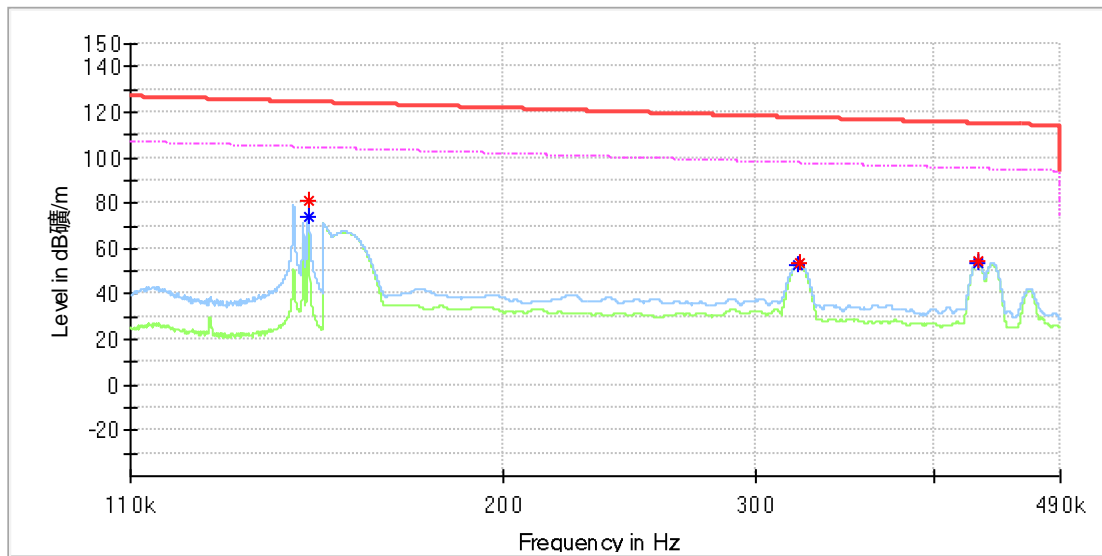


Critical Freqs

Frequency (MHz)	MaxPeak (dBµV/m)	Average (dBµV/m)	Limit (dBµV/m)	Margin (dB)	Height (cm)	Pol	Azimuth (deg)	Corr. (dB/m)
0.146486	81.96	---	124.28	42.32	100.0	Y	266.0	20.0
0.146486	---	74.20	104.28	30.09	100.0	Y	266.0	20.0
0.321700	55.95	---	117.45	61.50	100.0	Y	263.0	20.0
0.321750	---	55.65	97.45	41.80	100.0	Y	263.0	20.0
0.429050	---	53.55	94.95	41.41	100.0	Y	62.0	20.0
0.429150	53.79	---	114.95	61.16	100.0	Y	62.0	20.0

EUT Information

EUT Name: 3 IN 1 WIRELESS CHARGING STAND
 Model: #03170
 Test Mode: Watch wireless charging
 Order No/Sample No: 168484850/A003720195-001
 Test Voltage: 120V/60Hz
 Remark: Temp 22 Humi:52%
 Test Standard: FCC Part 15C
 Tested By: Kei Zhang
 Reviewed By: Terry Yin

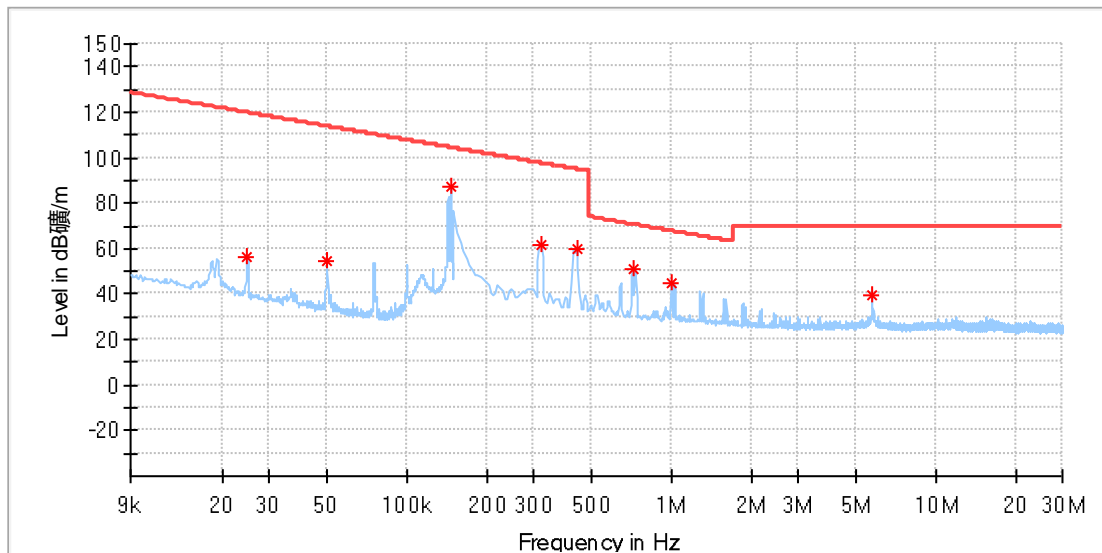


Critical Freqs

Frequency (MHz)	MaxPeak (dBµV/m)	Average (dBµV/m)	Limit (dBµV/m)	Margin (dB)	Height (cm)	Pol	Azimuth (deg)	Corr. (dB/m)
0.146486	81.44	---	124.28	42.84	100.0	Z	14.0	20.0
0.146486	---	73.64	104.28	30.64	100.0	Z	14.0	20.0
0.321750	---	53.13	97.45	44.32	100.0	Z	195.0	20.0
0.322000	53.73	---	117.45	63.72	100.0	Z	195.0	20.0
0.428950	54.31	---	114.96	60.65	100.0	Z	33.0	20.0
0.429000	---	54.01	94.95	40.95	100.0	Z	33.0	20.0

EUT Information

EUT Name:	3 IN 1 WIRELESS CHARGING STAND
Model:	#03170
Test Mode:	Watch wireless charging
Order No/Sample No:	168484850/A003720195-001
Test Voltage:	120V/60Hz
Remark:	Temp 22 Humi:52%
Test Standard:	FCC Part 15C
Tested By:	Kei Zhang
Reviewed By:	Terry Yin

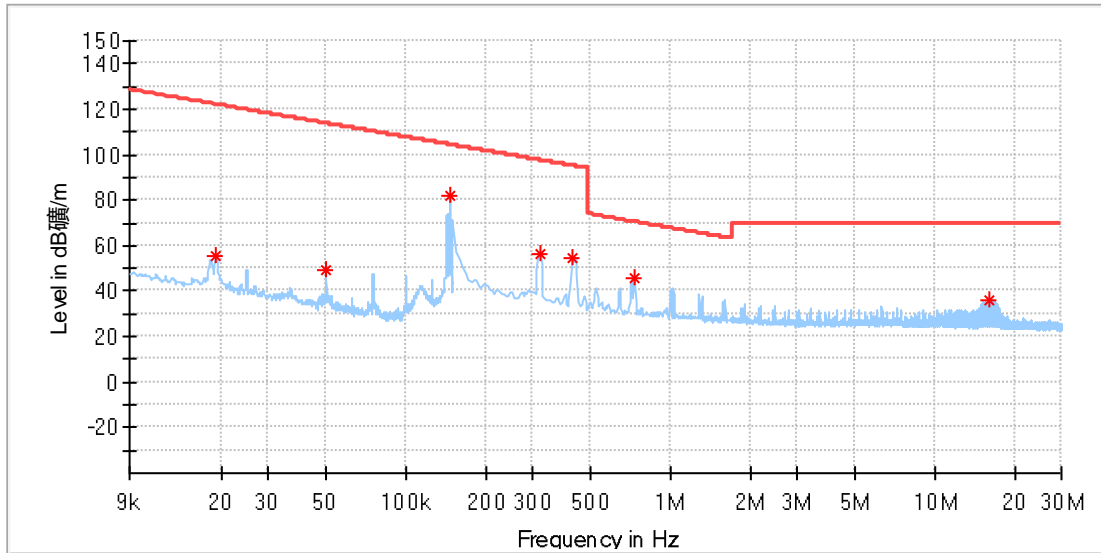


Critical Freqs

Frequency (MHz)	MaxPeak (dBµV/m)	Limit (dBµV/m)	Margin (dB)	Height (cm)	Pol	Azimuth (deg)	Corr. (dB/m)
0.024913	56.05	119.66	63.61	100.0	X	73.0	20.1
0.049890	54.53	113.63	59.10	100.0	X	73.0	20.1
0.146475	87.38	104.28	16.90	100.0	X	5.0	20.1
0.321199	61.46	97.47	36.00	100.0	X	181.0	20.1
0.439721	59.80	94.74	34.94	100.0	X	18.0	20.1
0.711883	50.85	70.57	19.71	100.0	X	346.0	20.1
0.997213	45.07	67.65	22.57	100.0	X	346.0	20.1
5.733706	39.78	69.50	29.72	100.0	X	291.0	20.3

EUT Information

EUT Name:	3 IN 1 WIRELESS CHARGING STAND
Model:	#03170
Test Mode:	Watch wireless charging
Order No/Sample No:	168484850/A003720195-001
Test Voltage:	120V/60Hz
Remark:	Temp 22 Humi:52%
Test Standard:	FCC Part 15C
Tested By:	Kei Zhang
Reviewed By:	Terry Yin

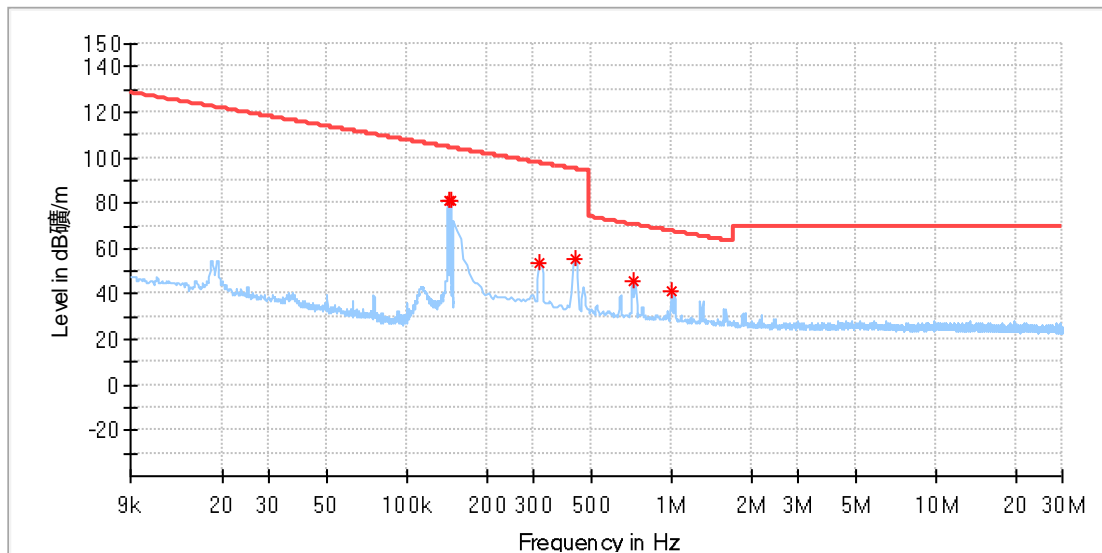


Critical Freqs

Frequency (MHz)	MaxPeak (dBµV/m)	Limit (dBµV/m)	Margin (dB)	Height (cm)	Pol	Azimuth (deg)	Corr. (dB/m)
0.019071	55.45	121.98	66.53	100.0	Y	347.0	20.1
0.049991	48.98	113.62	64.63	100.0	Y	41.0	20.1
0.146475	82.01	104.28	22.27	100.0	Y	279.0	20.1
0.321199	56.12	97.47	41.35	100.0	Y	267.0	20.1
0.426552	54.86	95.00	40.14	100.0	Y	110.0	20.1
0.729441	45.82	70.35	24.54	100.0	Y	85.0	20.1
16.106581	35.92	69.50	33.58	100.0	Y	15.0	20.5

EUT Information

EUT Name:	3 IN 1 WIRELESS CHARGING STAND
Model:	#03170
Test Mode:	Watch wireless charging
Order No/Sample No:	168484850/A003720195-001
Test Voltage:	120V/60Hz
Remark:	Temp 22 Humi:52%
Test Standard:	FCC Part 15C
Tested By:	Kei Zhang
Reviewed By:	Terry Yin

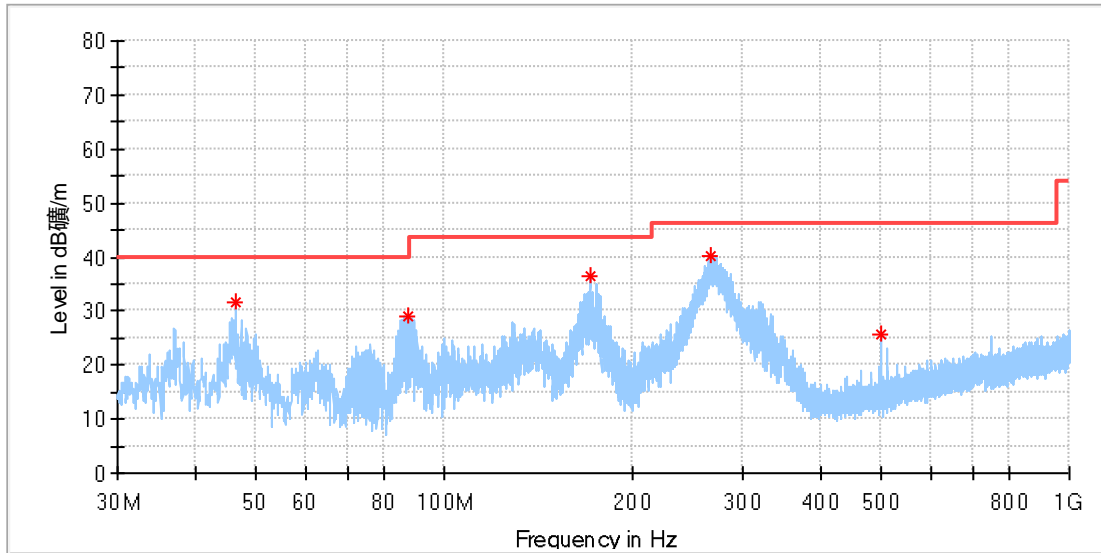


Critical Freqs

Frequency (MHz)	MaxPeak (dBµV/m)	Limit (dBµV/m)	Margin (dB)	Height (cm)	Pol	Azimuth (deg)	Corr. (dB/m)
0.143051	80.79	104.49	23.70	100.0	Z	33.0	20.1
0.146475	81.43	104.28	22.85	100.0	Z	20.0	20.1
0.316809	53.55	97.59	44.04	100.0	Z	196.0	20.1
0.435331	55.72	94.83	39.10	100.0	Z	22.0	20.1
0.711883	45.83	70.57	24.74	100.0	Z	7.0	20.1
0.997213	41.17	67.65	26.48	100.0	Z	7.0	20.1

EUT Information

EUT Name: 3 IN 1 WIRELESS CHARGING STAND
 Model: #03170
 Test Mode: Watch wireless charging
 Order No/Sample No: 168484850/A003720195-001
 Test Voltage: 120V/60Hz
 Remark: Temp 22 Humi:52%
 Test Standard: FCC Part 15C
 Tested By: Kei Zhang
 Reviewed By: Terry Yin



Critical Freqs

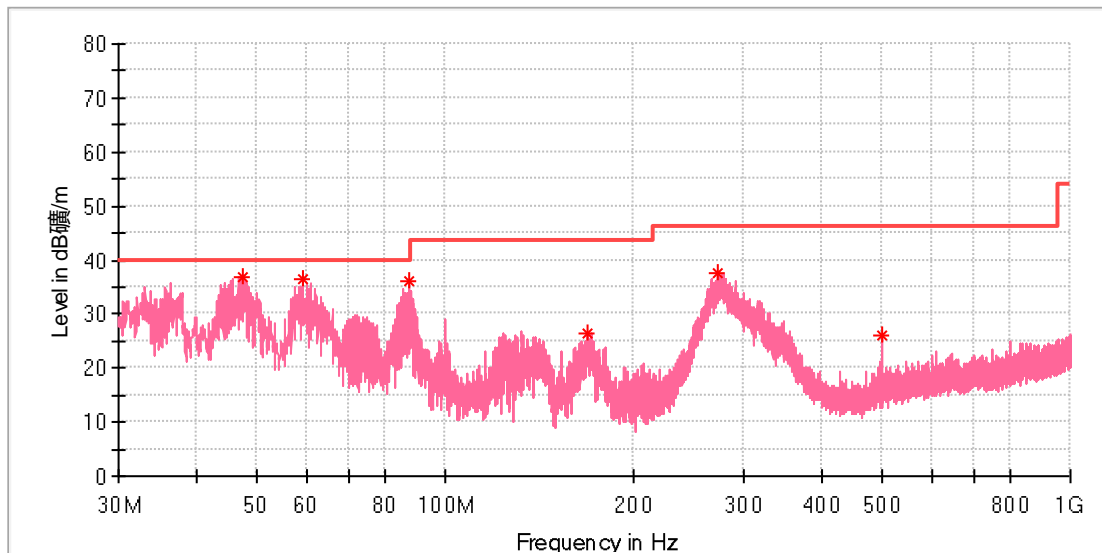
Frequency (MHz)	MaxPeak (dBµV/m)	Limit (dBµV/m)	Margin (dB)	Height (cm)	Pol	Azimuth (deg)	Corr. (dB/m)
46.340769	31.71	40.00	8.29	100.0	H	315.0	-18.9
87.230000	29.19	40.00	10.81	100.0	H	334.0	-22.1
170.761923	36.56	43.50	6.94	100.0	H	82.0	-21.5
266.754615	40.27	46.00	5.73	100.0	H	237.0	-17.3
500.002308	25.55	46.00	20.45	100.0	H	237.0	-12.2

Final Result

Frequency (MHz)	QuasiPeak (dBµV/m)	Limit (dBµV/m)	Margin (dB)	Height (cm)	Pol	Azimuth (deg)	Corr. (dB/m)
---	---	---	---	---		---	---

EUT Information

EUT Name: 3 IN 1 WIRELESS CHARGING STAND
 Model: #03170
 Test Mode: Watch wireless charging
 Order No/Sample No: 168484850/A003720195-001
 Test Voltage: 120V/60Hz
 Remark: Temp 22 Humi:52%
 Test Standard: FCC Part 15C
 Tested By: Kei Zhang
 Reviewed By: Terry Yin



Critical_Freqs

Frequency (MHz)	MaxPeak (dBµV/m)	Limit (dBµV/m)	Margin (dB)	Height (cm)	Pol	Azimuth (deg)	Corr. (dB/m)
47.273462	36.92	40.00	3.08	100.0	V	30.0	-18.8
59.100000	36.46	40.00	3.54	100.0	V	0.0	-19.2
87.379231	36.14	40.00	3.86	100.0	V	344.0	-22.0
168.971154	26.42	43.50	17.08	100.0	V	107.0	-21.6
272.574615	37.54	46.00	8.46	100.0	V	202.0	-17.2
500.002308	26.23	46.00	19.77	100.0	V	309.0	-12.2

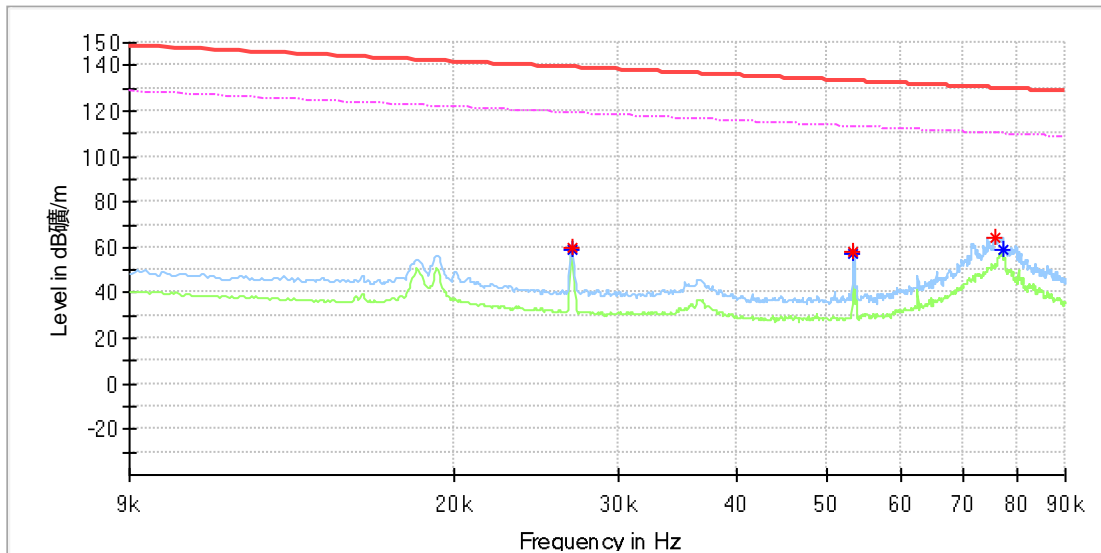
Final_Result

Frequency (MHz)	QuasiPeak (dBµV/m)	Limit (dBµV/m)	Margin (dB)	Height (cm)	Pol	Azimuth (deg)	Corr. (dB/m)
---	---	---	---	---		---	---

Phone + Earbuds + Watch wireless charging

EUT Information

EUT Name: 3 IN 1 WIRELESS CHARGING STAND
 Model: #03170
 Test Mode: Phone + Earbuds + Watch wireless charging
 Order No/Sample No: 168484850/A003720195-001
 Test Voltage: 120V/60Hz
 Remark: Temp 22 Humi:52%
 Test Standard: FCC Part 15C
 Tested By: Kei Zhang
 Reviewed By: Terry Yin

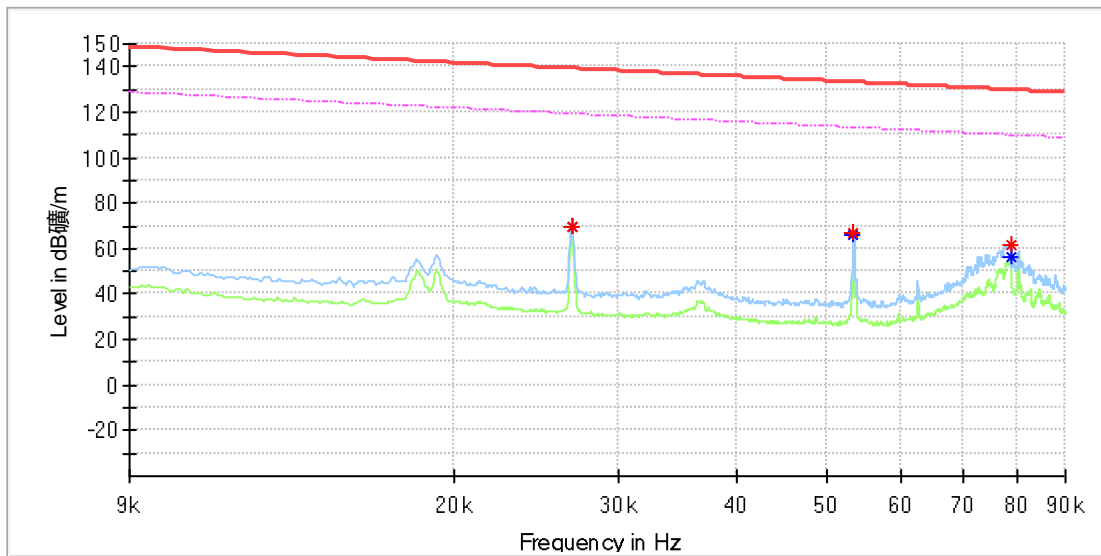


Critical Freqs

Frequency (MHz)	MaxPeak (dBµV/m)	Average (dBµV/m)	Limit (dBµV/m)	Margin (dB)	Height (cm)	Pol	Azimuth (deg)	Corr. (dB/m)
0.026704	60.25	---	139.06	78.81	100.0	X	326.0	20.0
0.026704	---	59.14	119.06	59.91	100.0	X	326.0	20.0
0.053434	58.26	---	133.04	74.77	100.0	X	163.0	20.0
0.053434	---	57.17	113.04	55.87	100.0	X	163.0	20.0
0.075594	64.58	---	130.03	65.44	100.0	X	83.0	20.0
0.077098	---	59.40	109.85	50.45	100.0	X	76.0	20.0

EUT Information

EUT Name:	3 IN 1 WIRELESS CHARGING STAND
Model:	#03170
Test Mode:	Phone + Earbuds + Watch wireless charging
Order No/Sample No:	168484850/A003720195-001
Test Voltage:	120V/60Hz
Remark:	Temp 22 Humi:52%
Test Standard:	FCC Part 15C
Tested By:	Kei Zhang
Reviewed By:	Terry Yin

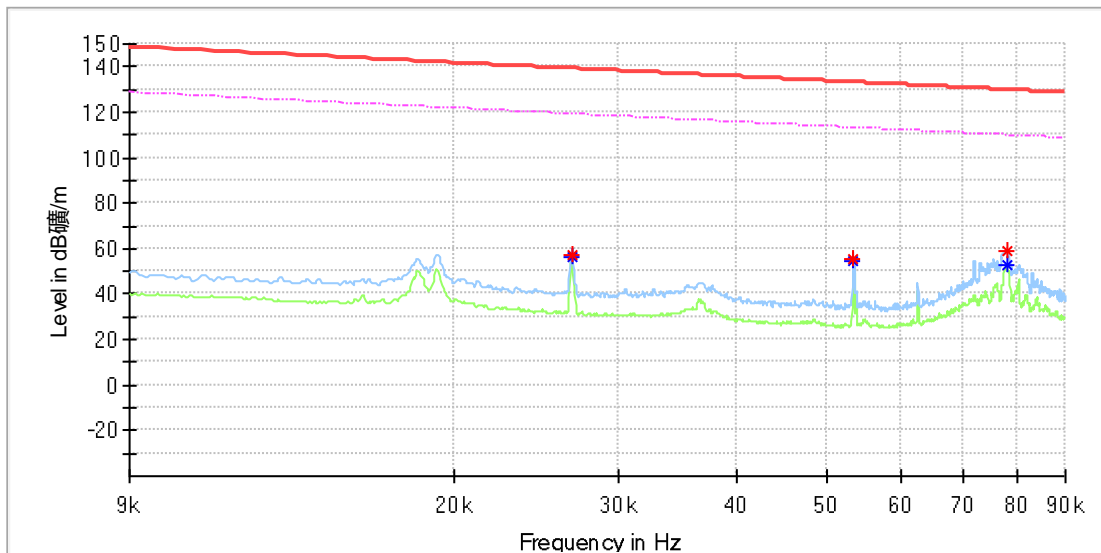


Critical Freqs

Frequency (MHz)	MaxPeak (dBµV/m)	Average (dBµV/m)	Limit (dBµV/m)	Margin (dB)	Height (cm)	Pol	Azimuth (deg)	Corr. (dB/m)
0.026704	69.61	---	139.06	69.45	100.0	Y	160.0	20.0
0.026704	---	69.18	119.06	49.88	100.0	Y	160.0	20.0
0.053434	66.58	---	133.04	66.46	100.0	Y	207.0	20.0
0.053434	---	65.97	113.04	47.06	100.0	Y	207.0	20.0
0.078602	61.61	---	129.69	68.08	100.0	Y	36.0	20.0
0.078602	---	56.25	109.69	53.44	100.0	Y	36.0	20.0

EUT Information

EUT Name:	3 IN 1 WIRELESS CHARGING STAND
Model:	#03170
Test Mode:	Phone + Earbuds + Watch wireless charging
Order No/Sample No:	168484850/A003720195-001
Test Voltage:	120V/60Hz
Remark:	Temp 22 Humi:52%
Test Standard:	FCC Part 15C
Tested By:	Kei Zhang
Reviewed By:	Terry Yin

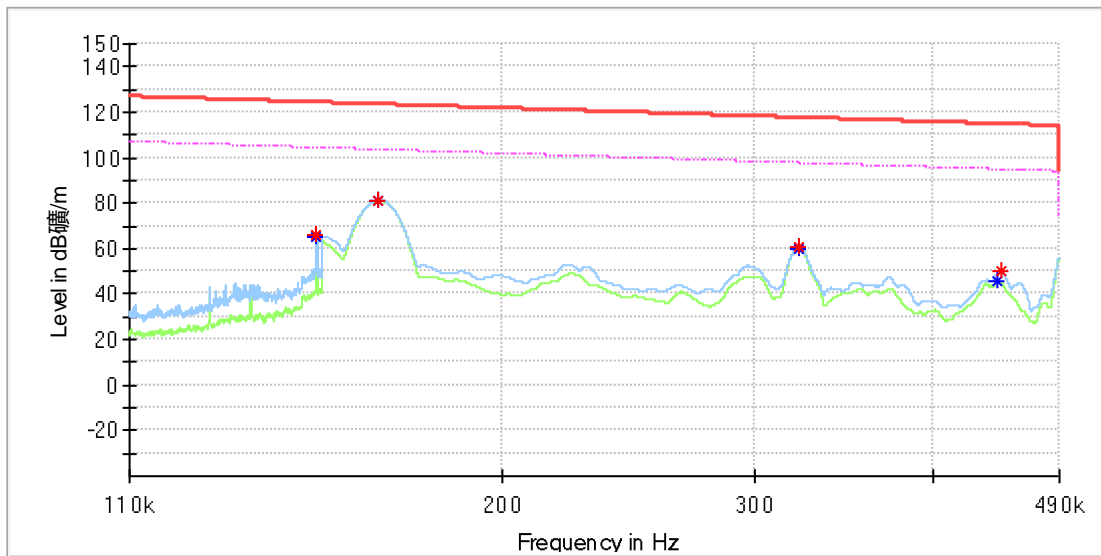


Critical Freqs

Frequency (MHz)	MaxPeak (dBµV/m)	Average (dBµV/m)	Limit (dBµV/m)	Margin (dB)	Height (cm)	Pol	Azimuth (deg)	Corr. (dB/m)
0.026704	57.56	---	139.06	81.50	100.0	Z	342.0	20.0
0.026704	---	56.60	119.06	62.46	100.0	Z	342.0	20.0
0.053434	55.59	---	133.04	77.44	100.0	Z	174.0	20.0
0.053434	---	54.71	113.04	58.33	100.0	Z	174.0	20.0
0.077908	58.97	---	129.76	70.79	100.0	Z	82.0	20.0
0.077966	---	53.08	109.76	56.68	100.0	Z	88.0	20.0

EUT Information

EUT Name: 3 IN 1 WIRELESS CHARGING STAND
 Model: #03170
 Test Mode: Phone + Earbuds + Watch wireless charging
 Order No/Sample No: 168484850/A003720195-001
 Test Voltage: 120V/60Hz
 Remark: Temp 22 Humi:52%
 Test Standard: FCC Part 15C
 Tested By: Kei Zhang
 Reviewed By: Terry Yin

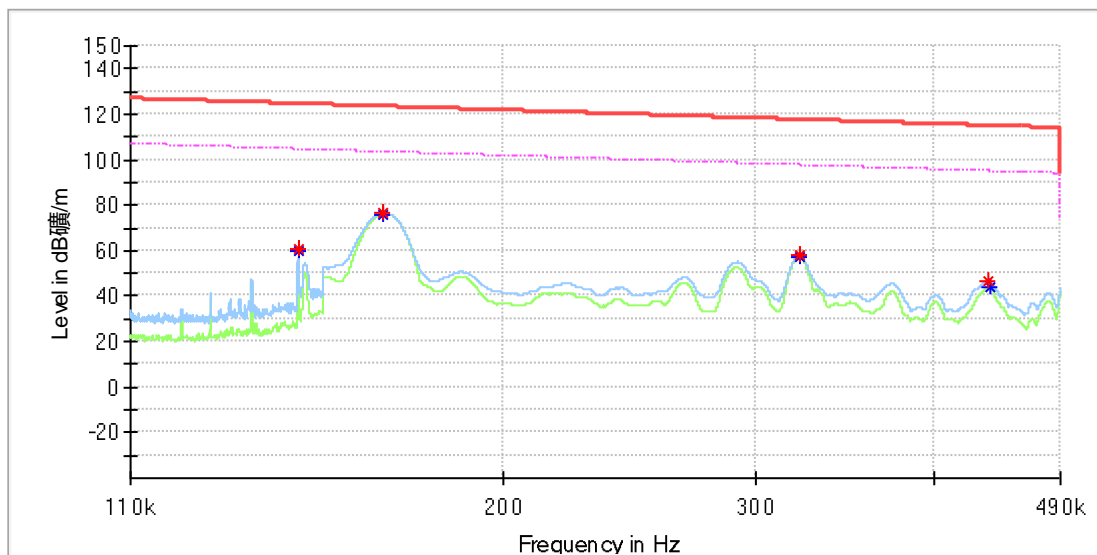


Critical Freqs

Frequency (MHz)	MaxPeak (dBµV/m)	Average (dBµV/m)	Limit (dBµV/m)	Margin (dB)	Height (cm)	Pol	Azimuth (deg)	Corr. (dB/m)
0.148486	65.87	---	124.17	58.30	100.0	X	78.0	20.0
0.148543	---	64.83	104.16	39.33	100.0	X	97.0	20.0
0.163950	81.19	---	123.30	42.11	100.0	X	1.0	20.0
0.164100	---	81.05	103.30	22.24	100.0	X	1.0	20.0
0.322000	---	60.19	97.45	37.26	100.0	X	191.0	20.0
0.322250	60.48	---	117.44	56.95	100.0	X	191.0	20.0
0.443750	---	45.50	94.66	49.16	100.0	X	73.0	20.0
0.446050	50.23	---	114.62	64.39	100.0	X	73.0	20.0

EUT Information

EUT Name: 3 IN 1 WIRELESS CHARGING STAND
 Model: #03170
 Test Mode: Phone + Earbuds + Watch wireless charging
 Order No/Sample No: 168484850/A003720195-001
 Test Voltage: 120V/60Hz
 Remark: Temp 22 Humi:52%
 Test Standard: FCC Part 15C
 Tested By: Kei Zhang
 Reviewed By: Terry Yin

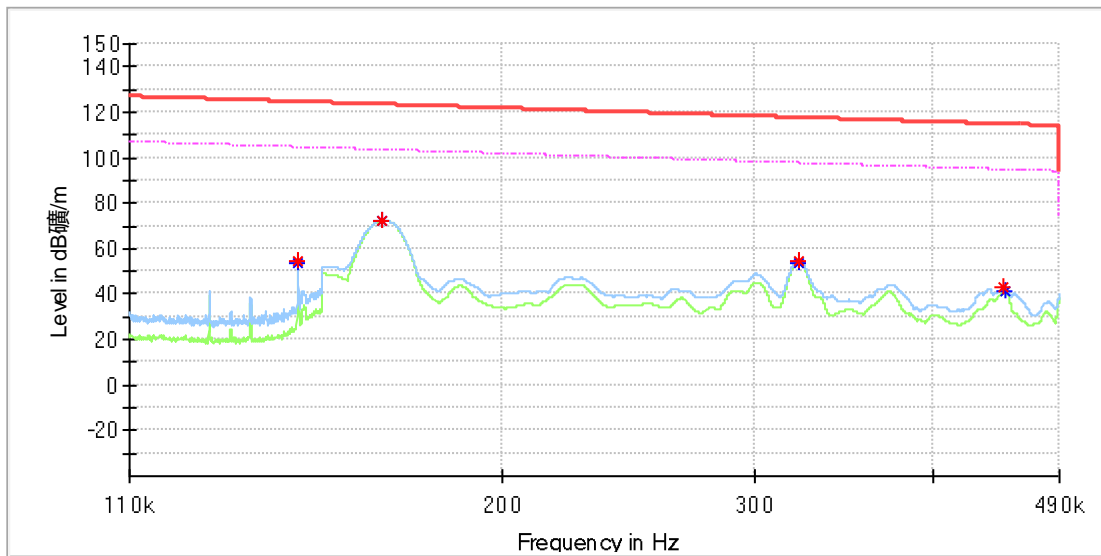


Critical Freqs

Frequency (MHz)	MaxPeak (dBµV/m)	Average (dBµV/m)	Limit (dBµV/m)	Margin (dB)	Height (cm)	Pol	Azimuth (deg)	Corr. (dB/m)
0.144057	60.59	---	124.43	63.83	100.0	Y	0.0	20.0
0.144086	---	60.14	104.43	44.29	100.0	Y	359.0	20.0
0.165050	76.40	---	123.25	46.85	100.0	Y	78.0	20.0
0.165150	---	76.17	103.24	27.07	100.0	Y	78.0	20.0
0.321950	---	57.10	97.45	40.35	100.0	Y	84.0	20.0
0.322000	57.71	---	117.45	59.73	100.0	Y	84.0	20.0
0.435700	46.77	---	114.82	68.05	100.0	Y	128.0	20.0
0.437400	---	43.75	94.79	51.03	100.0	Y	128.0	20.0

EUT Information

EUT Name: 3 IN 1 WIRELESS CHARGING STAND
 Model: #03170
 Test Mode: Phone + Earbuds + Watch wireless charging
 Order No/Sample No: 168484850/A003720195-001
 Test Voltage: 120V/60Hz
 Remark: Temp 22 Humi:52%
 Test Standard: FCC Part 15C
 Tested By: Kei Zhang
 Reviewed By: Terry Yin

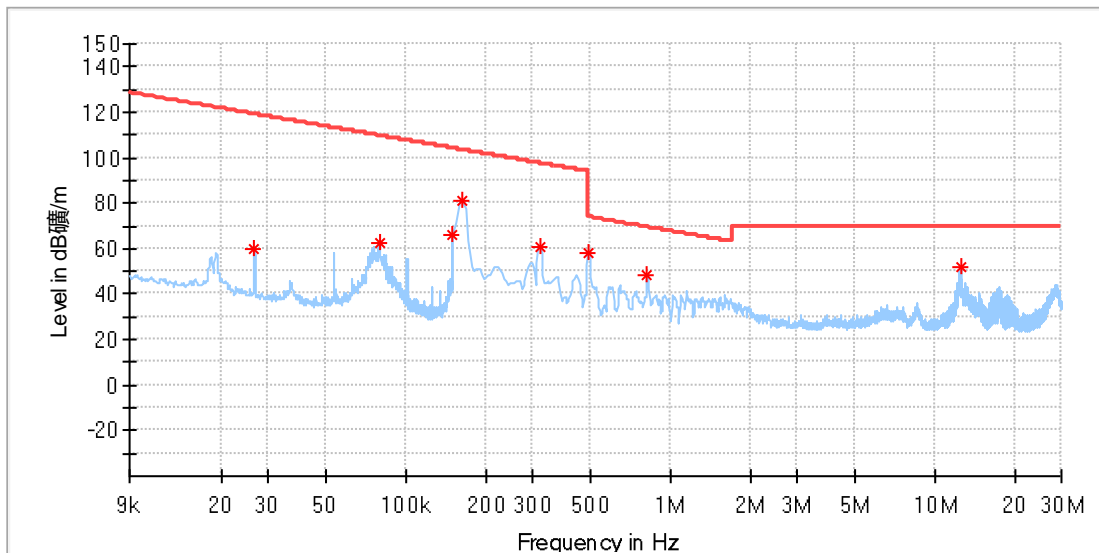


Critical Freqs

Frequency (MHz)	MaxPeak (dBµV/m)	Average (dBµV/m)	Limit (dBµV/m)	Margin (dB)	Height (cm)	Pol	Azimuth (deg)	Corr. (dB/m)
0.144171	54.53	---	124.42	69.89	100.0	Z	263.0	20.0
0.144171	---	54.09	104.42	50.33	100.0	Z	263.0	20.0
0.165100	72.53	---	123.24	50.71	100.0	Z	0.0	20.0
0.165150	---	72.31	103.24	30.93	100.0	Z	0.0	20.0
0.322100	---	54.05	97.44	43.39	100.0	Z	354.0	20.0
0.322150	54.72	---	117.44	62.72	100.0	Z	354.0	20.0
0.448000	42.70	---	114.58	71.88	100.0	Z	66.0	20.0
0.448800	---	41.17	94.56	53.40	100.0	Z	66.0	20.0

EUT Information

EUT Name:	3 IN 1 WIRELESS CHARGING STAND
Model:	#03170
Test Mode:	Phone + Earbuds + Watch wireless charging
Order No/Sample No:	168484850/A003720195-001
Test Voltage:	120V/60Hz
Remark:	Temp 22 Humi:52%
Test Standard:	FCC Part 15C
Tested By:	Kei Zhang
Reviewed By:	Terry Yin

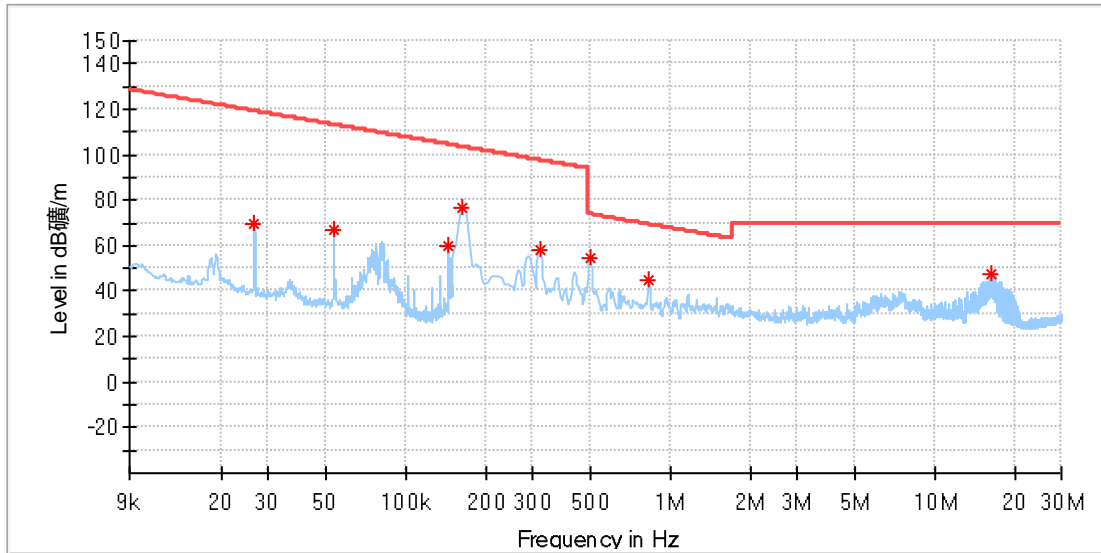


Critical Freqs

Frequency (MHz)	MaxPeak (dBµV/m)	Limit (dBµV/m)	Margin (dB)	Height (cm)	Pol	Azimuth (deg)	Corr. (dB/m)
0.026726	59.90	119.05	59.15	100.0	X	127.0	20.1
0.079097	62.45	109.63	47.18	100.0	X	88.0	20.1
0.148489	65.96	104.16	38.21	100.0	X	95.0	20.1
0.163169	81.20	103.35	22.14	100.0	X	0.0	20.1
0.321199	61.13	97.47	36.34	100.0	X	210.0	20.1
0.492397	58.45	73.76	15.31	100.0	X	0.0	20.1
0.817235	48.42	69.37	20.95	100.0	X	3.0	20.1
12.467515	51.74	69.50	17.76	100.0	X	123.0	20.4

EUT Information

EUT Name:	3 IN 1 WIRELESS CHARGING STAND
Model:	#03170
Test Mode:	Phone + Earbuds + Watch wireless charging
Order No/Sample No:	168484850/A003720195-001
Test Voltage:	120V/60Hz
Remark:	Temp 22 Humi:52%
Test Standard:	FCC Part 15C
Tested By:	Kei Zhang
Reviewed By:	Terry Yin

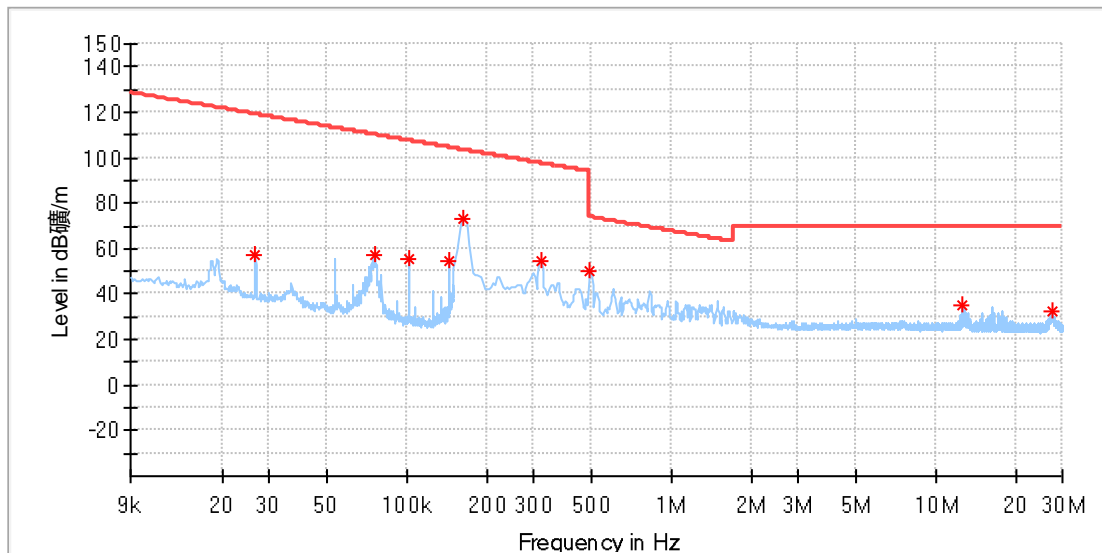


Critical Freqs

Frequency (MHz)	MaxPeak (dBµV/m)	Limit (dBµV/m)	Margin (dB)	Height (cm)	Pol	Azimuth (deg)	Corr. (dB/m)
0.026726	69.71	119.05	49.35	100.0	Y	319.0	20.1
0.053415	66.62	113.04	46.42	100.0	Y	79.0	20.1
0.144058	60.15	104.43	44.28	100.0	Y	359.0	20.1
0.163169	76.59	103.35	26.76	100.0	Y	268.0	20.1
0.321199	58.49	97.47	38.97	100.0	Y	253.0	20.1
0.496787	54.27	73.68	19.41	100.0	Y	85.0	20.1
0.826015	45.04	69.28	24.23	100.0	Y	110.0	20.1
16.260221	47.78	69.50	21.72	100.0	Y	56.0	20.5

EUT Information

EUT Name:	3 IN 1 WIRELESS CHARGING STAND
Model:	#03170
Test Mode:	Phone + Earbuds + Watch wireless charging
Order No/Sample No:	168484850/A003720195-001
Test Voltage:	120V/60Hz
Remark:	Temp 22 Humi:52%
Test Standard:	FCC Part 15C
Tested By:	Kei Zhang
Reviewed By:	Terry Yin

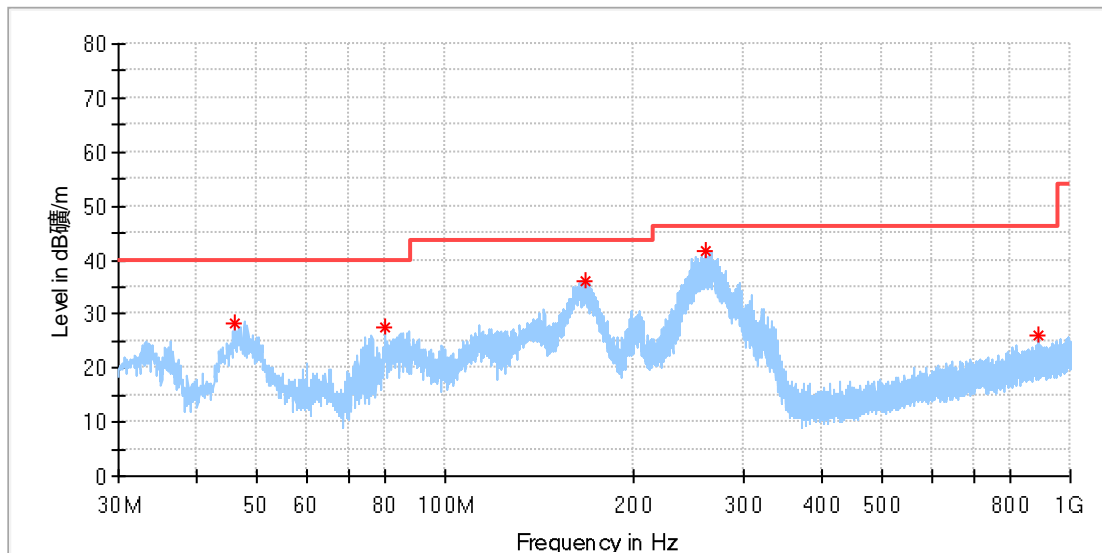


Critical Freqs

Frequency (MHz)	MaxPeak (dBµV/m)	Limit (dBµV/m)	Margin (dB)	Height (cm)	Pol	Azimuth (deg)	Corr. (dB/m)
0.026726	57.61	119.05	61.44	100.0	Z	334.0	20.1
0.075774	57.05	110.01	52.96	100.0	Z	70.0	20.1
0.101154	55.01	107.50	52.49	100.0	Z	202.0	20.1
0.144159	54.52	104.42	49.90	100.0	Z	266.0	20.1
0.163169	72.75	103.35	30.60	100.0	Z	358.0	20.1
0.321199	54.59	97.47	42.88	100.0	Z	8.0	20.1
0.492397	50.38	73.76	23.38	100.0	Z	354.0	20.1
12.603596	35.20	69.50	34.30	100.0	Z	82.0	20.4
27.273993	32.33	69.50	37.17	100.0	Z	204.0	20.7

EUT Information

EUT Name: 3 IN 1 WIRELESS CHARGING STAND
 Model: #03170
 Test Mode: Phone + Earbuds + Watch wireless charging
 Order No/Sample No: 168484850/A003720195-001
 Test Voltage: 120V/60Hz
 Remark: Temp 22 Humi:52%
 Test Standard: FCC Part 15C
 Tested By: Kei Zhang
 Reviewed By: Terry Yin



Critical_Freqs

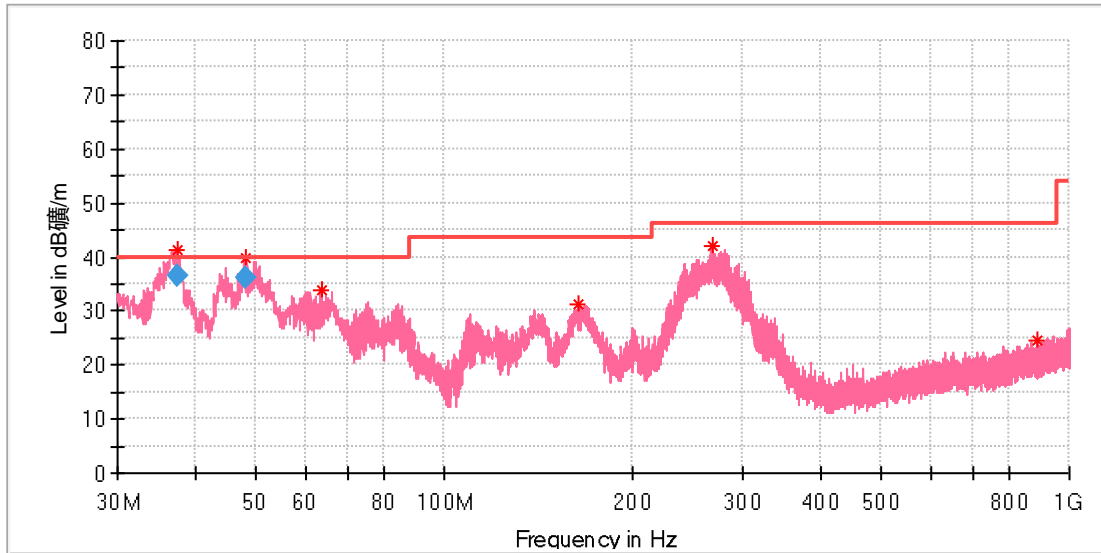
Frequency (MHz)	MaxPeak (dBµV/m)	Limit (dBµV/m)	Margin (dB)	Height (cm)	Pol	Azimuth (deg)	Corr. (dB/m)
46.005000	28.26	40.00	11.74	100.0	H	270.0	-19.0
80.066923	27.65	40.00	12.35	100.0	H	117.0	-23.7
167.441539	36.19	43.50	7.32	100.0	H	84.0	-21.7
261.531539	41.61	46.00	4.39	100.0	H	28.0	-17.4
887.778462	25.95	46.00	20.05	100.0	H	261.0	-5.5

Final_Result

Frequency (MHz)	QuasiPeak (dBµV/m)	Limit (dBµV/m)	Margin (dB)	Height (cm)	Pol	Azimuth (deg)	Corr. (dB/m)
---	---	---	---	---		---	---

EUT Information

EUT Name: 3 IN 1 WIRELESS CHARGING STAND
 Model: #03170
 Test Mode: Phone + Earbuds + Watch wireless charging
 Order No/Sample No: 168484850/A003720195-001
 Test Voltage: 120V/60Hz
 Remark: Temp 22 Humi:52%
 Test Standard: FCC Part 15C
 Tested By: Kei Zhang
 Reviewed By: Terry Yin



Critical Freqs

Frequency (MHz)	MaxPeak (dBµV/m)	Limit (dBµV/m)	Margin (dB)	Height (cm)	Pol	Azimuth (deg)	Corr. (dB/m)
37.312308	41.22	40.00	-1.22	100.0	V	132.0	-21.3
48.280769	39.76	40.00	0.24	100.0	V	34.0	-18.7
63.688846	33.97	40.00	6.03	100.0	V	58.0	-20.1
163.636154	31.27	43.50	12.23	100.0	V	108.0	-21.9
267.761923	41.89	46.00	4.11	100.0	V	26.0	-17.3
886.733846	24.73	46.00	21.27	100.0	V	291.0	-5.5

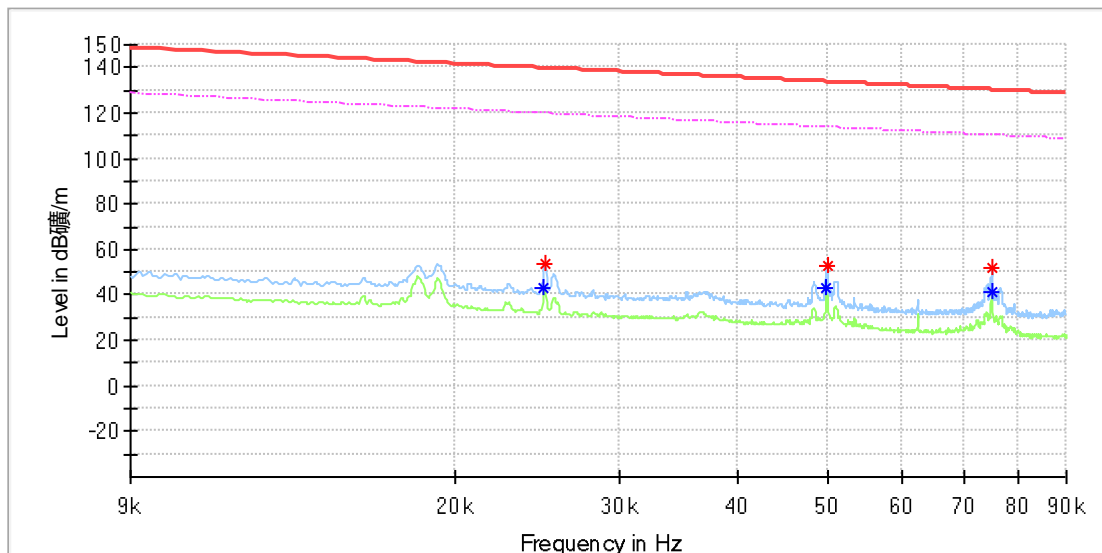
Final Result

Frequency (MHz)	QuasiPeak (dBµV/m)	Limit (dBµV/m)	Margin (dB)	Height (cm)	Pol	Azimuth (deg)	Corr. (dB/m)
37.312308	36.59	40.00	3.41	100.0	V	137.0	-21.3
48.280769	36.27	40.00	3.73	105.0	V	33.0	-18.7

Standby

EUT Information

EUT Name:	3 IN 1 WIRELESS CHARGING STAND
Model:	#03170
Test Mode:	Standby
Order No/Sample No:	168484850/A003720195-001
Test Voltage:	120V/60Hz
Remark:	Temp 22 Humi:52%
Test Standard:	FCC Part 15C
Tested By:	Kei Zhang
Reviewed By:	Terry Yin

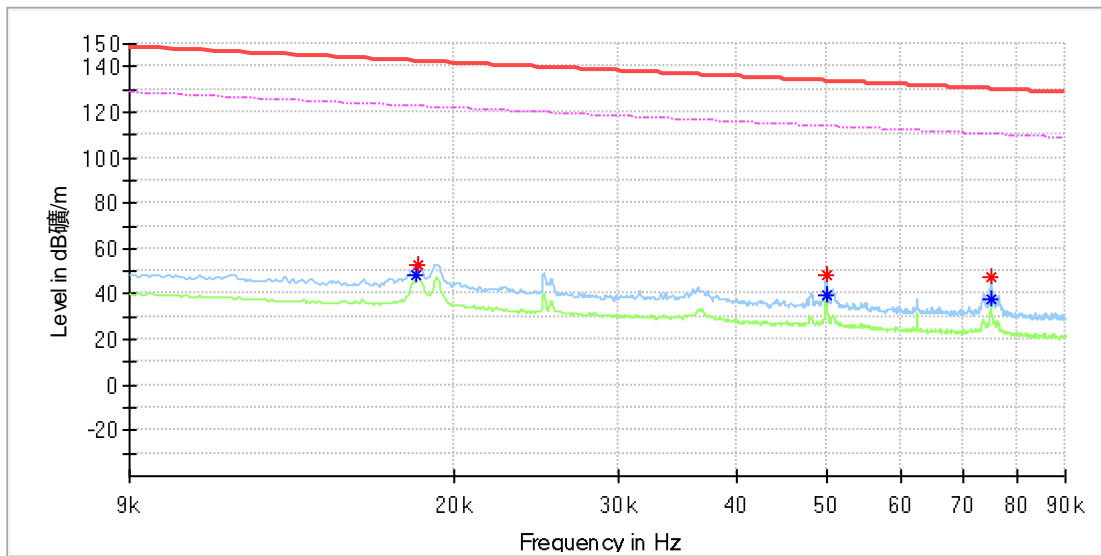


Critical Freqs

Frequency (MHz)	MaxPeak (dBµV/m)	Average (dBµV/m)	Limit (dBµV/m)	Margin (dB)	Height (cm)	Pol	Azimuth (deg)	Corr. (dB/m)
0.024911	---	43.29	119.66	76.37	100.0	X	69.0	20.0
0.024969	54.00	---	139.64	85.64	100.0	X	69.0	20.0
0.049905	---	42.65	113.63	70.98	100.0	X	69.0	20.0
0.049963	52.98	---	133.62	80.64	100.0	X	69.0	20.0
0.074899	---	41.23	110.11	68.87	100.0	X	69.0	20.0
0.074957	52.20	---	130.10	77.90	100.0	X	69.0	20.0

EUT Information

EUT Name:	3 IN 1 WIRELESS CHARGING STAND
Model:	#03170
Test Mode:	Standby
Order No/Sample No:	168484850/A003720195-001
Test Voltage:	120V/60Hz
Remark:	Temp 22 Humi:52%
Test Standard:	FCC Part 15C
Tested By:	Kei Zhang
Reviewed By:	Terry Yin

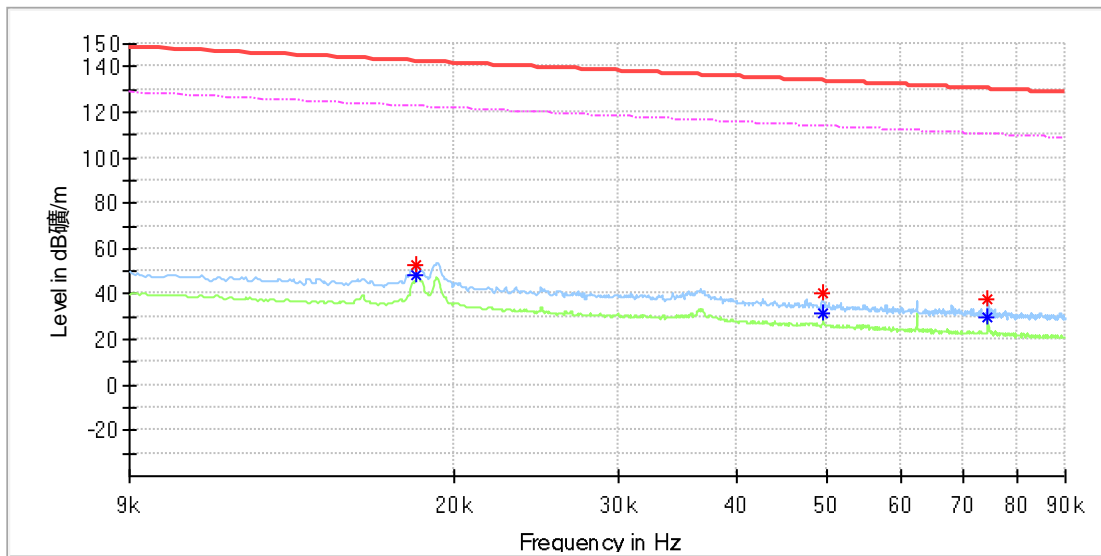


Critical Freqs

Frequency (MHz)	MaxPeak (dBµV/m)	Average (dBµV/m)	Limit (dBµV/m)	Margin (dB)	Height (cm)	Pol	Azimuth (deg)	Corr. (dB/m)
0.018257	---	48.53	122.36	73.83	100.0	Y	176.0	20.0
0.018315	52.61	---	142.33	89.72	100.0	Y	176.0	20.0
0.049963	---	39.36	113.62	74.26	100.0	Y	42.0	20.0
0.050021	48.03	---	133.61	85.58	100.0	Y	42.0	20.0
0.075015	47.41	---	130.09	82.68	100.0	Y	42.0	20.0
0.075015	---	38.05	110.09	72.05	100.0	Y	42.0	20.0

EUT Information

EUT Name: 3 IN 1 WIRELESS CHARGING STAND
 Model: #03170
 Test Mode: Standby
 Order No/Sample No: 168484850/A003720195-001
 Test Voltage: 120V/60Hz
 Remark: Temp 22 Humi:52%
 Test Standard: FCC Part 15C
 Tested By: Kei Zhang
 Reviewed By: Terry Yin

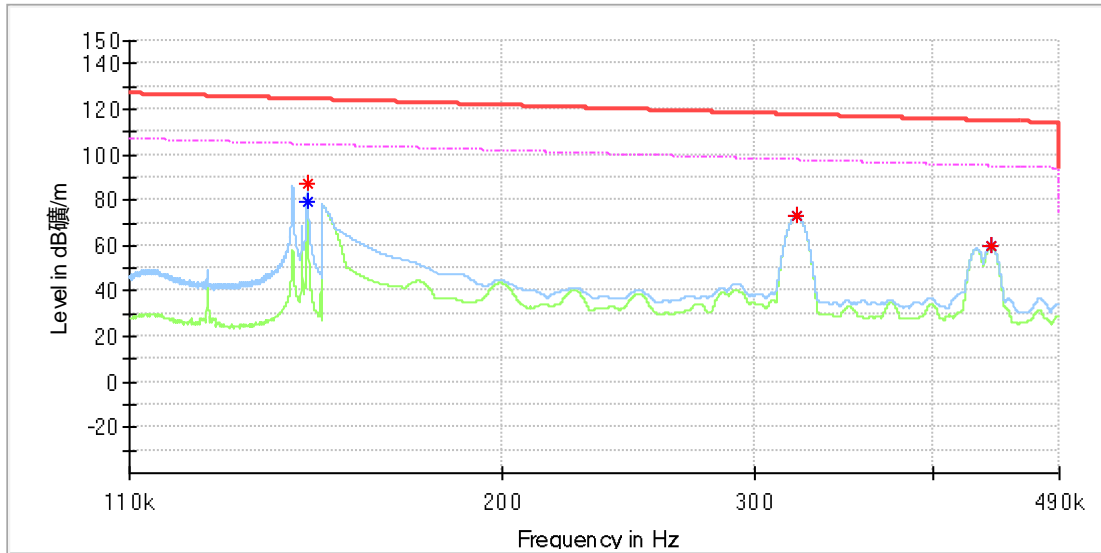


Critical Freqs

Frequency (MHz)	MaxPeak (dBµV/m)	Average (dBµV/m)	Limit (dBµV/m)	Margin (dB)	Height (cm)	Pol	Azimuth (deg)	Corr. (dB/m)
0.018257	52.90	---	142.36	89.45	100.0	Z	289.0	20.0
0.018257	---	48.52	122.36	73.84	100.0	Z	289.0	20.0
0.049558	40.16	---	133.69	93.54	100.0	Z	113.0	20.0
0.049558	---	31.91	113.69	81.78	100.0	Z	113.0	20.0
0.074379	37.84	---	130.17	92.32	100.0	Z	333.0	20.0
0.074379	---	29.74	110.17	80.43	100.0	Z	333.0	20.0

EUT Information

EUT Name: 3 IN 1 WIRELESS CHARGING STAND
 Model: #03170
 Test Mode: Standby
 Order No/Sample No: 168484850/A003720195-001
 Test Voltage: 120V/60Hz
 Remark: Temp 22 Humi:52%
 Test Standard: FCC Part 15C
 Tested By: Kei Zhang
 Reviewed By: Terry Yin

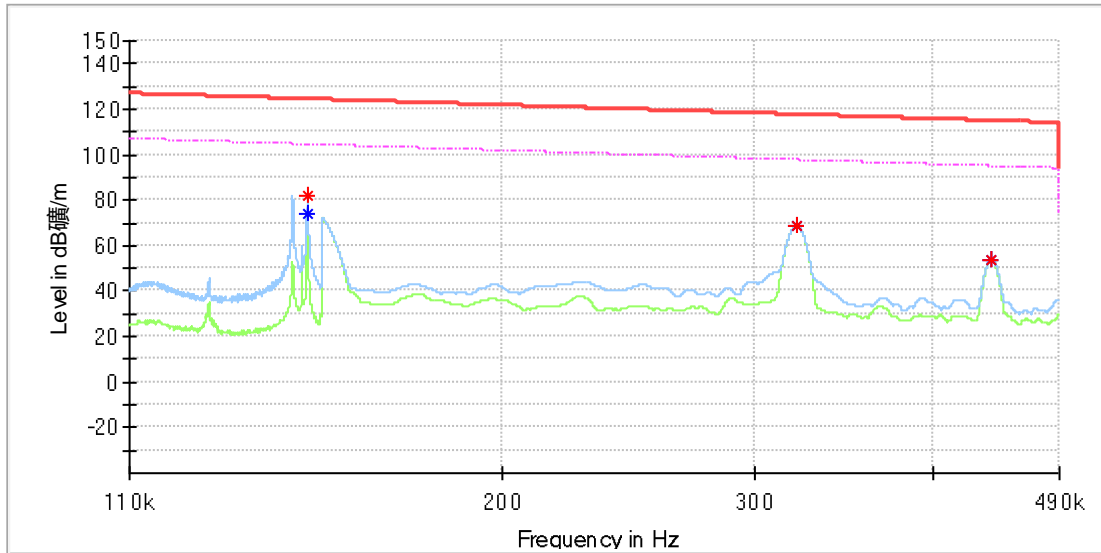


Critical Freqs

Frequency (MHz)	MaxPeak (dBµV/m)	Average (dBµV/m)	Limit (dBµV/m)	Margin (dB)	Height (cm)	Pol	Azimuth (deg)	Corr. (dB/m)
0.146371	87.22	---	124.29	37.07	100.0	X	0.0	20.0
0.146400	---	79.47	104.29	24.82	100.0	X	2.0	20.0
0.321250	73.02	---	117.47	44.45	100.0	X	176.0	20.0
0.321250	---	72.94	97.47	24.52	100.0	X	176.0	20.0
0.438850	59.91	---	114.76	54.85	100.0	X	355.0	20.0
0.439100	---	59.60	94.75	35.15	100.0	X	355.0	20.0

EUT Information

EUT Name: 3 IN 1 WIRELESS CHARGING STAND
 Model: #03170
 Test Mode: Standby
 Order No/Sample No: 168484850/A003720195-001
 Test Voltage: 120V/60Hz
 Remark: Temp 22 Humi:52%
 Test Standard: FCC Part 15C
 Tested By: Kei Zhang
 Reviewed By: Terry Yin

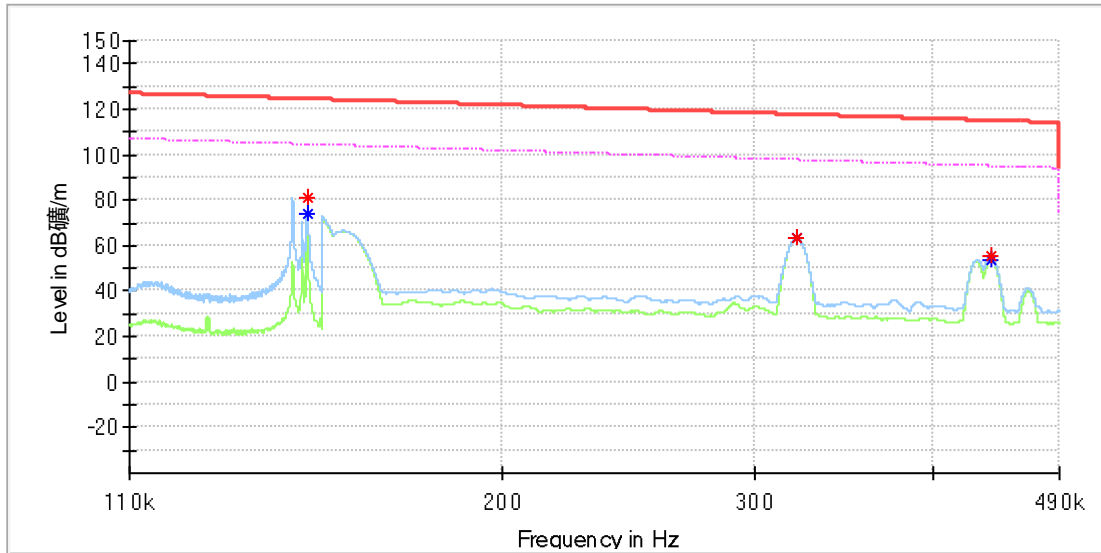


Critical Freqs

Frequency (MHz)	MaxPeak (dBµV/m)	Average (dBµV/m)	Limit (dBµV/m)	Margin (dB)	Height (cm)	Pol	Azimuth (deg)	Corr. (dB/m)
0.146457	81.88	---	124.28	42.41	100.0	Y	98.0	20.0
0.146457	---	74.14	104.28	30.14	100.0	Y	98.0	20.0
0.321150	68.43	---	117.47	49.03	100.0	Y	273.0	20.0
0.321150	---	68.37	97.47	29.10	100.0	Y	273.0	20.0
0.439250	54.08	---	114.75	60.67	100.0	Y	286.0	20.0
0.439300	---	53.80	94.75	40.95	100.0	Y	286.0	20.0

EUT Information

EUT Name:	3 IN 1 WIRELESS CHARGING STAND
Model:	#03170
Test Mode:	Standby
Order No/Sample No:	168484850/A003720195-001
Test Voltage:	120V/60Hz
Remark:	Temp 22 Humi:52%
Test Standard:	FCC Part 15C
Tested By:	Kei Zhang
Reviewed By:	Terry Yin

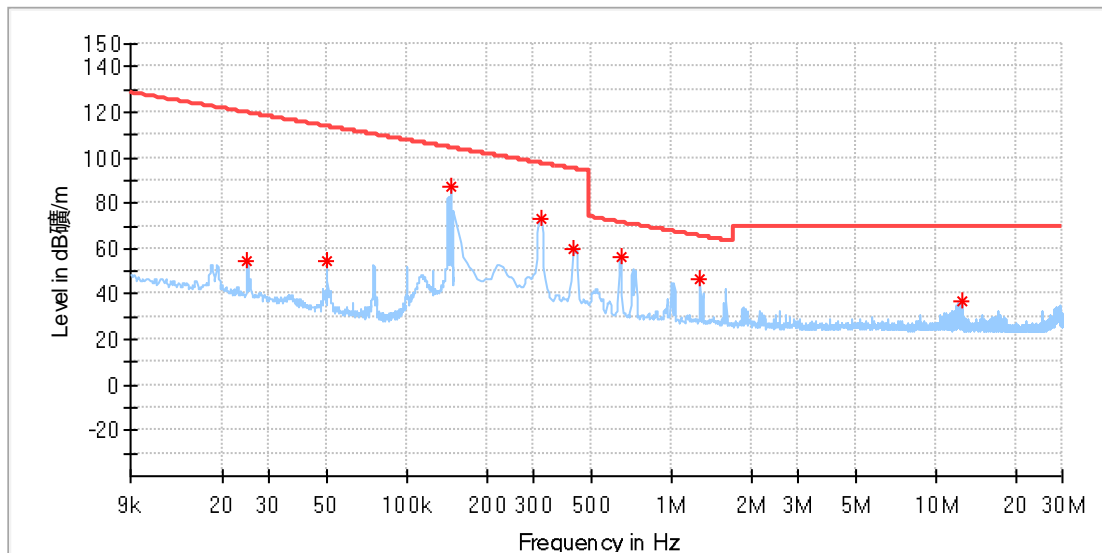


Critical Freqs

Frequency (MHz)	MaxPeak (dBµV/m)	Average (dBµV/m)	Limit (dBµV/m)	Margin (dB)	Height (cm)	Pol	Azimuth (deg)	Corr. (dB/m)
0.146400	81.33	---	124.29	42.96	100.0	Z	13.0	20.0
0.146429	---	73.64	104.29	30.65	100.0	Z	13.0	20.0
0.321300	63.21	---	117.46	54.25	100.0	Z	206.0	20.0
0.321300	---	63.10	97.46	34.36	100.0	Z	206.0	20.0
0.438700	55.11	---	114.76	59.65	100.0	Z	345.0	20.0
0.439150	---	53.79	94.75	40.97	100.0	Z	345.0	20.0

EUT Information

EUT Name:	3 IN 1 WIRELESS CHARGING STAND
Model:	#03170
Test Mode:	Standby
Order No/Sample No:	168484850/A003720195-001
Test Voltage:	120V/60Hz
Remark:	Temp 22 Humi:52%
Test Standard:	FCC Part 15C
Tested By:	Kei Zhang
Reviewed By:	Terry Yin

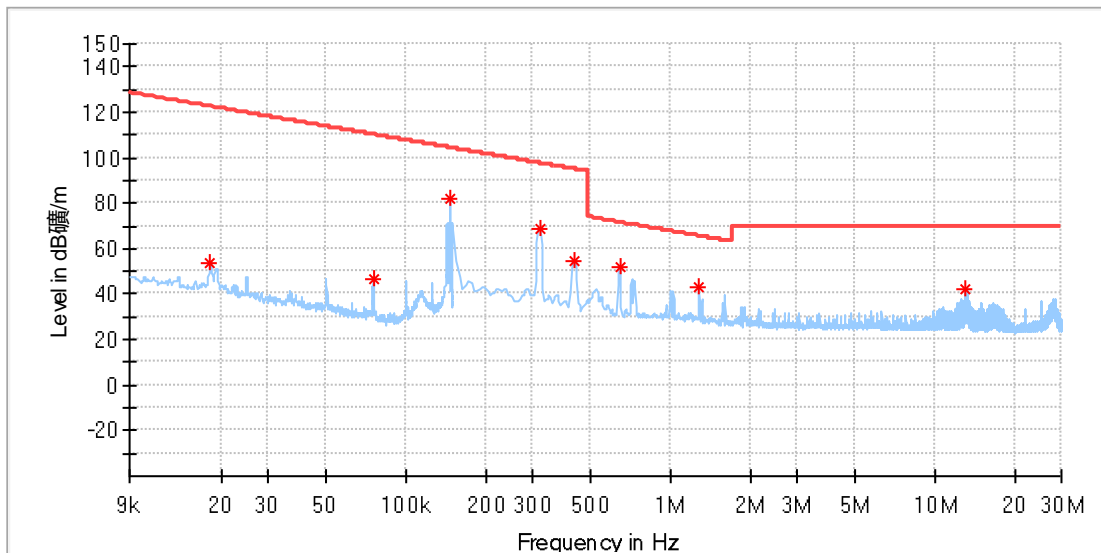


Critical Freqs

Frequency (MHz)	MaxPeak (dBµV/m)	Limit (dBµV/m)	Margin (dB)	Height (cm)	Pol	Azimuth (deg)	Corr. (dB/m)
0.024913	54.48	119.66	65.18	100.0	X	65.0	20.1
0.049890	54.48	113.63	59.15	100.0	X	65.0	20.1
0.146374	87.24	104.29	17.05	100.0	X	0.0	20.1
0.321199	73.13	97.47	24.33	100.0	X	181.0	20.1
0.426552	60.17	95.00	34.83	100.0	X	359.0	20.1
0.641647	56.52	71.47	14.95	100.0	X	181.0	20.1
1.282544	46.18	65.47	19.29	100.0	X	359.0	20.1
12.441177	36.84	69.50	32.66	100.0	X	303.0	20.4

EUT Information

EUT Name:	3 IN 1 WIRELESS CHARGING STAND
Model:	#03170
Test Mode:	Standby
Order No/Sample No:	168484850/A003720195-001
Test Voltage:	120V/60Hz
Remark:	Temp 22 Humi:52%
Test Standard:	FCC Part 15C
Tested By:	Kei Zhang
Reviewed By:	Terry Yin

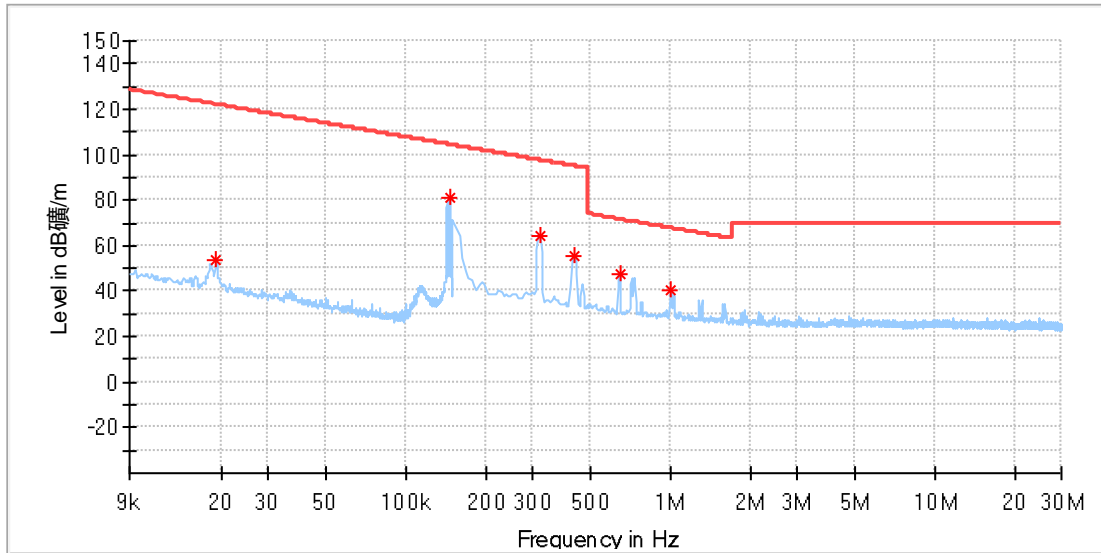


Critical Freqs

Frequency (MHz)	MaxPeak (dBµV/m)	Limit (dBµV/m)	Margin (dB)	Height (cm)	Pol	Azimuth (deg)	Corr. (dB/m)
0.018165	53.28	122.40	69.12	100.0	Y	206.0	20.1
0.074968	46.64	110.10	63.46	100.0	Y	27.0	20.1
0.146475	81.88	104.28	22.40	100.0	Y	281.0	20.1
0.321199	68.69	97.47	28.78	100.0	Y	263.0	20.1
0.435331	54.73	94.83	40.10	100.0	Y	84.0	20.1
0.641647	52.15	71.47	19.31	100.0	Y	270.0	20.1
1.282544	42.81	65.47	22.65	100.0	Y	81.0	20.1
13.029397	41.89	69.50	27.61	100.0	Y	209.0	20.5

EUT Information

EUT Name:	3 IN 1 WIRELESS CHARGING STAND
Model:	#03170
Test Mode:	Standby
Order No/Sample No:	168484850/A003720195-001
Test Voltage:	120V/60Hz
Remark:	Temp 22 Humi:52%
Test Standard:	FCC Part 15C
Tested By:	Kei Zhang
Reviewed By:	Terry Yin

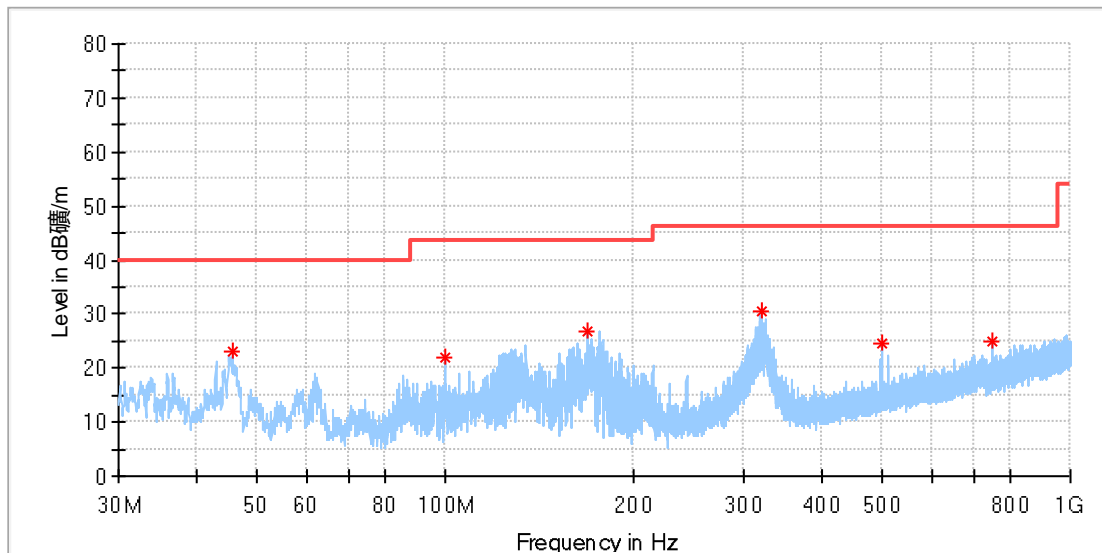


Critical Freqs

Frequency (MHz)	MaxPeak (dBµV/m)	Limit (dBµV/m)	Margin (dB)	Height (cm)	Pol	Azimuth (deg)	Corr. (dB/m)
0.019172	53.44	121.94	68.49	100.0	Z	309.0	20.1
0.146475	81.39	104.28	22.89	100.0	Z	8.0	20.1
0.321199	64.02	97.47	33.45	100.0	Z	181.0	20.1
0.435331	55.46	94.83	39.37	100.0	Z	353.0	20.1
0.641647	47.90	71.47	23.57	100.0	Z	181.0	20.1
0.997213	40.37	67.65	27.27	100.0	Z	349.0	20.1

EUT Information

EUT Name: 3 IN 1 WIRELESS CHARGING STAND
 Model: #03170
 Test Mode: Standby
 Order No/Sample No: 168484850/A003720195-001
 Test Voltage: 120V/60Hz
 Remark: Temp 22 Humi:52%
 Test Standard: FCC Part 15C
 Tested By: Kei Zhang
 Reviewed By: Terry Yin



Critical_Freqs

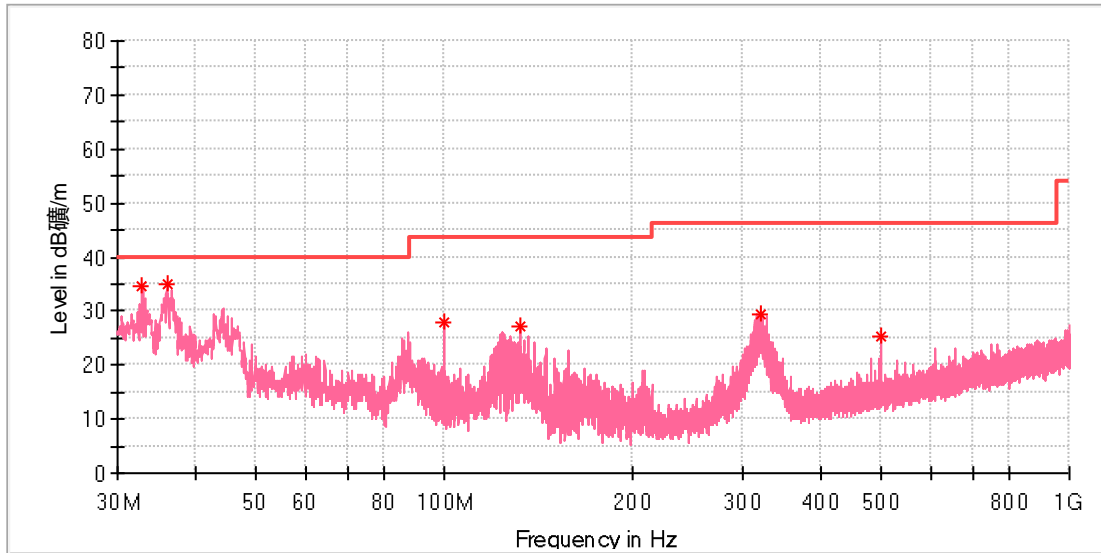
Frequency (MHz)	MaxPeak (dBµV/m)	Limit (dBµV/m)	Margin (dB)	Height (cm)	Pol	Azimuth (deg)	Corr. (dB/m)
45.631923	22.90	40.00	17.10	100.0	H	316.0	-19.0
99.989231	21.99	43.50	21.51	100.0	H	218.0	-19.3
168.635385	26.91	43.50	16.59	100.0	H	75.0	-21.6
320.104615	30.64	46.00	15.36	100.0	H	226.0	-16.1
500.002308	24.66	46.00	21.34	100.0	H	268.0	-12.2
750.038462	25.05	46.00	20.95	100.0	H	307.0	-7.6

Final_Result

Frequency (MHz)	QuasiPeak (dBµV/m)	Limit (dBµV/m)	Margin (dB)	Height (cm)	Pol	Azimuth (deg)	Corr. (dB/m)
---	---	---	---	---		---	---

EUT Information

EUT Name: 3 IN 1 WIRELESS CHARGING STAND
 Model: #03170
 Test Mode: Standby
 Order No/Sample No: 168484850/A003720195-001
 Test Voltage: 120V/60Hz
 Remark: Temp 22 Humi:52%
 Test Standard: FCC Part 15C
 Tested By: Kei Zhang
 Reviewed By: Terry Yin



Critical_Freqs

Frequency (MHz)	MaxPeak (dBµV/m)	Limit (dBµV/m)	Margin (dB)	Height (cm)	Pol	Azimuth (deg)	Corr. (dB/m)
32.872692	34.45	40.00	5.55	100.0	V	262.0	-22.8
36.006539	34.79	40.00	5.21	100.0	V	0.0	-21.8
99.989231	28.03	43.50	15.47	100.0	V	156.0	-19.3
132.409615	27.06	43.50	16.44	100.0	V	196.0	-22.3
320.104615	29.34	46.00	16.66	100.0	V	221.0	-16.1
500.002308	25.41	46.00	20.59	100.0	V	326.0	-12.2

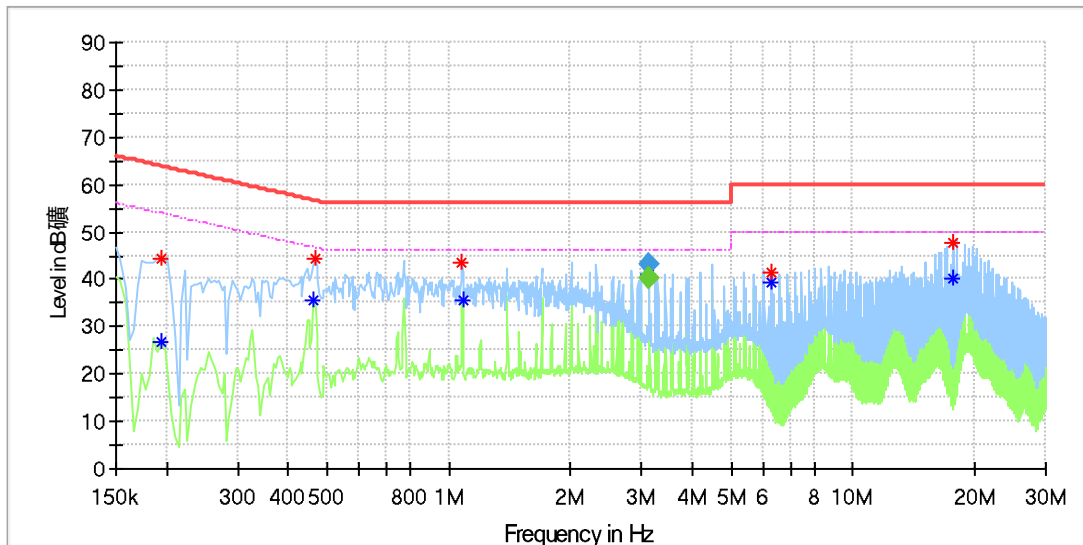
Final_Result

Frequency (MHz)	QuasiPeak (dBµV/m)	Limit (dBµV/m)	Margin (dB)	Height (cm)	Pol	Azimuth (deg)	Corr. (dB/m)
---	---	---	---	---		---	---

Appendix A.3: Test Results of Conducted Emission on AC Mains

EUT Information

EUT Name: 3 IN 1 WIRELESS CHARGING STAND
 Order Number: 168484850
 Model: #03170
 Test Mode: Phone + Earbuds + Watch wireless charging
 Test Voltage: AC 120V/60Hz
 Test Standard: FCC Part 15B
 Test By./Review By: Junhua Sun/ Charlie Zha
 Tem./Hum./Pressure: 23.9°C/52.7%/101kPa
 Remark: SR1



Critical Freqs

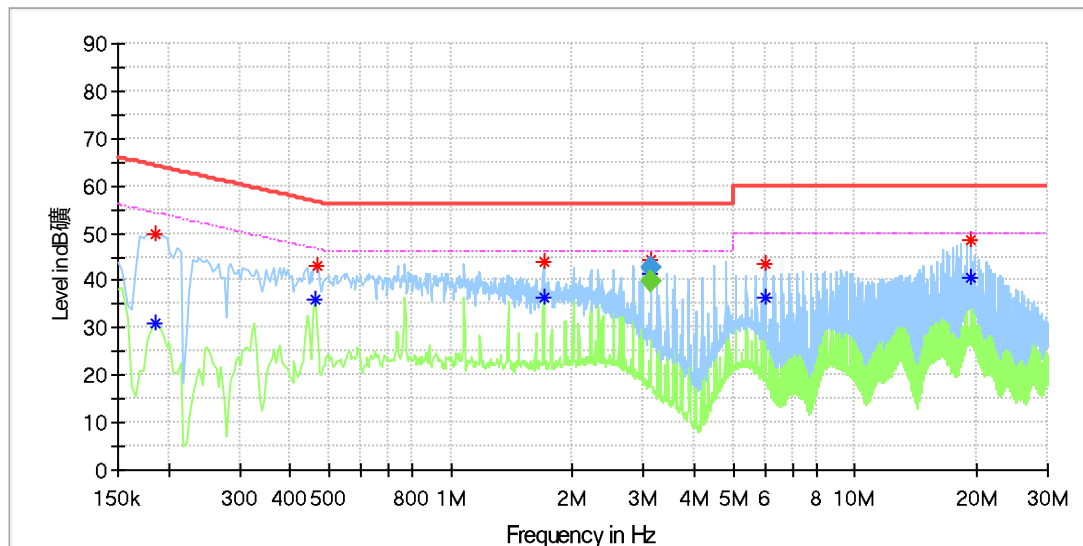
Frequency (MHz)	MaxPeak (dBµV)	Average (dBµV)	Limit (dBµV)	Margin (dB)	Line	Corr. (dB)
0.194000	---	26.97	53.86	26.90	L1	9.8
0.194000	44.57	---	63.86	19.30	L1	9.8
0.462000	---	35.41	46.66	11.25	L1	9.9
0.466000	44.19	---	56.59	12.40	L1	9.9
1.080000	43.58	---	56.00	12.42	L1	9.7
1.084000	---	35.51	46.00	10.49	L1	9.7
3.138500	43.39	---	56.00	12.61	L1	9.9
3.138500	---	41.05	46.00	4.95	L1	9.9
6.276000	---	39.53	50.00	10.47	L1	9.9
6.276000	41.51	---	60.00	18.49	L1	9.9
17.780000	---	40.35	50.00	9.65	L1	10.3
17.780000	47.69	---	60.00	12.31	L1	10.3

Final Result

Frequency (MHz)	QuasiPeak (dBµV)	Average (dBµV)	Limit (dBµV)	Margin (dB)	Meas. Time (ms)	Bandwidth (kHz)	Line	Corr. (dB)
3.138500	---	40.11	46.00	5.89	1000.0	9.000	L1	9.9
3.138500	43.02	---	56.00	12.98	1000.0	9.000	L1	9.9

EUT Information

EUT Name	3 IN 1 WIRELESS CHARGING STAND
Order Number:	168484850
Model:	#03170
Test Mode:	Phone + Earbuds + Watch wireless charging
Test Voltage:	AC 120V/60Hz
Test Standard:	FCC Part 15B
Test By:/Review By:	Junhua Sun/ Charlie Zha
Tem./Hum./Pressure:	23.9°C/52.7%/101kPa
Remark:	SR1



Critical Freqs

Frequency (MHz)	MaxPeak (dBµV)	Average (dBµV)	Limit (dBµV)	Margin (dB)	Line	Corr. (dB)
0.186000	---	31.17	54.21	23.04	N	9.7
0.186000	49.73	---	64.21	14.49	N	9.7
0.462000	---	36.01	46.66	10.65	N	9.7
0.466000	42.96	---	56.59	13.63	N	9.7
1.696000	---	36.52	46.00	9.48	N	9.9
1.696000	43.92	---	56.00	12.08	N	9.9
3.138500	---	41.37	46.00	4.63	N	10.0
3.138500	44.21	---	56.00	11.79	N	10.0
6.012000	---	36.60	50.00	13.40	N	9.9
6.012000	43.59	---	60.00	16.41	N	9.9
19.268000	---	40.78	50.00	9.22	N	10.4
19.272000	48.63	---	60.00	11.37	N	10.4

Final Result

Frequency (MHz)	QuasiPeak (dBµV)	Average (dBµV)	Limit (dBµV)	Margin (dB)	Meas. Time (ms)	Bandwidth (kHz)	Line	Corr. (dB)
3.138500	---	39.72	46.00	6.28	1000.0	9.000	N	10.0
3.138500	42.74	---	56.00	13.26	1000.0	9.000	N	10.0