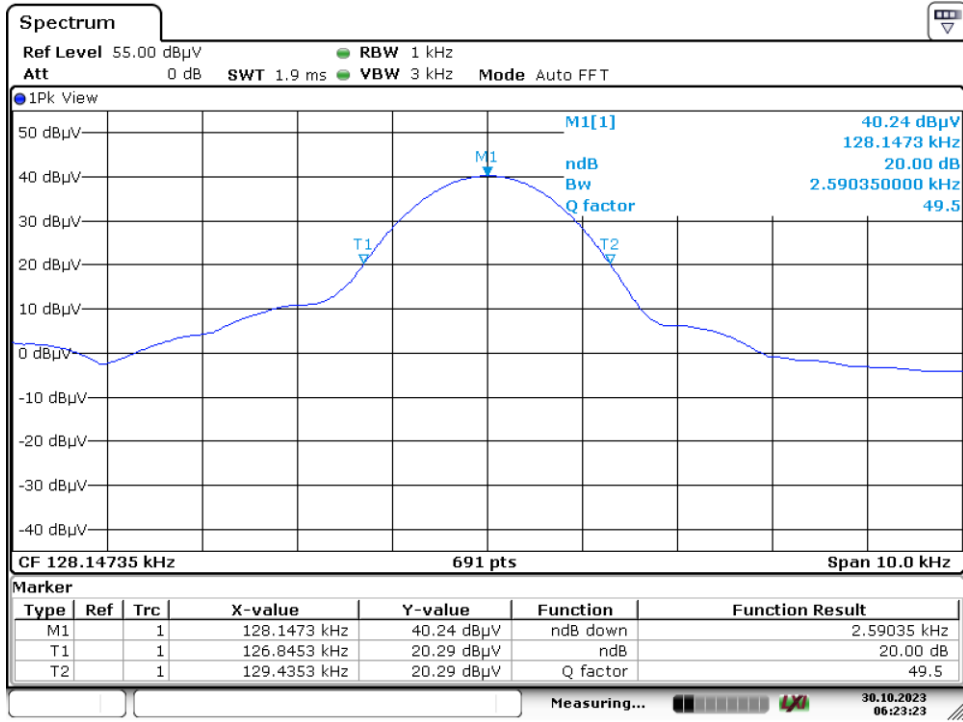


Appendix A: Test Results of FCC Part 15C

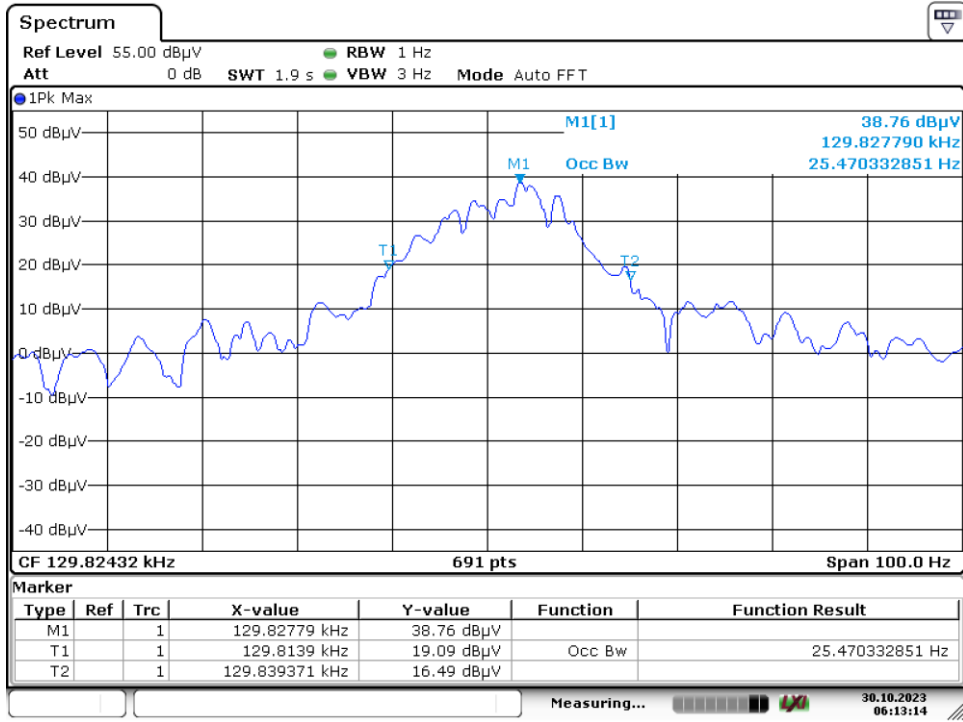
APPENDIX A: TEST RESULTS OF FCC PART 15C.....	1
APPENDIX A.1: TEST RESULTS OF 20DB BANDWIDTH	2
APPENDIX A.2: TEST RESULTS OF 99% BANDWIDTH.....	3
APPENDIX A.3: TEST RESULTS OF RADIATED SPURIOUS EMISSION.....	4
9KHz – 30MHz	4
9kHz - 90KHz.....	7
110KHz - 490KHz	10
30MHz - 1GHz.....	13
APPENDIX A.4: TEST RESULTS OF CONDUCTED EMISSION ON AC MAINS.....	15

Appendix A.1: Test Results of 20dB Bandwidth



Date: 30.OCT.2023 06:23:23

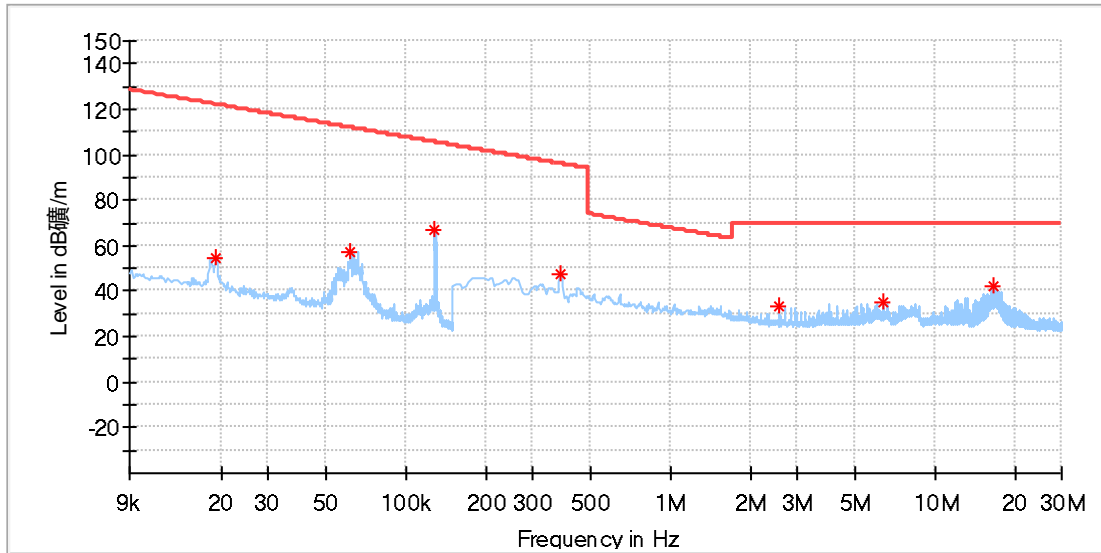
Appendix A.2: Test Results of 99% Bandwidth



Date: 30.OCT.2023 06:13:15

EUT Information

EUT Name:	TTNM WRLS MGNTC CHRGR W/TYPE C
Model:	608707678630
Test Mode:	Charging
Order No/Sample No:	168447466/A003579946-001
Test Voltage:	120V/60Hz
Remark:	Temp 22 Humi:55%
Test Standard:	FCC Part 15C
Tested By:	Kei Zhang
Reviewed By:	Terry Yin



Critical Freqs

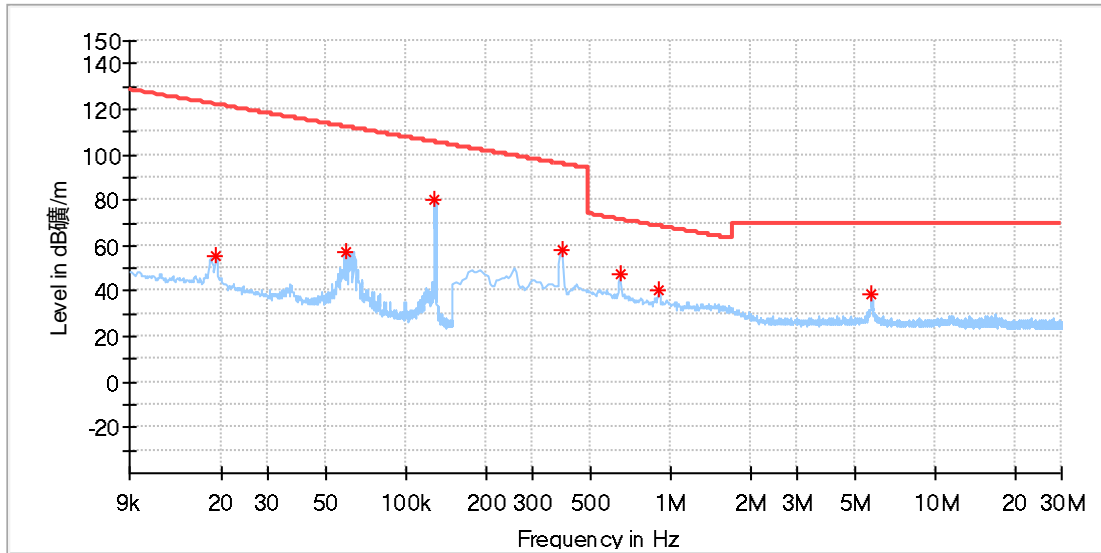
Frequency (MHz)	MaxPeak (dBµV/m)	Limit (dBµV/m)	Margin (dB)	Height (cm)	Pol	Azimuth (deg)	Corr. (dB/m)
0.019071	54.95	121.98	67.03	100.0	Y	156.0	20.1
0.061573	57.48	111.81	54.33	100.0	Y	33.0	20.1
0.128548	67.07	105.42	38.35	100.0	Y	133.0	20.1
0.382655	47.83	95.95	48.12	100.0	Y	299.0	20.1
2.573118	33.32	69.50	36.18	100.0	Y	54.0	20.2
6.308757	35.48	69.50	34.02	100.0	Y	64.0	20.3
16.615787	42.27	69.50	27.23	100.0	Y	34.0	20.5

Final Result

Frequency (MHz)	QuasiPeak (dBµV/m)	Limit (dBµV/m)	Margin (dB)	Height (cm)	Pol	Azimuth (deg)	Corr. (dB/m)
---	---	---	---	---		---	---

EUT Information

EUT Name:	TTNM WRLS MGNTC CHRGR W/TYPE C
Model:	608707678630
Test Mode:	Charging
Order No/Sample No:	168447466/A003579946-001
Test Voltage:	120V/60Hz
Remark:	Temp 22 Humi:55%
Test Standard:	FCC Part 15C
Tested By:	Kei Zhang
Reviewed By:	Terry Yin



Critical Freqs

Frequency (MHz)	MaxPeak (dBµV/m)	Limit (dBµV/m)	Margin (dB)	Height (cm)	Pol	Azimuth (deg)	Corr. (dB/m)
0.019071	55.19	121.98	66.79	100.0	Z	67.0	20.1
0.059458	57.50	112.11	54.61	100.0	Z	71.0	20.1
0.128145	80.32	105.44	25.13	100.0	Z	317.0	20.1
0.387044	57.66	95.85	38.18	100.0	Z	320.0	20.1
0.646037	47.36	71.41	24.05	100.0	Z	338.0	20.1
0.905030	40.37	68.49	28.12	100.0	Z	305.0	20.1
5.724927	38.46	69.50	31.04	100.0	Z	81.0	20.3

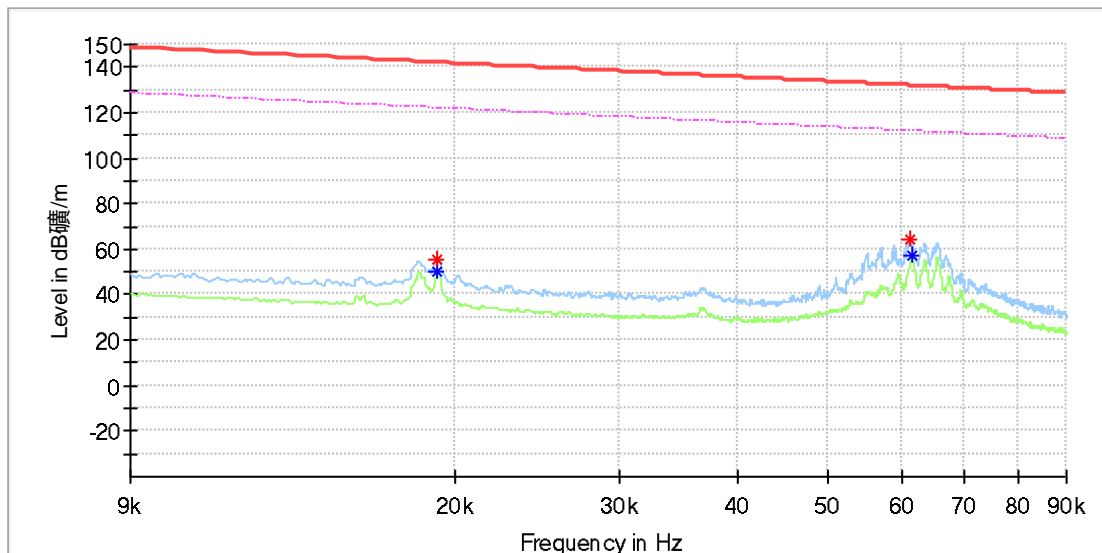
Final Result

Frequency (MHz)	QuasiPeak (dBµV/m)	Limit (dBµV/m)	Margin (dB)	Height (cm)	Pol	Azimuth (deg)	Corr. (dB/m)
---	---	---	---	---		---	---

9kHz - 90kHz

EUT Information

EUT Name:	TTNM WRLS MGNTC CHRGR W/TYPE C
Model:	608707678630
Test Mode:	Charging
Order No/Sample No:	168447466/A003579946-001
Test Voltage:	120V/60Hz
Remark:	Temp 22 Humi:55%
Test Standard:	FCC Part 15C
Tested By:	Kei Zhang
Reviewed By:	Terry Yin

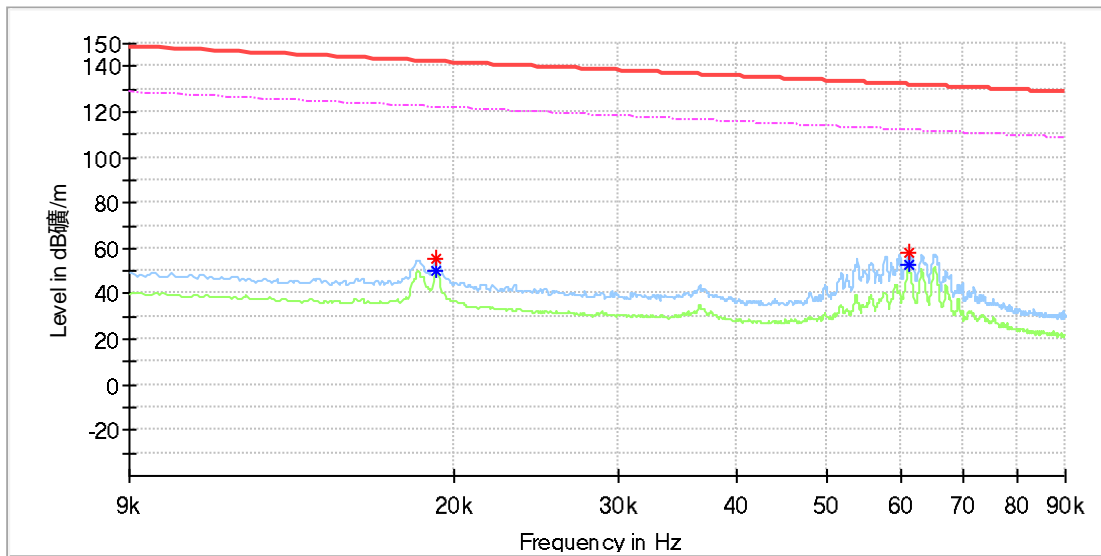


Critical Freqs

Frequency (MHz)	MaxPeak (dBµV/m)	Average (dBµV/m)	Limit (dBµV/m)	Margin (dB)	Height (cm)	Pol	Azimuth (deg)	Corr. (dB/m)
0.019183	55.06	---	141.93	86.87	100.0	X	319.0	20.0
0.019183	---	50.13	121.93	71.80	100.0	X	319.0	20.0
0.061129	63.84	---	131.87	68.03	100.0	X	68.0	20.0
0.061476	---	57.10	111.82	54.72	100.0	X	76.0	20.0

EUT Information

EUT Name:	TTNM WRLS MGNTC CHRGR W/TYPE C
Model:	608707678630
Test Mode:	Charging
Order No/Sample No:	168447466/A003579946-001
Test Voltage:	120V/60Hz
Remark:	Temp 22 Humi:55%
Test Standard:	FCC Part 15C
Tested By:	Kei Zhang
Reviewed By:	Terry Yin

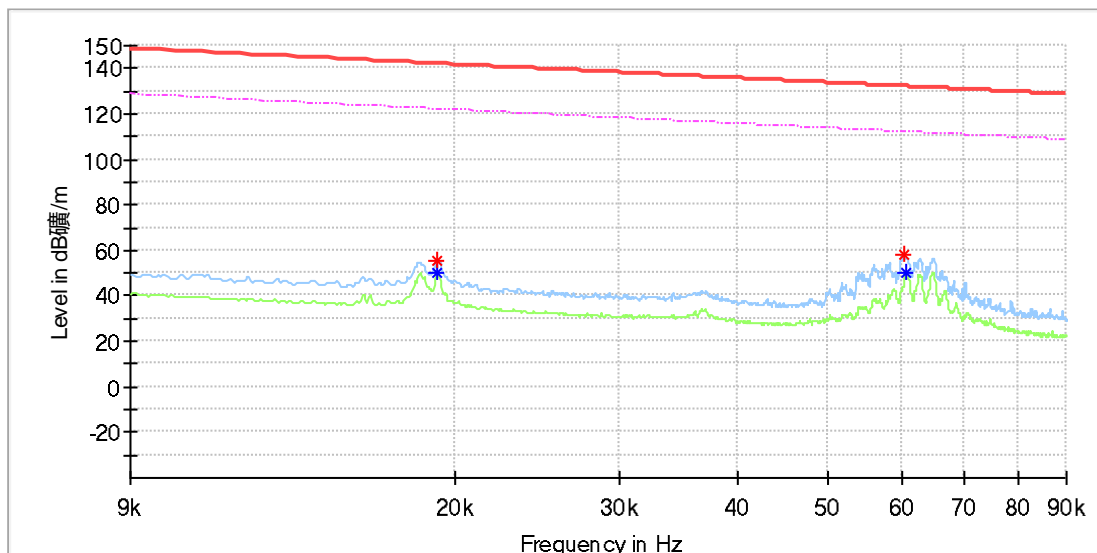


Critical Freqs

Frequency (MHz)	MaxPeak (dBµV/m)	Average (dBµV/m)	Limit (dBµV/m)	Margin (dB)	Height (cm)	Pol	Azimuth (deg)	Corr. (dB/m)
0.019125	55.67	---	141.96	86.29	100.0	Y	184.0	20.0
0.019183	---	50.10	121.93	71.83	100.0	Y	184.0	20.0
0.061129	---	52.36	111.87	59.51	100.0	Y	31.0	20.0
0.061187	58.02	---	131.86	73.84	100.0	Y	31.0	20.0

EUT Information

EUT Name:	TTNM WRLS MGNTC CHRGR W/TYPE C
Model:	608707678630
Test Mode:	Charging
Order No/Sample No:	168447466/A003579946-001
Test Voltage:	120V/60Hz
Remark:	Temp 22 Humi:55%
Test Standard:	FCC Part 15C
Tested By:	Kei Zhang
Reviewed By:	Terry Yin



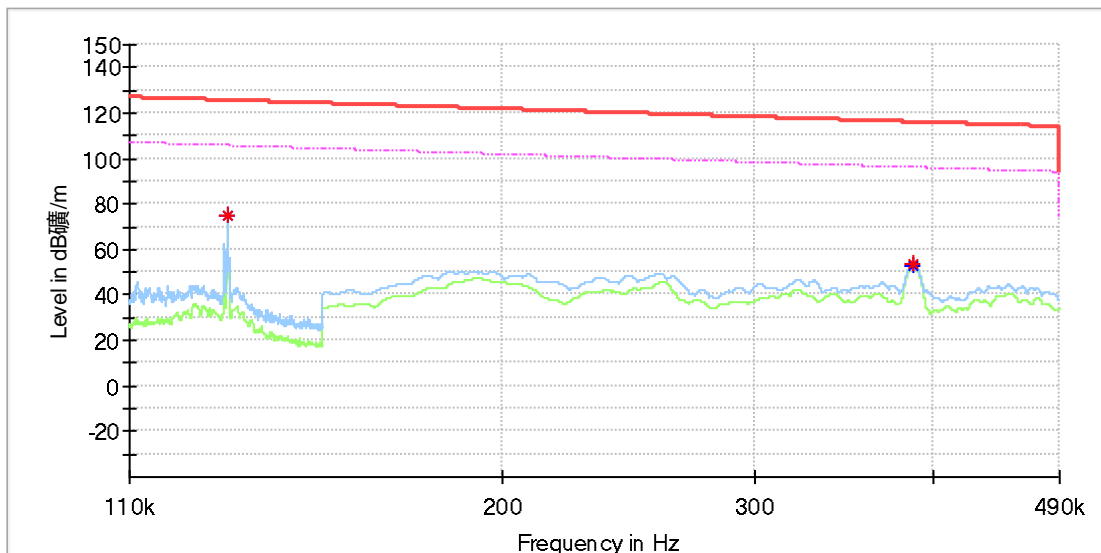
Critical Freqs

Frequency (MHz)	MaxPeak (dBµV/m)	Average (dBµV/m)	Limit (dBµV/m)	Margin (dB)	Height (cm)	Pol	Azimuth (deg)	Corr. (dB/m)
0.019183	55.53	---	141.93	86.40	100.0	Z	34.0	20.0
0.019183	---	49.90	121.93	72.03	100.0	Z	34.0	20.0
0.060261	58.31	---	131.99	73.68	100.0	Z	80.0	20.0
0.060666	---	50.50	111.94	61.43	100.0	Z	67.0	20.0

110KHz - 490KHz

EUT Information

EUT Name:	TTNM WRLS MGNTC CHRGR W/TYPE C
Model:	608707678630
Test Mode:	Charging
Order No/Sample No:	168447466/A003579946-001
Test Voltage:	120V/60Hz
Remark:	Temp 22 Humi:55%
Test Standard:	FCC Part 15C
Tested By:	Kei Zhang
Reviewed By:	Terry Yin

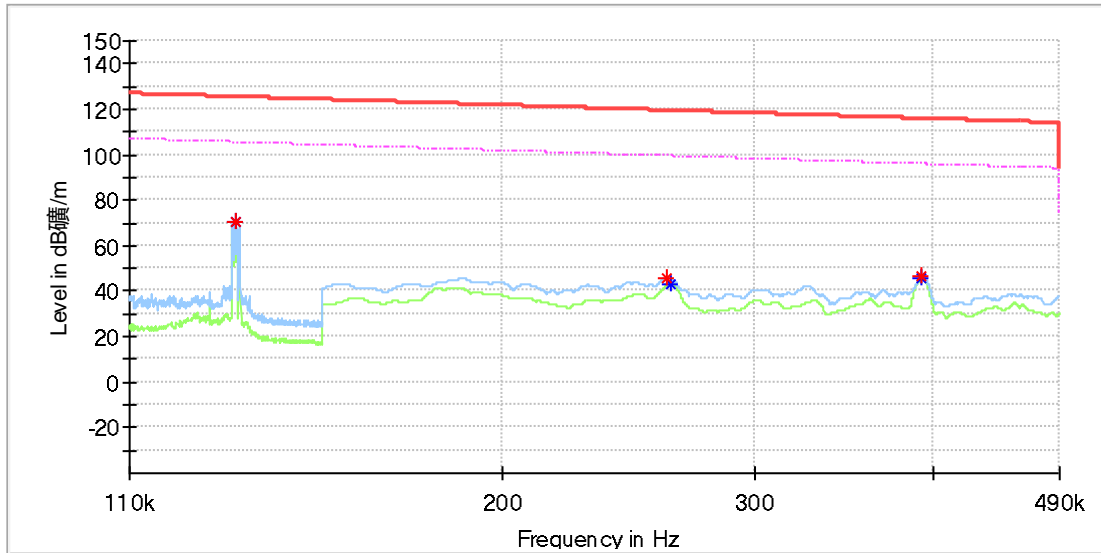


Critical Freqs

Frequency (MHz)	MaxPeak (dBµV/m)	Average (dBµV/m)	Limit (dBµV/m)	Margin (dB)	Height (cm)	Pol	Azimuth (deg)	Corr. (dB/m)
0.128800	75.00	---	125.40	50.40	100.0	X	183.0	20.0
0.128800	---	74.86	105.40	30.54	100.0	X	183.0	20.0
0.387400	---	53.19	95.84	42.65	100.0	X	188.0	20.0
0.387450	53.46	---	115.84	62.38	100.0	X	188.0	20.0

EUT Information

EUT Name:	TTNM WRLS MGNTC CHRGR W/TYPE C
Model:	608707678630
Test Mode:	Charging
Order No/Sample No:	168447466/A003579946-001
Test Voltage:	120V/60Hz
Remark:	Temp 22 Humi:55%
Test Standard:	FCC Part 15C
Tested By:	Kei Zhang
Reviewed By:	Terry Yin

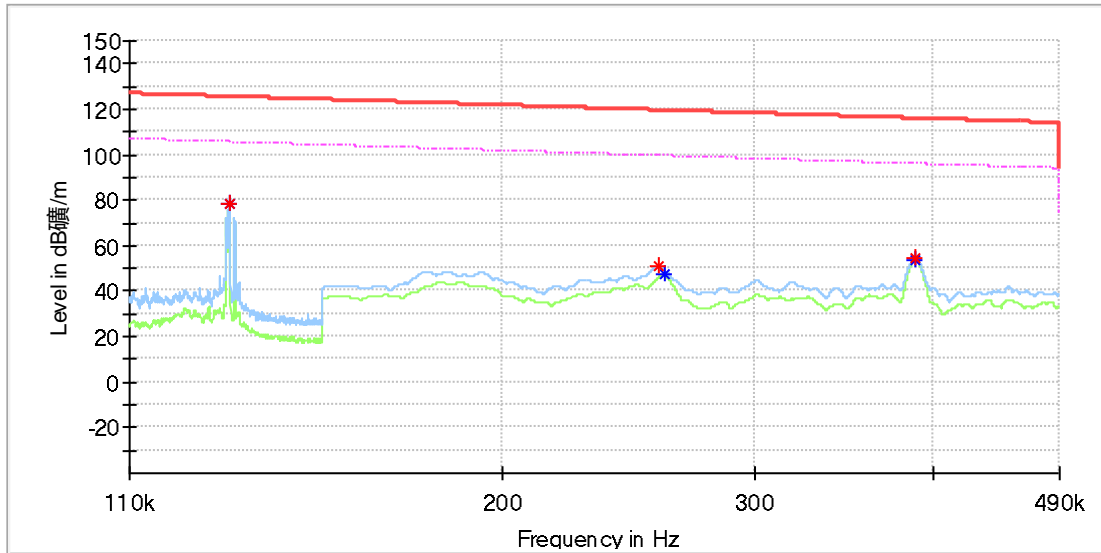


Critical Freqs

Frequency (MHz)	MaxPeak (dBµV/m)	Average (dBµV/m)	Limit (dBµV/m)	Margin (dB)	Height (cm)	Pol	Azimuth (deg)	Corr. (dB/m)
0.130600	---	70.63	105.28	34.64	100.0	Y	39.0	20.0
0.130600	70.86	---	125.28	54.42	100.0	Y	39.0	20.0
0.260700	45.98	---	119.28	73.30	100.0	Y	184.0	20.0
0.262000	---	43.41	99.24	55.82	100.0	Y	184.0	20.0
0.392900	---	45.68	95.72	50.04	100.0	Y	251.0	20.0
0.393000	46.42	---	115.72	69.30	100.0	Y	251.0	20.0

EUT Information

EUT Name:	TTNM WRLS MGNTC CHRGR W/TYPE C
Model:	608707678630
Test Mode:	Charging
Order No/Sample No:	168447466/A003579946-001
Test Voltage:	120V/60Hz
Remark:	Temp 22 Humi:55%
Test Standard:	FCC Part 15C
Tested By:	Kei Zhang
Reviewed By:	Terry Yin

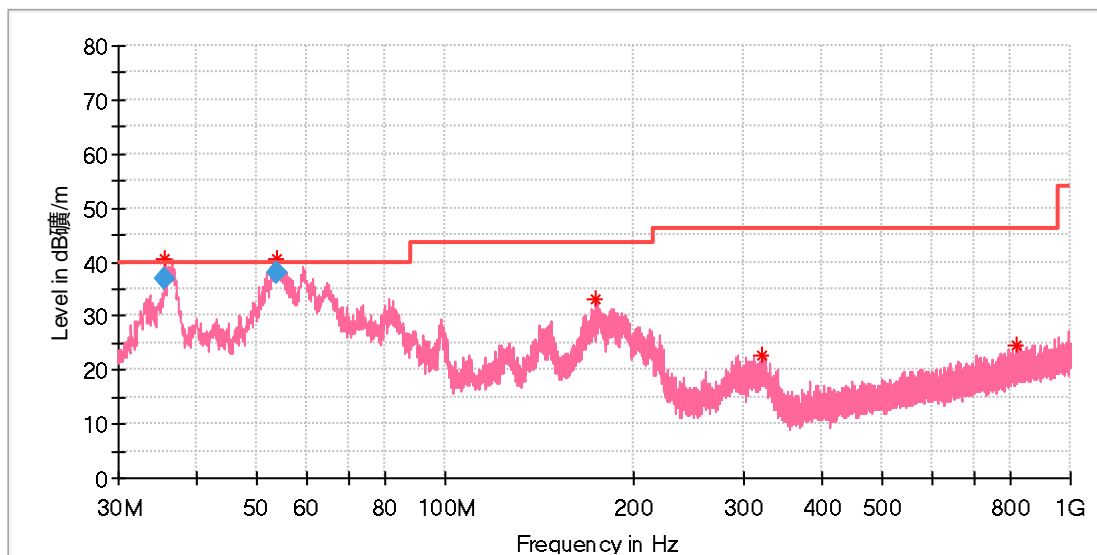


Critical Freqs

Frequency (MHz)	MaxPeak (dBµV/m)	Average (dBµV/m)	Limit (dBµV/m)	Margin (dB)	Height (cm)	Pol	Azimuth (deg)	Corr. (dB/m)
0.129143	78.63	---	125.38	46.75	100.0	Z	134.0	20.0
0.129143	---	78.53	105.38	26.84	100.0	Z	134.0	20.0
0.257200	50.73	---	119.40	68.66	100.0	Z	296.0	20.0
0.259450	---	47.06	99.32	52.26	100.0	Z	296.0	20.0
0.388500	54.52	---	115.82	61.30	100.0	Z	141.0	20.0
0.388550	---	54.04	95.81	41.78	100.0	Z	141.0	20.0

EUT Information

EUT Name:	TTNM WRLS MGNTC CHRGR W/TYPE C
Model:	608707678630
Test Mode:	Charging
Order No/Sample No:	168447466/A003579946-001
Test Voltage:	120V/60Hz
Remark:	Temp 22 Humi:55%
Test Standard:	FCC Part 15C
Tested By:	Kei Zhang
Reviewed By:	Terry Yin



Critical Freqs

Frequency (MHz)	MaxPeak (dBµV/m)	Limit (dBµV/m)	Margin (dB)	Height (cm)	Pol	Azimuth (deg)	Corr. (dB/m)
35.670769	40.65	40.00	-0.65	100.0	V	259.0	-22.0
53.615769	40.69	40.00	-0.69	100.0	V	98.0	-18.7
174.306154	32.98	43.50	10.52	100.0	V	250.0	-21.3
321.559615	22.88	46.00	23.12	100.0	V	98.0	-16.0
818.348846	24.50	46.00	21.50	100.0	V	250.0	-6.4

Final Result

Frequency (MHz)	QuasiPeak (dBµV/m)	Limit (dBµV/m)	Margin (dB)	Height (cm)	Pol	Azimuth (deg)	Corr. (dB/m)
35.670769	36.99	40.00	3.01	105.0	V	254.0	-21.8
53.615769	37.83	40.00	2.17	105.0	V	103.0	-18.7

