

Key fob

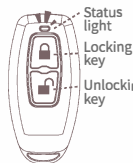
R1

User Manual

Key fob R1

| | |
|--------------------|------------------------|
| Model | R1 |
| Dimensions | 60.6mm x 29mm x 11.7mm |
| Material | Plastic |
| Frequency | 2.4GHz |
| Power supply | CR2032 |
| Voltage | 3V |
| Number of openings | >10000 |
| Idle current | <2uA |

Button and light illustration



Unlocking: Press the unlocking key to unlock, the status light flickers.

Locking: Press the locking key to lock, the status light flickers.

Low power: The status light flickers slowly on locking/unlocking.

Add key fob to a lock in APP

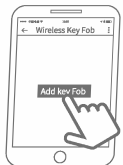
- 1 Activate the APP, select the lock you want to add a key fob.



- 2 Press Wireless key fob.



- 3 Press "Add key fob"



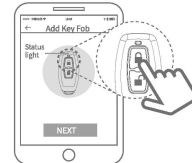
- 4 Select the time frame, fill in the name and press "Next."



- 6 Press the device that has an "+" icon to complete.

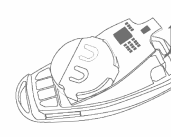
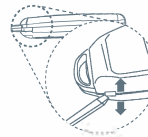


- 5 Press the locking key for 5 seconds till status light flickers, then press "Next"

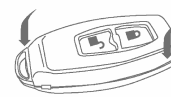


Replace battery

- 1 Remove the cover of the key fob.
- 2 Remove the mainboard from the housing.



- 3 Replace the battery and reinstall the cover.



Limited Warranty

1. For any defect in material and workmanship, the original purchaser of the product can:
 - 1) Return or ask for a replacement within 7 invoice days.
 - 2) Ask for a replacement within 15 invoice days.
 - 3) Ask for free repair in 365 invoice days.
2. This warranty does not cover defects caused by modification, alteration, misuse or physical abuse of the product.

Disclaimer

We continuously optimize products as new technologies and features are developed. For this reason, we reserve the right to make alterations to the products without prior notice.

FCC WARNING

This device complies with part 15 of the FCC Rules. Operation is subject to the following two conditions: (1) This device may not cause harmful interference, and (2) this device must accept any interference received, including interference that may cause undesired operation.

Note: This equipment has been tested and found to comply with the limits for a Class B digital device, pursuant to part 15 of the FCC Rules. These limits are designed to provide reasonable protection against harmful interference in a residential installation. This equipment generates, uses and can radiate radio frequency energy and, if not installed and used in accordance with the instructions, may cause harmful interference to radio communications. However, there is no guarantee that interference will not occur in a particular installation. If this equipment does cause harmful interference to radio or television reception, which can be determined by turning the equipment off and on, the user is encouraged to try to correct the interference by one or more of the following measures:

- Reorient or relocate the receiving antenna.
- Increase the separation between the equipment and receiver.
- Connect the equipment into an outlet on a circuit different from that to which the receiver is connected.
- Consult the dealer or an experienced radio/TV technician for help.

Note: The Grantee is not responsible for any changes or modifications not expressly approved by the party responsible for compliance. such modifications could void the user's authority to operate the equipment.

The device has been evaluated to meet general RF exposure requirement.

This equipment complies with FCC's RF radiation exposure limits set forth for an uncontrolled environment. This device and its antenna(s) must not be co-located or conjunction with any other antenna or transmitter.