



Appendix B. SAR Measurement Plots

Table of contents
Head SAR
Body Worn SAR
Hotspot SAR
Product Specific 10-g

Place of Testing: HUAWEI SAR/HAC Lab

Measurement Report for MGA-LX3, TILT, GSM 850, Channel 190 (836.6MHz)

Device under Test Properties

Model	DUT Type
MGA-LX3	Smart Phone

Exposure Conditions

Phantom Section, TSL	Position, Test Distance [mm]	Band	Group, UID	Frequency [MHz], Channel Number	Conversion Factor	TSL Conductivity [S/m]	TSL Permittivity
RightHead, HSL	TILT, 0.00	GSM 850	GSM, 10021-DAC	836.6, 190	9.54	0.930	41.2

Hardware Setup

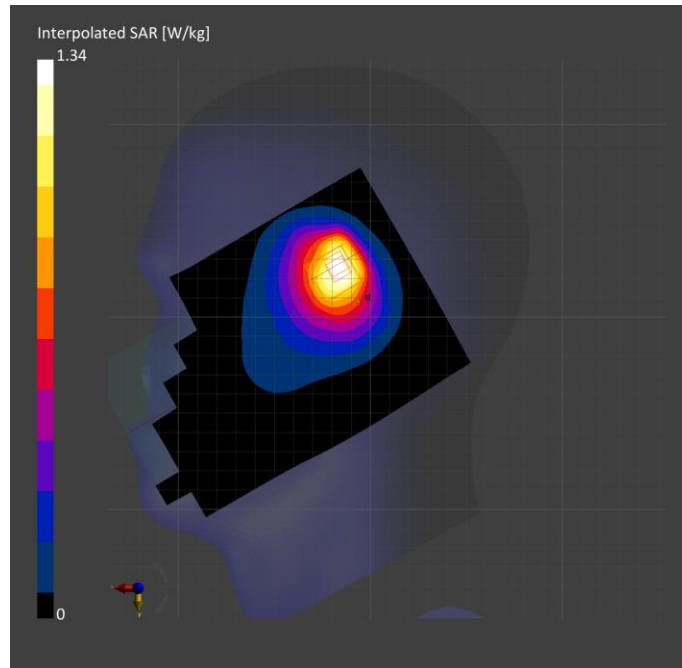
Phantom	Probe, Calibration Date	DAE, Calibration Date
Twin-SAM V8.0 (30deg probe tilt) - 1940	EX3DV4 - SN7505, 2021-04-28	DAE4 Sn1554, 2021-04-26

Scan Setup

	Area Scan	Zoom Scan
Grid Extents [mm]	120.0 x 210.0	32.0 x 32.0 x 30.0
Grid Steps [mm]	15.0 x 15.0	6.0 x 6.0 x 1.5
Sensor Surface [mm]	3.0	1.4
Graded Grid	Yes	Yes
Grading Ratio	1.5	1.5
MAIA	N/A	N/A
Surface Detection	VMS + 6p	All points
Scan Method	Measured	Measured

Measurement Results

	Area Scan	Zoom Scan
Date	2022-01-29	2022-01-29
psSAR1g [W/kg]	0.514	0.593
psSAR10g [W/kg]	0.329	0.320
Power Drift [dB]	-0.01	0.00
Power Scaling	Disabled	Disabled
Scaling Factor [dB]		
TSL Correction	No correction	No correction
M2/M1 [%]		75.4
Dist 3dB Peak [mm]		9.7



Place of Testing: HUAWEI SAR/HAC Lab

Measurement Report for MGA-LX3, BACK, GSM 850, Channel 190 (836.6MHz)

Device under Test Properties

Model	DUT Type
MGA-LX3	Smart Phone

Exposure Conditions

Phantom Section, TSL	Position, Test Distance [mm]	Band	Group, UID	Frequency [MHz], Channel Number	Conversion Factor	TSL Conductivity [S/m]	TSL Permittivity
Flat, HSL	BACK, 15.00	GSM 850	GSM, 10021-DAC	836.6, 190	9.54	0.915	40.7

Hardware Setup

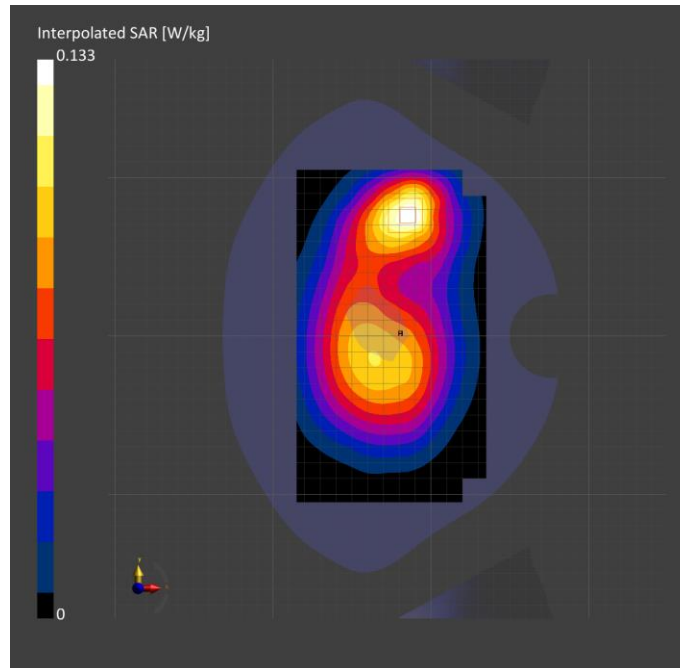
Phantom	Probe, Calibration Date	DAE, Calibration Date
Twin-SAM V8.0 (30deg probe tilt) - 1940	EX3DV4 - SN7505, 2021-04-28	DAE4 Sn1554, 2021-04-26

Scan Setup

	Area Scan	Zoom Scan
Grid Extents [mm]	120.0 x 210.0	32.0 x 32.0 x 30.0
Grid Steps [mm]	15.0 x 15.0	6.0 x 6.0 x 1.5
Sensor Surface [mm]	3.0	1.4
Graded Grid	Yes	Yes
Grading Ratio	1.5	1.5
MAIA	Y	Y
Surface Detection	All points	All points
Scan Method	Measured	Measured

Measurement Results

	Area Scan	Zoom Scan
Date	2022-01-17	2022-01-17
psSAR1g [W/kg]	0.115	0.093
psSAR10g [W/kg]	0.076	0.071
Power Drift [dB]	-0.06	-0.01
Power Scaling	Disabled	Disabled
Scaling Factor [dB]		
TSL Correction	No correction	No correction
M2/M1 [%]		88.5
Dist 3dB Peak [mm]		> 16.0



Place of Testing: HUAWEI SAR/HAC Lab

Measurement Report for MGA-LX3, BACK, GSM 850, Channel 190 (836.6MHz)

Device under Test Properties

Model	DUT Type
MGA-LX3	Smart Phone

Exposure Conditions

Phantom Section, TSL	Position, Test Distance [mm]	Band	Group, UID	Frequency [MHz], Channel Number	Conversion Factor	TSL Conductivity [S/m]	TSL Permittivity
Flat, HSL	BACK, 10.00	GSM 850	GSM, 10021-DAC	836.6, 190	9.54	0.915	40.7

Hardware Setup

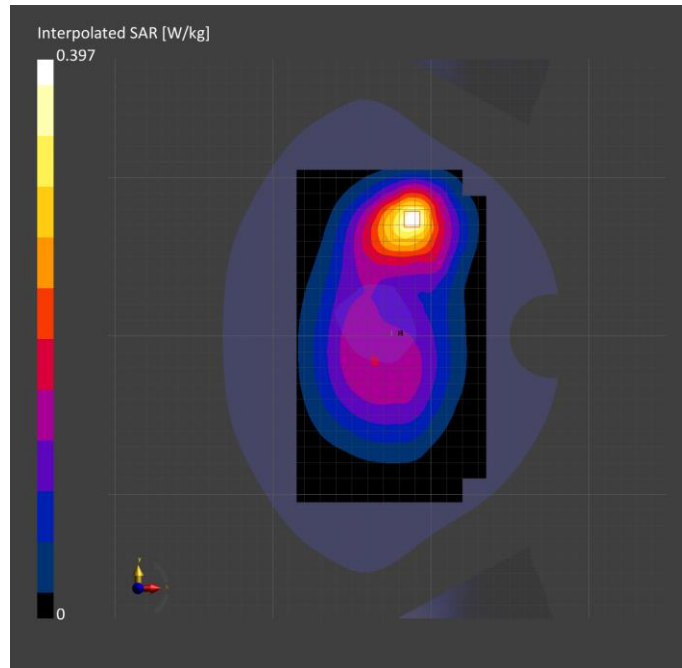
Phantom	Probe, Calibration Date	DAE, Calibration Date
Twin-SAM V8.0 (30deg probe tilt) - 1940	EX3DV4 - SN7505, 2021-04-28	DAE4 Sn1554, 2021-04-26

Scan Setup

	Area Scan	Zoom Scan
Grid Extents [mm]	120.0 x 210.0	32.0 x 32.0 x 30.0
Grid Steps [mm]	15.0 x 15.0	6.0 x 6.0 x 1.5
Sensor Surface [mm]	3.0	1.4
Graded Grid	Yes	Yes
Grading Ratio	1.5	1.5
MAIA	N/A	N/A
Surface Detection	All points	All points
Scan Method	Measured	Measured

Measurement Results

	Area Scan	Zoom Scan
Date	2022-01-17	2022-01-17
psSAR1g [W/kg]	0.217	0.217
psSAR10g [W/kg]	0.137	0.129
Power Drift [dB]	-0.02	0.01
Power Scaling	Disabled	Disabled
Scaling Factor [dB]		
TSL Correction	No correction	No correction
M2/M1 [%]		82.5
Dist 3dB Peak [mm]		14.0



Place of Testing: HUAWEI SAR/HAC Lab

Measurement Report for MGA-LX3, CHEEK, PCS 1900,Channel 661 (1880.0MHz)

Device under Test Properties

Model	DUT Type
MGA-LX3	Smart Phone

Exposure Conditions

Phantom Section, TSL	Position, Test Distance [mm]	Band	Group, UID	Frequency [MHz], Channel Number	Conversion Factor	TSL Conductivity [S/m]	TSL Permittivity
RightHead, HSL	CHEEK, 0.00	PCS 1900	GSM, 10021-DAC	1880.0, 661	7.83	1.442	39.2

Hardware Setup

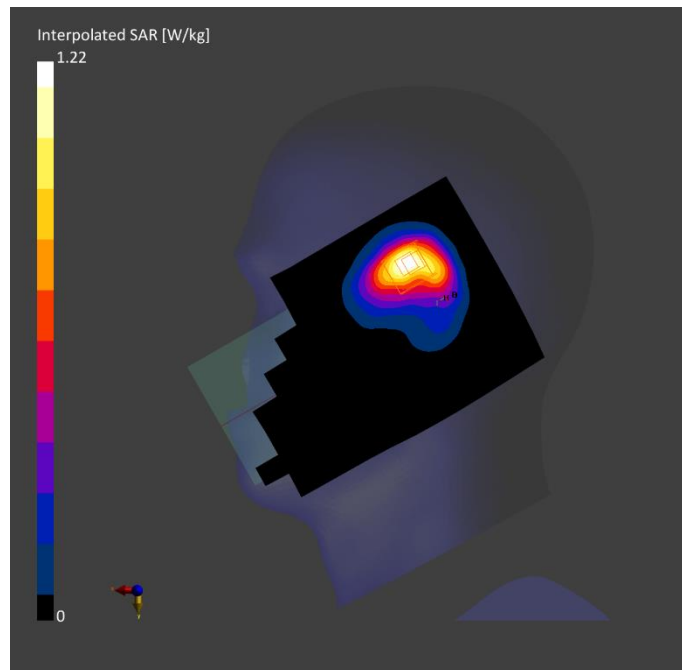
Phantom	Probe, Calibration Date	DAE, Calibration Date
Twin-SAM V8.0 (30deg probe tilt) - 1892	EX3DV4 - SN3736, 2021-03-03	DAE4 Sn852, 2021-04-26

Scan Setup

	Area Scan	Zoom Scan
Grid Extents [mm]	120.0 x 210.0	32.0 x 32.0 x 30.0
Grid Steps [mm]	15.0 x 15.0	6.0 x 6.0 x 1.5
Sensor Surface [mm]	3.0	1.4
Graded Grid	Yes	Yes
Grading Ratio	1.5	1.5
MAIA	N/A	N/A
Surface Detection	VMS + 6p	VMS + 6p
Scan Method	Measured	Measured

Measurement Results

	Area Scan	Zoom Scan
Date	2022-01-18	2022-01-18
psSAR1g [W/kg]	0.576	0.621
psSAR10g [W/kg]	0.314	0.335
Power Drift [dB]	0.01	-0.00
Power Scaling	Disabled	Disabled
Scaling Factor [dB]		
TSL Correction	No correction	No correction
M2/M1 [%]		79.1
Dist 3dB Peak [mm]		8.7



Place of Testing: HUAWEI SAR/HAC Lab

Measurement Report for MGA-LX3, BACK, PCS 1900, Channel 661 (1880.0MHz)

Device under Test Properties

Model	DUT Type
MGA-LX3	Smart Phone

Exposure Conditions

Phantom Section, TSL	Position, Test Distance [mm]	Band	Group, UID	Frequency [MHz], Channel Number	Conversion Factor	TSL Conductivity [S/m]	TSL Permittivity
Flat, HSL	BACK, 15.00	PCS 1900	GSM, 10021-DAC	1880.0, 661	7.83	1.442	39.2

Hardware Setup

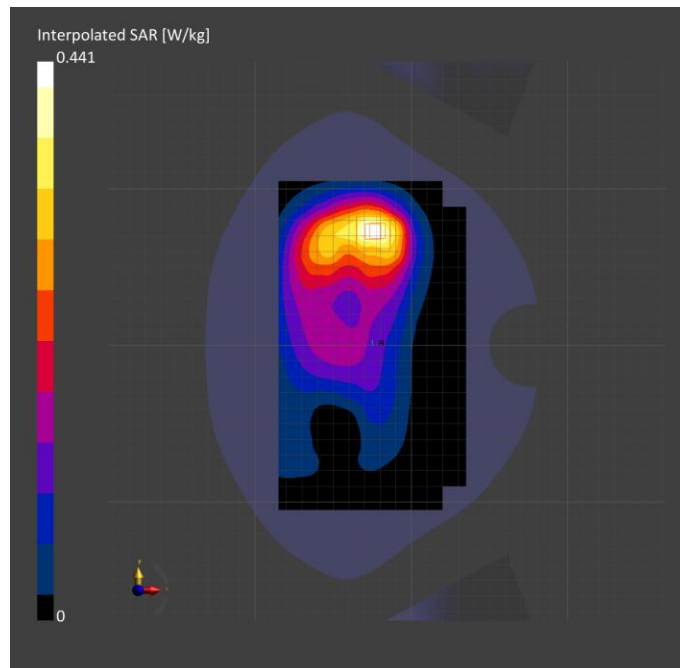
Phantom	Probe, Calibration Date	DAE, Calibration Date
Twin-SAM V8.0 (30deg probe tilt) - 1892	EX3DV4 - SN3736, 2021-03-03	DAE4 Sn852, 2021-04-26

Scan Setup

	Area Scan	Zoom Scan
Grid Extents [mm]	120.0 x 210.0	32.0 x 32.0 x 30.0
Grid Steps [mm]	15.0 x 15.0	6.0 x 6.0 x 1.5
Sensor Surface [mm]	3.0	1.4
Graded Grid	Yes	Yes
Grading Ratio	1.5	1.5
MAIA	Y	Y
Surface Detection	VMS + 6p	VMS + 6p
Scan Method	Measured	Measured

Measurement Results

	Area Scan	Zoom Scan
Date	2022-01-18	2022-01-18
psSAR1g [W/kg]	0.240	0.244
psSAR10g [W/kg]	0.140	0.140
Power Drift [dB]	-0.00	-0.01
Power Scaling	Disabled	Disabled
Scaling Factor [dB]		
TSL Correction	No correction	No correction
M2/M1 [%]		81.6
Dist 3dB Peak [mm]		13.4



Place of Testing: HUAWEI SAR/HAC Lab

Measurement Report for MGA-LX3, EDGE TOP, PCS 1900, Channel 661 (1880.0MHz)

Device under Test Properties

Model	DUT Type
MGA-LX3	Smart Phone

Exposure Conditions

Phantom Section, TSL	Position, Test Distance [mm]	Band	Group, UID	Frequency [MHz], Channel Number	Conversion Factor	TSL Conductivity [S/m]	TSL Permittivity
Flat, HSL	EDGE TOP, 10.00	PCS 1900	GSM, 10023-DAC	1880.0, 661	7.83	1.442	39.2

Hardware Setup

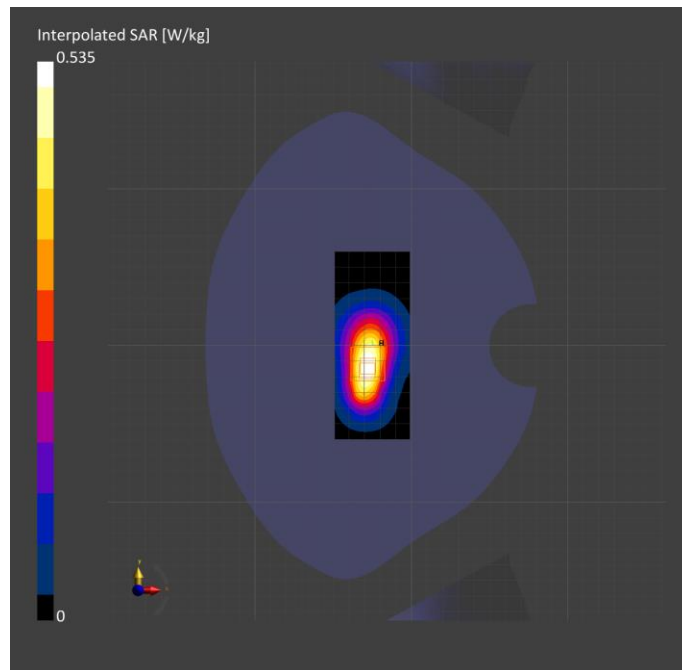
Phantom	Probe, Calibration Date	DAE, Calibration Date
Twin-SAM V8.0 (30deg probe tilt) - 1892	EX3DV4 - SN3736, 2021-03-03	DAE4 Sn852, 2021-04-26

Scan Setup

	Area Scan	Zoom Scan
Grid Extents [mm]	48.0 x 120.0	32.0 x 32.0 x 30.0
Grid Steps [mm]	8.0 x 15.0	6.0 x 6.0 x 1.5
Sensor Surface [mm]	3.0	1.4
Graded Grid	Yes	Yes
Grading Ratio	1.5	1.5
MAIA	Y	N/A
Surface Detection	VMS + 6p	VMS + 6p
Scan Method	Measured	Measured

Measurement Results

	Area Scan	Zoom Scan
Date	2022-01-18	2022-01-18
psSAR1g [W/kg]	0.275	0.278
psSAR10g [W/kg]	0.149	0.148
Power Drift [dB]	-0.02	0.00
Power Scaling	Disabled	Disabled
Scaling Factor [dB]		
TSL Correction	No correction	No correction
M2/M1 [%]		80.0
Dist 3dB Peak [mm]		9.6



Place of Testing: HUAWEI SAR/HAC Lab

Measurement Report for MGA-LX3, TILT, Band 2, UTRA/FDD, Channel 9400 (1880.0MHz)

Device under Test Properties

Model	DUT Type
MGA-LX3	Smart Phone

Exposure Conditions

Phantom Section, TSL	Position, Test Distance [mm]	Band	Group, UID	Frequency [MHz], Channel Number	Conversion Factor	TSL Conductivity [S/m]	TSL Permittivity
RightHead, HSL	TILT, 0.00	Band 2, UTRA/FDD	WCDMA, 10011-CAB	1880.0, 9400	7.83	1.442	39.2

Hardware Setup

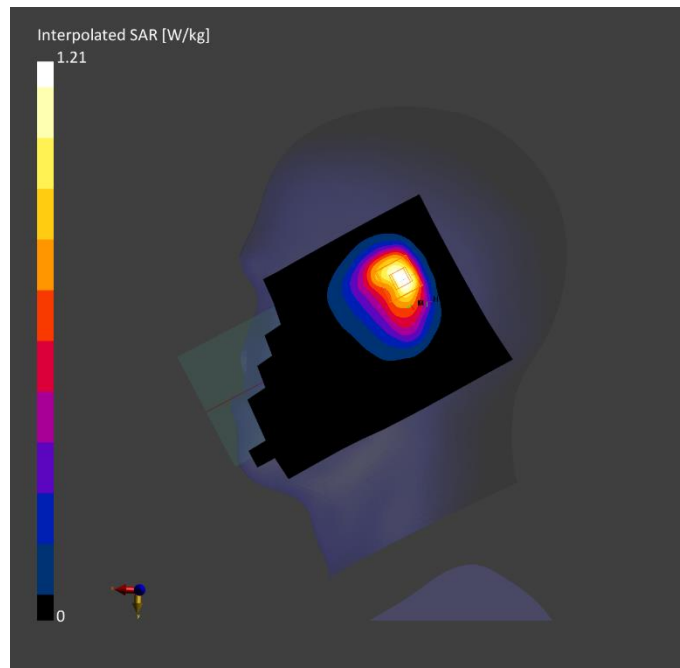
Phantom	Probe, Calibration Date	DAE, Calibration Date
Twin-SAM V8.0 (30deg probe tilt) - 1892	EX3DV4 - SN3736, 2021-03-03	DAE4 Sn852, 2021-04-26

Scan Setup

	Area Scan	Zoom Scan
Grid Extents [mm]	120.0 x 210.0	32.0 x 32.0 x 30.0
Grid Steps [mm]	15.0 x 15.0	6.0 x 6.0 x 1.5
Sensor Surface [mm]	3.0	1.4
Graded Grid	Yes	Yes
Grading Ratio	1.5	1.5
MAIA	N/A	N/A
Surface Detection	VMS + 6p	VMS + 6p
Scan Method	Measured	Measured

Measurement Results

	Area Scan	Zoom Scan
Date	2022-01-18	2022-01-18
psSAR1g [W/kg]	0.504	0.621
psSAR10g [W/kg]	0.277	0.313
Power Drift [dB]	0.00	-0.02
Power Scaling	Disabled	Disabled
Scaling Factor [dB]		
TSL Correction	No correction	No correction
M2/M1 [%]		80.8
Dist 3dB Peak [mm]		9.7



Place of Testing: HUAWEI SAR/HAC Lab

Measurement Report for MGA-LX3, BACK, Band 2, UTRA/FDD, Channel 9400 (1880.0MHz)

Device under Test Properties

Model	DUT Type
MGA-LX3	Smart Phone

Exposure Conditions

Phantom Section, TSL	Position, Test Distance [mm]	Band	Group, UID	Frequency [MHz], Channel Number	Conversion Factor	TSL Conductivity [S/m]	TSL Permittivity
Flat, HSL	BACK, 15.00	Band 2, UTRA/FDD	WCDMA, 10011-CAB	1880.0, 9400	7.83	1.442	39.2

Hardware Setup

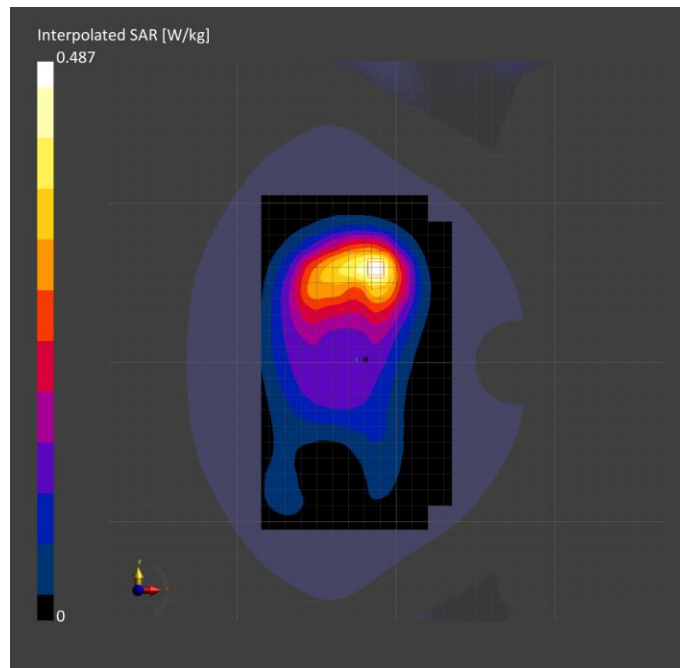
Phantom	Probe, Calibration Date	DAE, Calibration Date
Twin-SAM V8.0 (30deg probe tilt) - 1892	EX3DV4 - SN3736, 2021-03-03	DAE4 Sn852, 2021-04-26

Scan Setup

	Area Scan	Zoom Scan
Grid Extents [mm]	120.0 x 210.0	32.0 x 32.0 x 30.0
Grid Steps [mm]	15.0 x 15.0	6.0 x 6.0 x 1.5
Sensor Surface [mm]	3.0	1.4
Graded Grid	Yes	Yes
Grading Ratio	1.5	1.5
MAIA	Y	Y
Surface Detection	VMS + 6p	VMS + 6p
Scan Method	Measured	Measured

Measurement Results

	Area Scan	Zoom Scan
Date	2022-01-18	2022-01-18
psSAR1g [W/kg]	0.270	0.271
psSAR10g [W/kg]	0.154	0.154
Power Drift [dB]	0.02	-0.00
Power Scaling	Disabled	Disabled
Scaling Factor [dB]		
TSL Correction	No correction	No correction
M2/M1 [%]		82.0
Dist 3dB Peak [mm]		13.4



Place of Testing: HUAWEI SAR/HAC Lab

Measurement Report for MGA-LX3, EDGE TOP, Band 2, UTRA/FDD, Channel 9400 (1880.0MHz)

Device under Test Properties

Model	DUT Type
MGA-LX3	Smart Phone

Exposure Conditions

Phantom Section, TSL	Position, Test Distance [mm]	Band	Group, UID	Frequency [MHz], Channel Number	Conversion Factor	TSL Conductivity [S/m]	TSL Permittivity
Flat, HSL	EDGE TOP, 10.00	Band 2, UTRA/FDD	WCDMA, 10011-CAB	1880.0, 9400	7.83	1.442	39.2

Hardware Setup

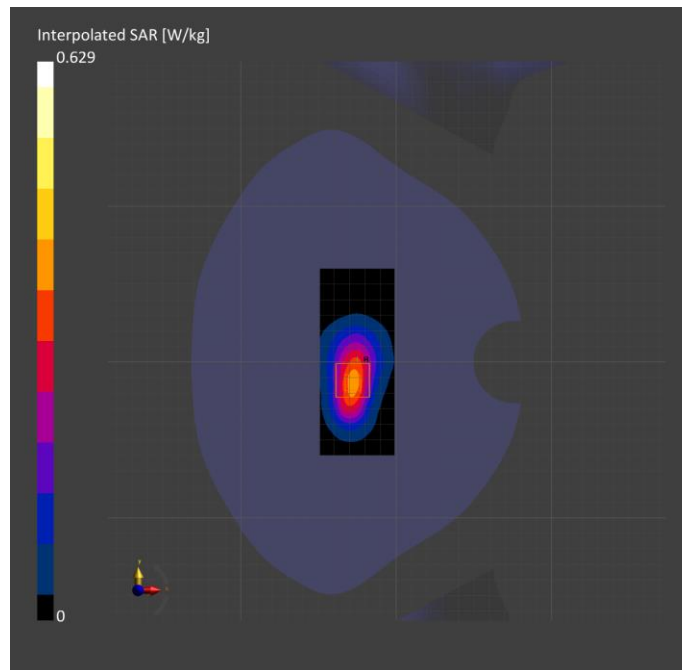
Phantom	Probe, Calibration Date	DAE, Calibration Date
Twin-SAM V8.0 (30deg probe tilt) - 1892	EX3DV4 - SN3736, 2021-03-03	DAE4 Sn852, 2021-04-26

Scan Setup

	Area Scan	Zoom Scan
Grid Extents [mm]	48.0 x 120.0	32.0 x 32.0 x 30.0
Grid Steps [mm]	8.0 x 15.0	6.0 x 6.0 x 1.5
Sensor Surface [mm]	3.0	1.4
Graded Grid	Yes	Yes
Grading Ratio	1.5	1.5
MAIA	N/A	N/A
Surface Detection	VMS + 6p	VMS + 6p
Scan Method	Measured	Measured

Measurement Results

	Area Scan	Zoom Scan
Date	2022-01-18	2022-01-18
psSAR1g [W/kg]	0.322	0.324
psSAR10g [W/kg]	0.174	0.173
Power Drift [dB]	-0.01	0.03
Power Scaling	Disabled	Disabled
Scaling Factor [dB]		
TSL Correction	No correction	No correction
M2/M1 [%]		79.8
Dist 3dB Peak [mm]		9.7



Place of Testing: HUAWEI SAR/HAC Lab

Measurement Report for MGA-LX3, TILT, Band 4, UTRA/FDD, Channel 1413 (1732.6MHz)

Device under Test Properties

Model	DUT Type
MGA-LX3	Smart Phone

Exposure Conditions

Phantom Section, TSL	Position, Test Distance [mm]	Band	Group, UID	Frequency [MHz], Channel Number	Conversion Factor	TSL Conductivity [S/m]	TSL Permittivity
RightHead, HSL	TILT, 0.00	Band 4, UTRA/FDD	WCDMA, 10011-CAB	1732.6, 1413	8.04	1.369	39.5

Hardware Setup

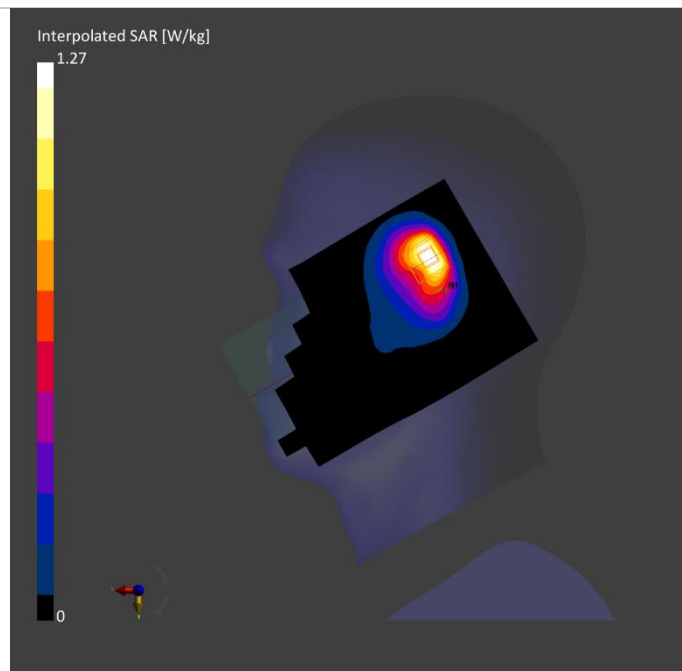
Phantom	Probe, Calibration Date	DAE, Calibration Date
Twin-SAM V8.0 (30deg probe tilt) - 1892	EX3DV4 - SN3736, 2021-03-03	DAE4 Sn852, 2021-04-26

Scan Setup

	Area Scan	Zoom Scan
Grid Extents [mm]	120.0 x 210.0	32.0 x 32.0 x 30.0
Grid Steps [mm]	15.0 x 15.0	6.0 x 6.0 x 1.5
Sensor Surface [mm]	3.0	1.4
Graded Grid	Yes	Yes
Grading Ratio	1.5	1.5
MAIA	N/A	N/A
Surface Detection	VMS + 6p	VMS + 6p
Scan Method	Measured	Measured

Measurement Results

	Area Scan	Zoom Scan
Date	2022-01-16	2022-01-16
psSAR1g [W/kg]	0.534	0.648
psSAR10g [W/kg]	0.294	0.325
Power Drift [dB]	0.02	0.01
Power Scaling	Disabled	Disabled
Scaling Factor [dB]		
TSL Correction	No correction	No correction
M2/M1 [%]		80.1
Dist 3dB Peak [mm]		8.8



Place of Testing: HUAWEI SAR/HAC Lab

Measurement Report for MGA-LX3, BACK, Band 4, UTRA/FDD, Channel 1413 (1732.6MHz)

Device under Test Properties

Model	DUT Type
MGA-LX3	Smart Phone

Exposure Conditions

Phantom Section, TSL	Position, Test Distance [mm]	Band	Group, UID	Frequency [MHz], Channel Number	Conversion Factor	TSL Conductivity [S/m]	TSL Permittivity
Flat, HSL	BACK, 15.00	Band 4, UTRA/FDD	WCDMA, 10011-CAB	1732.6, 1413	8.04	1.369	39.5

Hardware Setup

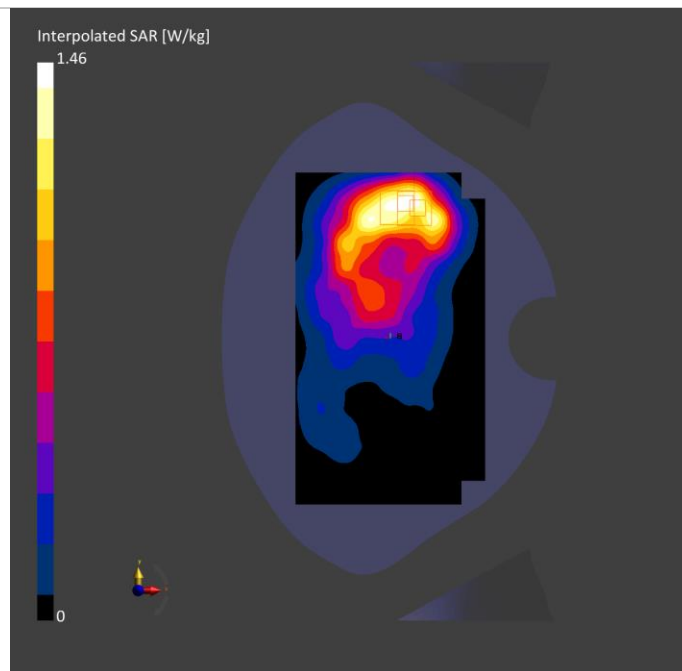
Phantom	Probe, Calibration Date	DAE, Calibration Date
Twin-SAM V8.0 (30deg probe tilt) - 1892	EX3DV4 - SN3736, 2021-03-03	DAE4 Sn852, 2021-04-26

Scan Setup

	Area Scan	Zoom Scan
Grid Extents [mm]	120.0 x 210.0	32.0 x 32.0 x 30.0
Grid Steps [mm]	15.0 x 15.0	6.0 x 6.0 x 1.5
Sensor Surface [mm]	3.0	1.4
Graded Grid	Yes	Yes
Grading Ratio	1.5	1.5
MAIA	N/A	N/A
Surface Detection	VMS + 6p	VMS + 6p
Scan Method	Measured	Measured

Measurement Results

	Area Scan	Zoom Scan
Date	2022-01-16	2022-01-16
psSAR1g [W/kg]	0.506	0.540
psSAR10g [W/kg]	0.308	0.307
Power Drift [dB]	1.05	0.05
Power Scaling	Disabled	Disabled
Scaling Factor [dB]		
TSL Correction	No correction	No correction
M2/M1 [%]		57.7
Dist 3dB Peak [mm]		12.0



Place of Testing: HUAWEI SAR/HAC Lab

Measurement Report for MGA-LX3, BACK, Band 4, UTRA/FDD, Channel 1413 (1732.6MHz)

Device under Test Properties

Model	DUT Type
MGA-LX3	Smart Phone

Exposure Conditions

Phantom Section, TSL	Position, Test Distance [mm]	Band	Group, UID	Frequency [MHz], Channel Number	Conversion Factor	TSL Conductivity [S/m]	TSL Permittivity
Flat, HSL	BACK, 10.00	Band 4, UTRA/FDD	WCDMA, 10011-CAB	1732.6, 1413	8.04	1.369	39.5

Hardware Setup

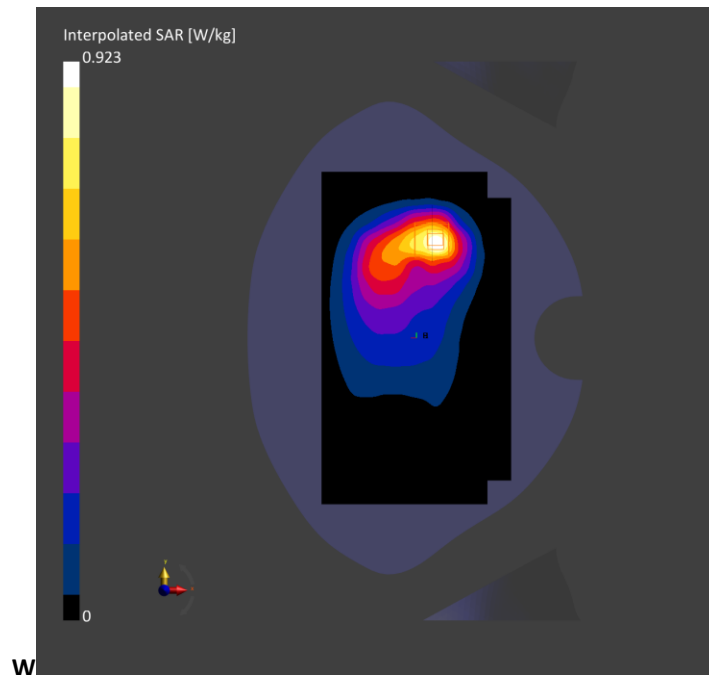
Phantom	Probe, Calibration Date	DAE, Calibration Date
Twin-SAM V8.0 (30deg probe tilt) - 1892	EX3DV4 - SN3736, 2021-03-03	DAE4 Sn852, 2021-04-26

Scan Setup

	Area Scan	Zoom Scan
Grid Extents [mm]	120.0 x 210.0	32.0 x 32.0 x 30.0
Grid Steps [mm]	15.0 x 15.0	6.0 x 6.0 x 1.5
Sensor Surface [mm]	3.0	1.4
Graded Grid	Yes	Yes
Grading Ratio	1.5	1.5
MAIA	N/A	N/A
Surface Detection	VMS + 6p	VMS + 6p
Scan Method	Measured	Measured

Measurement Results

	Area Scan	Zoom Scan
Date	2022-01-16	2022-01-16
psSAR1g [W/kg]	0.457	0.485
psSAR10g [W/kg]	0.255	0.257
Power Drift [dB]	0.03	0.04
Power Scaling	Disabled	Disabled
Scaling Factor [dB]		
TSL Correction	No correction	No correction
M2/M1 [%]		80.8
Dist 3dB Peak [mm]		10.7



Place of Testing: HUAWEI SAR/HAC Lab

Measurement Report for MGA-LX3, EDGE TOP, Band 4, UTRA/FDD, Channel 1413 (1732.6MHz)

Device under Test Properties

Model	DUT Type
MGA-LX3	Smart Phone

Exposure Conditions

Phantom Section, TSL	Position, Test Distance [mm]	Band	Group, UID	Frequency [MHz], Channel Number	Conversion Factor	TSL Conductivity [S/m]	TSL Permittivity
Flat, HSL	EDGE TOP, 0.00	Band 4, UTRA/FDD	WCDMA, 10011-CAB	1732.6, 1413	8.04	1.36	39.5

Hardware Setup

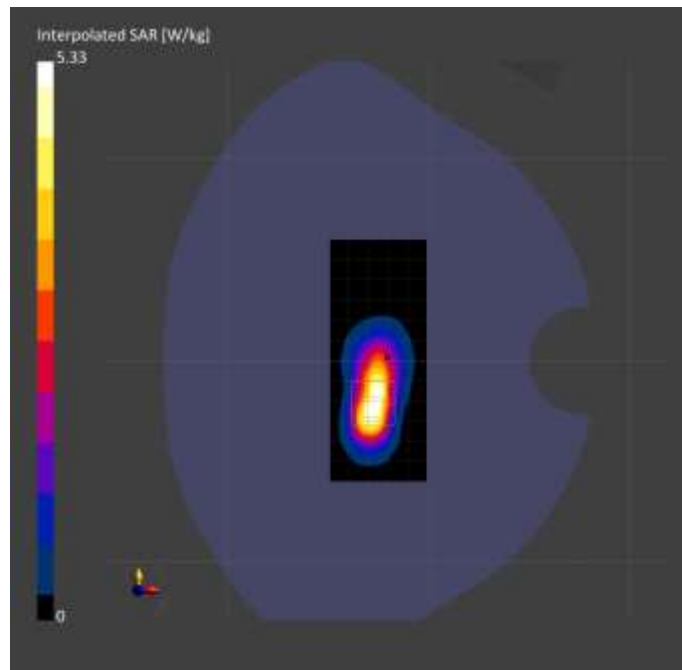
Phantom	Probe, Calibration Date	DAE, Calibration Date
Twin-SAM V8.0 (30deg probe tilt) - 1892	EX3DV4 - SN3736, 2021-03-03	DAE4 Sn852, 2021-04-26

Scan Setup

	Area Scan	Zoom Scan
Grid Extents [mm]	48.0 x 120.0	32.0 x 32.0 x 30.0
Grid Steps [mm]	8.0 x 15.0	4.0 x 4.0 x 1.4
Sensor Surface [mm]	3.0	1.4
Graded Grid	Yes	Yes
Grading Ratio	1.5	1.4
MAIA	N/A	N/A
Surface Detection	VMS + 6p	VMS + 6p
Scan Method	Measured	Measured

Measurement Results

	Area Scan	Zoom Scan
Date	2022-01-16	2022-01-16
psSAR1g [W/kg]	4.17	4.61
psSAR10g [W/kg]	1.99	1.89
Power Drift [dB]	0.01	-0.01
Power Scaling	Disabled	Disabled
Scaling Factor [dB]		
TSL Correction	No correction	No correction
M2/M1 [%]		66.2
Dist 3dB Peak [mm]		4.8



Place of Testing: HUAWEI SAR/HAC Lab

Measurement Report for MGA-LX3, CHEEK, Band 5, UTRA/FDD, Channel 4182 (836.4MHz)

Device under Test Properties

Model	DUT Type
MGA-LX3	Smart Phone

Exposure Conditions

Phantom Section, TSL	Position, Test Distance [mm]	Band	Group, UID	Frequency [MHz], Channel Number	Conversion Factor	TSL Conductivity [S/m]	TSL Permittivity
RightHead, HSL	CHEEK, 0.00	Band 5, UTRA/FDD	WCDMA, 10011-CAB	836.4, 4182	9.54	0.915	40.7

Hardware Setup

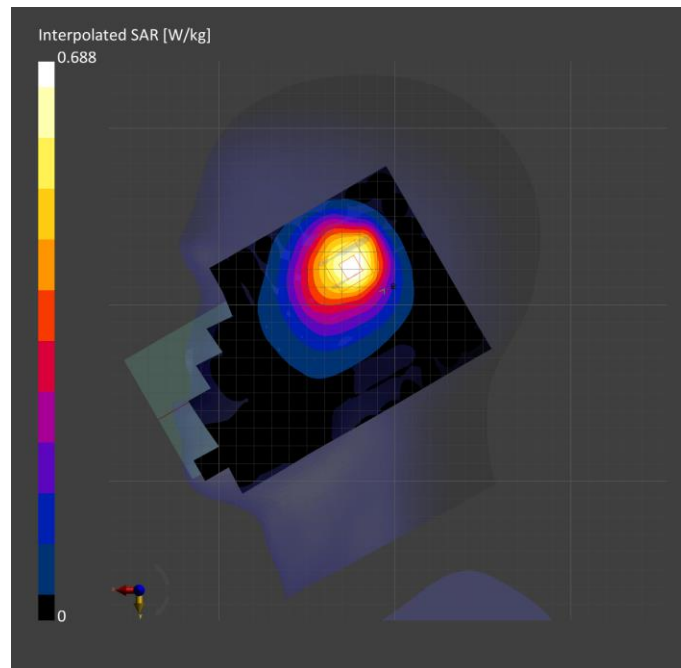
Phantom	Probe, Calibration Date	DAE, Calibration Date
Twin-SAM V8.0 (30deg probe tilt) - 1940	EX3DV4 - SN7505, 2021-04-28	DAE4 Sn1554, 2021-04-26

Scan Setup

	Area Scan	Zoom Scan
Grid Extents [mm]	120.0 x 210.0	32.0 x 32.0 x 30.0
Grid Steps [mm]	15.0 x 15.0	6.0 x 6.0 x 1.5
Sensor Surface [mm]	3.0	1.4
Graded Grid	Yes	Yes
Grading Ratio	1.5	1.5
MAIA	N/A	N/A
Surface Detection	All points	All points
Scan Method	Measured	Measured

Measurement Results

	Area Scan	Zoom Scan
Date	2022-01-19	2022-01-19
psSAR1g [W/kg]	0.583	0.630
psSAR10g [W/kg]	0.381	0.362
Power Drift [dB]	-0.01	0.00
Power Scaling	Disabled	Disabled
Scaling Factor [dB]		
TSL Correction	No correction	No correction
M2/M1 [%]		79.7
Dist 3dB Peak [mm]		8.1



Place of Testing: HUAWEI SAR/HAC Lab

Measurement Report for MGA-LX3, BACK, Band 5, UTRA/FDD, Channel 4182 (836.4MHz)

Device under Test Properties

Model	DUT Type
MGA-LX3	Smart Phone

Exposure Conditions

Phantom Section, TSL	Position, Test Distance [mm]	Band	Group, UID	Frequency [MHz], Channel Number	Conversion Factor	TSL Conductivity [S/m]	TSL Permittivity
Flat, HSL	BACK, 15.00	Band 5, UTRA/FDD	WCDMA, 10011-CAB	836.4, 4182	9.54	0.915	40.7

Hardware Setup

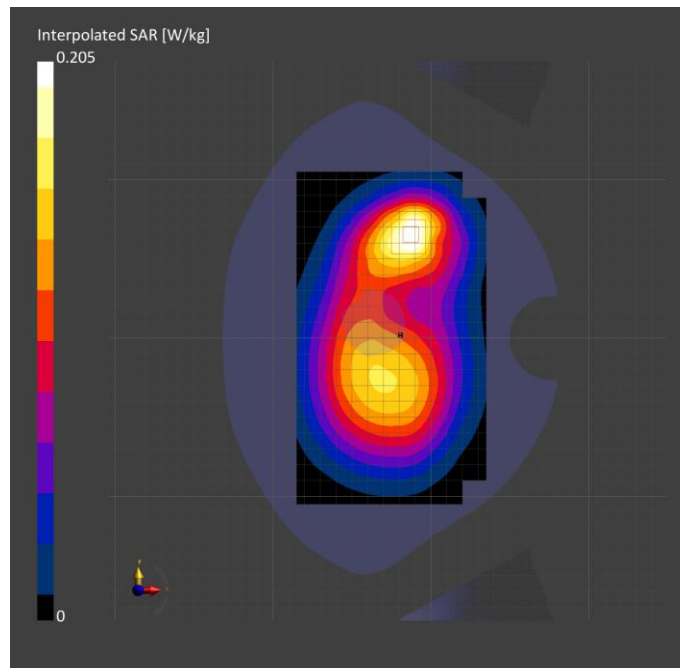
Phantom	Probe, Calibration Date	DAE, Calibration Date
Twin-SAM V8.0 (30deg probe tilt) - 1940	EX3DV4 - SN7505, 2021-04-28	DAE4 Sn1554, 2021-04-26

Scan Setup

	Area Scan	Zoom Scan
Grid Extents [mm]	120.0 x 210.0	32.0 x 32.0 x 30.0
Grid Steps [mm]	15.0 x 15.0	6.0 x 6.0 x 1.5
Sensor Surface [mm]	3.0	1.4
Graded Grid	Yes	Yes
Grading Ratio	1.5	1.5
MAIA	N/A	Y
Surface Detection	All points	All points
Scan Method	Measured	Measured

Measurement Results

	Area Scan	Zoom Scan
Date	2022-01-19	2022-01-19
psSAR1g [W/kg]	0.181	0.141
psSAR10g [W/kg]	0.120	0.107
Power Drift [dB]	-0.23	0.00
Power Scaling	Disabled	Disabled
Scaling Factor [dB]		
TSL Correction	No correction	No correction
M2/M1 [%]		88.3
Dist 3dB Peak [mm]		> 16.0



Place of Testing: HUAWEI SAR/HAC Lab

Measurement Report for MGA-LX3, BACK, Band 5, UTRA/FDD, Channel 4182 (836.4MHz)

Device under Test Properties

Model	DUT Type
MGA-LX3	Smart Phone

Exposure Conditions

Phantom Section, TSL	Position, Test Distance [mm]	Band	Group, UID	Frequency [MHz], Channel Number	Conversion Factor	TSL Conductivity [S/m]	TSL Permittivity
Flat, HSL	BACK, 10.00	Band 5, UTRA/FDD	WCDMA, 10011-CAB	836.4, 4182	9.54	0.915	40.7

Hardware Setup

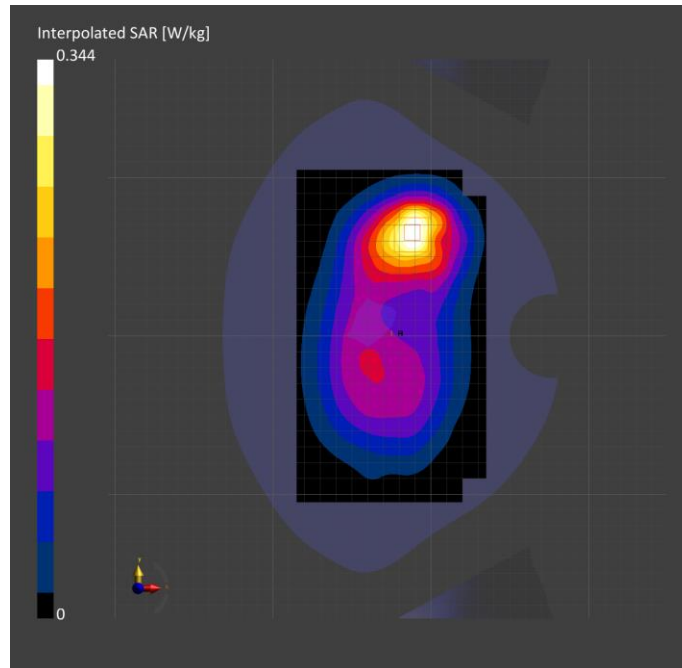
Phantom	Probe, Calibration Date	DAE, Calibration Date
Twin-SAM V8.0 (30deg probe tilt) - 1940	EX3DV4 - SN7505, 2021-04-28	DAE4 Sn1554, 2021-04-26

Scan Setup

	Area Scan	Zoom Scan
Grid Extents [mm]	120.0 x 210.0	32.0 x 32.0 x 30.0
Grid Steps [mm]	15.0 x 15.0	6.0 x 6.0 x 1.5
Sensor Surface [mm]	3.0	1.4
Graded Grid	Yes	Yes
Grading Ratio	1.5	1.5
MAIA	N/A	N/A
Surface Detection	All points	All points
Scan Method	Measured	Measured

Measurement Results

	Area Scan	Zoom Scan
Date	2022-01-19	2022-01-19
psSAR1g [W/kg]	0.302	0.307
psSAR10g [W/kg]	0.196	0.185
Power Drift [dB]	-0.05	-0.02
Power Scaling	Disabled	Disabled
Scaling Factor [dB]		
TSL Correction	No correction	No correction
M2/M1 [%]		82.6
Dist 3dB Peak [mm]		14.5



Place of Testing: HUAWEI SAR/HAC Lab

Measurement Report for MGA-LX3, TILT, Band 2, E-UTRA/FDD, Channel 18700 (1860.0MHz)

Device under Test Properties

Model	DUT Type
MGA-LX3	Smart Phone

Exposure Conditions

Phantom Section, TSL	Position, Test Distance [mm]	Band	Group, UID	Frequency [MHz], Channel Number	Conversion Factor	TSL Conductivity [S/m]	TSL Permittivity
RightHead, HSL	TILT, 0.00	Band 2, E-UTRA/FDD	LTE-FDD, 10297-AAD	1860.0, 18700	7.83	1.43	39.2

Hardware Setup

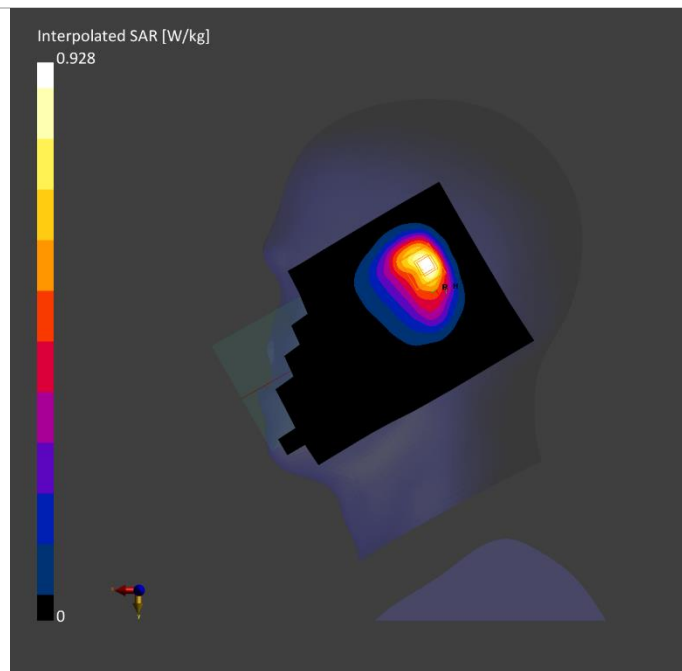
Phantom	Probe, Calibration Date	DAE, Calibration Date
Twin-SAM V8.0 (30deg probe tilt) - 1892	EX3DV4 - SN3736, 2021-03-03	DAE4 Sn852, 2021-04-26

Scan Setup

	Area Scan	Zoom Scan
Grid Extents [mm]	120.0 x 210.0	32.0 x 32.0 x 30.0
Grid Steps [mm]	15.0 x 15.0	6.0 x 6.0 x 1.5
Sensor Surface [mm]	3.0	1.4
Graded Grid	Yes	Yes
Grading Ratio	1.5	1.5
MAIA	N/A	N/A
Surface Detection	VMS + 6p	VMS + 6p
Scan Method	Measured	Measured

Measurement Results

	Area Scan	Zoom Scan
Date	2022-01-18	2022-01-18
psSAR1g [W/kg]	0.388	0.477
psSAR10g [W/kg]	0.211	0.239
Power Drift [dB]	0.00	0.00
Power Scaling	Disabled	Disabled
Scaling Factor [dB]		
TSL Correction	No correction	No correction
M2/M1 [%]		80.4
Dist 3dB Peak [mm]		9.7



Place of Testing: HUAWEI SAR/HAC Lab

Measurement Report for MGA-LX3, BACK, Band 2, E-UTRA/FDD, Channel 18900 (1880.0MHz)

Device under Test Properties

Model	DUT Type
MGA-LX3	Smart Phone

Exposure Conditions

Phantom Section, TSL	Position, Test Distance [mm]	Band	Group, UID	Frequency [MHz], Channel Number	Conversion Factor	TSL Conductivity [S/m]	TSL Permittivity
Flat, HSL	BACK, 15.00	Band 2, E-UTRA/FDD	LTE-FDD, 10169-CAE	1880.0, 18900	7.83	1.44	39.2

Hardware Setup

Phantom	Probe, Calibration Date	DAE, Calibration Date
Twin-SAM V8.0 (30deg probe tilt) - 1892	EX3DV4 - SN3736, 2021-03-03	DAE4 Sn852, 2021-04-26

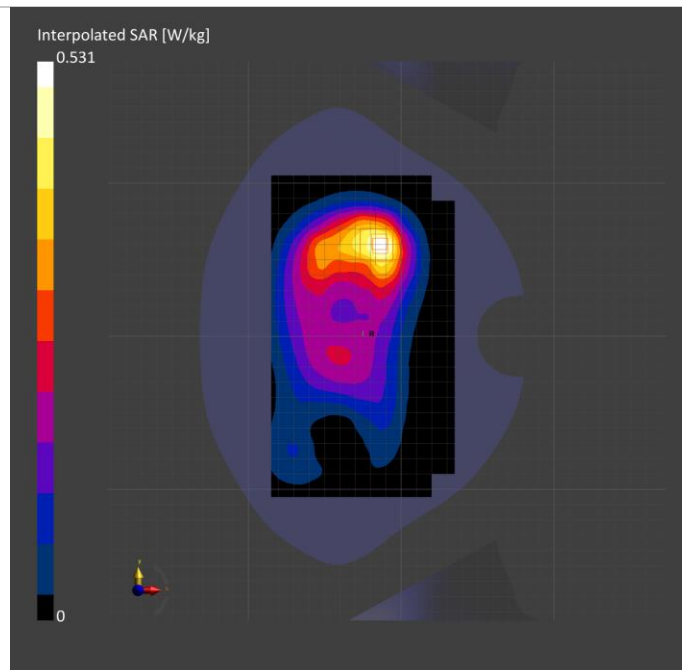
Scan Setup

	Area Scan	Zoom Scan
Grid Extents [mm]	120.0 x 210.0	32.0 x 32.0 x 30.0
Grid Steps [mm]	15.0 x 15.0	6.0 x 6.0 x 1.5
Sensor Surface [mm]	3.0	1.4
Graded Grid	Yes	Yes
Grading Ratio	1.5	1.5
MAIA	Y	N/A
Surface Detection	VMS + 6p	VMS + 6p
Scan Method	Measured	Measured

Measurement Results

	Area Scan	Zoom Scan
Date	2022-01-18	2022-01-18
psSAR1g [W/kg]	0.285	0.292
psSAR10g [W/kg]	0.164	0.165
Power Drift [dB]	0.04	0.00
Power Scaling	Disabled	Disabled
Scaling Factor [dB]		
TSL Correction	No correction	No correction
M2/M1 [%]		81.6
Dist 3dB Peak [mm]		13.4

W



Place of Testing: HUAWEI SAR/HAC Lab

Measurement Report for MGA-LX3, EDGE TOP, Band 2, E-UTRA/FDD, Channel 18900 (1880.0MHz)

Device under Test Properties

Model	DUT Type
MGA-LX3	Smart Phone

Exposure Conditions

Phantom Section, TSL	Position, Test Distance [mm]	Band	Group, UID	Frequency [MHz], Channel Number	Conversion Factor	TSL Conductivity [S/m]	TSL Permittivity
Flat, HSL	EDGE TOP, 10.00	Band 2, E-UTRA/FDD	LTE-FDD, 10169-CAE	1880.0, 18900	7.83	1.44	39.2

Hardware Setup

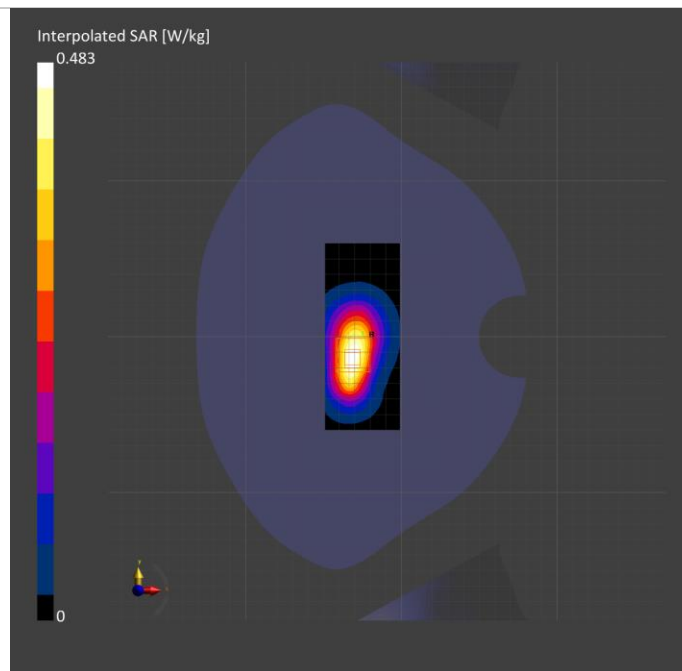
Phantom	Probe, Calibration Date	DAE, Calibration Date
Twin-SAM V8.0 (30deg probe tilt) - 1892	EX3DV4 - SN3736, 2021-03-03	DAE4 Sn852, 2021-04-26

Scan Setup

	Area Scan	Zoom Scan
Grid Extents [mm]	48.0 x 120.0	32.0 x 32.0 x 30.0
Grid Steps [mm]	8.0 x 15.0	6.0 x 6.0 x 1.5
Sensor Surface [mm]	3.0	1.4
Graded Grid	Yes	Yes
Grading Ratio	1.5	1.5
MAIA	Y	N/A
Surface Detection	VMS + 6p	VMS + 6p
Scan Method	Measured	Measured

Measurement Results

	Area Scan	Zoom Scan
Date	2022-01-18	2022-01-18
psSAR1g [W/kg]	0.250	0.251
psSAR10g [W/kg]	0.136	0.135
Power Drift [dB]	-0.06	-0.08
Power Scaling	Disabled	Disabled
Scaling Factor [dB]		
TSL Correction	No correction	No correction
M2/M1 [%]		80.0
Dist 3dB Peak [mm]		9.7



Place of Testing: HUAWEI SAR/HAC Lab

Measurement Report for MGA-LX3, CHEEK, Band 5, E-UTRA/FDD, Channel 20450 (829.0MHz)

Device under Test Properties

Model	DUT Type
MGA-LX3	Smart Phone

Exposure Conditions

Phantom Section, TSL	Position, Test Distance [mm]	Band	Group, UID	Frequency [MHz], Channel Number	Conversion Factor	TSL Conductivity [S/m]	TSL Permittivity
RightHead, HSL	CHEEK, 0.00	Band 5, E-UTRA/FDD	LTE-FDD, 10154-CAG	829.0, 20450	9.54	0.911	40.7

Hardware Setup

Phantom	Probe, Calibration Date	DAE, Calibration Date
Twin-SAM V8.0 (30deg probe tilt) - 1940	EX3DV4 - SN7505, 2021-04-28	DAE4 Sn1554, 2021-04-26

Scan Setup

	Area Scan	Zoom Scan
Grid Extents [mm]	120.0 x 210.0	32.0 x 32.0 x 30.0
Grid Steps [mm]	15.0 x 15.0	6.0 x 6.0 x 1.5
Sensor Surface [mm]	3.0	1.4
Graded Grid	Yes	Yes
Grading Ratio	1.5	1.5
MAIA	N/A	N/A
Surface Detection	All points	All points
Scan Method	Measured	Measured

Measurement Results

	Area Scan	Zoom Scan
Date	2022-01-17	2022-01-17
psSAR1g [W/kg]	0.659	0.693
psSAR10g [W/kg]	0.423	0.397
Power Drift [dB]	-0.02	0.00
Power Scaling	Disabled	Disabled
Scaling Factor [dB]		
TSL Correction	No correction	No correction
M2/M1 [%]		78.3
Dist 3dB Peak [mm]		10.4

