



IPS Beacon Informations

The **IPS_Beacon** is an ultra low power Bluetooth Beacon Tag that is intended for indoor industrial location applications. Based on **Bluetooth Low Energy 4.2** technology implemented by TPL Systèmes, it has excellent radio performance and a very long battery life.



Security instructions and first operations

- ! Read the installation manual before first operations.
- ! For safety and CE compliancy reasons, unauthorized conversion and/or modification of the product is prohibited.
- ! Use the equipment with supplied accessories only
- ! Follow safety instructions for the use of the Li-SOCl₂ battery.
- ! Do not use the product if it is visibly damaged.
- ! The use of this radio equipment in the proximity of other electrical equipment, or metallic surfaces, or influenced by architectural obstacles may affect operation or radio performances.

RF Specifications

Frequency band:	ISM 2.4GHz
Modulation:	Bluetooth Low Energy (BLE®) 4.2
Transmitter RF power:	<2.5mW (+4dBm) e.i.r.p.

Declaration of Conformity

TPL Systèmes hereby declares that **IPS_Beacon** complies with Directive 2014/53/EU. The full text of the Declaration of Conformity is available at www.tplsystemes.com, through TPL Systèmes Support or at your reseller, or by sending an e-mail to support@tplsystemes.com

FCC Warning

This device complies with Part 15 of the FCC Rules. Operation is subject to the following two conditions:

- (1) This device may not cause harmful interference, and
- (2) This device must accept any interference received, including interference that may cause undesired operation.

Note1: This equipment has been tested and found to comply with the limits for a Class B digital device, pursuant to part 15 of the FCC Rules. These limits are designed to provide reasonable protection against harmful interference in a residential installation. This equipment generates, uses and can radiate radio frequency energy and, if not installed and used in accordance with the instructions, may cause harmful interference to radio communications. However, there is no guarantee that interference will not occur in a particular installation. If this equipment does cause harmful interference to radio or television reception, which can be determined by turning the equipment off and on, the user is encouraged to try to correct the interference by one or more of the following measures:

- Reorient or relocate the receiving antenna.
- Increase the separation between the equipment and receiver.
- Connect the equipment into an outlet on a circuit different from that to which the receiver is connected.
- Consult the dealer or an experienced radio/TV technician for help.

Note 2: Any changes or modifications to this unit not expressly approved by the party responsible for compliance could void the user's authority to operate the equipment

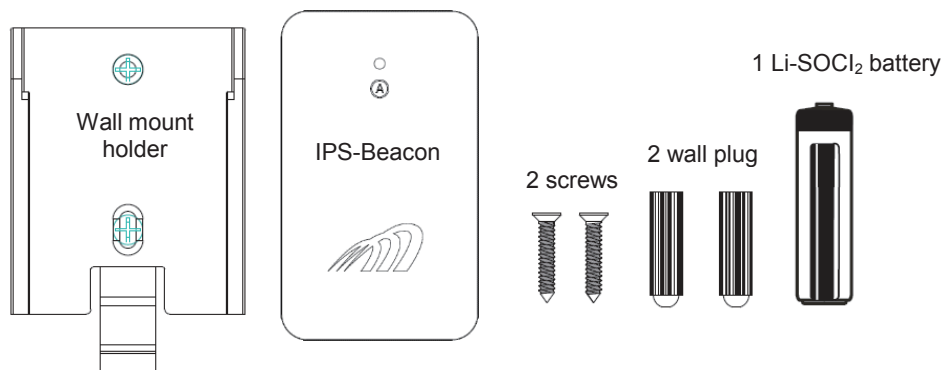
Copyright

TPL Systèmes reserves the right to modify this manual and its contents without any previous notice. Although no effort has been spared to make this manual as accurate as possible, it is not a contractual document.

IPS Beacon –Installation Guide

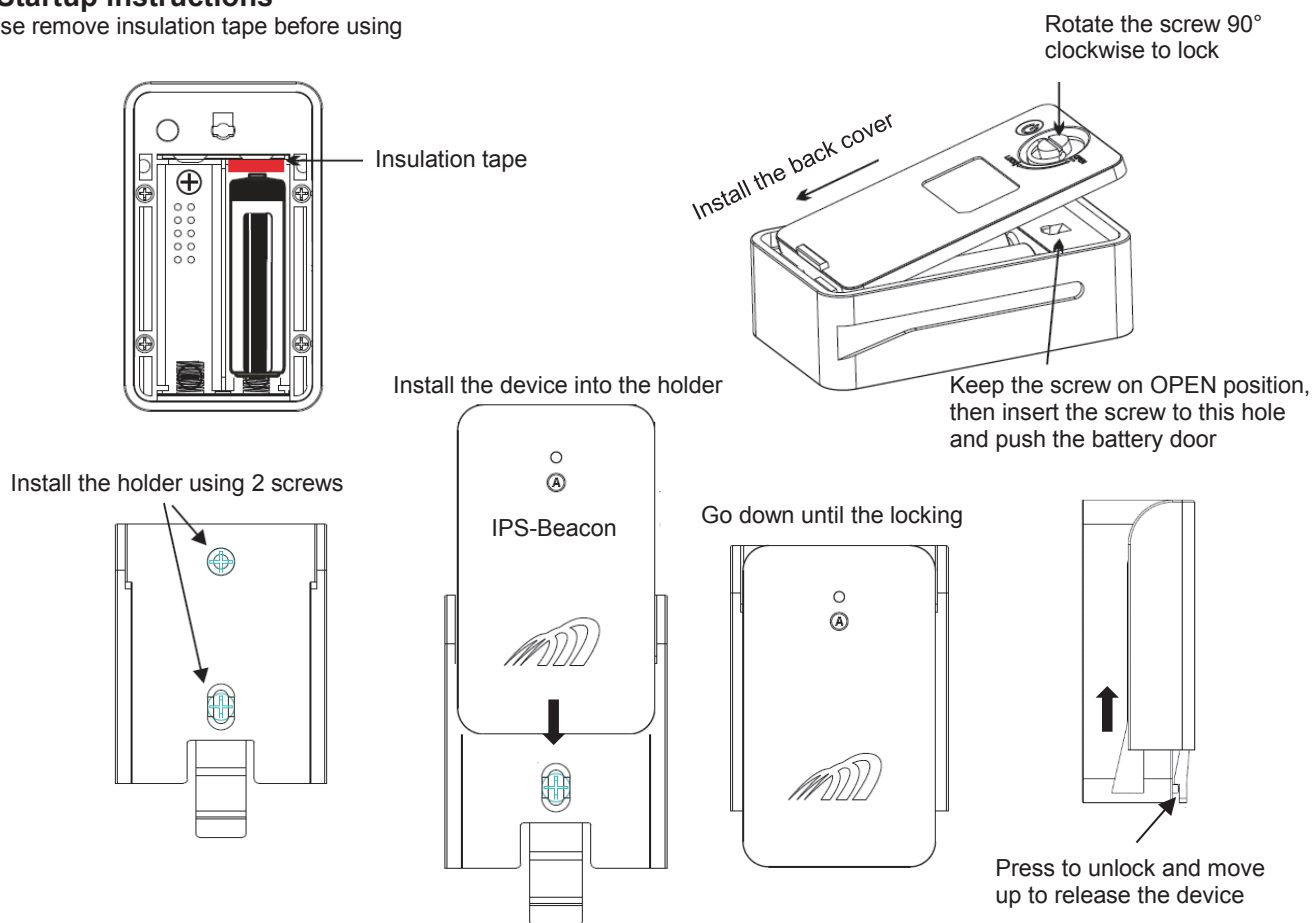
1 - Unpack and verify contents :

Please make sure that the following contents are included in the package



2 - Startup instructions

Please remove insulation tape before using



3 - How to use :

Download the **IPS Beacon Configuration** App from **Google Play** or from your personal account on www.tplsistem.com. The blue Led is blinking slowly. Press on the rear button for the first time connection. The Led becomes red and IPS-Beacon is connectable during 30s. You can now press the button CONNECT in the App to establish the connection. The 2 leds (red and blue) lighted-up, the screen for parameters setting is displayed and you can change user parameters.

