

# SEABIRD

SEABIRD SPORTS 4K ACTION QUICK START GUIDE

# CONTENTS

---

I.Preface.....	1
II.Safety Guide.....	1
III.Product Diagram.....	2
IV.Packing List.....	3
V.Basic Instructions.....	4
1.Camera on/off.....	4
2.Insert micro SD card.....	4
3.Three ways to access video and image files in SD card.....	5
4.Camera battery charging precautions.....	5
5.Ambient temperature' s influence on the battery.....	6
6.Descriptions about video lag and frame loss.....	6
7.Install and remove the battery.....	7
8.Turn on/off WiFi.....	8
9.Install APP.....	8
10.SEABIRD 4k action camera connected to APP .....	9
11.Filming mode.....	9
12.Photographing mode.....	9
13.Reset.....	9
14.Software upgrading.....	9
15.Basic parameters of SEABIRD 4k action camera .....	10

## I. Preface

SEABIRD 4k action cameras are designed in accordance with the development trend of market demand, with functions like timed photographing, continuous photographing, time-lapse photographing, time-lapse filming, loop filming and slow motion filming, long exposure, six-axis gyroscope anti-shake and custom LOGO. SEABIRD 4k action cameras can be used anywhere and anytime for outdoor sports and travel to meet your shooting needs.

## II. Safety Guide

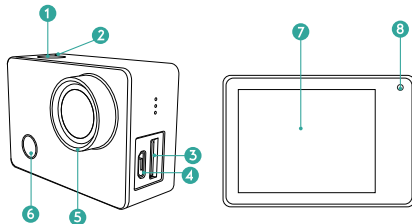
1. This product is highly precise and thus should not be dropped or bumped.
2. Please do not place this product near objects with high magnetic fields including magnetic fields or electromechanical devices. And do avoid placing this product close to objects that emit strong radio waves. These are aimed to avoid product failures or images/audio damages that may be caused by magnetic fields and radio waves.
3. Please do not expose this product to high temperatures or direct sunlight.
4. Please select a micro SD card of a formal brand U3 specification or above. A card of an informal brand is not guaranteed to work properly.
5. Please do not place the micro SD card near objects with magnetic fields in order to avoid loss of the data stored in the card.
6. If the product is overheated, smoked or smells during charging, please immediately pull out the charging device and stop charging to avoid a fire.

7. When charging, please keep this product out of the reach of children to avoid accidental suffocation or electric shock caused by the power cord.
8. Please put the product in a cool, dry and dusty-proof place.



Please select official collection points to recycle this product or its battery. Do not leave it in the trash can.

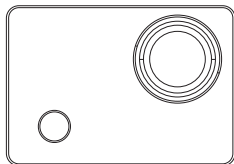
## III. Product Diagram



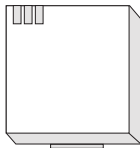
1. Start/stop photographing/shooting or return to the preview surface
2. Camera working state indicator
3. micro SD card slot
4. USB port

5. Lens
6. Power / mode switch / return button
7. Touch/display screen
8. Camera power indicator

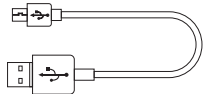
## IV.Packing List



Camera×1



Battery×1



USB cable×1



Instruction book×1

## V.Basic Instructions

### 1.Camera on/off

Press and hold the power button for 3 seconds to turn it on/off.

### 2.Insert micro SD card

The maximum support space of SEABIRD 4k action cameras external storage(Micro SD card) is 128G. SEABIRD 4k action cameras have requirements on the writing speed of the memory card used for shooting 4K image quality, only supporting the TF card U3 memory card. In order to ensure that you can shoot quality 4K video, please use the SD card recommended below.



SanDisk Extreme  
U3



SanDisk Extreme  
PRO U3



SanDisk Extreme  
PLUS U3



Lexar 1000  
×U3



SONY SR-64U  
×U3



Transcend Ultimate  
633 ×U3

### 3.Three ways to access video and image files in SD card

- (1)Access the SD card on the PC side via a card reader.
- (2)Directly access the SD card in the camera on the PC side by means of USB cable connection.
- (3)Download the multimedia files in the SD card inside the camera from the APP “SEABIRD” on the mobile phone or play them online through WiFi.

### 4.Camera battery charging precautions

- (1)If the user directly connects to the camera via the USB cable for charging, the charging process will be faster while the service time will be shortened. A green light indicates that the charging is finished and please unplug the USB cable in time.
- (2)It is recommended to turn off the camera when charging.
- (3)If the user charges the battery through the seabird special charger, the battery will be more full and can be used for a longer time although the charging takes a long time. A green light indicates that the battery is fully charged and please unplug the USB cable in time.
- (4)Due to battery variability, the battery may show that it does not reach the amount of 100% after the charging is finished. This is a normal phenomenon.



Do not charge the camera after unplugging the battery.

### 5.Ambient temperature' s influence on the battery

Due to the characteristics of the lithium battery, it consumes more power and its charging and discharging capacity decreases when used in the ambient temperature of above 40 degrees and below 0 degrees.



Do not use the camera in the ambient temperature of above 60 degrees and below minus 20 degrees.

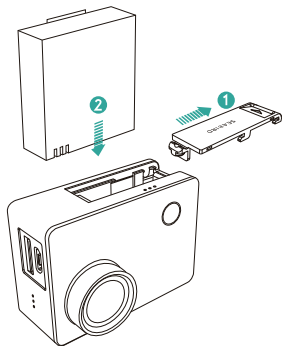
### 6.Descriptions about video stuck and frame loss

- (1)If the user finds that it sticks while the video is being played, please first exclude problems concerning the computer performance and the player.
- (2)Please ensure that the SD card used is a micro SD card of a formal brand U3 specification or above. Avoid using cards under U3 specification and fake ones.
- (3)If you shoot in a high temperature environment of 35 degrees or more for a long time, the reading and writing performance of the SD card will enormously declined, causing problems such as frame loss.




Please avoid prolonged use in high temperature environments.

## 7.Install and remove the battery



- (1)Toggle the battery cover down to open it.
- (2)Install the battery into the camera in accordance with the positive and negative signs and the directions of the arrows on the battery until it is in place.
- (3)Battery charging indicator: Please refer to the product diagram.
- (4)Remove the battery: open the battery cover to remove the battery.

## 8.Turn on/off WiFi

- (1)Turn on the camera and click on the “Setting” icon  at the lower left corner of the camera screen. Then click on WiFi and choose to turn WiFi on or off.
- (2)WiFi consumes a lot of power, so please turn it off when not in use.

## 9.Install APP

### Android phone users

can search for the APP “SEABIRD” in major Android application markets (Huawei Application Market, OPPO Application Market, 360 Assistant, Google Play, Xiaomi App Store, etc.) and then download and install it;

### iPhone users

can search for the APP “SEABIRD” in the APP store and then download and install it; If you search for downloads on the IPAD, you need to select the choice of “iPhone only”.


### Software download QR code:




## 10. SEABIRD camera connected to APP

First open the SEABIRD 4k action camera, click on the icon  turn on WIFI. Then open the app, click on the symbol of WiFi at the upper left corner of the APP interface to find the WiFi device with the format of "SEABIRD-XXXXXX". Enter the initial password 12345678 and you can connect to the device.


## 11. Filming mode

Open the camera UI menu bar and the icon  appears at the upper right corner of the screen. Click on the icon to enter the filming mode.

## 12. Photographing mode

Open the camera UI menu bar and the icon  appears at the upper left corner of the screen. Click on the icon to enter the photographing mode.

## 13. Reset

Open the camera UI menu bar and click on the icon  at the lower left corner of the screen. And select "Reset" and confirm it, then you can restore the factory settings and reset the camera.

## 14. Software upgrading

In the settings menu of the mobile app, select "Firmware Upgrade" and follow the prompts to operate.

## 15. Basic parameters of SEABIRD 4k action cameras

Product Introduction	
Product Name	SEABIRD 4K ACTION CAMERA
Category	4k 30 frames sports camera
Master	HI3559
Sensor	SONY
Pixel	12 million
Video Resolution	4k/30fps, 2.7k/30fps,
	1080p/60fps, 1080p/30fps,
	720p/120fps, 720p/90fps,
	720p/60fps, 720/30fps,
	480p/120fps, 480p/90fps,
	480p/60fps, 480p/30fps
Video Slow Motion Resolution	720p/120fps
Power Consumption	2.3 W
Video Coding	H264, H265
Lens	F2.6 Aperture / 7G
	/ diameter 17.4mm

Product Introduction	
Field of View	MAX145°
Electronic anti-shake	Supporting 6-axis gyroscope anti-shake
Function Parameters	
Wireless capability	WiFi / Blue tooth
Storage Parameters	
Memory card type	Micro SD card
Maximum support capacity	128GB
Battery Performance	
Battery type	Lithium battery(1050mAh)
Battery life	90 minutes for 4K/30 frames video recording
Design	
Feature	Light
Body Color	Blue, orange, green
Size	59.2 × 41 × 29.9 mm
Weight	54.5g(body only)



SEABIRD official  
WeChat Account

Official website: [www.seabirdcam.com](http://www.seabirdcam.com)

Telephone: 400-600-6530



## Warning:

This device complies with Part 15 of the FCC Rules. Operation is subject to the following two conditions: (1) this device may not cause harmful interference, and (2) this device must accept any interference received, including interference that may cause undesired operation.

changes or modifications not expressly approved by the party responsible for compliance could void the user's authority to operate the equipment.

**NOTE:** This equipment has been tested and found to comply with the limits for a Class B digital device, pursuant to Part 15 of the FCC Rules. These limits are designed to provide reasonable protection against harmful interference in a residential installation. This equipment generates, uses and can radiate radio frequency energy and, if not installed and used in accordance with the instructions, may cause harmful interference to radio communications. However, there is no guarantee that interference will not occur in a particular installation. If this equipment does cause harmful interference to radio or television reception, which can be determined by turning the equipment off and on, the user is encouraged to try to correct the interference by one or more of the following measures:

- Reorient or relocate the receiving antenna.
- Increase the separation between the equipment and receiver.
- Connect the equipment into an outlet on a circuit different from that to which the receiver is connected.
- Consult the dealer or an experienced radio/TV technician for help.

**NOTE:** This device and its antenna(s) must not be co-located or operation in conjunction with any other antenna or transmitter.

## RF Exposure Statement

To maintain compliance with FCC's RF Exposure guidelines, This equipment should be installed and operated with minimum distance of **5mm** between the radiator and your body. This device and its antenna(s) must not be co-located or operation in conjunction with any other antenna or transmitter.