


正面

User Manual

## Electronic Training Collar System



DT-310  
Pls read this entire manual before using this product.

### Important Safety Information

**WARNING:**  
**NOT FOR AGGRESSIVE DOGS.** Do not use this product if your dog is aggressive, or if your dog is prone to aggressive behavior, aggressive dogs can cause severe injury and even death to their owner and others. If you are unsure whether this product is appropriate for your dog, please consult your veterinarian or certified trainer.

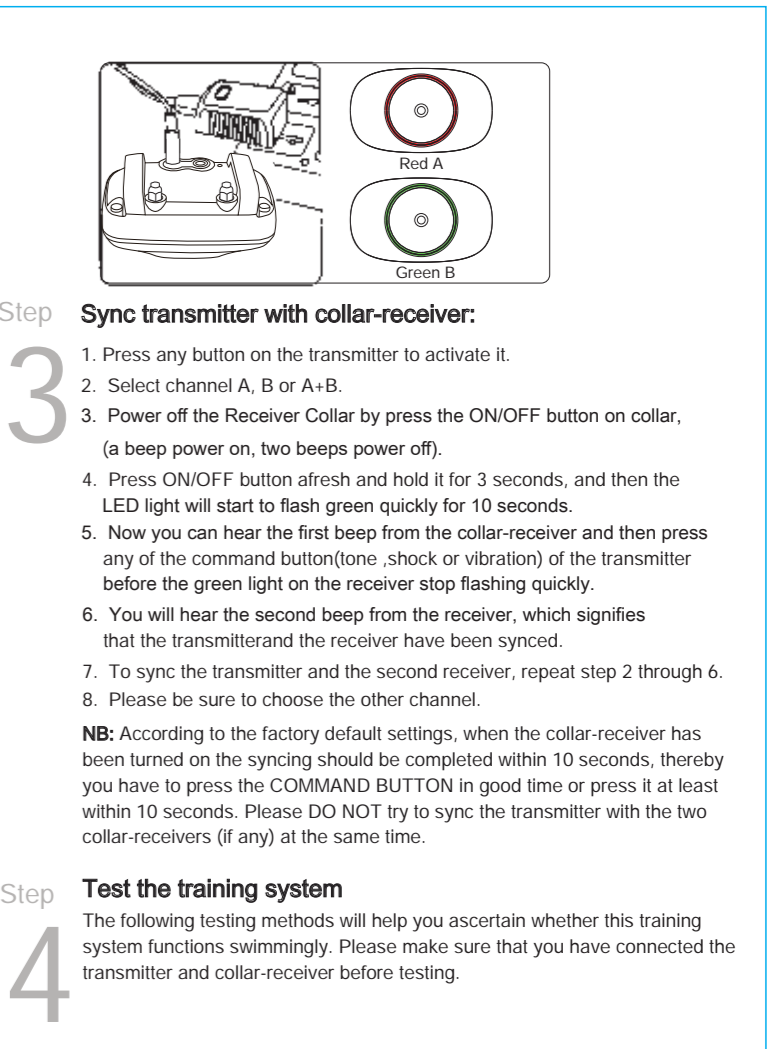
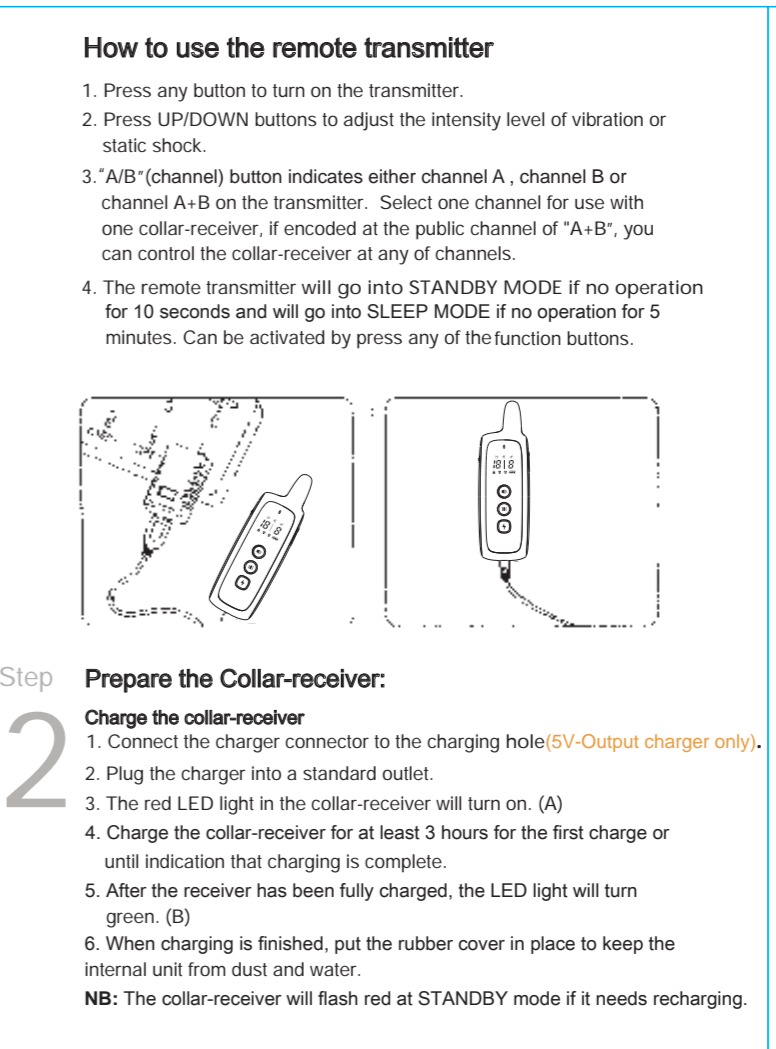
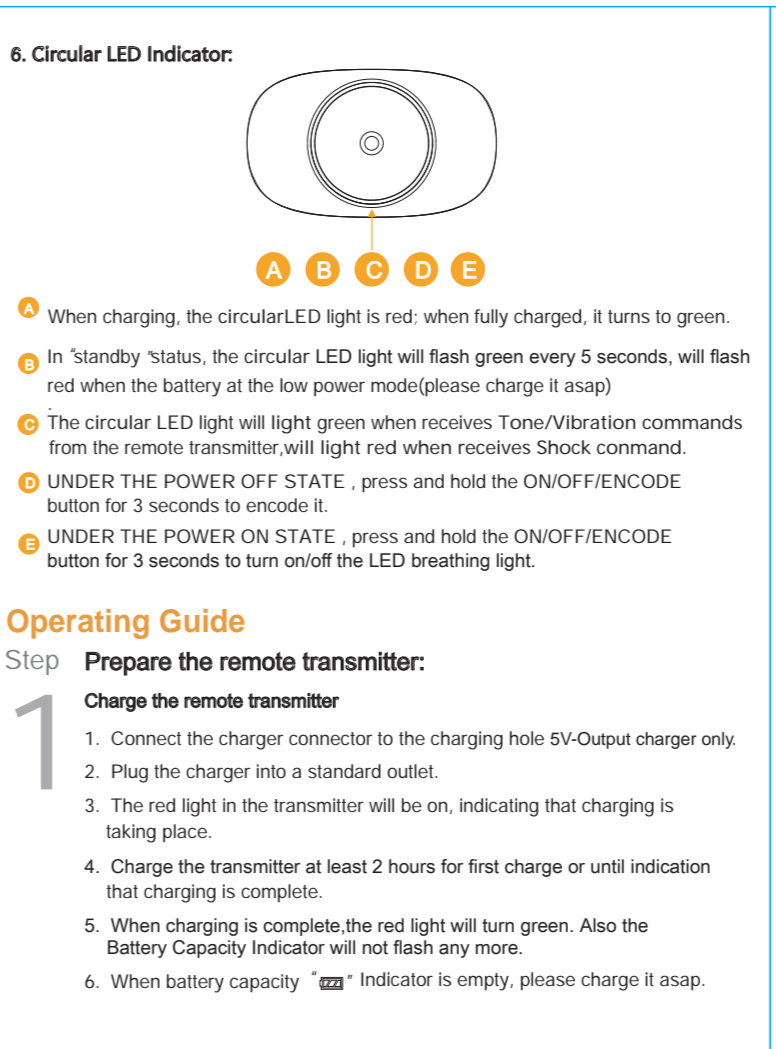
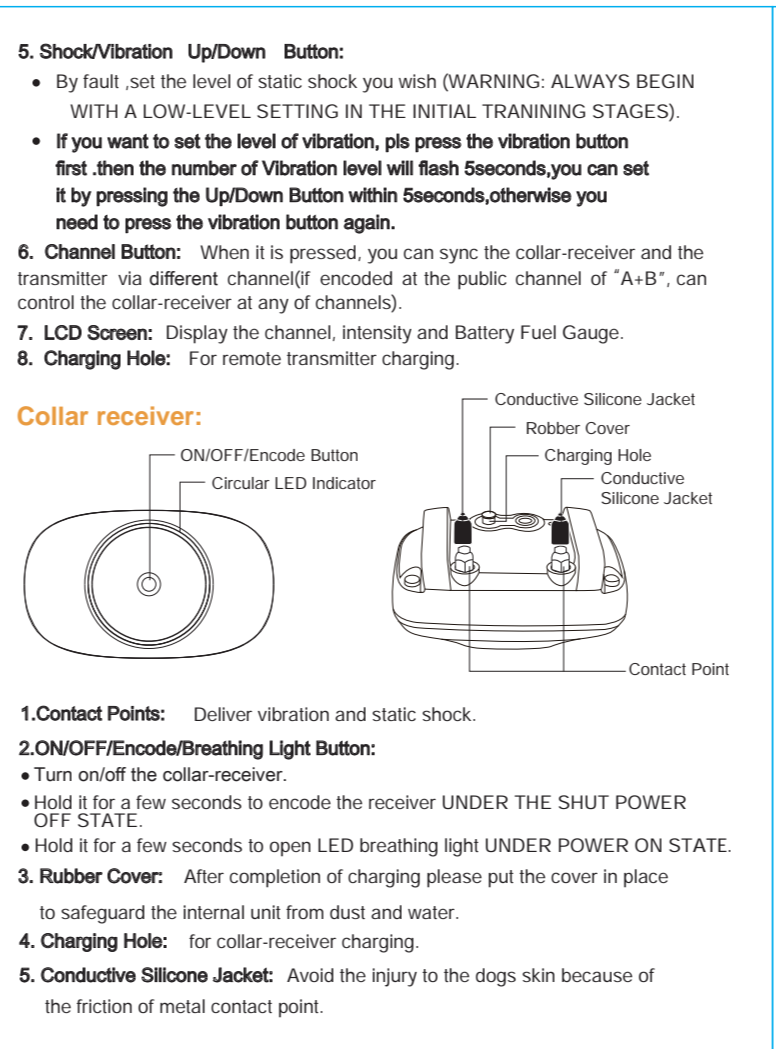
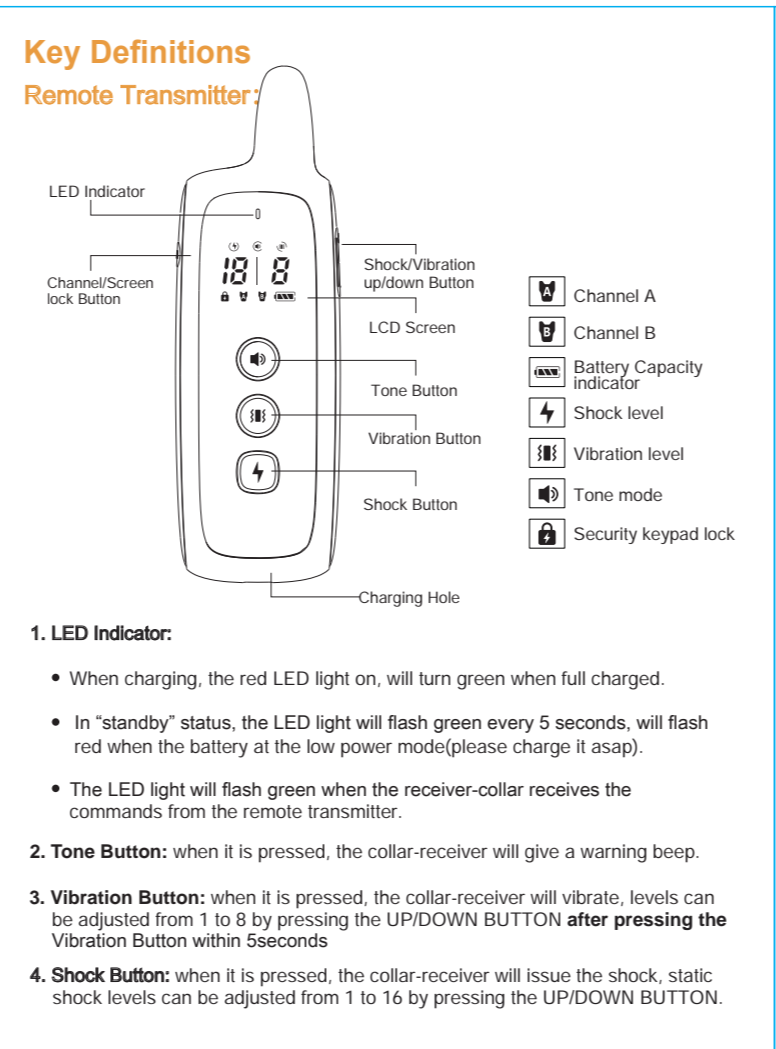
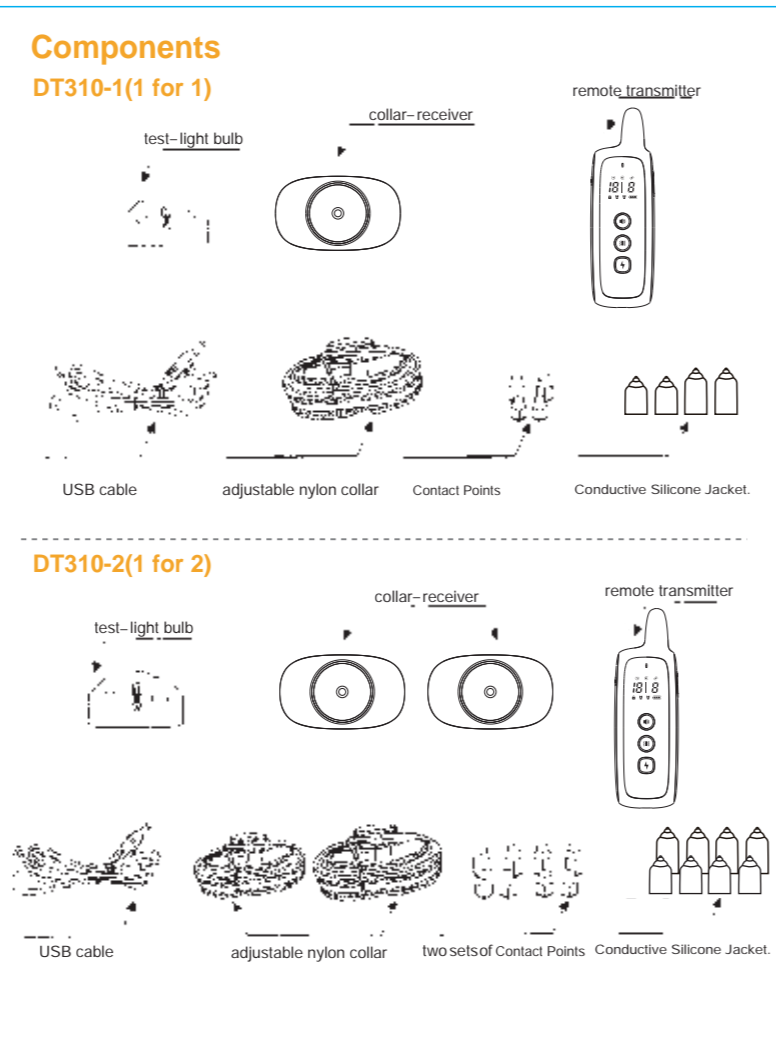
**CAUTION:**  
**Risk of skin damage:** Please read and follow the instructions carefully in this guide, proper fit of the collars is important because a loose collar may cause inconsistent performance. A collar worn for too long or made too tight on the pet's neck may cause skin damage, ranging from redness to pressure ulcers (commonly known as bedsores). These collars can cause pressure necrosis if used incorrectly and is often misidentified as burns.

- Avoid leaving the collar on the dog for more than 12 hours per day.
- When possible reposition the collar on the pet's neck every 1 to 2 hours.
- Check the fit to prevent excessive pressure, and it is okay to trim any excess strap length.
- Never connect a lead to the electronic collar because it may cause excessive pressure on the contacts.
- Wash the dog's neck area and contacts of the collar weekly with a damp cloth.
- Examine the contact area daily for signs of a rash or a sore.
- If a rash or sore is found, discontinue use of the collar until the skin has healed.
- If the condition persists beyond 48 hours, see your veterinarian.

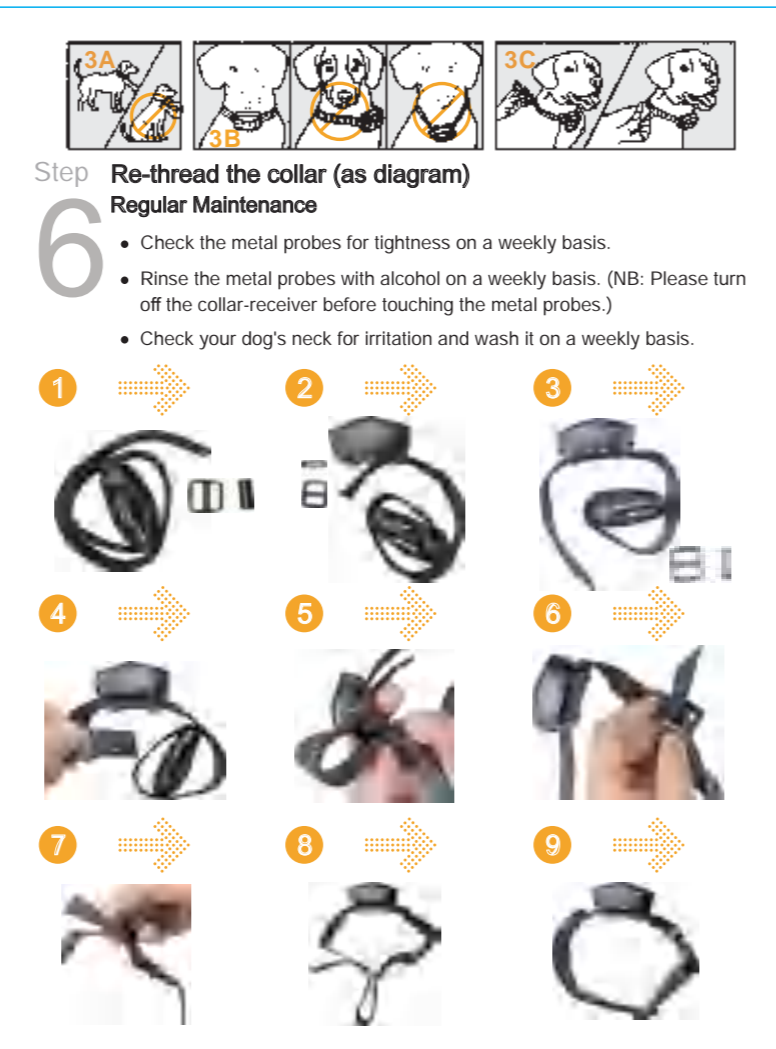
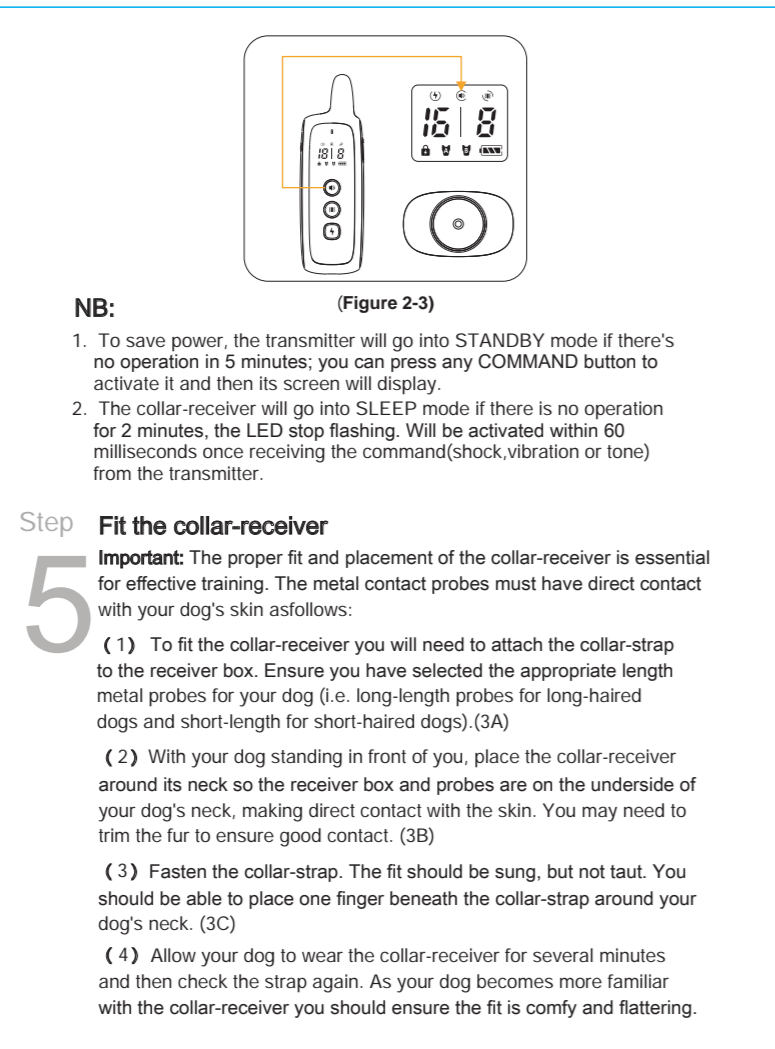
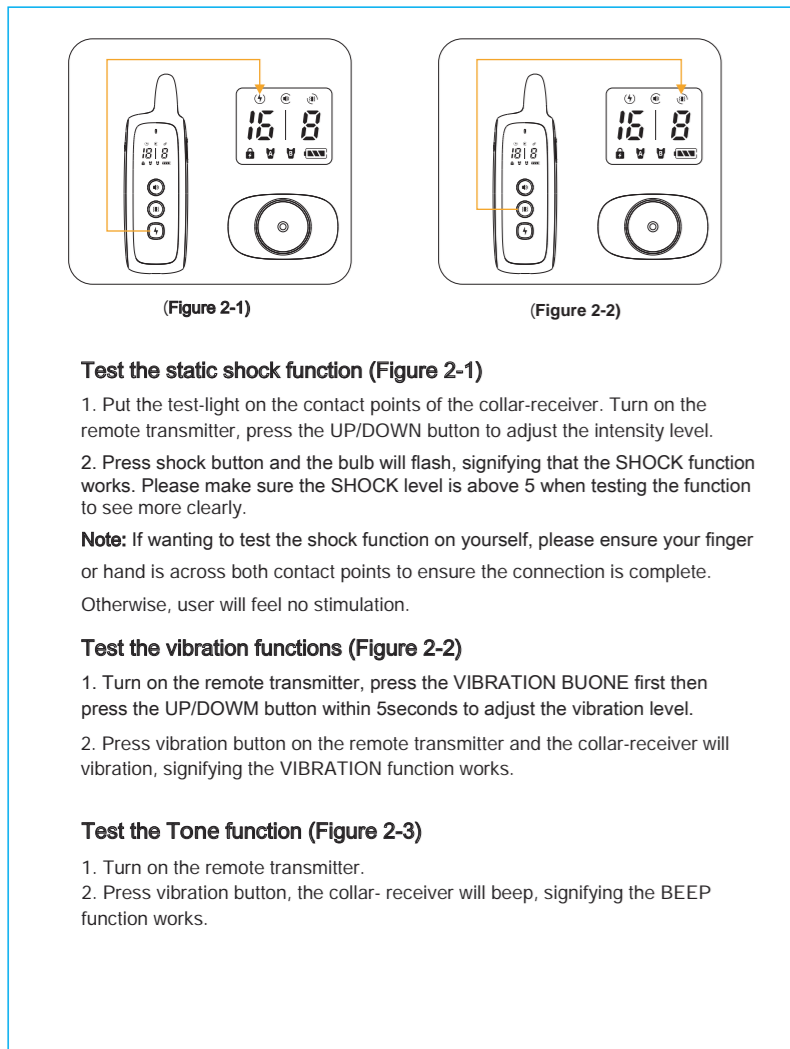
These steps will help your pet safe and comfortable. Millions of pets are comfortable while wearing stainless steel contacts. Some pets are sensitive to contact pressure. You may find after some time that your pet is very tolerant of the collar. If so you may relax some of these precautions, it is important to continue daily checks of the contact area. If redness or sores are detected, discontinue use until the skin has fully healed.....

Thank you for choosing our product! You and your pet deserve a companionship that includes memorable moments and a shared understanding together. Our mission is to ensure your pet's safety by providing you the tools and techniques to successfully train your pet. Should you have any queries, please contact our customer service.

**NOTE: Please charge before using the product.**



背面



### Troubleshooting

**My pet is not responding after the pet training system has been installed successfully.**

- You need to charge the remote transmitter and the collar-receiver for 2 H separately before initial use.
- Check to see if the remote transmitter and the collar-receiver have been turned on.
- Check the intensity levels of vibration and static shock.
- Make sure the collar-receiver has sufficient power to operate.
- Restart the collar-receiver by pressing the ON/OFF button.
- Please test the 3 functions (BEEP, VIBRATION AND, STATIC SHOCK) before initial use. See the "test the training system" part of this guide for testing methods.
- Check whether the collar-receiver has entered into the DEEP SLEEP mode.
- Check if the collar fits snugly with your pet's neck.
- Check the thickness of your pet's fur and use appropriate length metal probes. If necessary, please trim your pet's neck hair so that the metal probes come in direct contact with your pet's skin.
- If all of the above have been addressed and your pet still gives no response. Please try to re-connect the remote transmitter and the collar-receiver.

**The remote transmitter does not work.**

- Check if the remote transmitter is in low battery status. If the Battery Capacity "███"Indicator is empty, battery exhaustion is imminent.
- You have to press and hold the power button on the transmitter to turn it on.
- Check if the transmitter has entered into the STANDBY or DEEP SLEEP status.

**My collar-receiver works great for some time, yet it does not work after charging.**

- First, check if the receiver has been charged correctly. Check the "prepare the collar-receiver" part of the guide for the correct charging method.
- Check if the receiver has been turned on.

**I want to test the collar-receiver on myself, but it does not work.**

- When testing the receiver on your hands, please touch the 2 electrodes at the same time as touching one single electrode will not work.

### General Training Tips

**The following are tips on how to get the best out of your Remote Pet Training Collar:**

- Make the training sessions short and positive (between 10-15 minutes long for each time), which will enable your dog to keep its attention focused on you.
- Train one dog at a time.
- During initial training sessions, keep your dog in a familiar outdoor environment e.g. an enclosed area of the garden and away from other dogs/animals and people. Training in new locations may cause your dog to become distracted causing you to reinforce your commands with the remote collar-receiver more often collar-receiver more than accordingly.
- Use a long leash fastened to a non-metallic collar to help his/her learning. Ensure the additional collar and leash does not interfere with the skin contact of the metal probes on the collar-receiver. Do not use the remote training collar without a long leash until your dog is fully trained.
- You will have more success by teaching the dog a command first before trying to reinforce to command with the remote trainer.
- For basic obedience training, VIBRATION and AUDIO modes are more useful.
- Issue an obedience command at a time, which will focus your dog's attention and reduce confusion. Do not use the remote collar to correct commands that have not already been covered.
- During training, look for all the positive changes in your dog's behavior and remember to reinforce them promptly with ample praise and reward.
- Avoid over-correcting your dog. Use as few remote corrections as possible during the training process.
- When your dog has become apparently perplexed, shift the focus of the training session by drawing his/her attention to a command they are familiar with, e.g. sit. Give your dog praise and encouragement galore on successful completion of the command. Repeat this several times before returning to training with remote corrections

(14) If you know a particular misbehavior your dog does, then reinvent this situation during a training session. You will have far more success if you deal without misbehavior at a time in a controlled situation.

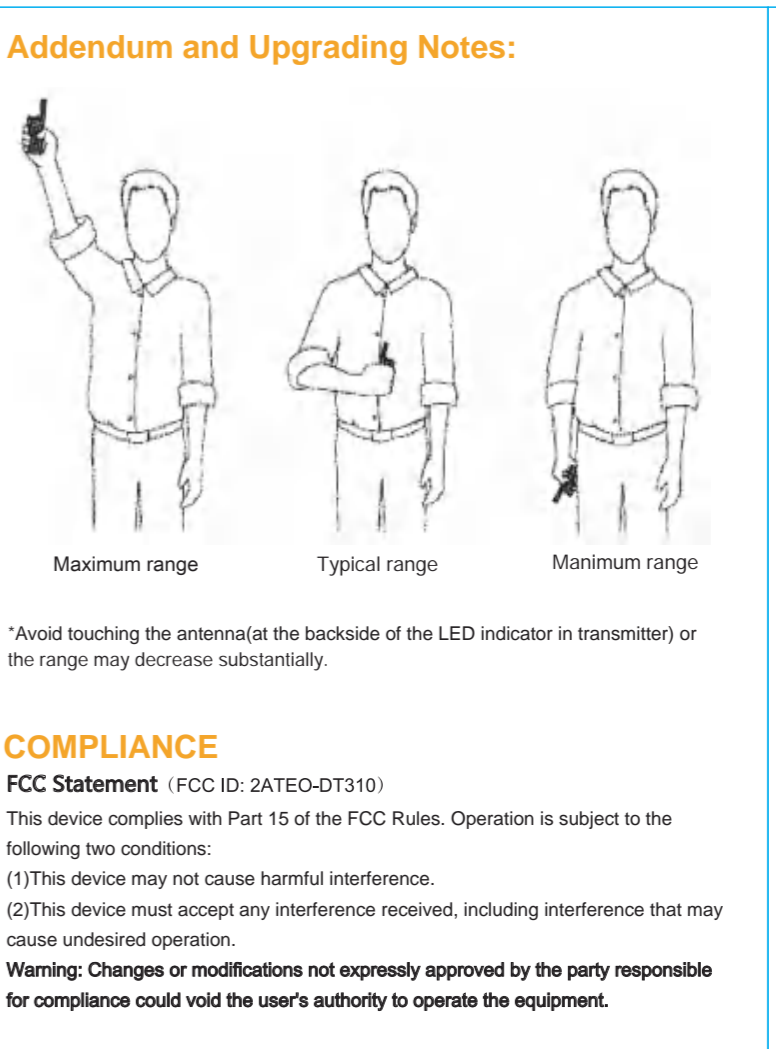
(12) Be consistent; give your dog a tone, vibration or static-stimulation correction for each misbehavior. When reinforcing a command with a correction, it is critical that you do so without emotion then immediately praise and reward your dog for marking the right decision

(13) When your dog seems to react in a timid and frightened fashion to either the tone, vibration or static-stimulation, particularly in early training sessions, do not be flabbergasted. Shift the focus of the training session by drawing his/her attention to a command they are familiar with. E.G. sit and give your dog abundant praise and encouragement on successful completion of the command.

(14) Do not use Remote Pet Training Collar to correct or eliminate form of aggression or biting behavior. When your dog is showing signs of aggressive behavior then contact a professional dog trainer in your vicinity

(15) Please be reminded that you should keep training sessions short and end every session on a high note. Stop training and play with your dog as soon as he/she has accomplished a new level of proficiency.

SIZE	NECK GIRTH (IN)	NECK GIRTH (IN)	BACK LENGTH (IN)	WEIGHT (LBS)	BREED
x-SMALL	7.8-8.6	9.8-11.8	7.4	1-10	Chihuahua,yorkshire,terrier
SMALL	7.8-9.4	11.4-14.1	9.0	11-25	Poodle,Pomeranian
MEDIUM	9.0-11.0	13.7-16.5	11.0	26-40	Shih Tzu,Maltese Dog
LARGE	10.6-12.2	16.1-18.5	12.2	41-70	Miniature Schnauzer,Pekingese
LARGE	11.8-13.3	18.1-20.8	13.7	71-90	English Cocker Spaniel
LARGE	12.9-14.5	20.4-23.2	15.7	91-110	Beagle
X-LARGE	16.9-18.9	29.9-33.0	23.6	N/A	Husky
X-LARGE	18.5-20.4	34.6-38.1	23.6	N/A	Labrador Retriever
X-LARGE	20.4-24.4	36.2-39.3	27.5	N/A	Golden Retriever Old English Sheepdog



**Note:** This equipment has been tested and found to comply with the limits for a Class B digital device, pursuant to Part 15 of the FCC Rules. These limits are designed to provide reasonable protection against harmful interference in a residential installation. This equipment generates uses and can radiate radio frequency energy and, if not installed and used in accordance with the instructions, may cause harmful interference to radio communications. However, there is no guarantee that interference will not occur in a particular installation. If this equipment does cause harmful interference to radio or television reception, which can be determined by turning the equipment off and on, the user is encouraged to try to correct the interference by one or more of the following measures:

- Reorient or relocate the receiving antenna.
- increase the separation between the equipment and receiver.
- Connect the equipment into an outlet on a circuit different from that to which the receiver is connected.
- Consult the dealer or an experienced radio/TV technician for help.

**LIMITED 90-days WARRANTY**

We warrant this product to be free of defects in parts, materials and workmanship for a period of 90days, from date of purchase. Should any repairs or servicing under this warranty be required, contact Customer Service by phone or email for instructions on how to pack and ship the product

**COMPLIANCE**

**FCC Statement** (FCC ID: 2ATEO-DT310)  
This device complies with Part 15 of the FCC Rules. Operation is subject to the following two conditions:  
(1)This device may not cause harmful interference.  
(2)This device must accept any interference received, including interference that may cause undesired operation.

**Warning: Changes or modifications not expressly approved by the party responsible for compliance could void the user's authority to operate the equipment.**

**FCC CE RoHS Made in China**

FCC Warning:

This equipment has been tested and found to comply with the limits for a Class B digital device, pursuant to part 15 of the FCC Rules. These limits are designed to provide reasonable protection against harmful interference in a residential installation. This equipment generates, uses and can radiate radio frequency energy and, if not installed and used in accordance with the instructions, may cause harmful interference to radio communications. However, there is no guarantee that interference will not occur in a particular installation. If this equipment does cause harmful interference to radio or television reception, which can be determined by turning the equipment off and on, the user is encouraged to try to correct the interference by one or more of the following measures:

- Reorient or relocate the receiving antenna.
- Increase the separation between the equipment and receiver.
- Connect the equipment into an outlet on a circuit different from that to which the receiver is connected.
- Consult the dealer or an experienced radio/TV technician for help.

Caution: Any changes or modifications to this device not explicitly approved by manufacturer could void your authority to operate this equipment.

This device complies with part 15 of the FCC Rules. Operation is subject to the following two conditions:

(1) This device may not cause harmful interference, and (2) this device must accept any interference received, including interference that may cause undesired operation.

This equipment complies with FCC radiation exposure limits set forth for an uncontrolled environment. This equipment should be installed and operated with minimum distance 0cm between the radiator and your body.