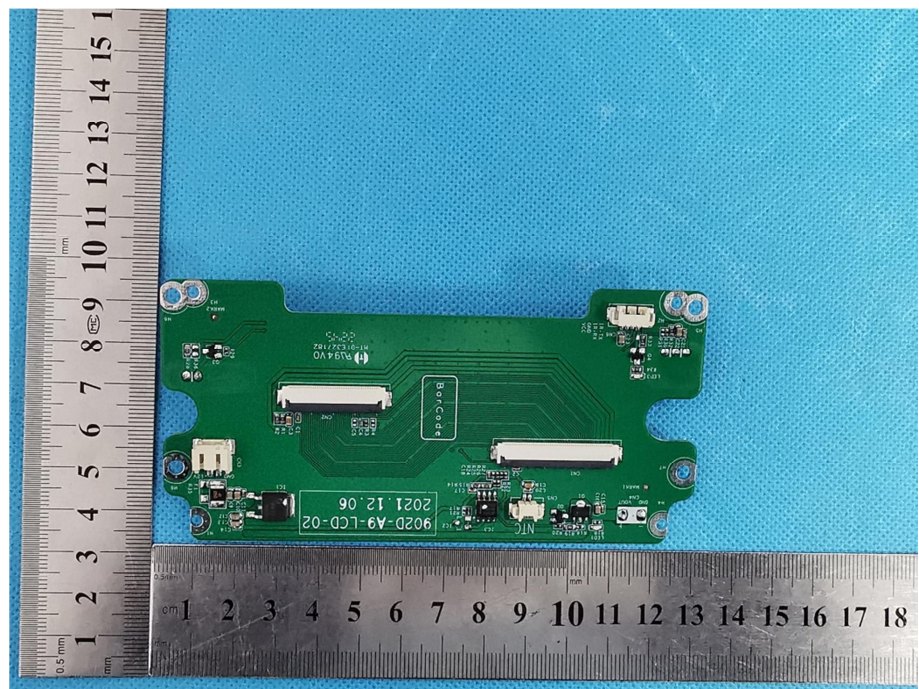
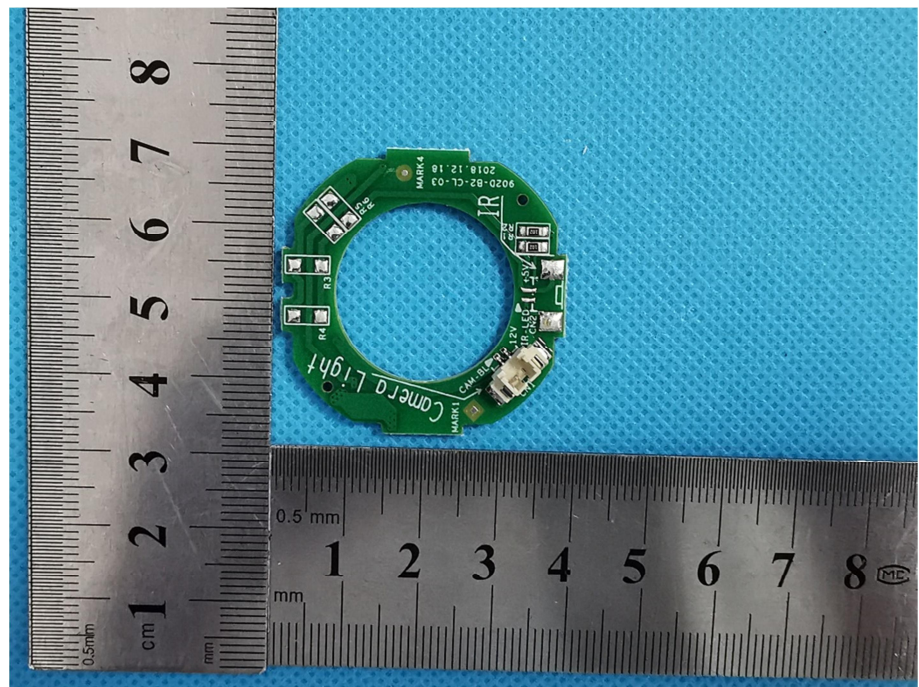
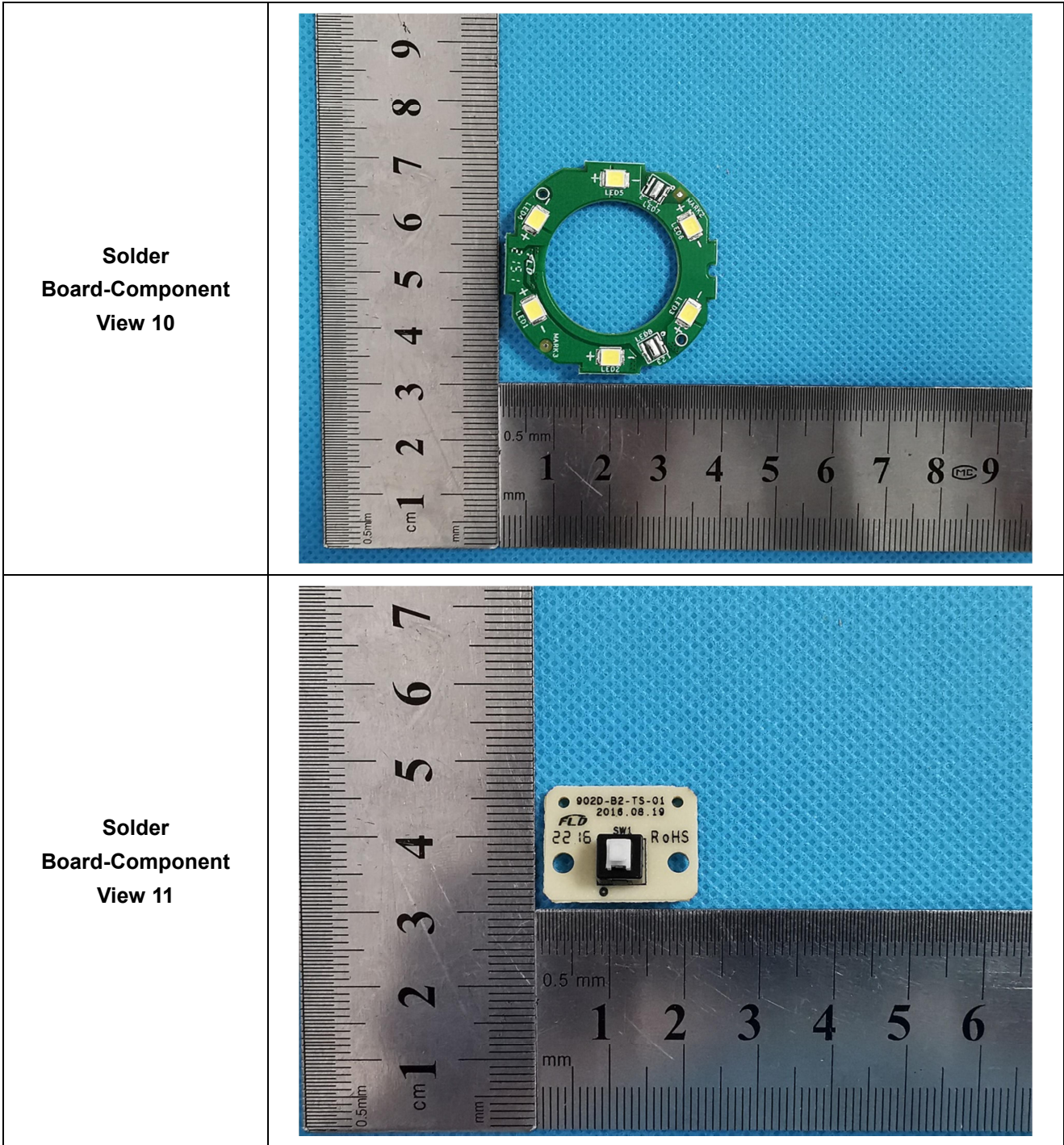


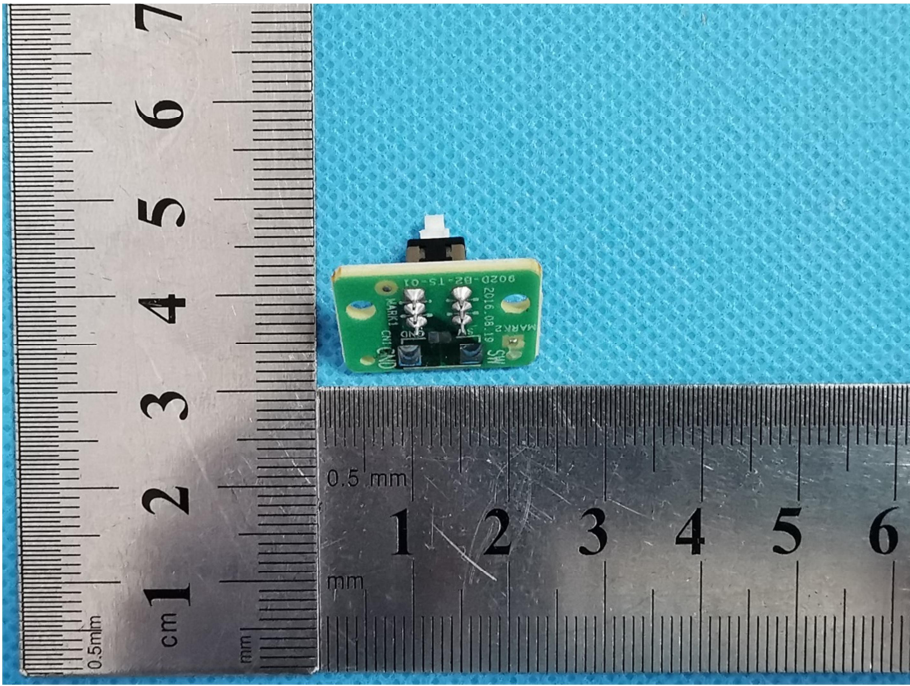
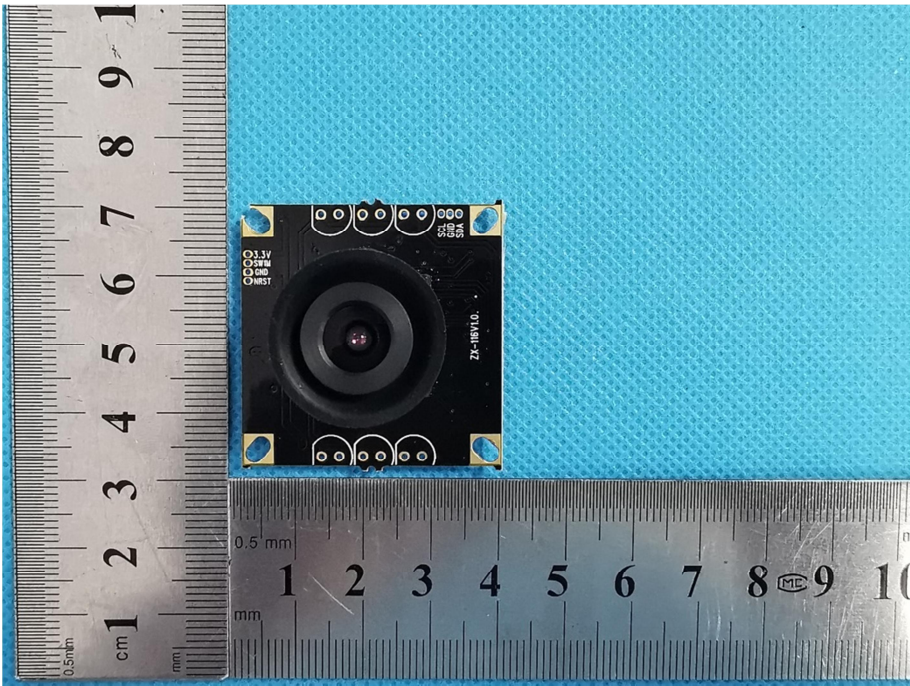
**Solder
Board-Component
View 8**



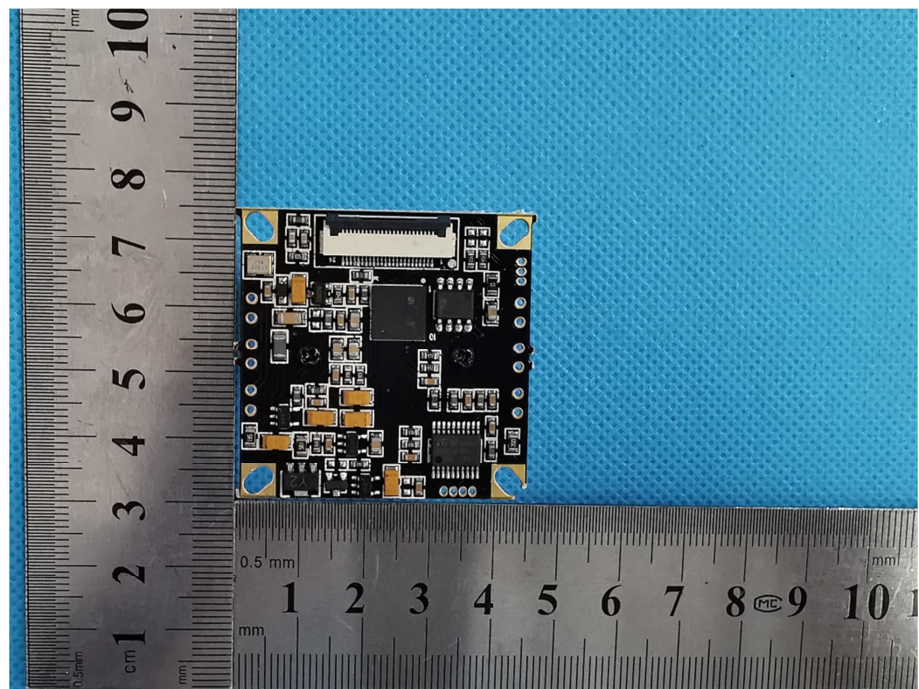
**Solder
Board-Component
View 9**





<p>Solder Board-Component View 12</p>	 <p>A photograph of a small green PCB component with a white connector. The component is placed on a blue textured surface next to a metal ruler. The ruler shows centimeter and millimeter markings. The component has several small components on it, including what appears to be a microcontroller or sensor. Text on the component includes '9020-B2-15', '9020-0813', and 'MAR 2013'.</p>
<p>Solder Board-Component View 13</p>	 <p>A photograph of a black PCB component with a lens. The component is placed on a blue textured surface next to a metal ruler. The ruler shows centimeter and millimeter markings. The component has a lens in the center and several small components around it. Text on the component includes '0.3V', '0.5V', '0.1V', 'NRST', and 'ZK-18V1.0'.</p>

**Solder
Board-Component
View 14**



**Solder
Board-Component
View 15**

