

29.5cm

21cm

**SHARPER
IMAGE®**

BLUETOOTH
BODY FAT SCALE
INCLUDES FREE PROGRESS APP



1 YEAR LIMITED WARRANTY

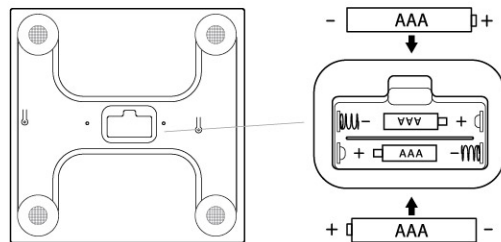
Thank you for purchasing the Sharper Image® Bluetooth Body Fat Scale. The scale sensors measure: BMI, body fat, muscle mass, water mass, & bone mass. A free progress app is included and can track all of these statistics for you.

- Read all instructions carefully before use.
- Carefully remove all contents from the packaging and inspect the product to make sure all components have been received.

Register your product at: www.ginsey.com/registration

BATTERY INSTALLATION

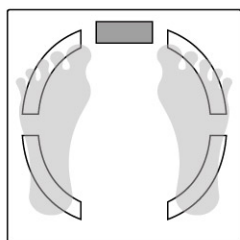
- 1) The scale requires 2 x AAA batteries.
- 2) To replace, open the battery compartment cover and remove the old batteries.
- 3) Install 2x AAA batteries with polarity (+/-) as shown inside the battery compartment.
- 4) Replace the battery compartment cover.



HOW TO USE SCALE

- 1) Place the scale on a smooth, flat level surface.
- 2) Carefully step on scale. Your weight will flash on the LCD screen while you maintain balance. When the LCD screen stops flashing, your final weight will be displayed.
- 3) You can toggle between lbs or kgs by pressing the button on the underside of the scale.
- 4) The scale will automatically turn off after 5 seconds.

You must step on the scale with your bare feet touching the silver colored sensors in order for the scale to read Fat, Muscle, Water, V-Fat, Bone Mass, and Metabolism.



PROGRESS APP - GETTING STARTED

- 1) Check Required Specifications for Phone or Tablet



Compatible with iOS7.0 and above with Bluetooth 4.0 and above

iPhone 4s, iPhone 5, iPhone 5c, iPhone 5s, iPhone 6, iPhone 6 Plus, iPod touch 5, iPad 3, iPad 4, iPad Air, iPad Air 2, iPad Mini, iPad Mini 2, iPad Mini 3



Compatible with Android 4.3 and above with Bluetooth 4.0 and above

Samsung: Galaxy s5, Galaxy s4, Galaxy s3, Galaxy Note 4, Galaxy Note 3, Galaxy Note 2, Galaxy Grand 2

INSTALL PROGRESS APP - OKOK

Use your device to scan one of the QR Codes below and download the App.



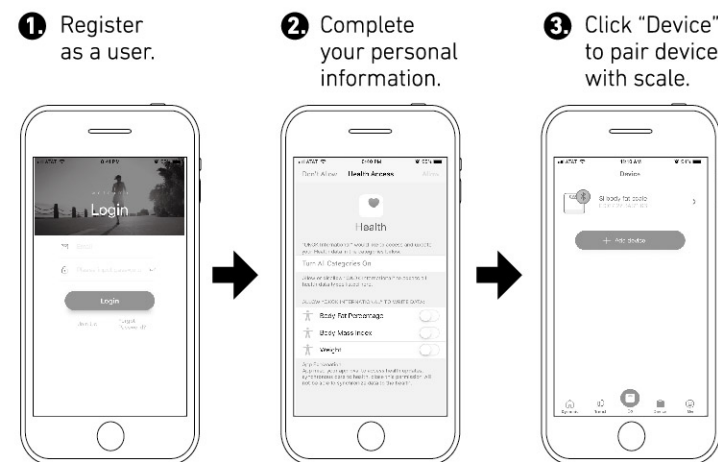
Apple.
App Store



Android.
Google play

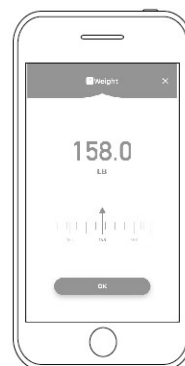
PAIRING DEVICE WITH SCALE

Switch on Bluetooth on your device



WEIGHING

- 1) Tap "Dynamic" in the App
- 2) Stand on the scale and synchronize your weight data with the App.



TEST RESULTS

Tap "Trend" in the App and view your test reports and track your progress.

At the top of the screen, scroll right to view Weight, BMI, Fat, Muscle, Water, V-Fat, Bone Mass, and Metabolism



CLEANING AND MAINTENANCE

- Periodically wipe with a soft, damp cloth. Dry with soft cloth.
- DO NOT use detergents, excess water, treated cloths, harsh cleaning agents to clean the plastic housing
- DO NOT use cleaners or solvents on glass surface

WARNINGS:

- 1) Do not use scale on a wet floor. To prevent slipping, make sure the glass surface is dry. Step carefully onto scale.
- 2) Stand in the center of the scale to prevent tipping.
- 3) The scale is made of tempered glass. Discontinue use if glass becomes chipped, cracked, or damaged.
- 4) Keep surrounding area clean and dry. Do not submerge scale under water.

CAUTION:

- Do not mix old and new batteries, or batteries of different types: Alkaline, standard (carbon-zinc) or rechargeable (nickel-cadmium).
- Insert batteries with correct polarity, as indicated inside the battery compartment.
- Remove batteries during long periods of non-use.
- Always remove exhausted batteries from this product.
- Dispose of batteries safely.

FCC INFORMATION

Model No: 01350

This device complies with Part 15 of the FCC Rules. Operation is subject to the following two conditions:

- (1) this device may not cause harmful interference, and
- (2) this device must accept any interference received, including interference that may cause undesired operation.

WARNING: Changes or modifications not expressly approved by the party responsible for compliance could void the user's authority to operate the equipment.

This equipment has been tested and found to comply with the limits for a Class B digital device, pursuant to Part 15 of the FCC Rules. These limits are designed to provide reasonable protection against harmful interference in a residential installation. This equipment generates, uses and can radiate radio frequency energy and, if not installed and used in accordance with the instructions, may cause harmful interference to radio communications. However, there is no guarantee that interference will not occur in a particular installation.

If this equipment does cause harmful interference to radio or television reception, which can be determined by turning the equipment off and on, the user is encouraged to try to correct the interference by one or more of the following measures:

- Reorient or relocate the receiving antenna.
- Increase the separation between the equipment and receiver.
- Connect the equipment into an outlet on a circuit different from that to which the receiver is connected.
- Consult the dealer or an experienced radio/TV technician for help.

PRODUCT SPECIFICATION

Display: All data displayed when powered on

Capacity: 3kg - 180kgs

Division: 1D = 100g/0.2 lb

Unit: KG/LB

Voltage: 3V

Battery: 2 x AAA batteries

Low battery indication: 2.4V \pm 0.2V, display "Lo" and power off

Current: \leq 25mA

Standby current: \leq 10 μ A

Overload indication: overload more than 2.5kgs, total 182.5kgs

display "Err"

Best working temperature: 41°F - 95°F (5 ~ 35°C)

Storage temperature: 14°F - 140°F (-10 ~ 60°C)

Moisture Environment: \leq 90%RH

Model No: 01350

ONE YEAR LIMITED WARRANTY

Ginsey Home Solutions sells its products with the intent that they are free of defects in manufacture and workmanship for a period of one year from the date of original purchase. Ginsey Home Solutions warrants that its products will be free of defects in material and workmanship under normal use and service.

For warranty service call:

Ginsey Home Solutions
2078 Center Square Road
Swedesboro, NJ 08085
1-800-257-7844
service@ginsey.com

Customer Service is available
8:30am - 5:00pm (EST)
Monday - Friday

**SHARPER
IMAGE®**

Made in China.
For more information on
Sharper Image products,
please visit: www.sharperimage.com

©2019 Sharper Image. Sharper Image® name and logo are registered trademarks. All rights reserved. Manufactured, marketed and distributed under license by Ginsey Home Solutions, Swedesboro, NJ 08085.