

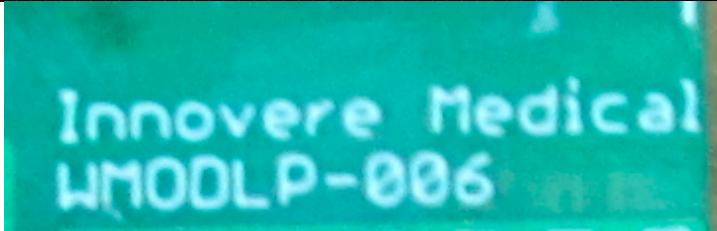


Exhibit: Sample Label and Location

Report File #: 7169006356RB-000

Client	Innovere Medical	 Canada
Product	WMODHP	
Standard(s)	RSS 247 Issue 1:2017 FCC Part 15 Subpart 15.247: 2018	

FCC ID: 2ATDA-WMODLP6
IC: 25063-WMODLP6

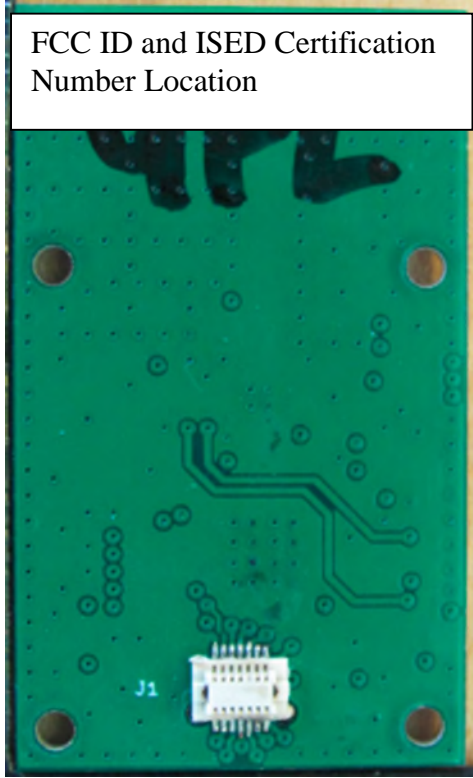


Font size: roughly 1.5mm tall, 1mm wide



PCB Front

Client	Innovere Medical	 Canada
Product	WMODHP	
Standard(s)	RSS 247 Issue 1:2017 FCC Part 15 Subpart 15.247: 2018	



PCB Rear