

# SmartMat (SM-W32/SM-W42)

## Quick Start Manual



**Ver 1.2 November, 2018**

## Table of Contents

---

1. Initial Set-Up .....	
1-0. Things Required for Initial Set-up .....	3
1-1. 0kg Reset (Required to Conduct Right After Inserting Batteries) .....	4
1-2. Wi-Fi Settings .....	4
1-3. Prepare the Mat Management Software .....	5
 2. How to Use SmartMat .....	
2-1. How to Use the Mat Management Software .....	9
2-2. Troubleshooting .....	10
2-3. Online Support .....	11
2-4. For Further Information / Inquiry .....	12
 3. Basic Information .....	

## 1. Initial Set-Up

### Initial Set Up – Overall Flow



### 1-0. Things Required for Initial Set-up

#### SmartMat (Hardware)

#### Wi-Fi (2.4GHz)

- **SSID and Password**
  - ✧ Alphanumeric 8 to 63 characters
- **Security Limitation**
  - ✧ Secret mode: SmartMat can perform
  - ✧ MAC address verification: SmartMat can perform but please check with the network administrator in advance
  - ✧ DHCP: SmartMat does not perform. Please set up the WiFi
- **Number of SmartMats connectable simultaneously**
  - ✧ Number of SmartMat connectable simultaneously is largely subject to the WiFi router capacity. Please contact us for further details

#### Products That Will Be Measured ("Measured Products")

**Recommended Web Browser for Mat Management Screen:** Chrome (Ver68+), Safari (Ver11+), Firefox (Ver61+). **Note that the mat management screen does not work with Internet Explorer/Microsoft Edge**

**Log-in ID (Email address of mat administrator) and Password**

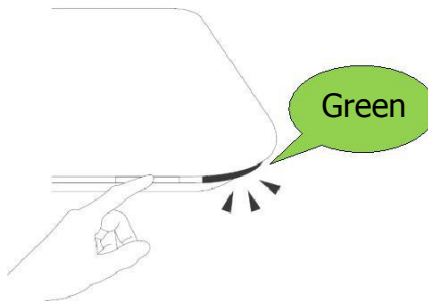
## 1-1. 0kg Reset (Required to Conduct Right After Inserting Batteries)

0kg reset is the auto-adjustment function based on the user location.

**⚠ SmartMat does not work without 0kg reset, even after inserting the dry cell batteries. Please make sure to carry out 0kg reset!**

- a. **Insert dry cell batteries and push 0kg reset button without putting anything on the SmartMat**

**DO NOT PUT ANYTHING ON THE MAT** when carrying out 0kg reset. You will need to insert dry cell batteries again if you put products on the mat during the 0kg reset.



## 1-2. Wi-Fi Settings

### a. Directly Connect User Wi-Fi Terminal and SmartMat

When you **keep pressing the SmartMat button for more than 5 seconds**, the lamp will blink green.

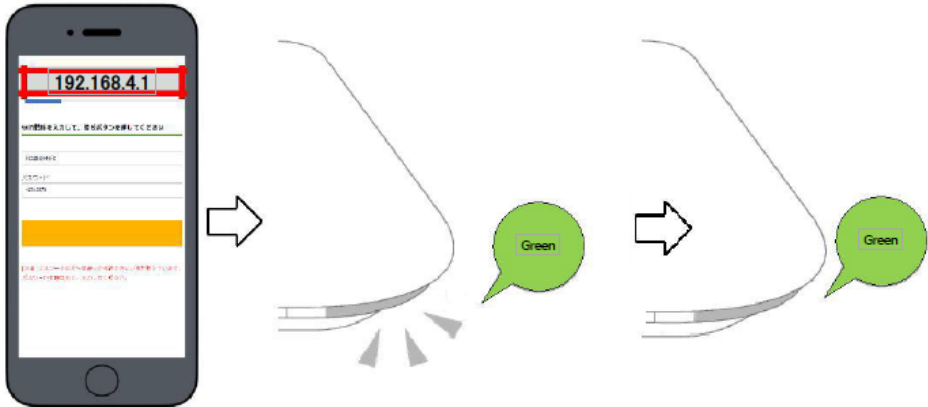
Once you see the blinking, place the user WiFi terminal to the SmartMat and choose "**smartmat**

**FX (last 7 digits of serial ID)"** and put the password "**smartmat**". Then the SmartMat will be connected to the WiFi.



## b. Set-up the WiFi connection via the recommended internet browser and connect SmartMat to the Internet

**Input "192.168.4.1" into your browser**, and the WiFi setting page will be displayed.  
**Input the SSID and Password**, and then the light will blink green.



**If the lamp turns red, it indicates SmartMat is not connected to the internet.**

Please confirm if SSID/PWD of WiFi is correct and whether Wi-Fi network is properly performed. After confirmation, see (1-2) and follow the instruction. For the WiFi environment, please see (1-0) of this manual. If the Wi-Fi network is not solid and SmartMat is not connected to the Internet, please follow (1-2b) nearby Wi-Fi router.

## 1-3. Prepare the Mat Management Software

Under the mat management software, you will be able to register/change the Measured Products, confirm the residual battery and WiFi connection status, and set up the order/notification method. For the effective usage of SmartMat, **please fill in the accurate data** based on the following instruction.



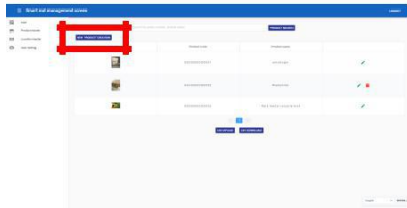
### a. Client Log-In

Go to the login page for the mat administrator (<https://app.smartmat.jp/login>) and login using login ID and password. **[Note]** If you purchase SmartMat from other distributors, you will need to create the login ID and register serial ID of SmartMat via our registration page (<https://app.smartmat.jp/register>)

## b. How to Set the Measured Products

### b1. Register the Measured Products to Products Master

Click New Product Creation from Product Master



Register Product and Product Picture

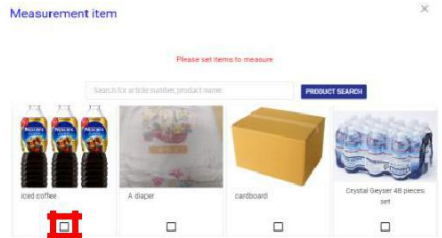


### b2. Link the Measured Products and SmartMat

1. Back to Top and Click Products Icon



Choose the Products from Products Master



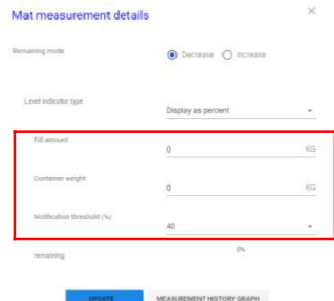
## c. How to Set the Measurement Parameters

Click Setting Icon in "Remaining" Row



Set Display Mode and Parameters

(Max & Unit Weight, Threshold etc.)



**Under the default settings, email alert generates when the remaining weight falls behind the preset threshold.** If you want to receive the email alert when the remaining weight exceeds the preset threshold, **change the Remaining Mode to "Increase".**

## d. Notification and Auto-Order Settings

Once the alert/order setting is complete, **automatic notification/order is being initiated at the preset threshold parameter.**



### d1. Auto Web-Order

Enter ID/PWD of the designated EC shops \_  
Customization required. Please contact us

### d2. Auto Email Order

Enter email address (Up to 3)  
 Enter email templates / Contents

### d3. Auto Fax Order

Enter fax number (no hyphen, up to 3) & templates  
\* eFax subscription required. Please contact us

### d4. Email Alert Only

Enter email address (Up to 3)  
 Enter email templates

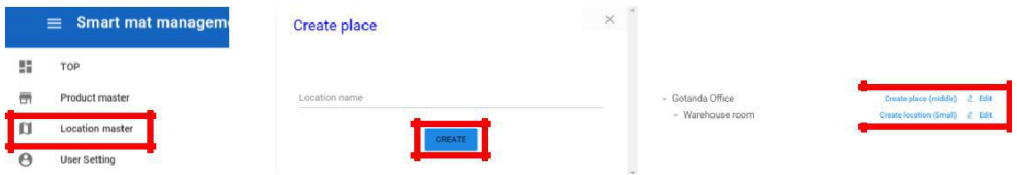
## e. Add the Mat Location (Optional)

Adding mat location is optional and not mandatory; however the management and sort-out function based on the location is available once the location is set. SmartMat can automatically sum-up the products where 1) the location is the same and 2) the measured products are the same.

### e1. Add the Location Master Data

Location master is comprised of 3 layers (Large, Middle and Small) and therefore you can manage the 3 layers based on your inventory management requirements. (Example: Office name (L), Room name (M), Detailed Location (S))

\* You will need to fill in all layer information if you wishes to use the location master. **Please fill in the middle and small location data as well.**



Click "Create location (large)" in the Location master and fill in the necessary data. Once the location (large) is created, also click location (middle) and location (small) and fill in the data subsequently.

## e2. Link the Measured Products and Location

Back to "TOP" and click icon in the "place" row

Designate the location of SmartMat at 3 layers (large, middle and small)



**Location (middle and small) should not be set as blank.** Please follow the guidance at (e1)



## 2. How to Use SmartMat

### 2-1. How to Use the Mat Management Software

#### a. Mat Management Screen

The screenshot shows the 'Smart mat management screen' with a sidebar on the left and a main content area. The sidebar contains links to Product master, Location master, User Setting, and a search filter. The main area displays a table of mat data with columns for Mat ID, Product, remaining, place, battery, connection, latest order, purchase settings, and Bluetooth. Callouts 1-14 point to specific elements: 1. Product master page, 2. Location master page, 3. User setting page, 4. Refine search, 5. Important messages, 6. Setting up measurement items, 7. Level indicator + parameter setting, 8. Location setting, 9. Battery level, 10. Wi-Fi connection status, 11. Latest order confirmation, 12. Purchase / notification settings, 13. Upload CSV, 14. Download CSV.

- ① Product master page
- ② Location master page
- ③ User setting page
- ④ Refine search
- ⑤ Important messages
- ⑥ Setting up measurement items
- ⑦ Level indicator + parameter setting
- ⑧ Location setting
- ⑨ Battery level
- ⑩ Wi-Fi connection status
- ⑪ Latest order confirmation
- ⑫ Purchase / notification settings
- ⑬ Upload CSV
- ⑭ Download CSV

#### b. How to Change Wi-Fi

Follow (1-2b) and input the new WiFi information, then the settings will be updated.

#### c. Change the Measured Products

Once you register the new measured products, follow (1-3-b2) and link the mat and products again. (You will need to register the products again)

#### d. Data Measurement Record of Measured Products

① Click Setting Icon in "Remaining" Row



② Click "Measurement history graph"

The image shows the 'Measurement history graph' settings page. It includes fields for 'Level indicator type', 'Display as percent', 'Fill amount', 'Container weight', and 'Notification threshold (%)'. A red box highlights the 'MEASUREMENT HISTORY GRAPH' button at the bottom.



## e. Email Address and Notification Coverage of Recipients

Mat management administrator will receive the notification of all the SmartMats; each user will receive notification on the relevant SmartMat he/she monitors.

		Overall Administrator	User	Vendor
Type of e-mail address		Administrator e-mail address = Login ID	Notification address (up to 3)	Supplier address (up to 3)
Authority		Setting of all products by mail receipt management software	Receive e-mail of setting mat	Receiving Order Mail
Periodic mail	Notice once a week, the state of all mats, the remaining amount of goods	<input type="radio"/>	—	—
Manual measurement mail	When you press the button, notify the status of the pressed mat, the remaining amount of the item	<input type="radio"/>	Setting mat only	—
Measurement item Remaining amount alert	When the remaining amount crosses the threshold value Alert	<input type="radio"/>		—
Battery remaining alert	Alert when the remaining battery power is below 25%	<input type="radio"/>		—
Wi-Fi connection alert	Alert when there is no connection for a certain period of time	<input type="radio"/>		—
Order confirmation - Completion mail	Pre-confirmation e-mail of Web / mail / fax order Completion mail	<input type="radio"/>		—
Order mail	Order mail when ordering mail	<input checked="" type="radio"/>	<input checked="" type="radio"/>	<input type="radio"/>

**Notification and email alert are delivered to you every 10:00am (default settings and can be changed)**

## f. Change the Email Address (Per Each SmartMat)

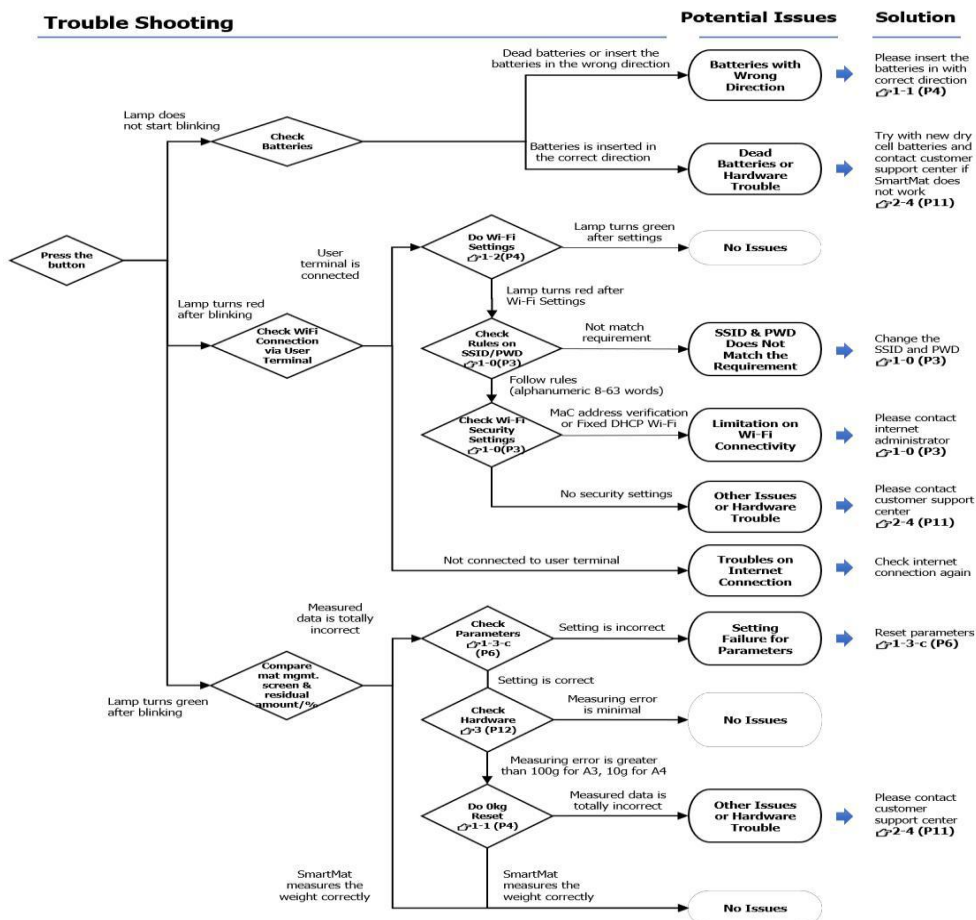
Click the purchase/notification button in each SmartMat and change the purchase/notification methodologies based on the guidance of (1-3d).

## 2-2. Troubleshooting

**STEP1 (Restart)**: Reinsert dry cell batteries and carry out 0kg reset, see “**1-1**”

**STEP2 (Diagnosis)**: If the issues are not solved after carrying out 0kg reset, see the following diagram and identify the potential troubles.

**STEP3 (Factory Reset Button):** If the issues are not solved after STEP2, press the factory reset button longer using the pin to reset to the factory set initial configuration.



## 2-3. Online Support

Please see our online support for the configuration, basic function, troubleshooting and the latest news and additional services. Our support desk information is available via online. (Contact information is different subject to where you purchase SmartMat)

**[Smart Shopping Online Support]** Web Page URL: <https://smartmat.jp/help/>

## 2-4. For Further Information / Inquiry

Please contact us in case the issues are not solved after (2-2) Troubleshooting, and (2-3) Support.

**[ Smart Shopping Customer Support for SmartMat]**

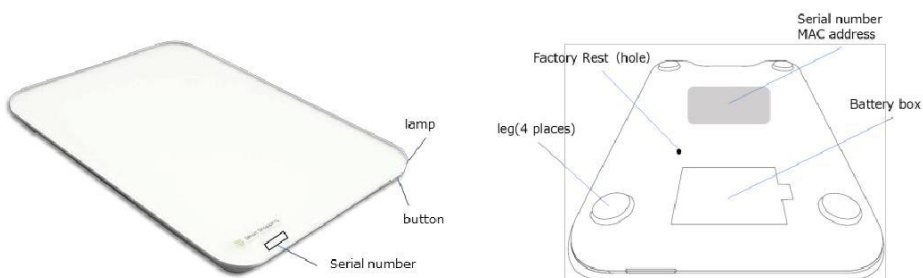
**Email : support@smartmat.jp**

**Call : +81-50-1746-8179 (For Current SmartMat User Only)**

**Operating Hours: 9:00am to 6:00pm (Except for Sat, Sun and Year End Holidays)**

## 3. Basic Information

### Basic Configuration of SmartMat



### Basic Function of SmartMat

Item	Description	
Product Name	SM-W32 (SmartMat A3 Ver1)	SM-W42 (SmartMat A4 Ver1)
Size	400 x 300 x 30mm	300 x 200 x 30mm
Min. Measurable Unit	Per 100g	Per 10g
Max. Measurable Weight	100kg	30kg
Min. Measurable Weight	100g	10g
Hardware Weight	Approx. 2.4kg (Body only)	Approx. 1.3kg (Body only)
Communication Method	Wi-Fi 2.4GHz	
Power Plug	Dry cell 4 AA3 Batteries. 6V AC adapter also connectable (sold separately)	
Dry Cell Duration	Approx. 1 year per standard data frequency	

Operating Environment	0°C~35°C / 30~85%RH
Storage Environment	-20°C~60°C 10~95%RH
Splash-Proof	IPX3: Resistant to spray water at 60C from vertical

### Cautiously Statement – In order to use SmartMat safely

PROHIBITED	CAUTION
<ul style="list-style-type: none"> <li>✧ Do not use or store the SmartMat within the reachable scope of babies and infants.</li> <li>✧ Do not use in aircraft or hospitals, where radio communication is prohibited.</li> <li>✧ Do not give a strong shock to the body of the SmartMat, including but not limited to, knocking down or dropping the body, and dropping things on the mat.</li> <li>✧ Do not use it where the floor is wet or slippery. Do not deliberately spray water.</li> <li>✧ Do not decompose or remodel the mat.</li> <li>✧ Do not put the products that are heavier than the maximum measurable weight.</li> <li>✧ Do not use or store the SmartMat in the environment where SmartMat does not perform properly.</li> <li>✧ Do not spill hot water, benzene, kerosene and other dangerous solvent.</li> </ul>	<p>Please strictly follow the guidance below in order to properly monitor the residual amount/%</p> <ul style="list-style-type: none"> <li>✧ Regularly carry out 0kg adjustment</li> <li>✧ Use SmartMat under the recommended Wi-Fi environment</li> <li>✧ Use the SmartMat at the flat and stable place/ground (SmartMat may not properly work at the softened floor)</li> <li>✧ Do not use the SmartMat in the environment where the temperature difference is sharp</li> </ul>

### FCC Statement

Any Changes or modifications not expressly approved by the party responsible for compliance could void the user's authority to operate the equipment.

This device complies with part 15 of the FCC Rules. Operation is subject to the following two conditions:

- (1) This device may not cause harmful interference, and
- (2) This device must accept any interference received, including interference that may cause undesired operation.

### FCC Radiation Exposure Statement:

This equipment complies with FCC radiation exposure limits set forth for an uncontrolled environment. This equipment should be installed and operated with minimum distance 20cm between the radiator & your body.