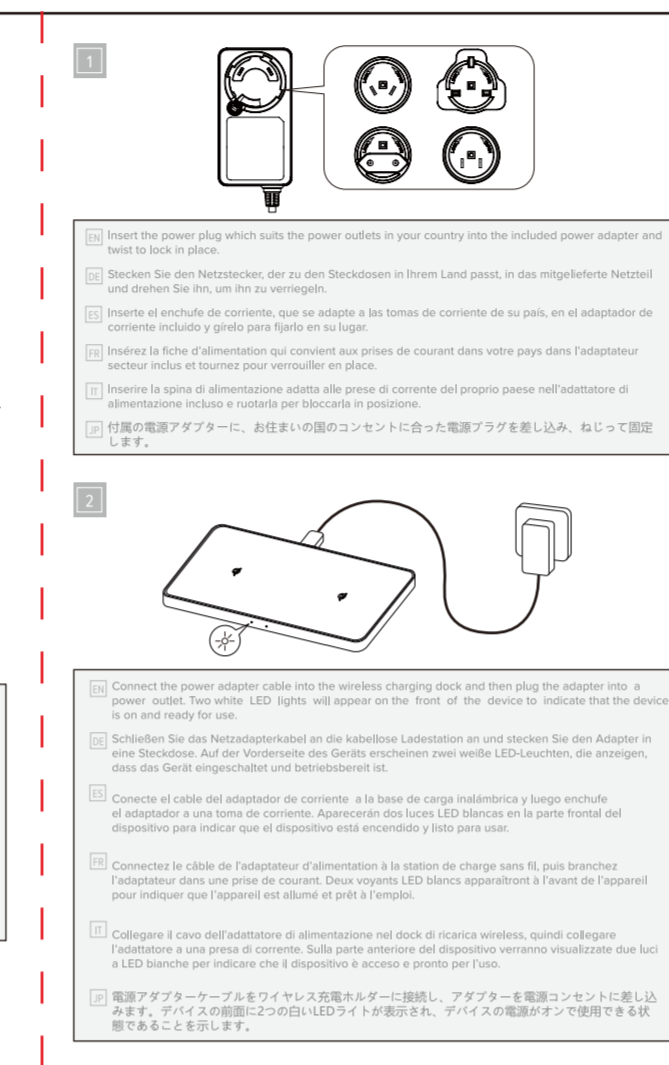
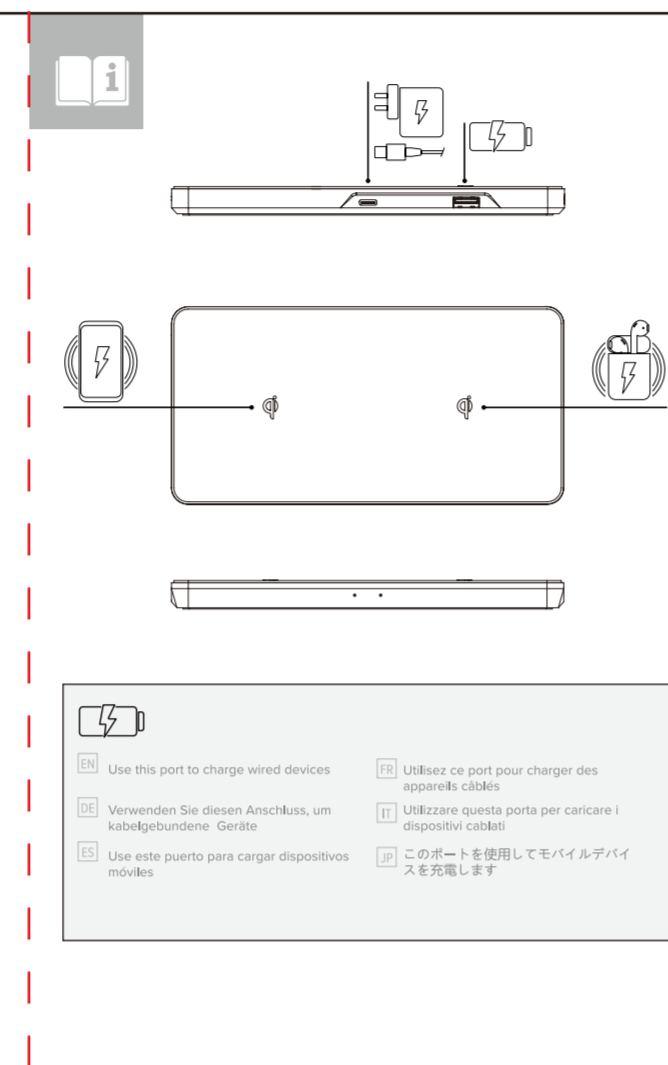
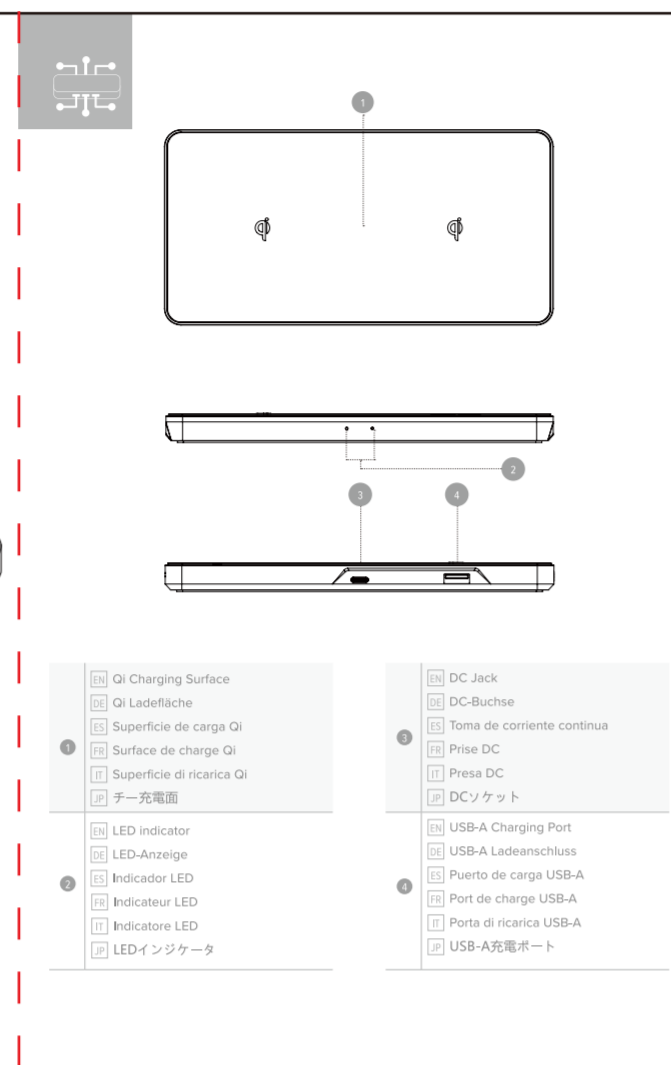
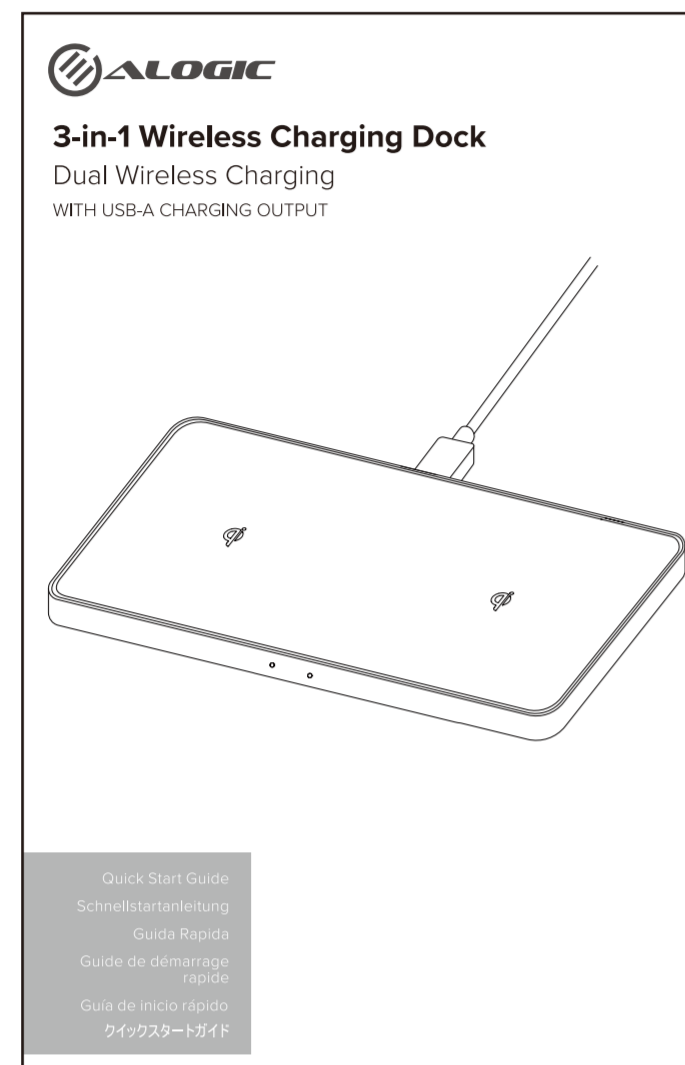
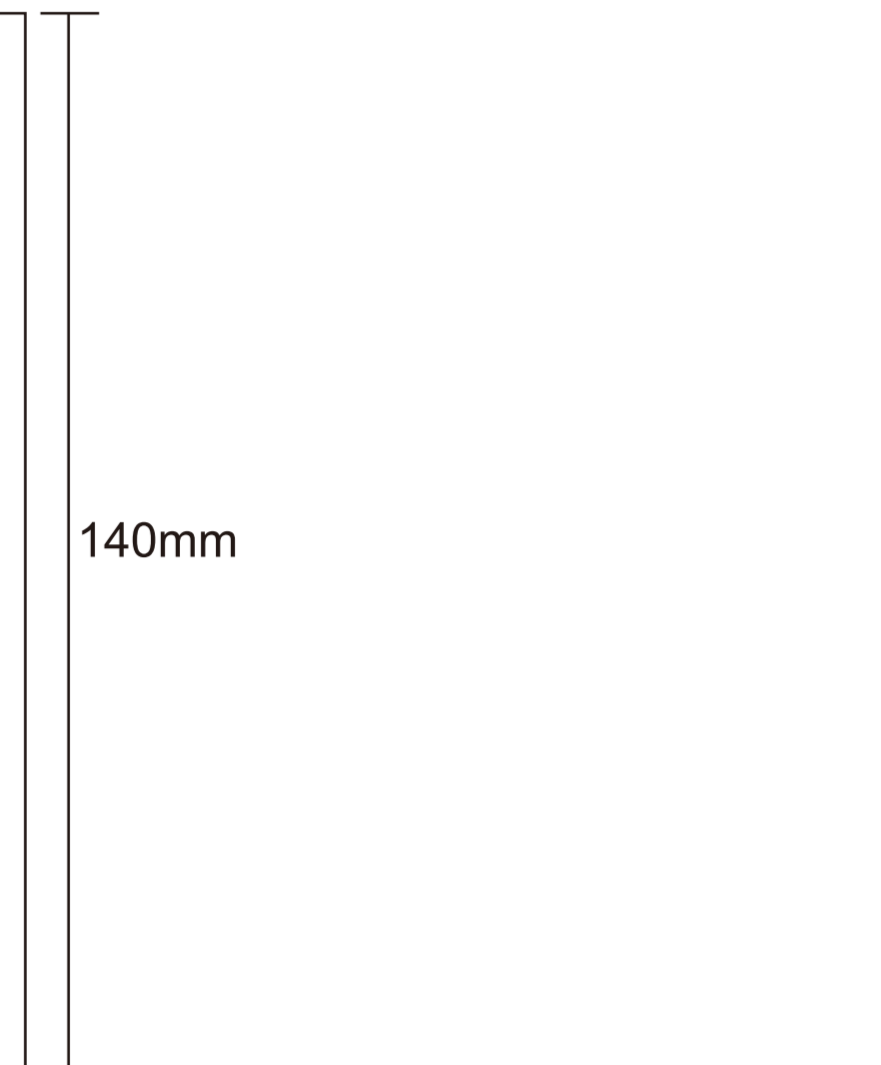


Table with 5 columns: Version (版本), Modification Content (修改内容), Modifier (修改人), Date (日期), Remarks (备注). Row 1: A0, New drawing release (新图发行), Chen Tingting (陈婷婷), 2020-07-13.



Specifications | Características técnicas | Especificaciones | 仕様書. Table with 2 columns: Specification Name and Value. Includes dimensions, weight, materials, and output power.

FCC Compliance Statement. This device complies with Part 15 of the FCC Rules. Operation is subject to the following two conditions: (1) This device may not cause harmful interference, and (2) This device must accept any interference received...



Operating Instructions. 1. Place your wireless device with wireless charging on top of the wireless charging dock. There are two charging options left and right sides of the charging pad when the device is to be charged simultaneously.

Betriebsanleitung. 1. Legen Sie Ihr Mobiltelefon in den Ladestationsbereich des 3-in-1-Ladegeräts auf die Ladefläche. Mit dem smart Ladefunktion Ihres rechts und links Seiten des Ladegeräts können zwei Geräte gleichzeitig geladen werden.

Instrucciones de uso. Dispositivos inalámbricos de carga. Coloque el dispositivo inalámbrico sobre la almohadilla de carga inalámbrica. Hay dos áreas de carga (la izquierda y derecha de la almohadilla de carga) que permiten que dos dispositivos se carguen simultáneamente.

Mode d'emploi. Recharger les appareils sans fil. Placez votre objet à recharger sans fil sur le dessus du socle de chargement sans fil. Il existe deux zones de chargement (à gauche et à droite de la table de chargement) qui permettent de charger deux appareils simultanément.

Instruzioni per il funzionamento. Ricarica dei dispositivi wireless. 1. Posizionare il dispositivo con ricarica wireless sulla parte superiore del pad di ricarica wireless. Ci sono due punti di ricarica (a sinistra e a destra del tavolo di ricarica) che consentono a due dispositivi di essere caricati contemporaneamente.

取扱説明書. ワイヤレスデバイスの充電. ワイヤレス充電パッドのワイヤレス充電パッドの上におきます。この充電パッド（充電パッドの左右両側）をそれぞれ、2つのワイヤレス充電パッドとして使えます。

FCC Warning. This device complies with part 15 of the FCC Rules. Operation is subject to the following two conditions: (1) This device may not cause harmful interference, and (2) This device must accept any interference received, including interference that may cause undesired operation.

- 技术要求: 1.纸张无开裂, 无破损, 无变形, 印刷清晰, 不偏色 2.开窗PET片来料时需粘合在彩盒开窗处, 要求无缝隙, 无刮痕, 无偏移 (以实际图纸结构检查为准) 3.缝合间隙需≤0.5mm,或依客户标准 4.所有材质必须符合RoHS要求, 且需附上RoHS报告 (客户有要求的依客户标准) 5.符合DBK公司检测标准 6.新图版本图纸发行, 旧版本图纸需回收 7.印刷内容请参考电子档案

Table with columns for File No. (文件编号), Product No. (产品型号), Part Name (零件名称), Size/Color (尺寸/颜色), Tolerance (公差), Material (材质), and Drawing No. (图号). Includes DBK logo and drawing symbols.