
This device complies with part 15 of the FCC Rules. Operation is subject to the following two conditions:

(1) This device may not cause harmful interference, and (2) this device must accept any interference received, including interference that may cause undesired operation.

Note: This equipment has been tested and found to comply with the limits for a Class B digital device, pursuant to part 15 of the FCC Rules. These limits are designed to provide reasonable protection against harmful interference in a residential installation. This equipment generates, uses and can radiate radio frequency energy and, if not installed and used in accordance with the instructions, may cause harmful interference to radio communications. However, there is no guarantee that interference will not occur in a particular installation. If this equipment does cause harmful interference to radio or television reception, which can be determined by turning the equipment off and on, the user is encouraged to try to correct the interference by one or more of the following measures:

- Reorient or relocate the receiving antenna.
- Increase the separation between the equipment and receiver.
- Connect the equipment into an outlet on a circuit different from that to which the receiver is connected.
- Consult the dealer or an experienced radio/TV technician for help.

Note: The Grantee is not responsible for any changes or modifications not expressly approved by the party responsible for compliance. Such modifications could void the user's authority to operate the equipment.

The device has been evaluated to meet general RF exposure requirement.

This equipment complies with FCC's RF radiation exposure limits set forth for an uncontrolled environment. This device and its antenna(s) must not be co-located or in conjunction with any other antenna or transmitter.

REMOTE CONTROL OPERATING INSTRUCTIONS

Install a 12V battery into the remote control. To prevent damage to the remote control, remove the battery if not used for long periods of time.



WARNING: Do not short-circuit, disassemble, heat up, connect improperly, or dispose of used batteries in fire. Do not recharge or mix batteries with used or other battery types. Immediately remove used batteries.

INSTALLATION INSTRUCTIONS

CAUTION: THIS IN WALL TRANSMITTER SHOULD BE USED ONLY WITH THE FAN MODELS LISTED BELOW: AC-23856, AC-23960, AC-24060, AC-24344.

1. INSTALLING THE IN WALL TRANSMITTER

Install the in wall transmitter system using an existing wall switch outlet box. Make sure the electrical power is **TURNED OFF** at the main panel before continuing.

Step 1. Remove the existing wall plate and the old switch from the wall outlet box. Wire nut the **BLACK leads (hot)** together and push back inside the outlet box. (Fig. 1)

Step 2. Install the in wall transmitter and face plate to the existing wall outlet box with 4 screws provided. (Fig. 2)

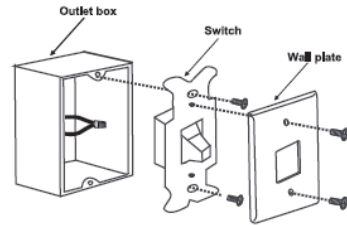


Figure 1

2. INSTALLING THE BATTERY

Remove the decor plate on the transmitter and install a 12V battery included with the in wall transmitter. (Fig. 3)

3. LEARNING PROCESS

NOTE: After turning the AC power back on, do not press any other button on the remote control before pressing the "set" button. Doing so will cause the learning procedure to fail and the power to the fan will have to be turned off again to start over.

Turn main power to fan back on and within 30 seconds press and hold the "set" button on the remote for 5 seconds to sync the transmitter to the fan.

Once the fan has detected the transmitter, the light on the fan will blink twice to indicate your fan is now ready to use.

Fans without light-kits have no indicator but will be ready to use after holding the button

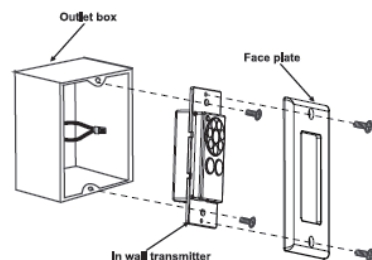


Figure 2

4. OPERATING IN WALL TRANSMITTER

Restore power to ceiling fan and test for proper operation.

A. \odot , 1, 2, 3, 4, 5, 6 buttons:

These seven buttons are used to set the fan speed as follows:

\odot = fan on/off

1 = low speed 2 = medium low speed 3 = medium speed

4 = medium high speed 5 = high speed 6 = Extra high speed

B. ↺ button:

Fan reverse button

This button controls the light. Press and release the button to turn the light ON or OFF. Press and hold the button to set the desired brightness. The light key has an auto-resume, it will stay at the same brightness as the last time it was turned off.

D. ☺ button:

Select the desired color temperature.

NOTE: To operate the reverse function on this fan, press the reverse button while the fan is running at any speed.

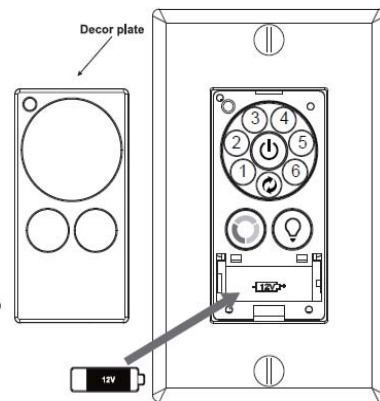


Figure 3