

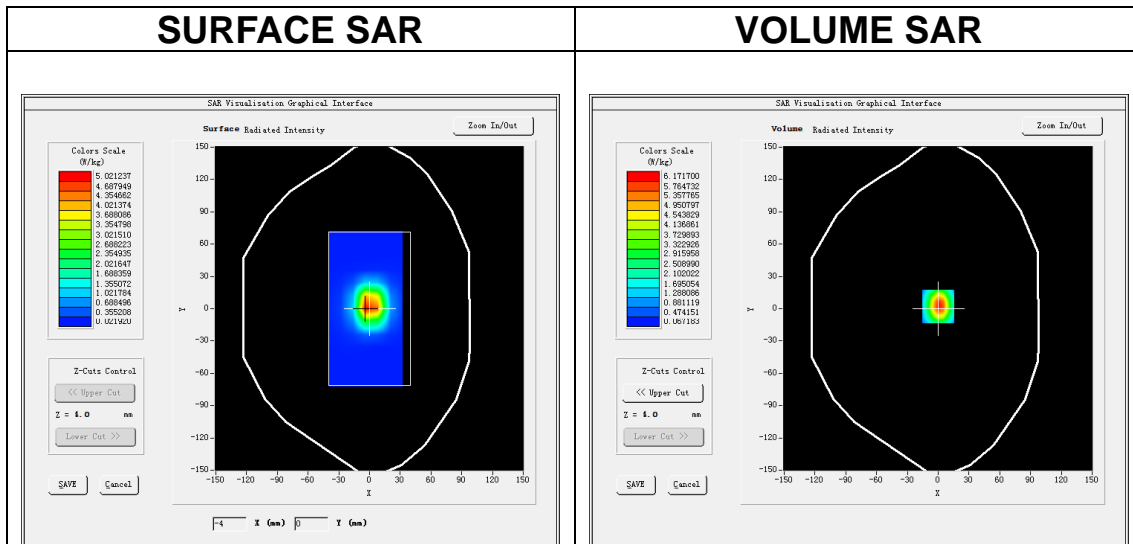
MEASUREMENT 12

A. Experimental conditions.

Area Scan	<u>dx=12mm dy=12mm, h= 5.00 mm</u>
ZoomScan	<u>7x7x7,dx=5mm dy=5mm dz=5mm</u>
Phantom	<u>Validation plane</u>
Device Position	<u>Dipole</u>
Band	<u>CW2600</u>
Channels	<u>Middle</u>
Signal	<u>CW (Crest factor: 1.0)</u>

B. SAR Measurement Results

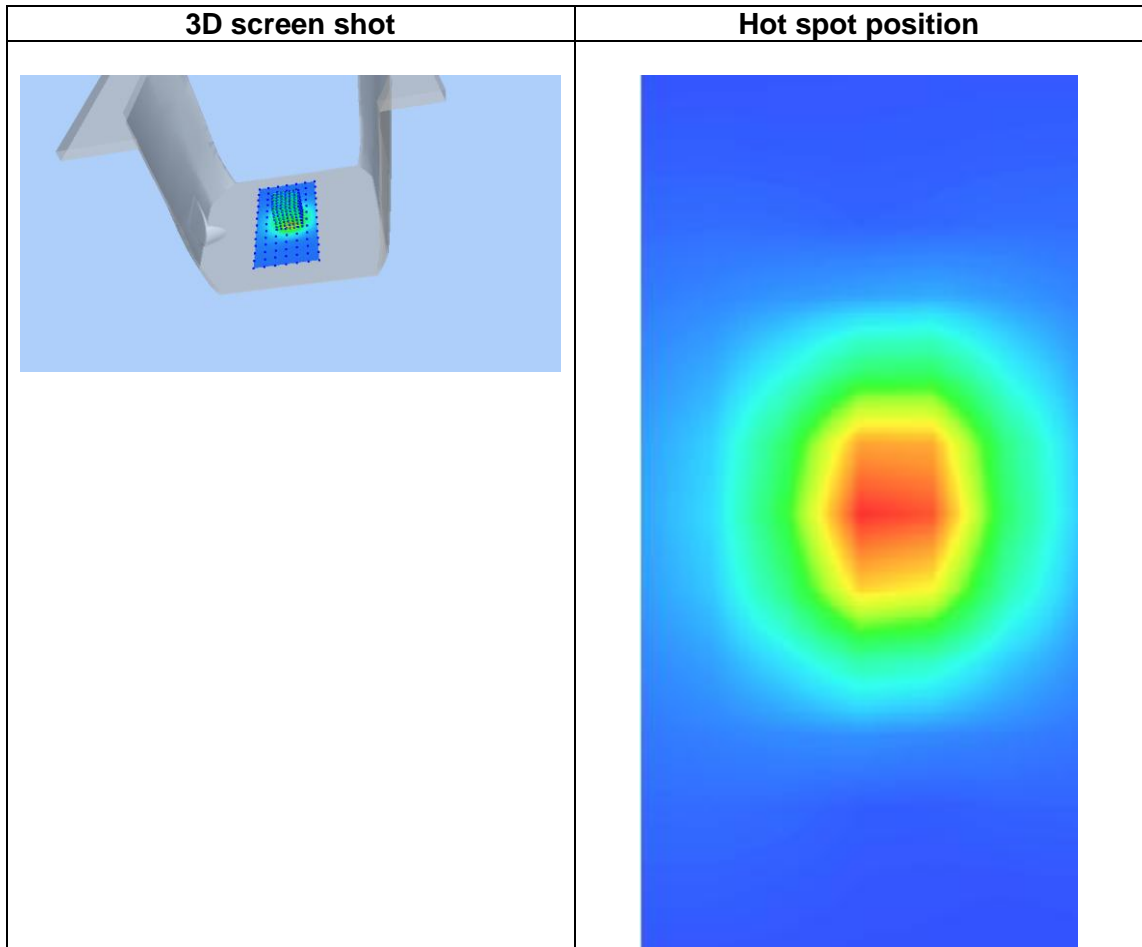
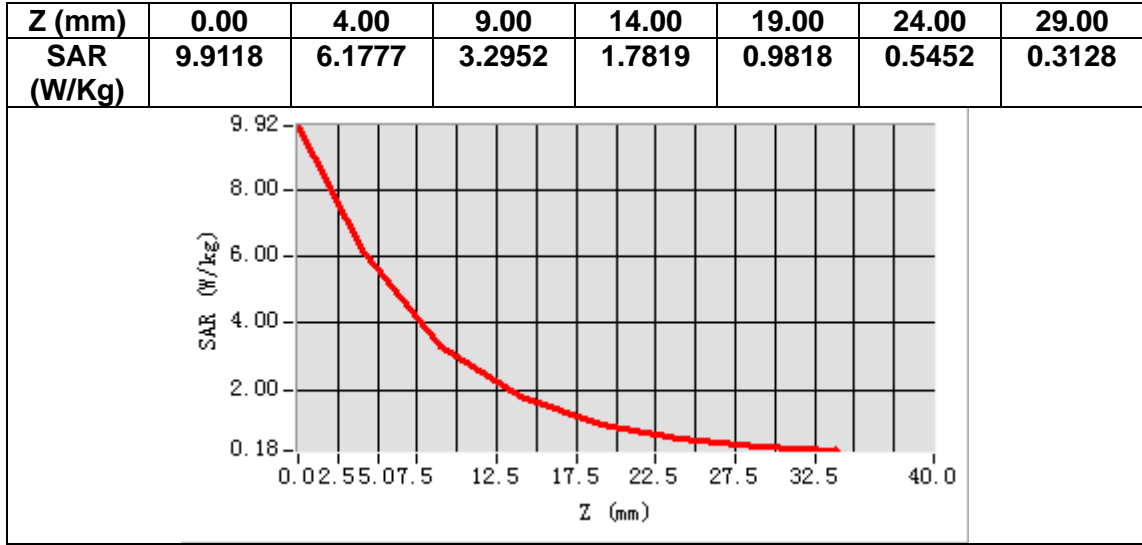
Frequency (MHz)	2600.000000
Relative permittivity (real part)	52.672866
Relative permittivity (imaginary part)	15.230101
Conductivity (S/m)	2.203465
Variation (%)	-1.220000



Maximum location: X=0.00, Y=2.00

SAR Peak: 9.99 W/kg

SAR 10g (W/Kg)	2.463324
SAR 1g (W/Kg)	5.565188



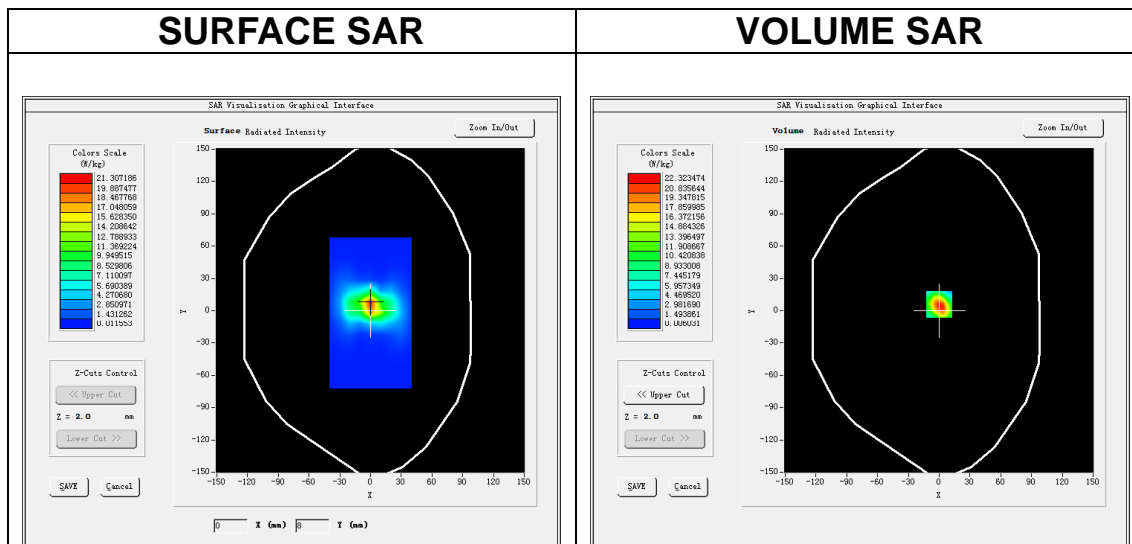
MEASUREMENT 13

A. Experimental conditions.

Area Scan	<u>dx=10mm dy=10mm, h= 2.00 mm</u>
ZoomScan	<u>7x7x12,dx=4mm dy=4mm dz=2mm</u>
Phantom	<u>Validation plane</u>
Device Position	<u>Dipole</u>
Band	<u>CW5200</u>
Channels	<u>Middle</u>
Signal	<u>CW (Crest factor: 1.0)</u>

B. SAR Measurement Results

Frequency (MHz)	5200.000000
Relative permittivity (real part)	35.832204
Relative permittivity (imaginary part)	16.043542
Conductivity (S/m)	4.632321
Variation (%)	1.660000

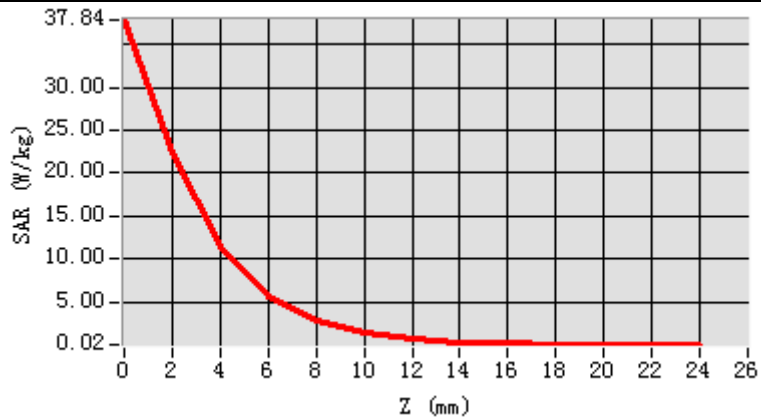


Maximum location: X=0.00, Y=6.00

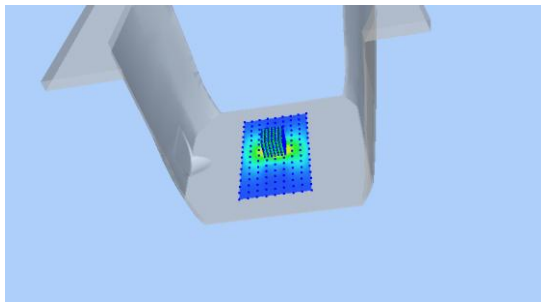
SAR Peak: 40.06 W/kg

SAR 10g (W/Kg)	5.584495
SAR 1g (W/Kg)	16.077221

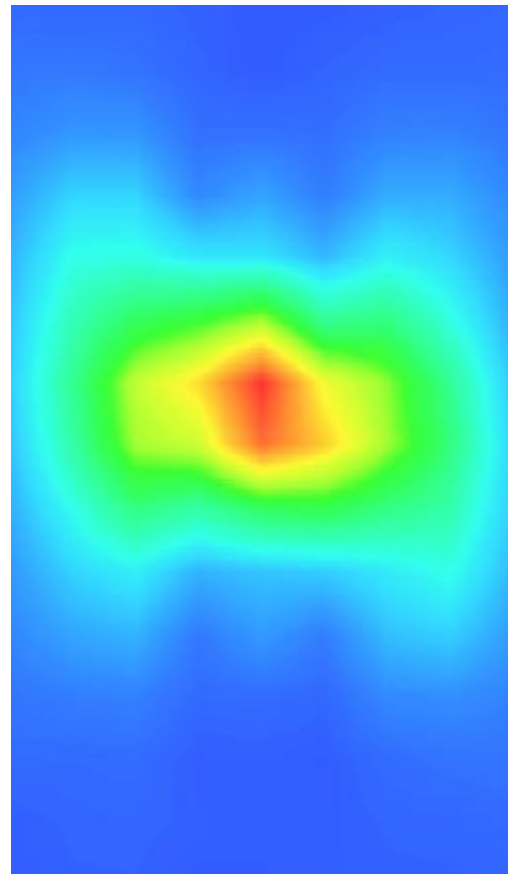
Z (m m)	0.00	2.00	4.00	6.00	8.00	10.0	12.0	14.0	16.0	18.0	20.0	22.0
SAR R (W/ Kg)	37.8 356	22.3 278	11.3 730	5.66 18	2.82 55	1.40 93	0.71 24	0.36 60	0.18 08	0.10 12	0.05 13	0.03 23



3D screen shot



Hot spot position



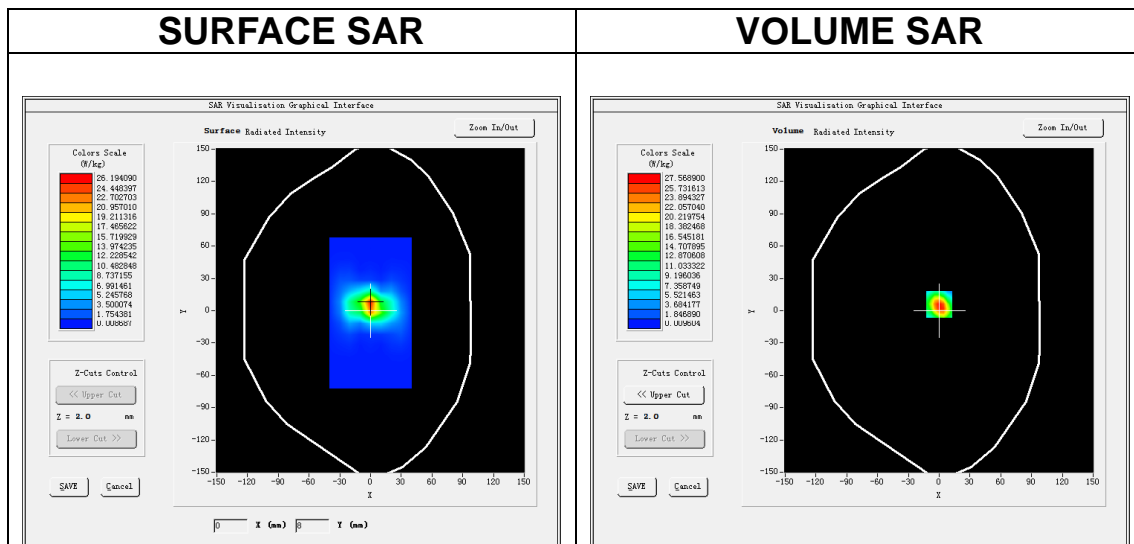
MEASUREMENT 14

A. Experimental conditions.

Area Scan	<u>dx=10mm dy=10mm, h= 2.00 mm</u>
ZoomScan	<u>7x7x12,dx=4mm dy=4mm dz=2mm</u>
Phantom	<u>Validation plane</u>
Device Position	<u>Dipole</u>
Band	<u>CW5200</u>
Channels	<u>Middle</u>
Signal	<u>CW (Crest factor: 1.0)</u>

B. SAR Measurement Results

Frequency (MHz)	5200.000000
Relative permittivity (real part)	49.662845
Relative permittivity (imaginary part)	18.301441
Conductivity (S/m)	5.293842
Variation (%)	4.490000

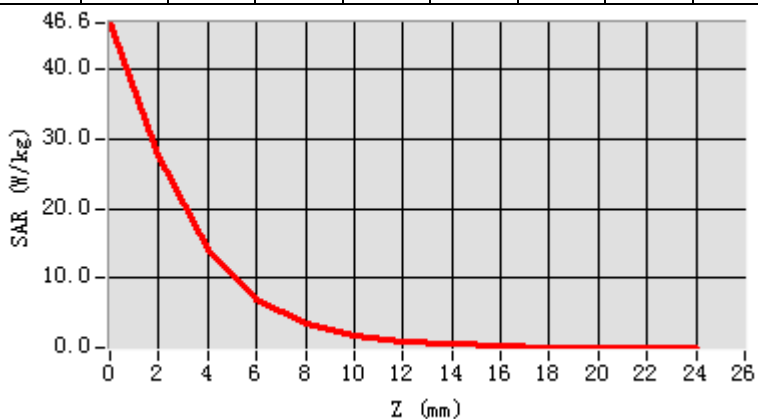


Maximum location: X=0.00, Y=6.00

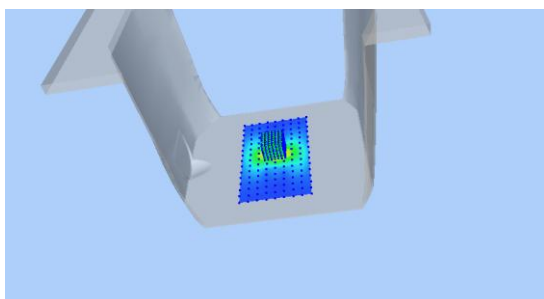
SAR Peak: 49.61 W/kg

SAR 10g (W/Kg)	5.510184
SAR 1g (W/Kg)	15.677246

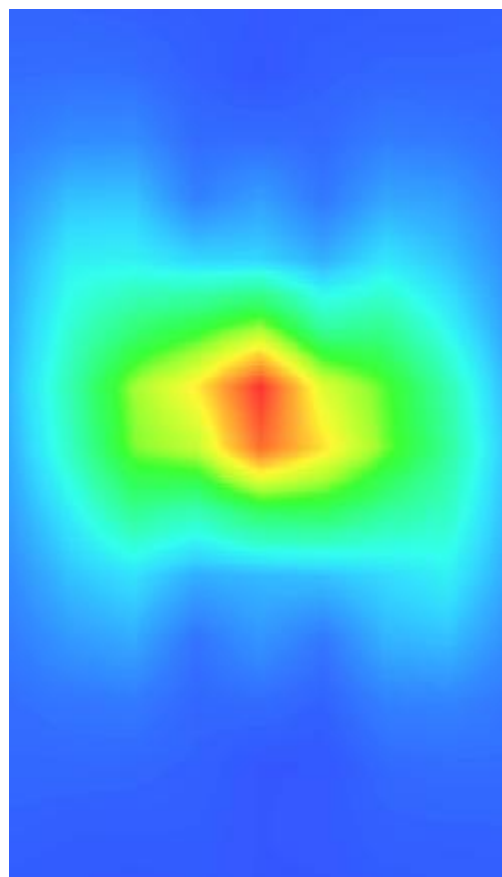
Z (m m)	0.00	2.00	4.00	6.00	8.00	10.0	12.0	14.0	16.0	18.0	20.0	22.0
SAR (W/ Kg)	46.6 150	27.5 644	14.0 668	7.05 91	3.59 28	1.78 02	0.89 38	0.46 70	0.24 75	0.13 53	0.06 50	0.04 000



3D screen shot



Hot spot position



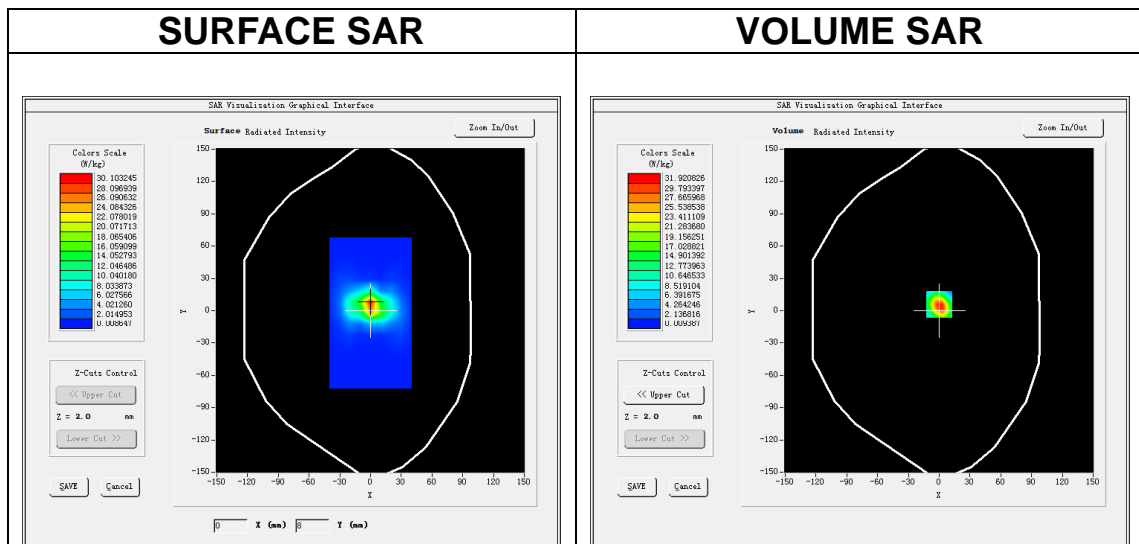
MEASUREMENT 15

A. Experimental conditions.

<u>Area Scan</u>	<u>dx=10mm dy=10mm, h= 2.00 mm</u>
<u>ZoomScan</u>	<u>7x7x12,dx=4mm dy=4mm dz=2mm</u>
<u>Phantom</u>	<u>Validation plane</u>
<u>Device Position</u>	<u>Dipole</u>
<u>Band</u>	<u>CW5800</u>
<u>Channels</u>	<u>Middle</u>
<u>Signal</u>	<u>CW (Crest factor: 1.0)</u>

B. SAR Measurement Results

Frequency (MHz)	5800.000000
Relative permittivity (real part)	34.741512
Relative permittivity (imaginary part)	16.083082
Conductivity (S/m)	5.180981
Variation (%)	1.880000

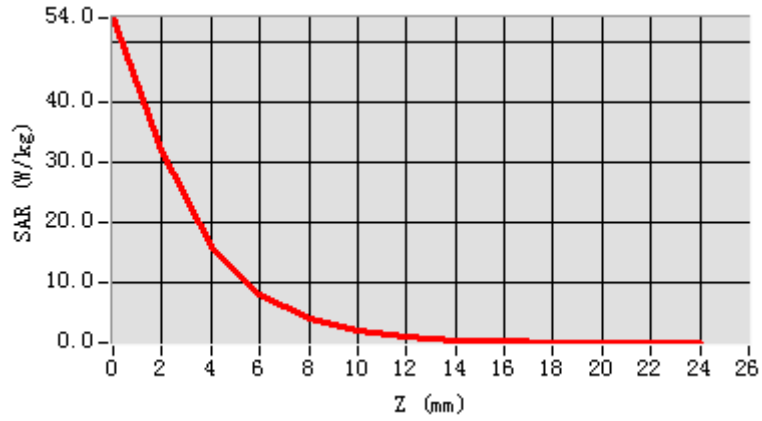


Maximum location: X=0.00, Y=6.00

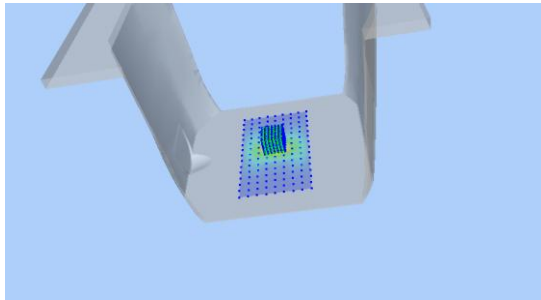
SAR Peak: 57.37 W/kg

SAR 10g (W/Kg)	6.256095
SAR 1g (W/Kg)	18.410093

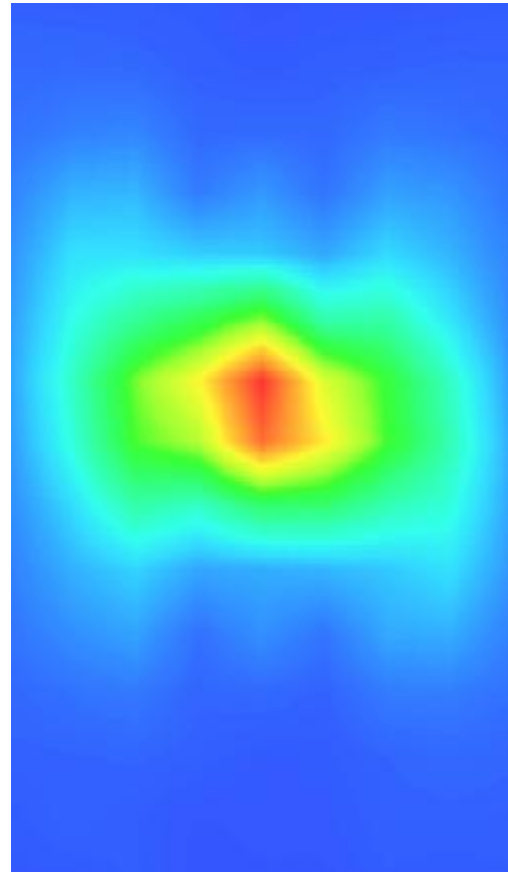
Z (m m)	0.00	2.00	4.00	6.00	8.00	10.0	12.0	14.0	16.0	18.0	20.0	22.0
SAR R (W/ Kg)	54.0 337	31.9 251	16.1 709	8.17 95	4.08 15	2.05 72	1.03 29	0.51 77	0.27 63	0.15 42	0.07 82	0.04 46



3D screen shot



Hot spot position



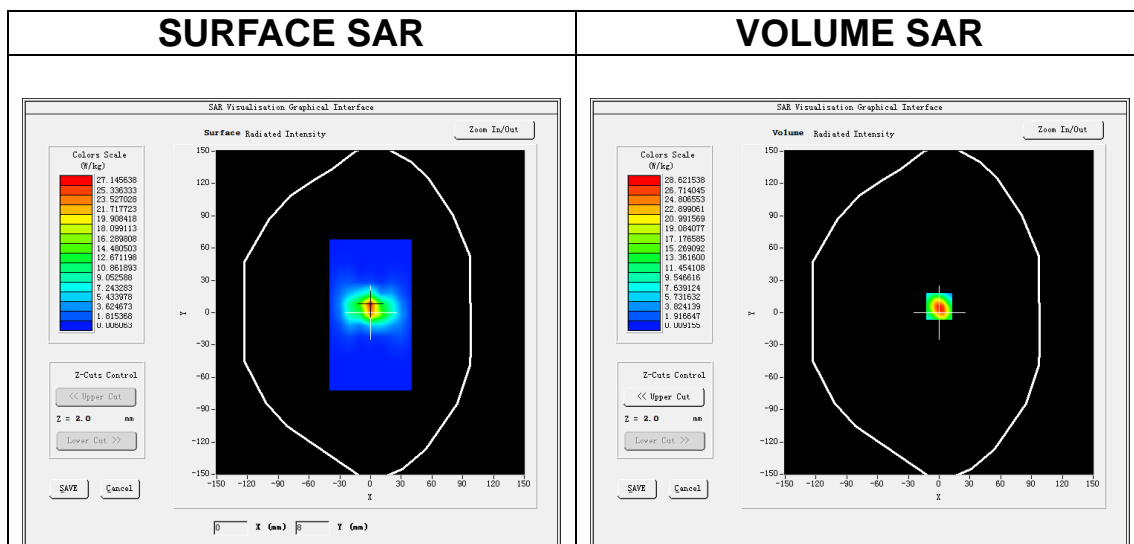
MEASUREMENT 16

A. Experimental conditions.

Area Scan	<u>dx=10mm dy=10mm, h= 2.00 mm</u>
ZoomScan	<u>7x7x12,dx=4mm dy=4mm dz=2mm</u>
Phantom	<u>Validation plane</u>
Device Position	<u>Dipole</u>
Band	<u>CW5800</u>
Channels	<u>Middle</u>
Signal	<u>CW (Crest factor: 1.0)</u>

B. SAR Measurement Results

Frequency (MHz)	5800.000000
Relative permittivity (real part)	48.350523
Relative permittivity (imaginary part)	18.820043
Conductivity (S/m)	6.061524
Variation (%)	1.340000

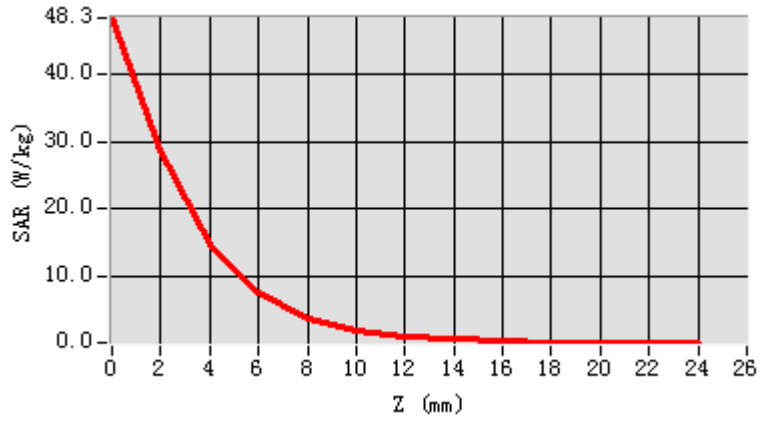


Maximum location: X=0.00, Y=6.00

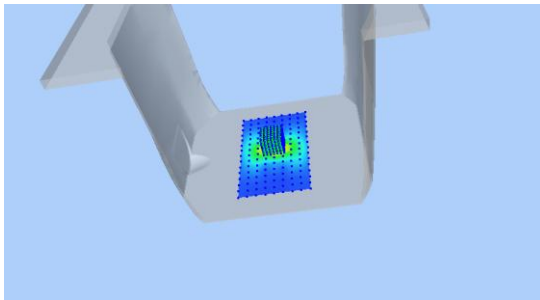
SAR Peak: 51.30 W/kg

SAR 10g (W/Kg)	5.840184
SAR 1g (W/Kg)	16.911052

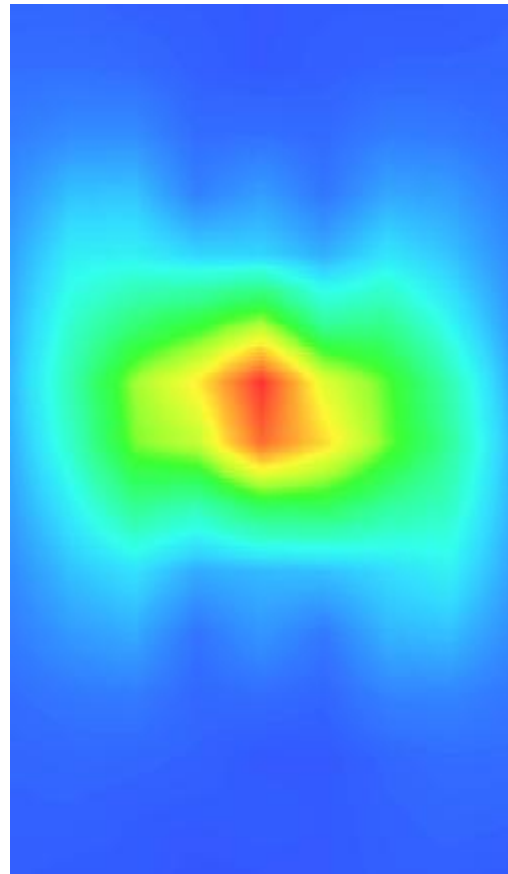
Z (m m)	0.00	2.00	4.00	6.00	8.00	10.0	12.0	14.0	16.0	18.0	20.0	22.0
SAR (W/ Kg)	48.3	28.6	14.6	7.40	3.68	1.83	0.93	0.47	0.25	0.13	0.07	0.05
	472	209	589	39	57	35	18	60	13	08	83	22



3D screen shot



Hot spot position



13. Appendix C. Plots of High SAR Measurement

Table of contents
MEASUREMENT 1 GSM 850 Head
MEASUREMENT 2 GSM 850 Body
MEASUREMENT 3 GSM 1900 Head
MEASUREMENT 4 GSM 1900 Body
MEASUREMENT 5 WCDMA Band 2 Head
MEASUREMENT 6 WCDMA Band 2 Body
MEASUREMENT 7 WCDMA Band 4 Head
MEASUREMENT 8 WCDMA Band 4 Body
MEASUREMENT 9 WCDMA Band 5 Head
MEASUREMENT 10 WCDMA Band 5 Body
MEASUREMENT 11 WLAN 5.8G Head
MEASUREMENT 12 WLAN 5.2G Head
MEASUREMENT 13 WLAN 5.2G Body
MEASUREMENT 14 WLAN 5.8G Body
MEASUREMENT 15 WLAN 2.4G Head
MEASUREMENT 16 WLAN 2.4G Body
MEASUREMENT 17 LTE Band 2 Head
MEASUREMENT 18 LTE Band 2 Body
MEASUREMENT 19 LTE Band 4 Head
MEASUREMENT 20 LTE Band 4 Body
MEASUREMENT 21 LTE Band 5 Head
MEASUREMENT 22 LTE Band 5 Body
MEASUREMENT 23 LTE Band 7 Head
MEASUREMENT 24 LTE Band 7 Body
MEASUREMENT 25 LTE Band 12 Head
MEASUREMENT 26 LTE Band 12 Body
MEASUREMENT 27 LTE Band 17 Head
MEASUREMENT 28 LTE Band 17 Body

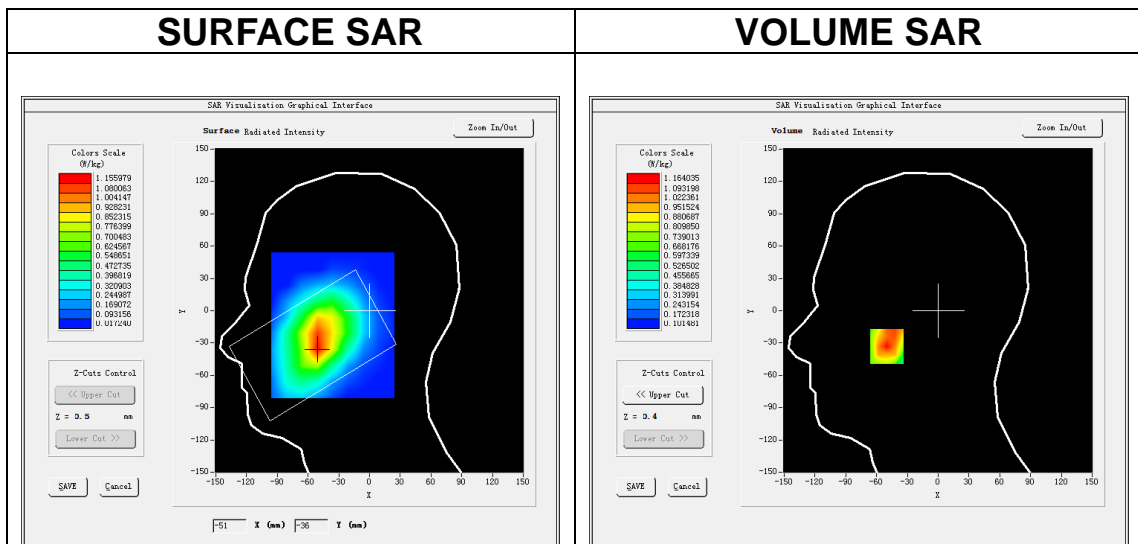
MEASUREMENT 1

A. Experimental conditions.

Area Scan	<u>dx=15mm dy=15mm, h= 5.00 mm</u>
ZoomScan	<u>5x5x7,dx=8mm dy=8mm dz=5mm</u>
Phantom	<u>Left head</u>
Device Position	<u>Cheek</u>
Band	<u>GSM850</u>
Channels	<u>High</u>
Signal	<u>TDMA (Crest factor: 4.0)</u>

B. SAR Measurement Results

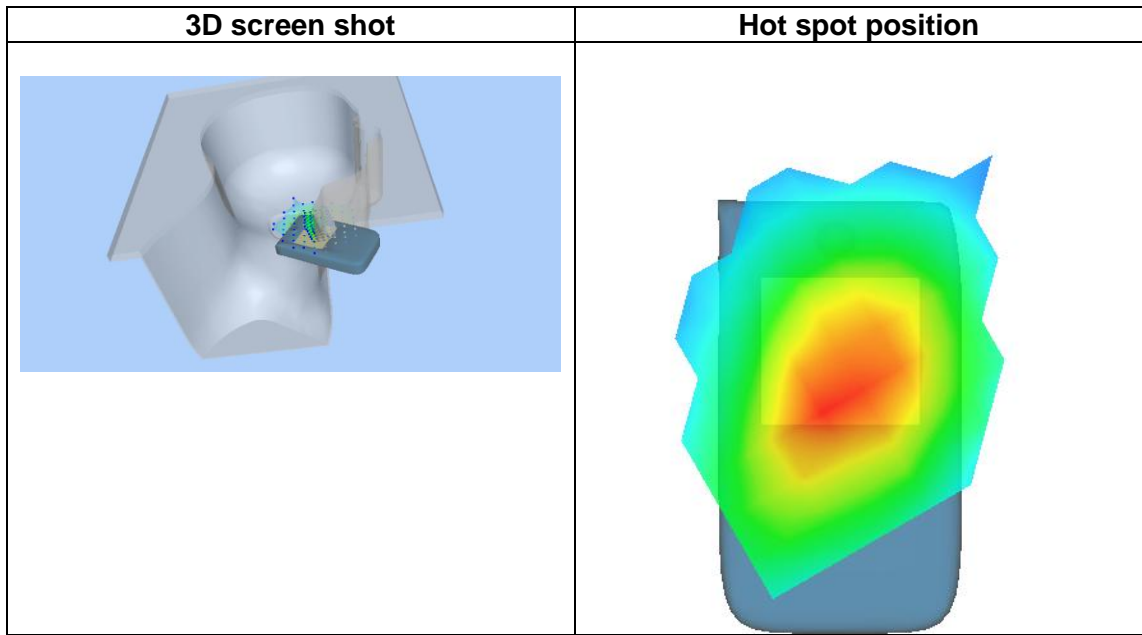
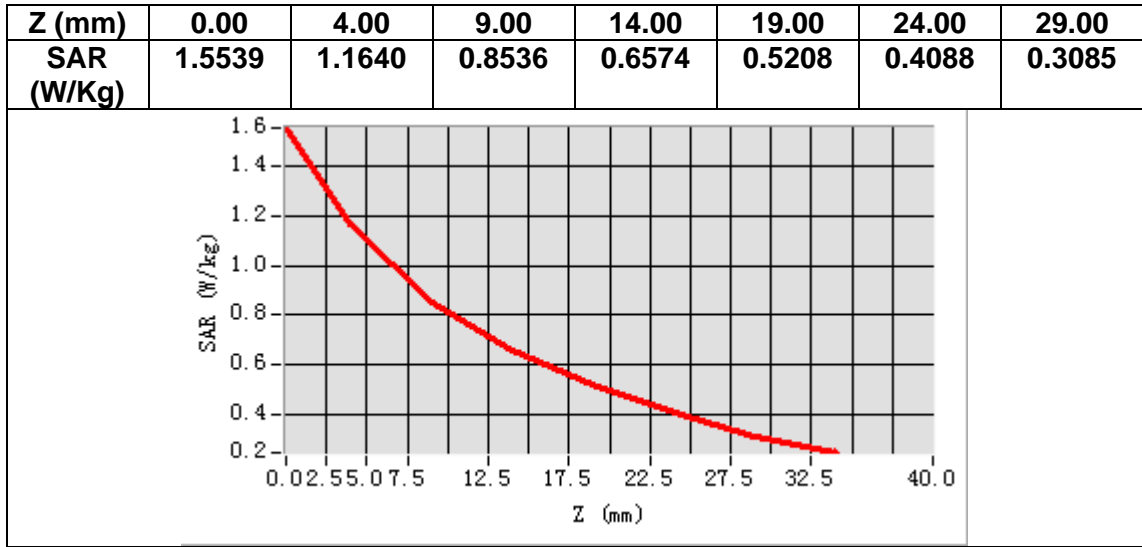
Frequency (MHz)	848.800000
Relative permittivity (real part)	40.284920
Relative permittivity (imaginary part)	20.227961
Conductivity (S/m)	0.953861
Variation (%)	1.020000



Maximum location: X=-50.00, Y=-33.00

SAR Peak: 1.55 W/kg

SAR 10g (W/Kg)	0.812759
SAR 1g (W/Kg)	1.043849



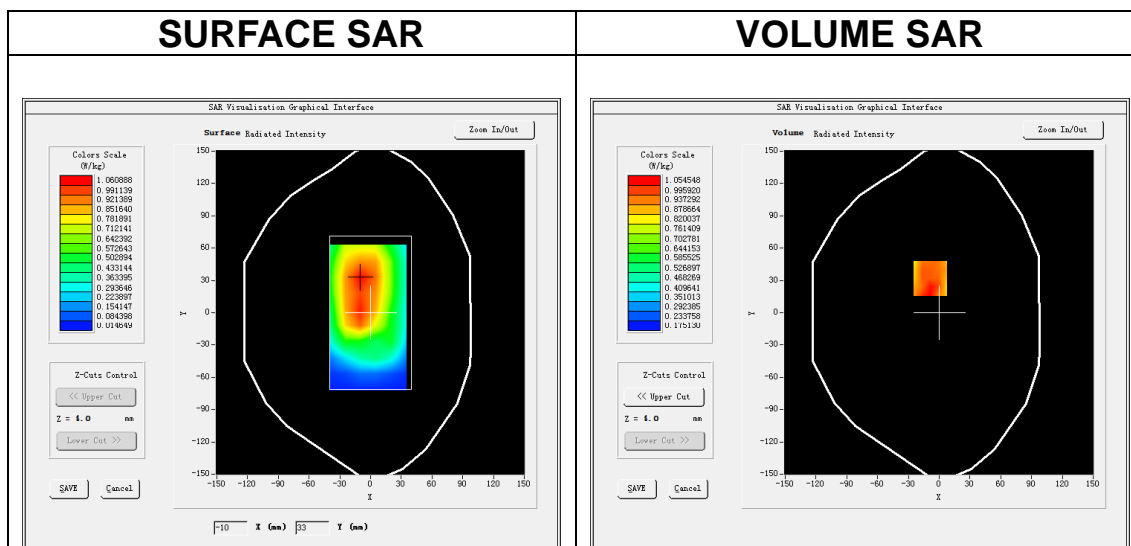
MEASUREMENT 2

A. Experimental conditions.

Area Scan	<u>dx=15mm dy=15mm, h= 5.00 mm</u>
ZoomScan	<u>5x5x7,dx=8mm dy=8mm dz=5mm</u>
Phantom	<u>Validation plane</u>
Device Position	<u>Body</u>
Band	<u>GSM850</u>
Channels	<u>Middle</u>
Signal	<u>TDMA (Crest factor: 4.0)</u>

B. SAR Measurement Results

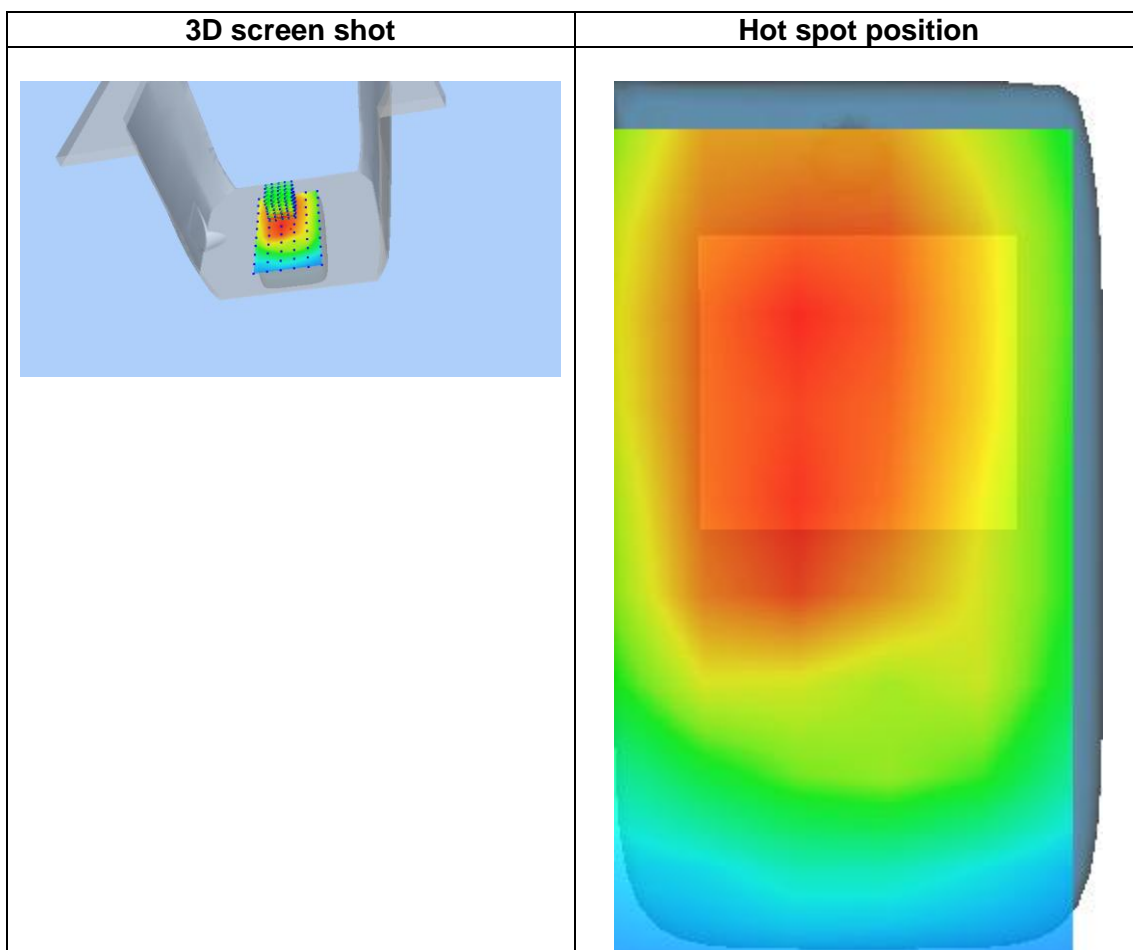
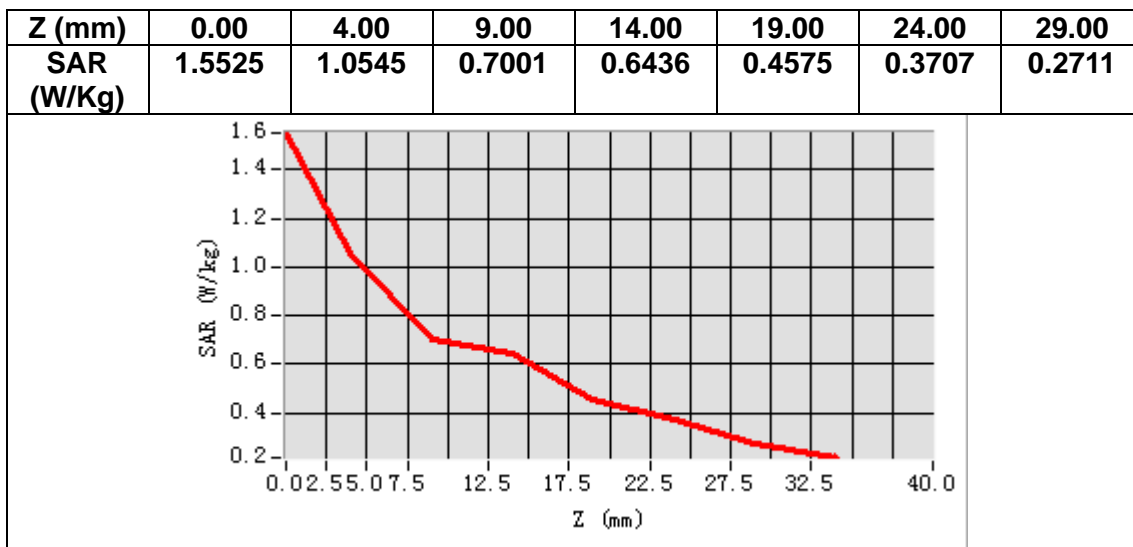
Frequency (MHz)	836.400000
Relative permittivity (real part)	54.379581
Relative permittivity (imaginary part)	21.722740
Conductivity (S/m)	1.009383
Variation (%)	-1.560000



Maximum location: X=-9.00, Y=32.00

SAR Peak: 1.40 W/kg

SAR 10g (W/Kg)	0.759504
SAR 1g (W/Kg)	1.050589



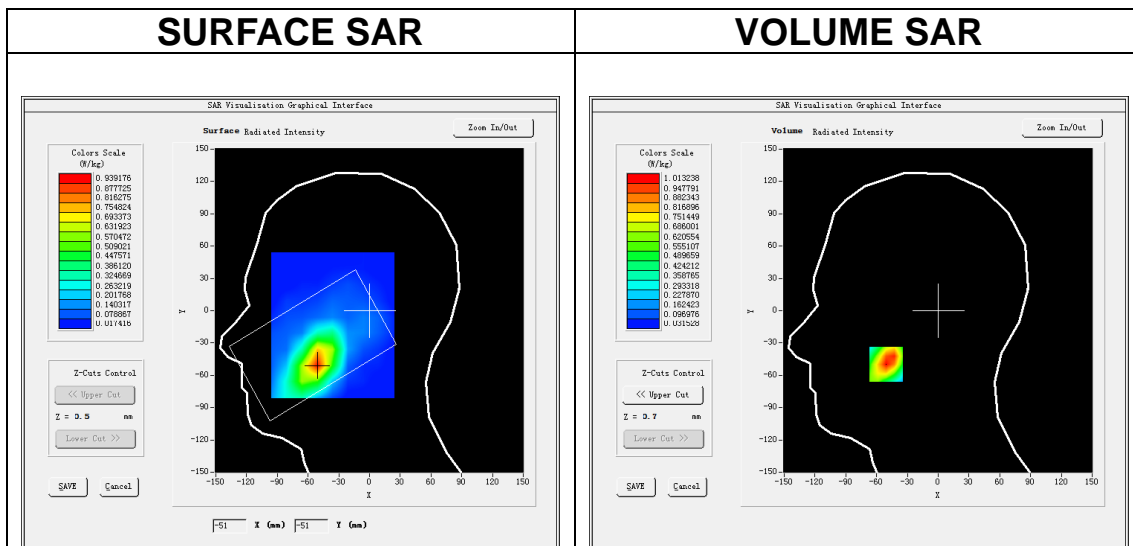
MEASUREMENT 3

A. Experimental conditions.

Area Scan	<u>dx=15mm dy=15mm, h= 5.00 mm</u>
ZoomScan	<u>5x5x7,dx=8mm dy=8mm dz=5mm</u>
Phantom	<u>Left head</u>
Device Position	<u>Cheek</u>
Band	<u>GSM1900</u>
Channels	<u>Middle</u>
Signal	<u>TDMA (Crest factor: 2.0)</u>

B. SAR Measurement Results

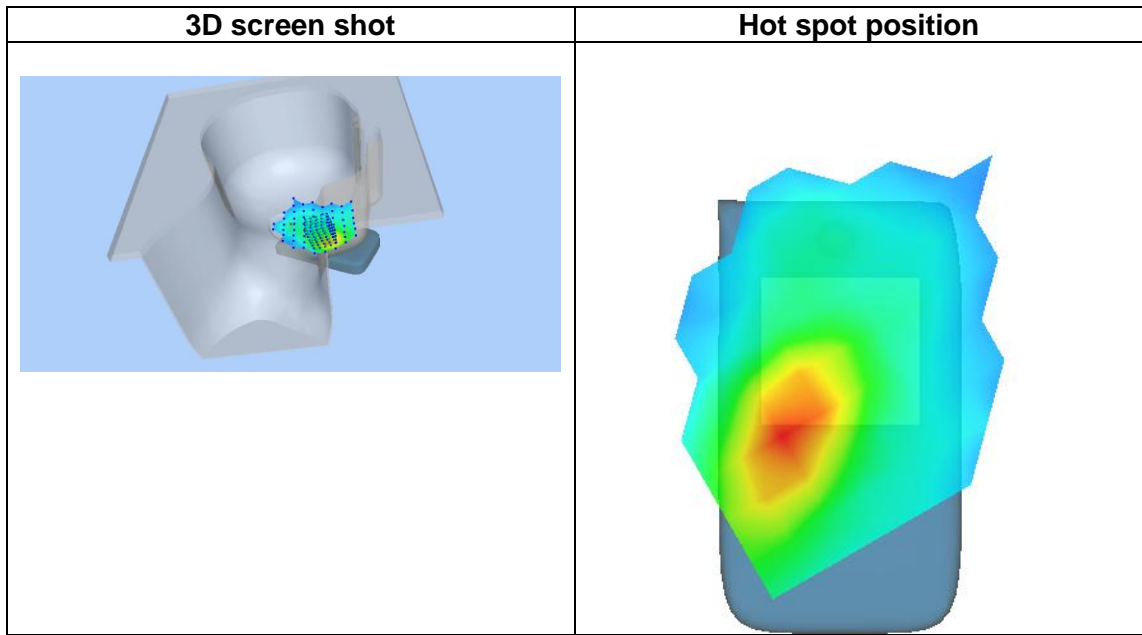
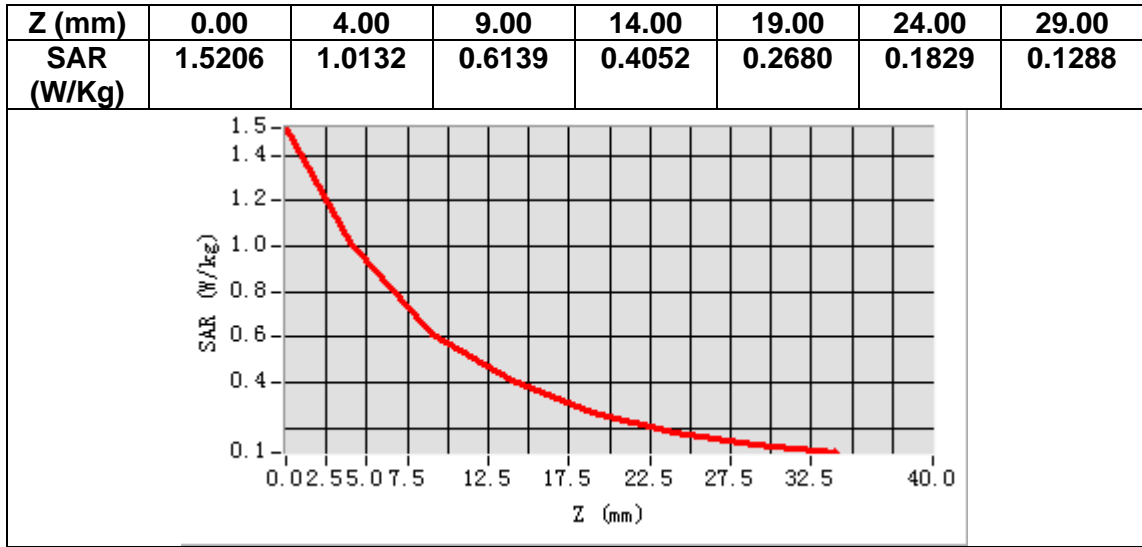
Frequency (MHz)	1880.000000
Relative permittivity (real part)	41.018200
Relative permittivity (imaginary part)	13.744300
Conductivity (S/m)	1.435516
Variation (%)	0.600000



Maximum location: X=-51.00, Y=-50.00

SAR Peak: 1.54 W/kg

SAR 10g (W/Kg)	0.548766
SAR 1g (W/Kg)	0.956800



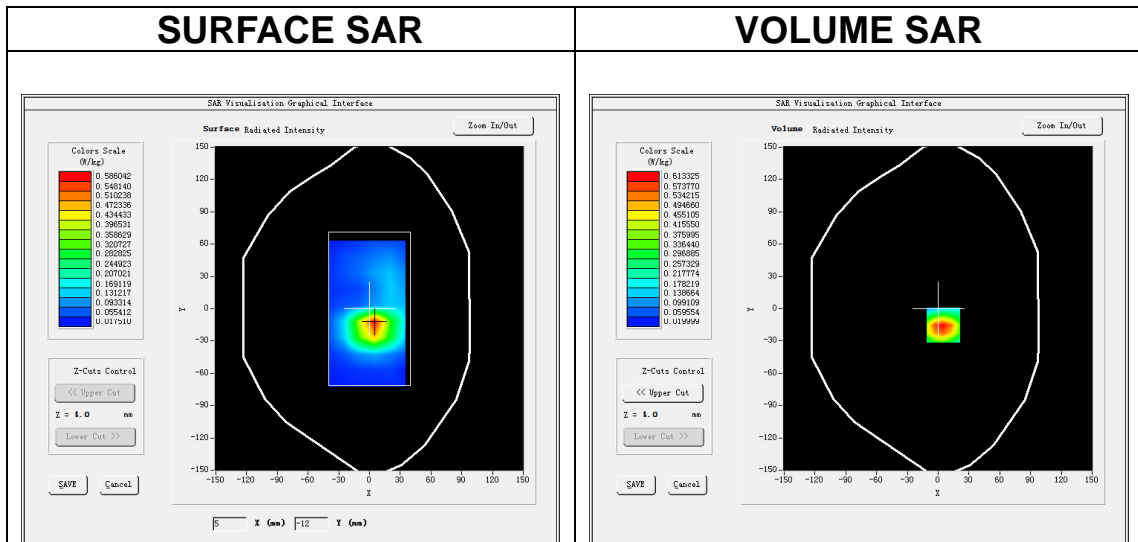
MEASUREMENT 4

A. Experimental conditions.

Area Scan	<u>dx=15mm dy=15mm, h= 5.00 mm</u>
ZoomScan	<u>5x5x7,dx=8mm dy=8mm dz=5mm</u>
Phantom	<u>Validation plane</u>
Device Position	<u>Body</u>
Band	<u>GSM1900</u>
Channels	<u>Middle</u>
Signal	<u>TDMA (Crest factor: 2.0)</u>

B. SAR Measurement Results

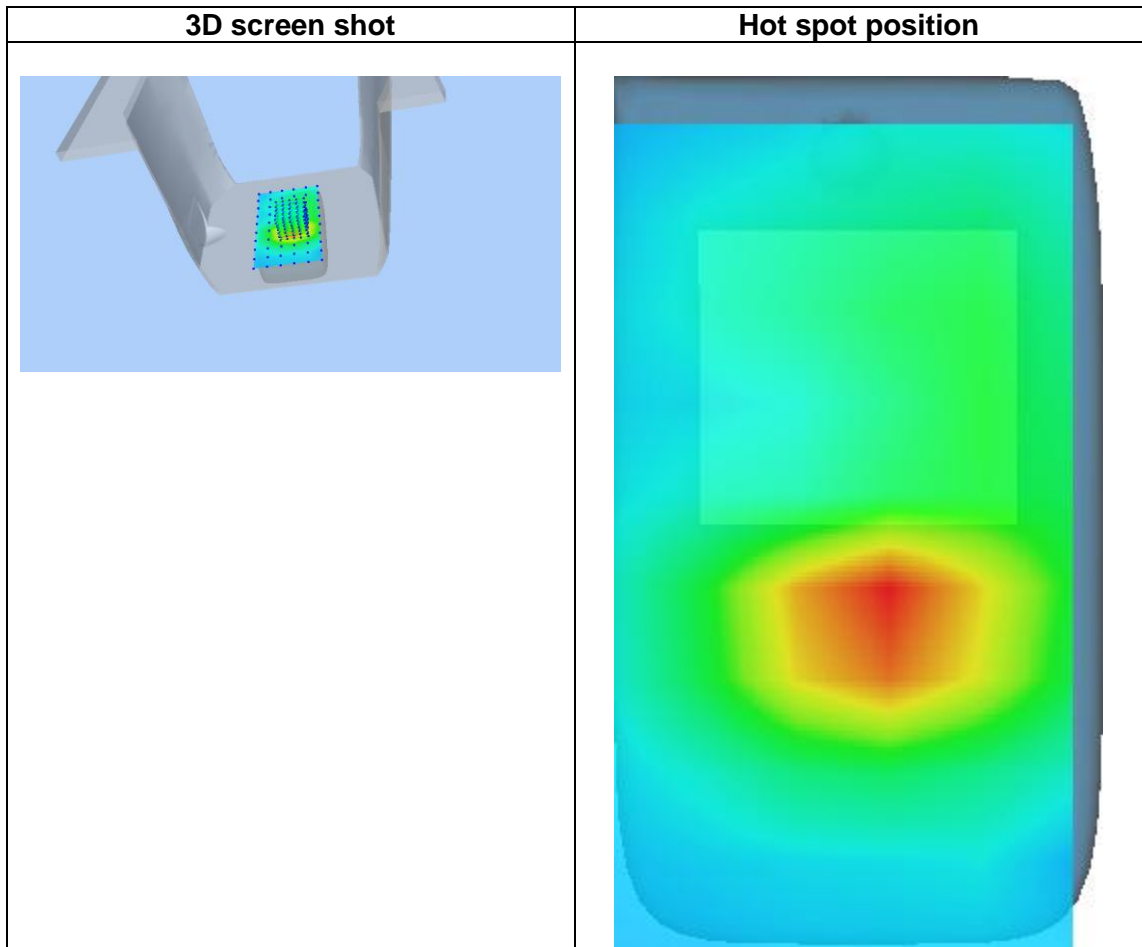
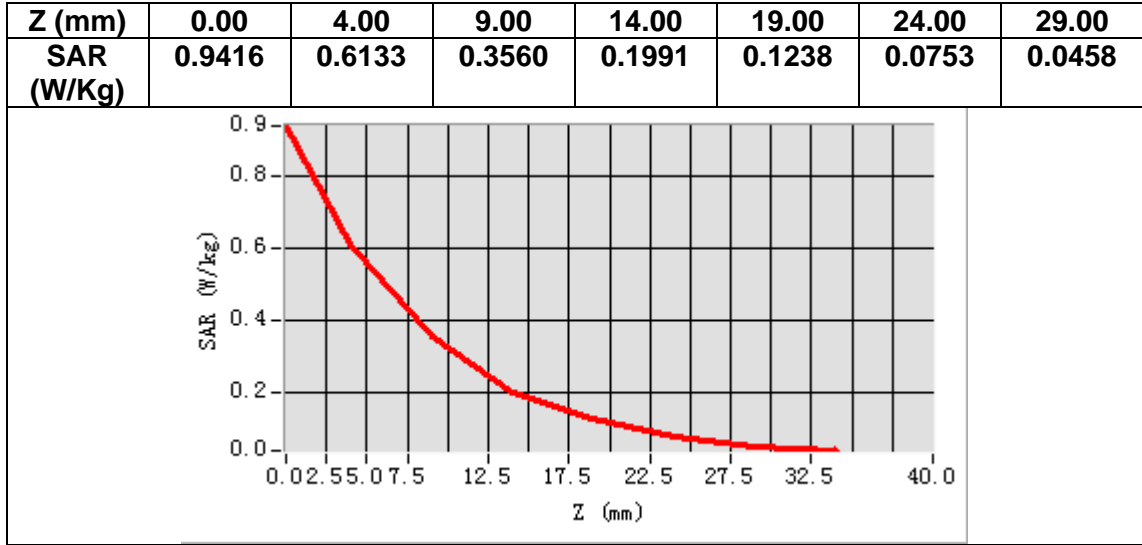
Frequency (MHz)	1880.000000
Relative permittivity (real part)	52.578899
Relative permittivity (imaginary part)	14.937700
Conductivity (S/m)	1.560160
Variation (%)	0.230000



Maximum location: X=5.00, Y=-15.00

SAR Peak: 1.03 W/kg

SAR 10g (W/Kg)	0.311658
SAR 1g (W/Kg)	0.605025



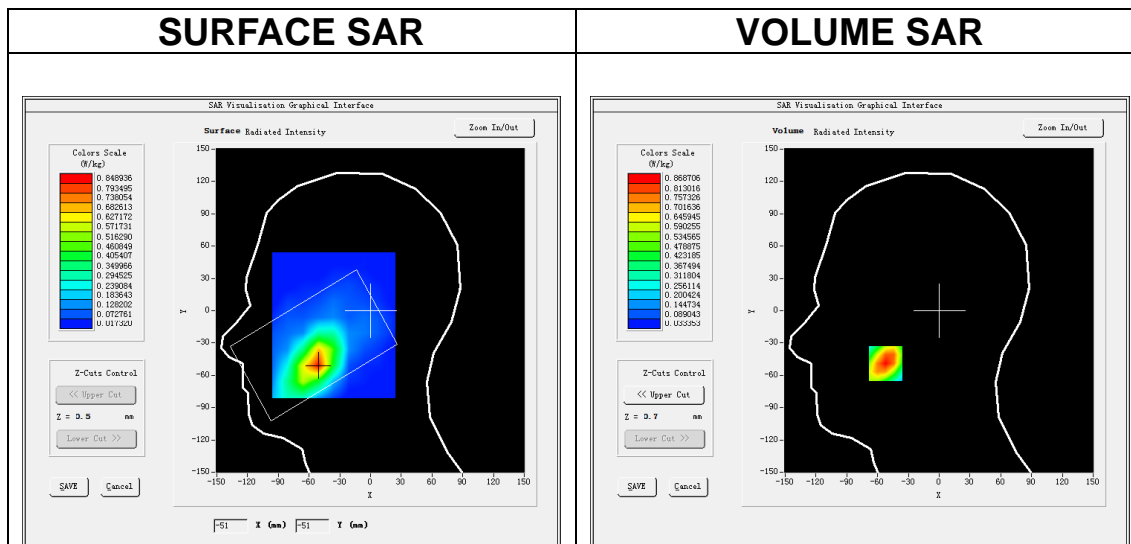
MEASUREMENT 5

A. Experimental conditions.

Area Scan	<u>dx=15mm dy=15mm, h= 5.00 mm</u>
ZoomScan	<u>5x5x7,dx=8mm dy=8mm dz=5mm</u>
Phantom	<u>Left head</u>
Device Position	<u>Cheek</u>
Band	<u>Band2_WCDMA1900</u>
Channels	<u>Middle</u>
Signal	<u>WCDMA (Crest factor: 1.0)</u>

B. SAR Measurement Results

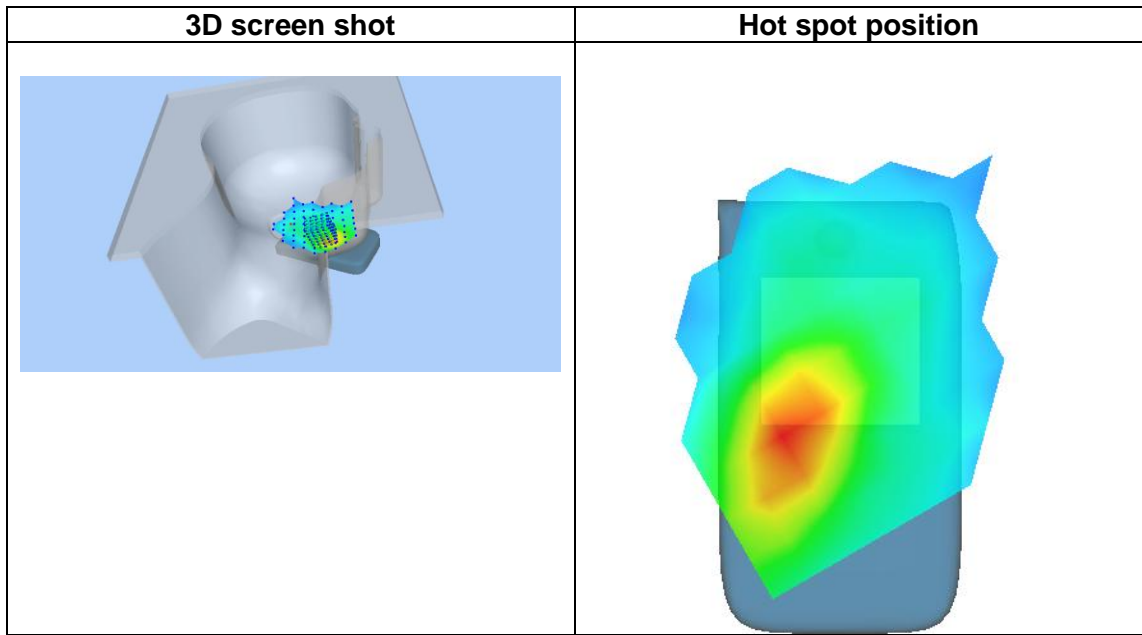
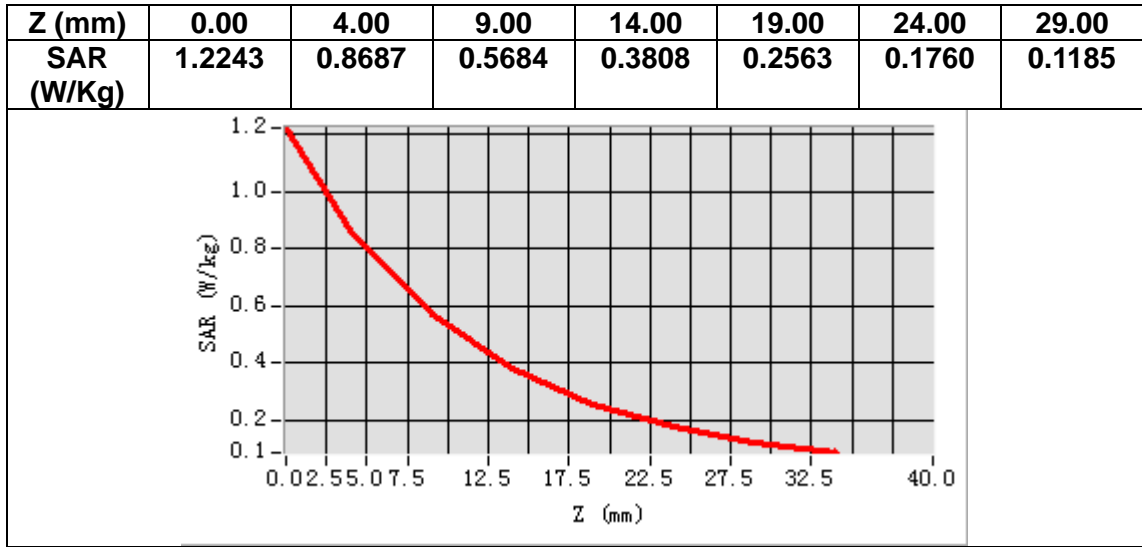
Frequency (MHz)	1880.000000
Relative permittivity (real part)	41.018200
Relative permittivity (imaginary part)	13.744300
Conductivity (S/m)	1.435516
Variation (%)	-1.680000



Maximum location: X=-52.00, Y=-49.00

SAR Peak: 1.23 W/kg

SAR 10g (W/Kg)	0.490005
SAR 1g (W/Kg)	0.830315



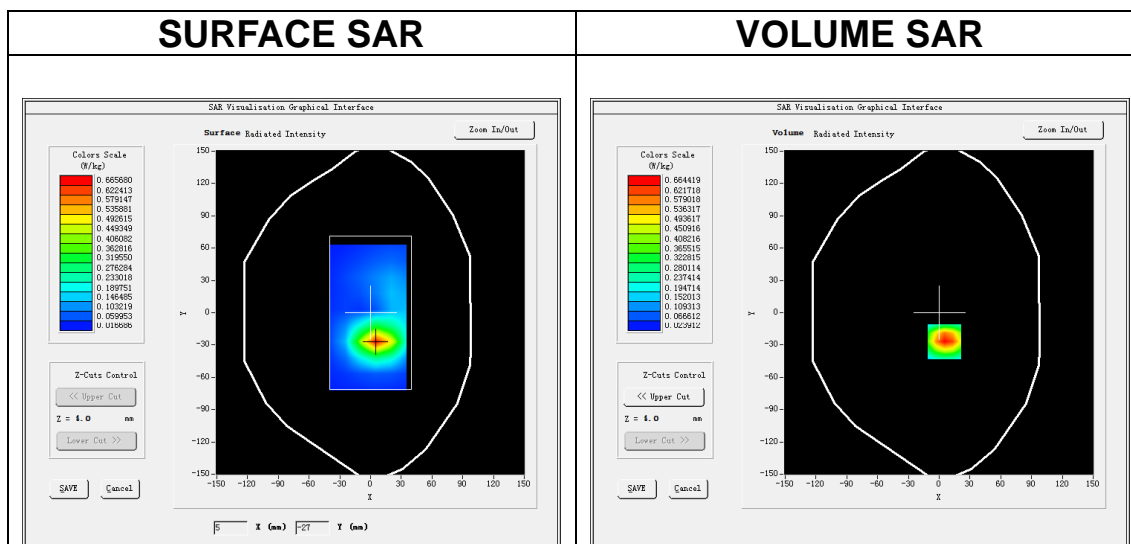
MEASUREMENT 6

A. Experimental conditions.

Area Scan	<u>dx=15mm dy=15mm, h= 5.00 mm</u>
ZoomScan	<u>5x5x7,dx=8mm dy=8mm dz=5mm</u>
Phantom	<u>Validation plane</u>
Device Position	<u>Body</u>
Band	<u>Band2 WCDMA1900</u>
Channels	<u>Middle</u>
Signal	<u>WCDMA (Crest factor: 1.0)</u>

B. SAR Measurement Results

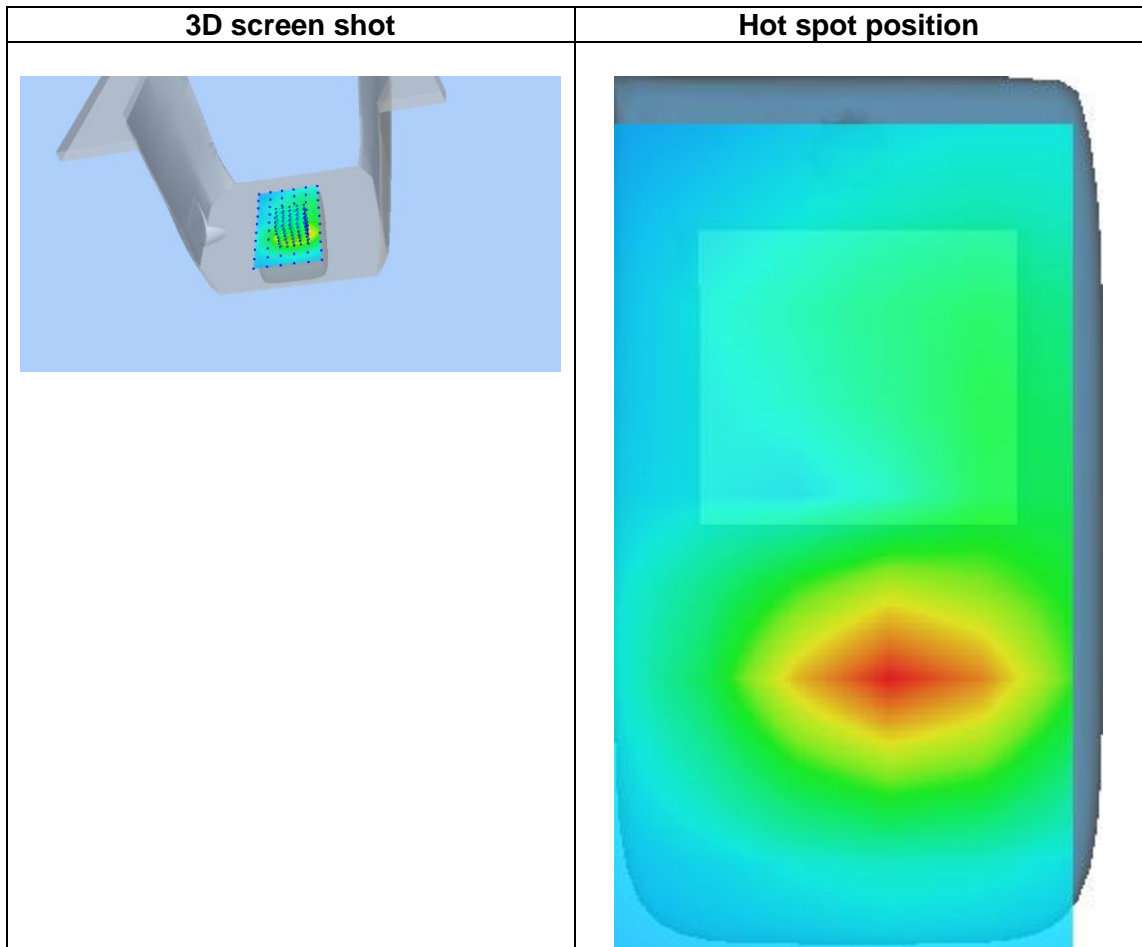
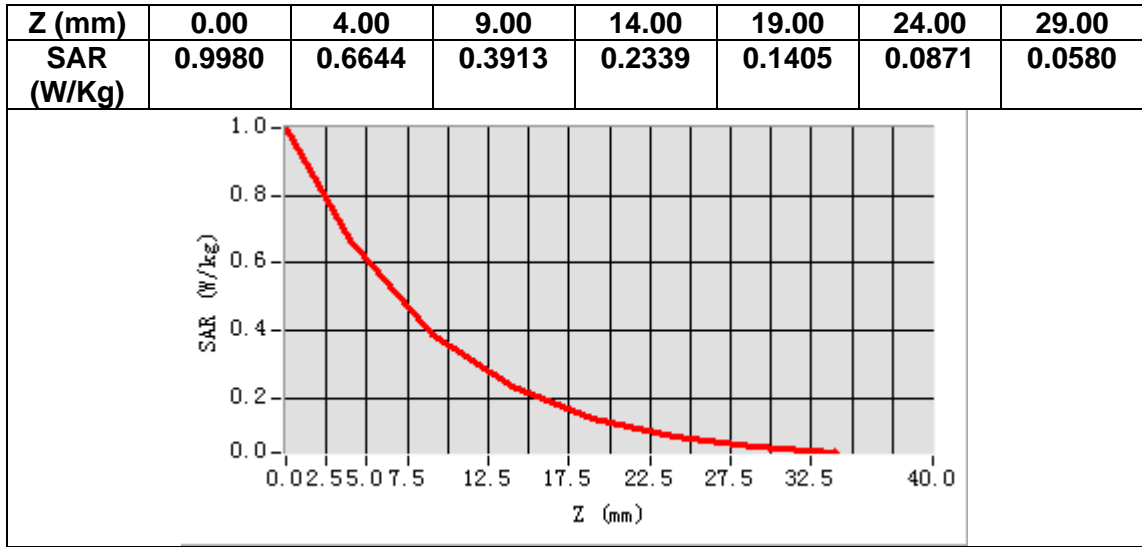
Frequency (MHz)	1880.000000
Relative permittivity (real part)	52.648899
Relative permittivity (imaginary part)	14.987700
Conductivity (S/m)	1.565382
Variation (%)	-0.050000



Maximum location: X=5.00, Y=-27.00

SAR Peak: 1.04 W/kg

SAR 10g (W/Kg)	0.341522
SAR 1g (W/Kg)	0.644242



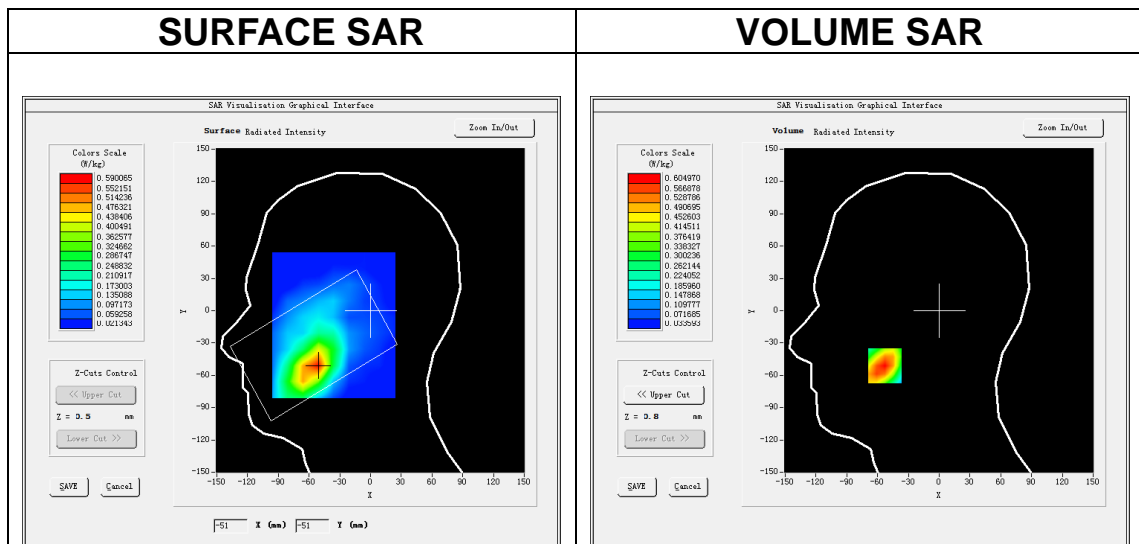
MEASUREMENT 7

A. Experimental conditions.

<u>Area Scan</u>	<u>dx=15mm dy=15mm, h= 5.00 mm</u>
<u>ZoomScan</u>	<u>5x5x7,dx=8mm dy=8mm dz=5mm</u>
<u>Phantom</u>	<u>Left head</u>
<u>Device Position</u>	<u>Cheek</u>
<u>Band</u>	<u>Band4 WCDMA1700</u>
<u>Channels</u>	<u>Middle</u>
<u>Signal</u>	<u>WCDMA (Crest factor: 1.0)</u>

B. SAR Measurement Results

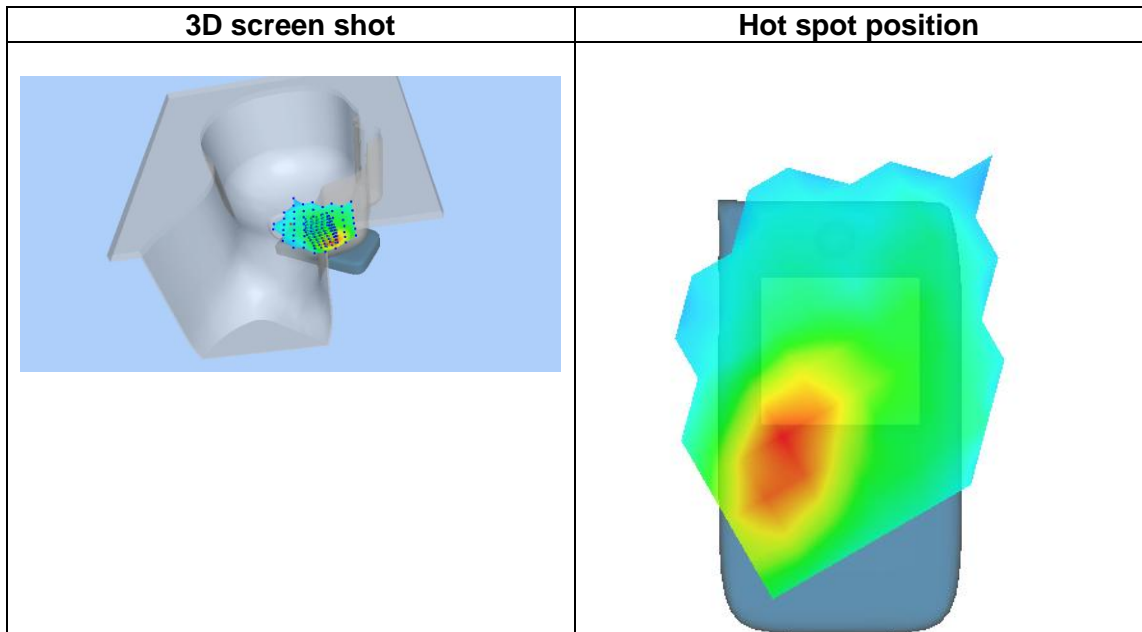
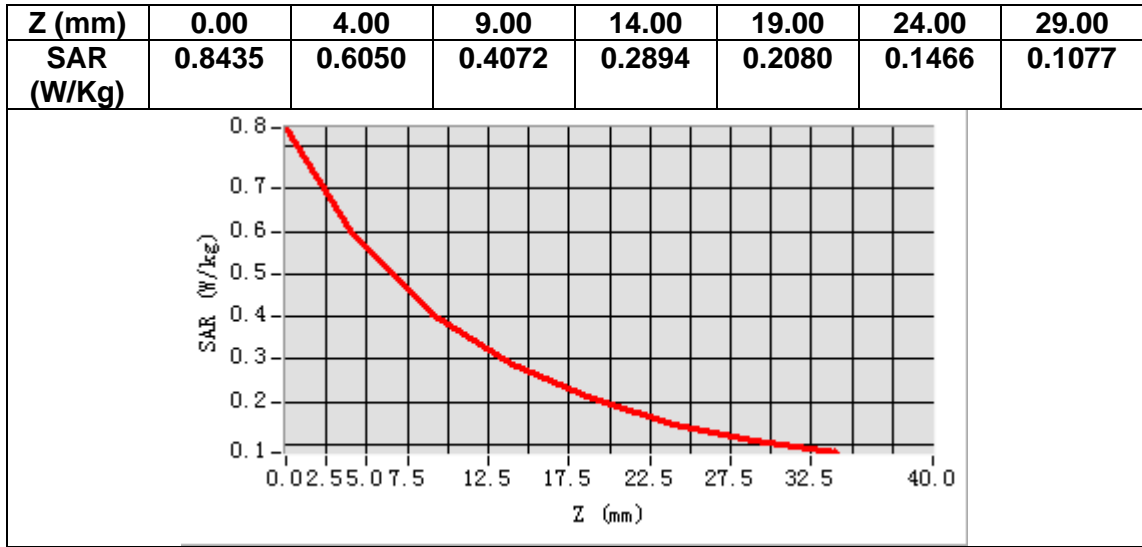
Frequency (MHz)	1732.600000
Relative permittivity (real part)	38.937389
Relative permittivity (imaginary part)	14.095742
Conductivity (S/m)	1.356324
Variation (%)	-1.640000



Maximum location: X=-53.00, Y=-51.00

SAR Peak: 0.84 W/kg

SAR 10g (W/Kg)	0.362523
SAR 1g (W/Kg)	0.579524



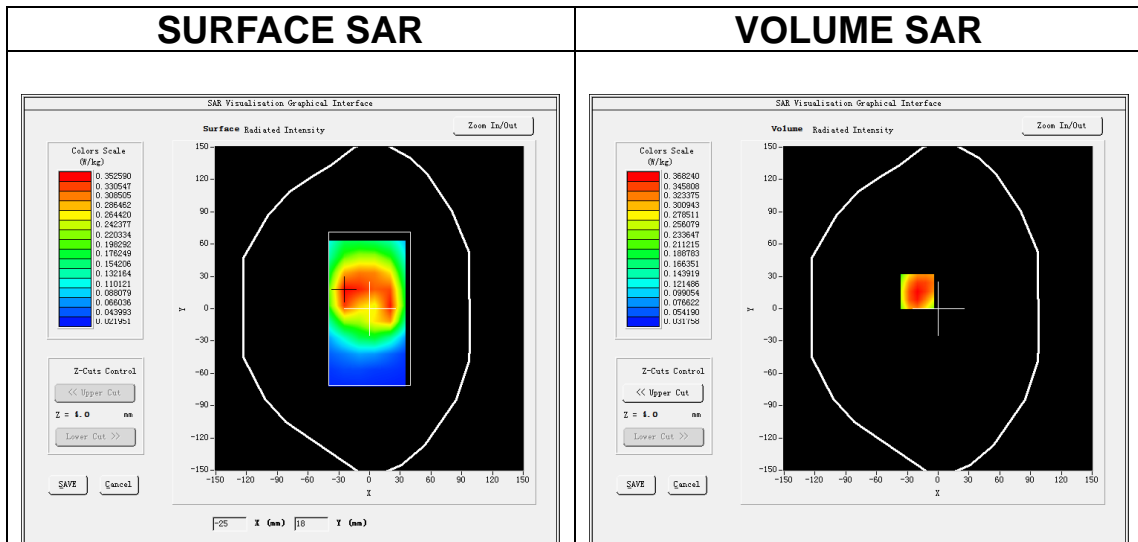
MEASUREMENT 8

A. Experimental conditions.

Area Scan	<u>dx=15mm dy=15mm, h= 5.00 mm</u>
ZoomScan	<u>5x5x7,dx=8mm dy=8mm dz=5mm</u>
Phantom	<u>Validation plane</u>
Device Position	<u>Body</u>
Band	<u>Band4 WCDMA1700</u>
Channels	<u>Middle</u>
Signal	<u>WCDMA (Crest factor: 1.0)</u>

B. SAR Measurement Results

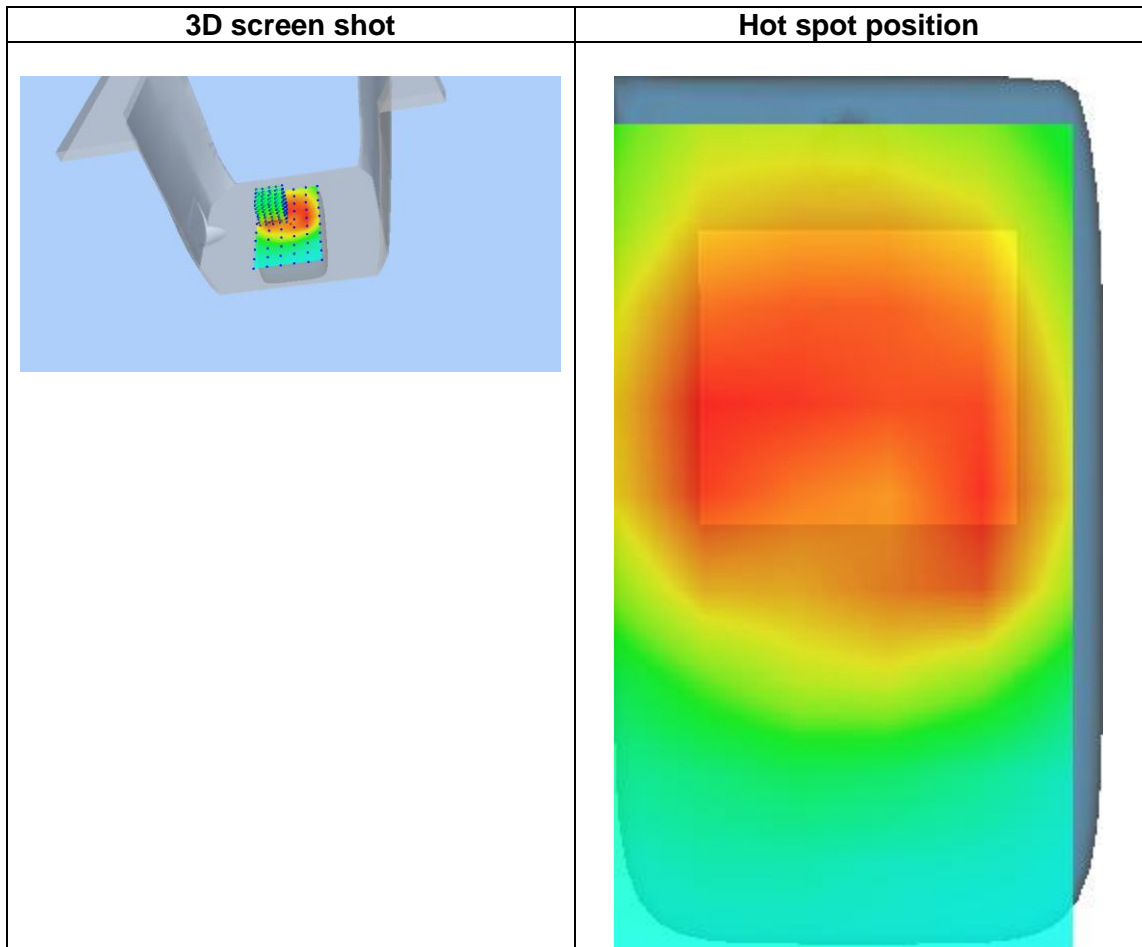
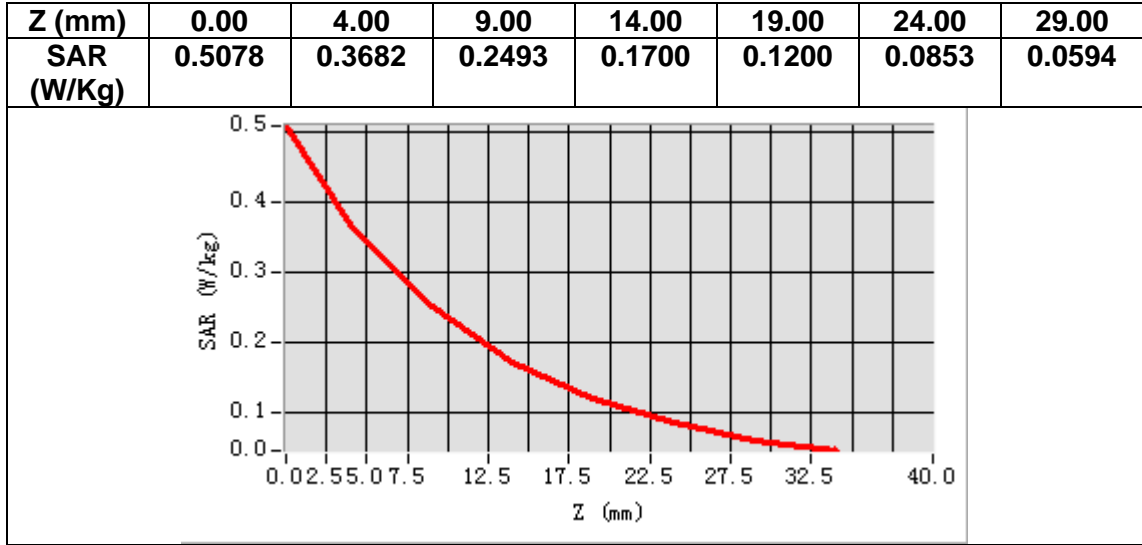
Frequency (MHz)	1732.600000
Relative permittivity (real part)	53.636166
Relative permittivity (imaginary part)	15.671370
Conductivity (S/m)	1.507934
Variation (%)	0.510000



Maximum location: X=-20.00, Y=16.00

SAR Peak: 0.51 W/kg

SAR 10g (W/Kg)	0.233051
SAR 1g (W/Kg)	0.360076



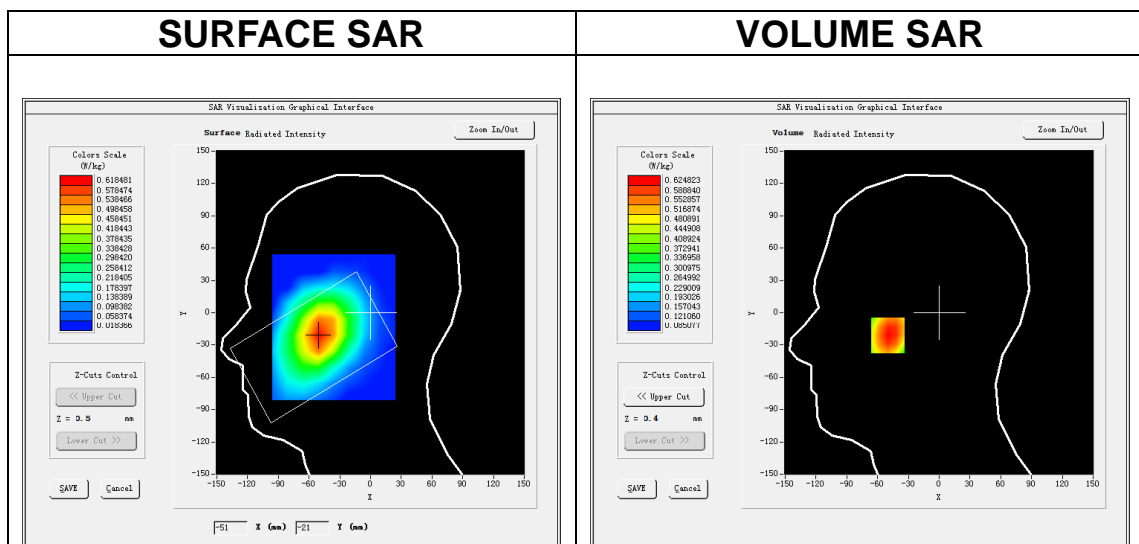
MEASUREMENT 9

A. Experimental conditions.

Area Scan	<u>dx=15mm dy=15mm, h= 5.00 mm</u>
ZoomScan	<u>5x5x7,dx=8mm dy=8mm dz=5mm</u>
Phantom	<u>Left head</u>
Device Position	<u>Cheek</u>
Band	<u>Band5 WCDMA850</u>
Channels	<u>Middle</u>
Signal	<u>WCDMA (Crest factor: 1.0)</u>

B. SAR Measurement Results

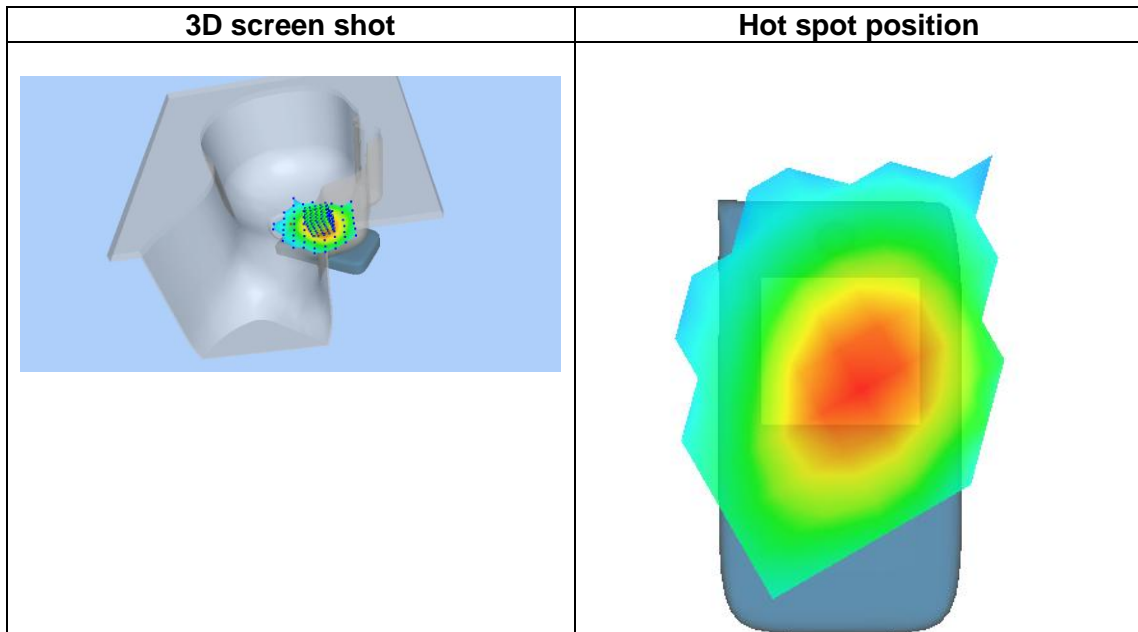
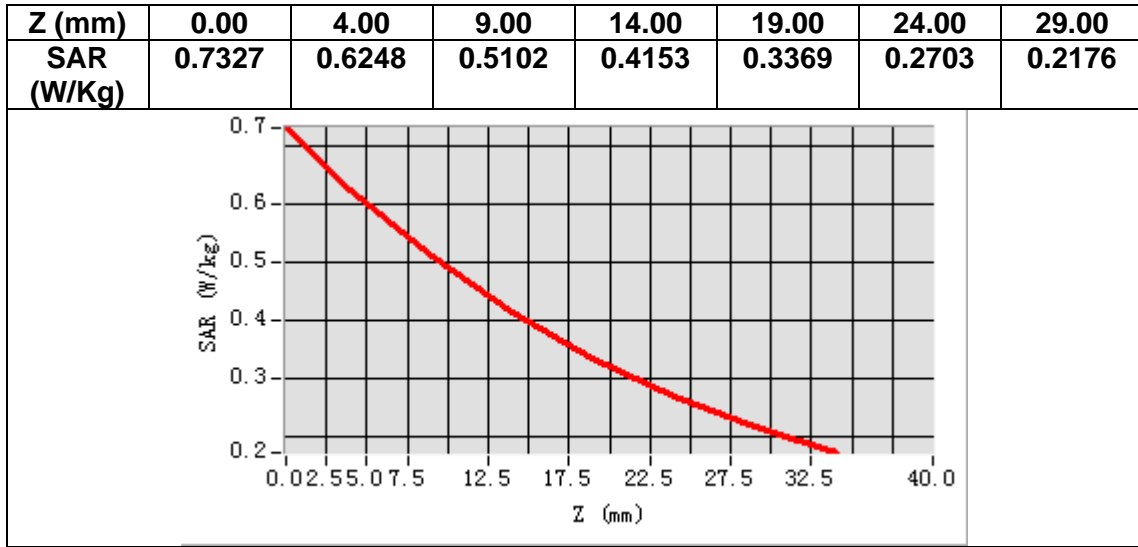
Frequency (MHz)	836.400000
Relative permittivity (real part)	40.440960
Relative permittivity (imaginary part)	20.181540
Conductivity (S/m)	0.937769
Variation (%)	-0.120000



Maximum location: X=-50.00, Y=-21.00

SAR Peak: 0.75 W/kg

SAR 10g (W/Kg)	0.475073
SAR 1g (W/Kg)	0.629133



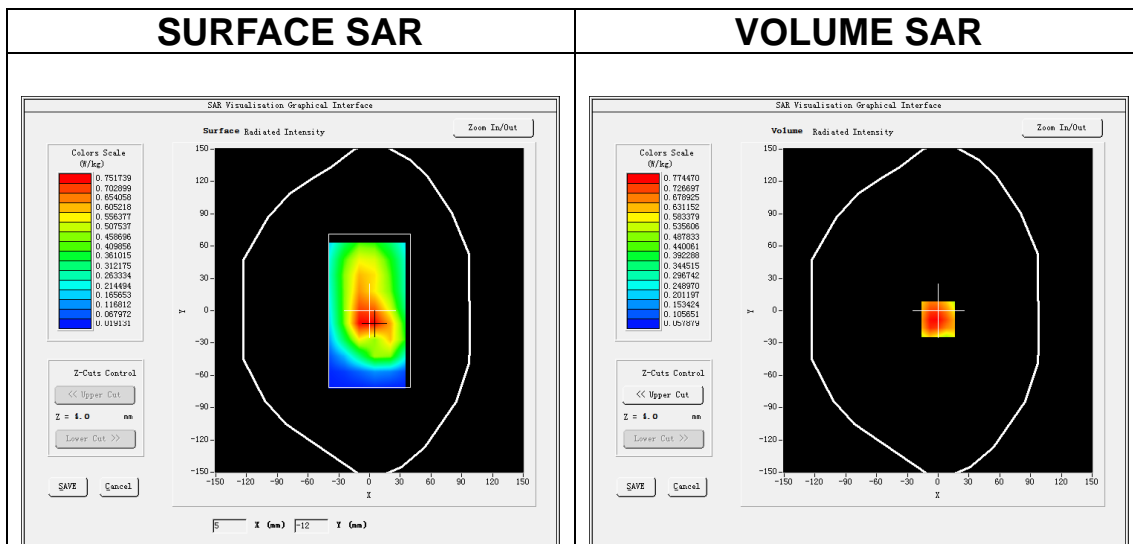
MEASUREMENT 10

A. Experimental conditions.

Area Scan	<u>dx=15mm dy=15mm, h= 5.00 mm</u>
ZoomScan	<u>5x5x7,dx=8mm dy=8mm dz=5mm</u>
Phantom	<u>Validation plane</u>
Device Position	<u>Body</u>
Band	<u>Band5 WCDMA850</u>
Channels	<u>Middle</u>
Signal	<u>WCDMA (Crest factor: 1.0)</u>

B. SAR Measurement Results

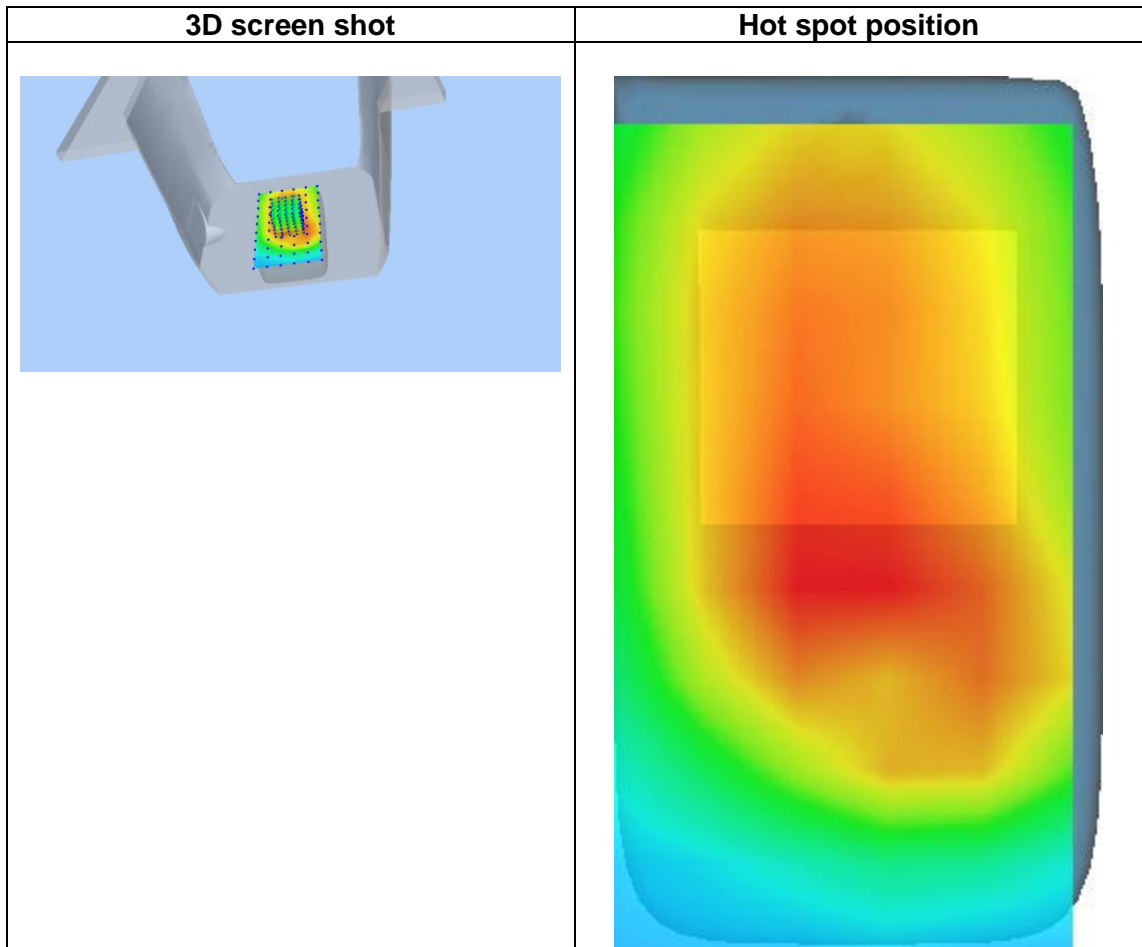
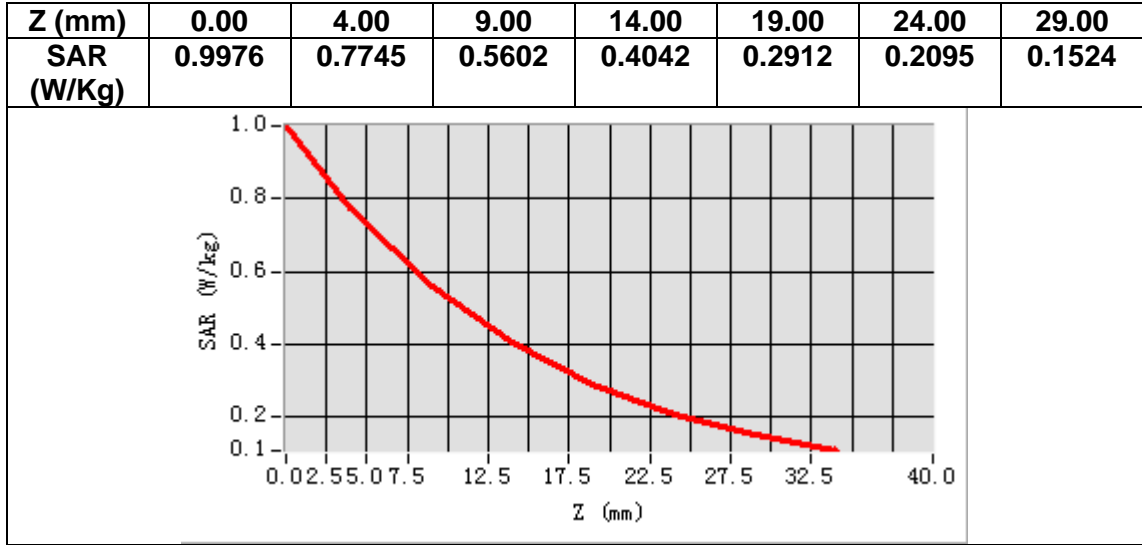
Frequency (MHz)	836.400000
Relative permittivity (real part)	54.379581
Relative permittivity (imaginary part)	21.722740
Conductivity (S/m)	1.009383
Variation (%)	-0.050000



Maximum location: X=0.00, Y=-8.00

SAR Peak: 1.03 W/kg

SAR 10g (W/Kg)	0.539434
SAR 1g (W/Kg)	0.780882



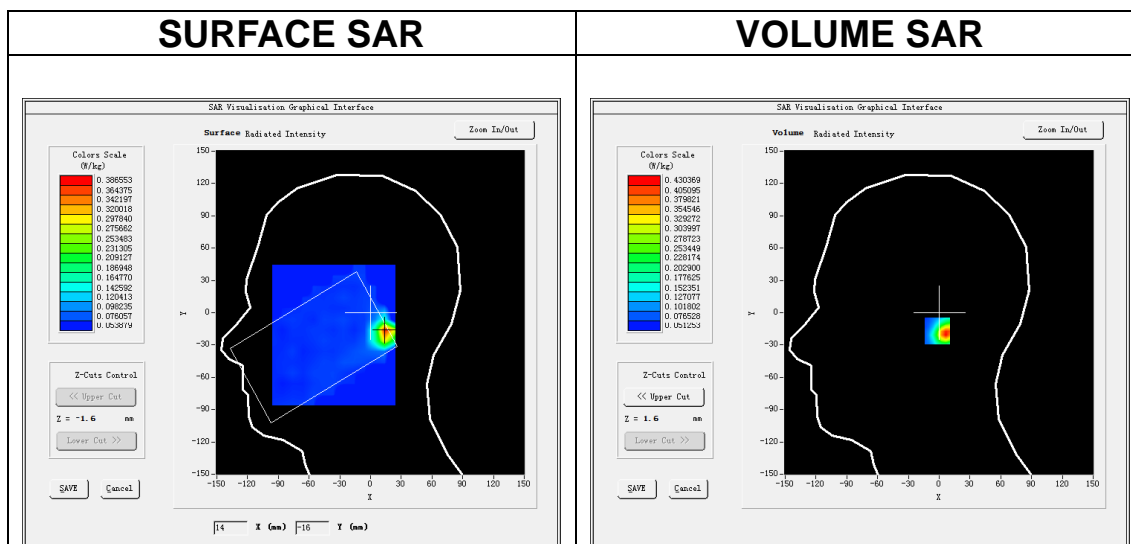
MEASUREMENT 11

A. Experimental conditions.

Area Scan	<u>dx=10mm dy=10mm, h= 2.00 mm</u>
ZoomScan	<u>7x7x12,dx=4mm dy=4mm dz=2mm</u>
Phantom	<u>Right head</u>
Device Position	<u>Cheek</u>
Band	<u>IEEE 802.11a U-NII</u>
Channels	<u>Middle</u>
Signal	<u>IEEE802.11a (Crest factor: 1.0)</u>

B. SAR Measurement Results

Frequency (MHz)	5745.000000
Relative permittivity (real part)	34.869059
Relative permittivity (imaginary part)	16.119066
Conductivity (S/m)	5.144669
Variation (%)	2.630000

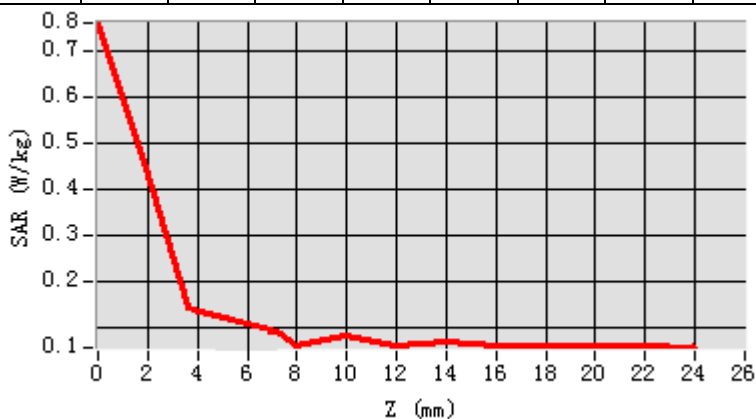


Maximum location: X=7.00, Y=-17.00

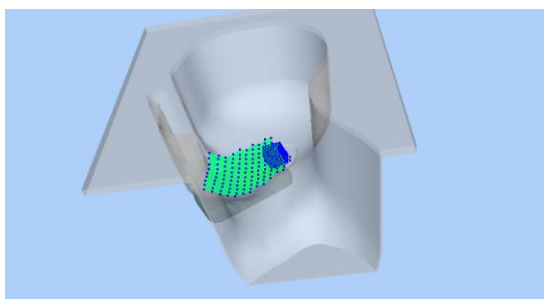
SAR Peak: 1.13 W/kg

SAR 10g (W/Kg)	0.154997
SAR 1g (W/Kg)	0.342162

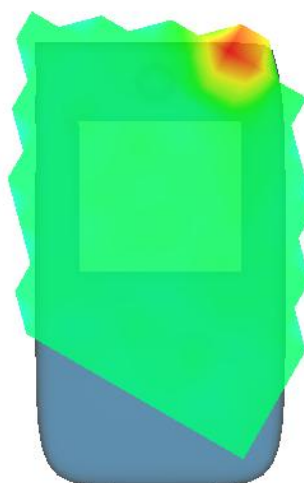
Z (m)	0.00	2.00	4.00	6.00	8.00	10.0	12.0	14.0	16.0	18.0	20.0	22.0
SAR (W/Kg)	0.7598	0.4304	0.0710	0.1398	0.0587	0.0803	0.0580	0.0678	0.0588	0.0605	0.0602	0.0593



3D screen shot



Hot spot position



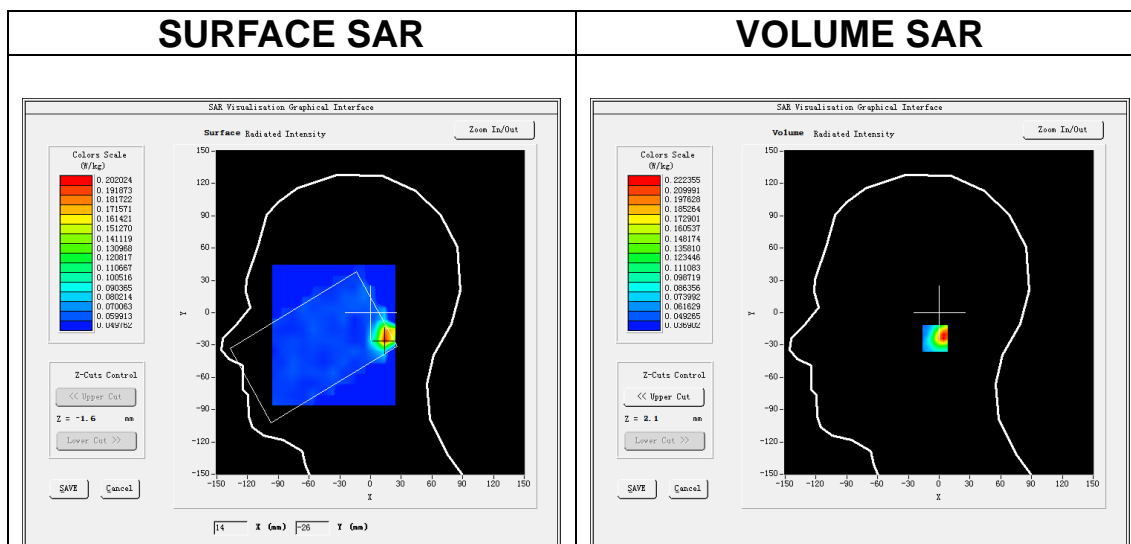
MEASUREMENT 12

A. Experimental conditions.

Area Scan	<u>dx=10mm dy=10mm, h= 2.00 mm</u>
ZoomScan	<u>7x7x12,dx=4mm dy=4mm dz=2mm</u>
Phantom	<u>Right head</u>
Device Position	<u>Cheek</u>
Band	<u>IEEE 802.11a U-NII</u>
Channels	<u>Middle</u>
Signal	<u>IEEE802.11a (Crest factor: 1.0)</u>

B. SAR Measurement Results

Frequency (MHz)	5200.000000
Relative permittivity (real part)	35.832981
Relative permittivity (imaginary part)	16.041618
Conductivity (S/m)	4.634246
Variation (%)	-0.470000

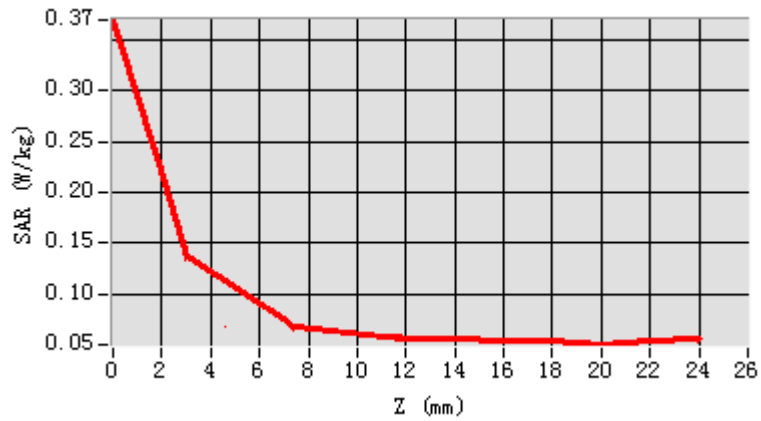


Maximum location: X=7.00, Y=-24.00

SAR Peak: 0.52 W/kg

SAR 10g (W/Kg)	0.100497
SAR 1g (W/Kg)	0.216975

Z (m m)	0.00	2.00	4.00	6.00	8.00	10.0	12.0	14.0	16.0	18.0	20.0	22.0
SAR (W/Kg)	0.3690	0.2224	0.1094	0.0988	0.0585	0.0669	0.0561	0.0560	0.0552	0.0540	0.0506	0.0500



3D screen shot	Hot spot position

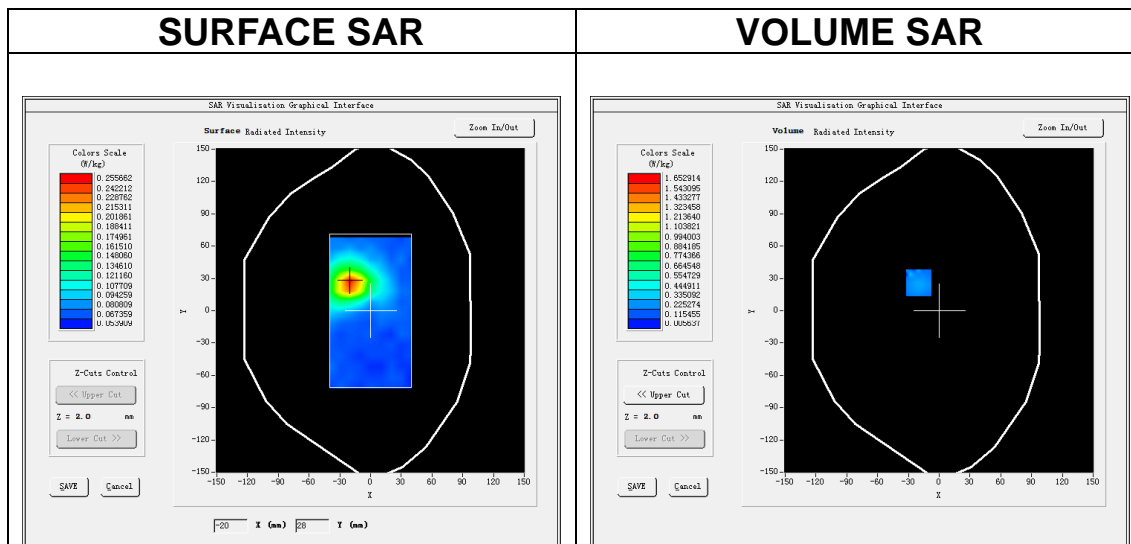
MEASUREMENT 13

A. Experimental conditions.

<u>Area Scan</u>	<u>dx=10mm dy=10mm, h= 2.00 mm</u>
<u>ZoomScan</u>	<u>7x7x12,dx=4mm dy=4mm dz=2mm</u>
<u>Phantom</u>	<u>Validation plane</u>
<u>Device Position</u>	<u>Body</u>
<u>Band</u>	<u>IEEE 802.11a U-NII</u>
<u>Channels</u>	<u>Middle</u>
<u>Signal</u>	<u>IEEE802.11a (Crest factor: 1.0)</u>

B. SAR Measurement Results

Frequency (MHz)	5200.000000
Relative permittivity (real part)	49.659538
Relative permittivity (imaginary part)	18.295509
Conductivity (S/m)	5.285369
Variation (%)	-3.930000

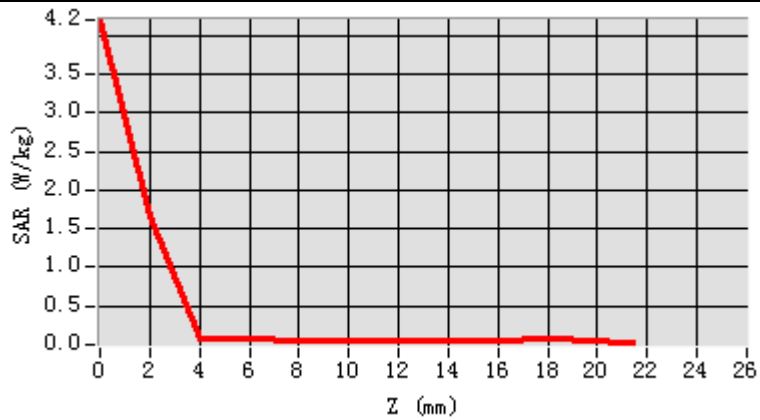


Maximum location: X=-20.00, Y=26.00

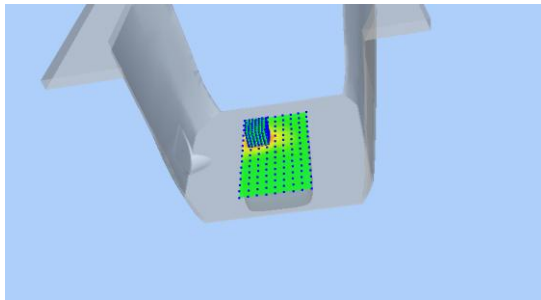
SAR Peak: 0.64 W/kg

SAR 10g (W/Kg)	0.111205
SAR 1g (W/Kg)	0.167448

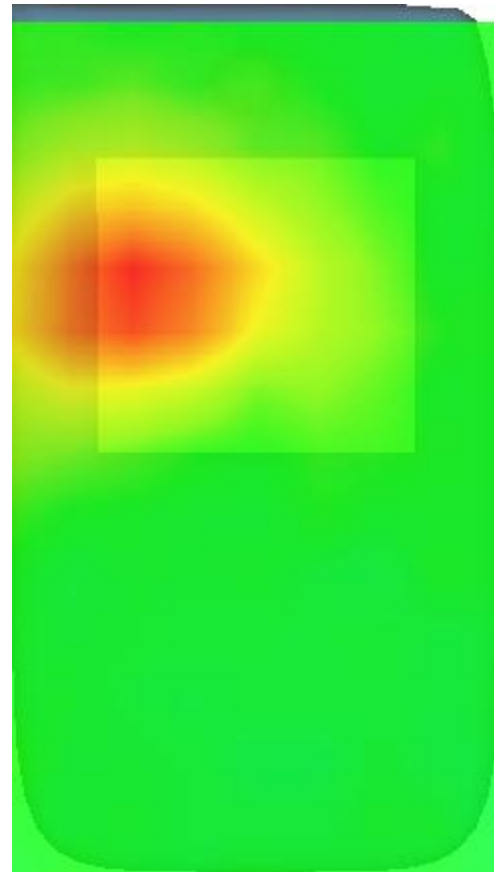
Z (m m)	0.00	2.00	4.00	6.00	8.00	10.0	12.0	14.0	16.0	18.0	20.0	22.0
SAR (W/Kg)	4.2073	1.6529	0.0702	0.0660	0.0645	0.0608	0.0629	0.0598	0.0643	0.0655	0.0634	0.0000



3D screen shot



Hot spot position



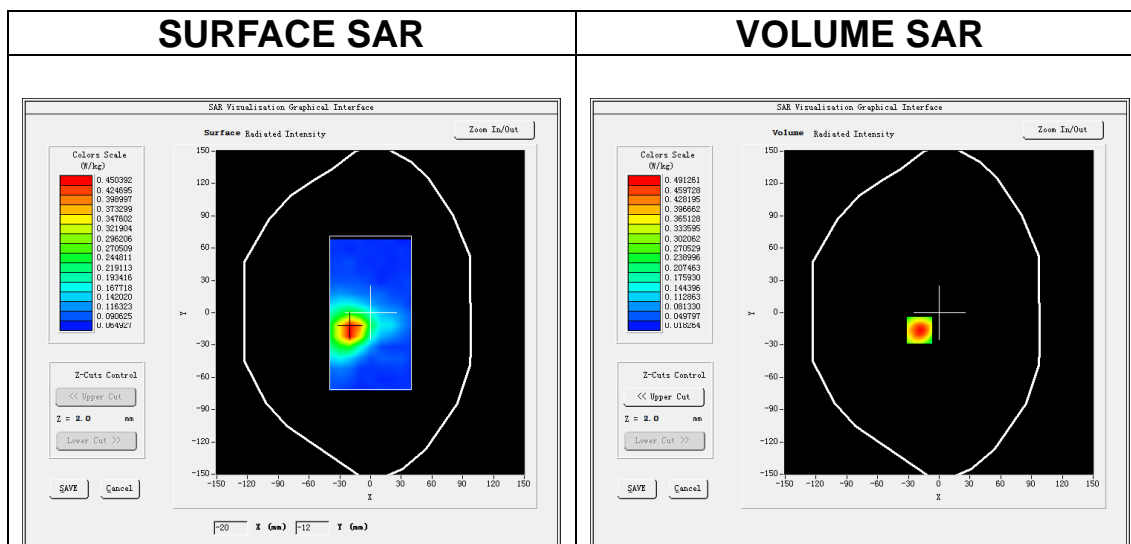
MEASUREMENT 14

A. Experimental conditions.

<u>Area Scan</u>	<u>dx=10mm dy=10mm, h= 2.00 mm</u>
<u>ZoomScan</u>	<u>7x7x12,dx=4mm dy=4mm dz=2mm</u>
<u>Phantom</u>	<u>Validation plane</u>
<u>Device Position</u>	<u>Body</u>
<u>Band</u>	<u>IEEE 802.11a U-NII</u>
<u>Channels</u>	<u>Middle</u>
<u>Signal</u>	<u>IEEE802.11a (Crest factor: 1.0)</u>

B. SAR Measurement Results

Frequency (MHz)	5745.000000
Relative permittivity (real part)	48.482973
Relative permittivity (imaginary part)	18.860566
Conductivity (S/m)	6.019664
Variation (%)	-1.000000

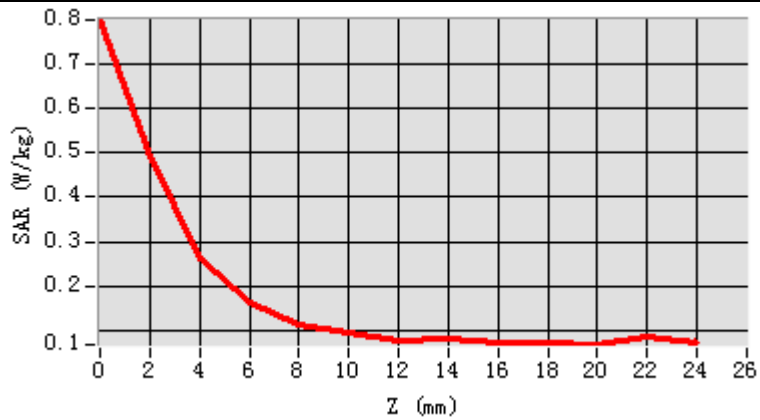


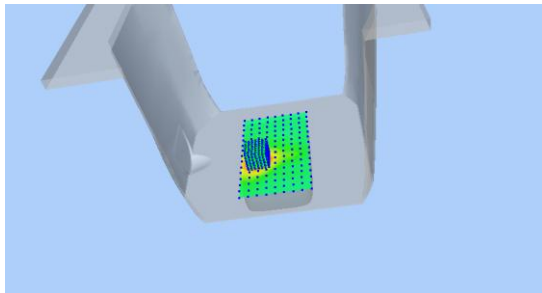
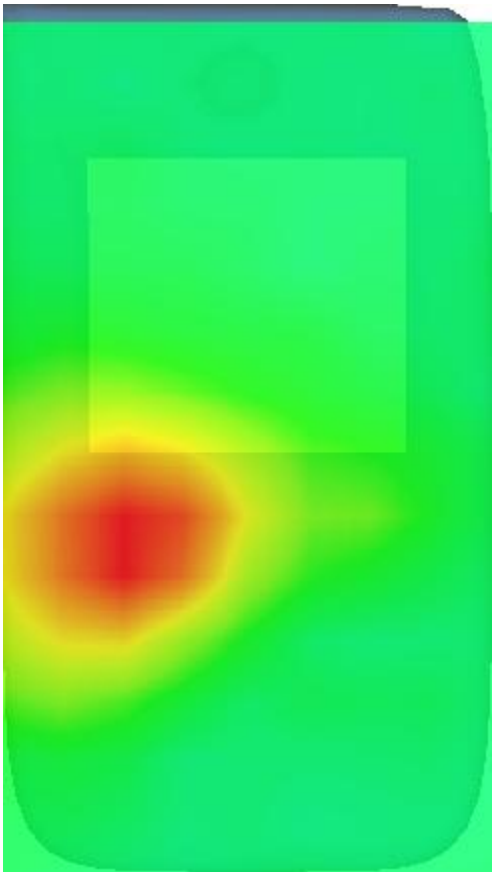
Maximum location: X=-19.00, Y=-16.00

SAR Peak: 0.85 W/kg

SAR 10g (W/Kg)	0.164036
SAR 1g (W/Kg)	0.310917

Z (m m)	0.00	2.00	4.00	6.00	8.00	10.0	12.0	14.0	16.0	18.0	20.0	22.0
SAR (W/ Kg)	0.79	0.49	0.26	0.16	0.11	0.09	0.07	0.07	0.07	0.07	0.06	0.08
	86	13	19	48	50	63	80	95	30	25	82	41



3D screen shot	Hot spot position
	

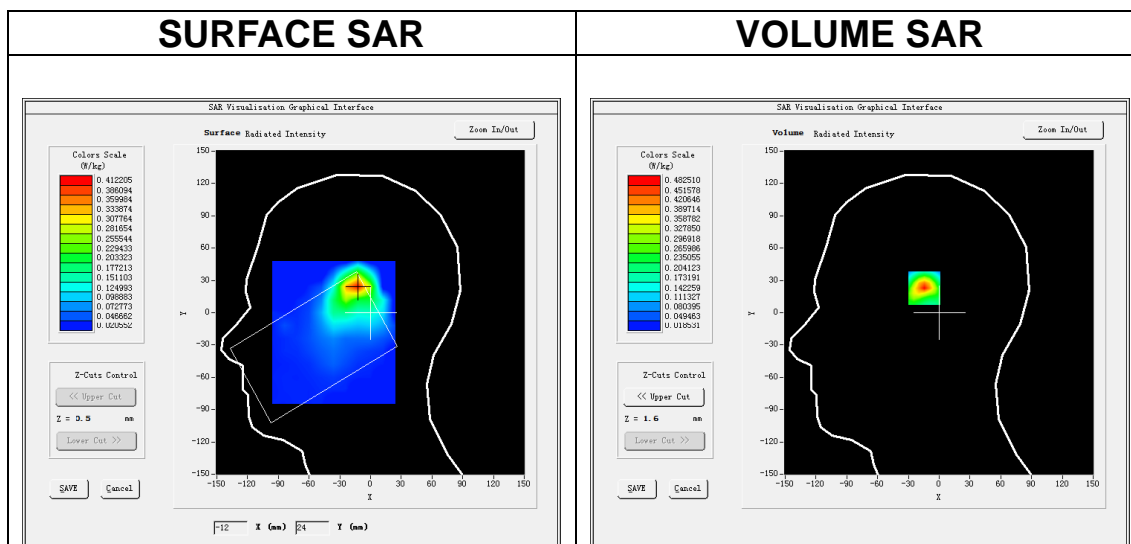
MEASUREMENT 15

A. Experimental conditions.

Area Scan	<u>dx=12mm dy=12mm, h= 5.00 mm</u>
ZoomScan	<u>7x7x7,dx=5mm dy=5mm dz=5mm</u>
Phantom	<u>Left head</u>
Device Position	<u>Cheek</u>
Band	<u>IEEE 802.11b ISM</u>
Channels	<u>Middle</u>
Signal	<u>IEEE802.11b (Crest factor: 1.0)</u>

B. SAR Measurement Results

Frequency (MHz)	2437.000000
Relative permittivity (real part)	38.771000
Relative permittivity (imaginary part)	13.710300
Conductivity (S/m)	1.856222
Variation (%)	-0.300000

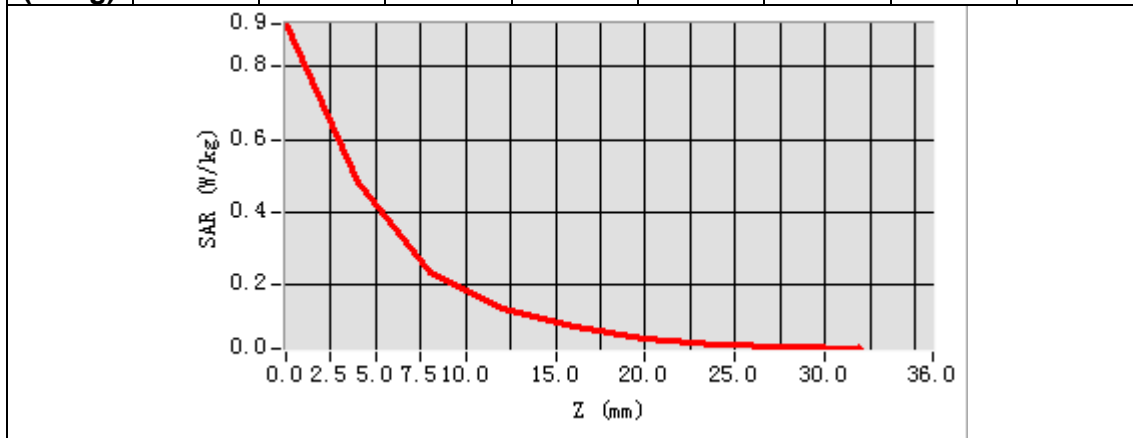


Maximum location: X=-13.00, Y=25.00

SAR Peak: 0.92 W/kg

SAR 10g (W/Kg)	0.203404
SAR 1g (W/Kg)	0.340026

Z (mm)	0.00	4.00	8.00	12.00	16.00	20.00	24.00	28.00
SAR (W/Kg)	0.9160	0.4825	0.2352	0.1385	0.0880	0.0537	0.0405	0.0331



3D screen shot	Hot spot position

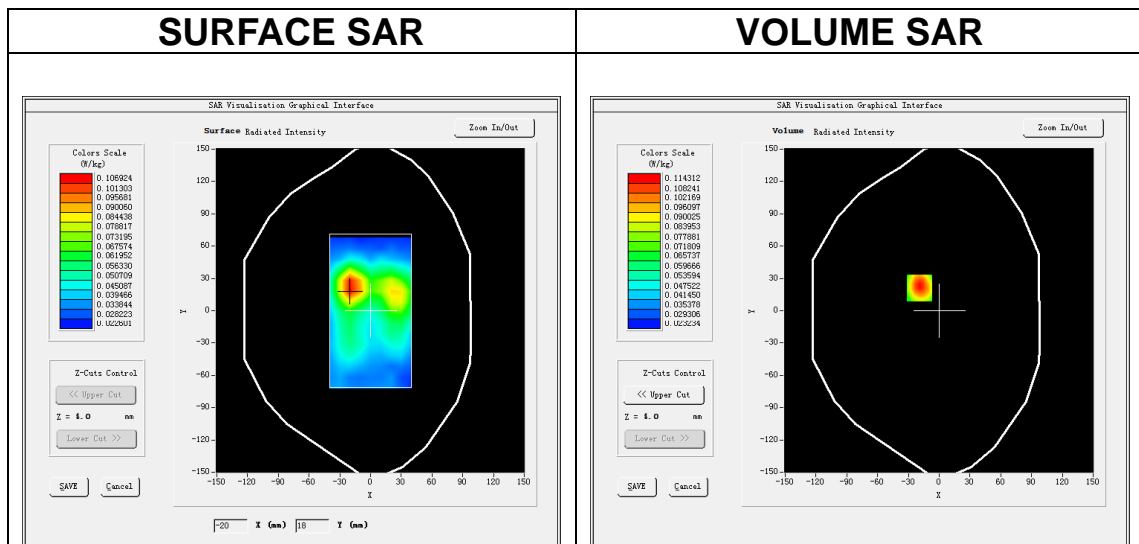
MEASUREMENT 16

A. Experimental conditions.

Area Scan	<u>dx=12mm dy=12mm, h= 5.00 mm</u>
ZoomScan	<u>7x7x7,dx=5mm dy=5mm dz=5mm</u>
Phantom	<u>Validation plane</u>
Device Position	<u>Body</u>
Band	<u>IEEE 802.11b ISM</u>
Channels	<u>Middle</u>
Signal	<u>IEEE802.11b (Crest factor: 1.0)</u>

B. SAR Measurement Results

Frequency (MHz)	2437.000000
Relative permittivity (real part)	52.151600
Relative permittivity (imaginary part)	14.835620
Conductivity (S/m)	2.008578
Variation (%)	-1.910000

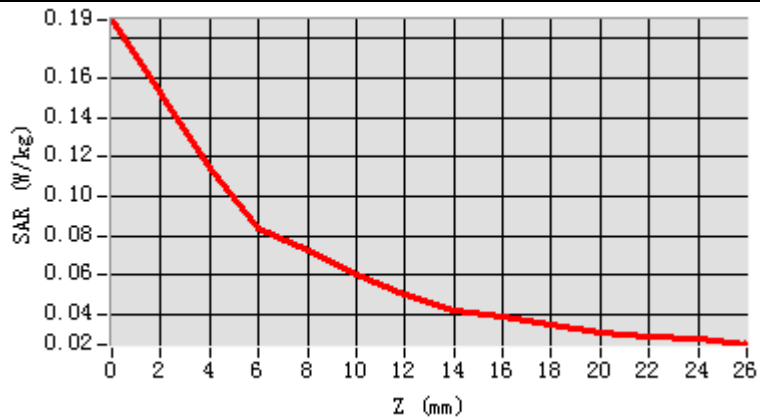


Maximum location: X=-19.00, Y=21.00

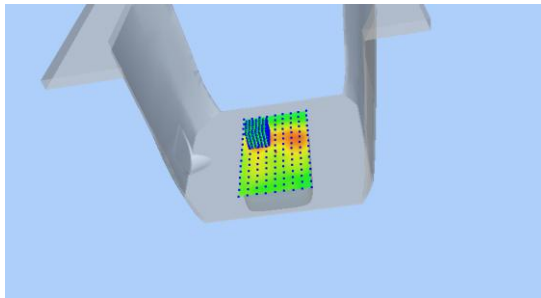
SAR Peak: 0.19 W/kg

SAR 10g (W/Kg)	0.065503
SAR 1g (W/Kg)	0.109570

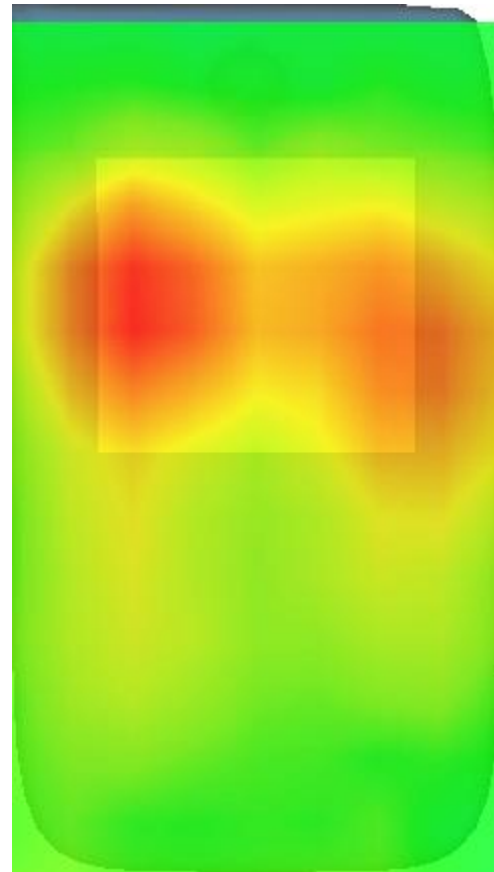
Z (m m)	0.00	4.00	6.00	8.00	10.0	12.0	14.0	16.0	18.0	20.0	22.0	24.0
SAR (W/ Kg)	0.1894	0.1143	0.0838	0.0729	0.0603	0.0500	0.0423	0.0387	0.0352	0.0314	0.0293	0.0283



3D screen shot



Hot spot position



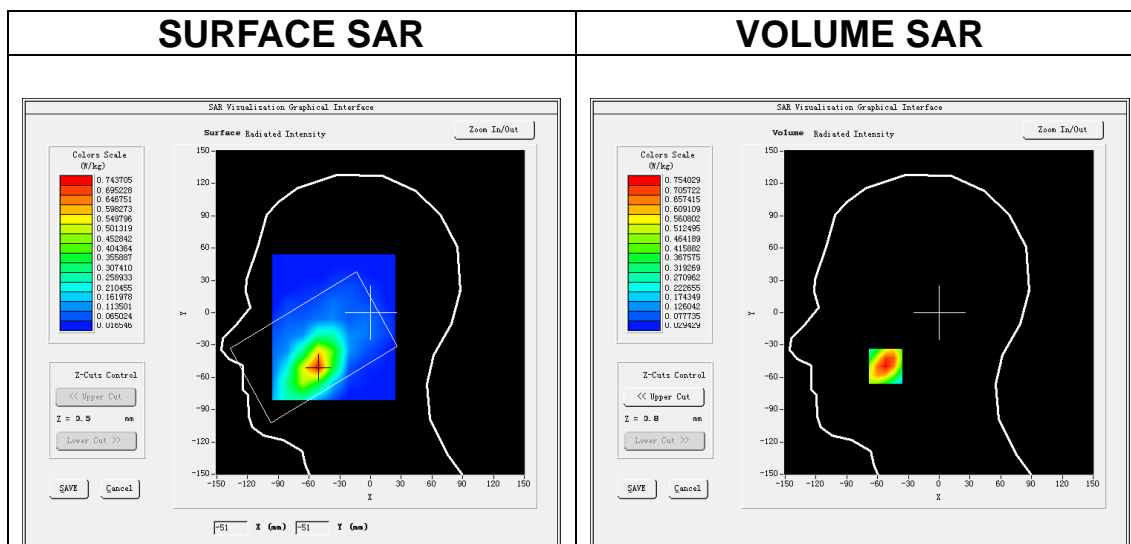
MEASUREMENT 17

A. Experimental conditions.

Area Scan	<u>dx=15mm dy=15mm, h= 5.00 mm</u>
ZoomScan	<u>5x5x7,dx=8mm dy=8mm dz=5mm</u>
Phantom	<u>Left head</u>
Device Position	<u>Cheek</u>
Band	<u>LTE band 2</u>
Channels	<u>Middle</u>
Signal	<u>LTE (Crest factor: 1.0)</u>

B. SAR Measurement Results

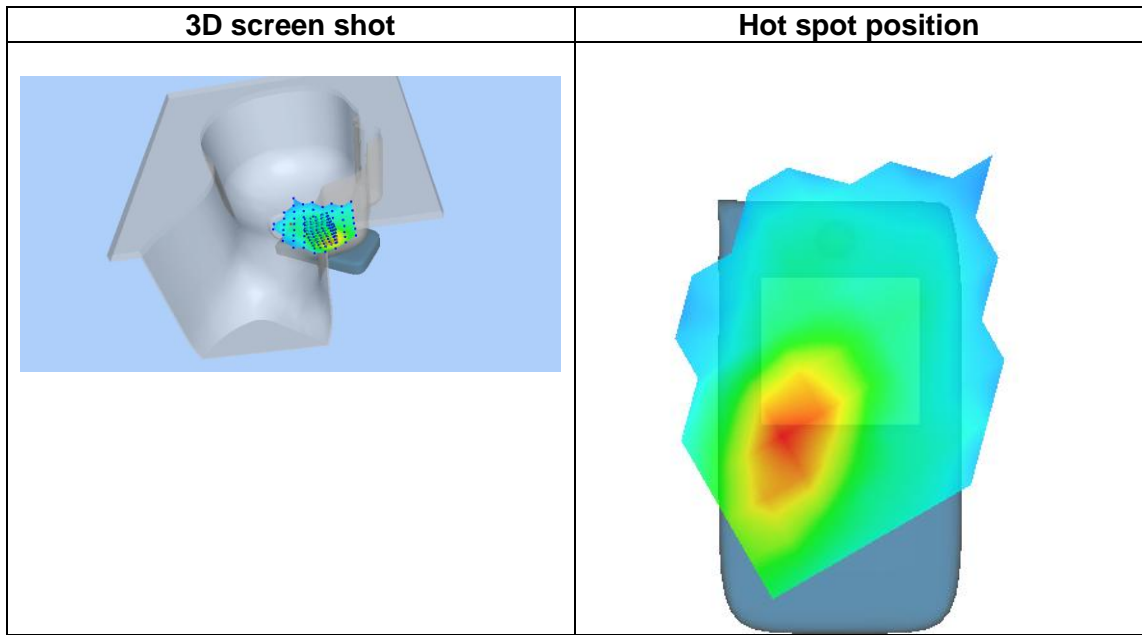
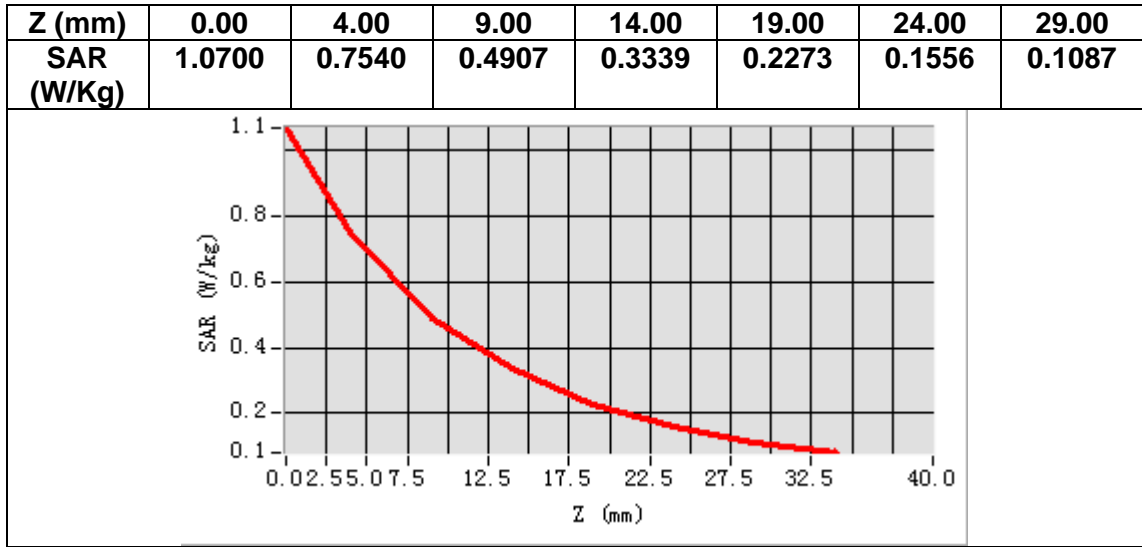
Frequency (MHz)	1880.000000
Relative permittivity (real part)	41.063801
Relative permittivity (imaginary part)	13.738100
Conductivity (S/m)	1.434487
Variation (%)	-2.600000



Maximum location: X=-52.00, Y=-50.00

SAR Peak: 1.09 W/kg

SAR 10g (W/Kg)	0.430903
SAR 1g (W/Kg)	0.676565



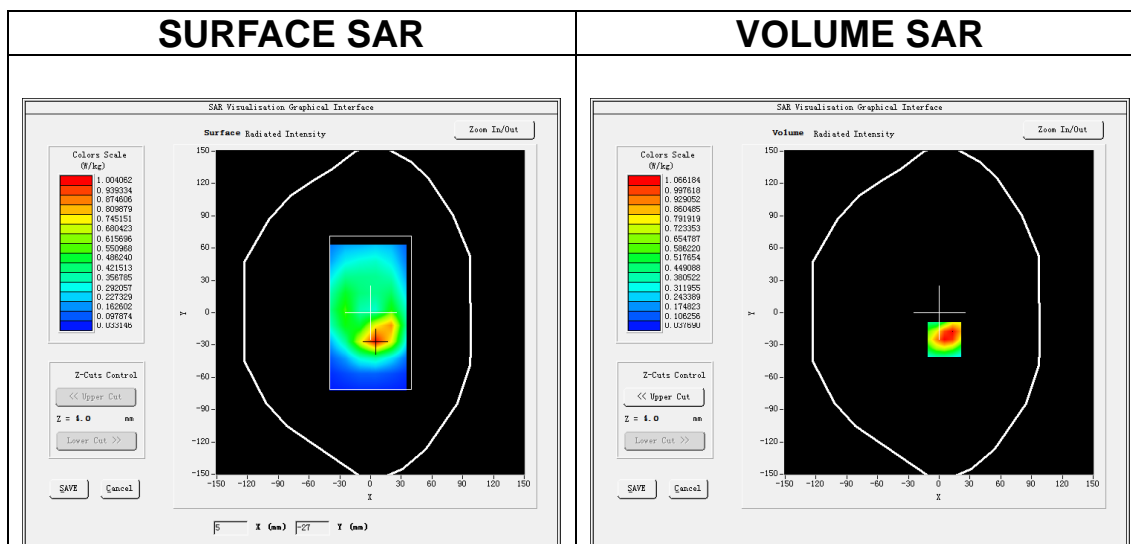
MEASUREMENT 18

A. Experimental conditions.

Area Scan	<u>dx=15mm dy=15mm, h= 5.00 mm</u>
ZoomScan	<u>5x5x7,dx=8mm dy=8mm dz=5mm</u>
Phantom	<u>Validation plane</u>
Device Position	<u>Body</u>
Band	<u>LTE band 2</u>
Channels	<u>Middle</u>
Signal	<u>LTE (Crest factor: 1.0)</u>

B. SAR Measurement Results

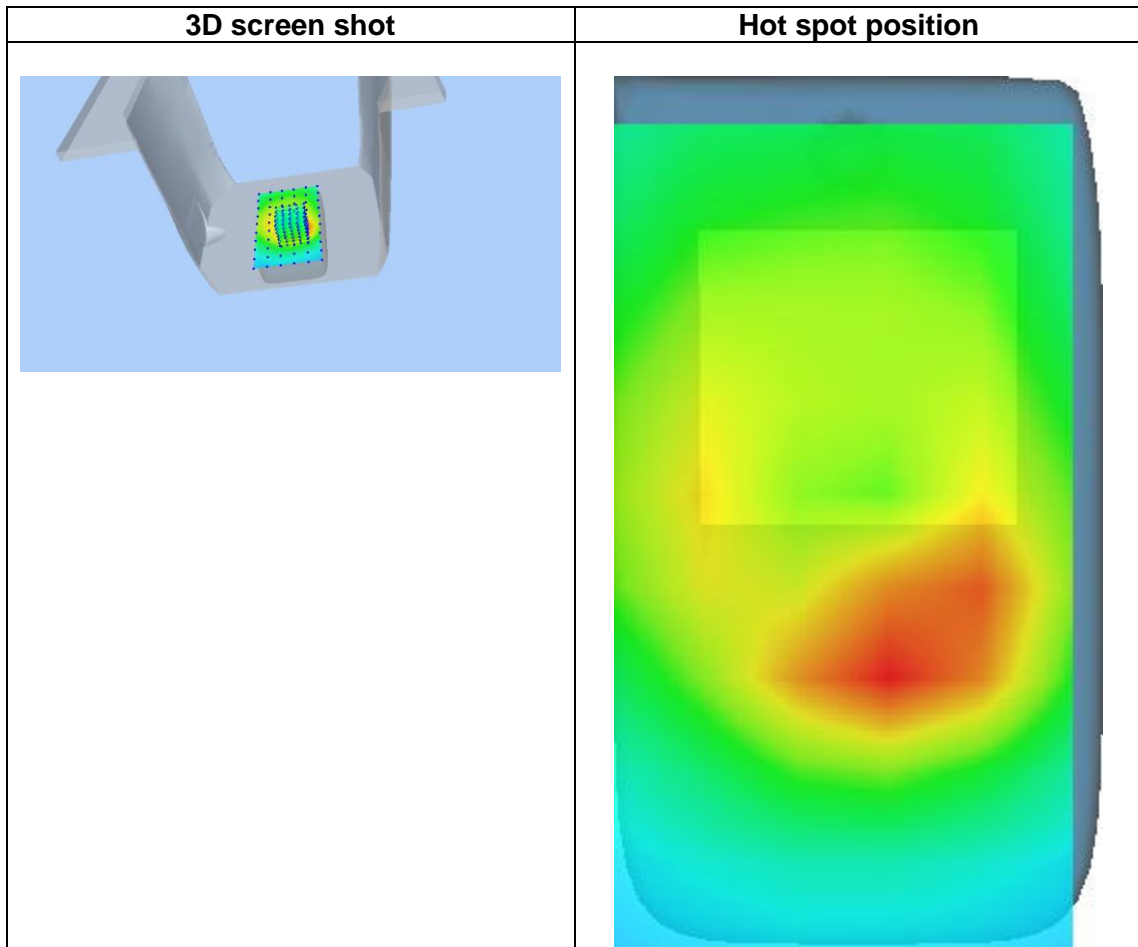
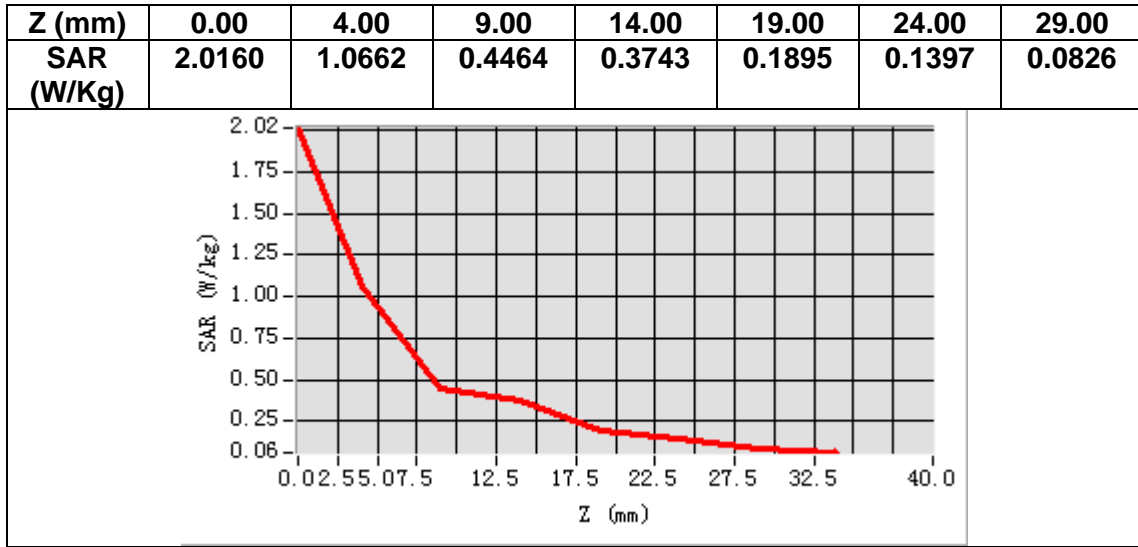
Frequency (MHz)	1880.000000
Relative permittivity (real part)	52.655949
Relative permittivity (imaginary part)	14.996150
Conductivity (S/m)	1.565848
Variation (%)	-1.630000



Maximum location: X=5.00, Y=-25.00

SAR Peak: 1.71 W/kg

SAR 10g (W/Kg)	0.580551
SAR 1g (W/Kg)	1.008585



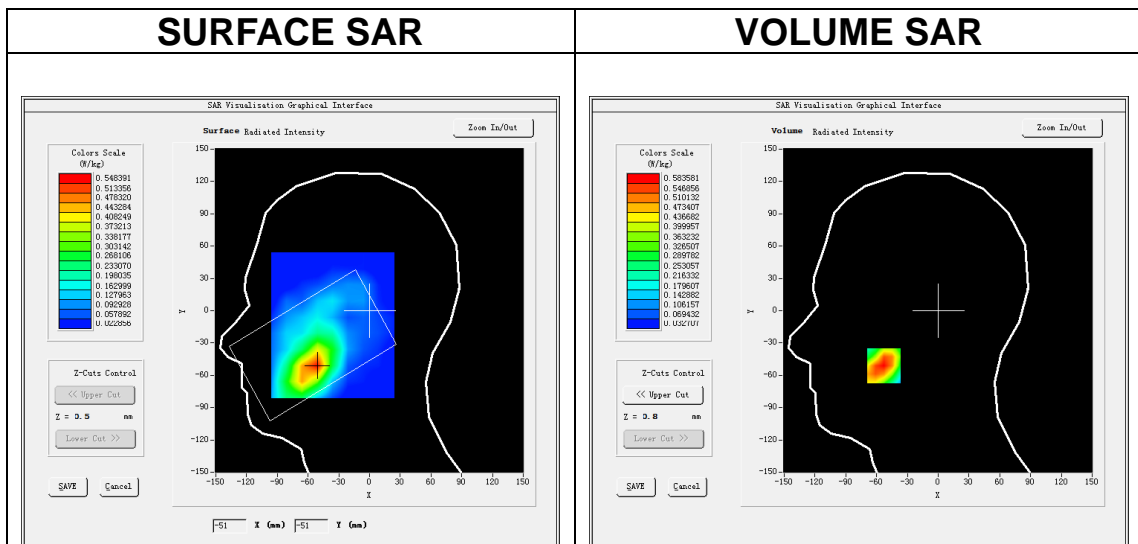
MEASUREMENT 19

A. Experimental conditions.

Area Scan	<u>dx=15mm dy=15mm, h= 5.00 mm</u>
ZoomScan	<u>5x5x7,dx=8mm dy=8mm dz=5mm</u>
Phantom	<u>Left head</u>
Device Position	<u>Cheek</u>
Band	<u>LTE band 4</u>
Channels	<u>Middle</u>
Signal	<u>LTE (Crest factor: 1.0)</u>

B. SAR Measurement Results

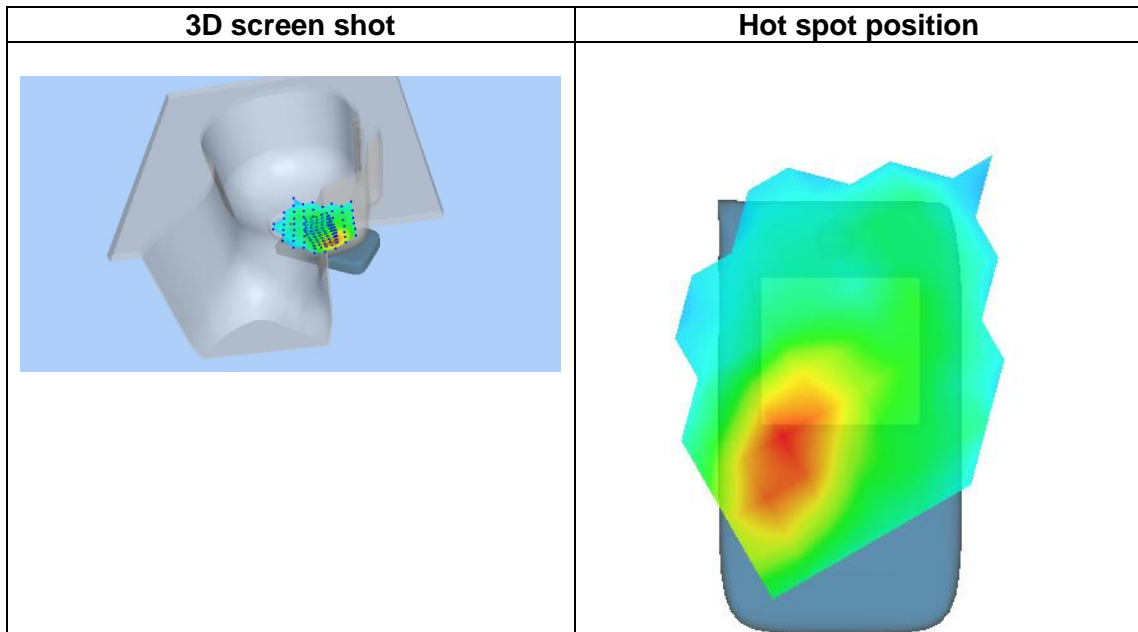
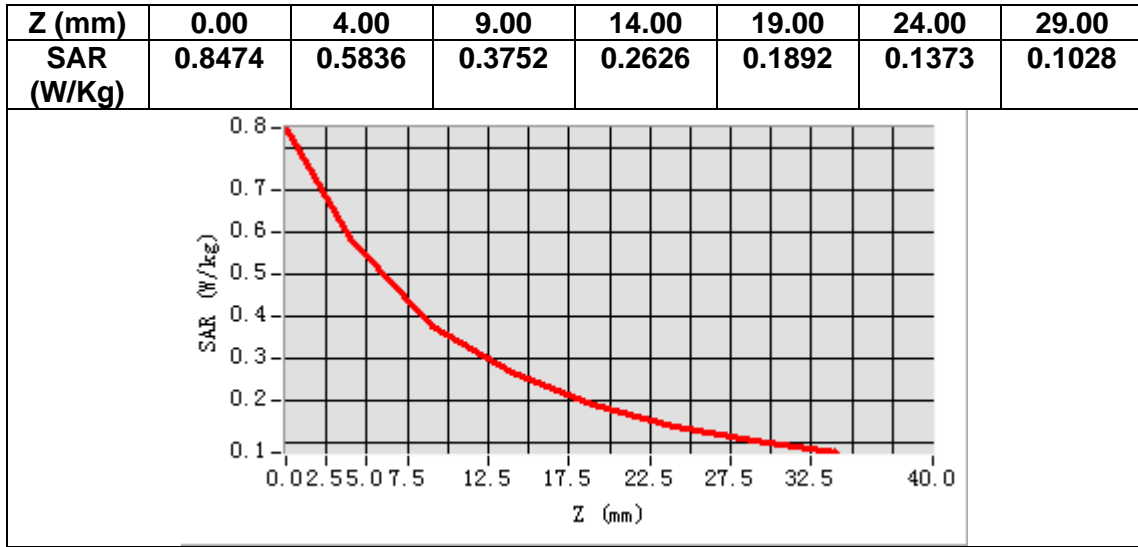
Frequency (MHz)	1732.500000
Relative permittivity (real part)	38.945290
Relative permittivity (imaginary part)	14.080592
Conductivity (S/m)	1.355257
Variation (%)	1.130000



Maximum location: X=-53.00, Y=-51.00

SAR Peak: 0.88 W/kg

SAR 10g (W/Kg)	0.337658
SAR 1g (W/Kg)	0.561223



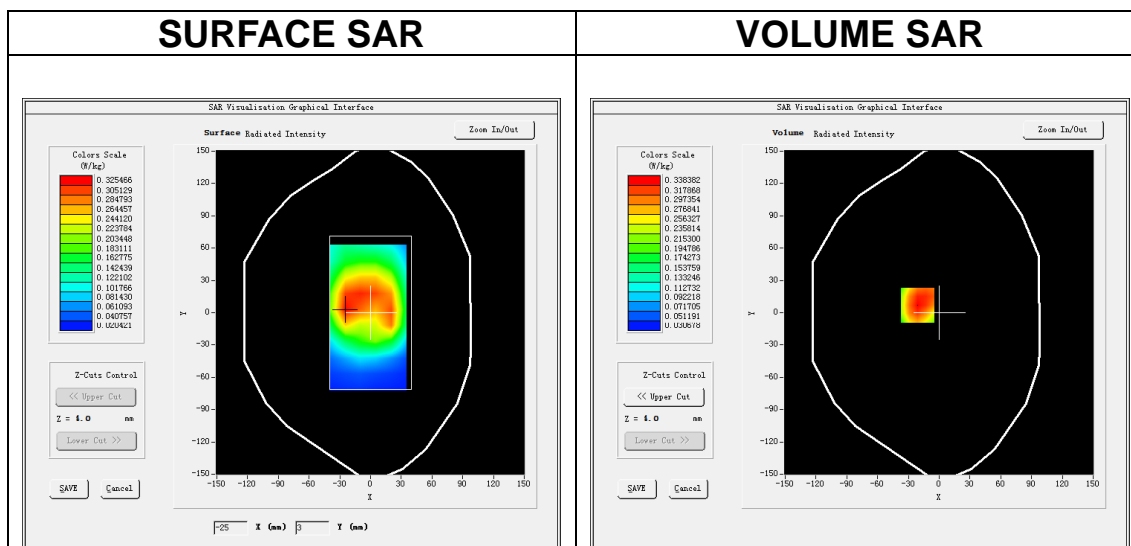
MEASUREMENT 20

A. Experimental conditions.

Area Scan	<u>dx=15mm dy=15mm, h= 5.00 mm</u>
ZoomScan	<u>5x5x7,dx=8mm dy=8mm dz=5mm</u>
Phantom	<u>Validation plane</u>
Device Position	<u>Body</u>
Band	<u>LTE band 4</u>
Channels	<u>Middle</u>
Signal	<u>LTE (Crest factor: 1.0)</u>

B. SAR Measurement Results

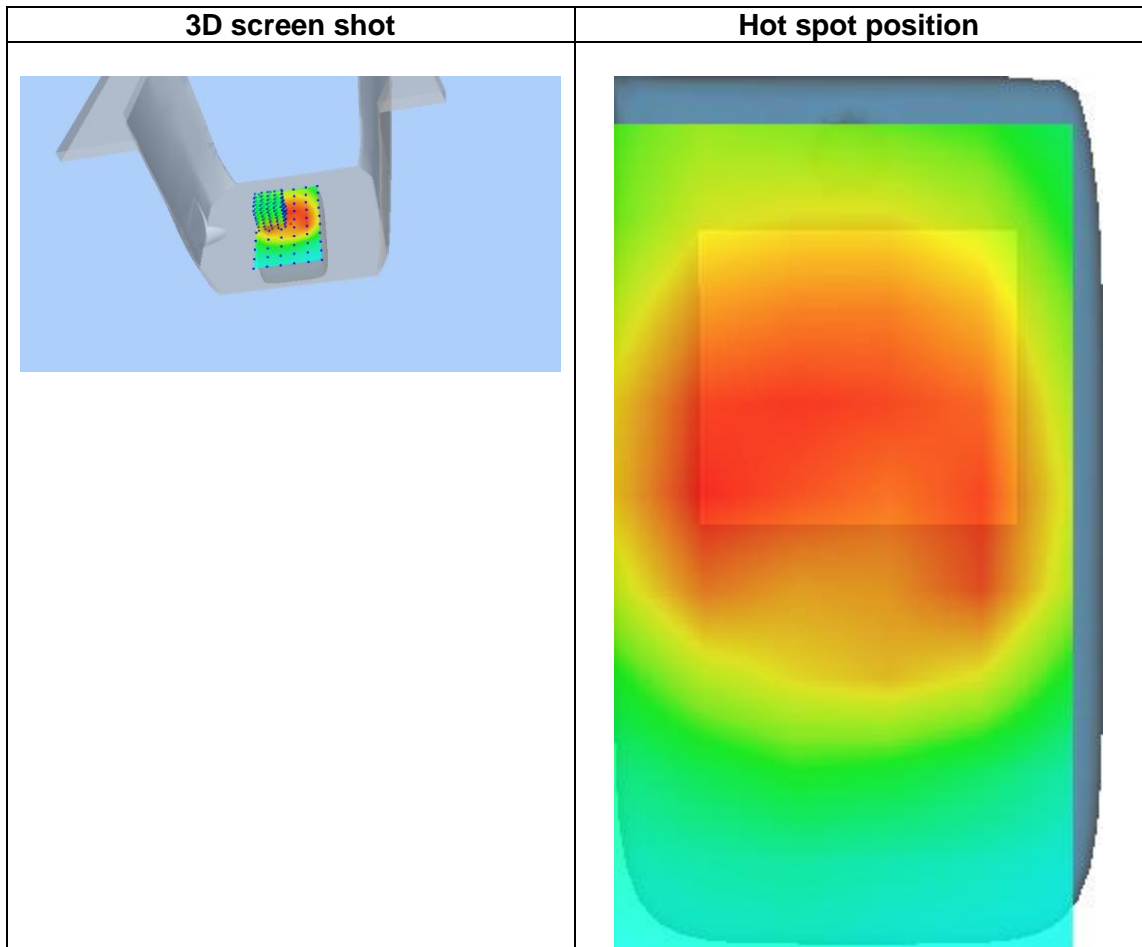
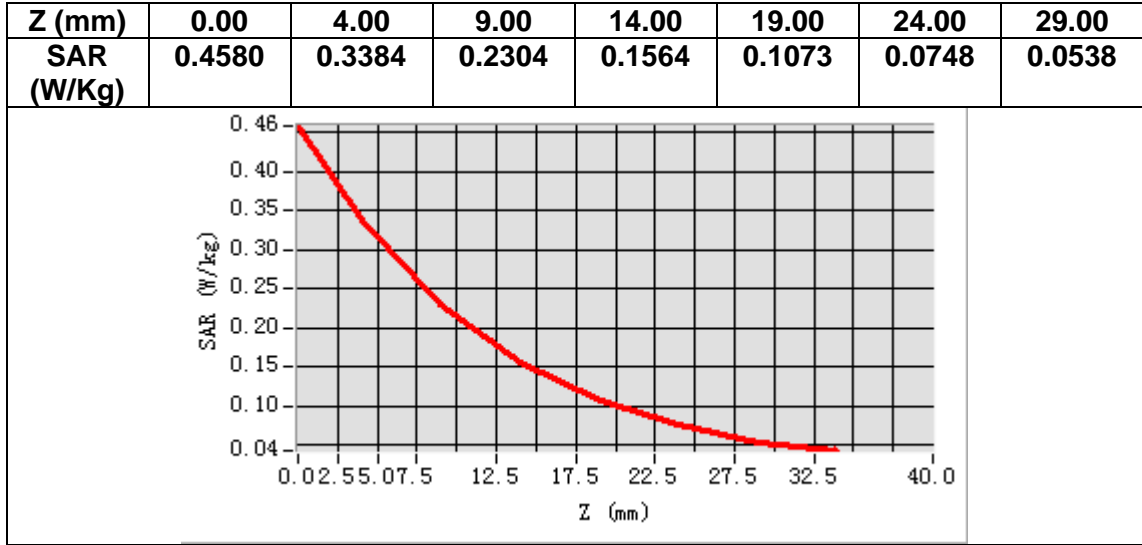
Frequency (MHz)	1732.500000
Relative permittivity (real part)	53.623367
Relative permittivity (imaginary part)	15.653220
Conductivity (S/m)	1.506622
Variation (%)	-1.110000



Maximum location: X=-21.00, Y=7.00

SAR Peak: 0.46 W/kg

SAR 10g (W/Kg)	0.215636
SAR 1g (W/Kg)	0.328907



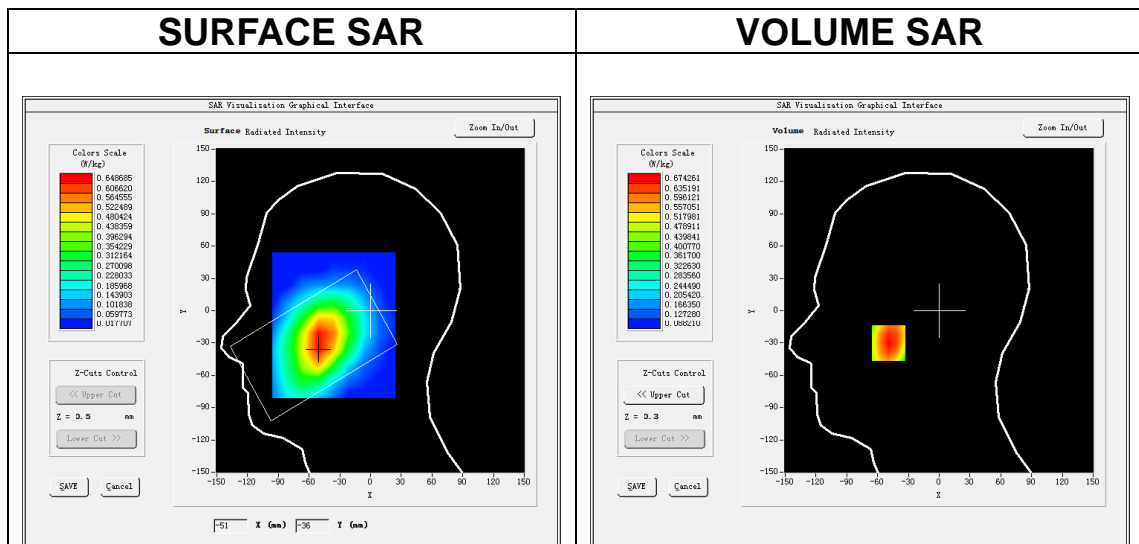
MEASUREMENT 21

A. Experimental conditions.

<u>Area Scan</u>	<u>dx=15mm dy=15mm, h= 5.00 mm</u>
<u>ZoomScan</u>	<u>5x5x7,dx=8mm dy=8mm dz=5mm</u>
<u>Phantom</u>	<u>Left head</u>
<u>Device Position</u>	<u>Cheek</u>
<u>Band</u>	<u>LTE band 5</u>
<u>Channels</u>	<u>Middle</u>
<u>Signal</u>	<u>LTE (Crest factor: 1.0)</u>

B. SAR Measurement Results

Frequency (MHz)	836.500000
Relative permittivity (real part)	40.443550
Relative permittivity (imaginary part)	20.180201
Conductivity (S/m)	0.937819
Variation (%)	-0.950000



Maximum location: X=-49.00, Y=-30.00

SAR Peak: 0.82 W/kg

SAR 10g (W/Kg)	0.507476
SAR 1g (W/Kg)	0.676383

