

Back Side	19100/1900	20M QPSK(1,49)	0.966	0.525	-4.56	23.36	24.00	1.119
50%RB								
Front Side	18900/1880	1.4M QPSK(3,0)	0.404	0.225	2.67	23.59	24.00	0.444
Back Side	18900/1880	1.4M QPSK(3,0)	0.630	0.329	-1.35	23.59	24.00	0.692
100%RB								
Back Side	18900/1880	20M QPSK(100,0)	0.544	0.323	0.09	22.10	23.00	0.669

NOTE: Body-Worn SAR test results of LTE Band 2

Test Position of Hotspot with 10mm	Test channel /Freq.	Test Mode	SAR Value (W/kg)		Power Drift (±5%)	Conducted power (dBm)	Tune-up power (dBm)	Scaled SAR 1g (W/Kg)
			1g	10g				
1RB								
Front Side	18900/1880	20M QPSK(1,49)	0.654	0.439	-0.11	23.29	24.00	0.770
Back Side	18900/1880	20M QPSK(1,49)	1.009	0.581	-1.63	23.29	24.00	1.188
Back Side Repeated	18900/1880	20M QPSK(1,49)	0.996	0.569	0.08	23.29	24.00	1.173
Left Side	18900/1880	20M QPSK(1,49)	0.597	0.429	0.84	23.29	24.00	0.703
Right Side	18900/1880	20M QPSK(1,49)	0.461	0.249	-3.50	23.29	24.00	0.543
Bottom Side	18900/1880	20M QPSK(1,49)	0.410	0.226	2.04	23.29	24.00	0.483
Back Side	18700/1860	20M QPSK(1,49)	0.942	0.509	2.30	23.10	24.00	1.159
Back Side	19100/1900	20M QPSK(1,49)	0.966	0.525	-4.56	23.36	24.00	1.119
50%RB								
Front Side	18900/1880	1.4M QPSK(3,0)	0.404	0.225	2.67	23.59	24.00	0.444
Back Side	18900/1880	1.4M QPSK(3,0)	0.630	0.329	-1.35	23.59	24.00	0.692
Left Side	18900/1880	1.4M QPSK(3,0)	0.368	0.228	-4.08	23.59	24.00	0.404
Right Side	18900/1880	1.4M QPSK(3,0)	0.263	0.130	3.65	23.59	24.00	0.289
Bottom Side	18900/1880	1.4M QPSK(3,0)	0.233	0.134	-0.40	23.59	24.00	0.256
100%RB								
Back Side	18900/1880	20M QPSK(100,0)	0.544	0.323	0.09	22.10	23.00	0.669

NOTE: Hotspot SAR test results of LTE Band 2

10.1.7. SAR measurement Result of LTE Band 4

Test Position of Head	Test channel /Freq.	Test Mode	SAR Value (W/kg)		Power Drift (±5%)	Conducted power (dBm)	Tune-up power (dBm)	Scaled SAR 1g (W/Kg)
			1g	10g				
1RB								
Left Cheek	20175/1732.5	20M QPSK(1,49)	0.561	0.338	1.13	22.99	24.00	0.708
Left Tilt 15 Degree	20175/1732.5	20M QPSK(1,49)	0.289	0.173	3.84	22.99	24.00	0.365
Right Cheek	20175/1732.5	20M QPSK(1,49)	0.521	0.311	2.97	22.99	24.00	0.657
Right Tilt 15 Degree	20175/1732.5	20M QPSK(1,49)	0.235	0.147	-2.77	22.99	24.00	0.297
50%RB								
Left Cheek	20175/1732.5	1.4M QPSK(3,1)	0.504	0.317	3.34	22.94	24.00	0.643
Left Tilt 15 Degree	20175/1732.5	1.4M QPSK(3,1)	0.268	0.154	2.13	22.94	24.00	0.342
Right Cheek	20175/1732.5	1.4M QPSK(3,1)	0.464	0.288	2.72	22.94	24.00	0.592
Right Tilt 15 Degree	20175/1732.5	1.4M QPSK(3,1)	0.216	0.127	4.98	22.94	24.00	0.276

NOTE: Head SAR test results of LTE Band 4

Test Position of Body-Worn with 10mm	Test channel /Freq.	Test Mode	SAR Value (W/kg)		Power Drift (±5%)	Conducted power (dBm)	Tune-up power (dBm)	Scaled SAR 1g (W/Kg)
			1g	10g				
1RB								
Front Side	20175/1732.5	20M QPSK(1,49)	0.275	0.184	-1.32	22.99	24.00	0.347
Back Side	20175/1732.5	20M QPSK(1,49)	0.329	0.216	-1.11	22.99	24.00	0.415
50%RB								
Front Side	20175/1732.5	1.4M QPSK(3,1)	0.247	0.172	0.12	22.94	24.00	0.315

	5							
Back Side	20175/1732. 5	1.4M QPSK(3,1)	0.307	0.193	-4.90	22.94	24.00	0.392

NOTE: Body-Worn SAR test results of LTE Band 4

Test Position of Hotspot with 10mm	Test channel /Freq.	Test Mode	SAR Value (W/kg)		Power Drift (±5%)	Conducted power (dBm)	Tune-up power (dBm)	Scaled SAR 1g (W/Kg)
			1g	10g				
1RB								
Front Side	20175/1732. 5	20M QPSK(1,49)	0.275	0.184	-1.32	22.99	24.00	0.347
Back Side	20175/1732. 5	20M QPSK(1,49)	0.329	0.216	-1.11	22.99	24.00	0.415
Left Side	20175/1732. 5	20M QPSK(1,49)	0.236	0.151	-0.67	22.99	24.00	0.298
Right Side	20175/1732. 5	20M QPSK(1,49)	0.142	0.095	-4.61	22.99	24.00	0.179
Bottom Side	20175/1732. 5	20M QPSK(1,49)	0.112	0.078	4.33	22.99	24.00	0.141
50%RB								
Front Side	20175/1732. 5	1.4M QPSK(3,1)	0.247	0.172	0.12	22.94	24.00	0.315
Back Side	20175/1732. 5	1.4M QPSK(3,1)	0.307	0.193	-4.90	22.94	24.00	0.392
Left Side	20175/1732. 5	1.4M QPSK(3,1)	0.208	0.141	-4.50	22.94	24.00	0.265
Right Side	20175/1732. 5	1.4M QPSK(3,1)	0.132	0.087	-4.11	22.94	24.00	0.168
Bottom Side	20175/1732. 5	1.4M QPSK(3,1)	0.103	0.071	0.45	22.94	24.00	0.131

NOTE: Hotspot SAR test results of LTE Band 4

10.1.8. SAR measurement Result of LTE Band 5

Test Position of Head	Test channel /Freq.	Test Mode	SAR Value (W/kg)		Power Drift (±5%)	Conducted power (dBm)	Tune-up power (dBm)	Scaled SAR 1g (W/Kg)
			1g	10g				
1RB								
Left	20525/836.5	10M QPSK(1,24)	0.676	0.507	-0.95	23.38	24.00	0.780

Cheek								
Left Tilt 15 Degree	20525/836.5	10M QPSK(1,24)	0.347	0.257	1.16	23.38	24.00	0.400
Right Cheek	20525/836.5	10M QPSK(1,24)	0.596	0.450	1.63	23.38	24.00	0.687
Right Tilt 15 Degree	20525/836.5	10M QPSK(1,24)	0.287	0.212	4.78	23.38	24.00	0.331
50%RB								
Left Cheek	20525/836.5	1.4M QPSK(3,1)	0.621	0.438	-2.07	23.22	24.00	0.743
Left Tilt 15 Degree	20525/836.5	1.4M QPSK(3,1)	0.329	0.221	-1.42	23.22	24.00	0.394
Right Cheek	20525/836.5	1.4M QPSK(3,1)	0.559	0.426	3.25	23.22	24.00	0.669
Right Tilt 15 Degree	20525/836.5	1.4M QPSK(3,1)	0.251	0.181	-2.32	23.22	24.00	0.300

NOTE: Head SAR test results of LTE Band 5

Test Position of Body-Worn with 10mm	Test channel /Freq.	Test Mode	SAR Value (W/kg)		Power Drift (±5%)	Conducted power (dBm)	Tune-up power (dBm)	Scaled SAR 1g (W/Kg)
			1g	10g				
1RB								
Front Side	20525/836.5	10M QPSK(1,24)	0.685	0.475	2.87	23.38	24.00	0.790
Back Side	20525/836.5	10M QPSK(1,24)	0.817	0.568	-0.68	23.38	24.00	0.942
Back Side Repeated	20525/836.5	10M QPSK(1,24)	0.800	0.561	0.04	23.38	24.00	0.923
Back Side	20450/829	10M QPSK(1,24)	0.808	0.560	-3.33	23.31	24.00	0.947
Back Side	20600/844	10M QPSK(1,24)	0.796	0.546	3.97	23.10	24.00	0.979
50%RB								
Front Side	20525/836.5	1.4M QPSK(3,1)	0.617	0.427	-2.98	23.22	24.00	0.738
Back Side	20525/836.5	1.4M QPSK(3,1)	0.644	0.489	1.06	23.22	24.00	0.771
100%RB								

Back Side	20525/836.5	10M QPSK(50,0)	0.577	0.398	0.07	22.16	23.00	0.700
-----------	-------------	-------------------	-------	-------	------	-------	-------	-------

NOTE: Body-Worn SAR test results of LTE Band 5

Test Position of Hotspot with 10mm	Test channel /Freq.	Test Mode	SAR Value (W/kg)		Power Drift ($\pm 5\%$)	Conducted power (dBm)	Tune-up power (dBm)	Scaled SAR 1g (W/Kg)
			1g	10g				
1RB								
Front Side	20525/836.5	10M QPSK(1,24)	0.685	0.475	2.87	23.38	24.00	0.790
Back Side	20525/836.5	10M QPSK(1,24)	0.817	0.568	-0.68	23.38	24.00	0.942
Back Side Repeated	20525/836.5	10M QPSK(1,24)	0.800	0.561	0.04	23.38	24.00	0.923
Left Side	20525/836.5	10M QPSK(1,24)	0.651	0.457	4.00	23.38	24.00	0.751
Right Side	20525/836.5	10M QPSK(1,24)	0.384	0.267	1.29	23.38	24.00	0.443
Bottom Side	20525/836.5	10M QPSK(1,24)	0.322	0.221	4.73	23.38	24.00	0.371
Back Side	20450/829	10M QPSK(1,24)	0.808	0.560	-3.33	23.31	24.00	0.947
Back Side	20600/844	10M QPSK(1,24)	0.796	0.546	3.97	23.10	24.00	0.979
50%RB								
Front Side	20525/836.5	1.4M QPSK(3,1)	0.617	0.427	-2.98	23.22	24.00	0.738
Back Side	20525/836.5	1.4M QPSK(3,1)	0.644	0.489	1.06	23.22	24.00	0.771
Left Side	20525/836.5	1.4M QPSK(3,1)	0.577	0.404	-1.04	23.22	24.00	0.691
Right Side	20525/836.5	1.4M QPSK(3,1)	0.334	0.229	-4.92	23.22	24.00	0.400
Bottom Side	20525/836.5	1.4M QPSK(3,1)	0.278	0.197	1.08	23.22	24.00	0.333
100%RB								
Back Side	20525/836.5	10M QPSK(50,0)	0.577	0.398	0.07	22.16	23.00	0.700

NOTE: Hotspot SAR test results of LTE Band 5

10.1.9. SAR measurement Result of LTE Band 7

Test Position of Head	Test channel /Freq.	Test Mode	SAR Value (W/kg)		Power Drift (±5%)	Conducted power (dBm)	Tune-up power (dBm)	Scaled SAR 1g (W/Kg)
			1g	10g				
1RB								
Left Cheek	21100/2535	20M QPSK(1,49)	0.914	0.500	-2.05	21.84	23.00	1.194
Left Cheek Repeated	21100/2535	20M QPSK(1,49)	0.903	0.489	0.02	21.84	23.00	1.179
Left Tilt 15 Degree	21100/2535	20M QPSK(1,49)	0.510	0.282	4.60	21.84	23.00	0.666
Right Cheek	21100/2535	20M QPSK(1,49)	0.607	0.474	3.16	21.84	23.00	0.793
Right Tilt 15 Degree	21100/2535	20M QPSK(1,49)	0.453	0.244	3.80	21.84	23.00	0.592
Left Cheek	20850/2510	20M QPSK(1,49)	0.800	0.410	-0.21	21.37	23.00	1.164
Left Cheek	21350/2560	20M QPSK(1,49)	0.850	0.455	3.33	22.49	23.00	0.956
50%RB								
Left Cheek	21100/2535	20M QPSK(50,49)	0.525	0.263	4.22	20.88	22.00	0.679
Left Tilt 15 Degree	21100/2535	20M QPSK(50,49)	0.285	0.158	-1.41	20.88	22.00	0.369
Right Cheek	21100/2535	20M QPSK(50,49)	0.486	0.241	-0.11	20.88	22.00	0.629
Right Tilt 15 Degree	21100/2535	20M QPSK(50,49)	0.227	0.140	-2.07	20.88	22.00	0.294
100%RB								
Left Cheek	21100/2535	20M QPSK(100,0)	0.551	0.276	0.13	20.78	22.00	0.730

NOTE: Head SAR test results of LTE Band 7

Test Position of Body-Worn with 10mm	Test channel /Freq.	Test Mode	SAR Value (W/kg)		Power Drift (±5%)	Conducted power (dBm)	Tune-up power (dBm)	Scaled SAR 1g (W/Kg)
			1g	10g				
1RB								
Front Side	21100/2535	20M QPSK(1,49)	0.473	0.228	0.24	21.84	23.00	0.618
Back Side	21100/2535	20M QPSK(1,49)	0.611	0.301	-2.22	21.84	23.00	0.798
50%RB								
Front Side	21100/2535	20M QPSK(50,49)	0.237	0.123	-3.36	20.88	22.00	0.307
Back Side	21100/2535	20M QPSK(50,49)	0.307	0.151	-4.85	20.88	22.00	0.397

NOTE: Body-Worn SAR test results of LTE Band 7

Test Position of Hotspot with 10mm	Test channel /Freq.	Test Mode	SAR Value (W/kg)		Power Drift (±5%)	Conducted power (dBm)	Tune-up power (dBm)	Scaled SAR 1g (W/Kg)
			1g	10g				
1RB								
Front Side	21100/2535	20M QPSK(1,49)	0.473	0.228	0.24	21.84	23.00	0.618
Back Side	21100/2535	20M QPSK(1,49)	0.611	0.301	-2.22	21.84	23.00	0.798
Left Side	21100/2535	20M QPSK(1,49)	0.477	0.236	-0.27	21.84	23.00	0.623
Right Side	21100/2535	20M QPSK(1,49)	0.293	0.139	3.79	21.84	23.00	0.383
Bottom Side	21100/2535	20M QPSK(1,49)	0.220	0.109	1.21	21.84	23.00	0.287
50%RB								
Front Side	21100/2535	20M QPSK(50,49)	0.237	0.123	-3.36	20.88	22.00	0.307
Back Side	21100/2535	20M QPSK(50,49)	0.307	0.151	-4.85	20.88	22.00	0.397
Left Side	21100/2535	20M QPSK(50,49)	0.275	0.138	-0.54	20.88	22.00	0.356
Right Side	21100/2535	20M QPSK(50,49)	0.158	0.074	-4.47	20.88	22.00	0.204
Bottom Side	21100/2535	20M QPSK(50,49)	0.126	0.062	-1.31	20.88	22.00	0.163

NOTE: Hotspot SAR test results of LTE Band 7

10.1.10. SAR measurement Result of LTE Band 12

Test Position of Head	Test channel /Freq.	Test Mode	SAR Value (W/kg)		Power Drift (±5%)	Conducted power (dBm)	Tune-up power (dBm)	Scaled SAR 1g (W/Kg)
			1g	10g				
1RB								
Left Cheek	23095/707.5	10M QPSK(1,24)	0.418	0.330	-0.11	21.88	23.00	0.541
Left Tilt 15 Degree	23095/707.5	10M QPSK(1,24)	0.239	0.187	-0.10	21.88	23.00	0.309
Right Cheek	23095/707.5	10M QPSK(1,24)	0.396	0.310	1.81	21.88	23.00	0.513
Right Tilt 15 Degree	23095/707.5	10M QPSK(1,24)	0.201	0.160	1.77	21.88	23.00	0.260
50%RB								
Left Cheek	23095/707.5	1.4M QPSK(3,2)	0.366	0.300	1.78	21.83	22.00	0.381
Left Tilt 15 Degree	23095/707.5	1.4M QPSK(3,2)	0.206	0.167	3.87	21.83	22.00	0.214
Right Cheek	23095/707.5	1.4M QPSK(3,2)	0.352	0.278	-3.10	21.83	22.00	0.366
Right Tilt 15 Degree	23095/707.5	1.4M QPSK(3,2)	0.187	0.148	-2.40	21.83	22.00	0.194

NOTE: Head SAR test results of LTE Band 12

Test Position of Body-Worn with 10mm	Test channel /Freq.	Test Mode	SAR Value (W/kg)		Power Drift (±5%)	Conducted power (dBm)	Tune-up power (dBm)	Scaled SAR 1g (W/Kg)
			1g	10g				
1RB								
Front Side	23095/707.5	10M QPSK(1,24)	0.460	0.353	-4.07	21.88	23.00	0.595
Back Side	23095/707.5	10M QPSK(1,24)	0.607	0.468	-0.63	21.88	23.00	0.786
50%RB								
Front Side	23095/707.5	1.4M QPSK(3,2)	0.405	0.317	-3.26	21.83	22.00	0.421

Back Side	23095/707.5	1.4M QPSK(3,2)	0.549	0.402	3.30	21.83	22.00	0.571
-----------	-------------	----------------	-------	-------	------	-------	-------	-------

NOTE: Body-Worn SAR test results of LTE Band 12

Test Position of Hotspot with 10mm	Test channel /Freq.	Test Mode	SAR Value (W/kg)		Power Drift (±5%)	Conducted power (dBm)	Tune-up power (dBm)	Scaled SAR 1g (W/Kg)
			1g	10g				
1RB								
Front Side	23095/707.5	10M QPSK(1,24)	0.460	0.353	-4.07	21.88	23.00	0.595
Back Side	23095/707.5	10M QPSK(1,24)	0.607	0.468	-0.63	21.88	23.00	0.786
Left Side	23095/707.5	10M QPSK(1,24)	0.443	0.340	0.75	21.88	23.00	0.573
Right Side	23095/707.5	10M QPSK(1,24)	0.269	0.203	0.60	21.88	23.00	0.348
Bottom Side	23095/707.5	10M QPSK(1,24)	0.230	0.176	-4.21	21.88	23.00	0.298
50%RB								
Front Side	23095/707.5	1.4M QPSK(3,2)	0.405	0.317	-3.26	21.83	22.00	0.421
Back Side	23095/707.5	1.4M QPSK(3,2)	0.549	0.402	3.30	21.83	22.00	0.571
Left Side	23095/707.5	1.4M QPSK(3,2)	0.406	0.292	2.26	21.83	22.00	0.422
Right Side	23095/707.5	1.4M QPSK(3,2)	0.235	0.180	-1.87	21.83	22.00	0.244
Bottom Side	23095/707.5	1.4M QPSK(3,2)	0.204	0.153	-2.50	21.83	22.00	0.212

NOTE: Hotspot SAR test results of LTE Band 12

10.1.11. SAR measurement Result of LTE Band 17

Test Position of Head	Test channel /Freq.	Test Mode	SAR Value (W/kg)		Power Drift (±5%)	Conducted power (dBm)	Tune-up power (dBm)	Scaled SAR 1g (W/Kg)
			1g	10g				
1RB								
Left Cheek	23790/710	10M QPSK(1,24)	0.394	0.311	-0.33	22.71	23.00	0.421
Left Tilt	23790/710	10M QPSK(1,24)	0.226	0.183	4.30	22.71	23.00	0.242

15 Degree								
Right Cheek	23790/710	10M QPSK(1,24)	0.365	0.286	-0.98	22.71	23.00	0.390
Right Tilt 15 Degree	23790/710	10M QPSK(1,24)	0.180	0.144	1.35	22.71	23.00	0.192
50%RB								
Left Cheek	23790/710	10M QPSK(25,0)	0.221	0.183	-1.39	21.73	22.00	0.235
Left Tilt 15 Degree	23790/710	10M QPSK(25,0)	0.119	0.094	2.25	21.73	22.00	0.127
Right Cheek	23790/710	10M QPSK(25,0)	0.188	0.161	2.10	21.73	22.00	0.200
Right Tilt 15 Degree	23790/710	10M QPSK(25,0)	0.105	0.083	2.25	21.73	22.00	0.112

NOTE: Head SAR test results of LTE Band 17

Test Position of Body-Worn with 10mm	Test channel /Freq.	Test Mode	SAR Value (W/kg)		Power Drift ($\pm 5\%$)	Conducted power (dBm)	Tune-up power (dBm)	Scaled SAR 1g (W/Kg)
			1g	10g				
1RB								
Front Side	23790/710	10M QPSK(1,24)	0.509	0.388	1.50	22.71	23.00	0.544
Back Side	23790/710	10M QPSK(1,24)	0.629	0.483	-1.31	22.71	23.00	0.672
50%RB								
Front Side	23790/710	10M QPSK(25,0)	0.286	0.202	4.88	21.73	22.00	0.304
Back Side	23790/710	10M QPSK(25,0)	0.336	0.284	-4.19	21.73	22.00	0.358

NOTE: Body-Worn SAR test results of LTE Band 17

Test Position of Hotspot with 10mm	Test channel /Freq.	Test Mode	SAR Value (W/kg)		Power Drift ($\pm 5\%$)	Conducted power (dBm)	Tune-up power (dBm)	Scaled SAR 1g (W/Kg)
			1g	10g				
1RB								
Front Side	23790/710	10M QPSK(1,24)	0.509	0.388	1.50	22.71	23.00	0.544

Back Side	23790/710	10M QPSK(1,24)	0.629	0.483	-1.31	22.71	23.00	0.672
Left Side	23790/710	10M QPSK(1,24)	0.497	0.381	-0.03	22.71	23.00	0.531
Right Side	23790/710	10M QPSK(1,24)	0.275	0.209	-4.12	22.71	23.00	0.294
Bottom Side	23790/710	10M QPSK(1,24)	0.249	0.193	3.83	22.71	23.00	0.266
50%RB								
Front Side	23790/710	10M QPSK(25,0)	0.286	0.202	4.88	21.73	22.00	0.304
Back Side	23790/710	10M QPSK(25,0)	0.336	0.284	-4.19	21.73	22.00	0.358
Left Side	23790/710	10M QPSK(25,0)	0.289	0.202	-1.67	21.73	22.00	0.308
Right Side	23790/710	10M QPSK(25,0)	0.162	0.113	2.86	21.73	22.00	0.172
Bottom Side	23790/710	10M QPSK(25,0)	0.131	0.110	0.96	21.73	22.00	0.139

NOTE: Hotspot SAR test results of LTE Band 17

10.1.12. SAR measurement Result of WLAN 2.4G

Test Position of Head	Test channel /Freq.	Test Mode	SAR Value (W/kg)		Power Drift (±5%)	Conducted power (dBm)	Tune-up power (dBm)	Scaled SAR 1g (W/Kg)
			1g	10g				
Left Cheek	6/2437	802.11b	0.340	0.203	-0.30	13.26	14.00	0.403
Left Tilt 15 Degree	6/2437	802.11b	0.240	0.111	2.88	13.26	14.00	0.285
Right Cheek	6/2437	802.11b	0.275	0.174	-0.06	13.26	14.00	0.326
Right Tilt 15 Degree	6/2437	802.11b	0.178	0.081	4.84	13.26	14.00	0.211

NOTE: Head SAR test results of WLAN 2.4G

Test Position of Body-Worn with 10mm	Test channel /Freq.	Test Mode	SAR Value (W/kg)		Power Drift (±5%)	Conducted power (dBm)	Tune-up power (dBm)	Scaled SAR 1g (W/Kg)
			1g	10g				
Front Side	6/2437	802.11b	0.067	0.041	-3.14	13.26	14.00	0.079
Back Side	6/2437	802.11b	0.110	0.066	-1.91	13.26	14.00	0.130

NOTE: Body-Worn SAR test results of WLAN 2.4G

Test Position of Hotspot with 10mm	Test channel /Freq.	Test Mode	SAR Value (W/kg)		Power Drift (±5%)	Conducted power (dBm)	Tune-up power (dBm)	Scaled SAR 1g (W/Kg)
			1g	10g				
Front Side	6/2437	802.11b	0.067	0.041	-3.14	13.26	14.00	0.079
Back Side	6/2437	802.11b	0.110	0.066	-1.91	13.26	14.00	0.130
Right Side	6/2437	802.11b	0.026	0.016	-0.43	13.26	14.00	0.031
Top Side	6/2437	802.11b	0.038	0.020	2.42	13.26	14.00	0.045

NOTE: Hotspot SAR test results of WLAN 2.4G

10.1.13. SAR measurement Result of WLAN 5.2G

Test Position of Head	Test channel /Freq.	Test Mode	SAR Value (W/kg)		Power Drift (±5%)	Conducted power (dBm)	Tune-up power (dBm)	Scaled SAR 1g (W/Kg)
			1g	10g				
Right Cheek	40/5200	802.11a	0.217	0.100	-0.47	8.52	10.00	0.305
Right Tilt 15 Degree	40/5200	802.11a	0.127	0.056	0.50	8.52	10.00	0.179
Left Cheek	40/5200	802.11a	0.202	0.091	-4.68	8.52	10.00	0.284
Left Tilt 15 Degree	40/5200	802.11a	0.107	0.048	0.47	8.52	10.00	0.150

NOTE: Head SAR test results of WLAN 5.2G

Test Position of Body-Worn with 10mm	Test channel /Freq.	Test Mode	SAR Value (W/kg)		Power Drift (±5%)	Conducted power (dBm)	Tune-up power (dBm)	Scaled SAR 1g (W/Kg)
			1g	10g				
Front Side	40/5200	802.11a	0.102	0.069	3.01	8.52	10.00	0.143
Back Side	40/5200	802.11a	0.167	0.111	-3.93	8.52	10.00	0.235

NOTE: Body-Worn SAR test results of WLAN 5.2G

Test Position of Hotspot with 10mm	Test channel /Freq.	Test Mode	SAR Value (W/kg)		Power Drift (±5%)	Conducted power (dBm)	Tune-up power (dBm)	Scaled SAR 1g (W/Kg)
			1g	10g				
Front Side	40/5200	802.11a	0.102	0.069	3.01	8.52	10.00	0.143
Back Side	40/5200	802.11a	0.167	0.111	-3.93	8.52	10.00	0.235
Right Side	40/5200	802.11a	0.034	0.027	0.44	8.52	10.00	0.048
Top Side	40/5200	802.11a	0.051	0.038	0.21	8.52	10.00	0.072

NOTE: Hotspot SAR test results of WLAN 5.2G

10.1.14. SAR measurement Result of WLAN 5.8G

Test Position of Head	Test channel /Freq.	Test Mode	SAR Value (W/kg)		Power Drift (±5%)	Conducted power (dBm)	Tune-up power (dBm)	Scaled SAR 1g (W/Kg)
			1g	10g				
Right Cheek	149/5745	802.11a	0.342	0.155	2.63	9.37	10.00	0.396
Right Tilt 15 Degree	149/5745	802.11a	0.212	0.074	-1.10	9.37	10.00	0.245
Left Cheek	149/5745	802.11a	0.269	0.137	-2.87	9.37	10.00	0.311
Left Tilt 15 Degree	149/5745	802.11a	0.182	0.066	3.94	9.37	10.00	0.210

NOTE: Head SAR test results of WLAN 5.8G

Test Position of Body-Worn with 10mm	Test channel /Freq.	Test Mode	SAR Value (W/kg)		Power Drift (±5%)	Conducted power (dBm)	Tune-up power (dBm)	Scaled SAR 1g (W/Kg)
			1g	10g				
Front Side	149/5745	802.11a	0.192	0.100	0.97	9.37	10.00	0.222
Back Side	149/5745	802.11a	0.311	0.164	-1.00	9.37	10.00	0.360

NOTE: Body-Worn SAR test results of WLAN 5.8G

Test Position of Hotspot with 10mm	Test channel /Freq.	Test Mode	SAR Value (W/kg)		Power Drift (±5%)	Conducted power (dBm)	Tune-up power (dBm)	Scaled SAR 1g (W/Kg)
			1g	10g				
Front Side	149/5745	802.11a	0.192	0.100	0.97	9.37	10.00	0.222
Back Side	149/5745	802.11a	0.311	0.164	-1.00	9.37	10.00	0.360
Right Side	149/5745	802.11a	0.074	0.038	0.68	9.37	10.00	0.086
Top Side	149/5745	802.11a	0.102	0.057	2.67	9.37	10.00	0.118

NOTE: Hotspot SAR test results of WLAN 5.2G

10.2. SAR Summation Scenario

Per KDB 447498 D01, simultaneous transmission SAR is compliant if,

- 1) Scalar SAR summation < 1.6W/kg.
- 2) $SPLSR = (SAR_1 + SAR_2)^{1.5} / (\text{min. separation distance, mm})$, and the peak separation distance is determined from the square root of $[(x_1-x_2)^2 + (y_1-y_2)^2 + (z_1-z_2)^2]$, where (x_1, y_1, z_1) and (x_2, y_2, z_2) are the coordinates of the extrapolated peak SAR locations in the zoom scan. If $SPLSR \leq 0.04$, simultaneously transmission SAR measurement is not necessary.

Test Position	Scaled SAR _{MAX}	∑ 1-g SAR	SPLSR	Remark
---------------	---------------------------	-----------	-------	--------

		GSM 850	WLAN 2.4G	(W/Kg)		
Head	Left Cheek	1.129	0.403	1.532	N/A	N/A
	Left Tilt 15 Degree	0.548	0.285	0.833	N/A	N/A
	Right Cheek	0.783	0.326	1.109	N/A	N/A
	Right Tilt 15 Degree	0.532	0.211	0.743	N/A	N/A
Body-Worn	Front Side	0.714	0.079	0.793	N/A	N/A
	Back Side	1.121	0.130	1.251	N/A	N/A
Hotspot	Front Side	0.714	0.079	0.793	N/A	N/A
	Back Side	1.121	0.130	1.251	N/A	N/A
	Left Side	0.783	N/A	0.783	N/A	N/A
	Right Side	0.499	0.031	0.530	N/A	N/A
	Top Side	N/A	0.045	0.045	N/A	N/A
	Bottom Side	0.406	N/A	0.406	N/A	N/A

NOTE: 1-g SAR Simultaneous Tx Combination of GSM850 and WLAN 2.4G.

Test Position		Scaled SAR _{MAX}		Σ 1-g SAR (W/Kg)	SPLSR	Remark
		GSM 1900	WLAN 2.4G			
Head	Left Cheek	1.183	0.403	1.586	N/A	N/A
	Left Tilt 15 Degree	0.702	0.285	0.987	N/A	N/A
	Right Cheek	0.798	0.326	1.125	N/A	N/A
	Right Tilt 15 Degree	0.583	0.211	0.794	N/A	N/A
Body-Worn	Front Side	0.607	0.079	0.686	N/A	N/A
	Back Side	0.748	0.130	0.878	N/A	N/A
Hotspot	Front Side	0.607	0.079	0.686	N/A	N/A
	Back Side	0.748	0.130	0.878	N/A	N/A
	Left Side	0.530	N/A	0.530	N/A	N/A
	Right Side	0.357	0.031	0.388	N/A	N/A
	Top Side	N/A	0.045	0.045	N/A	N/A
	Bottom Side	0.273	N/A	0.273	N/A	N/A

NOTE: 1-g SAR Simultaneous Tx Combination of GSM1900 and WLAN 2.4G.

Test Position		Scaled SAR _{MAX}		Σ 1-g SAR (W/Kg)	SPLSR	Remark
		WCDMA Band 2	WLAN 2.4G			
Head	Left Cheek	0.902	0.403	1.305	N/A	N/A
	Left Tilt 15 Degree	0.490	0.285	0.775	N/A	N/A
	Right Cheek	0.791	0.326	1.117	N/A	N/A
	Right Tilt 15 Degree	0.393	0.211	0.604	N/A	N/A
Body-Worn	Front Side	0.533	0.079	0.613	N/A	N/A

	Back Side	0.700	0.130	0.830	N/A	N/A
Hotspot	Front Side	0.533	0.079	0.613	N/A	N/A
	Back Side	0.700	0.130	0.830	N/A	N/A
	Left Side	0.560	N/A	0.560	N/A	N/A
	Right Side	0.331	0.031	0.362	N/A	N/A
	Top Side	N/A	0.045	0.045	N/A	N/A
	Bottom Side	0.266	N/A	0.266	N/A	N/A

NOTE: 1-g SAR Simultaneous Tx Combination of WCDMA Band 2 and WLAN 2.4G.

Test Position		Scaled SAR _{MAX}		Σ 1-g SAR (W/Kg)	SPLSR	Remark
		WCDMA Band 4	WLAN 2.4G			
Head	Left Cheek	0.749	0.403	1.152	N/A	N/A
	Left Tilt 15 Degree	0.394	0.285	0.678	N/A	N/A
	Right Cheek	0.684	0.326	1.010	N/A	N/A
	Right Tilt 15 Degree	0.336	0.211	0.547	N/A	N/A
Body-Worn	Front Side	0.355	0.079	0.435	N/A	N/A
	Back Side	0.465	0.130	0.595	N/A	N/A
Hotspot	Front Side	0.355	0.079	0.435	N/A	N/A
	Back Side	0.465	0.130	0.595	N/A	N/A
	Left Side	0.368	N/A	0.368	N/A	N/A
	Right Side	0.229	0.031	0.259	N/A	N/A
	Top Side	N/A	0.045	0.045	N/A	N/A
	Bottom Side	0.173	N/A	0.173	N/A	N/A

NOTE: 1-g SAR Simultaneous Tx Combination of WCDMA Band 4 and WLAN 2.4G.

Test Position		Scaled SAR _{MAX}		Σ 1-g SAR (W/Kg)	SPLSR	Remark
		WCDMA Band 5	WLAN 2.4G			
Head	Left Cheek	0.739	0.403	1.142	N/A	N/A
	Left Tilt 15 Degree	0.408	0.285	0.692	N/A	N/A
	Right Cheek	0.634	0.326	0.961	N/A	N/A
	Right Tilt 15 Degree	0.315	0.211	0.526	N/A	N/A
Body-Worn	Front Side	0.708	0.079	0.788	N/A	N/A
	Back Side	0.929	0.130	1.059	N/A	N/A
Hotspot	Front Side	0.708	0.079	0.788	N/A	N/A
	Back Side	0.929	0.130	1.059	N/A	N/A
	Left Side	0.724	N/A	0.724	N/A	N/A
	Right Side	0.410	0.031	0.441	N/A	N/A
	Top Side	N/A	0.045	0.045	N/A	N/A

	Bottom Side	0.313	N/A	0.313	N/A	N/A
--	-------------	-------	-----	-------	-----	-----

NOTE: 1-g SAR Simultaneous Tx Combination of WCDMA Band 5 and WLAN 2.4G.

Test Position		Scaled SAR _{MAX}		Σ 1-g SAR (W/Kg)	SPLSR	Remark
		LTE Band 2	WLAN 2.4G			
Head	Left Cheek	0.797	0.403	1.200	N/A	N/A
	Left Tilt 15 Degree	0.493	0.285	0.778	N/A	N/A
	Right Cheek	0.754	0.326	1.080	N/A	N/A
	Right Tilt 15 Degree	0.353	0.211	0.564	N/A	N/A
Body-Worn	Front Side	0.770	0.079	0.850	N/A	N/A
	Back Side	1.188	0.130	1.319	N/A	N/A
Hotspot	Front Side	0.770	0.079	0.850	N/A	N/A
	Back Side	1.188	0.130	1.319	N/A	N/A
	Left Side	0.703	N/A	0.703	N/A	N/A
	Right Side	0.543	0.031	0.574	N/A	N/A
	Top Side	N/A	0.045	0.045	N/A	N/A
	Bottom Side	0.483	N/A	0.483	N/A	N/A

NOTE: 1-g SAR Simultaneous Tx Combination of LTE Band 2 and WLAN 2.4G.

Test Position		Scaled SAR _{MAX}		Σ 1-g SAR (W/Kg)	SPLSR	Remark
		LTE Band 4	WLAN 2.4G			
Head	Left Cheek	0.708	0.403	1.111	N/A	N/A
	Left Tilt 15 Degree	0.365	0.285	0.649	N/A	N/A
	Right Cheek	0.657	0.326	0.983	N/A	N/A
	Right Tilt 15 Degree	0.297	0.211	0.508	N/A	N/A
Body-Worn	Front Side	0.347	0.079	0.426	N/A	N/A
	Back Side	0.415	0.130	0.546	N/A	N/A
Hotspot	Front Side	0.347	0.079	0.426	N/A	N/A
	Back Side	0.415	0.130	0.546	N/A	N/A
	Left Side	0.298	N/A	0.298	N/A	N/A
	Right Side	0.179	0.031	0.210	N/A	N/A
	Top Side	N/A	0.045	0.045	N/A	N/A
	Bottom Side	0.141	N/A	0.141	N/A	N/A

NOTE: 1-g SAR Simultaneous Tx Combination of LTE Band 4 and WLAN 2.4G.

Test Position		Scaled SAR _{MAX}		Σ 1-g SAR (W/Kg)	SPLSR	Remark
		LTE Band 5	WLAN 2.4G			
Head	Left Cheek	0.780	0.403	1.183	N/A	N/A
	Left Tilt 15 Degree	0.400	0.285	0.685	N/A	N/A

	Right Cheek	0.687	0.326	1.014	N/A	N/A
	Right Tilt 15 Degree	0.331	0.211	0.542	N/A	N/A
Body-Worn	Front Side	0.790	0.079	0.870	N/A	N/A
	Back Side	0.979	0.130	1.110	N/A	N/A
Hotspot	Front Side	0.790	0.079	0.870	N/A	N/A
	Back Side	0.979	0.130	1.110	N/A	N/A
	Left Side	0.751	N/A	0.751	N/A	N/A
	Right Side	0.443	0.031	0.474	N/A	N/A
	Top Side	N/A	0.045	0.045	N/A	N/A
	Bottom Side	0.371	N/A	0.371	N/A	N/A

NOTE: 1-g SAR Simultaneous Tx Combination of LTE Band 5 and WLAN 2.4G.

Test Position		Scaled SAR _{MAX}		Σ 1-g SAR (W/Kg)	SPLSR	Remark
		LTE Band 7	WLAN 2.4G			
Head	Left Cheek	1.194	0.403	1.597	N/A	N/A
	Left Tilt 15 Degree	0.666	0.285	0.951	N/A	N/A
	Right Cheek	0.793	0.326	1.119	N/A	N/A
	Right Tilt 15 Degree	0.592	0.211	0.803	N/A	N/A
Body-Worn	Front Side	0.618	0.079	0.697	N/A	N/A
	Back Side	0.798	0.130	0.929	N/A	N/A
Hotspot	Front Side	0.618	0.079	0.697	N/A	N/A
	Back Side	0.798	0.130	0.929	N/A	N/A
	Left Side	0.623	N/A	0.623	N/A	N/A
	Right Side	0.383	0.031	0.414	N/A	N/A
	Top Side	N/A	0.045	0.045	N/A	N/A
	Bottom Side	0.287	N/A	0.287	N/A	N/A

NOTE: 1-g SAR Simultaneous Tx Combination of LTE Band 7 and WLAN 2.4G.

Test Position		Scaled SAR _{MAX}		Σ 1-g SAR (W/Kg)	SPLSR	Remark
		LTE Band 12	WLAN 2.4G			
Head	Left Cheek	0.541	0.403	0.944	N/A	N/A
	Left Tilt 15 Degree	0.309	0.285	0.594	N/A	N/A
	Right Cheek	0.513	0.326	0.839	N/A	N/A
	Right Tilt 15 Degree	0.260	0.211	0.471	N/A	N/A
Body-Worn	Front Side	0.595	0.079	0.675	N/A	N/A
	Back Side	0.786	0.130	0.916	N/A	N/A
Hotspot	Front Side	0.595	0.079	0.675	N/A	N/A
	Back Side	0.786	0.130	0.916	N/A	N/A

	Left Side	0.573	N/A	0.573	N/A	N/A
	Right Side	0.348	0.031	0.379	N/A	N/A
	Top Side	N/A	0.045	0.045	N/A	N/A
	Bottom Side	0.298	N/A	0.298	N/A	N/A

NOTE: 1-g SAR Simultaneous Tx Combination of LTE Band 12 and WLAN 2.4G.

Test Position		Scaled SAR _{MAX}		Σ 1-g SAR (W/Kg)	SPLSR	Remark
		LTE Band 17	WLAN 2.4G			
Head	Left Cheek	0.421	0.403	0.824	N/A	N/A
	Left Tilt 15 Degree	0.242	0.285	0.526	N/A	N/A
	Right Cheek	0.390	0.326	0.716	N/A	N/A
	Right Tilt 15 Degree	0.192	0.211	0.403	N/A	N/A
Body-Worn	Front Side	0.544	0.079	0.624	N/A	N/A
	Back Side	0.672	0.130	0.803	N/A	N/A
Hotspot	Front Side	0.544	0.079	0.624	N/A	N/A
	Back Side	0.672	0.130	0.803	N/A	N/A
	Left Side	0.531	N/A	0.531	N/A	N/A
	Right Side	0.294	0.031	0.325	N/A	N/A
	Top Side	N/A	0.045	0.045	N/A	N/A
	Bottom Side	0.266	N/A	0.266	N/A	N/A

NOTE: 1-g SAR Simultaneous Tx Combination of LTE Band 17 and WLAN 2.4G.

Test Position		Scaled SAR _{MAX}		Σ 1-g SAR (W/Kg)	SPLSR	Remark
		GSM 850	Bluetooth			
Head	Left Cheek	1.129	0.265	1.394	N/A	N/A
	Left Tilt 15 Degree	0.548	0.265	0.813	N/A	N/A
	Right Cheek	0.783	0.265	1.048	N/A	N/A
	Right Tilt 15 Degree	0.532	0.265	0.797	N/A	N/A
Body-Worn	Front Side	0.714	0.132	0.846	N/A	N/A
	Back Side	1.121	0.132	1.253	N/A	N/A
Hotspot	Front Side	0.714	0.132	0.846	N/A	N/A
	Back Side	1.121	0.132	1.253	N/A	N/A
	Left Side	0.783	N/A	0.783	N/A	N/A
	Right Side	0.499	0.132	0.632	N/A	N/A
	Top Side	N/A	0.132	0.132	N/A	N/A
	Bottom Side	0.406	N/A	0.406	N/A	N/A

NOTE: 1-g SAR Simultaneous Tx Combination of GSM850 and Bluetooth.

Test Position		Scaled SAR _{MAX}		Σ 1-g SAR (W/Kg)	SPLSR	Remark
		GSM 1900	Bluetooth			
Head	Left Cheek	1.183	0.265	1.448	N/A	N/A
	Left Tilt 15 Degree	0.702	0.265	0.967	N/A	N/A
	Right Cheek	0.798	0.265	1.063	N/A	N/A
	Right Tilt 15 Degree	0.583	0.265	0.848	N/A	N/A
Body-Worn	Front Side	0.607	0.132	0.739	N/A	N/A
	Back Side	0.748	0.132	0.880	N/A	N/A
Hotspot	Front Side	0.607	0.132	0.739	N/A	N/A
	Back Side	0.748	0.132	0.880	N/A	N/A
	Left Side	0.530	N/A	0.530	N/A	N/A
	Right Side	0.357	0.132	0.490	N/A	N/A
	Top Side	N/A	0.132	0.132	N/A	N/A
	Bottom Side	0.273	N/A	0.273	N/A	N/A

NOTE: 1-g SAR Simultaneous Tx Combination of GSM1900 and Bluetooth.

Test Position		Scaled SAR _{MAX}		Σ 1-g SAR (W/Kg)	SPLSR	Remark
		WCDMA Band 2	Bluetooth			
Head	Left Cheek	0.902	0.265	1.167	N/A	N/A
	Left Tilt 15 Degree	0.490	0.265	0.755	N/A	N/A
	Right Cheek	0.791	0.265	1.056	N/A	N/A
	Right Tilt 15 Degree	0.393	0.265	0.658	N/A	N/A
Body-Worn	Front Side	0.533	0.132	0.666	N/A	N/A
	Back Side	0.700	0.132	0.832	N/A	N/A
Hotspot	Front Side	0.533	0.132	0.666	N/A	N/A
	Back Side	0.700	0.132	0.832	N/A	N/A
	Left Side	0.560	N/A	0.560	N/A	N/A
	Right Side	0.331	0.132	0.464	N/A	N/A
	Top Side	N/A	0.132	0.132	N/A	N/A
	Bottom Side	0.266	N/A	0.266	N/A	N/A

NOTE: 1-g SAR Simultaneous Tx Combination of WCDMA Band 2 and Bluetooth.

Test Position		Scaled SAR _{MAX}		Σ 1-g SAR (W/Kg)	SPLSR	Remark
		WCDMA Band 4	Bluetooth			
Head	Left Cheek	0.749	0.265	1.014	N/A	N/A
	Left Tilt 15 Degree	0.394	0.265	0.659	N/A	N/A
	Right Cheek	0.684	0.265	0.949	N/A	N/A

	Right Tilt 15 Degree	0.336	0.265	0.601	N/A	N/A
Body-Worn	Front Side	0.355	0.132	0.488	N/A	N/A
	Back Side	0.465	0.132	0.597	N/A	N/A
Hotspot	Front Side	0.355	0.132	0.488	N/A	N/A
	Back Side	0.465	0.132	0.597	N/A	N/A
	Left Side	0.368	N/A	0.368	N/A	N/A
	Right Side	0.229	0.132	0.361	N/A	N/A
	Top Side	N/A	0.132	0.132	N/A	N/A
	Bottom Side	0.173	N/A	0.173	N/A	N/A

NOTE: 1-g SAR Simultaneous Tx Combination of WCDMA Band 4 and Bluetooth.

Test Position		Scaled SAR _{MAX}		Σ 1-g SAR (W/Kg)	SPLSR	Remark
		WCDMA Band 5	Bluetooth			
Head	Left Cheek	0.739	0.265	1.004	N/A	N/A
	Left Tilt 15 Degree	0.408	0.265	0.673	N/A	N/A
	Right Cheek	0.634	0.265	0.899	N/A	N/A
	Right Tilt 15 Degree	0.315	0.265	0.580	N/A	N/A
Body-Worn	Front Side	0.708	0.132	0.841	N/A	N/A
	Back Side	0.929	0.132	1.061	N/A	N/A
Hotspot	Front Side	0.708	0.132	0.841	N/A	N/A
	Back Side	0.929	0.132	1.061	N/A	N/A
	Left Side	0.724	N/A	0.724	N/A	N/A
	Right Side	0.410	0.132	0.543	N/A	N/A
	Top Side	N/A	0.132	0.132	N/A	N/A
	Bottom Side	0.313	N/A	0.313	N/A	N/A

NOTE: 1-g SAR Simultaneous Tx Combination of WCDMA Band 5 and Bluetooth.

Test Position		Scaled SAR _{MAX}		Σ 1-g SAR (W/Kg)	SPLSR	Remark
		LTE Band 2	Bluetooth			
Head	Left Cheek	0.797	0.265	1.062	N/A	N/A
	Left Tilt 15 Degree	0.493	0.265	0.758	N/A	N/A
	Right Cheek	0.754	0.265	1.019	N/A	N/A
	Right Tilt 15 Degree	0.353	0.265	0.618	N/A	N/A
Body-Worn	Front Side	0.770	0.132	0.903	N/A	N/A
	Back Side	1.188	0.132	1.321	N/A	N/A
Hotspot	Front Side	0.770	0.132	0.903	N/A	N/A
	Back Side	1.188	0.132	1.321	N/A	N/A
	Left Side	0.703	N/A	0.703	N/A	N/A

	Right Side	0.543	0.132	0.675	N/A	N/A
	Top Side	N/A	0.132	0.132	N/A	N/A
	Bottom Side	0.483	N/A	0.483	N/A	N/A

NOTE: 1-g SAR Simultaneous Tx Combination of LTE Band 2 and Bluetooth.

Test Position		Scaled SAR _{MAX}		Σ 1-g SAR (W/Kg)	SPLSR	Remark
		LTE Band 4	Bluetooth			
Head	Left Cheek	0.708	0.265	0.973	N/A	N/A
	Left Tilt 15 Degree	0.365	0.265	0.630	N/A	N/A
	Right Cheek	0.657	0.265	0.922	N/A	N/A
	Right Tilt 15 Degree	0.297	0.265	0.561	N/A	N/A
Body-Worn	Front Side	0.347	0.132	0.479	N/A	N/A
	Back Side	0.415	0.132	0.548	N/A	N/A
Hotspot	Front Side	0.347	0.132	0.479	N/A	N/A
	Back Side	0.415	0.132	0.548	N/A	N/A
	Left Side	0.298	N/A	0.298	N/A	N/A
	Right Side	0.179	0.132	0.312	N/A	N/A
	Top Side	N/A	0.132	0.132	N/A	N/A
	Bottom Side	0.141	N/A	0.141	N/A	N/A

NOTE: 1-g SAR Simultaneous Tx Combination of LTE Band 4 and Bluetooth.

Test Position		Scaled SAR _{MAX}		Σ 1-g SAR (W/Kg)	SPLSR	Remark
		LTE Band 5	Bluetooth			
Head	Left Cheek	0.780	0.265	1.045	N/A	N/A
	Left Tilt 15 Degree	0.400	0.265	0.665	N/A	N/A
	Right Cheek	0.687	0.265	0.952	N/A	N/A
	Right Tilt 15 Degree	0.331	0.265	0.596	N/A	N/A
Body-Worn	Front Side	0.790	0.132	0.923	N/A	N/A
	Back Side	0.979	0.132	1.112	N/A	N/A
Hotspot	Front Side	0.790	0.132	0.923	N/A	N/A
	Back Side	0.979	0.132	1.112	N/A	N/A
	Left Side	0.751	N/A	0.751	N/A	N/A
	Right Side	0.443	0.132	0.575	N/A	N/A
	Top Side	N/A	0.132	0.132	N/A	N/A
	Bottom Side	0.371	N/A	0.371	N/A	N/A

NOTE: 1-g SAR Simultaneous Tx Combination of LTE Band 5 and Bluetooth.

Test Position	Scaled SAR _{MAX}		Σ 1-g SAR	SPLSR	Remark
---------------	---------------------------	--	-----------	-------	--------

		LTE Band 7	Bluetooth	(W/Kg)		
Head	Left Cheek	1.194	0.265	1.459	N/A	N/A
	Left Tilt 15 Degree	0.666	0.265	0.931	N/A	N/A
	Right Cheek	0.793	0.265	1.058	N/A	N/A
	Right Tilt 15 Degree	0.592	0.265	0.857	N/A	N/A
Body-Worn	Front Side	0.618	0.132	0.750	N/A	N/A
	Back Side	0.798	0.132	0.931	N/A	N/A
Hotspot	Front Side	0.618	0.132	0.750	N/A	N/A
	Back Side	0.798	0.132	0.931	N/A	N/A
	Left Side	0.623	N/A	0.623	N/A	N/A
	Right Side	0.383	0.132	0.515	N/A	N/A
	Top Side	N/A	0.132	0.132	N/A	N/A
	Bottom Side	0.287	N/A	0.287	N/A	N/A

NOTE: 1-g SAR Simultaneous Tx Combination of LTE Band 7 and Bluetooth.

Test Position		Scaled SAR _{MAX}		Σ 1-g SAR (W/Kg)	SPLSR	Remark
		LTE Band 12	Bluetooth			
Head	Left Cheek	0.541	0.265	0.806	N/A	N/A
	Left Tilt 15 Degree	0.309	0.265	0.574	N/A	N/A
	Right Cheek	0.513	0.265	0.777	N/A	N/A
	Right Tilt 15 Degree	0.260	0.265	0.525	N/A	N/A
Body-Worn	Front Side	0.595	0.132	0.728	N/A	N/A
	Back Side	0.786	0.132	0.918	N/A	N/A
Hotspot	Front Side	0.595	0.132	0.728	N/A	N/A
	Back Side	0.786	0.132	0.918	N/A	N/A
	Left Side	0.573	N/A	0.573	N/A	N/A
	Right Side	0.348	0.132	0.481	N/A	N/A
	Top Side	N/A	0.132	0.132	N/A	N/A
	Bottom Side	0.298	N/A	0.298	N/A	N/A

NOTE: 1-g SAR Simultaneous Tx Combination of LTE Band 12 and Bluetooth.

Test Position		Scaled SAR _{MAX}		Σ 1-g SAR (W/Kg)	SPLSR	Remark
		LTE Band 17	Bluetooth			
Head	Left Cheek	0.421	0.265	0.686	N/A	N/A
	Left Tilt 15 Degree	0.242	0.265	0.507	N/A	N/A
	Right Cheek	0.390	0.265	0.655	N/A	N/A
	Right Tilt 15	0.192	0.265	0.457	N/A	N/A

	Degree					
Body-Worn	Front Side	0.544	0.132	0.677	N/A	N/A
	Back Side	0.672	0.132	0.805	N/A	N/A
Hotspot	Front Side	0.544	0.132	0.677	N/A	N/A
	Back Side	0.672	0.132	0.805	N/A	N/A
	Left Side	0.531	N/A	0.531	N/A	N/A
	Right Side	0.294	0.132	0.426	N/A	N/A
	Top Side	N/A	0.132	0.132	N/A	N/A
	Bottom Side	0.266	N/A	0.266	N/A	N/A

NOTE: 1-g SAR Simultaneous Tx Combination of LTE Band 17 and Bluetooth.

Test Position		Scaled SAR _{MAX}		Σ 1-g SAR (W/Kg)	SPLSR	Remark
		GSM 850	WLAN 5.2G			
Head	Left Cheek	1.129	0.305	1.434	N/A	N/A
	Left Tilt 15 Degree	0.548	0.179	0.727	N/A	N/A
	Right Cheek	0.783	0.284	1.067	N/A	N/A
	Right Tilt 15 Degree	0.532	0.150	0.683	N/A	N/A
Body-Worn	Front Side	0.714	0.143	0.857	N/A	N/A
	Back Side	1.121	0.235	1.356	N/A	N/A
Hotspot	Front Side	0.714	0.143	0.857	N/A	N/A
	Back Side	1.121	0.235	1.356	N/A	N/A
	Left Side	0.783	N/A	0.783	N/A	N/A
	Right Side	0.499	0.048	0.547	N/A	N/A
	Top Side	N/A	0.072	0.072	N/A	N/A
	Bottom Side	0.406	N/A	0.406	N/A	N/A

NOTE: 1-g SAR Simultaneous Tx Combination of GSM850 and WLAN 5.2G.

Test Position		Scaled SAR _{MAX}		Σ 1-g SAR (W/Kg)	SPLSR	Remark
		GSM 1900	WLAN 5.2G			
Head	Left Cheek	1.183	0.305	1.488	N/A	N/A
	Left Tilt 15 Degree	0.702	0.179	0.881	N/A	N/A
	Right Cheek	0.798	0.284	1.082	N/A	N/A
	Right Tilt 15 Degree	0.583	0.150	0.734	N/A	N/A
Body-Worn	Front Side	0.607	0.143	0.750	N/A	N/A
	Back Side	0.748	0.235	0.983	N/A	N/A
Hotspot	Front Side	0.607	0.143	0.750	N/A	N/A
	Back Side	0.748	0.235	0.983	N/A	N/A
	Left Side	0.530	N/A	0.530	N/A	N/A
	Right Side	0.357	0.048	0.405	N/A	N/A

	Top Side	N/A	0.072	0.072	N/A	N/A
	Bottom Side	0.273	N/A	0.273	N/A	N/A

NOTE: 1-g SAR Simultaneous Tx Combination of GSM1900 and WLAN 5.2G.

Test Position		Scaled SAR _{MAX}		Σ 1-g SAR (W/Kg)	SPLSR	Remark
		WCDMA Band 2	WLAN 5.2G			
Head	Left Cheek	0.902	0.305	1.207	N/A	N/A
	Left Tilt 15 Degree	0.490	0.179	0.669	N/A	N/A
	Right Cheek	0.791	0.284	1.075	N/A	N/A
	Right Tilt 15 Degree	0.393	0.150	0.544	N/A	N/A
Body-Worn	Front Side	0.533	0.143	0.677	N/A	N/A
	Back Side	0.700	0.235	0.934	N/A	N/A
Hotspot	Front Side	0.533	0.143	0.677	N/A	N/A
	Back Side	0.700	0.235	0.934	N/A	N/A
	Left Side	0.560	N/A	0.560	N/A	N/A
	Right Side	0.331	0.048	0.379	N/A	N/A
	Top Side	N/A	0.072	0.072	N/A	N/A
	Bottom Side	0.266	N/A	0.266	N/A	N/A

NOTE: 1-g SAR Simultaneous Tx Combination of WCDMA Band 2 and WLAN 5.2G.

Test Position		Scaled SAR _{MAX}		Σ 1-g SAR (W/Kg)	SPLSR	Remark
		WCDMA Band 4	WLAN 5.2G			
Head	Left Cheek	0.749	0.305	1.054	N/A	N/A
	Left Tilt 15 Degree	0.394	0.179	0.572	N/A	N/A
	Right Cheek	0.684	0.284	0.968	N/A	N/A
	Right Tilt 15 Degree	0.336	0.150	0.486	N/A	N/A
Body-Worn	Front Side	0.355	0.143	0.499	N/A	N/A
	Back Side	0.465	0.235	0.700	N/A	N/A
Hotspot	Front Side	0.355	0.143	0.499	N/A	N/A
	Back Side	0.465	0.235	0.700	N/A	N/A
	Left Side	0.368	N/A	0.368	N/A	N/A
	Right Side	0.229	0.048	0.276	N/A	N/A
	Top Side	N/A	0.072	0.072	N/A	N/A
	Bottom Side	0.173	N/A	0.173	N/A	N/A

NOTE: 1-g SAR Simultaneous Tx Combination of WCDMA Band 4 and WLAN 5.2G.

Test Position		Scaled SAR _{MAX}		Σ 1-g SAR (W/Kg)	SPLSR	Remark
		WCDMA	WLAN 5.2G			

		Band 5				
Head	Left Cheek	0.739	0.305	1.044	N/A	N/A
	Left Tilt 15 Degree	0.408	0.179	0.586	N/A	N/A
	Right Cheek	0.634	0.284	0.918	N/A	N/A
	Right Tilt 15 Degree	0.315	0.150	0.465	N/A	N/A
Body-Worn	Front Side	0.708	0.143	0.852	N/A	N/A
	Back Side	0.929	0.235	1.164	N/A	N/A
Hotspot	Front Side	0.708	0.143	0.852	N/A	N/A
	Back Side	0.929	0.235	1.164	N/A	N/A
	Left Side	0.724	N/A	0.724	N/A	N/A
	Right Side	0.410	0.048	0.458	N/A	N/A
	Top Side	N/A	0.072	0.072	N/A	N/A
	Bottom Side	0.313	N/A	0.313	N/A	N/A

NOTE: 1-g SAR Simultaneous Tx Combination of WCDMA Band 5 and WLAN 5.2G.

Test Position		Scaled SAR _{MAX}		Σ 1-g SAR (W/Kg)	SPLSR	Remark
		LTE Band 2	WLAN 5.2G			
Head	Left Cheek	0.797	0.305	1.102	N/A	N/A
	Left Tilt 15 Degree	0.493	0.179	0.672	N/A	N/A
	Right Cheek	0.754	0.284	1.038	N/A	N/A
	Right Tilt 15 Degree	0.353	0.150	0.504	N/A	N/A
Body-Worn	Front Side	0.770	0.143	0.914	N/A	N/A
	Back Side	1.188	0.235	1.423	N/A	N/A
Hotspot	Front Side	0.770	0.143	0.914	N/A	N/A
	Back Side	1.188	0.235	1.423	N/A	N/A
	Left Side	0.703	N/A	0.703	N/A	N/A
	Right Side	0.543	0.048	0.591	N/A	N/A
	Top Side	N/A	0.072	0.072	N/A	N/A
	Bottom Side	0.483	N/A	0.483	N/A	N/A

NOTE: 1-g SAR Simultaneous Tx Combination of LTE Band 2 and WLAN 5.2G.

Test Position		Scaled SAR _{MAX}		Σ 1-g SAR (W/Kg)	SPLSR	Remark
		LTE Band 4	WLAN 5.2G			
Head	Left Cheek	0.708	0.305	1.013	N/A	N/A
	Left Tilt 15 Degree	0.365	0.179	0.543	N/A	N/A
	Right Cheek	0.657	0.284	0.941	N/A	N/A
	Right Tilt 15 Degree	0.297	0.150	0.447	N/A	N/A
Body-Worn	Front Side	0.347	0.143	0.490	N/A	N/A

	Back Side	0.415	0.235	0.650	N/A	N/A
Hotspot	Front Side	0.347	0.143	0.490	N/A	N/A
	Back Side	0.415	0.235	0.650	N/A	N/A
	Left Side	0.298	N/A	0.298	N/A	N/A
	Right Side	0.179	0.048	0.227	N/A	N/A
	Top Side	N/A	0.072	0.072	N/A	N/A
	Bottom Side	0.141	N/A	0.141	N/A	N/A

NOTE: 1-g SAR Simultaneous Tx Combination of LTE Band 4 and WLAN 5.2G.

Test Position		Scaled SAR _{MAX}		Σ 1-g SAR (W/Kg)	SPLSR	Remark
		LTE Band 5	WLAN 5.2G			
Head	Left Cheek	0.780	0.305	1.085	N/A	N/A
	Left Tilt 15 Degree	0.400	0.179	0.579	N/A	N/A
	Right Cheek	0.687	0.284	0.971	N/A	N/A
	Right Tilt 15 Degree	0.331	0.150	0.481	N/A	N/A
Body-Worn	Front Side	0.790	0.143	0.934	N/A	N/A
	Back Side	0.979	0.235	1.214	N/A	N/A
Hotspot	Front Side	0.790	0.143	0.934	N/A	N/A
	Back Side	0.979	0.235	1.214	N/A	N/A
	Left Side	0.751	N/A	0.751	N/A	N/A
	Right Side	0.443	0.048	0.491	N/A	N/A
	Top Side	N/A	0.072	0.072	N/A	N/A
	Bottom Side	0.371	N/A	0.371	N/A	N/A

NOTE: 1-g SAR Simultaneous Tx Combination of LTE Band 5 and WLAN 5.2G.

Test Position		Scaled SAR _{MAX}		Σ 1-g SAR (W/Kg)	SPLSR	Remark
		LTE Band 7	WLAN 5.2G			
Head	Left Cheek	1.194	0.305	1.499	N/A	N/A
	Left Tilt 15 Degree	0.666	0.179	0.845	N/A	N/A
	Right Cheek	0.793	0.284	1.077	N/A	N/A
	Right Tilt 15 Degree	0.592	0.150	0.742	N/A	N/A
Body-Worn	Front Side	0.618	0.143	0.761	N/A	N/A
	Back Side	0.798	0.235	1.033	N/A	N/A
Hotspot	Front Side	0.618	0.143	0.761	N/A	N/A
	Back Side	0.798	0.235	1.033	N/A	N/A
	Left Side	0.623	N/A	0.623	N/A	N/A
	Right Side	0.383	0.048	0.431	N/A	N/A

	Top Side	N/A	0.072	0.072	N/A	N/A
	Bottom Side	0.287	N/A	0.287	N/A	N/A

NOTE: 1-g SAR Simultaneous Tx Combination of LTE Band 7 and WLAN 5.2G.

Test Position		Scaled SAR _{MAX}		Σ 1-g SAR (W/Kg)	SPLSR	Remark
		LTE Band 12	WLAN 5.2G			
Head	Left Cheek	0.541	0.305	0.846	N/A	N/A
	Left Tilt 15 Degree	0.309	0.179	0.488	N/A	N/A
	Right Cheek	0.513	0.284	0.797	N/A	N/A
	Right Tilt 15 Degree	0.260	0.150	0.411	N/A	N/A
Body-Worn	Front Side	0.595	0.143	0.739	N/A	N/A
	Back Side	0.786	0.235	1.020	N/A	N/A
Hotspot	Front Side	0.595	0.143	0.739	N/A	N/A
	Back Side	0.786	0.235	1.020	N/A	N/A
	Left Side	0.573	N/A	0.573	N/A	N/A
	Right Side	0.348	0.048	0.396	N/A	N/A
	Top Side	N/A	0.072	0.072	N/A	N/A
	Bottom Side	0.298	N/A	0.298	N/A	N/A

NOTE: 1-g SAR Simultaneous Tx Combination of LTE Band 12 and WLAN 5.2G.

Test Position		Scaled SAR _{MAX}		Σ 1-g SAR (W/Kg)	SPLSR	Remark
		LTE Band 17	WLAN 5.2G			
Head	Left Cheek	0.421	0.305	0.726	N/A	N/A
	Left Tilt 15 Degree	0.242	0.179	0.420	N/A	N/A
	Right Cheek	0.390	0.284	0.674	N/A	N/A
	Right Tilt 15 Degree	0.192	0.150	0.343	N/A	N/A
Body-Worn	Front Side	0.544	0.143	0.688	N/A	N/A
	Back Side	0.672	0.235	0.907	N/A	N/A
Hotspot	Front Side	0.544	0.143	0.688	N/A	N/A
	Back Side	0.672	0.235	0.907	N/A	N/A
	Left Side	0.531	N/A	0.531	N/A	N/A
	Right Side	0.294	0.048	0.342	N/A	N/A
	Top Side	N/A	0.072	0.072	N/A	N/A
	Bottom Side	0.266	N/A	0.266	N/A	N/A

NOTE: 1-g SAR Simultaneous Tx Combination of LTE Band 17 and WLAN 5.2G.

Test Position		Scaled SAR _{MAX}		Σ 1-g SAR (W/Kg)	SPLSR	Remark
		GSM 850	WLAN 5.8G			
Head	Left Cheek	1.129	0.396	1.525	N/A	N/A
	Left Tilt 15 Degree	0.548	0.245	0.793	N/A	N/A
	Right Cheek	0.783	0.311	1.094	N/A	N/A
	Right Tilt 15 Degree	0.532	0.210	0.743	N/A	N/A
Body-Worn	Front Side	0.714	0.222	0.936	N/A	N/A
	Back Side	1.121	0.360	1.481	N/A	N/A
Hotspot	Front Side	0.714	0.222	0.936	N/A	N/A
	Back Side	1.121	0.360	1.481	N/A	N/A
	Left Side	0.783	N/A	0.783	N/A	N/A
	Right Side	0.499	0.086	0.585	N/A	N/A
	Top Side	N/A	0.118	0.118	N/A	N/A
	Bottom Side	0.406	N/A	0.406	N/A	N/A

NOTE: 1-g SAR Simultaneous Tx Combination of GSM850 and WLAN 5.8G.

Test Position		Scaled SAR _{MAX}		Σ 1-g SAR (W/Kg)	SPLSR	Remark
		GSM 1900	WLAN 5.8G			
Head	Left Cheek	1.183	0.396	1.578	N/A	N/A
	Left Tilt 15 Degree	0.702	0.245	0.947	N/A	N/A
	Right Cheek	0.798	0.311	1.109	N/A	N/A
	Right Tilt 15 Degree	0.583	0.210	0.794	N/A	N/A
Body-Worn	Front Side	0.607	0.222	0.829	N/A	N/A
	Back Side	0.748	0.360	1.107	N/A	N/A
Hotspot	Front Side	0.607	0.222	0.829	N/A	N/A
	Back Side	0.748	0.360	1.107	N/A	N/A
	Left Side	0.530	N/A	0.530	N/A	N/A
	Right Side	0.357	0.086	0.443	N/A	N/A
	Top Side	N/A	0.118	0.118	N/A	N/A
	Bottom Side	0.273	N/A	0.273	N/A	N/A

NOTE: 1-g SAR Simultaneous Tx Combination of GSM1900 and WLAN 5.8G.

Test Position		Scaled SAR _{MAX}		Σ 1-g SAR (W/Kg)	SPLSR	Remark
		WCDMA Band 2	WLAN 5.8G			
Head	Left Cheek	0.902	0.396	1.297	N/A	N/A
	Left Tilt 15 Degree	0.490	0.245	0.735	N/A	N/A
	Right Cheek	0.791	0.311	1.102	N/A	N/A
	Right Tilt 15 Degree	0.393	0.210	0.604	N/A	N/A

Body-Worn	Front Side	0.533	0.222	0.755	N/A	N/A
	Back Side	0.700	0.360	1.059	N/A	N/A
Hotspot	Front Side	0.533	0.222	0.755	N/A	N/A
	Back Side	0.700	0.360	1.059	N/A	N/A
	Left Side	0.560	N/A	0.560	N/A	N/A
	Right Side	0.331	0.086	0.417	N/A	N/A
	Top Side	N/A	0.118	0.118	N/A	N/A
	Bottom Side	0.266	N/A	0.266	N/A	N/A

NOTE: 1-g SAR Simultaneous Tx Combination of WCDMA Band 2 and WLAN 5.8G.

Test Position		Scaled SAR _{MAX}		Σ 1-g SAR (W/Kg)	SPLSR	Remark
		WCDMA Band 4	WLAN 5.8G			
Head	Left Cheek	0.749	0.396	1.144	N/A	N/A
	Left Tilt 15 Degree	0.394	0.245	0.639	N/A	N/A
	Right Cheek	0.684	0.311	0.995	N/A	N/A
	Right Tilt 15 Degree	0.336	0.210	0.546	N/A	N/A
Body-Worn	Front Side	0.355	0.222	0.577	N/A	N/A
	Back Side	0.465	0.360	0.824	N/A	N/A
Hotspot	Front Side	0.355	0.222	0.577	N/A	N/A
	Back Side	0.465	0.360	0.824	N/A	N/A
	Left Side	0.368	N/A	0.368	N/A	N/A
	Right Side	0.229	0.086	0.314	N/A	N/A
	Top Side	N/A	0.118	0.118	N/A	N/A
	Bottom Side	0.173	N/A	0.173	N/A	N/A

NOTE: 1-g SAR Simultaneous Tx Combination of WCDMA Band 4 and WLAN 5.8G.

Test Position		Scaled SAR _{MAX}		Σ 1-g SAR (W/Kg)	SPLSR	Remark
		WCDMA Band 5	WLAN 5.8G			
Head	Left Cheek	0.739	0.396	1.135	N/A	N/A
	Left Tilt 15 Degree	0.408	0.245	0.653	N/A	N/A
	Right Cheek	0.634	0.311	0.945	N/A	N/A
	Right Tilt 15 Degree	0.315	0.210	0.525	N/A	N/A
Body-Worn	Front Side	0.708	0.222	0.930	N/A	N/A
	Back Side	0.929	0.360	1.288	N/A	N/A
Hotspot	Front Side	0.708	0.222	0.930	N/A	N/A
	Back Side	0.929	0.360	1.288	N/A	N/A
	Left Side	0.724	N/A	0.724	N/A	N/A
	Right Side	0.410	0.086	0.496	N/A	N/A

	Top Side	N/A	0.118	0.118	N/A	N/A
	Bottom Side	0.313	N/A	0.313	N/A	N/A

NOTE: 1-g SAR Simultaneous Tx Combination of WCDMA Band 5 and WLAN 5.8G.

Test Position		Scaled SAR _{MAX}		Σ 1-g SAR (W/Kg)	SPLSR	Remark
		LTE Band 2	WLAN 5.8G			
Head	Left Cheek	0.797	0.396	1.193	N/A	N/A
	Left Tilt 15 Degree	0.493	0.245	0.739	N/A	N/A
	Right Cheek	0.754	0.311	1.065	N/A	N/A
	Right Tilt 15 Degree	0.353	0.210	0.564	N/A	N/A
Body-Worn	Front Side	0.770	0.222	0.992	N/A	N/A
	Back Side	1.188	0.360	1.548	N/A	N/A
Hotspot	Front Side	0.770	0.222	0.992	N/A	N/A
	Back Side	1.188	0.360	1.548	N/A	N/A
	Left Side	0.703	N/A	0.703	N/A	N/A
	Right Side	0.543	0.086	0.628	N/A	N/A
	Top Side	N/A	0.118	0.118	N/A	N/A
	Bottom Side	0.483	N/A	0.483	N/A	N/A

NOTE: 1-g SAR Simultaneous Tx Combination of LTE Band 2 and WLAN 5.8G.

Test Position		Scaled SAR _{MAX}		Σ 1-g SAR (W/Kg)	SPLSR	Remark
		LTE Band 4	WLAN 5.8G			
Head	Left Cheek	0.708	0.396	1.103	N/A	N/A
	Left Tilt 15 Degree	0.365	0.245	0.610	N/A	N/A
	Right Cheek	0.657	0.311	0.968	N/A	N/A
	Right Tilt 15 Degree	0.297	0.210	0.507	N/A	N/A
Body-Worn	Front Side	0.347	0.222	0.569	N/A	N/A
	Back Side	0.415	0.360	0.775	N/A	N/A
Hotspot	Front Side	0.347	0.222	0.569	N/A	N/A
	Back Side	0.415	0.360	0.775	N/A	N/A
	Left Side	0.298	N/A	0.298	N/A	N/A
	Right Side	0.179	0.086	0.265	N/A	N/A
	Top Side	N/A	0.118	0.118	N/A	N/A
	Bottom Side	0.141	N/A	0.141	N/A	N/A

NOTE: 1-g SAR Simultaneous Tx Combination of LTE Band 4 and WLAN 5.8G.

Test Position		Scaled SAR _{MAX}		Σ 1-g SAR (W/Kg)	SPLSR	Remark
		LTE Band 5	WLAN 5.8G			
Head	Left Cheek	0.780	0.396	1.175	N/A	N/A

	Left Tilt 15 Degree	0.400	0.245	0.645	N/A	N/A
	Right Cheek	0.687	0.311	0.998	N/A	N/A
	Right Tilt 15 Degree	0.331	0.210	0.541	N/A	N/A
Body-Worn	Front Side	0.790	0.222	1.012	N/A	N/A
	Back Side	0.979	0.360	1.339	N/A	N/A
Hotspot	Front Side	0.790	0.222	1.012	N/A	N/A
	Back Side	0.979	0.360	1.339	N/A	N/A
	Left Side	0.751	N/A	0.751	N/A	N/A
	Right Side	0.443	0.086	0.528	N/A	N/A
	Top Side	N/A	0.118	0.118	N/A	N/A
	Bottom Side	0.371	N/A	0.371	N/A	N/A

NOTE: 1-g SAR Simultaneous Tx Combination of LTE Band 5 and WLAN 5.8G.

Test Position		Scaled SAR _{MAX}		Σ 1-g SAR (W/Kg)	SPLSR	Remark
		LTE Band 7	WLAN 5.8G			
Head	Left Cheek	1.194	0.396	1.589	N/A	N/A
	Left Tilt 15 Degree	0.666	0.245	0.911	N/A	N/A
	Right Cheek	0.793	0.311	1.104	N/A	N/A
	Right Tilt 15 Degree	0.592	0.210	0.802	N/A	N/A
Body-Worn	Front Side	0.618	0.222	0.840	N/A	N/A
	Back Side	0.798	0.360	1.158	N/A	N/A
Hotspot	Front Side	0.618	0.222	0.840	N/A	N/A
	Back Side	0.798	0.360	1.158	N/A	N/A
	Left Side	0.623	N/A	0.623	N/A	N/A
	Right Side	0.383	0.086	0.468	N/A	N/A
	Top Side	N/A	0.118	0.118	N/A	N/A
	Bottom Side	0.287	N/A	0.287	N/A	N/A

NOTE: 1-g SAR Simultaneous Tx Combination of LTE Band 7 and WLAN 5.8G.

Test Position		Scaled SAR _{MAX}		Σ 1-g SAR (W/Kg)	SPLSR	Remark
		LTE Band 12	WLAN 5.8G			
Head	Left Cheek	0.541	0.396	0.936	N/A	N/A
	Left Tilt 15 Degree	0.309	0.245	0.554	N/A	N/A
	Right Cheek	0.513	0.311	0.823	N/A	N/A
	Right Tilt 15 Degree	0.260	0.210	0.471	N/A	N/A
Body-Worn	Front Side	0.595	0.222	0.817	N/A	N/A
	Back Side	0.786	0.360	1.145	N/A	N/A

Hotspot	Front Side	0.595	0.222	0.817	N/A	N/A
	Back Side	0.786	0.360	1.145	N/A	N/A
	Left Side	0.573	N/A	0.573	N/A	N/A
	Right Side	0.348	0.086	0.434	N/A	N/A
	Top Side	N/A	0.118	0.118	N/A	N/A
	Bottom Side	0.298	N/A	0.298	N/A	N/A

NOTE: 1-g SAR Simultaneous Tx Combination of LTE Band 12 and WLAN 5.8G.

Test Position		Scaled SAR _{MAX}		Σ 1-g SAR (W/Kg)	SPLSR	Remark
		LTE Band 17	WLAN 5.8G			
Head	Left Cheek	0.421	0.396	0.817	N/A	N/A
	Left Tilt 15 Degree	0.242	0.245	0.487	N/A	N/A
	Right Cheek	0.390	0.311	0.701	N/A	N/A
	Right Tilt 15 Degree	0.192	0.210	0.403	N/A	N/A
Body-Worn	Front Side	0.544	0.222	0.766	N/A	N/A
	Back Side	0.672	0.360	1.032	N/A	N/A
Hotspot	Front Side	0.544	0.222	0.766	N/A	N/A
	Back Side	0.672	0.360	1.032	N/A	N/A
	Left Side	0.531	N/A	0.531	N/A	N/A
	Right Side	0.294	0.086	0.380	N/A	N/A
	Top Side	N/A	0.118	0.118	N/A	N/A
	Bottom Side	0.266	N/A	0.266	N/A	N/A

NOTE: 1-g SAR Simultaneous Tx Combination of LTE Band 17 and WLAN 5.8G.

11. Appendix A. Photo documentation

Refer to appendix Test Setup photo---SAR

12. Appendix B. System Check Plots

Table of contents
MEASUREMENT 1 System Performance Check - SID750 - Head
MEASUREMENT 2 System Performance Check - SID750 - Body
MEASUREMENT 3 System Performance Check - SID835 - Head
MEASUREMENT 4 System Performance Check - SID835 - Body
MEASUREMENT 5 System Performance Check - SID1800 - Head
MEASUREMENT 6 System Performance Check - SID1800 - Body
MEASUREMENT 7 System Performance Check - SID1900 - Head
MEASUREMENT 8 System Performance Check - SID1900 - Body
MEASUREMENT 9 System Performance Check - SID2450 - Head
MEASUREMENT 10 System Performance Check - SID2450 - Body
MEASUREMENT 11 System Performance Check - SID2600 - Head
MEASUREMENT 12 System Performance Check - SID2600 - Body
MEASUREMENT 13 System Performance Check - SID5200 - Head
MEASUREMENT 14 System Performance Check - SID5200 - Body
MEASUREMENT 15 System Performance Check - SID5800 - Head
MEASUREMENT 16 System Performance Check - SID5800 - Body

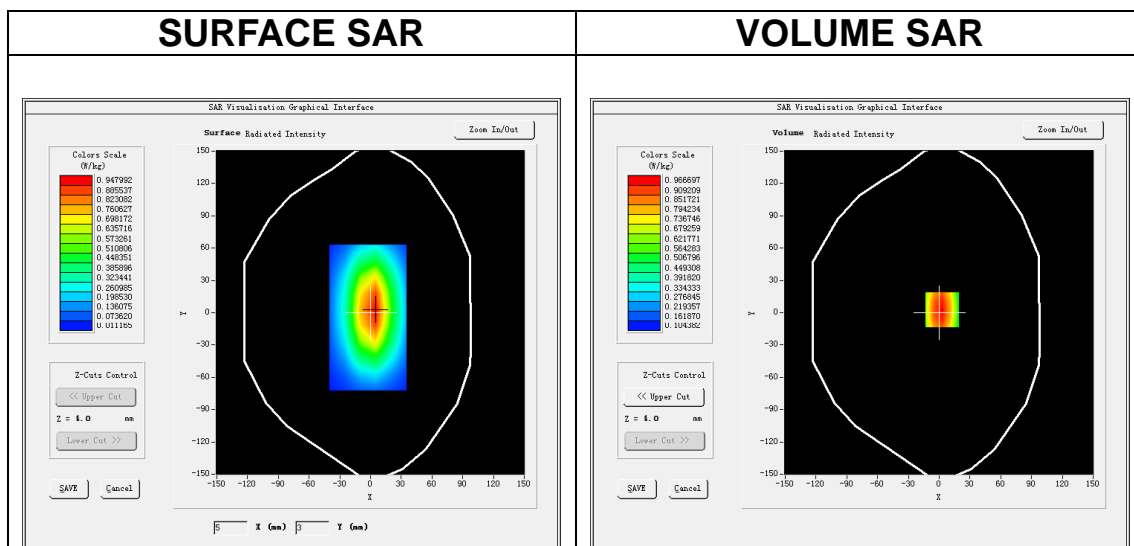
MEASUREMENT 1

A. Experimental conditions.

Area Scan	<u>dx=15mm dy=15mm, h= 5.00 mm</u>
ZoomScan	<u>5x5x7, dx=8mm dy=8mm dz=5mm</u>
Phantom	<u>Validation plane</u>
Device Position	<u>Dipole</u>
Band	<u>CW750</u>
Channels	<u>Middle</u>
Signal	<u>CW (Crest factor: 1.0)</u>

B. SAR Measurement Results

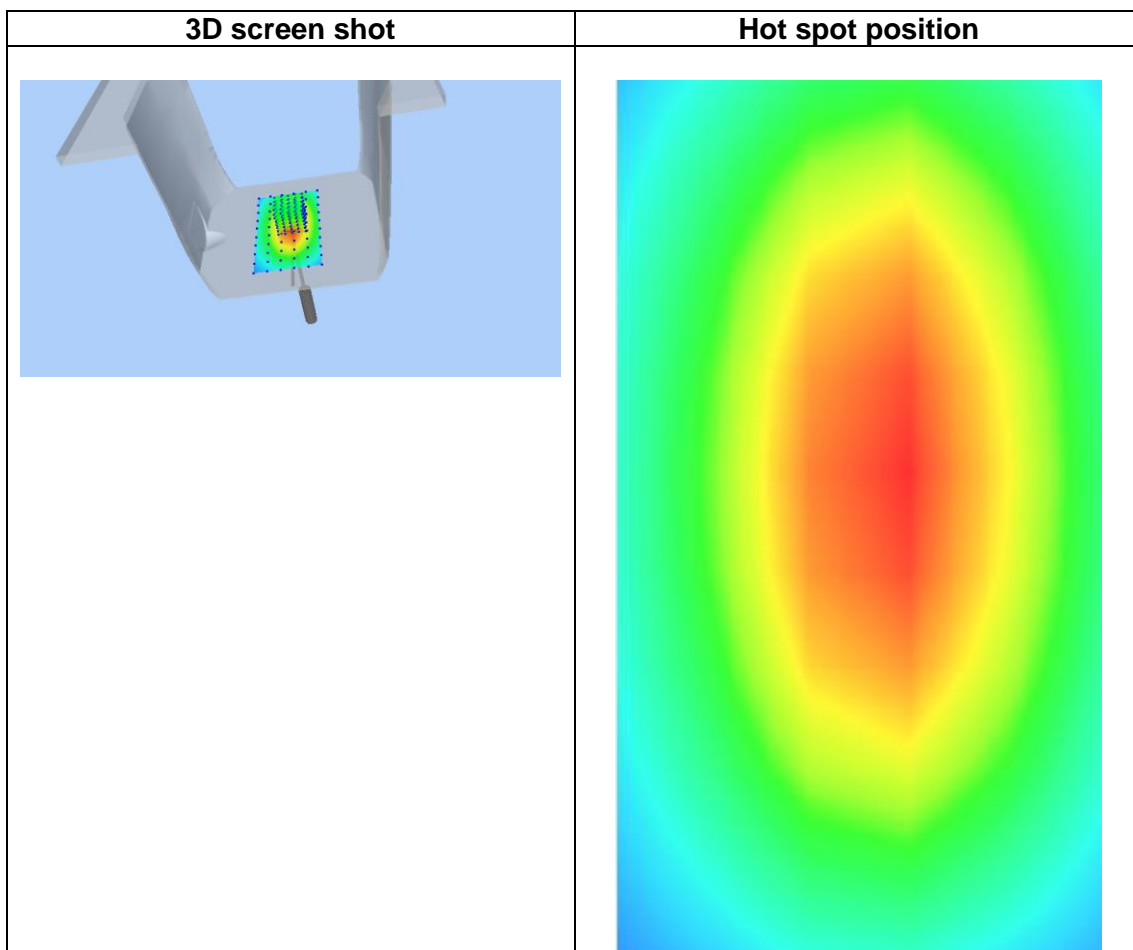
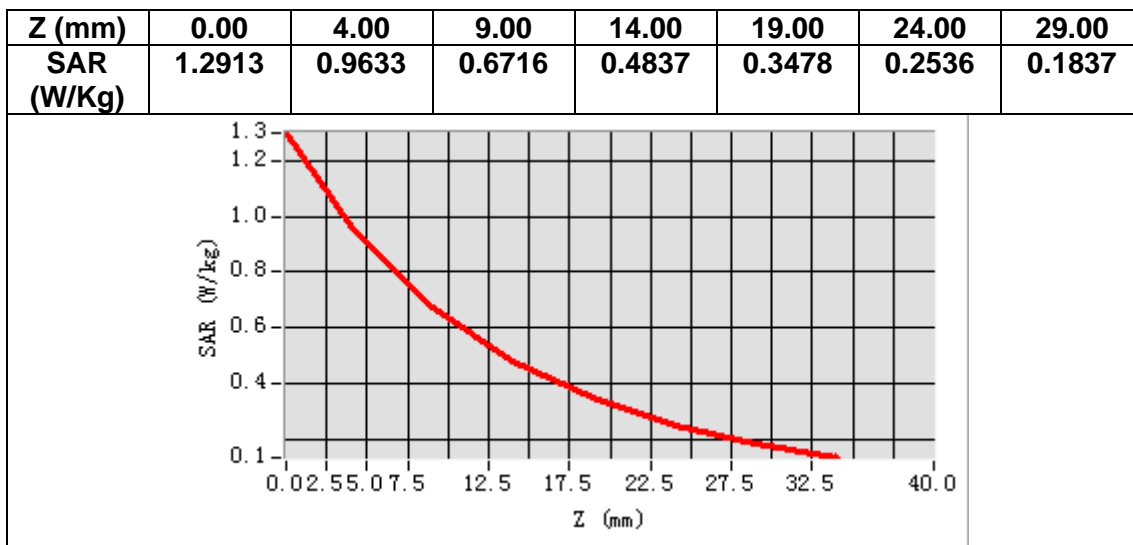
Frequency (MHz)	750.000000
Relative permittivity (real part)	41.233162
Relative permittivity (imaginary part)	21.911263
Conductivity (S/m)	0.912262
Variation (%)	-3.810000



Maximum location: X=3.00, Y=3.00

SAR Peak: 1.30 W/kg

SAR 10g (W/Kg)	0.551218
SAR 1g (W/Kg)	0.853362



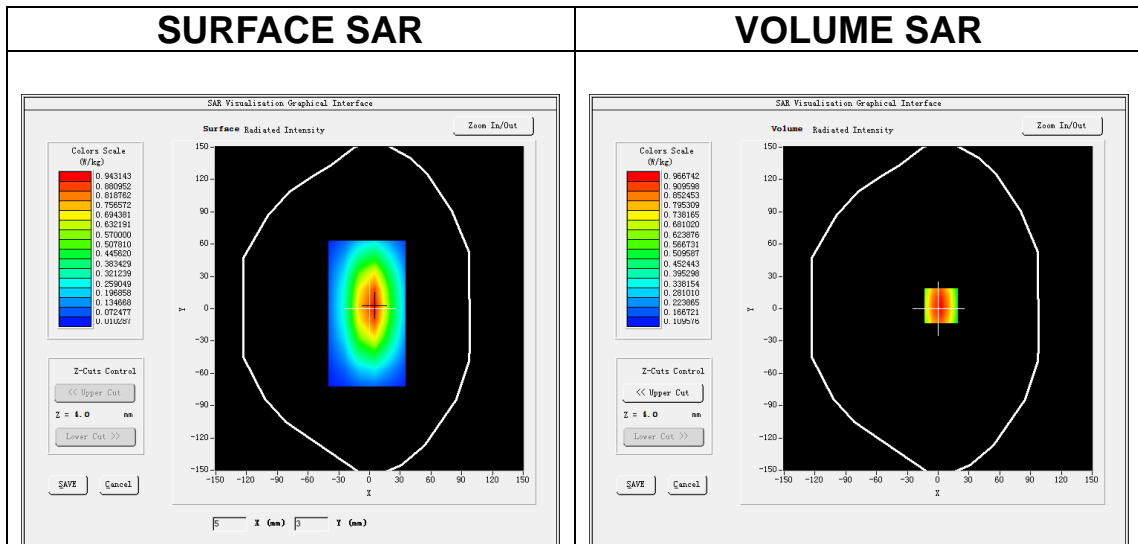
MEASUREMENT 2

A. Experimental conditions.

Area Scan	<u>dx=15mm dy=15mm, h= 5.00 mm</u>
ZoomScan	<u>5x5x7,dx=8mm dy=8mm dz=5mm</u>
Phantom	<u>Validation plane</u>
Device Position	<u>Dipole</u>
Band	<u>CW750</u>
Channels	<u>Middle</u>
Signal	<u>CW (Crest factor: 1.0)</u>

B. SAR Measurement Results

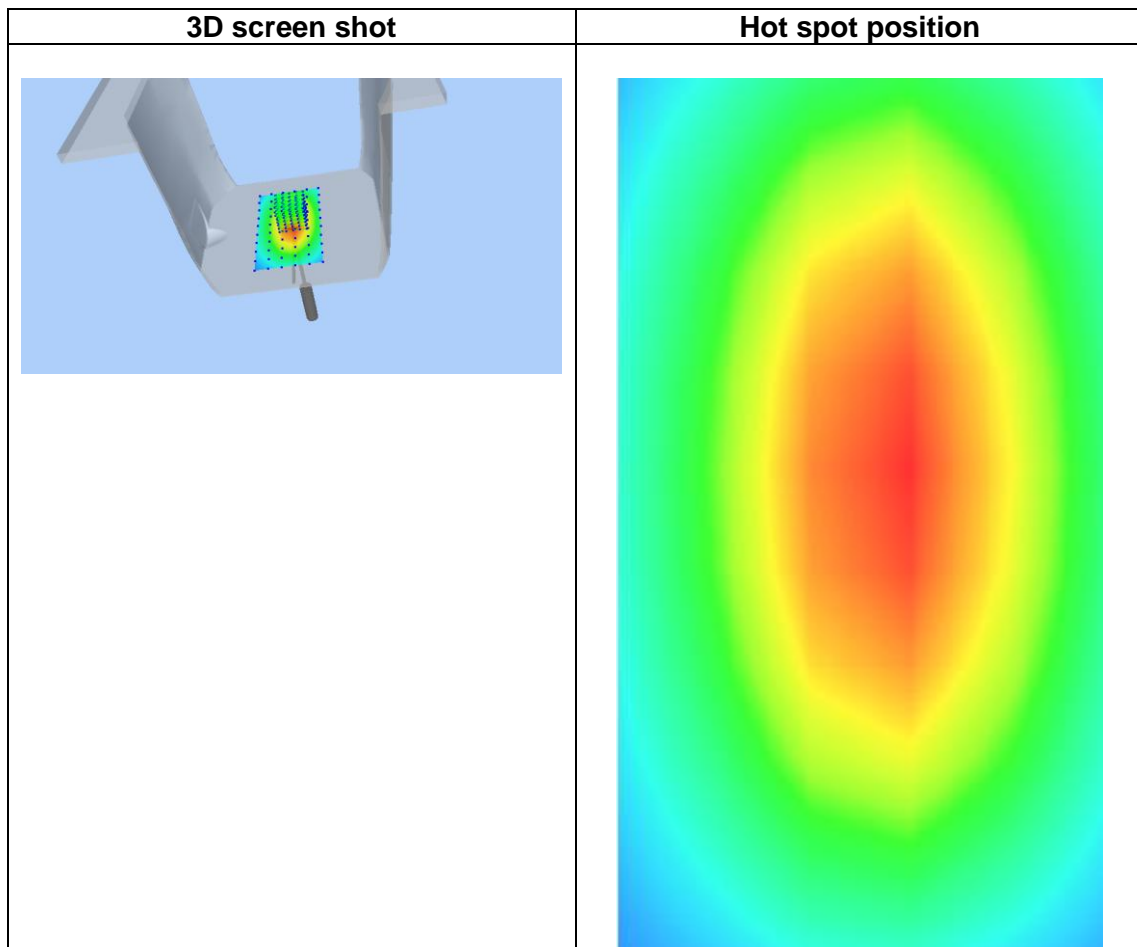
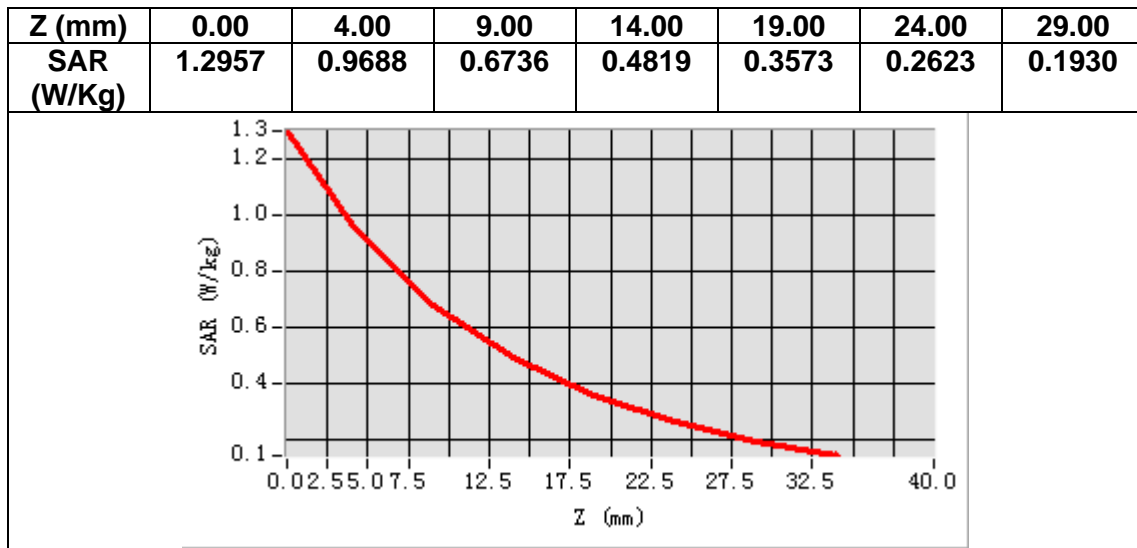
Frequency (MHz)	750.000000
Relative permittivity (real part)	55.300248
Relative permittivity (imaginary part)	23.313842
Conductivity (S/m)	0.970318
Variation (%)	-1.490000



Maximum location: X=3.00, Y=3.00

SAR Peak: 1.30 W/kg

SAR 10g (W/Kg)	0.589281
SAR 1g (W/Kg)	0.886263



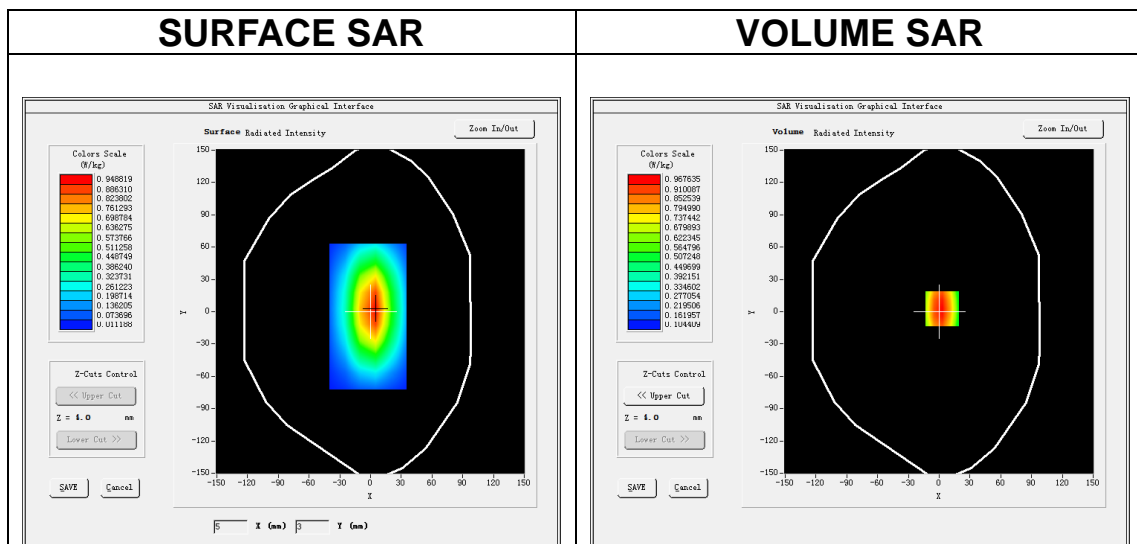
MEASUREMENT 3

A. Experimental conditions.

Area Scan	<u>dx=15mm dy=15mm, h= 5.00 mm</u>
ZoomScan	<u>5x5x7,dx=8mm dy=8mm dz=5mm</u>
Phantom	<u>Validation plane</u>
Device Position	<u>Dipole</u>
Band	<u>CW835</u>
Channels	<u>Middle</u>
Signal	<u>CW (Crest factor: 1.0)</u>

B. SAR Measurement Results

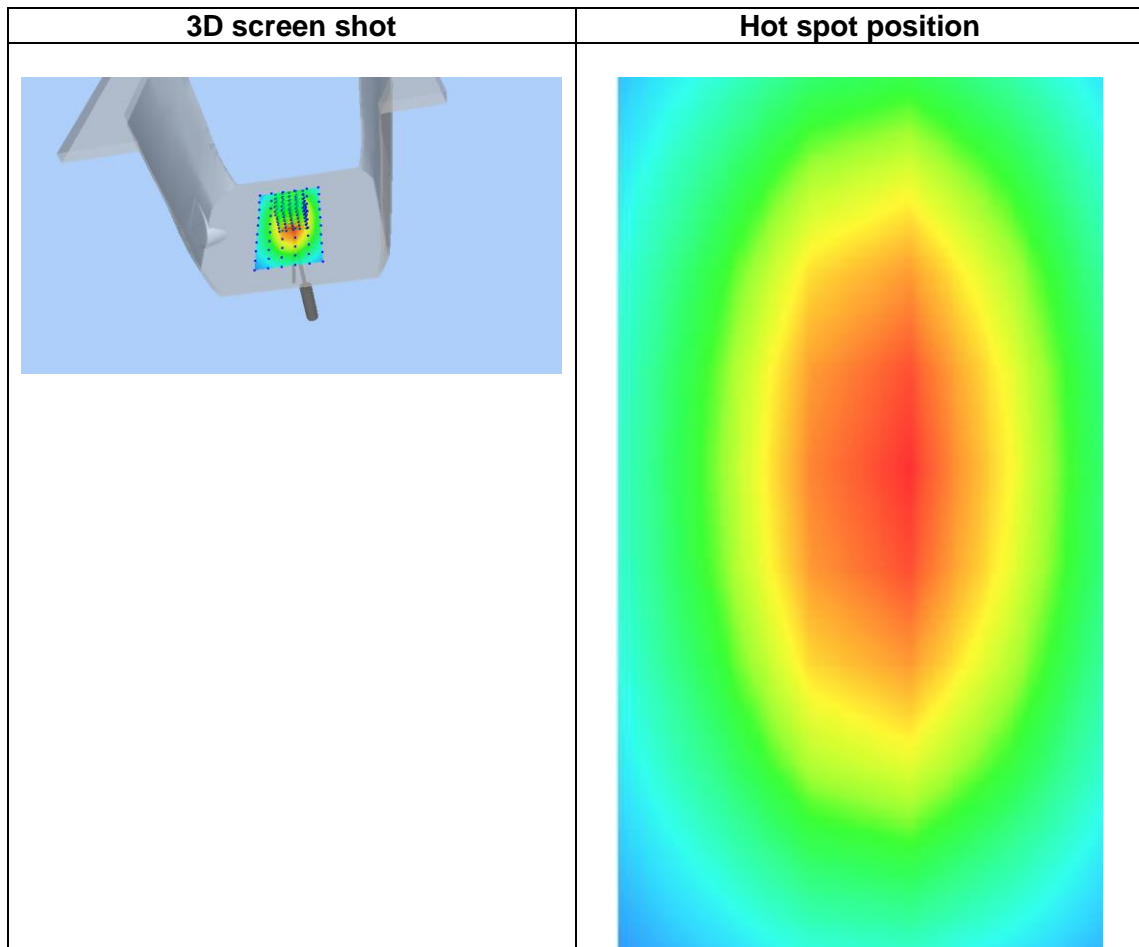
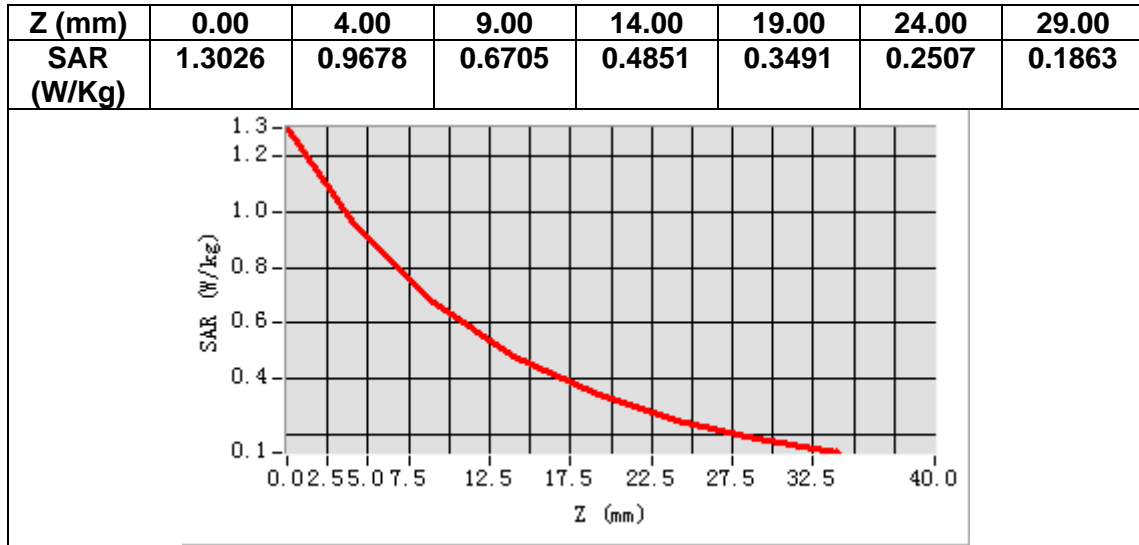
Frequency (MHz)	835.000000
Relative permittivity (real part)	40.533541
Relative permittivity (imaginary part)	20.159613
Conductivity (S/m)	0.940542
Variation (%)	1.870000



Maximum location: X=3.00, Y=3.00

SAR Peak: 1.30 W/kg

SAR 10g (W/Kg)	0.602466
SAR 1g (W/Kg)	0.945035



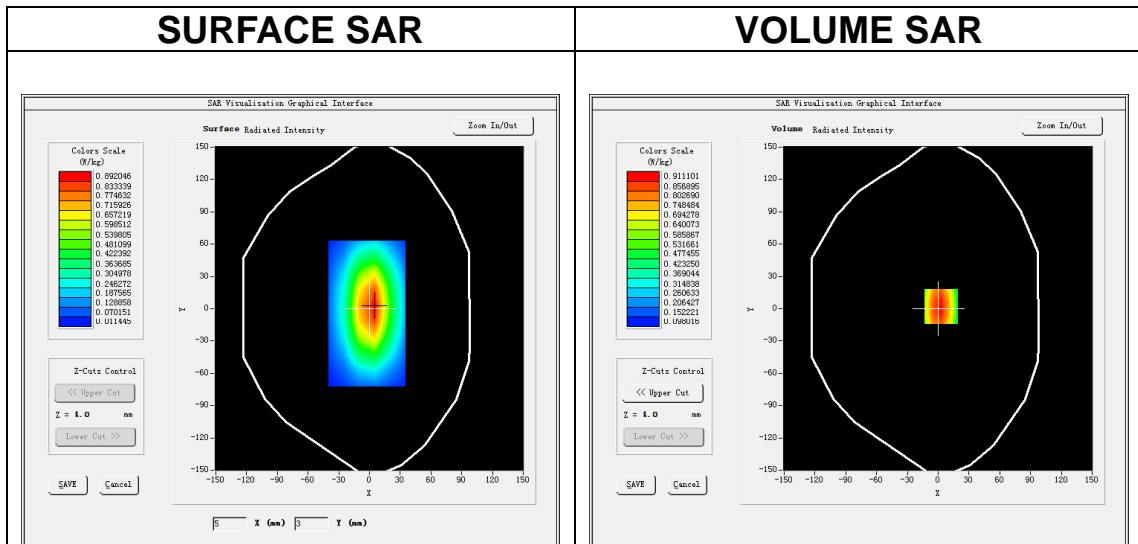
MEASUREMENT 4

A. Experimental conditions.

Area Scan	<u>dx=15mm dy=15mm, h= 5.00 mm</u>
ZoomScan	<u>5x5x7,dx=8mm dy=8mm dz=5mm</u>
Phantom	<u>Validation plane</u>
Device Position	<u>Dipole</u>
Band	<u>CW835</u>
Channels	<u>Middle</u>
Signal	<u>CW (Crest factor: 1.0)</u>

B. SAR Measurement Results

Frequency (MHz)	835.000000
Relative permittivity (real part)	54.371111
Relative permittivity (imaginary part)	21.743359
Conductivity (S/m)	1.011236
Variation (%)	-1.200000

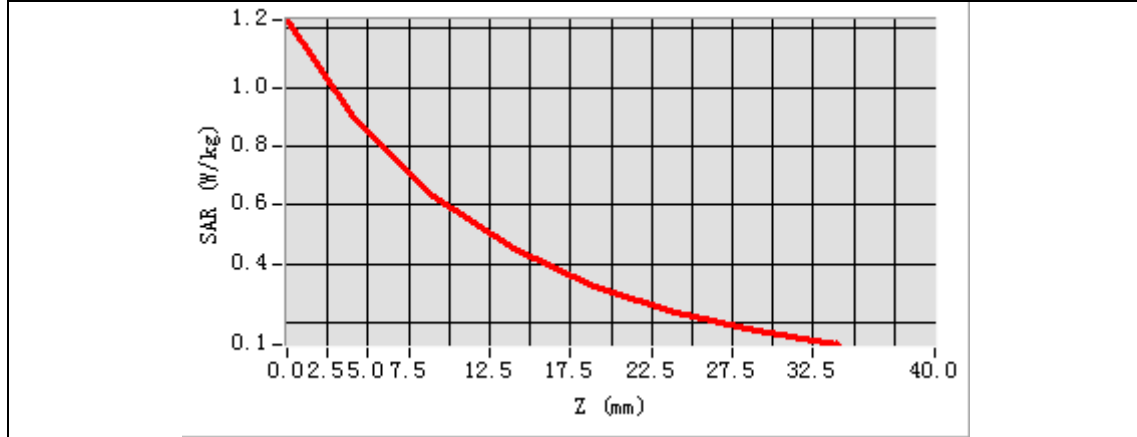


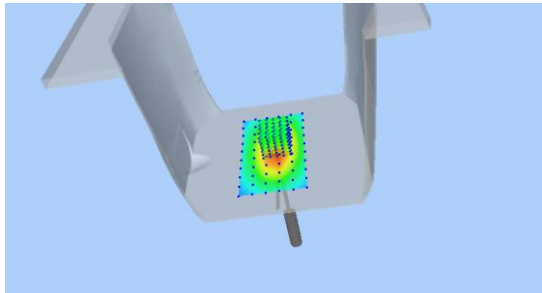
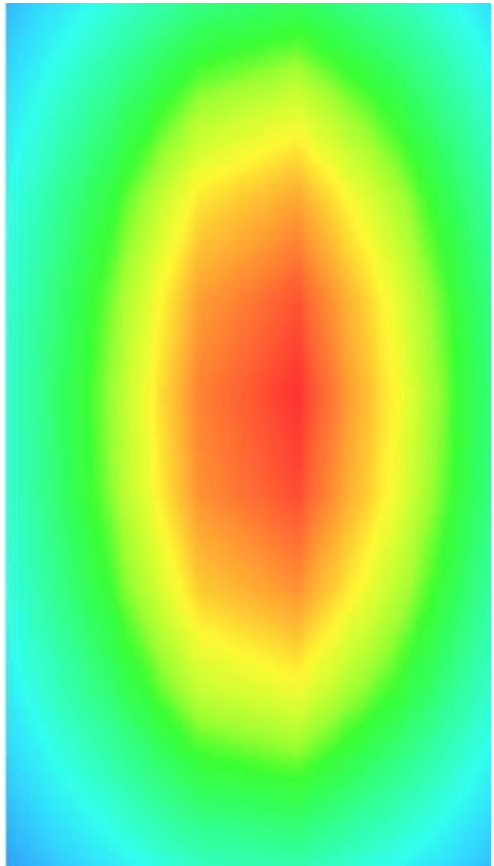
Maximum location: X=3.00, Y=2.00

SAR Peak: 1.23 W/kg

SAR 10g (W/Kg)	0.660123
SAR 1g (W/Kg)	0.970356

Z (mm)	0.00	4.00	9.00	14.00	19.00	24.00	29.00
SAR (W/Kg)	1.2214	0.9178	0.6330	0.4575	0.3252	0.2301	0.1735



3D screen shot	Hot spot position
	

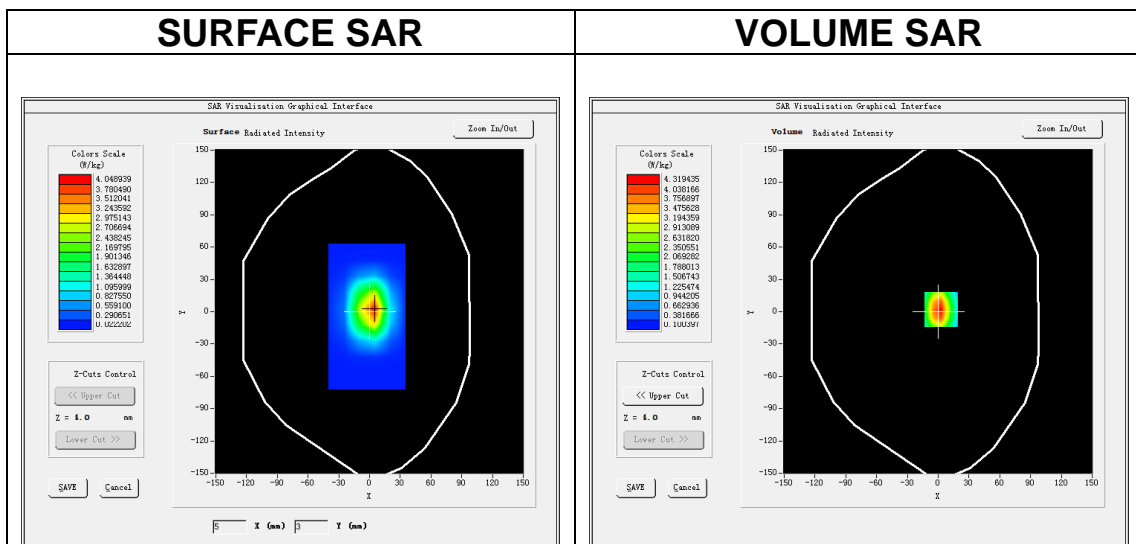
MEASUREMENT 5

A. Experimental conditions.

Area Scan	<u>dx=15mm dy=15mm, h= 5.00 mm</u>
ZoomScan	<u>5x5x7,dx=8mm dy=8mm dz=5mm</u>
Phantom	<u>Validation plane</u>
Device Position	<u>Dipole</u>
Band	<u>CW1800</u>
Channels	<u>Middle</u>
Signal	<u>CW (Crest factor: 1.0)</u>

B. SAR Measurement Results

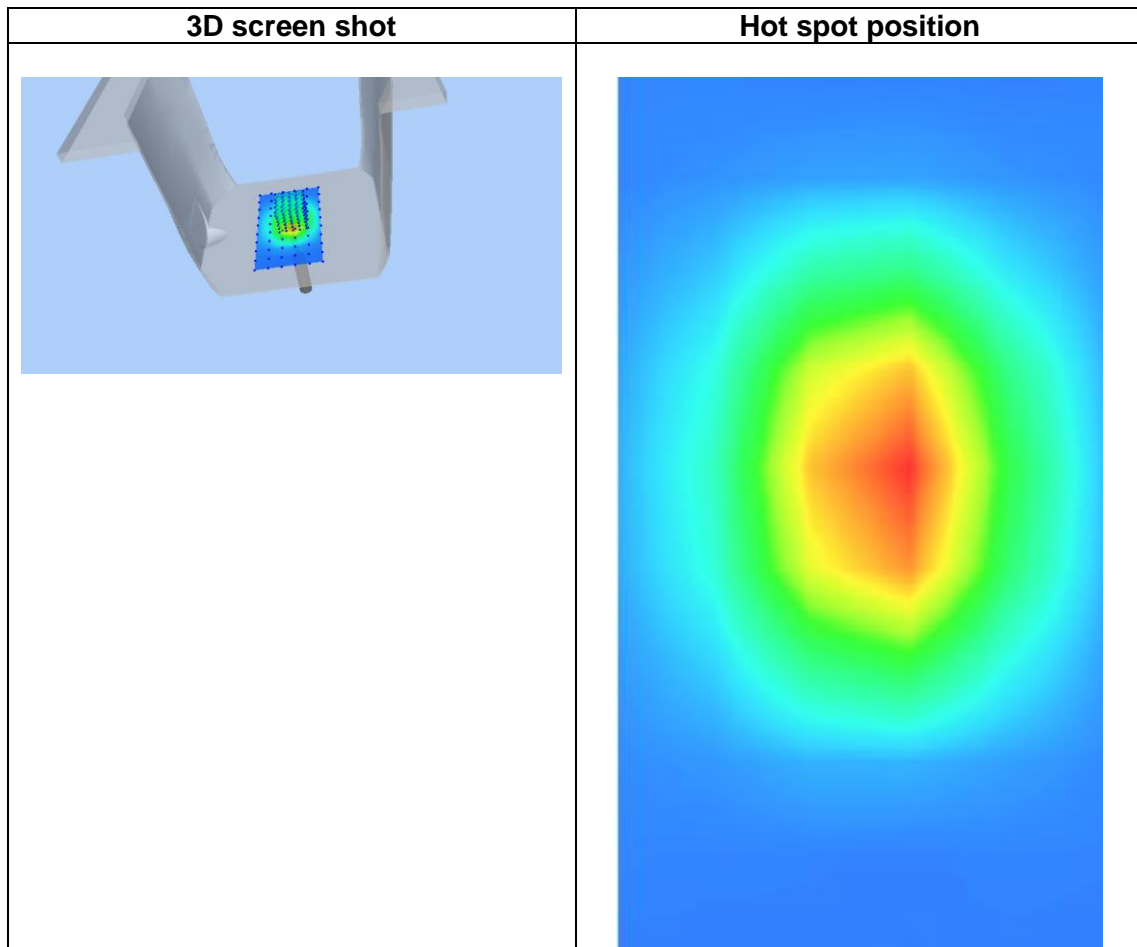
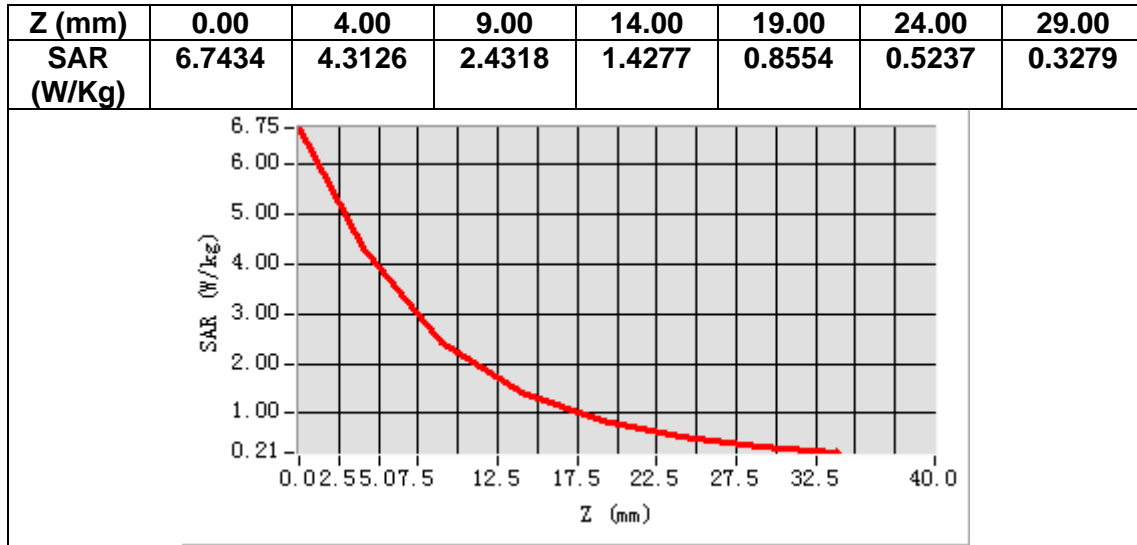
Frequency (MHz)	1800.000000
Relative permittivity (real part)	38.481237
Relative permittivity (imaginary part)	14.143229
Conductivity (S/m)	1.409367
Variation (%)	-2.110000



Maximum location: X=3.00, Y=2.00

SAR Peak: 6.82 W/kg

SAR 10g (W/Kg)	2.010397
SAR 1g (W/Kg)	3.806451



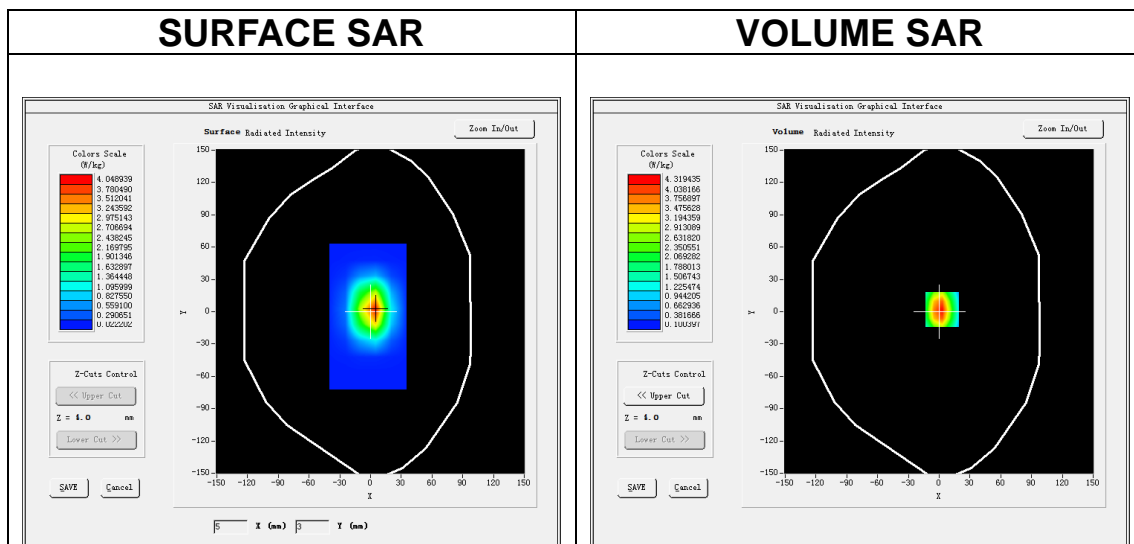
MEASUREMENT 6

A. Experimental conditions.

Area Scan	<u>dx=15mm dy=15mm, h= 5.00 mm</u>
ZoomScan	<u>5x5x7,dx=8mm dy=8mm dz=5mm</u>
Phantom	<u>Validation plane</u>
Device Position	<u>Dipole</u>
Band	<u>CW1800</u>
Channels	<u>Middle</u>
Signal	<u>CW (Crest factor: 1.0)</u>

B. SAR Measurement Results

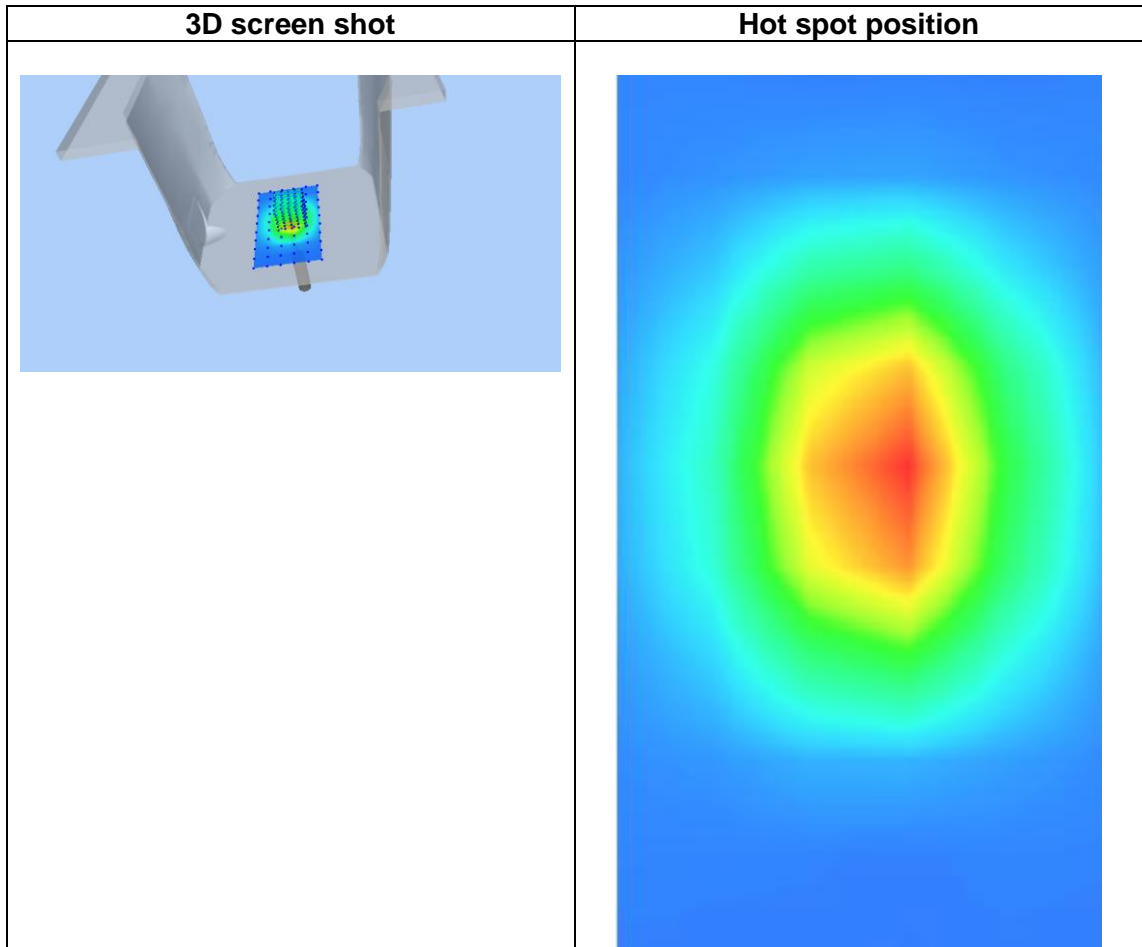
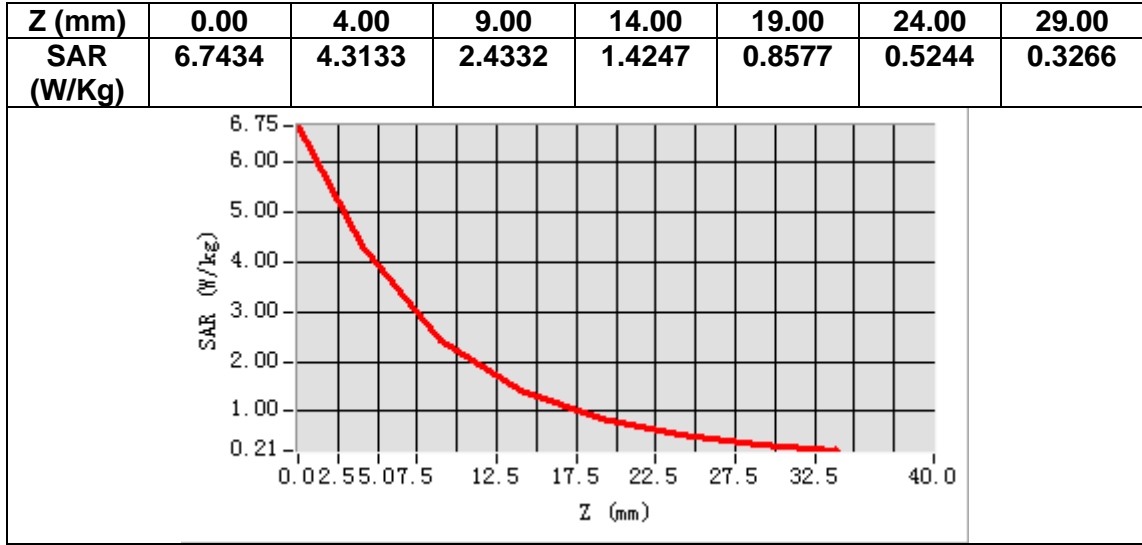
Frequency (MHz)	1800.000000
Relative permittivity (real part)	53.243510
Relative permittivity (imaginary part)	15.634016
Conductivity (S/m)	1.563096
Variation (%)	2.020000



Maximum location: X=3.00, Y=2.00

SAR Peak: 6.82 W/kg

SAR 10g (W/Kg)	2.063379
SAR 1g (W/Kg)	3.812268



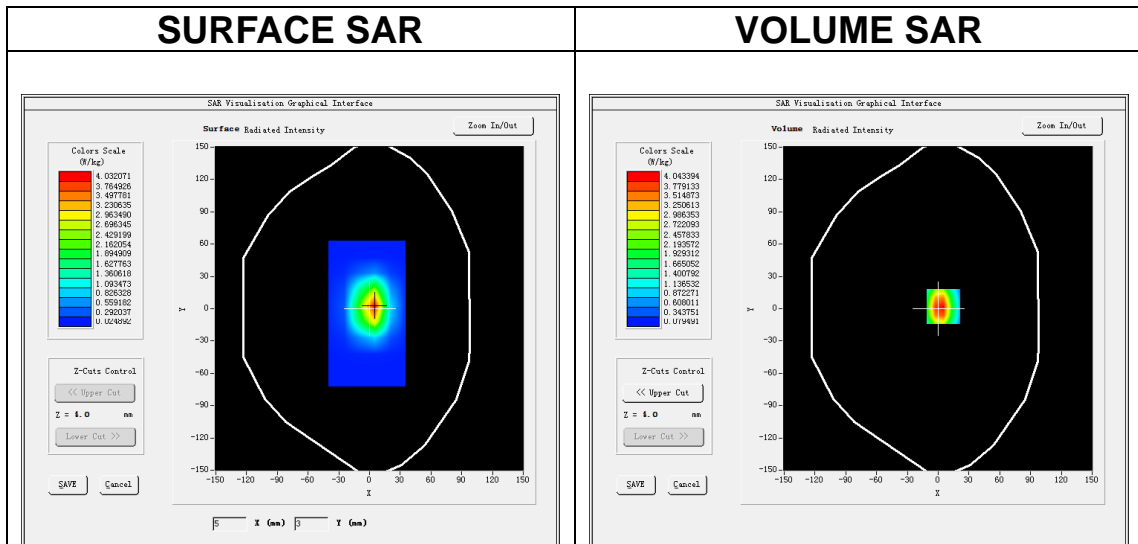
MEASUREMENT 7

A. Experimental conditions.

Area Scan	<u>dx=15mm dy=15mm, h= 5.00 mm</u>
ZoomScan	<u>5x5x7,dx=8mm dy=8mm dz=5mm</u>
Phantom	<u>Validation plane</u>
Device Position	<u>Dipole</u>
Band	<u>CW1900</u>
Channels	<u>Middle</u>
Signal	<u>CW (Crest factor: 1.0)</u>

B. SAR Measurement Results

Frequency (MHz)	1900.000000
Relative permittivity (real part)	40.961287
Relative permittivity (imaginary part)	13.843008
Conductivity (S/m)	1.460336
Variation (%)	-1.430000

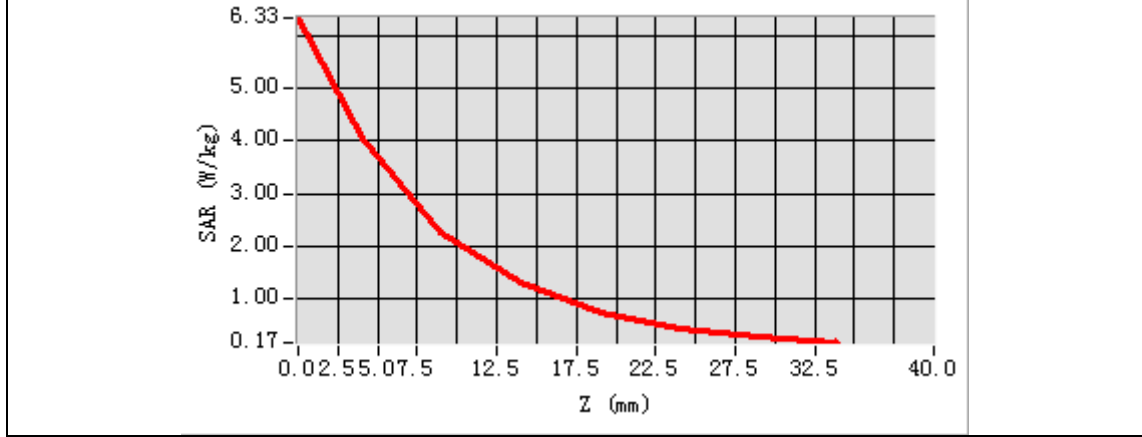


Maximum location: X=5.00, Y=2.00

SAR Peak: 6.70 W/kg

SAR 10g (W/Kg)	2.007456
SAR 1g (W/Kg)	3.890365

Z (mm)	0.00	4.00	9.00	14.00	19.00	24.00	29.00
SAR (W/Kg)	6.3211	4.0432	2.2653	1.3077	0.7635	0.4533	0.2735



3D screen shot	Hot spot position

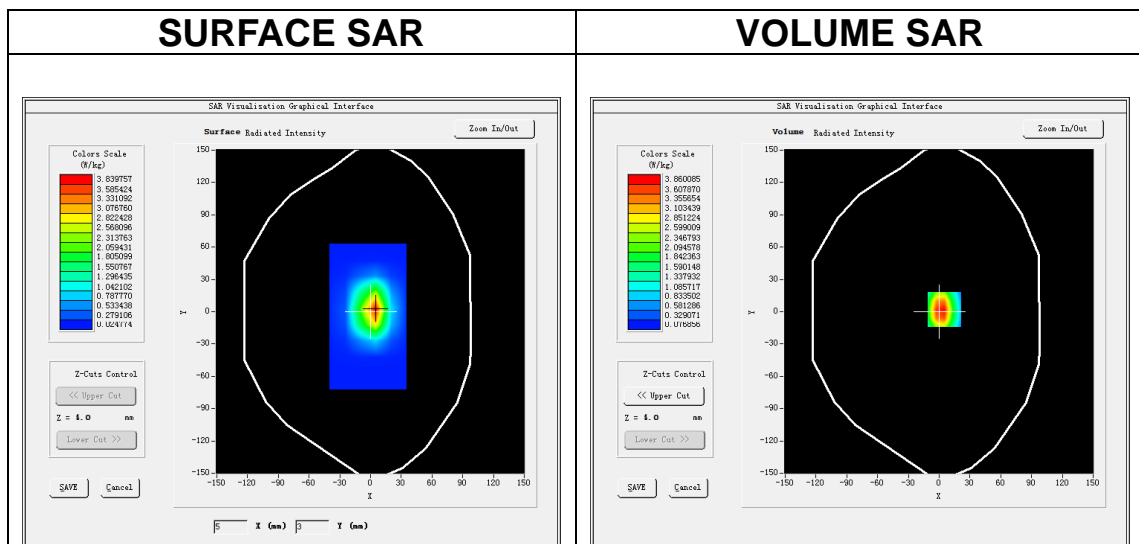
MEASUREMENT 8

A. Experimental conditions.

Area Scan	<u>dx=15mm dy=15mm, h= 5.00 mm</u>
ZoomScan	<u>5x5x7,dx=8mm dy=8mm dz=5mm</u>
Phantom	<u>Validation plane</u>
Device Position	<u>Dipole</u>
Band	<u>CW1900</u>
Channels	<u>Middle</u>
Signal	<u>CW (Crest factor: 1.0)</u>

B. SAR Measurement Results

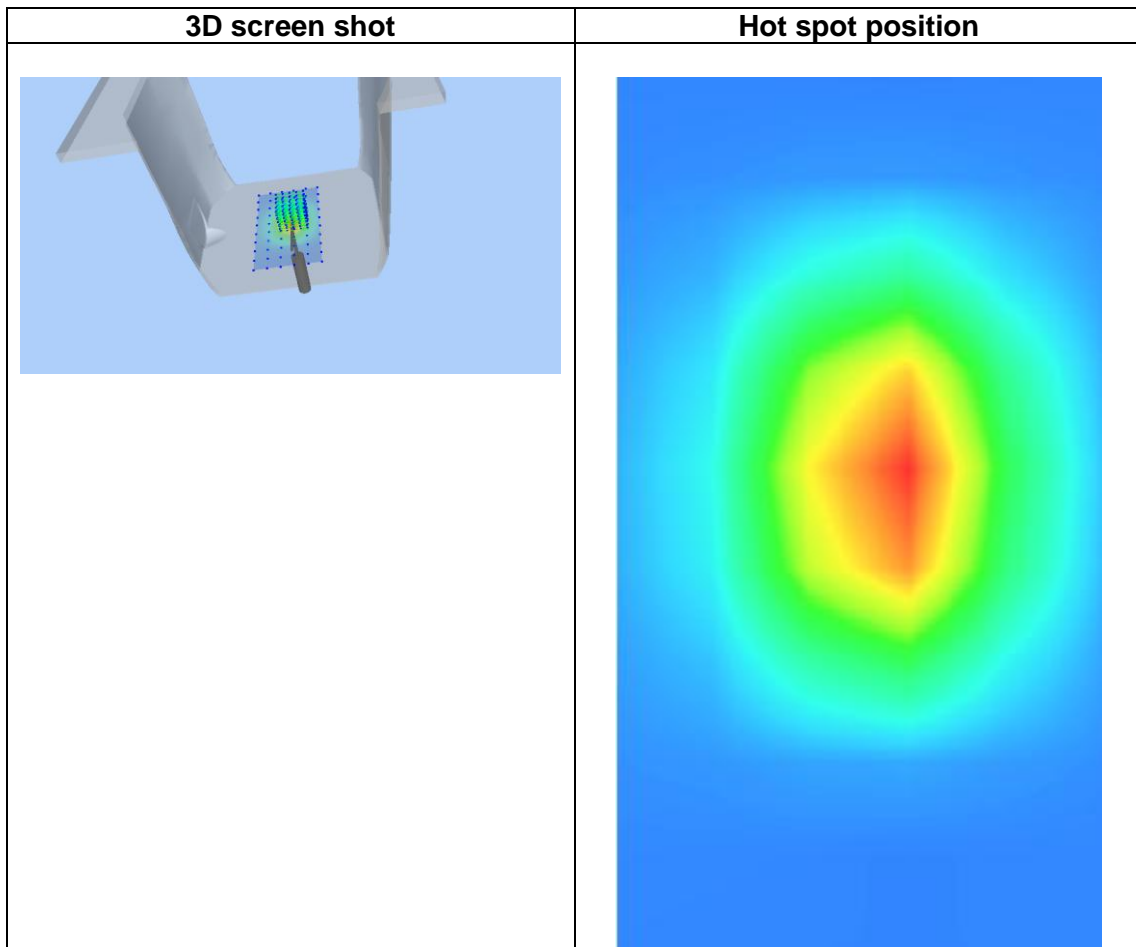
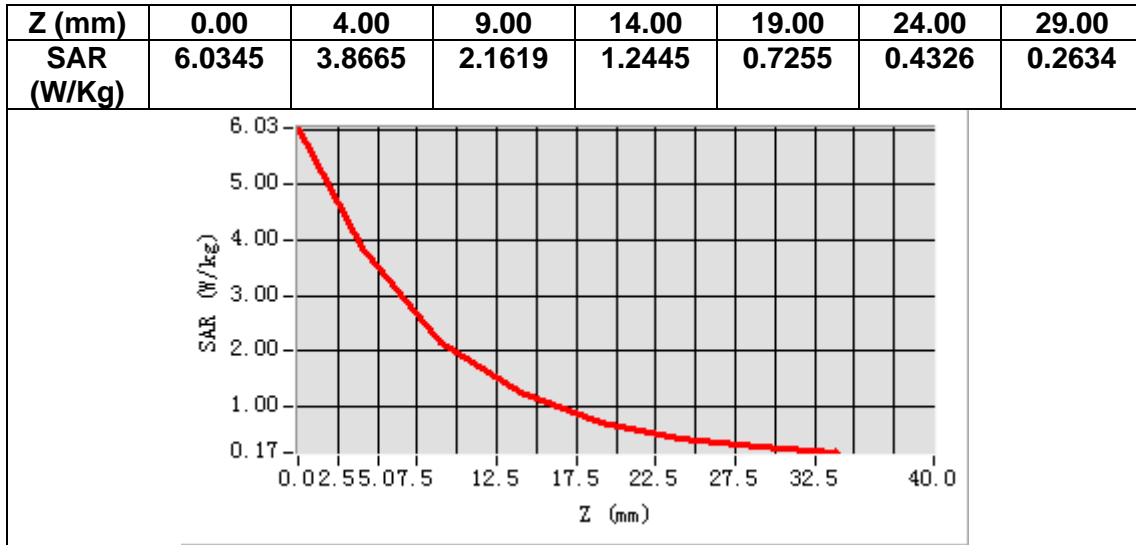
Frequency (MHz)	1900.000000
Relative permittivity (real part)	52.573335
Relative permittivity (imaginary part)	14.903503
Conductivity (S/m)	1.569566
Variation (%)	3.460000



Maximum location: X=5.00, Y=2.00

SAR Peak: 6.39 W/kg

SAR 10g (W/Kg)	2.059329
SAR 1g (W/Kg)	3.910402



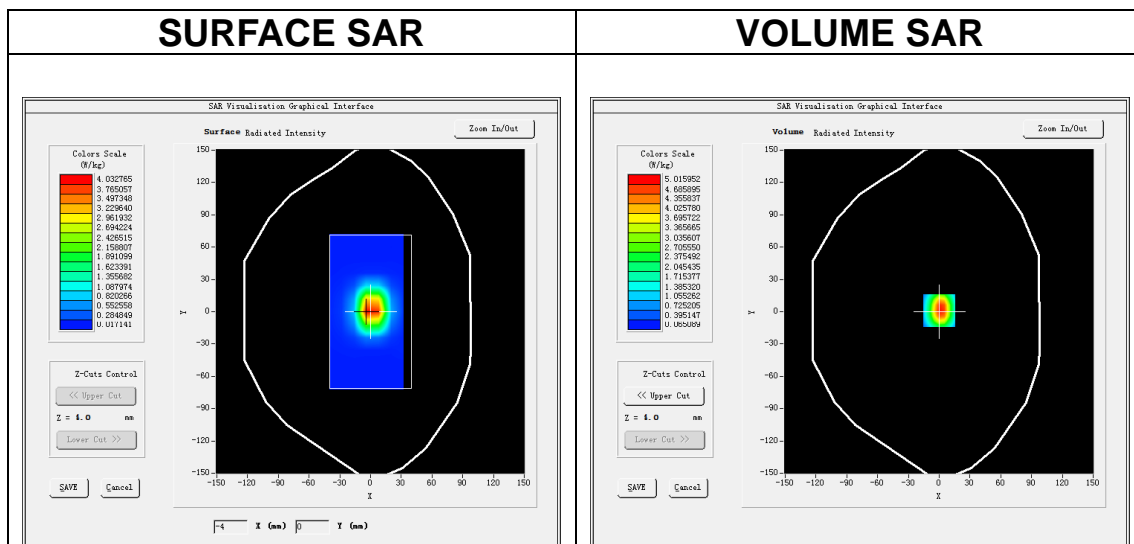
MEASUREMENT 9

A. Experimental conditions.

Area Scan	<u>dx=12mm dy=12mm, h= 5.00 mm</u>
ZoomScan	<u>7x7x7,dx=5mm dy=5mm dz=5mm</u>
Phantom	<u>Validation plane</u>
Device Position	<u>Dipole</u>
Band	<u>CW2450</u>
Channels	<u>Middle</u>
Signal	<u>CW (Crest factor: 1.0)</u>

B. SAR Measurement Results

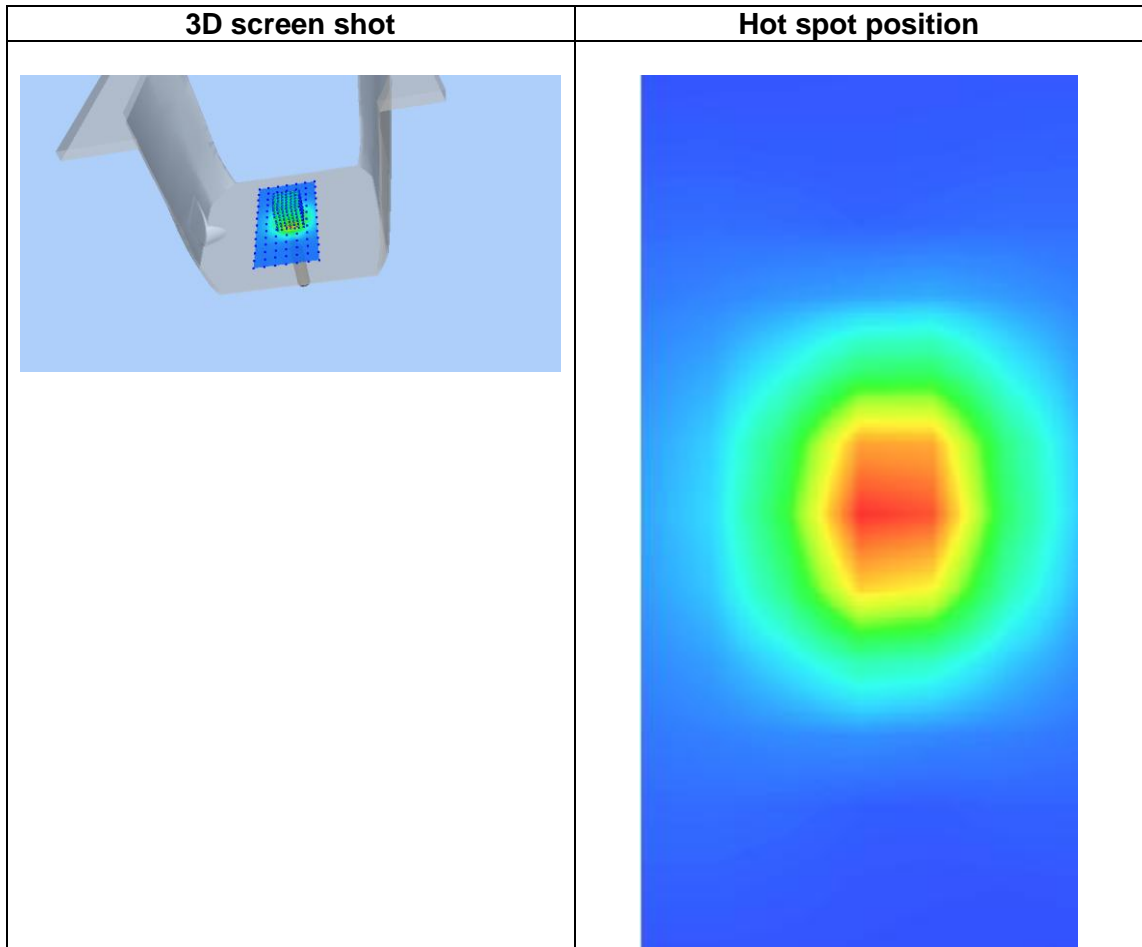
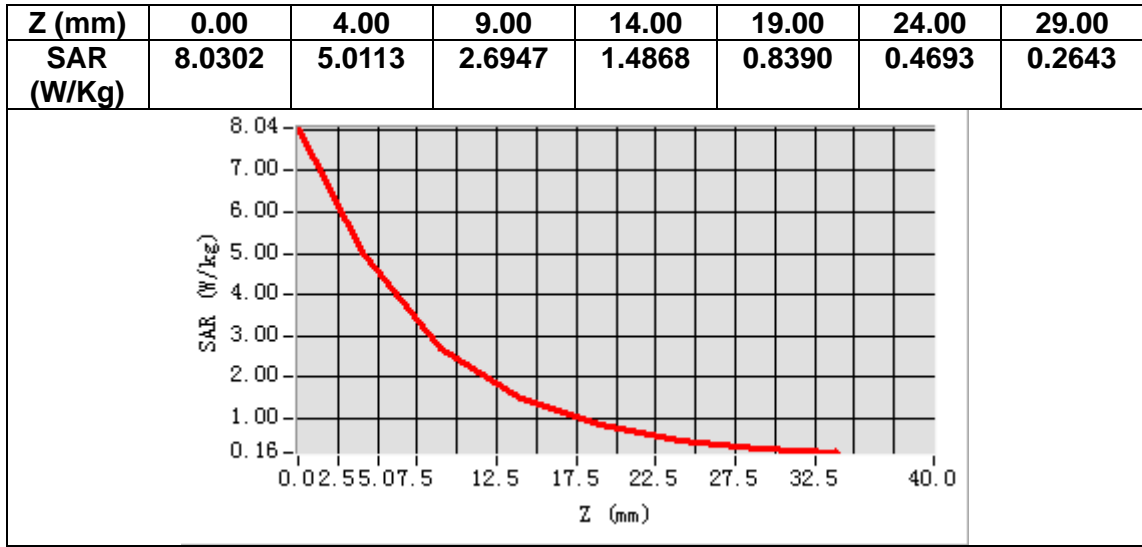
Frequency (MHz)	2450.000000
Relative permittivity (real part)	38.721421
Relative permittivity (imaginary part)	13.792631
Conductivity (S/m)	1.879663
Variation (%)	-3.350000



Maximum location: X=0.00, Y=1.00

SAR Peak: 8.14 W/kg

SAR 10g (W/Kg)	2.416375
SAR 1g (W/Kg)	5.369435



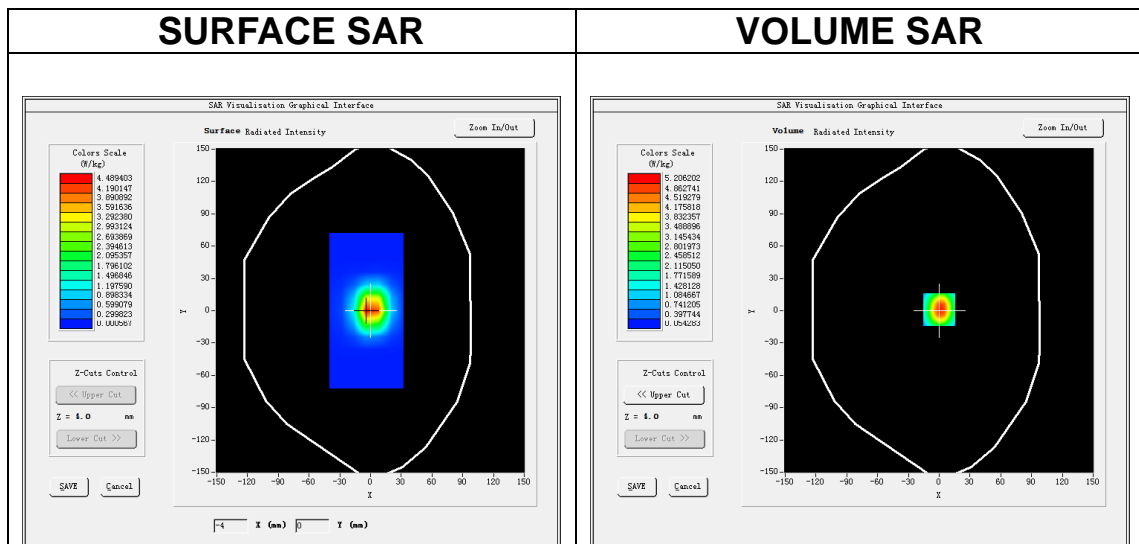
MEASUREMENT 10

A. Experimental conditions.

Area Scan	<u>dx=12mm dy=12mm, h= 5.00 mm</u>
ZoomScan	<u>7x7x7, dx=5mm dy=5mm dz=5mm</u>
Phantom	<u>Validation plane</u>
Device Position	<u>Dipole</u>
Band	<u>CW2450</u>
Channels	<u>Middle</u>
Signal	<u>CW (Crest factor: 1.0)</u>

B. SAR Measurement Results

Frequency (MHz)	2450.000000
Relative permittivity (real part)	52.091497
Relative permittivity (imaginary part)	14.883566
Conductivity (S/m)	2.032816
Variation (%)	1.420000

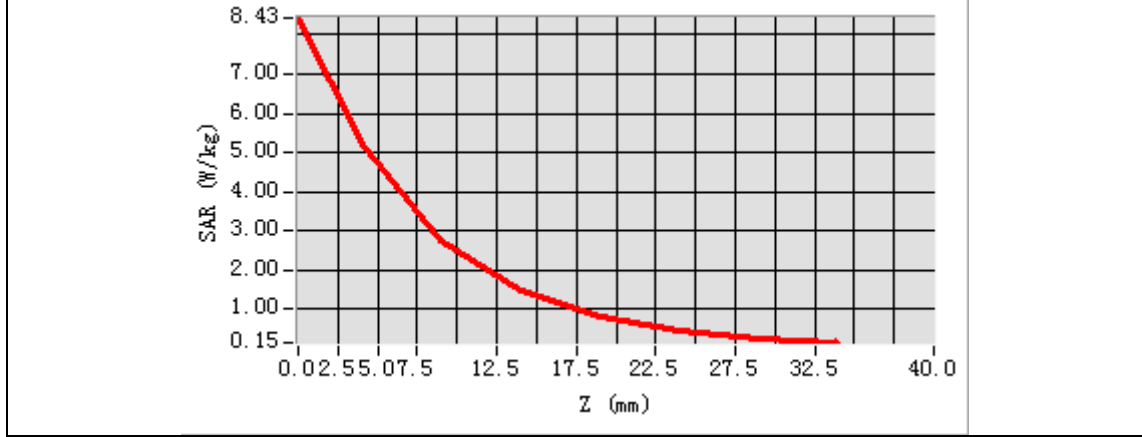


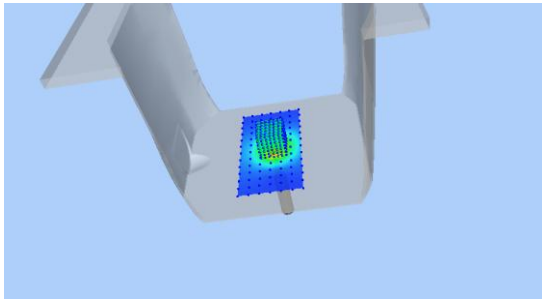
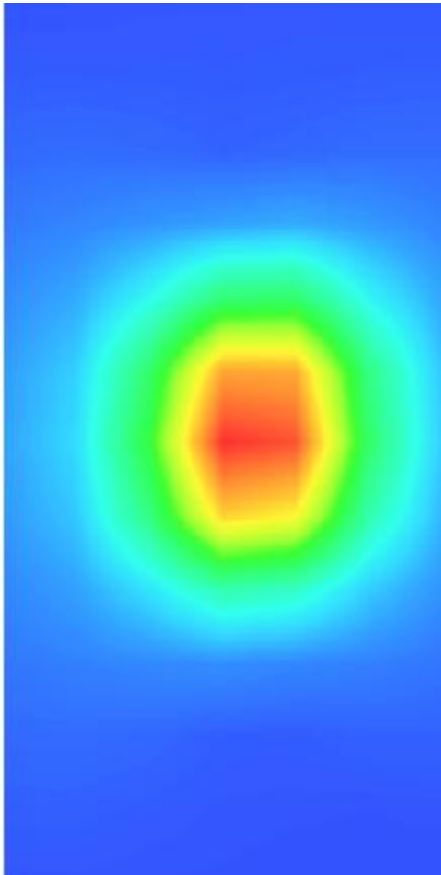
Maximum location: X=0.00, Y=1.00

SAR Peak: 8.46 W/kg

SAR 10g (W/Kg)	2.401285
SAR 1g (W/Kg)	5.288270

Z (mm)	0.00	4.00	9.00	14.00	19.00	24.00	29.00
SAR (W/Kg)	8.4312	5.2217	2.7528	1.4235	0.8268	0.4398	0.2567



3D screen shot	Hot spot position
	

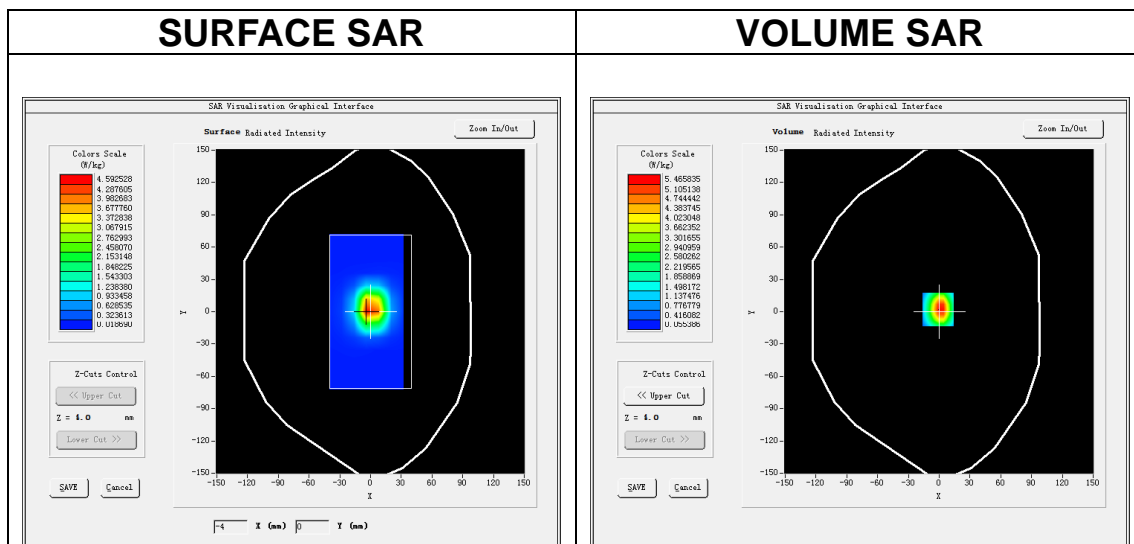
MEASUREMENT 11

A. Experimental conditions.

Area Scan	<u>dx=12mm dy=12mm, h= 5.00 mm</u>
ZoomScan	<u>7x7x7,dx=5mm dy=5mm dz=5mm</u>
Phantom	<u>Validation plane</u>
Device Position	<u>Dipole</u>
Band	<u>CW2600</u>
Channels	<u>Middle</u>
Signal	<u>CW (Crest factor: 1.0)</u>

B. SAR Measurement Results

Frequency (MHz)	2600.000000
Relative permittivity (real part)	38.402638
Relative permittivity (imaginary part)	14.023997
Conductivity (S/m)	2.033631
Variation (%)	-0.040000



Maximum location: X=-1.00, Y=2.00

SAR Peak: 9.07 W/kg

SAR 10g (W/Kg)	2.419205
SAR 1g (W/Kg)	5.550267