

		GSM 850	WLAN 2.4G	(W/Kg)		
Head	Left Cheek	1.129	0.403	1.532	N/A	N/A
	Left Tilt 15 Degree	0.548	0.285	0.833	N/A	N/A
	Right Cheek	0.783	0.326	1.109	N/A	N/A
	Right Tilt 15 Degree	0.532	0.211	0.743	N/A	N/A
Body-Worn	Front Side	0.714	0.079	0.793	N/A	N/A
	Back Side	1.121	0.130	1.251	N/A	N/A
Hotspot	Front Side	0.714	0.079	0.793	N/A	N/A
	Back Side	1.121	0.130	1.251	N/A	N/A
	Left Side	0.783	N/A	0.783	N/A	N/A
	Right Side	0.499	0.031	0.530	N/A	N/A
	Top Side	N/A	0.045	0.045	N/A	N/A
	Bottom Side	0.406	N/A	0.406	N/A	N/A

NOTE: 1-g SAR Simultaneous Tx Combination of GSM850 and WLAN 2.4G.

Test Position		Scaled SAR _{MAX}		Σ 1-g SAR (W/Kg)	SPLSR	Remark
		GSM 1900	WLAN 2.4G			
Head	Left Cheek	1.183	0.403	1.586	N/A	N/A
	Left Tilt 15 Degree	0.702	0.285	0.987	N/A	N/A
	Right Cheek	0.798	0.326	1.125	N/A	N/A
	Right Tilt 15 Degree	0.583	0.211	0.794	N/A	N/A
Body-Worn	Front Side	0.607	0.079	0.686	N/A	N/A
	Back Side	0.748	0.130	0.878	N/A	N/A
Hotspot	Front Side	0.607	0.079	0.686	N/A	N/A
	Back Side	0.748	0.130	0.878	N/A	N/A
	Left Side	0.530	N/A	0.530	N/A	N/A
	Right Side	0.357	0.031	0.388	N/A	N/A
	Top Side	N/A	0.045	0.045	N/A	N/A
	Bottom Side	0.273	N/A	0.273	N/A	N/A

NOTE: 1-g SAR Simultaneous Tx Combination of GSM1900 and WLAN 2.4G.

Test Position		Scaled SAR _{MAX}		Σ 1-g SAR (W/Kg)	SPLSR	Remark
		WCDMA Band 2	WLAN 2.4G			
Head	Left Cheek	0.902	0.403	1.305	N/A	N/A
	Left Tilt 15 Degree	0.490	0.285	0.775	N/A	N/A
	Right Cheek	0.791	0.326	1.117	N/A	N/A
	Right Tilt 15 Degree	0.393	0.211	0.604	N/A	N/A
Body-Worn	Front Side	0.533	0.079	0.613	N/A	N/A

	Back Side	0.700	0.130	0.830	N/A	N/A
Hotspot	Front Side	0.533	0.079	0.613	N/A	N/A
	Back Side	0.700	0.130	0.830	N/A	N/A
	Left Side	0.560	N/A	0.560	N/A	N/A
	Right Side	0.331	0.031	0.362	N/A	N/A
	Top Side	N/A	0.045	0.045	N/A	N/A
	Bottom Side	0.266	N/A	0.266	N/A	N/A

NOTE: 1-g SAR Simultaneous Tx Combination of WCDMA Band 2 and WLAN 2.4G.

Test Position		Scaled SAR _{MAX}		Σ 1-g SAR (W/Kg)	SPLSR	Remark
		WCDMA Band 4	WLAN 2.4G			
Head	Left Cheek	0.749	0.403	1.152	N/A	N/A
	Left Tilt 15 Degree	0.394	0.285	0.678	N/A	N/A
	Right Cheek	0.684	0.326	1.010	N/A	N/A
	Right Tilt 15 Degree	0.336	0.211	0.547	N/A	N/A
Body-Worn	Front Side	0.355	0.079	0.435	N/A	N/A
	Back Side	0.465	0.130	0.595	N/A	N/A
Hotspot	Front Side	0.355	0.079	0.435	N/A	N/A
	Back Side	0.465	0.130	0.595	N/A	N/A
	Left Side	0.368	N/A	0.368	N/A	N/A
	Right Side	0.229	0.031	0.259	N/A	N/A
	Top Side	N/A	0.045	0.045	N/A	N/A
	Bottom Side	0.173	N/A	0.173	N/A	N/A

NOTE: 1-g SAR Simultaneous Tx Combination of WCDMA Band 4 and WLAN 2.4G.

Test Position		Scaled SAR _{MAX}		Σ 1-g SAR (W/Kg)	SPLSR	Remark
		WCDMA Band 5	WLAN 2.4G			
Head	Left Cheek	0.739	0.403	1.142	N/A	N/A
	Left Tilt 15 Degree	0.408	0.285	0.692	N/A	N/A
	Right Cheek	0.634	0.326	0.961	N/A	N/A
	Right Tilt 15 Degree	0.315	0.211	0.526	N/A	N/A
Body-Worn	Front Side	0.708	0.079	0.788	N/A	N/A
	Back Side	0.929	0.130	1.059	N/A	N/A
Hotspot	Front Side	0.708	0.079	0.788	N/A	N/A
	Back Side	0.929	0.130	1.059	N/A	N/A
	Left Side	0.724	N/A	0.724	N/A	N/A
	Right Side	0.410	0.031	0.441	N/A	N/A
	Top Side	N/A	0.045	0.045	N/A	N/A

	Bottom Side	0.313	N/A	0.313	N/A	N/A
--	-------------	-------	-----	-------	-----	-----

NOTE: 1-g SAR Simultaneous Tx Combination of WCDMA Band 5 and WLAN 2.4G.

Test Position		Scaled SAR _{MAX}		Σ 1-g SAR (W/Kg)	SPLSR	Remark
		LTE Band 2	WLAN 2.4G			
Head	Left Cheek	0.797	0.403	1.200	N/A	N/A
	Left Tilt 15 Degree	0.493	0.285	0.778	N/A	N/A
	Right Cheek	0.754	0.326	1.080	N/A	N/A
	Right Tilt 15 Degree	0.353	0.211	0.564	N/A	N/A
Body-Worn	Front Side	0.770	0.079	0.850	N/A	N/A
	Back Side	1.188	0.130	1.319	N/A	N/A
Hotspot	Front Side	0.770	0.079	0.850	N/A	N/A
	Back Side	1.188	0.130	1.319	N/A	N/A
	Left Side	0.703	N/A	0.703	N/A	N/A
	Right Side	0.543	0.031	0.574	N/A	N/A
	Top Side	N/A	0.045	0.045	N/A	N/A
	Bottom Side	0.483	N/A	0.483	N/A	N/A

NOTE: 1-g SAR Simultaneous Tx Combination of LTE Band 2 and WLAN 2.4G.

Test Position		Scaled SAR _{MAX}		Σ 1-g SAR (W/Kg)	SPLSR	Remark
		LTE Band 4	WLAN 2.4G			
Head	Left Cheek	0.708	0.403	1.111	N/A	N/A
	Left Tilt 15 Degree	0.365	0.285	0.649	N/A	N/A
	Right Cheek	0.657	0.326	0.983	N/A	N/A
	Right Tilt 15 Degree	0.297	0.211	0.508	N/A	N/A
Body-Worn	Front Side	0.347	0.079	0.426	N/A	N/A
	Back Side	0.415	0.130	0.546	N/A	N/A
Hotspot	Front Side	0.347	0.079	0.426	N/A	N/A
	Back Side	0.415	0.130	0.546	N/A	N/A
	Left Side	0.298	N/A	0.298	N/A	N/A
	Right Side	0.179	0.031	0.210	N/A	N/A
	Top Side	N/A	0.045	0.045	N/A	N/A
	Bottom Side	0.141	N/A	0.141	N/A	N/A

NOTE: 1-g SAR Simultaneous Tx Combination of LTE Band 4 and WLAN 2.4G.

Test Position		Scaled SAR _{MAX}		Σ 1-g SAR (W/Kg)	SPLSR	Remark
		LTE Band 5	WLAN 2.4G			
Head	Left Cheek	0.780	0.403	1.183	N/A	N/A
	Left Tilt 15 Degree	0.400	0.285	0.685	N/A	N/A

	Right Cheek	0.687	0.326	1.014	N/A	N/A
	Right Tilt 15 Degree	0.331	0.211	0.542	N/A	N/A
Body-Worn	Front Side	0.790	0.079	0.870	N/A	N/A
	Back Side	0.979	0.130	1.110	N/A	N/A
Hotspot	Front Side	0.790	0.079	0.870	N/A	N/A
	Back Side	0.979	0.130	1.110	N/A	N/A
	Left Side	0.751	N/A	0.751	N/A	N/A
	Right Side	0.443	0.031	0.474	N/A	N/A
	Top Side	N/A	0.045	0.045	N/A	N/A
	Bottom Side	0.371	N/A	0.371	N/A	N/A

NOTE: 1-g SAR Simultaneous Tx Combination of LTE Band 5 and WLAN 2.4G.

Test Position		Scaled SAR _{MAX}		Σ 1-g SAR (W/Kg)	SPLSR	Remark
		LTE Band 7	WLAN 2.4G			
Head	Left Cheek	1.194	0.403	1.597	N/A	N/A
	Left Tilt 15 Degree	0.666	0.285	0.951	N/A	N/A
	Right Cheek	0.793	0.326	1.119	N/A	N/A
	Right Tilt 15 Degree	0.592	0.211	0.803	N/A	N/A
Body-Worn	Front Side	0.618	0.079	0.697	N/A	N/A
	Back Side	0.798	0.130	0.929	N/A	N/A
Hotspot	Front Side	0.618	0.079	0.697	N/A	N/A
	Back Side	0.798	0.130	0.929	N/A	N/A
	Left Side	0.623	N/A	0.623	N/A	N/A
	Right Side	0.383	0.031	0.414	N/A	N/A
	Top Side	N/A	0.045	0.045	N/A	N/A
	Bottom Side	0.287	N/A	0.287	N/A	N/A

NOTE: 1-g SAR Simultaneous Tx Combination of LTE Band 7 and WLAN 2.4G.

Test Position		Scaled SAR _{MAX}		Σ 1-g SAR (W/Kg)	SPLSR	Remark
		LTE Band 12	WLAN 2.4G			
Head	Left Cheek	0.541	0.403	0.944	N/A	N/A
	Left Tilt 15 Degree	0.309	0.285	0.594	N/A	N/A
	Right Cheek	0.513	0.326	0.839	N/A	N/A
	Right Tilt 15 Degree	0.260	0.211	0.471	N/A	N/A
Body-Worn	Front Side	0.595	0.079	0.675	N/A	N/A
	Back Side	0.786	0.130	0.916	N/A	N/A
Hotspot	Front Side	0.595	0.079	0.675	N/A	N/A
	Back Side	0.786	0.130	0.916	N/A	N/A

	Left Side	0.573	N/A	0.573	N/A	N/A
	Right Side	0.348	0.031	0.379	N/A	N/A
	Top Side	N/A	0.045	0.045	N/A	N/A
	Bottom Side	0.298	N/A	0.298	N/A	N/A

NOTE: 1-g SAR Simultaneous Tx Combination of LTE Band 12 and WLAN 2.4G.

Test Position		Scaled SAR _{MAX}		Σ 1-g SAR (W/Kg)	SPLSR	Remark
		LTE Band 17	WLAN 2.4G			
Head	Left Cheek	0.421	0.403	0.824	N/A	N/A
	Left Tilt 15 Degree	0.242	0.285	0.526	N/A	N/A
	Right Cheek	0.390	0.326	0.716	N/A	N/A
	Right Tilt 15 Degree	0.192	0.211	0.403	N/A	N/A
Body-Worn	Front Side	0.544	0.079	0.624	N/A	N/A
	Back Side	0.672	0.130	0.803	N/A	N/A
Hotspot	Front Side	0.544	0.079	0.624	N/A	N/A
	Back Side	0.672	0.130	0.803	N/A	N/A
	Left Side	0.531	N/A	0.531	N/A	N/A
	Right Side	0.294	0.031	0.325	N/A	N/A
	Top Side	N/A	0.045	0.045	N/A	N/A
	Bottom Side	0.266	N/A	0.266	N/A	N/A

NOTE: 1-g SAR Simultaneous Tx Combination of LTE Band 17 and WLAN 2.4G.

Test Position		Scaled SAR _{MAX}		Σ 1-g SAR (W/Kg)	SPLSR	Remark
		GSM 850	Bluetooth			
Head	Left Cheek	1.129	0.265	1.394	N/A	N/A
	Left Tilt 15 Degree	0.548	0.265	0.813	N/A	N/A
	Right Cheek	0.783	0.265	1.048	N/A	N/A
	Right Tilt 15 Degree	0.532	0.265	0.797	N/A	N/A
Body-Worn	Front Side	0.714	0.132	0.846	N/A	N/A
	Back Side	1.121	0.132	1.253	N/A	N/A
Hotspot	Front Side	0.714	0.132	0.846	N/A	N/A
	Back Side	1.121	0.132	1.253	N/A	N/A
	Left Side	0.783	N/A	0.783	N/A	N/A
	Right Side	0.499	0.132	0.632	N/A	N/A
	Top Side	N/A	0.132	0.132	N/A	N/A
	Bottom Side	0.406	N/A	0.406	N/A	N/A

NOTE: 1-g SAR Simultaneous Tx Combination of GSM850 and Bluetooth.

Test Position		Scaled SAR _{MAX}		Σ 1-g SAR (W/Kg)	SPLSR	Remark
		GSM 1900	Bluetooth			
Head	Left Cheek	1.183	0.265	1.448	N/A	N/A
	Left Tilt 15 Degree	0.702	0.265	0.967	N/A	N/A
	Right Cheek	0.798	0.265	1.063	N/A	N/A
	Right Tilt 15 Degree	0.583	0.265	0.848	N/A	N/A
Body-Worn	Front Side	0.607	0.132	0.739	N/A	N/A
	Back Side	0.748	0.132	0.880	N/A	N/A
Hotspot	Front Side	0.607	0.132	0.739	N/A	N/A
	Back Side	0.748	0.132	0.880	N/A	N/A
	Left Side	0.530	N/A	0.530	N/A	N/A
	Right Side	0.357	0.132	0.490	N/A	N/A
	Top Side	N/A	0.132	0.132	N/A	N/A
	Bottom Side	0.273	N/A	0.273	N/A	N/A

NOTE: 1-g SAR Simultaneous Tx Combination of GSM1900 and Bluetooth.

Test Position		Scaled SAR _{MAX}		Σ 1-g SAR (W/Kg)	SPLSR	Remark
		WCDMA Band 2	Bluetooth			
Head	Left Cheek	0.902	0.265	1.167	N/A	N/A
	Left Tilt 15 Degree	0.490	0.265	0.755	N/A	N/A
	Right Cheek	0.791	0.265	1.056	N/A	N/A
	Right Tilt 15 Degree	0.393	0.265	0.658	N/A	N/A
Body-Worn	Front Side	0.533	0.132	0.666	N/A	N/A
	Back Side	0.700	0.132	0.832	N/A	N/A
Hotspot	Front Side	0.533	0.132	0.666	N/A	N/A
	Back Side	0.700	0.132	0.832	N/A	N/A
	Left Side	0.560	N/A	0.560	N/A	N/A
	Right Side	0.331	0.132	0.464	N/A	N/A
	Top Side	N/A	0.132	0.132	N/A	N/A
	Bottom Side	0.266	N/A	0.266	N/A	N/A

NOTE: 1-g SAR Simultaneous Tx Combination of WCDMA Band 2 and Bluetooth.

Test Position		Scaled SAR _{MAX}		Σ 1-g SAR (W/Kg)	SPLSR	Remark
		WCDMA Band 4	Bluetooth			
Head	Left Cheek	0.749	0.265	1.014	N/A	N/A
	Left Tilt 15 Degree	0.394	0.265	0.659	N/A	N/A
	Right Cheek	0.684	0.265	0.949	N/A	N/A

	Right Tilt 15 Degree	0.336	0.265	0.601	N/A	N/A
Body-Worn	Front Side	0.355	0.132	0.488	N/A	N/A
	Back Side	0.465	0.132	0.597	N/A	N/A
Hotspot	Front Side	0.355	0.132	0.488	N/A	N/A
	Back Side	0.465	0.132	0.597	N/A	N/A
	Left Side	0.368	N/A	0.368	N/A	N/A
	Right Side	0.229	0.132	0.361	N/A	N/A
	Top Side	N/A	0.132	0.132	N/A	N/A
	Bottom Side	0.173	N/A	0.173	N/A	N/A

NOTE: 1-g SAR Simultaneous Tx Combination of WCDMA Band 4 and Bluetooth.

Test Position		Scaled SAR _{MAX}		Σ 1-g SAR (W/Kg)	SPLSR	Remark
		WCDMA Band 5	Bluetooth			
Head	Left Cheek	0.739	0.265	1.004	N/A	N/A
	Left Tilt 15 Degree	0.408	0.265	0.673	N/A	N/A
	Right Cheek	0.634	0.265	0.899	N/A	N/A
	Right Tilt 15 Degree	0.315	0.265	0.580	N/A	N/A
Body-Worn	Front Side	0.708	0.132	0.841	N/A	N/A
	Back Side	0.929	0.132	1.061	N/A	N/A
Hotspot	Front Side	0.708	0.132	0.841	N/A	N/A
	Back Side	0.929	0.132	1.061	N/A	N/A
	Left Side	0.724	N/A	0.724	N/A	N/A
	Right Side	0.410	0.132	0.543	N/A	N/A
	Top Side	N/A	0.132	0.132	N/A	N/A
	Bottom Side	0.313	N/A	0.313	N/A	N/A

NOTE: 1-g SAR Simultaneous Tx Combination of WCDMA Band 5 and Bluetooth.

Test Position		Scaled SAR _{MAX}		Σ 1-g SAR (W/Kg)	SPLSR	Remark
		LTE Band 2	Bluetooth			
Head	Left Cheek	0.797	0.265	1.062	N/A	N/A
	Left Tilt 15 Degree	0.493	0.265	0.758	N/A	N/A
	Right Cheek	0.754	0.265	1.019	N/A	N/A
	Right Tilt 15 Degree	0.353	0.265	0.618	N/A	N/A
Body-Worn	Front Side	0.770	0.132	0.903	N/A	N/A
	Back Side	1.188	0.132	1.321	N/A	N/A
Hotspot	Front Side	0.770	0.132	0.903	N/A	N/A
	Back Side	1.188	0.132	1.321	N/A	N/A
	Left Side	0.703	N/A	0.703	N/A	N/A

	Right Side	0.543	0.132	0.675	N/A	N/A
	Top Side	N/A	0.132	0.132	N/A	N/A
	Bottom Side	0.483	N/A	0.483	N/A	N/A

NOTE: 1-g SAR Simultaneous Tx Combination of LTE Band 2 and Bluetooth.

Test Position		Scaled SAR _{MAX}		Σ 1-g SAR (W/Kg)	SPLSR	Remark
		LTE Band 4	Bluetooth			
Head	Left Cheek	0.708	0.265	0.973	N/A	N/A
	Left Tilt 15 Degree	0.365	0.265	0.630	N/A	N/A
	Right Cheek	0.657	0.265	0.922	N/A	N/A
	Right Tilt 15 Degree	0.297	0.265	0.561	N/A	N/A
Body-Worn	Front Side	0.347	0.132	0.479	N/A	N/A
	Back Side	0.415	0.132	0.548	N/A	N/A
Hotspot	Front Side	0.347	0.132	0.479	N/A	N/A
	Back Side	0.415	0.132	0.548	N/A	N/A
	Left Side	0.298	N/A	0.298	N/A	N/A
	Right Side	0.179	0.132	0.312	N/A	N/A
	Top Side	N/A	0.132	0.132	N/A	N/A
	Bottom Side	0.141	N/A	0.141	N/A	N/A

NOTE: 1-g SAR Simultaneous Tx Combination of LTE Band 4 and Bluetooth.

Test Position		Scaled SAR _{MAX}		Σ 1-g SAR (W/Kg)	SPLSR	Remark
		LTE Band 5	Bluetooth			
Head	Left Cheek	0.780	0.265	1.045	N/A	N/A
	Left Tilt 15 Degree	0.400	0.265	0.665	N/A	N/A
	Right Cheek	0.687	0.265	0.952	N/A	N/A
	Right Tilt 15 Degree	0.331	0.265	0.596	N/A	N/A
Body-Worn	Front Side	0.790	0.132	0.923	N/A	N/A
	Back Side	0.979	0.132	1.112	N/A	N/A
Hotspot	Front Side	0.790	0.132	0.923	N/A	N/A
	Back Side	0.979	0.132	1.112	N/A	N/A
	Left Side	0.751	N/A	0.751	N/A	N/A
	Right Side	0.443	0.132	0.575	N/A	N/A
	Top Side	N/A	0.132	0.132	N/A	N/A
	Bottom Side	0.371	N/A	0.371	N/A	N/A

NOTE: 1-g SAR Simultaneous Tx Combination of LTE Band 5 and Bluetooth.

Test Position	Scaled SAR _{MAX}		Σ 1-g SAR	SPLSR	Remark
---------------	---------------------------	--	-----------	-------	--------

		LTE Band 7	Bluetooth	(W/Kg)		
Head	Left Cheek	1.194	0.265	1.459	N/A	N/A
	Left Tilt 15 Degree	0.666	0.265	0.931	N/A	N/A
	Right Cheek	0.793	0.265	1.058	N/A	N/A
	Right Tilt 15 Degree	0.592	0.265	0.857	N/A	N/A
Body-Worn	Front Side	0.618	0.132	0.750	N/A	N/A
	Back Side	0.798	0.132	0.931	N/A	N/A
Hotspot	Front Side	0.618	0.132	0.750	N/A	N/A
	Back Side	0.798	0.132	0.931	N/A	N/A
	Left Side	0.623	N/A	0.623	N/A	N/A
	Right Side	0.383	0.132	0.515	N/A	N/A
	Top Side	N/A	0.132	0.132	N/A	N/A
	Bottom Side	0.287	N/A	0.287	N/A	N/A

NOTE: 1-g SAR Simultaneous Tx Combination of LTE Band 7 and Bluetooth.

Test Position		Scaled SAR _{MAX}		Σ 1-g SAR (W/Kg)	SPLSR	Remark
		LTE Band 12	Bluetooth			
Head	Left Cheek	0.541	0.265	0.806	N/A	N/A
	Left Tilt 15 Degree	0.309	0.265	0.574	N/A	N/A
	Right Cheek	0.513	0.265	0.777	N/A	N/A
	Right Tilt 15 Degree	0.260	0.265	0.525	N/A	N/A
Body-Worn	Front Side	0.595	0.132	0.728	N/A	N/A
	Back Side	0.786	0.132	0.918	N/A	N/A
Hotspot	Front Side	0.595	0.132	0.728	N/A	N/A
	Back Side	0.786	0.132	0.918	N/A	N/A
	Left Side	0.573	N/A	0.573	N/A	N/A
	Right Side	0.348	0.132	0.481	N/A	N/A
	Top Side	N/A	0.132	0.132	N/A	N/A
	Bottom Side	0.298	N/A	0.298	N/A	N/A

NOTE: 1-g SAR Simultaneous Tx Combination of LTE Band 12 and Bluetooth.

Test Position		Scaled SAR _{MAX}		Σ 1-g SAR (W/Kg)	SPLSR	Remark
		LTE Band 17	Bluetooth			
Head	Left Cheek	0.421	0.265	0.686	N/A	N/A
	Left Tilt 15 Degree	0.242	0.265	0.507	N/A	N/A
	Right Cheek	0.390	0.265	0.655	N/A	N/A
	Right Tilt 15	0.192	0.265	0.457	N/A	N/A

	Degree					
Body-Worn	Front Side	0.544	0.132	0.677	N/A	N/A
	Back Side	0.672	0.132	0.805	N/A	N/A
Hotspot	Front Side	0.544	0.132	0.677	N/A	N/A
	Back Side	0.672	0.132	0.805	N/A	N/A
	Left Side	0.531	N/A	0.531	N/A	N/A
	Right Side	0.294	0.132	0.426	N/A	N/A
	Top Side	N/A	0.132	0.132	N/A	N/A
	Bottom Side	0.266	N/A	0.266	N/A	N/A

NOTE: 1-g SAR Simultaneous Tx Combination of LTE Band 17 and Bluetooth.

Test Position		Scaled SAR _{MAX}		Σ 1-g SAR (W/Kg)	SPLSR	Remark
		GSM 850	WLAN 5.2G			
Head	Left Cheek	1.129	0.305	1.434	N/A	N/A
	Left Tilt 15 Degree	0.548	0.179	0.727	N/A	N/A
	Right Cheek	0.783	0.284	1.067	N/A	N/A
	Right Tilt 15 Degree	0.532	0.150	0.683	N/A	N/A
Body-Worn	Front Side	0.714	0.143	0.857	N/A	N/A
	Back Side	1.121	0.235	1.356	N/A	N/A
Hotspot	Front Side	0.714	0.143	0.857	N/A	N/A
	Back Side	1.121	0.235	1.356	N/A	N/A
	Left Side	0.783	N/A	0.783	N/A	N/A
	Right Side	0.499	0.048	0.547	N/A	N/A
	Top Side	N/A	0.072	0.072	N/A	N/A
	Bottom Side	0.406	N/A	0.406	N/A	N/A

NOTE: 1-g SAR Simultaneous Tx Combination of GSM850 and WLAN 5.2G.

Test Position		Scaled SAR _{MAX}		Σ 1-g SAR (W/Kg)	SPLSR	Remark
		GSM 1900	WLAN 5.2G			
Head	Left Cheek	1.183	0.305	1.488	N/A	N/A
	Left Tilt 15 Degree	0.702	0.179	0.881	N/A	N/A
	Right Cheek	0.798	0.284	1.082	N/A	N/A
	Right Tilt 15 Degree	0.583	0.150	0.734	N/A	N/A
Body-Worn	Front Side	0.607	0.143	0.750	N/A	N/A
	Back Side	0.748	0.235	0.983	N/A	N/A
Hotspot	Front Side	0.607	0.143	0.750	N/A	N/A
	Back Side	0.748	0.235	0.983	N/A	N/A
	Left Side	0.530	N/A	0.530	N/A	N/A
	Right Side	0.357	0.048	0.405	N/A	N/A

	Top Side	N/A	0.072	0.072	N/A	N/A
	Bottom Side	0.273	N/A	0.273	N/A	N/A

NOTE: 1-g SAR Simultaneous Tx Combination of GSM1900 and WLAN 5.2G.

Test Position		Scaled SAR _{MAX}		Σ 1-g SAR (W/Kg)	SPLSR	Remark
		WCDMA Band 2	WLAN 5.2G			
Head	Left Cheek	0.902	0.305	1.207	N/A	N/A
	Left Tilt 15 Degree	0.490	0.179	0.669	N/A	N/A
	Right Cheek	0.791	0.284	1.075	N/A	N/A
	Right Tilt 15 Degree	0.393	0.150	0.544	N/A	N/A
Body-Worn	Front Side	0.533	0.143	0.677	N/A	N/A
	Back Side	0.700	0.235	0.934	N/A	N/A
Hotspot	Front Side	0.533	0.143	0.677	N/A	N/A
	Back Side	0.700	0.235	0.934	N/A	N/A
	Left Side	0.560	N/A	0.560	N/A	N/A
	Right Side	0.331	0.048	0.379	N/A	N/A
	Top Side	N/A	0.072	0.072	N/A	N/A
	Bottom Side	0.266	N/A	0.266	N/A	N/A

NOTE: 1-g SAR Simultaneous Tx Combination of WCDMA Band 2 and WLAN 5.2G.

Test Position		Scaled SAR _{MAX}		Σ 1-g SAR (W/Kg)	SPLSR	Remark
		WCDMA Band 4	WLAN 5.2G			
Head	Left Cheek	0.749	0.305	1.054	N/A	N/A
	Left Tilt 15 Degree	0.394	0.179	0.572	N/A	N/A
	Right Cheek	0.684	0.284	0.968	N/A	N/A
	Right Tilt 15 Degree	0.336	0.150	0.486	N/A	N/A
Body-Worn	Front Side	0.355	0.143	0.499	N/A	N/A
	Back Side	0.465	0.235	0.700	N/A	N/A
Hotspot	Front Side	0.355	0.143	0.499	N/A	N/A
	Back Side	0.465	0.235	0.700	N/A	N/A
	Left Side	0.368	N/A	0.368	N/A	N/A
	Right Side	0.229	0.048	0.276	N/A	N/A
	Top Side	N/A	0.072	0.072	N/A	N/A
	Bottom Side	0.173	N/A	0.173	N/A	N/A

NOTE: 1-g SAR Simultaneous Tx Combination of WCDMA Band 4 and WLAN 5.2G.

Test Position		Scaled SAR _{MAX}		Σ 1-g SAR (W/Kg)	SPLSR	Remark
		WCDMA	WLAN 5.2G			

		Band 5				
Head	Left Cheek	0.739	0.305	1.044	N/A	N/A
	Left Tilt 15 Degree	0.408	0.179	0.586	N/A	N/A
	Right Cheek	0.634	0.284	0.918	N/A	N/A
	Right Tilt 15 Degree	0.315	0.150	0.465	N/A	N/A
Body-Worn	Front Side	0.708	0.143	0.852	N/A	N/A
	Back Side	0.929	0.235	1.164	N/A	N/A
Hotspot	Front Side	0.708	0.143	0.852	N/A	N/A
	Back Side	0.929	0.235	1.164	N/A	N/A
	Left Side	0.724	N/A	0.724	N/A	N/A
	Right Side	0.410	0.048	0.458	N/A	N/A
	Top Side	N/A	0.072	0.072	N/A	N/A
	Bottom Side	0.313	N/A	0.313	N/A	N/A

NOTE: 1-g SAR Simultaneous Tx Combination of WCDMA Band 5 and WLAN 5.2G.

Test Position		Scaled SAR _{MAX}		Σ 1-g SAR (W/Kg)	SPLSR	Remark
		LTE Band 2	WLAN 5.2G			
Head	Left Cheek	0.797	0.305	1.102	N/A	N/A
	Left Tilt 15 Degree	0.493	0.179	0.672	N/A	N/A
	Right Cheek	0.754	0.284	1.038	N/A	N/A
	Right Tilt 15 Degree	0.353	0.150	0.504	N/A	N/A
Body-Worn	Front Side	0.770	0.143	0.914	N/A	N/A
	Back Side	1.188	0.235	1.423	N/A	N/A
Hotspot	Front Side	0.770	0.143	0.914	N/A	N/A
	Back Side	1.188	0.235	1.423	N/A	N/A
	Left Side	0.703	N/A	0.703	N/A	N/A
	Right Side	0.543	0.048	0.591	N/A	N/A
	Top Side	N/A	0.072	0.072	N/A	N/A
	Bottom Side	0.483	N/A	0.483	N/A	N/A

NOTE: 1-g SAR Simultaneous Tx Combination of LTE Band 2 and WLAN 5.2G.

Test Position		Scaled SAR _{MAX}		Σ 1-g SAR (W/Kg)	SPLSR	Remark
		LTE Band 4	WLAN 5.2G			
Head	Left Cheek	0.708	0.305	1.013	N/A	N/A
	Left Tilt 15 Degree	0.365	0.179	0.543	N/A	N/A
	Right Cheek	0.657	0.284	0.941	N/A	N/A
	Right Tilt 15 Degree	0.297	0.150	0.447	N/A	N/A
Body-Worn	Front Side	0.347	0.143	0.490	N/A	N/A

	Back Side	0.415	0.235	0.650	N/A	N/A
Hotspot	Front Side	0.347	0.143	0.490	N/A	N/A
	Back Side	0.415	0.235	0.650	N/A	N/A
	Left Side	0.298	N/A	0.298	N/A	N/A
	Right Side	0.179	0.048	0.227	N/A	N/A
	Top Side	N/A	0.072	0.072	N/A	N/A
	Bottom Side	0.141	N/A	0.141	N/A	N/A

NOTE: 1-g SAR Simultaneous Tx Combination of LTE Band 4 and WLAN 5.2G.

Test Position		Scaled SAR _{MAX}		Σ 1-g SAR (W/Kg)	SPLSR	Remark
		LTE Band 5	WLAN 5.2G			
Head	Left Cheek	0.780	0.305	1.085	N/A	N/A
	Left Tilt 15 Degree	0.400	0.179	0.579	N/A	N/A
	Right Cheek	0.687	0.284	0.971	N/A	N/A
	Right Tilt 15 Degree	0.331	0.150	0.481	N/A	N/A
Body-Worn	Front Side	0.790	0.143	0.934	N/A	N/A
	Back Side	0.979	0.235	1.214	N/A	N/A
Hotspot	Front Side	0.790	0.143	0.934	N/A	N/A
	Back Side	0.979	0.235	1.214	N/A	N/A
	Left Side	0.751	N/A	0.751	N/A	N/A
	Right Side	0.443	0.048	0.491	N/A	N/A
	Top Side	N/A	0.072	0.072	N/A	N/A
	Bottom Side	0.371	N/A	0.371	N/A	N/A

NOTE: 1-g SAR Simultaneous Tx Combination of LTE Band 5 and WLAN 5.2G.

Test Position		Scaled SAR _{MAX}		Σ 1-g SAR (W/Kg)	SPLSR	Remark
		LTE Band 7	WLAN 5.2G			
Head	Left Cheek	1.194	0.305	1.499	N/A	N/A
	Left Tilt 15 Degree	0.666	0.179	0.845	N/A	N/A
	Right Cheek	0.793	0.284	1.077	N/A	N/A
	Right Tilt 15 Degree	0.592	0.150	0.742	N/A	N/A
Body-Worn	Front Side	0.618	0.143	0.761	N/A	N/A
	Back Side	0.798	0.235	1.033	N/A	N/A
Hotspot	Front Side	0.618	0.143	0.761	N/A	N/A
	Back Side	0.798	0.235	1.033	N/A	N/A
	Left Side	0.623	N/A	0.623	N/A	N/A
	Right Side	0.383	0.048	0.431	N/A	N/A

	Top Side	N/A	0.072	0.072	N/A	N/A
	Bottom Side	0.287	N/A	0.287	N/A	N/A

NOTE: 1-g SAR Simultaneous Tx Combination of LTE Band 7 and WLAN 5.2G.

Test Position		Scaled SAR _{MAX}		Σ 1-g SAR (W/Kg)	SPLSR	Remark
		LTE Band 12	WLAN 5.2G			
Head	Left Cheek	0.541	0.305	0.846	N/A	N/A
	Left Tilt 15 Degree	0.309	0.179	0.488	N/A	N/A
	Right Cheek	0.513	0.284	0.797	N/A	N/A
	Right Tilt 15 Degree	0.260	0.150	0.411	N/A	N/A
Body-Worn	Front Side	0.595	0.143	0.739	N/A	N/A
	Back Side	0.786	0.235	1.020	N/A	N/A
Hotspot	Front Side	0.595	0.143	0.739	N/A	N/A
	Back Side	0.786	0.235	1.020	N/A	N/A
	Left Side	0.573	N/A	0.573	N/A	N/A
	Right Side	0.348	0.048	0.396	N/A	N/A
	Top Side	N/A	0.072	0.072	N/A	N/A
	Bottom Side	0.298	N/A	0.298	N/A	N/A

NOTE: 1-g SAR Simultaneous Tx Combination of LTE Band 12 and WLAN 5.2G.

Test Position		Scaled SAR _{MAX}		Σ 1-g SAR (W/Kg)	SPLSR	Remark
		LTE Band 17	WLAN 5.2G			
Head	Left Cheek	0.421	0.305	0.726	N/A	N/A
	Left Tilt 15 Degree	0.242	0.179	0.420	N/A	N/A
	Right Cheek	0.390	0.284	0.674	N/A	N/A
	Right Tilt 15 Degree	0.192	0.150	0.343	N/A	N/A
Body-Worn	Front Side	0.544	0.143	0.688	N/A	N/A
	Back Side	0.672	0.235	0.907	N/A	N/A
Hotspot	Front Side	0.544	0.143	0.688	N/A	N/A
	Back Side	0.672	0.235	0.907	N/A	N/A
	Left Side	0.531	N/A	0.531	N/A	N/A
	Right Side	0.294	0.048	0.342	N/A	N/A
	Top Side	N/A	0.072	0.072	N/A	N/A
	Bottom Side	0.266	N/A	0.266	N/A	N/A

NOTE: 1-g SAR Simultaneous Tx Combination of LTE Band 17 and WLAN 5.2G.

Test Position		Scaled SAR _{MAX}		Σ 1-g SAR (W/Kg)	SPLSR	Remark
		GSM 850	WLAN 5.8G			
Head	Left Cheek	1.129	0.396	1.525	N/A	N/A
	Left Tilt 15 Degree	0.548	0.245	0.793	N/A	N/A
	Right Cheek	0.783	0.311	1.094	N/A	N/A
	Right Tilt 15 Degree	0.532	0.210	0.743	N/A	N/A
Body-Worn	Front Side	0.714	0.222	0.936	N/A	N/A
	Back Side	1.121	0.360	1.481	N/A	N/A
Hotspot	Front Side	0.714	0.222	0.936	N/A	N/A
	Back Side	1.121	0.360	1.481	N/A	N/A
	Left Side	0.783	N/A	0.783	N/A	N/A
	Right Side	0.499	0.086	0.585	N/A	N/A
	Top Side	N/A	0.118	0.118	N/A	N/A
	Bottom Side	0.406	N/A	0.406	N/A	N/A

NOTE: 1-g SAR Simultaneous Tx Combination of GSM850 and WLAN 5.8G.

Test Position		Scaled SAR _{MAX}		Σ 1-g SAR (W/Kg)	SPLSR	Remark
		GSM 1900	WLAN 5.8G			
Head	Left Cheek	1.183	0.396	1.578	N/A	N/A
	Left Tilt 15 Degree	0.702	0.245	0.947	N/A	N/A
	Right Cheek	0.798	0.311	1.109	N/A	N/A
	Right Tilt 15 Degree	0.583	0.210	0.794	N/A	N/A
Body-Worn	Front Side	0.607	0.222	0.829	N/A	N/A
	Back Side	0.748	0.360	1.107	N/A	N/A
Hotspot	Front Side	0.607	0.222	0.829	N/A	N/A
	Back Side	0.748	0.360	1.107	N/A	N/A
	Left Side	0.530	N/A	0.530	N/A	N/A
	Right Side	0.357	0.086	0.443	N/A	N/A
	Top Side	N/A	0.118	0.118	N/A	N/A
	Bottom Side	0.273	N/A	0.273	N/A	N/A

NOTE: 1-g SAR Simultaneous Tx Combination of GSM1900 and WLAN 5.8G.

Test Position		Scaled SAR _{MAX}		Σ 1-g SAR (W/Kg)	SPLSR	Remark
		WCDMA Band 2	WLAN 5.8G			
Head	Left Cheek	0.902	0.396	1.297	N/A	N/A
	Left Tilt 15 Degree	0.490	0.245	0.735	N/A	N/A
	Right Cheek	0.791	0.311	1.102	N/A	N/A
	Right Tilt 15 Degree	0.393	0.210	0.604	N/A	N/A

Body-Worn	Front Side	0.533	0.222	0.755	N/A	N/A
	Back Side	0.700	0.360	1.059	N/A	N/A
Hotspot	Front Side	0.533	0.222	0.755	N/A	N/A
	Back Side	0.700	0.360	1.059	N/A	N/A
	Left Side	0.560	N/A	0.560	N/A	N/A
	Right Side	0.331	0.086	0.417	N/A	N/A
	Top Side	N/A	0.118	0.118	N/A	N/A
	Bottom Side	0.266	N/A	0.266	N/A	N/A

NOTE: 1-g SAR Simultaneous Tx Combination of WCDMA Band 2 and WLAN 5.8G.

Test Position		Scaled SAR _{MAX}		Σ 1-g SAR (W/Kg)	SPLSR	Remark
		WCDMA Band 4	WLAN 5.8G			
Head	Left Cheek	0.749	0.396	1.144	N/A	N/A
	Left Tilt 15 Degree	0.394	0.245	0.639	N/A	N/A
	Right Cheek	0.684	0.311	0.995	N/A	N/A
	Right Tilt 15 Degree	0.336	0.210	0.546	N/A	N/A
Body-Worn	Front Side	0.355	0.222	0.577	N/A	N/A
	Back Side	0.465	0.360	0.824	N/A	N/A
Hotspot	Front Side	0.355	0.222	0.577	N/A	N/A
	Back Side	0.465	0.360	0.824	N/A	N/A
	Left Side	0.368	N/A	0.368	N/A	N/A
	Right Side	0.229	0.086	0.314	N/A	N/A
	Top Side	N/A	0.118	0.118	N/A	N/A
	Bottom Side	0.173	N/A	0.173	N/A	N/A

NOTE: 1-g SAR Simultaneous Tx Combination of WCDMA Band 4 and WLAN 5.8G.

Test Position		Scaled SAR _{MAX}		Σ 1-g SAR (W/Kg)	SPLSR	Remark
		WCDMA Band 5	WLAN 5.8G			
Head	Left Cheek	0.739	0.396	1.135	N/A	N/A
	Left Tilt 15 Degree	0.408	0.245	0.653	N/A	N/A
	Right Cheek	0.634	0.311	0.945	N/A	N/A
	Right Tilt 15 Degree	0.315	0.210	0.525	N/A	N/A
Body-Worn	Front Side	0.708	0.222	0.930	N/A	N/A
	Back Side	0.929	0.360	1.288	N/A	N/A
Hotspot	Front Side	0.708	0.222	0.930	N/A	N/A
	Back Side	0.929	0.360	1.288	N/A	N/A
	Left Side	0.724	N/A	0.724	N/A	N/A
	Right Side	0.410	0.086	0.496	N/A	N/A

	Top Side	N/A	0.118	0.118	N/A	N/A
	Bottom Side	0.313	N/A	0.313	N/A	N/A

NOTE: 1-g SAR Simultaneous Tx Combination of WCDMA Band 5 and WLAN 5.8G.

Test Position		Scaled SAR _{MAX}		Σ 1-g SAR (W/Kg)	SPLSR	Remark
		LTE Band 2	WLAN 5.8G			
Head	Left Cheek	0.797	0.396	1.193	N/A	N/A
	Left Tilt 15 Degree	0.493	0.245	0.739	N/A	N/A
	Right Cheek	0.754	0.311	1.065	N/A	N/A
	Right Tilt 15 Degree	0.353	0.210	0.564	N/A	N/A
Body-Worn	Front Side	0.770	0.222	0.992	N/A	N/A
	Back Side	1.188	0.360	1.548	N/A	N/A
Hotspot	Front Side	0.770	0.222	0.992	N/A	N/A
	Back Side	1.188	0.360	1.548	N/A	N/A
	Left Side	0.703	N/A	0.703	N/A	N/A
	Right Side	0.543	0.086	0.628	N/A	N/A
	Top Side	N/A	0.118	0.118	N/A	N/A
	Bottom Side	0.483	N/A	0.483	N/A	N/A

NOTE: 1-g SAR Simultaneous Tx Combination of LTE Band 2 and WLAN 5.8G.

Test Position		Scaled SAR _{MAX}		Σ 1-g SAR (W/Kg)	SPLSR	Remark
		LTE Band 4	WLAN 5.8G			
Head	Left Cheek	0.708	0.396	1.103	N/A	N/A
	Left Tilt 15 Degree	0.365	0.245	0.610	N/A	N/A
	Right Cheek	0.657	0.311	0.968	N/A	N/A
	Right Tilt 15 Degree	0.297	0.210	0.507	N/A	N/A
Body-Worn	Front Side	0.347	0.222	0.569	N/A	N/A
	Back Side	0.415	0.360	0.775	N/A	N/A
Hotspot	Front Side	0.347	0.222	0.569	N/A	N/A
	Back Side	0.415	0.360	0.775	N/A	N/A
	Left Side	0.298	N/A	0.298	N/A	N/A
	Right Side	0.179	0.086	0.265	N/A	N/A
	Top Side	N/A	0.118	0.118	N/A	N/A
	Bottom Side	0.141	N/A	0.141	N/A	N/A

NOTE: 1-g SAR Simultaneous Tx Combination of LTE Band 4 and WLAN 5.8G.

Test Position		Scaled SAR _{MAX}		Σ 1-g SAR (W/Kg)	SPLSR	Remark
		LTE Band 5	WLAN 5.8G			
Head	Left Cheek	0.780	0.396	1.175	N/A	N/A

	Left Tilt 15 Degree	0.400	0.245	0.645	N/A	N/A
	Right Cheek	0.687	0.311	0.998	N/A	N/A
	Right Tilt 15 Degree	0.331	0.210	0.541	N/A	N/A
Body-Worn	Front Side	0.790	0.222	1.012	N/A	N/A
	Back Side	0.979	0.360	1.339	N/A	N/A
Hotspot	Front Side	0.790	0.222	1.012	N/A	N/A
	Back Side	0.979	0.360	1.339	N/A	N/A
	Left Side	0.751	N/A	0.751	N/A	N/A
	Right Side	0.443	0.086	0.528	N/A	N/A
	Top Side	N/A	0.118	0.118	N/A	N/A
	Bottom Side	0.371	N/A	0.371	N/A	N/A

NOTE: 1-g SAR Simultaneous Tx Combination of LTE Band 5 and WLAN 5.8G.

Test Position		Scaled SAR _{MAX}		Σ 1-g SAR (W/Kg)	SPLSR	Remark
		LTE Band 7	WLAN 5.8G			
Head	Left Cheek	1.194	0.396	1.589	N/A	N/A
	Left Tilt 15 Degree	0.666	0.245	0.911	N/A	N/A
	Right Cheek	0.793	0.311	1.104	N/A	N/A
	Right Tilt 15 Degree	0.592	0.210	0.802	N/A	N/A
Body-Worn	Front Side	0.618	0.222	0.840	N/A	N/A
	Back Side	0.798	0.360	1.158	N/A	N/A
Hotspot	Front Side	0.618	0.222	0.840	N/A	N/A
	Back Side	0.798	0.360	1.158	N/A	N/A
	Left Side	0.623	N/A	0.623	N/A	N/A
	Right Side	0.383	0.086	0.468	N/A	N/A
	Top Side	N/A	0.118	0.118	N/A	N/A
	Bottom Side	0.287	N/A	0.287	N/A	N/A

NOTE: 1-g SAR Simultaneous Tx Combination of LTE Band 7 and WLAN 5.8G.

Test Position		Scaled SAR _{MAX}		Σ 1-g SAR (W/Kg)	SPLSR	Remark
		LTE Band 12	WLAN 5.8G			
Head	Left Cheek	0.541	0.396	0.936	N/A	N/A
	Left Tilt 15 Degree	0.309	0.245	0.554	N/A	N/A
	Right Cheek	0.513	0.311	0.823	N/A	N/A
	Right Tilt 15 Degree	0.260	0.210	0.471	N/A	N/A
Body-Worn	Front Side	0.595	0.222	0.817	N/A	N/A
	Back Side	0.786	0.360	1.145	N/A	N/A

Hotspot	Front Side	0.595	0.222	0.817	N/A	N/A
	Back Side	0.786	0.360	1.145	N/A	N/A
	Left Side	0.573	N/A	0.573	N/A	N/A
	Right Side	0.348	0.086	0.434	N/A	N/A
	Top Side	N/A	0.118	0.118	N/A	N/A
	Bottom Side	0.298	N/A	0.298	N/A	N/A

NOTE: 1-g SAR Simultaneous Tx Combination of LTE Band 12 and WLAN 5.8G.

Test Position		Scaled SAR _{MAX}		Σ 1-g SAR (W/Kg)	SPLSR	Remark
		LTE Band 17	WLAN 5.8G			
Head	Left Cheek	0.421	0.396	0.817	N/A	N/A
	Left Tilt 15 Degree	0.242	0.245	0.487	N/A	N/A
	Right Cheek	0.390	0.311	0.701	N/A	N/A
	Right Tilt 15 Degree	0.192	0.210	0.403	N/A	N/A
Body-Worn	Front Side	0.544	0.222	0.766	N/A	N/A
	Back Side	0.672	0.360	1.032	N/A	N/A
Hotspot	Front Side	0.544	0.222	0.766	N/A	N/A
	Back Side	0.672	0.360	1.032	N/A	N/A
	Left Side	0.531	N/A	0.531	N/A	N/A
	Right Side	0.294	0.086	0.380	N/A	N/A
	Top Side	N/A	0.118	0.118	N/A	N/A
	Bottom Side	0.266	N/A	0.266	N/A	N/A

NOTE: 1-g SAR Simultaneous Tx Combination of LTE Band 17 and WLAN 5.8G.

11. Appendix A. Photo documentation

Refer to appendix Test Setup photo---SAR

12. Appendix B. System Check Plots

Table of contents
MEASUREMENT 1 System Performance Check - SID750 - Head
MEASUREMENT 2 System Performance Check - SID750 - Body
MEASUREMENT 3 System Performance Check - SID835 - Head
MEASUREMENT 4 System Performance Check - SID835 - Body
MEASUREMENT 5 System Performance Check - SID1800 - Head
MEASUREMENT 6 System Performance Check - SID1800 - Body
MEASUREMENT 7 System Performance Check - SID1900 - Head
MEASUREMENT 8 System Performance Check - SID1900 - Body
MEASUREMENT 9 System Performance Check - SID2450 - Head
MEASUREMENT 10 System Performance Check - SID2450 - Body
MEASUREMENT 11 System Performance Check - SID2600 - Head
MEASUREMENT 12 System Performance Check - SID2600 - Body
MEASUREMENT 13 System Performance Check - SID5200 - Head
MEASUREMENT 14 System Performance Check - SID5200 - Body
MEASUREMENT 15 System Performance Check - SID5800 - Head
MEASUREMENT 16 System Performance Check - SID5800 - Body

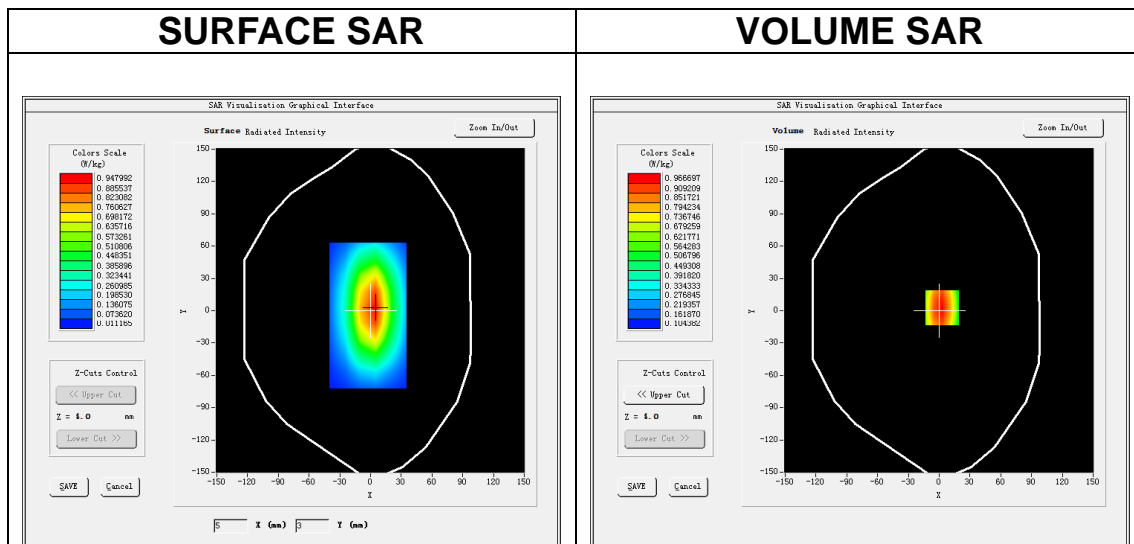
MEASUREMENT 1

A. Experimental conditions.

Area Scan	<u>dx=15mm dy=15mm, h= 5.00 mm</u>
ZoomScan	<u>5x5x7, dx=8mm dy=8mm dz=5mm</u>
Phantom	<u>Validation plane</u>
Device Position	<u>Dipole</u>
Band	<u>CW750</u>
Channels	<u>Middle</u>
Signal	<u>CW (Crest factor: 1.0)</u>

B. SAR Measurement Results

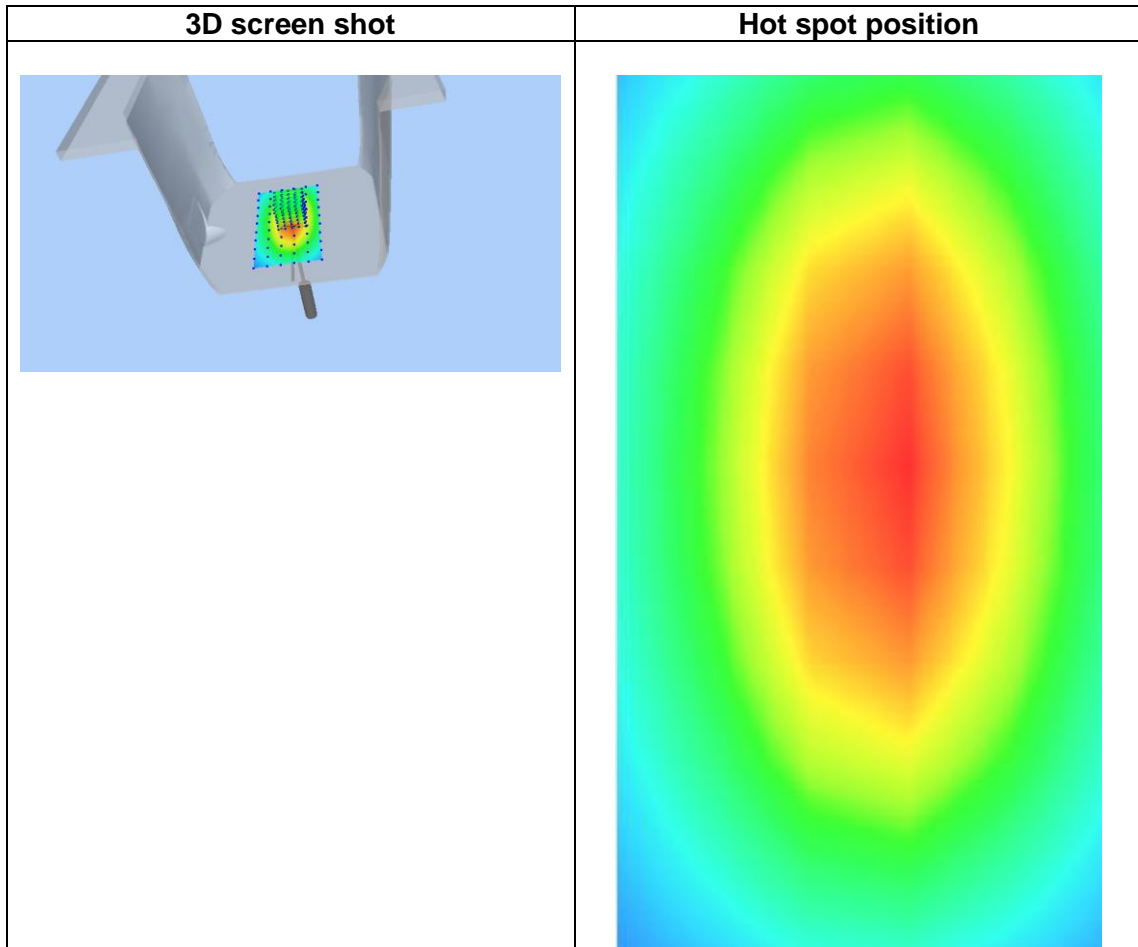
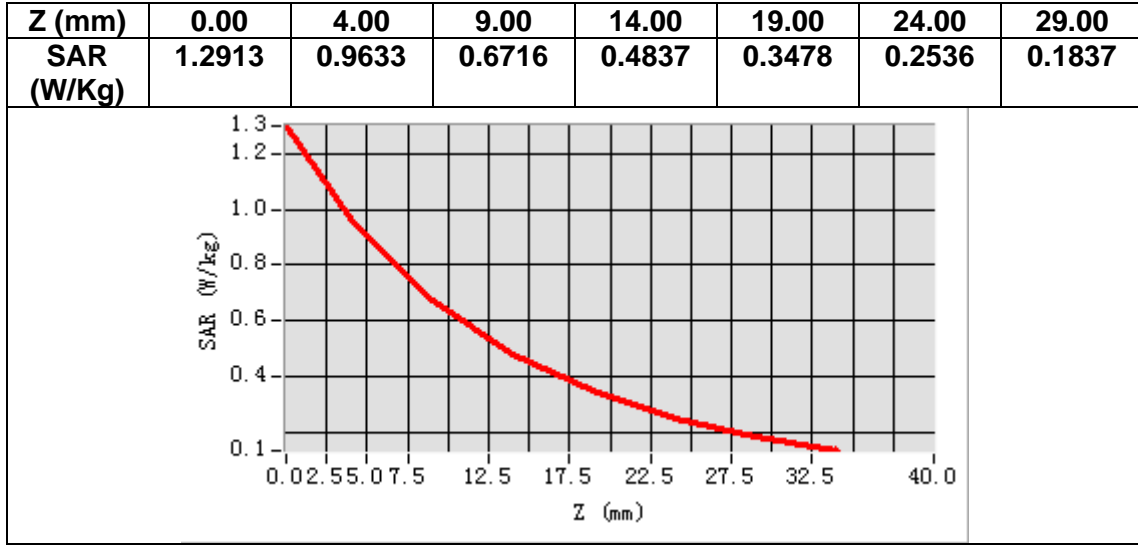
Frequency (MHz)	750.000000
Relative permittivity (real part)	41.233162
Relative permittivity (imaginary part)	21.911263
Conductivity (S/m)	0.912262
Variation (%)	-3.810000



Maximum location: X=3.00, Y=3.00

SAR Peak: 1.30 W/kg

SAR 10g (W/Kg)	0.551218
SAR 1g (W/Kg)	0.853362



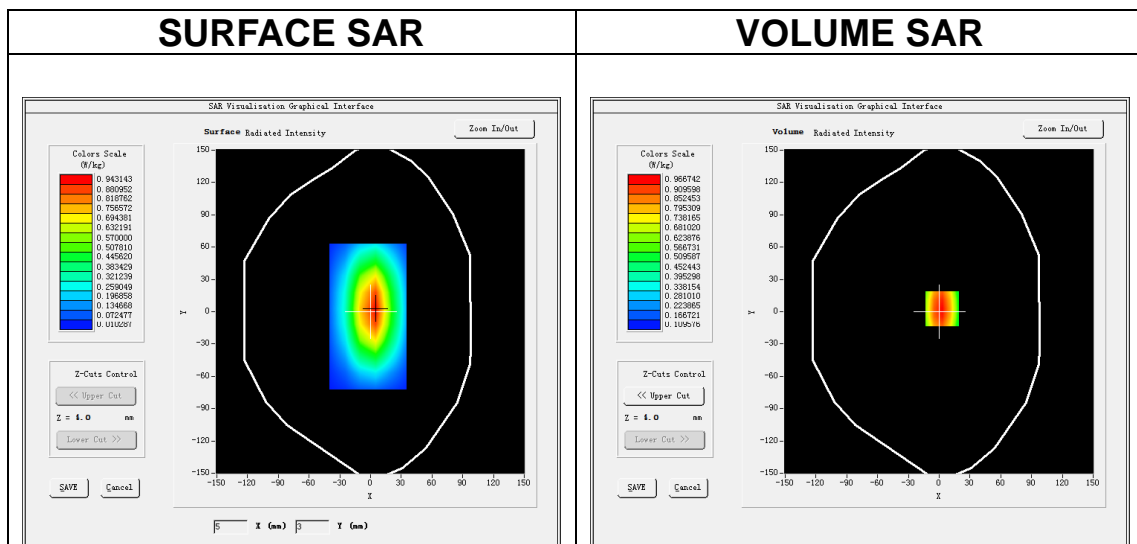
MEASUREMENT 2

A. Experimental conditions.

Area Scan	<u>dx=15mm dy=15mm, h= 5.00 mm</u>
ZoomScan	<u>5x5x7,dx=8mm dy=8mm dz=5mm</u>
Phantom	<u>Validation plane</u>
Device Position	<u>Dipole</u>
Band	<u>CW750</u>
Channels	<u>Middle</u>
Signal	<u>CW (Crest factor: 1.0)</u>

B. SAR Measurement Results

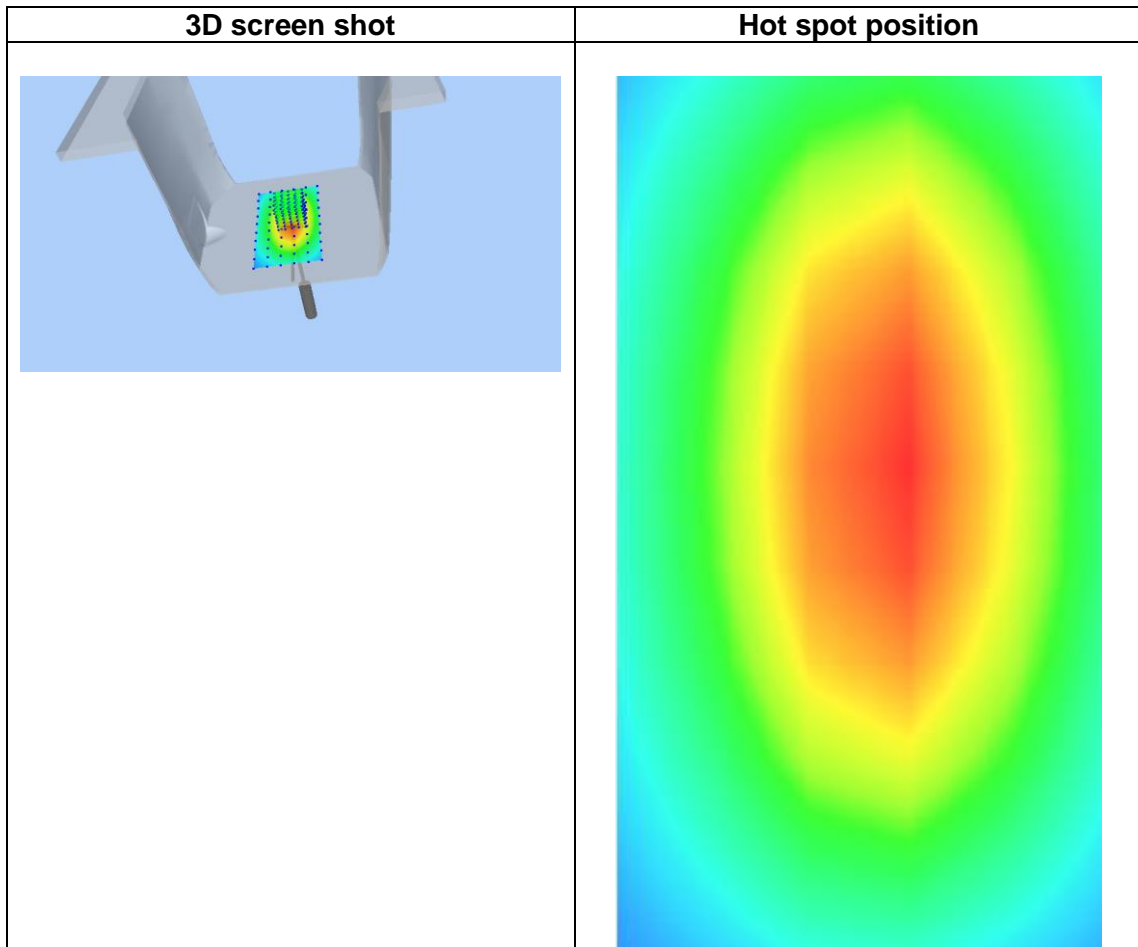
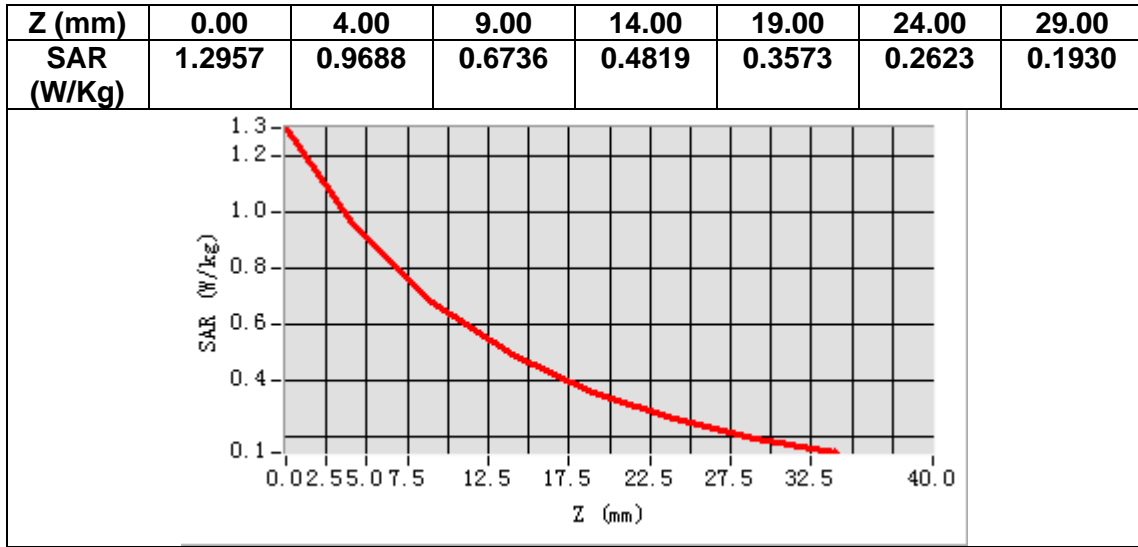
Frequency (MHz)	750.000000
Relative permittivity (real part)	55.300248
Relative permittivity (imaginary part)	23.313842
Conductivity (S/m)	0.970318
Variation (%)	-1.490000



Maximum location: X=3.00, Y=3.00

SAR Peak: 1.30 W/kg

SAR 10g (W/Kg)	0.589281
SAR 1g (W/Kg)	0.886263



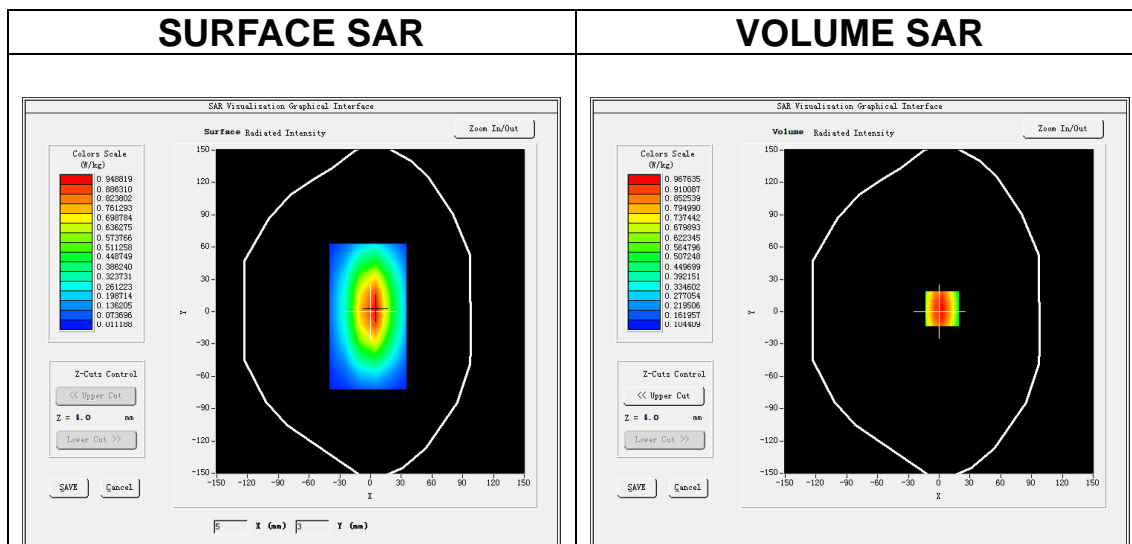
MEASUREMENT 3

A. Experimental conditions.

Area Scan	<u>dx=15mm dy=15mm, h= 5.00 mm</u>
ZoomScan	<u>5x5x7,dx=8mm dy=8mm dz=5mm</u>
Phantom	<u>Validation plane</u>
Device Position	<u>Dipole</u>
Band	<u>CW835</u>
Channels	<u>Middle</u>
Signal	<u>CW (Crest factor: 1.0)</u>

B. SAR Measurement Results

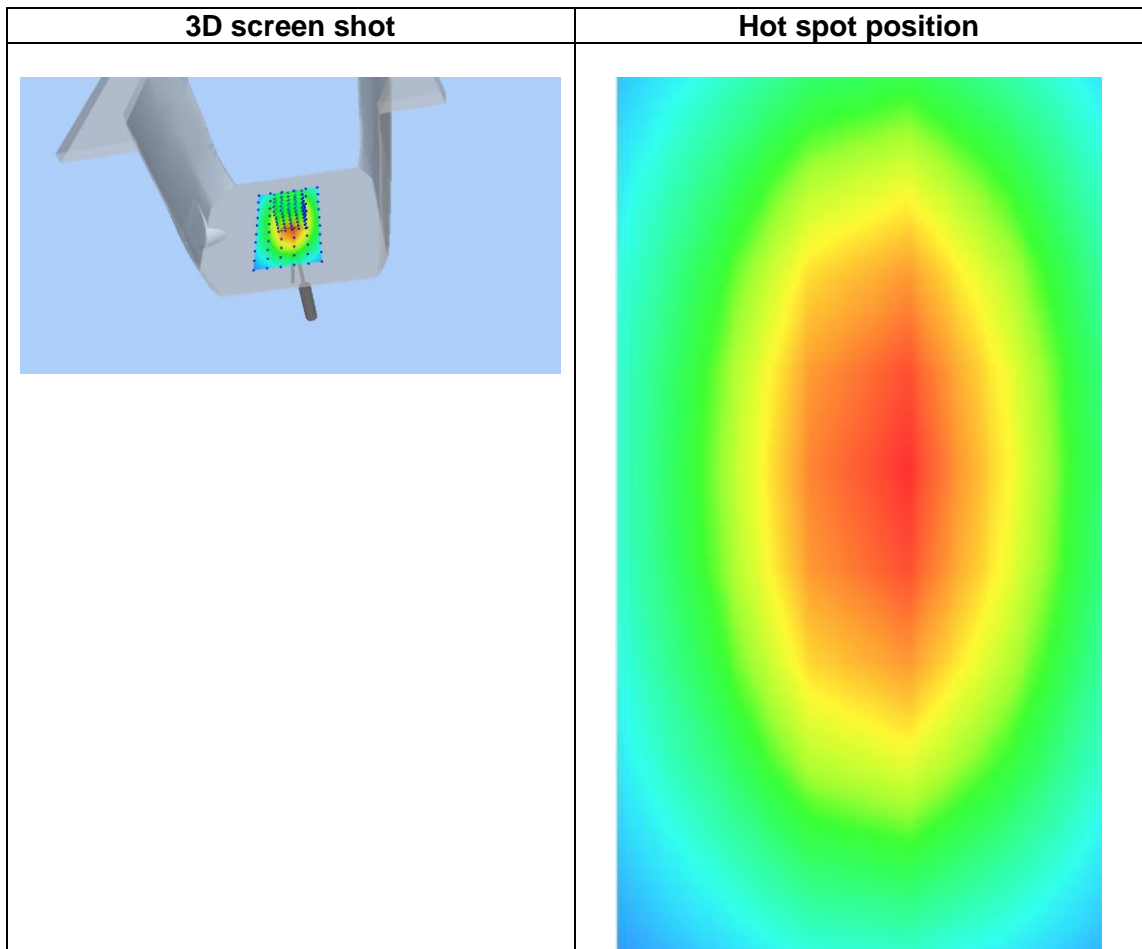
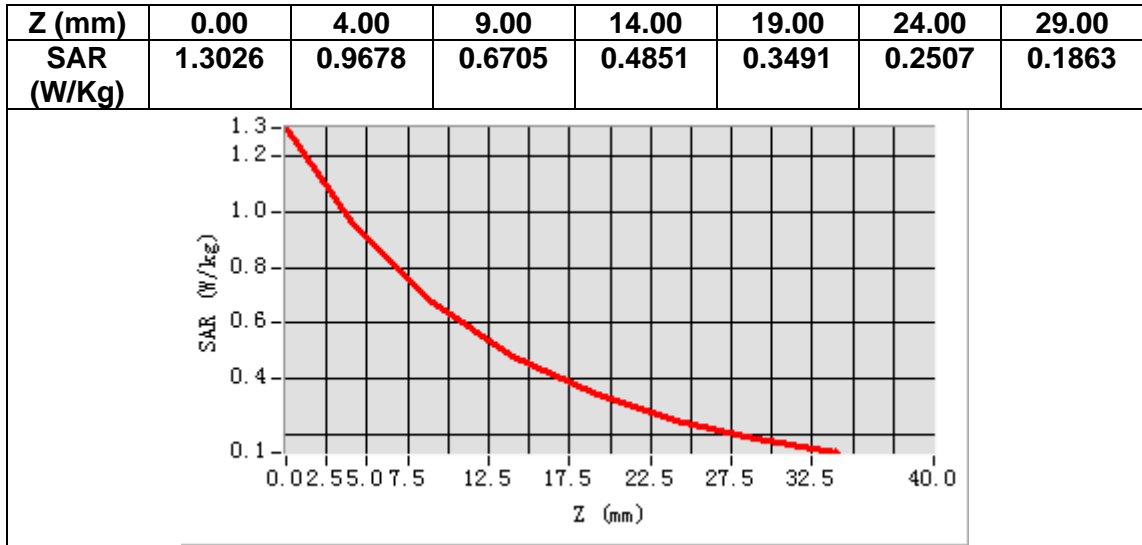
Frequency (MHz)	835.000000
Relative permittivity (real part)	40.533541
Relative permittivity (imaginary part)	20.159613
Conductivity (S/m)	0.940542
Variation (%)	1.870000



Maximum location: X=3.00, Y=3.00

SAR Peak: 1.30 W/kg

SAR 10g (W/Kg)	0.602466
SAR 1g (W/Kg)	0.945035



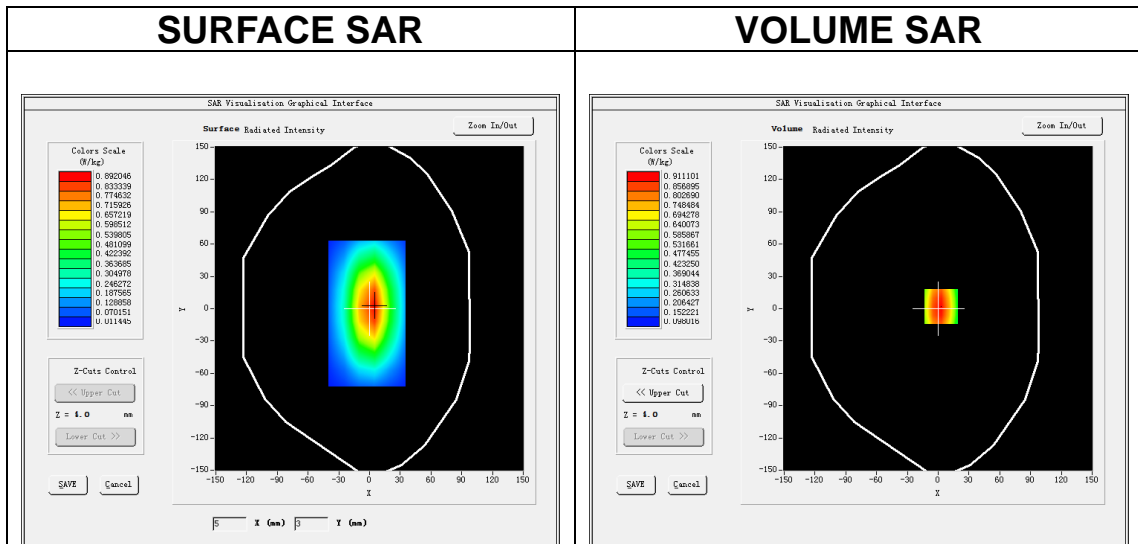
MEASUREMENT 4

A. Experimental conditions.

Area Scan	<u>dx=15mm dy=15mm, h= 5.00 mm</u>
ZoomScan	<u>5x5x7,dx=8mm dy=8mm dz=5mm</u>
Phantom	<u>Validation plane</u>
Device Position	<u>Dipole</u>
Band	<u>CW835</u>
Channels	<u>Middle</u>
Signal	<u>CW (Crest factor: 1.0)</u>

B. SAR Measurement Results

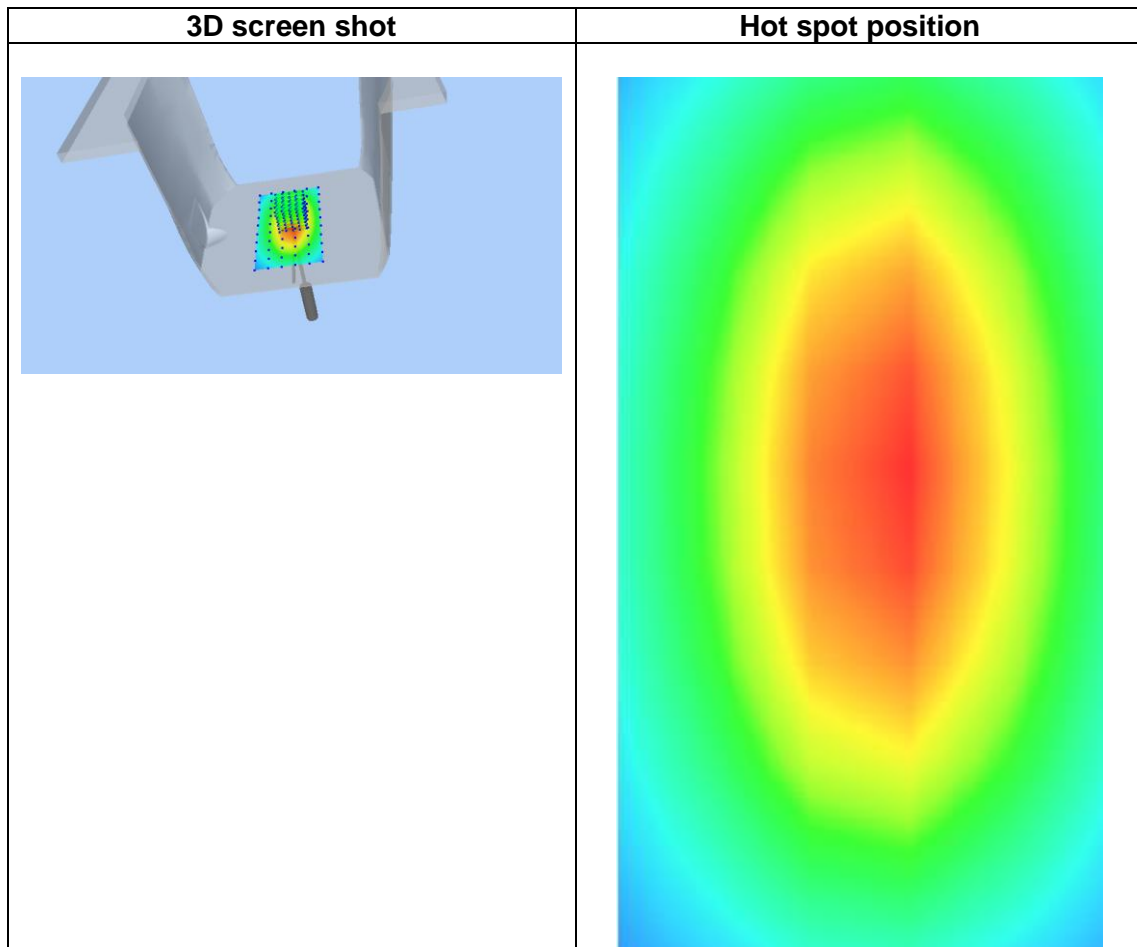
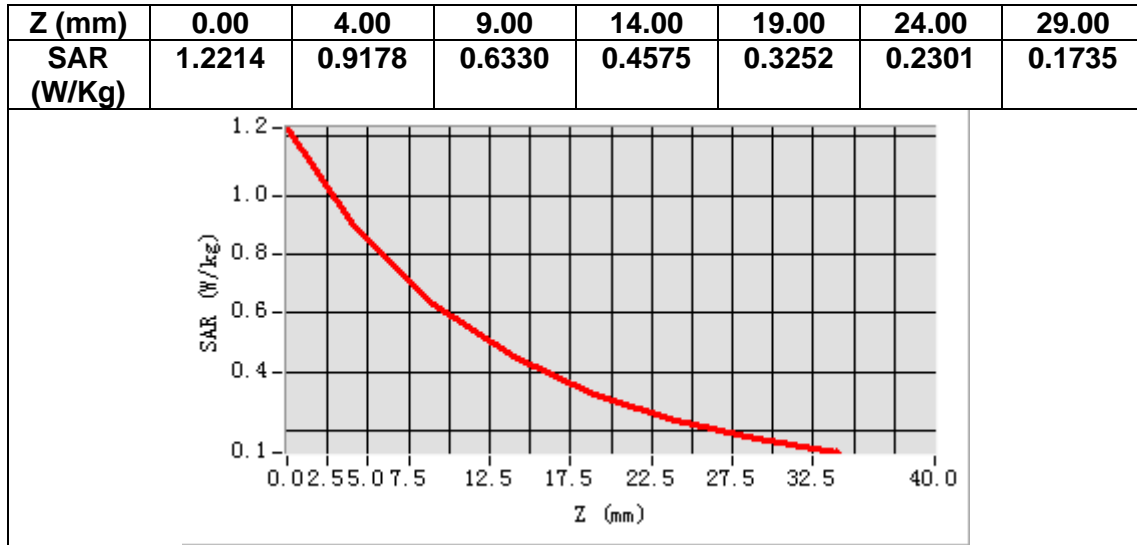
Frequency (MHz)	835.000000
Relative permittivity (real part)	54.371111
Relative permittivity (imaginary part)	21.743359
Conductivity (S/m)	1.011236
Variation (%)	-1.200000



Maximum location: X=3.00, Y=2.00

SAR Peak: 1.23 W/kg

SAR 10g (W/Kg)	0.660123
SAR 1g (W/Kg)	0.970356



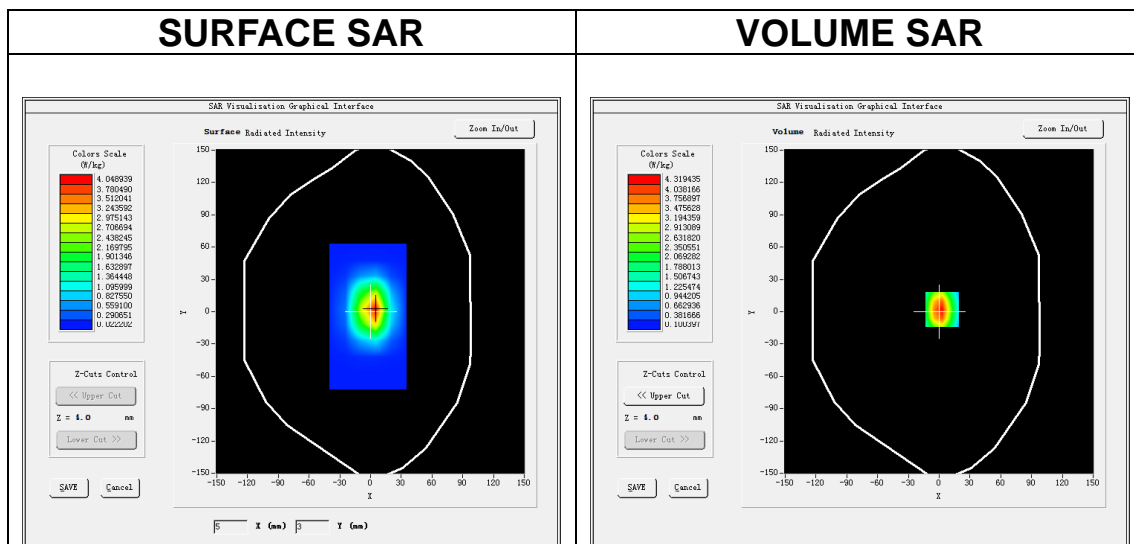
MEASUREMENT 5

A. Experimental conditions.

Area Scan	<u>dx=15mm dy=15mm, h= 5.00 mm</u>
ZoomScan	<u>5x5x7,dx=8mm dy=8mm dz=5mm</u>
Phantom	<u>Validation plane</u>
Device Position	<u>Dipole</u>
Band	<u>CW1800</u>
Channels	<u>Middle</u>
Signal	<u>CW (Crest factor: 1.0)</u>

B. SAR Measurement Results

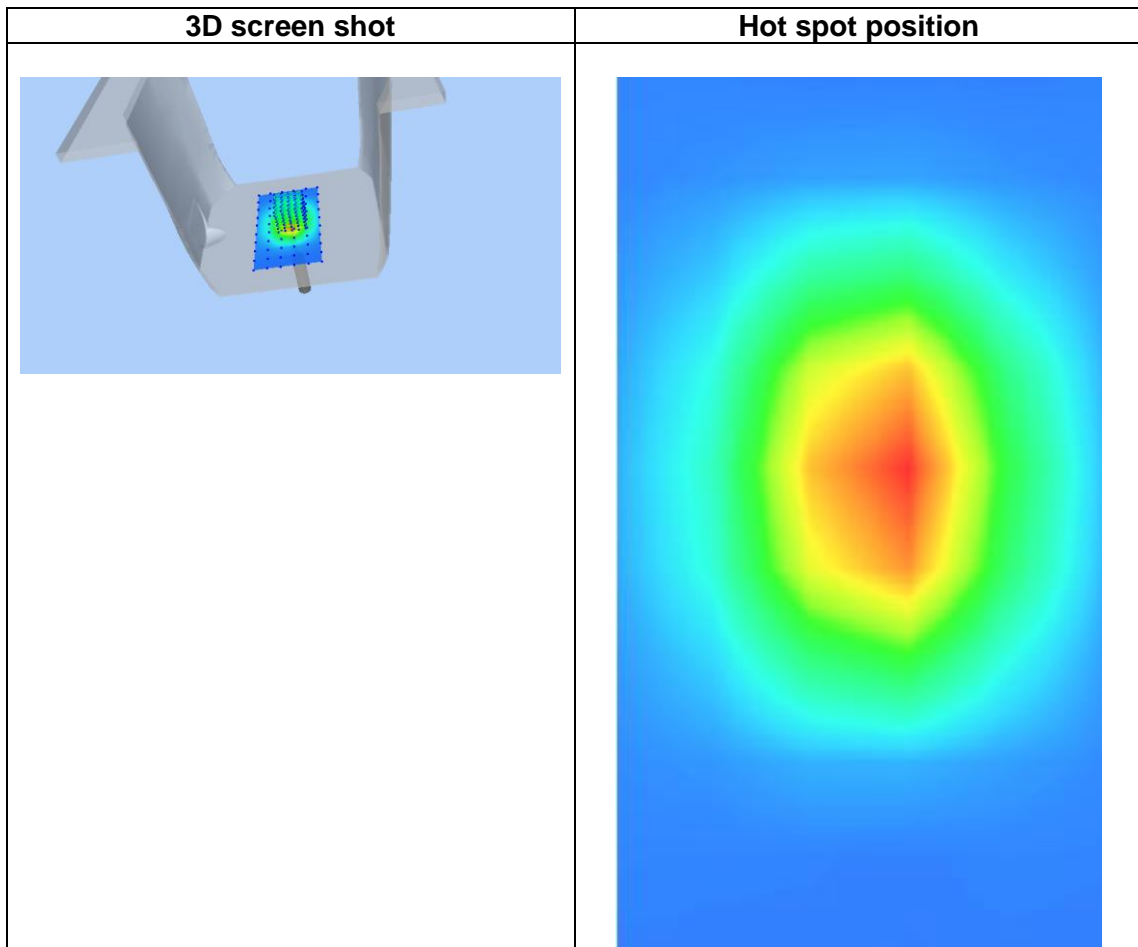
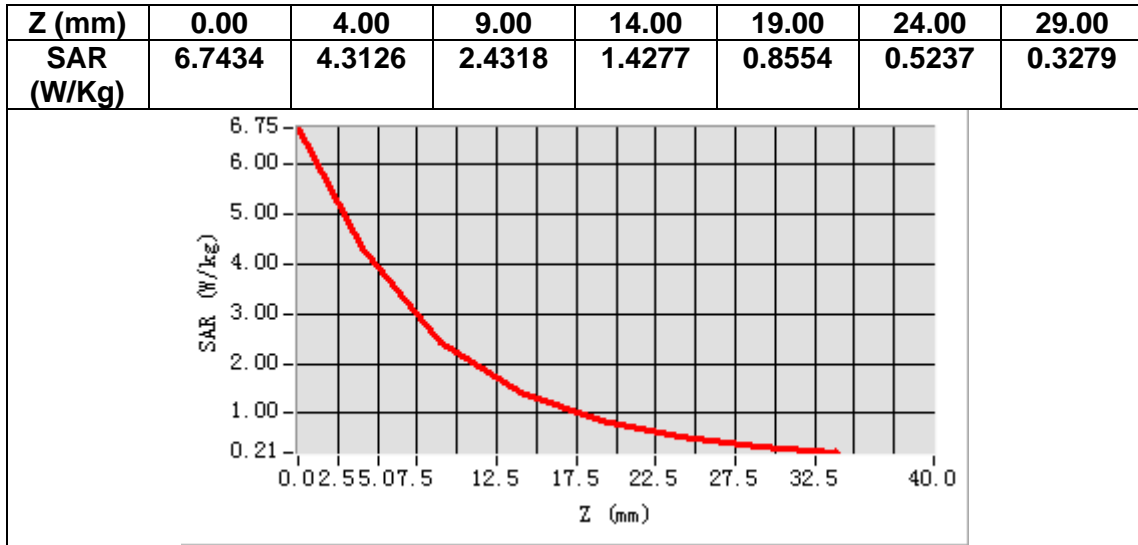
Frequency (MHz)	1800.000000
Relative permittivity (real part)	38.481237
Relative permittivity (imaginary part)	14.143229
Conductivity (S/m)	1.409367
Variation (%)	-2.110000



Maximum location: X=3.00, Y=2.00

SAR Peak: 6.82 W/kg

SAR 10g (W/Kg)	2.010397
SAR 1g (W/Kg)	3.806451



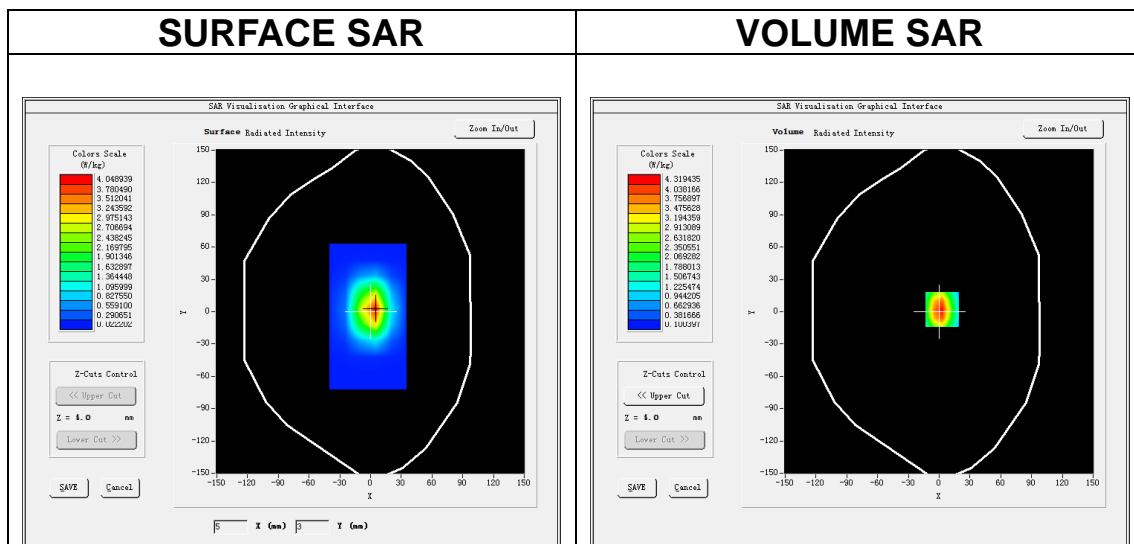
MEASUREMENT 6

A. Experimental conditions.

Area Scan	<u>dx=15mm dy=15mm, h= 5.00 mm</u>
ZoomScan	<u>5x5x7,dx=8mm dy=8mm dz=5mm</u>
Phantom	<u>Validation plane</u>
Device Position	<u>Dipole</u>
Band	<u>CW1800</u>
Channels	<u>Middle</u>
Signal	<u>CW (Crest factor: 1.0)</u>

B. SAR Measurement Results

Frequency (MHz)	1800.000000
Relative permittivity (real part)	53.243510
Relative permittivity (imaginary part)	15.634016
Conductivity (S/m)	1.563096
Variation (%)	2.020000

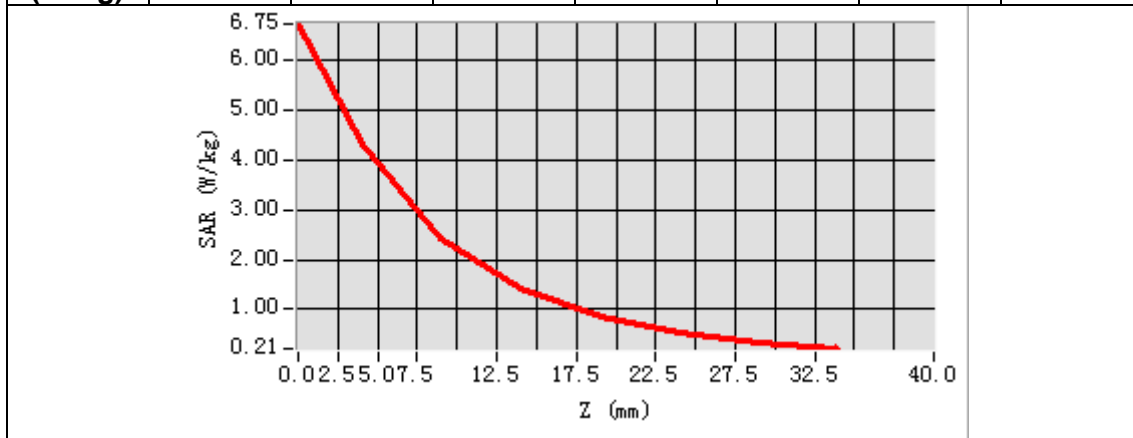


Maximum location: X=3.00, Y=2.00

SAR Peak: 6.82 W/kg

SAR 10g (W/Kg)	2.063379
SAR 1g (W/Kg)	3.812268

Z (mm)	0.00	4.00	9.00	14.00	19.00	24.00	29.00
SAR (W/Kg)	6.7434	4.3133	2.4332	1.4247	0.8577	0.5244	0.3266



3D screen shot	Hot spot position

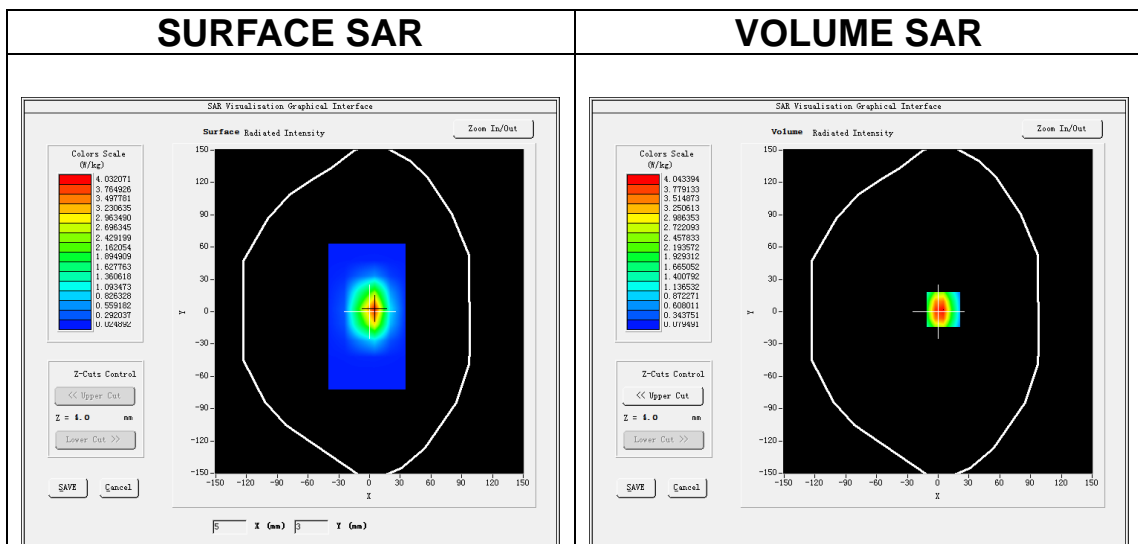
MEASUREMENT 7

A. Experimental conditions.

Area Scan	<u>dx=15mm dy=15mm, h= 5.00 mm</u>
ZoomScan	<u>5x5x7,dx=8mm dy=8mm dz=5mm</u>
Phantom	<u>Validation plane</u>
Device Position	<u>Dipole</u>
Band	<u>CW1900</u>
Channels	<u>Middle</u>
Signal	<u>CW (Crest factor: 1.0)</u>

B. SAR Measurement Results

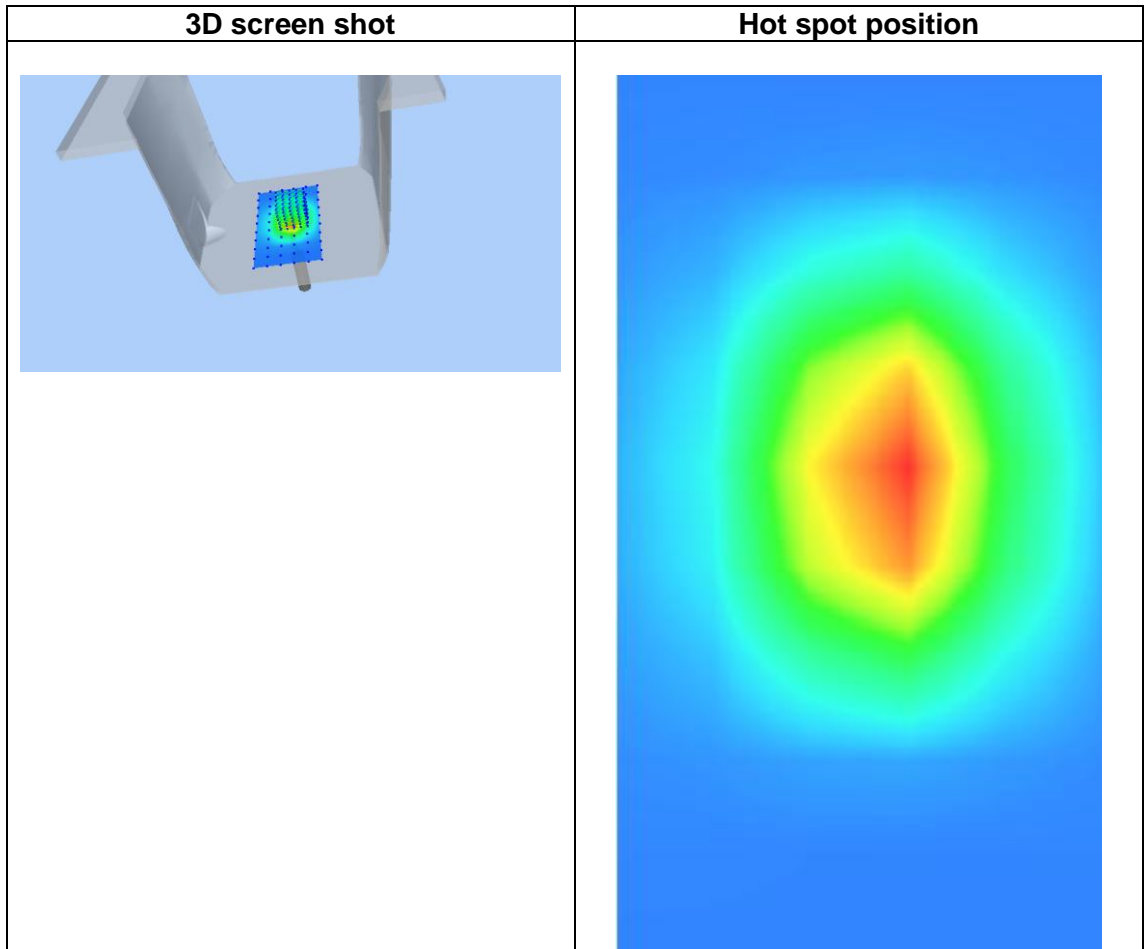
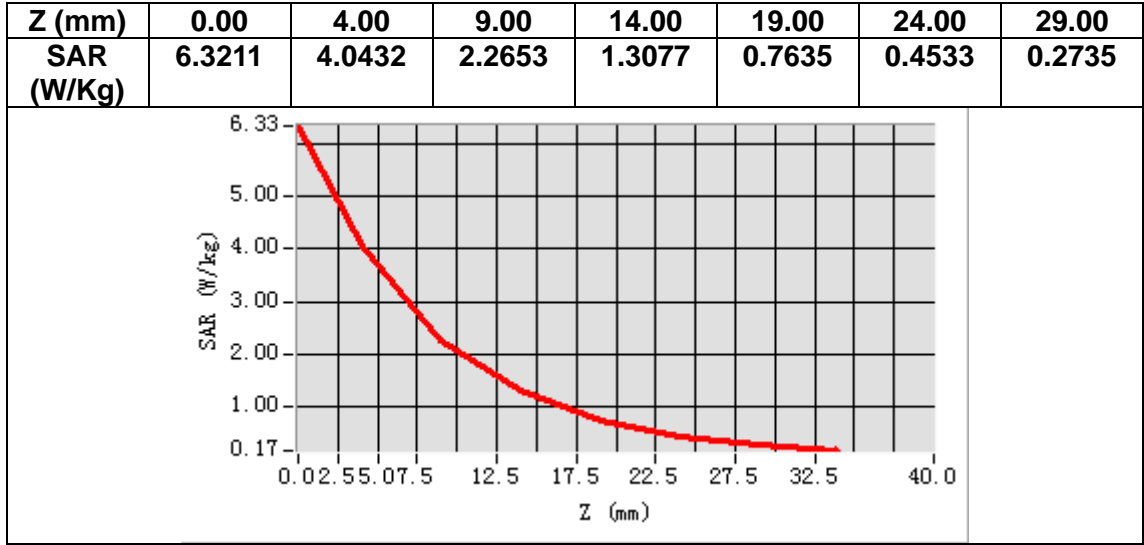
Frequency (MHz)	1900.000000
Relative permittivity (real part)	40.961287
Relative permittivity (imaginary part)	13.843008
Conductivity (S/m)	1.460336
Variation (%)	-1.430000



Maximum location: X=5.00, Y=2.00

SAR Peak: 6.70 W/kg

SAR 10g (W/Kg)	2.007456
SAR 1g (W/Kg)	3.890365



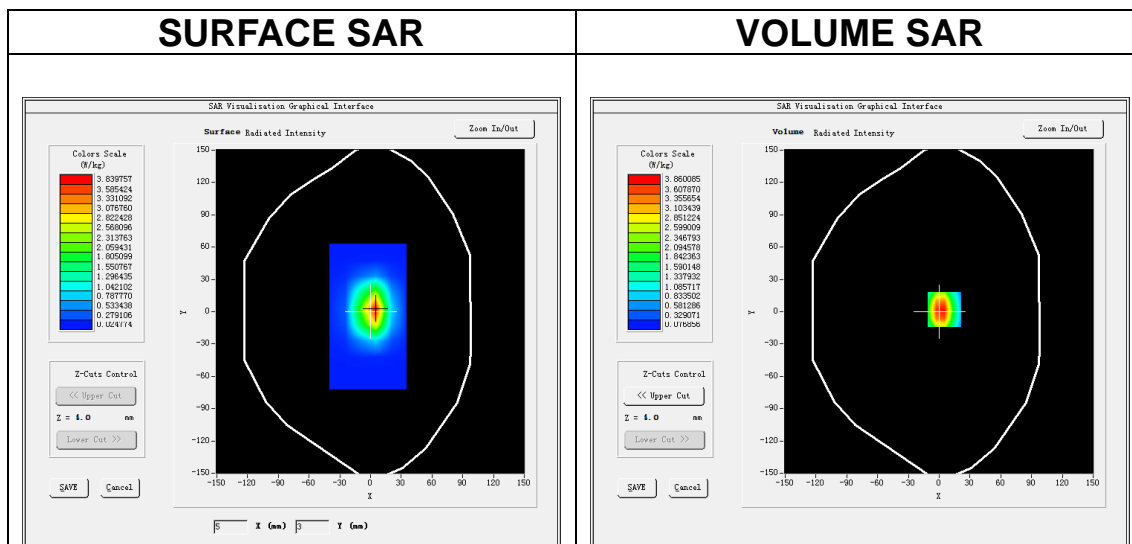
MEASUREMENT 8

A. Experimental conditions.

Area Scan	<u>dx=15mm dy=15mm, h= 5.00 mm</u>
ZoomScan	<u>5x5x7,dx=8mm dy=8mm dz=5mm</u>
Phantom	<u>Validation plane</u>
Device Position	<u>Dipole</u>
Band	<u>CW1900</u>
Channels	<u>Middle</u>
Signal	<u>CW (Crest factor: 1.0)</u>

B. SAR Measurement Results

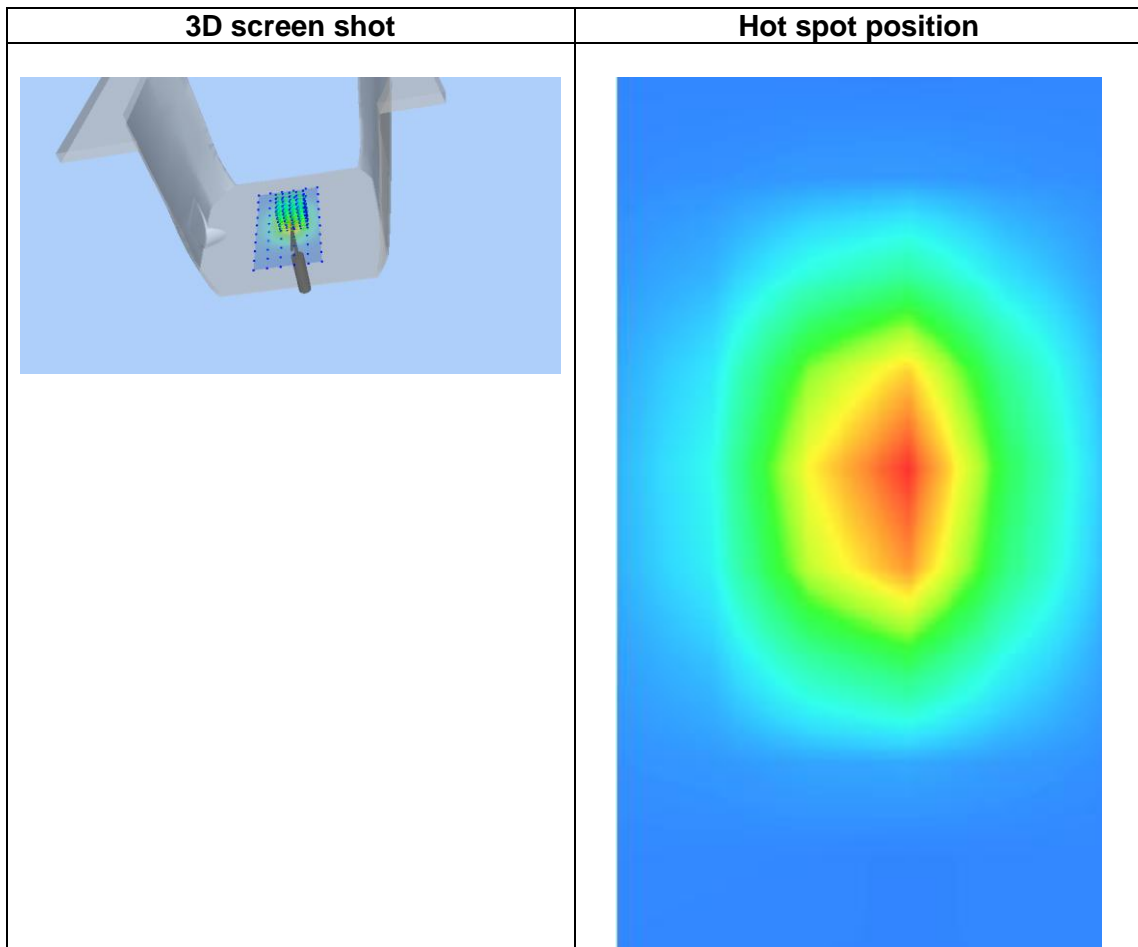
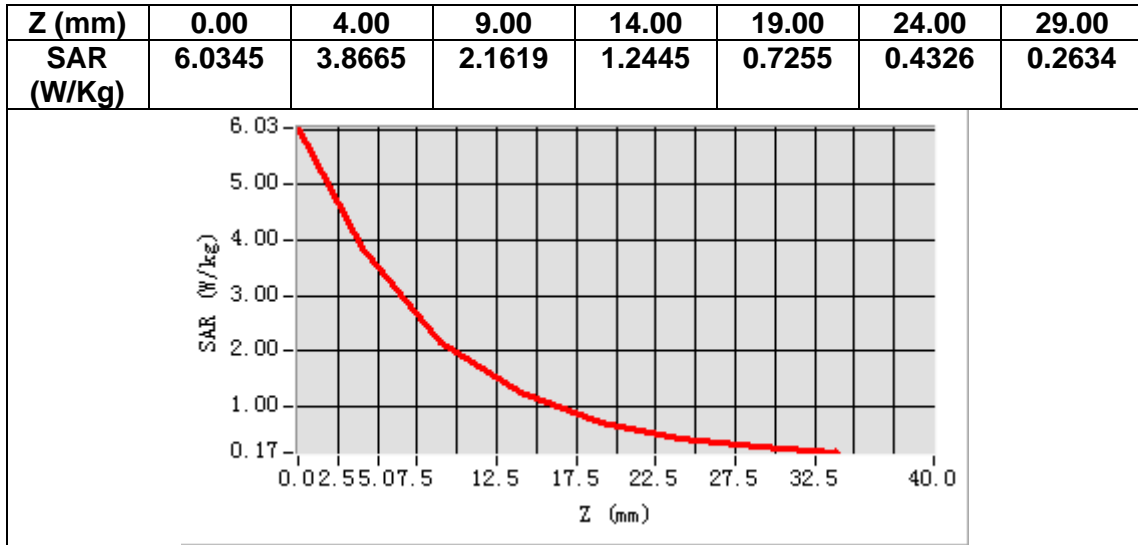
Frequency (MHz)	1900.000000
Relative permittivity (real part)	52.573335
Relative permittivity (imaginary part)	14.903503
Conductivity (S/m)	1.569566
Variation (%)	3.460000



Maximum location: X=5.00, Y=2.00

SAR Peak: 6.39 W/kg

SAR 10g (W/Kg)	2.059329
SAR 1g (W/Kg)	3.910402



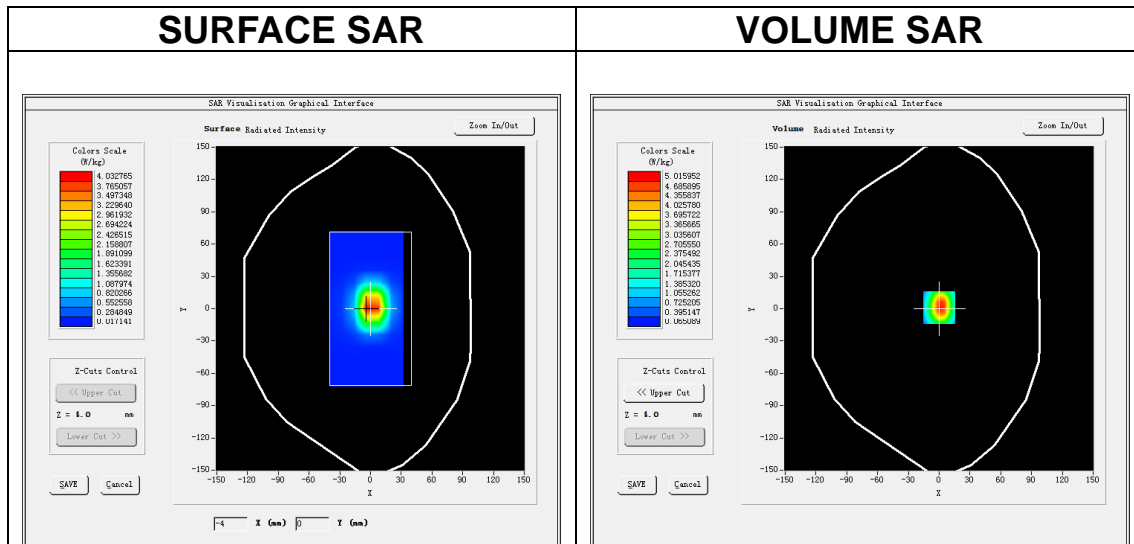
MEASUREMENT 9

A. Experimental conditions.

Area Scan	<u>dx=12mm dy=12mm, h= 5.00 mm</u>
ZoomScan	<u>7x7x7,dx=5mm dy=5mm dz=5mm</u>
Phantom	<u>Validation plane</u>
Device Position	<u>Dipole</u>
Band	<u>CW2450</u>
Channels	<u>Middle</u>
Signal	<u>CW (Crest factor: 1.0)</u>

B. SAR Measurement Results

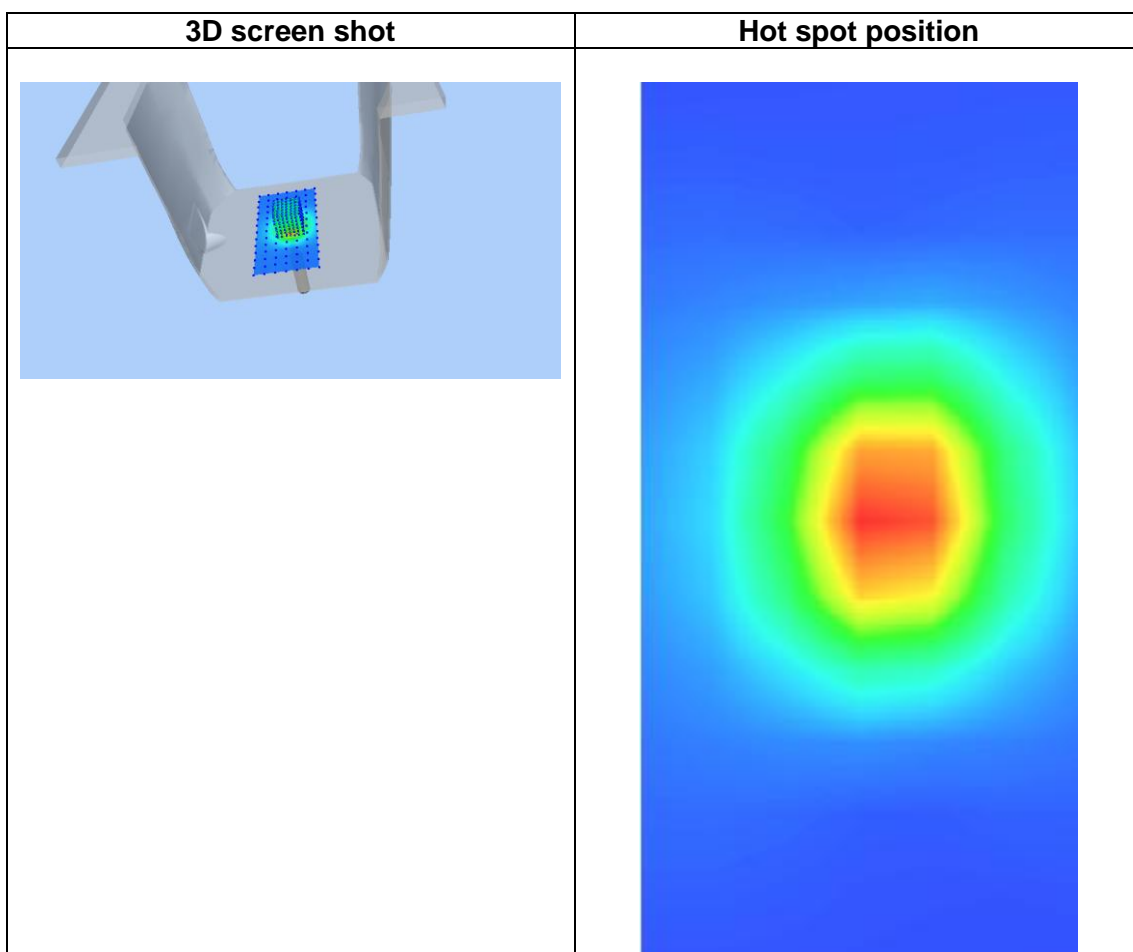
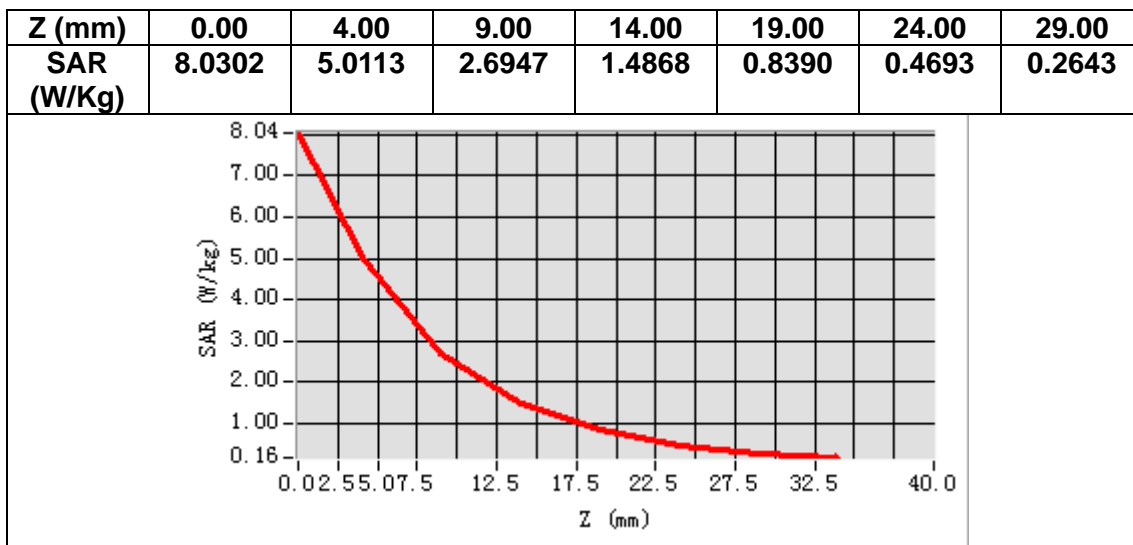
Frequency (MHz)	2450.000000
Relative permittivity (real part)	38.721421
Relative permittivity (imaginary part)	13.792631
Conductivity (S/m)	1.879663
Variation (%)	-3.350000



Maximum location: X=0.00, Y=1.00

SAR Peak: 8.14 W/kg

SAR 10g (W/Kg)	2.416375
SAR 1g (W/Kg)	5.369435



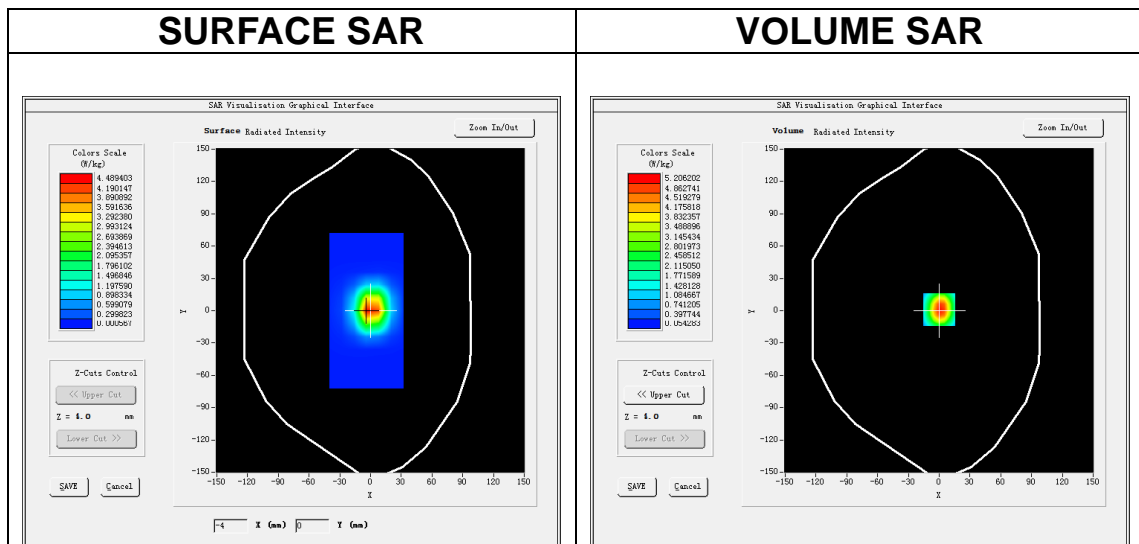
MEASUREMENT 10

A. Experimental conditions.

Area Scan	<u>dx=12mm dy=12mm, h= 5.00 mm</u>
ZoomScan	<u>7x7x7, dx=5mm dy=5mm dz=5mm</u>
Phantom	<u>Validation plane</u>
Device Position	<u>Dipole</u>
Band	<u>CW2450</u>
Channels	<u>Middle</u>
Signal	<u>CW (Crest factor: 1.0)</u>

B. SAR Measurement Results

Frequency (MHz)	2450.000000
Relative permittivity (real part)	52.091497
Relative permittivity (imaginary part)	14.883566
Conductivity (S/m)	2.032816
Variation (%)	1.420000

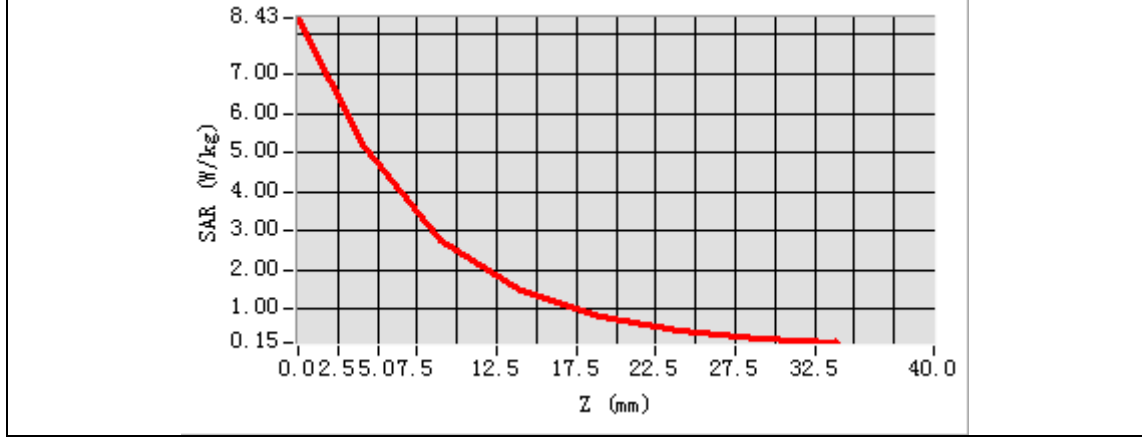


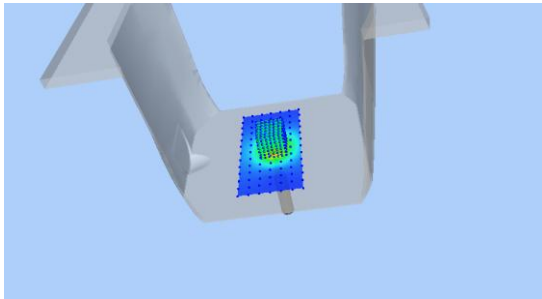
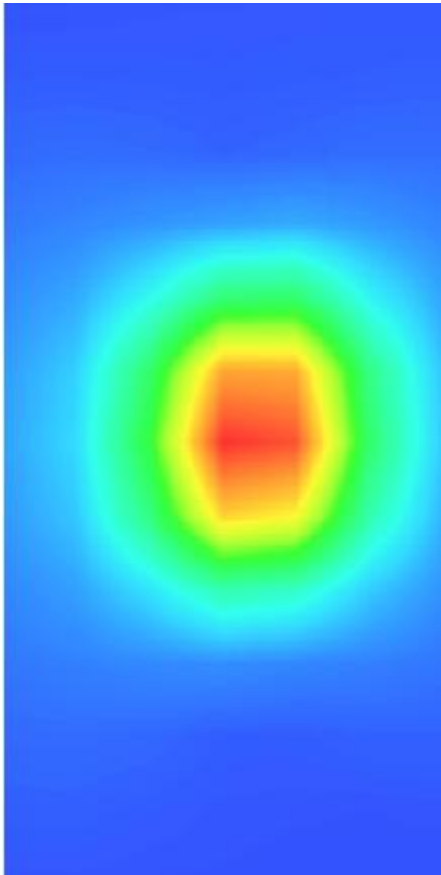
Maximum location: X=0.00, Y=1.00

SAR Peak: 8.46 W/kg

SAR 10g (W/Kg)	2.401285
SAR 1g (W/Kg)	5.288270

Z (mm)	0.00	4.00	9.00	14.00	19.00	24.00	29.00
SAR (W/Kg)	8.4312	5.2217	2.7528	1.4235	0.8268	0.4398	0.2567



3D screen shot	Hot spot position
	

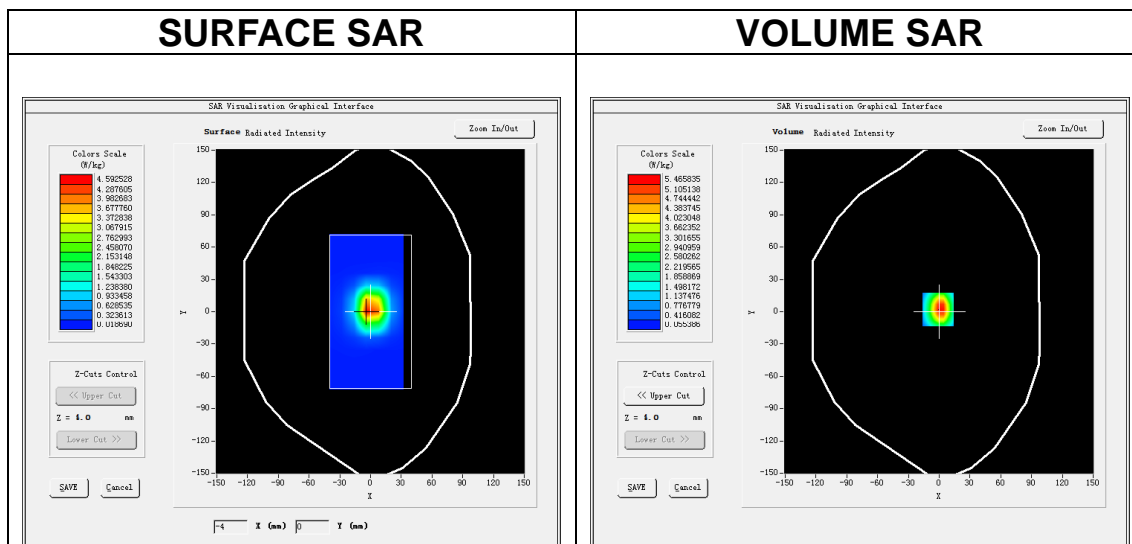
MEASUREMENT 11

A. Experimental conditions.

Area Scan	<u>dx=12mm dy=12mm, h= 5.00 mm</u>
ZoomScan	<u>7x7x7,dx=5mm dy=5mm dz=5mm</u>
Phantom	<u>Validation plane</u>
Device Position	<u>Dipole</u>
Band	<u>CW2600</u>
Channels	<u>Middle</u>
Signal	<u>CW (Crest factor: 1.0)</u>

B. SAR Measurement Results

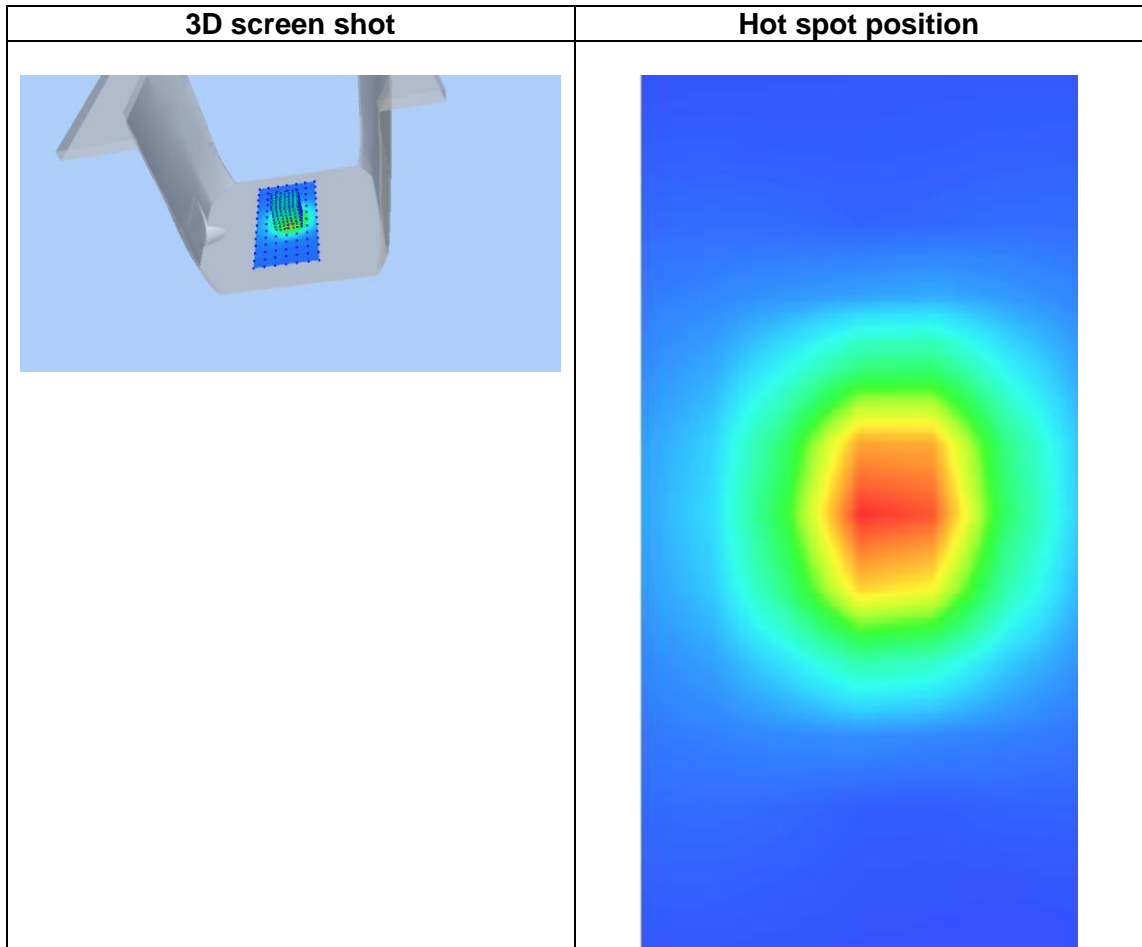
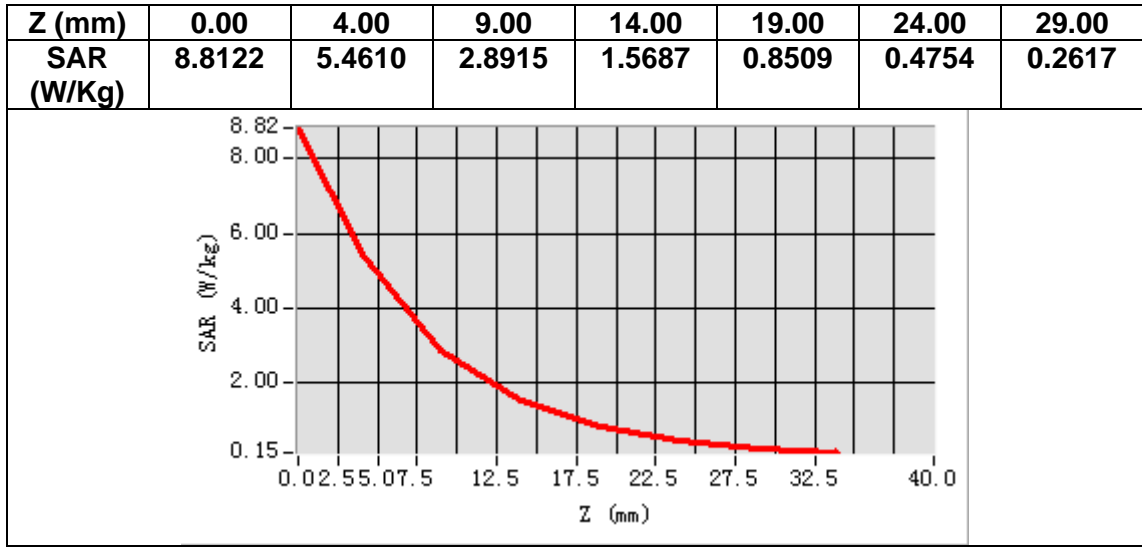
Frequency (MHz)	2600.000000
Relative permittivity (real part)	38.402638
Relative permittivity (imaginary part)	14.023997
Conductivity (S/m)	2.033631
Variation (%)	-0.040000



Maximum location: X=-1.00, Y=2.00

SAR Peak: 9.07 W/kg

SAR 10g (W/Kg)	2.419205
SAR 1g (W/Kg)	5.550267



MEASUREMENT 12

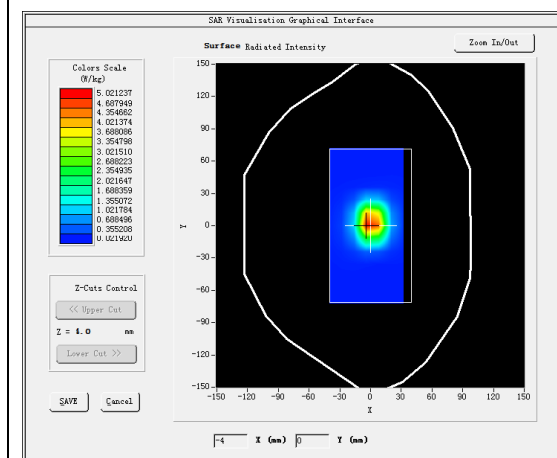
A. Experimental conditions.

Area Scan	<u>dx=12mm dy=12mm, h= 5.00 mm</u>
ZoomScan	<u>7x7x7,dx=5mm dy=5mm dz=5mm</u>
Phantom	<u>Validation plane</u>
Device Position	<u>Dipole</u>
Band	<u>CW2600</u>
Channels	<u>Middle</u>
Signal	<u>CW (Crest factor: 1.0)</u>

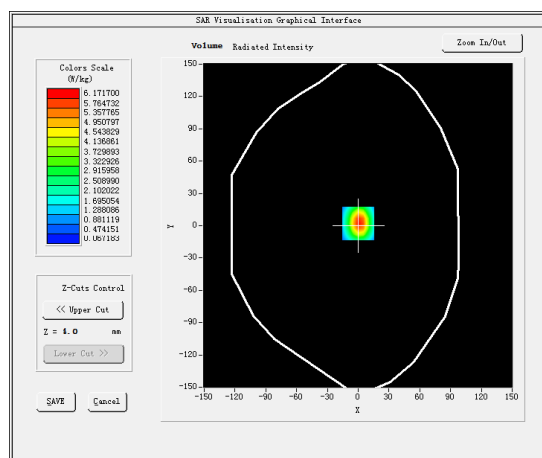
B. SAR Measurement Results

Frequency (MHz)	2600.000000
Relative permittivity (real part)	52.672866
Relative permittivity (imaginary part)	15.230101
Conductivity (S/m)	2.203465
Variation (%)	-1.220000

SURFACE SAR



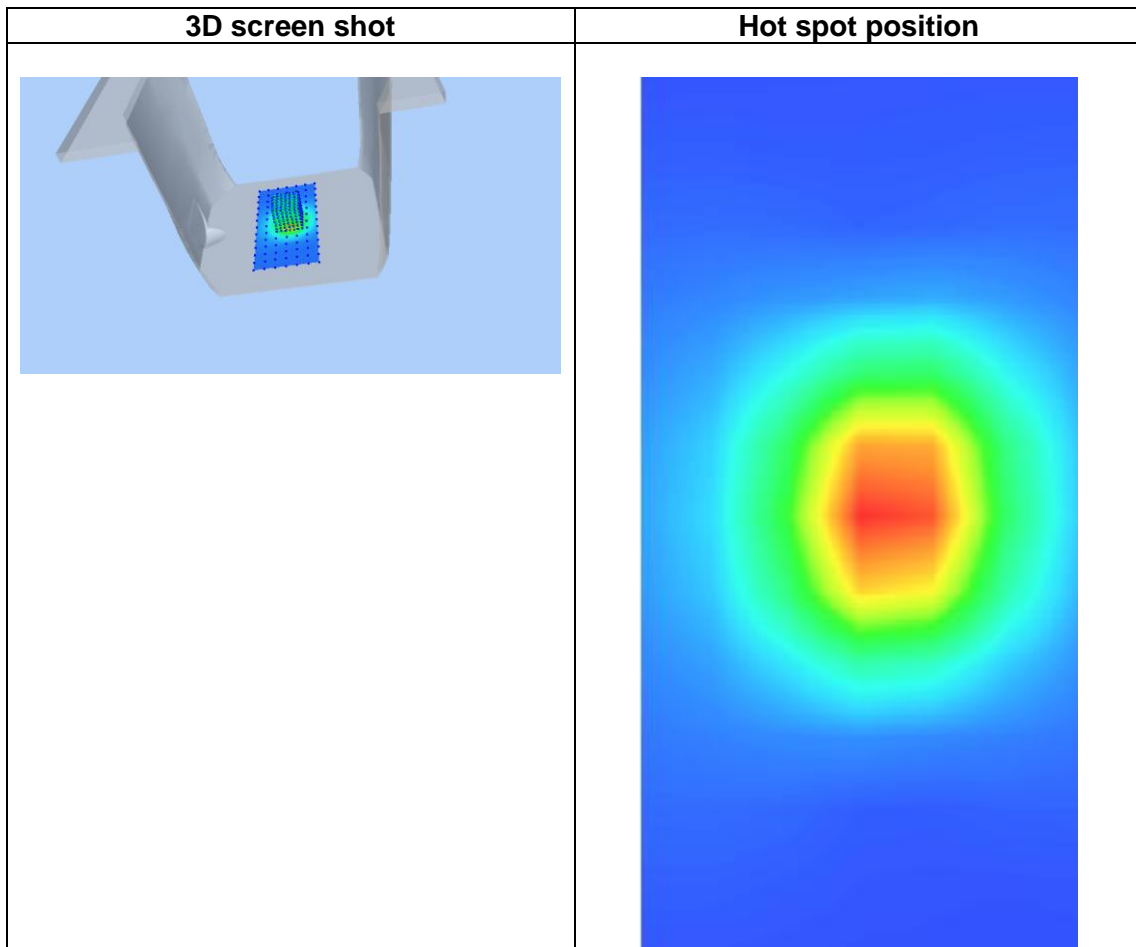
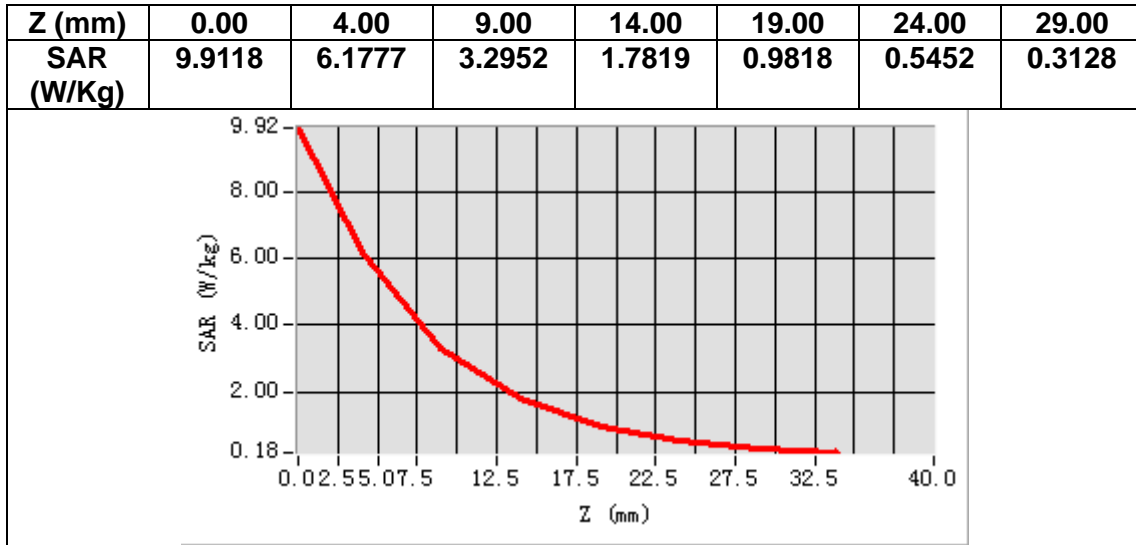
VOLUME SAR



Maximum location: X=0.00, Y=2.00

SAR Peak: 9.99 W/kg

SAR 10g (W/Kg)	2.463324
SAR 1g (W/Kg)	5.565188



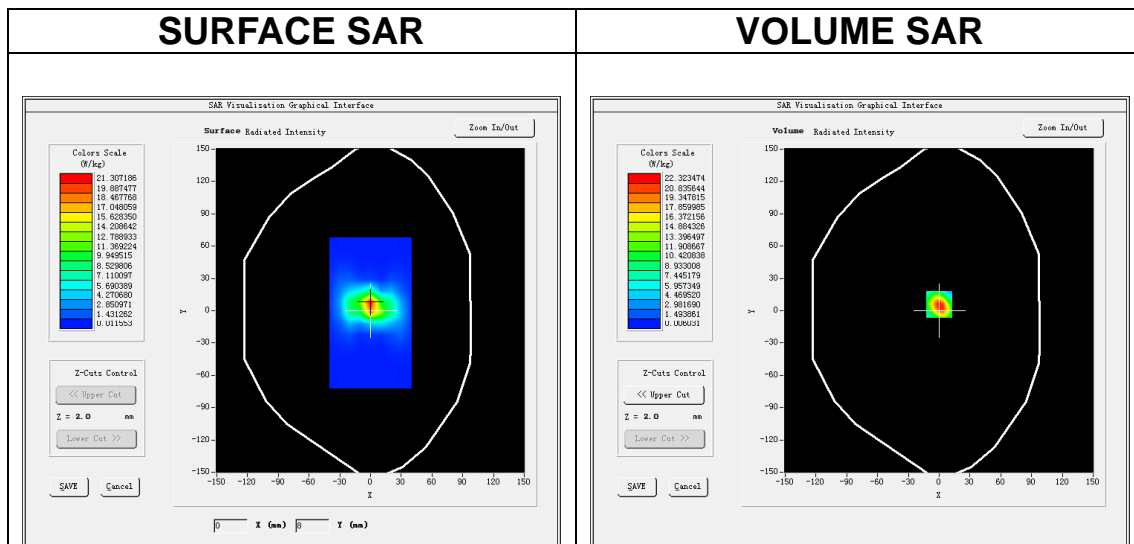
MEASUREMENT 13

A. Experimental conditions.

Area Scan	<u>dx=10mm dy=10mm, h= 2.00 mm</u>
ZoomScan	<u>7x7x12,dx=4mm dy=4mm dz=2mm</u>
Phantom	<u>Validation plane</u>
Device Position	<u>Dipole</u>
Band	<u>CW5200</u>
Channels	<u>Middle</u>
Signal	<u>CW (Crest factor: 1.0)</u>

B. SAR Measurement Results

Frequency (MHz)	5200.000000
Relative permittivity (real part)	35.832204
Relative permittivity (imaginary part)	16.043542
Conductivity (S/m)	4.632321
Variation (%)	1.660000

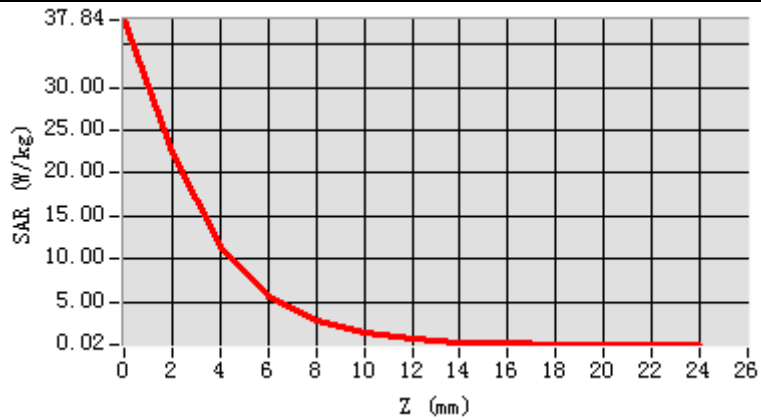


Maximum location: X=0.00, Y=6.00

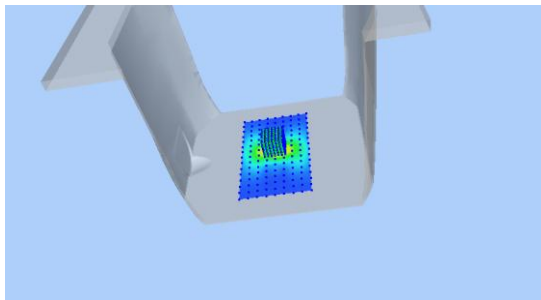
SAR Peak: 40.06 W/kg

SAR 10g (W/Kg)	5.584495
SAR 1g (W/Kg)	16.077221

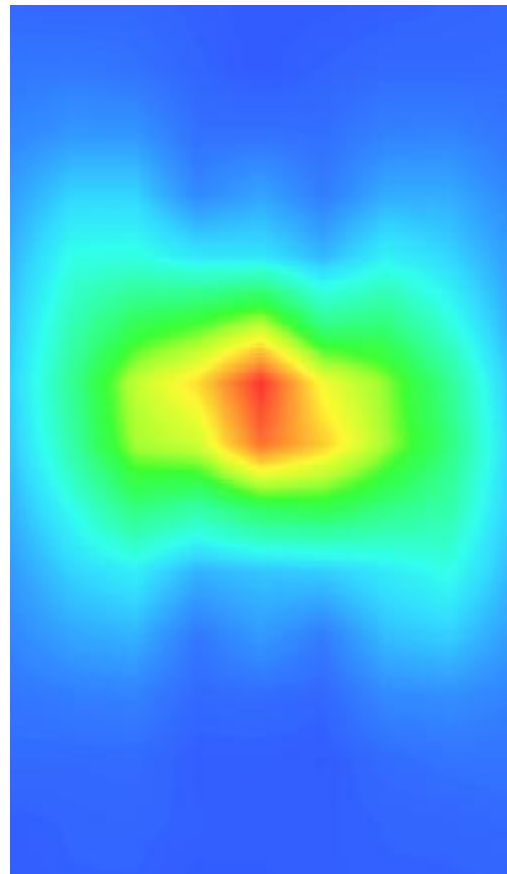
Z (m m)	0.00	2.00	4.00	6.00	8.00	10.0	12.0	14.0	16.0	18.0	20.0	22.0
SAR R (W/ Kg)	37.8 356	22.3 278	11.3 730	5.66 18	2.82 55	1.40 93	0.71 24	0.36 60	0.18 08	0.10 12	0.05 13	0.03 23



3D screen shot



Hot spot position



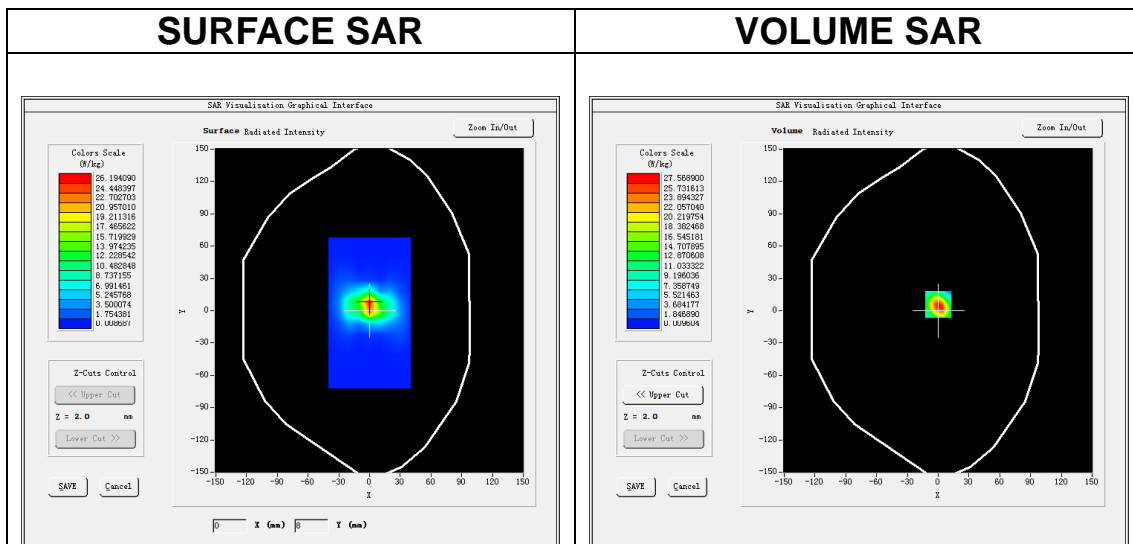
MEASUREMENT 14

A. Experimental conditions.

Area Scan	<u>dx=10mm dy=10mm, h= 2.00 mm</u>
ZoomScan	<u>7x7x12,dx=4mm dy=4mm dz=2mm</u>
Phantom	<u>Validation plane</u>
Device Position	<u>Dipole</u>
Band	<u>CW5200</u>
Channels	<u>Middle</u>
Signal	<u>CW (Crest factor: 1.0)</u>

B. SAR Measurement Results

Frequency (MHz)	5200.000000
Relative permittivity (real part)	49.662845
Relative permittivity (imaginary part)	18.301441
Conductivity (S/m)	5.293842
Variation (%)	4.490000

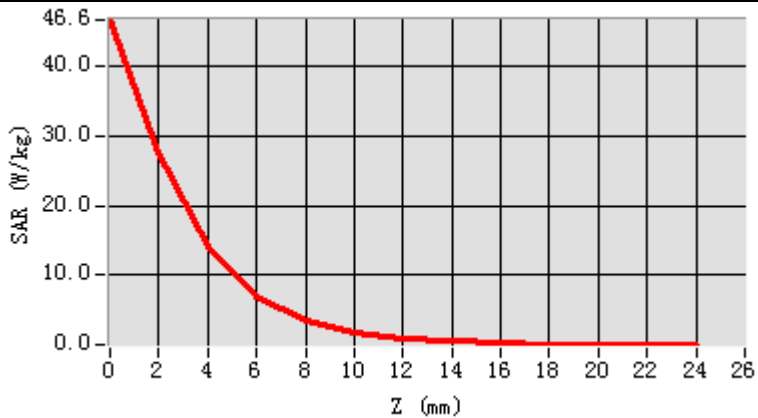


Maximum location: X=0.00, Y=6.00

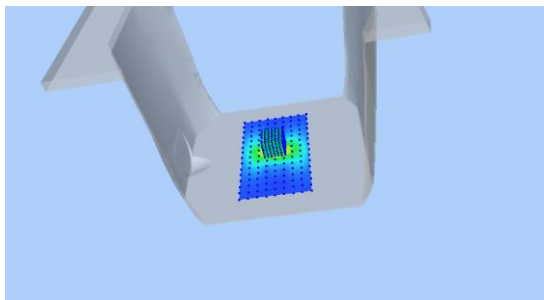
SAR Peak: 49.61 W/kg

SAR 10g (W/Kg)	5.510184
SAR 1g (W/Kg)	15.677246

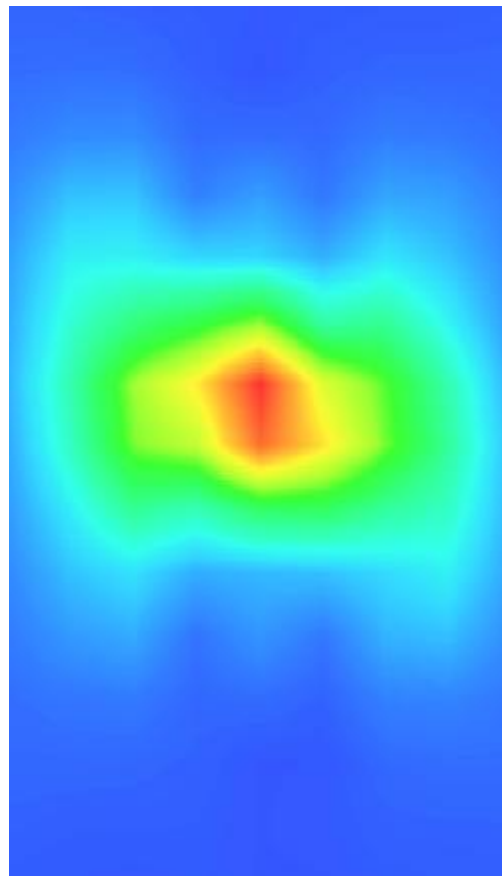
Z (m)	0.00	2.00	4.00	6.00	8.00	10.00	12.00	14.00	16.00	18.00	20.00	22.00
SAR (W/Kg)	46.6150	27.5644	14.0668	7.0591	3.5928	1.7802	0.8938	0.4670	0.2475	0.1353	0.0650	0.04000



3D screen shot



Hot spot position



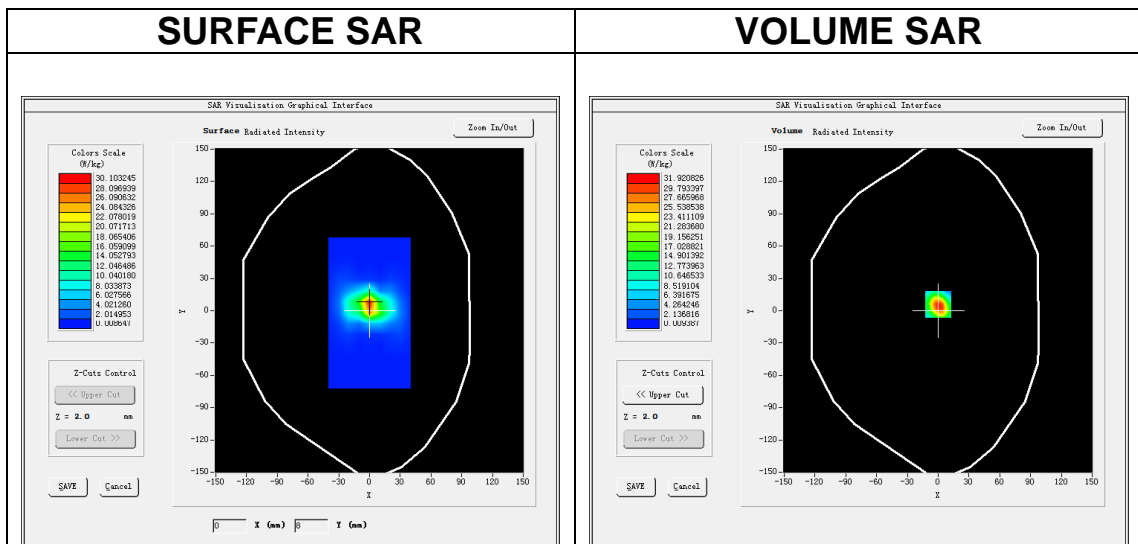
MEASUREMENT 15

A. Experimental conditions.

Area Scan	<u>dx=10mm dy=10mm, h= 2.00 mm</u>
ZoomScan	<u>7x7x12,dx=4mm dy=4mm dz=2mm</u>
Phantom	<u>Validation plane</u>
Device Position	<u>Dipole</u>
Band	<u>CW5800</u>
Channels	<u>Middle</u>
Signal	<u>CW (Crest factor: 1.0)</u>

B. SAR Measurement Results

Frequency (MHz)	5800.000000
Relative permittivity (real part)	34.741512
Relative permittivity (imaginary part)	16.083082
Conductivity (S/m)	5.180981
Variation (%)	1.880000

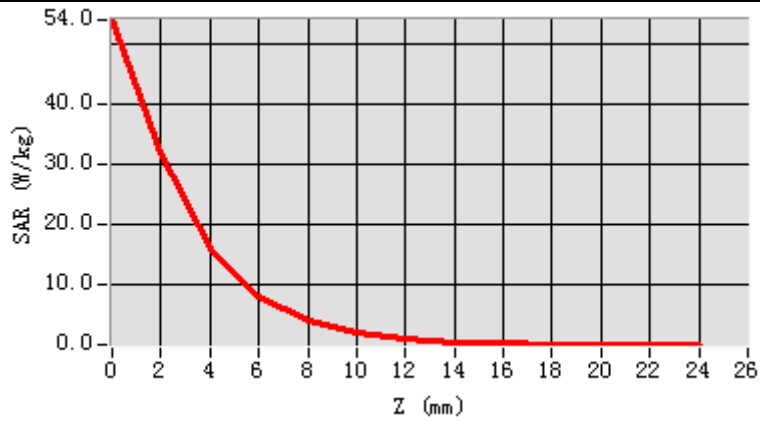


Maximum location: X=0.00, Y=6.00

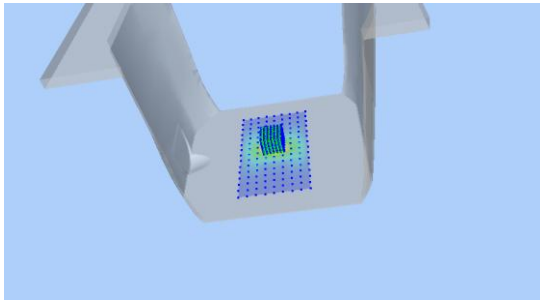
SAR Peak: 57.37 W/kg

SAR 10g (W/Kg)	6.256095
SAR 1g (W/Kg)	18.410093

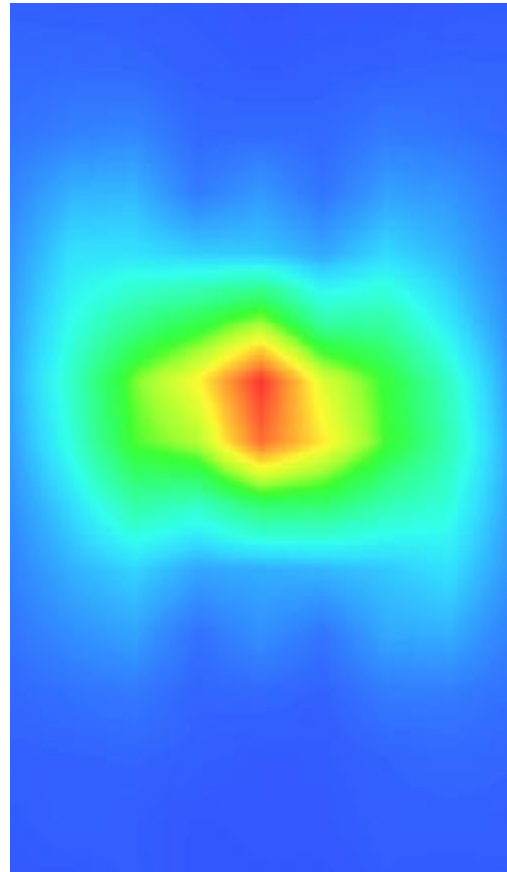
Z (m m)	0.00	2.00	4.00	6.00	8.00	10.0	12.0	14.0	16.0	18.0	20.0	22.0
SAR R (W/ Kg)	54.0 337	31.9 251	16.1 709	8.17 95	4.08 15	2.05 72	1.03 29	0.51 77	0.27 63	0.15 42	0.07 82	0.04 46



3D screen shot



Hot spot position



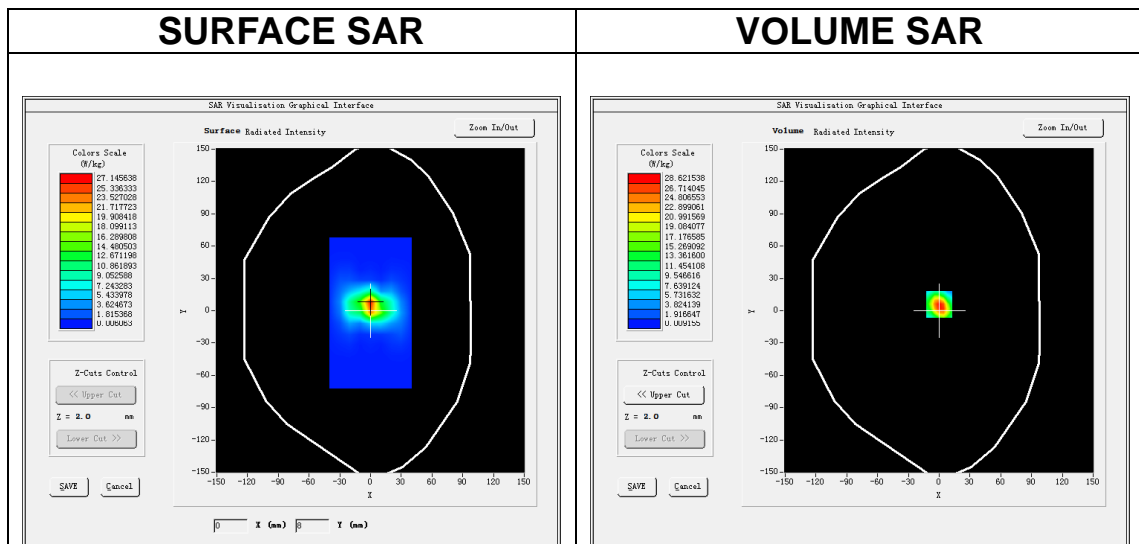
MEASUREMENT 16

A. Experimental conditions.

Area Scan	<u>dx=10mm dy=10mm, h= 2.00 mm</u>
ZoomScan	<u>7x7x12,dx=4mm dy=4mm dz=2mm</u>
Phantom	<u>Validation plane</u>
Device Position	<u>Dipole</u>
Band	<u>CW5800</u>
Channels	<u>Middle</u>
Signal	<u>CW (Crest factor: 1.0)</u>

B. SAR Measurement Results

Frequency (MHz)	5800.000000
Relative permittivity (real part)	48.350523
Relative permittivity (imaginary part)	18.820043
Conductivity (S/m)	6.061524
Variation (%)	1.340000

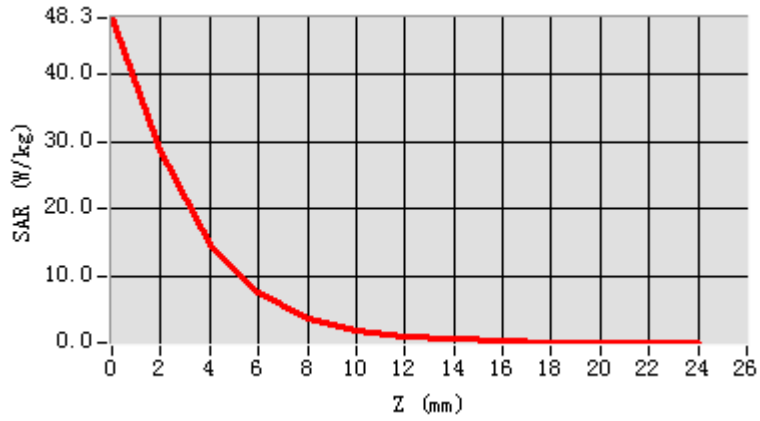


Maximum location: X=0.00, Y=6.00

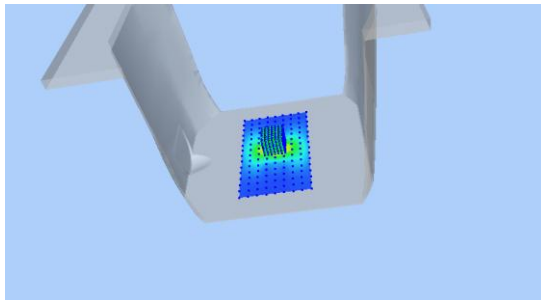
SAR Peak: 51.30 W/kg

SAR 10g (W/Kg)	5.840184
SAR 1g (W/Kg)	16.911052

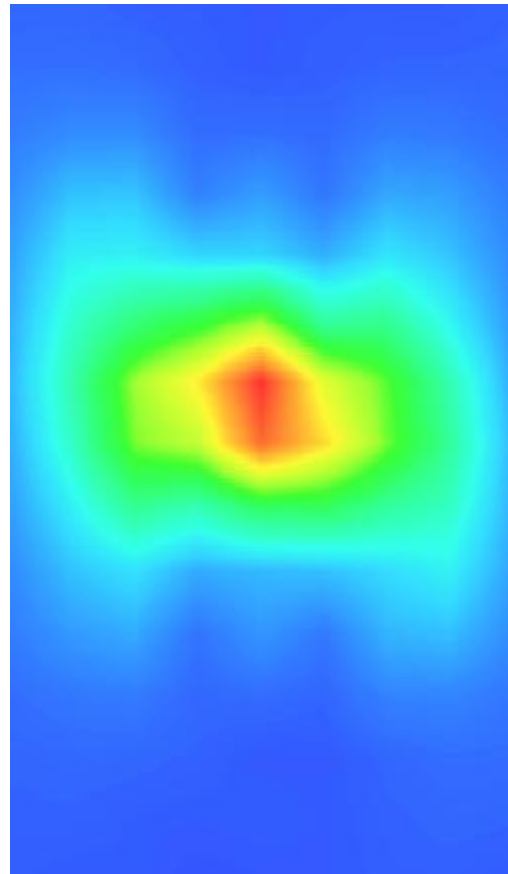
Z (m m)	0.00	2.00	4.00	6.00	8.00	10.0	12.0	14.0	16.0	18.0	20.0	22.0
SAR R (W/ Kg)	48.3	28.6	14.6	7.40	3.68	1.83	0.93	0.47	0.25	0.13	0.07	0.05
	472	209	589	39	57	35	18	60	13	08	83	22



3D screen shot



Hot spot position



13. Appendix C. Plots of High SAR Measurement

Table of contents
MEASUREMENT 1 GSM 850 Head
MEASUREMENT 2 GSM 850 Body
MEASUREMENT 3 GSM 1900 Head
MEASUREMENT 4 GSM 1900 Body
MEASUREMENT 5 WCDMA Band 2 Head
MEASUREMENT 6 WCDMA Band 2 Body
MEASUREMENT 7 WCDMA Band 4 Head
MEASUREMENT 8 WCDMA Band 4 Body
MEASUREMENT 9 WCDMA Band 5 Head
MEASUREMENT 10 WCDMA Band 5 Body
MEASUREMENT 11 WLAN 5.8G Head
MEASUREMENT 12 WLAN 5.2G Head
MEASUREMENT 13 WLAN 5.2G Body
MEASUREMENT 14 WLAN 5.8G Body
MEASUREMENT 15 WLAN 2.4G Head
MEASUREMENT 16 WLAN 2.4G Body
MEASUREMENT 17 LTE Band 2 Head
MEASUREMENT 18 LTE Band 2 Body
MEASUREMENT 19 LTE Band 4 Head
MEASUREMENT 20 LTE Band 4 Body
MEASUREMENT 21 LTE Band 5 Head
MEASUREMENT 22 LTE Band 5 Body
MEASUREMENT 23 LTE Band 7 Head
MEASUREMENT 24 LTE Band 7 Body
MEASUREMENT 25 LTE Band 12 Head
MEASUREMENT 26 LTE Band 12 Body
MEASUREMENT 27 LTE Band 17 Head
MEASUREMENT 28 LTE Band 17 Body

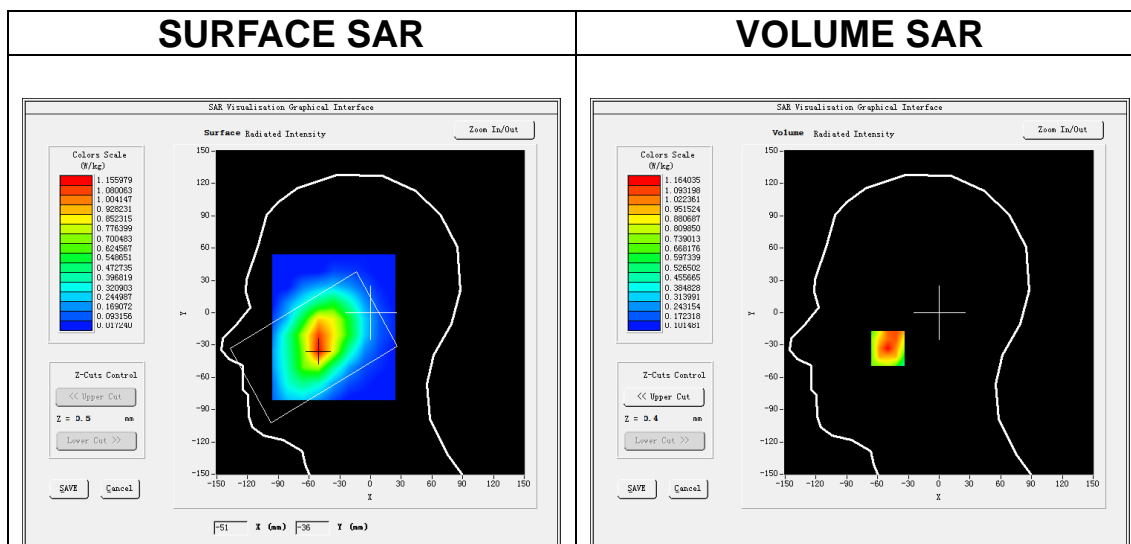
MEASUREMENT 1

A. Experimental conditions.

Area Scan	<u>dx=15mm dy=15mm, h= 5.00 mm</u>
ZoomScan	<u>5x5x7,dx=8mm dy=8mm dz=5mm</u>
Phantom	<u>Left head</u>
Device Position	<u>Cheek</u>
Band	<u>GSM850</u>
Channels	<u>High</u>
Signal	<u>TDMA (Crest factor: 4.0)</u>

B. SAR Measurement Results

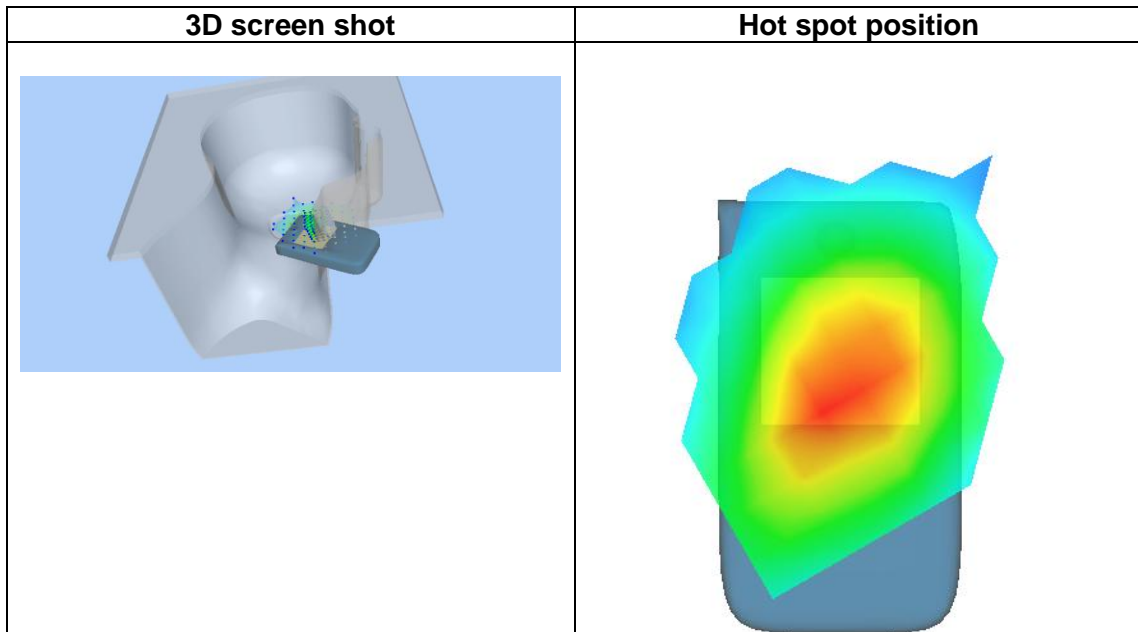
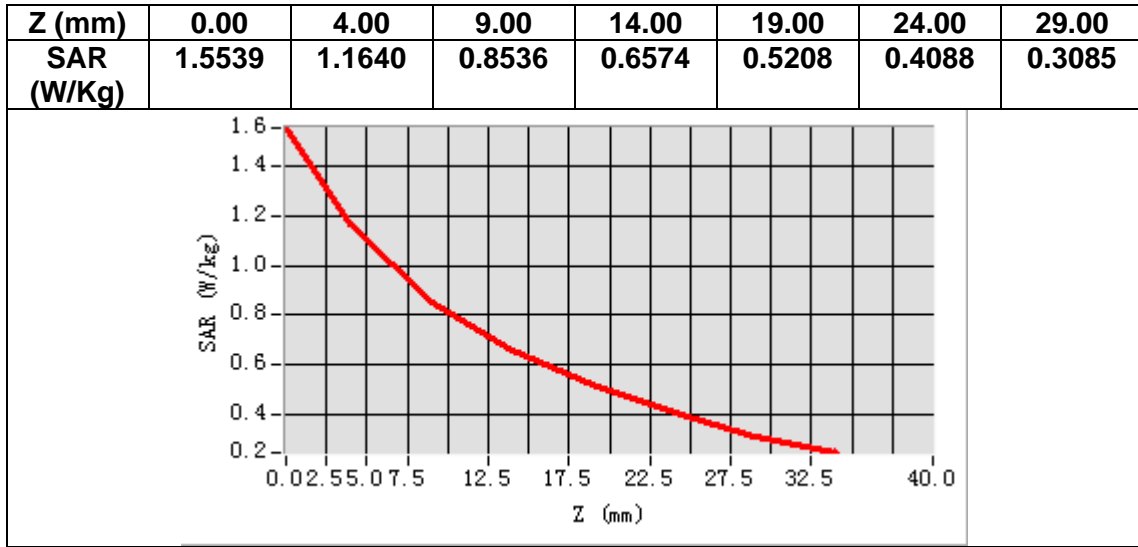
Frequency (MHz)	848.800000
Relative permittivity (real part)	40.284920
Relative permittivity (imaginary part)	20.227961
Conductivity (S/m)	0.953861
Variation (%)	1.020000



Maximum location: X=-50.00, Y=-33.00

SAR Peak: 1.55 W/kg

SAR 10g (W/Kg)	0.812759
SAR 1g (W/Kg)	1.043849



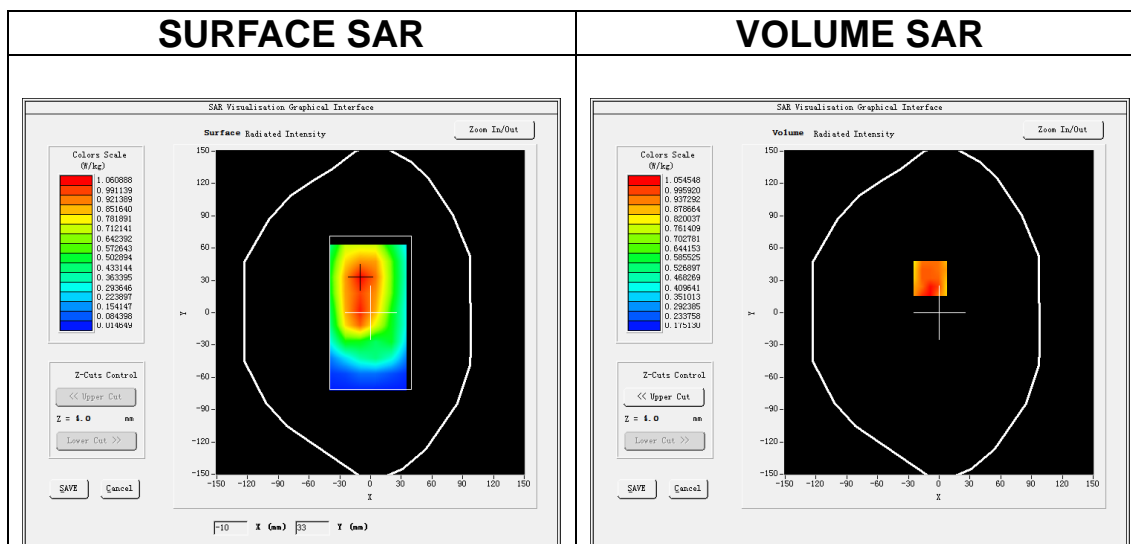
MEASUREMENT 2

A. Experimental conditions.

Area Scan	<u>dx=15mm dy=15mm, h= 5.00 mm</u>
ZoomScan	<u>5x5x7,dx=8mm dy=8mm dz=5mm</u>
Phantom	<u>Validation plane</u>
Device Position	<u>Body</u>
Band	<u>GSM850</u>
Channels	<u>Middle</u>
Signal	<u>TDMA (Crest factor: 4.0)</u>

B. SAR Measurement Results

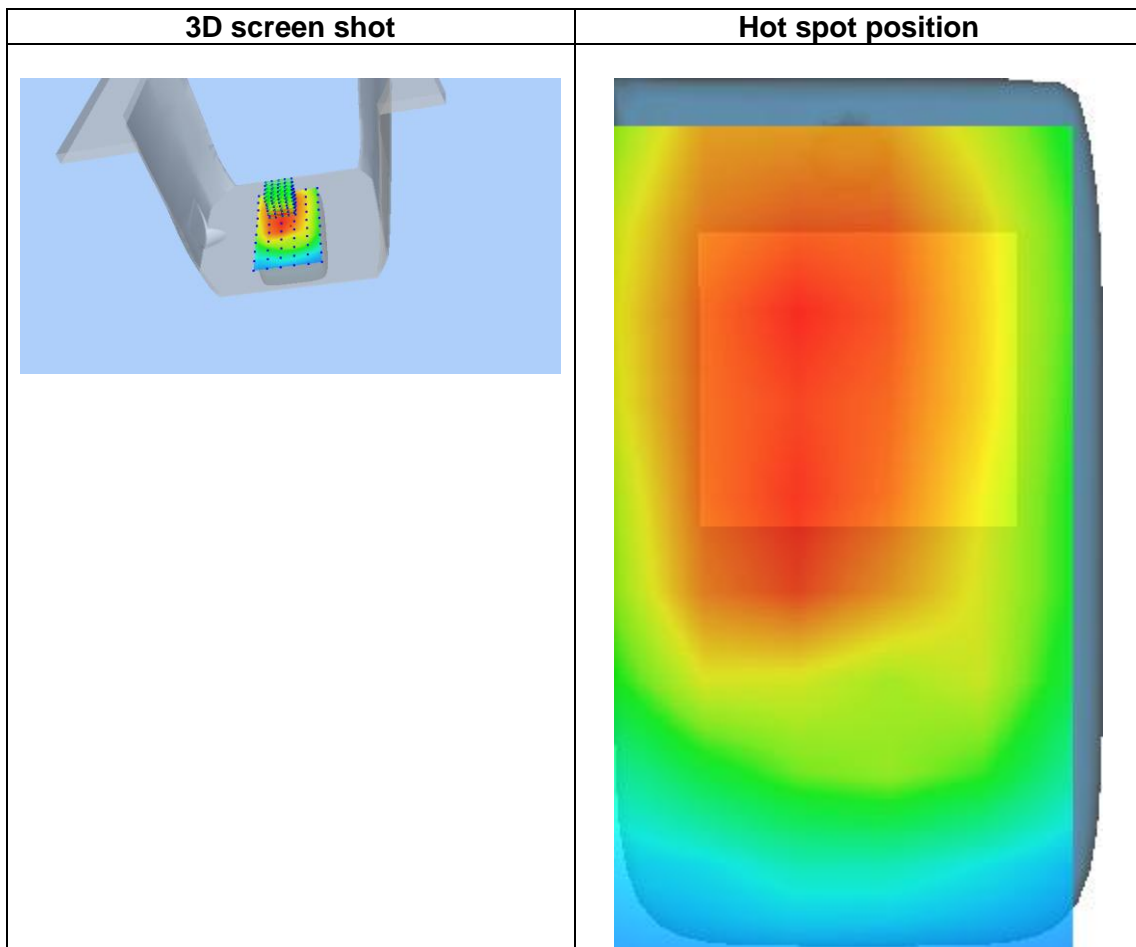
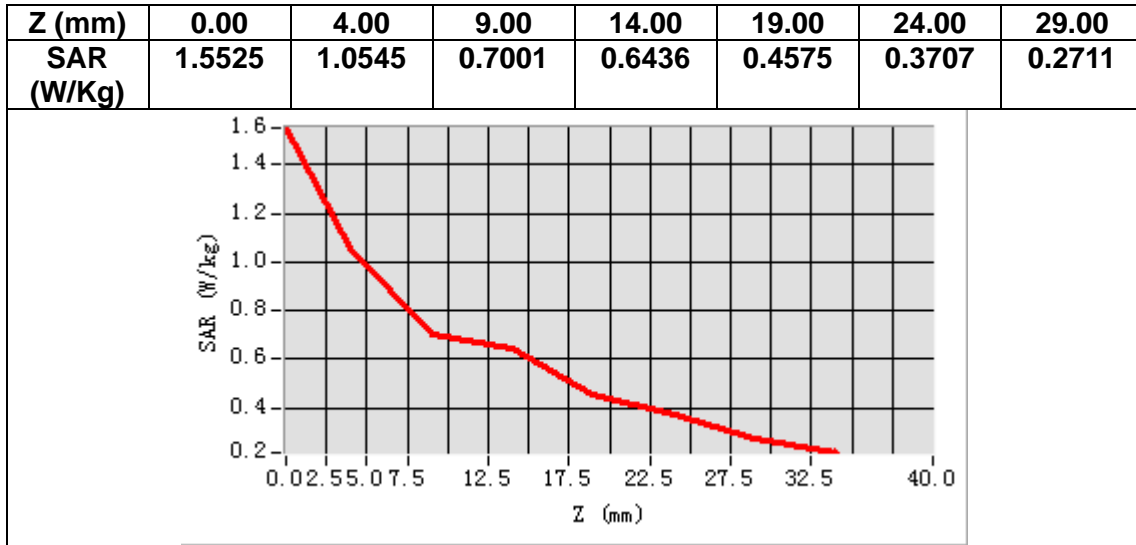
Frequency (MHz)	836.400000
Relative permittivity (real part)	54.379581
Relative permittivity (imaginary part)	21.722740
Conductivity (S/m)	1.009383
Variation (%)	-1.560000



Maximum location: X=-9.00, Y=32.00

SAR Peak: 1.40 W/kg

SAR 10g (W/Kg)	0.759504
SAR 1g (W/Kg)	1.050589



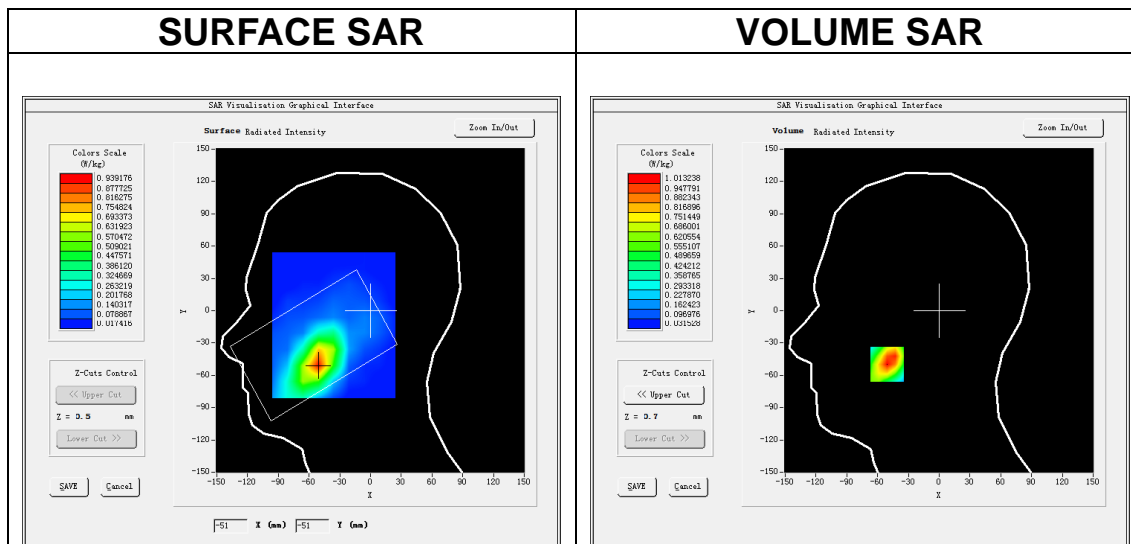
MEASUREMENT 3

A. Experimental conditions.

<u>Area Scan</u>	<u>dx=15mm dy=15mm, h= 5.00 mm</u>
<u>ZoomScan</u>	<u>5x5x7,dx=8mm dy=8mm dz=5mm</u>
<u>Phantom</u>	<u>Left head</u>
<u>Device Position</u>	<u>Cheek</u>
<u>Band</u>	<u>GSM1900</u>
<u>Channels</u>	<u>Middle</u>
<u>Signal</u>	<u>TDMA (Crest factor: 2.0)</u>

B. SAR Measurement Results

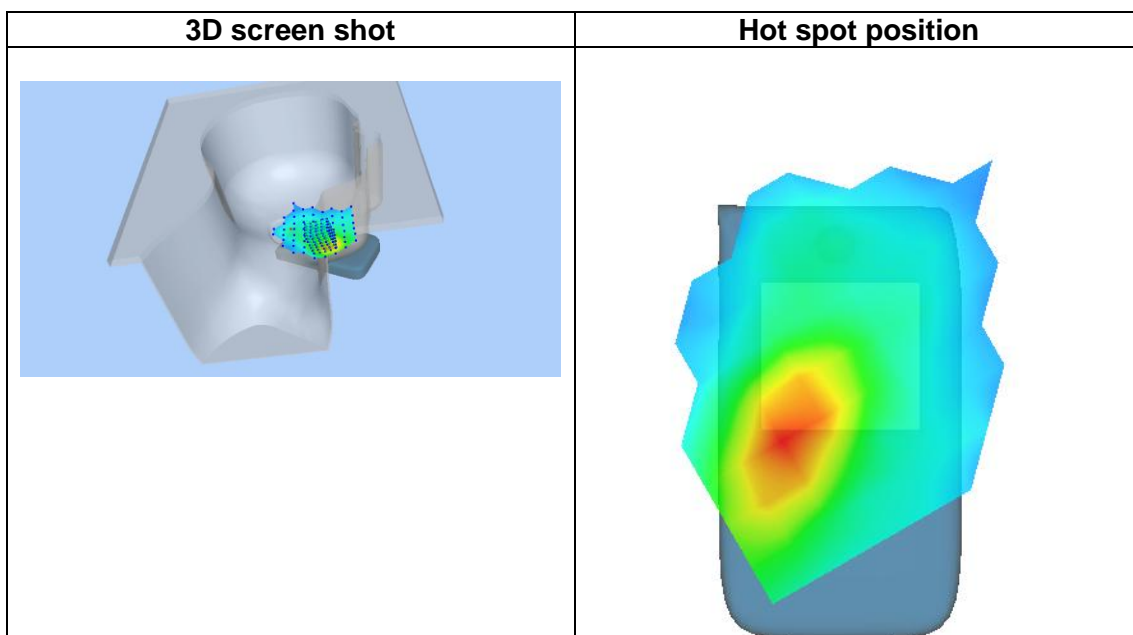
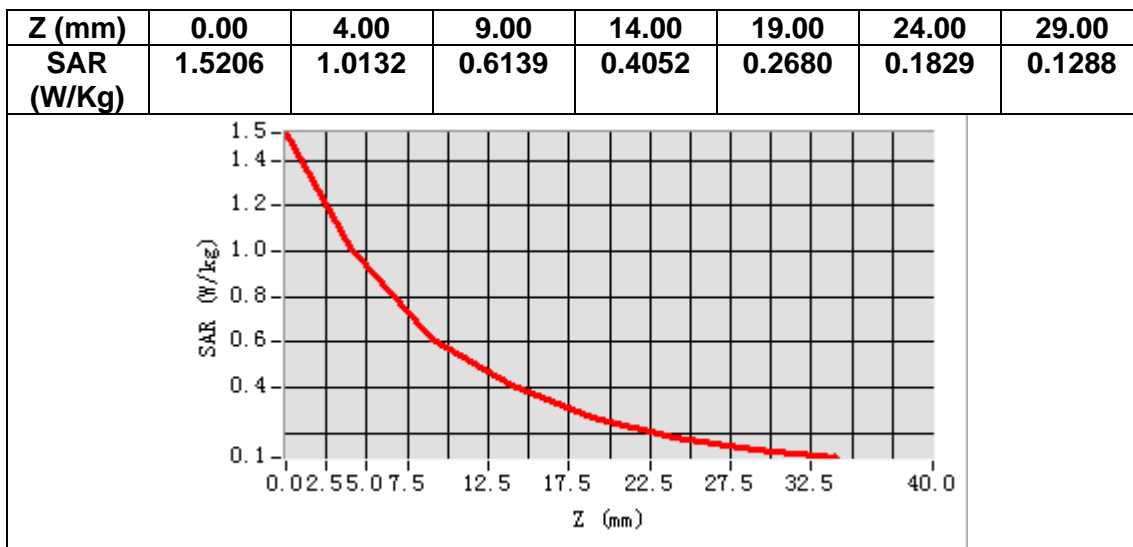
Frequency (MHz)	1880.000000
Relative permittivity (real part)	41.018200
Relative permittivity (imaginary part)	13.744300
Conductivity (S/m)	1.435516
Variation (%)	0.600000



Maximum location: X=-51.00, Y=-50.00

SAR Peak: 1.54 W/kg

SAR 10g (W/Kg)	0.548766
SAR 1g (W/Kg)	0.956800



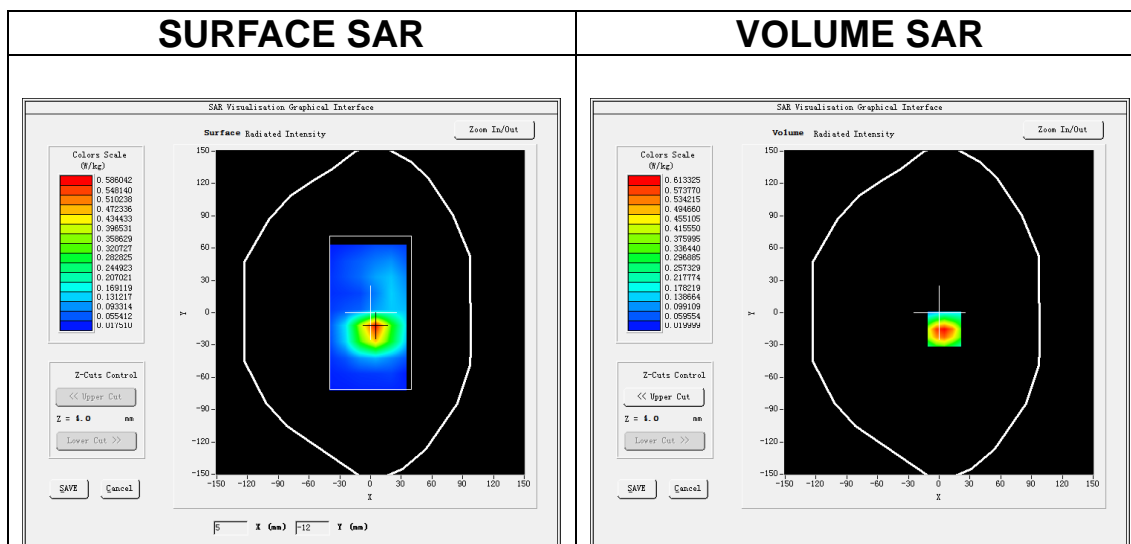
MEASUREMENT 4

A. Experimental conditions.

Area Scan	<u>dx=15mm dy=15mm, h= 5.00 mm</u>
ZoomScan	<u>5x5x7,dx=8mm dy=8mm dz=5mm</u>
Phantom	<u>Validation plane</u>
Device Position	<u>Body</u>
Band	<u>GSM1900</u>
Channels	<u>Middle</u>
Signal	<u>TDMA (Crest factor: 2.0)</u>

B. SAR Measurement Results

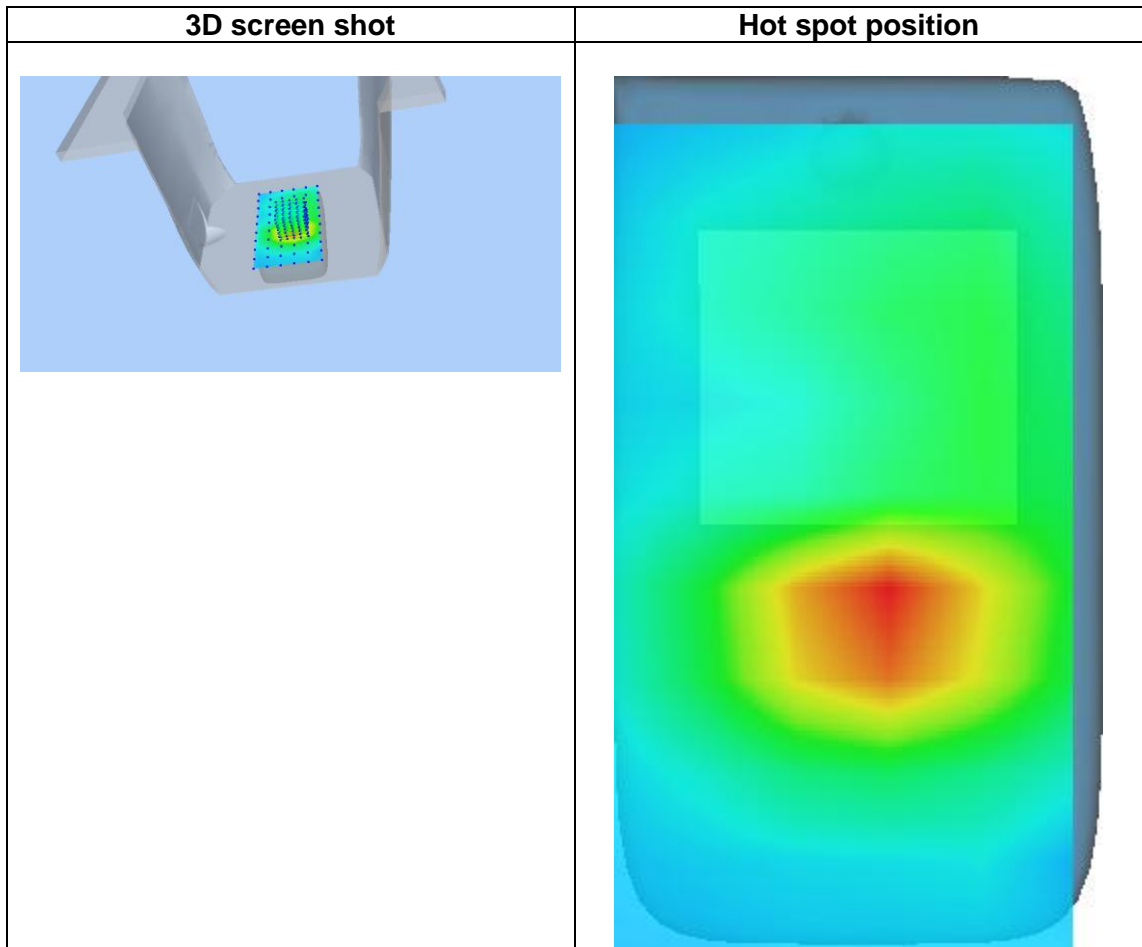
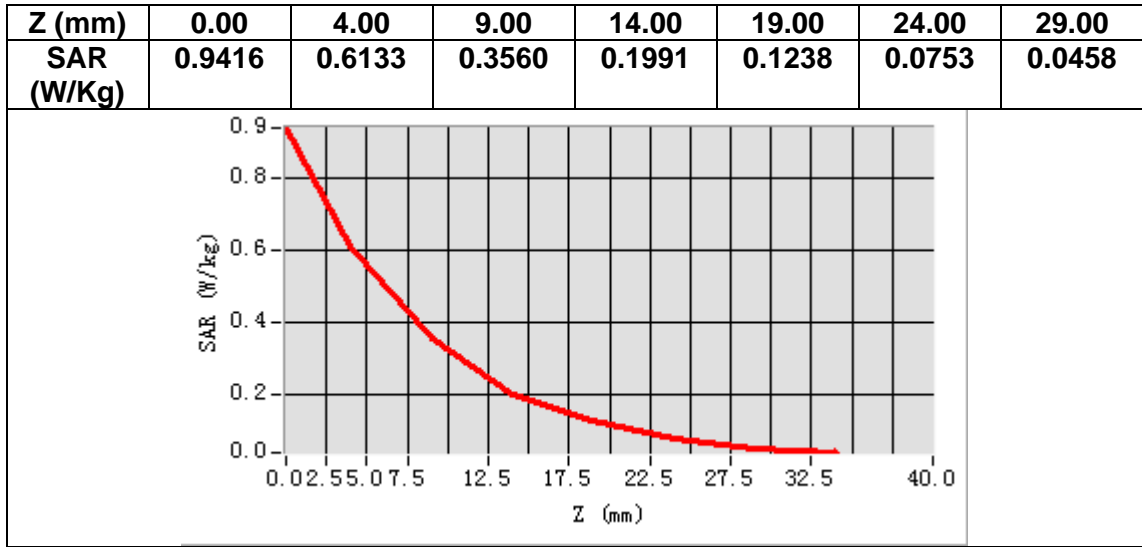
Frequency (MHz)	1880.000000
Relative permittivity (real part)	52.578899
Relative permittivity (imaginary part)	14.937700
Conductivity (S/m)	1.560160
Variation (%)	0.230000



Maximum location: X=5.00, Y=-15.00

SAR Peak: 1.03 W/kg

SAR 10g (W/Kg)	0.311658
SAR 1g (W/Kg)	0.605025



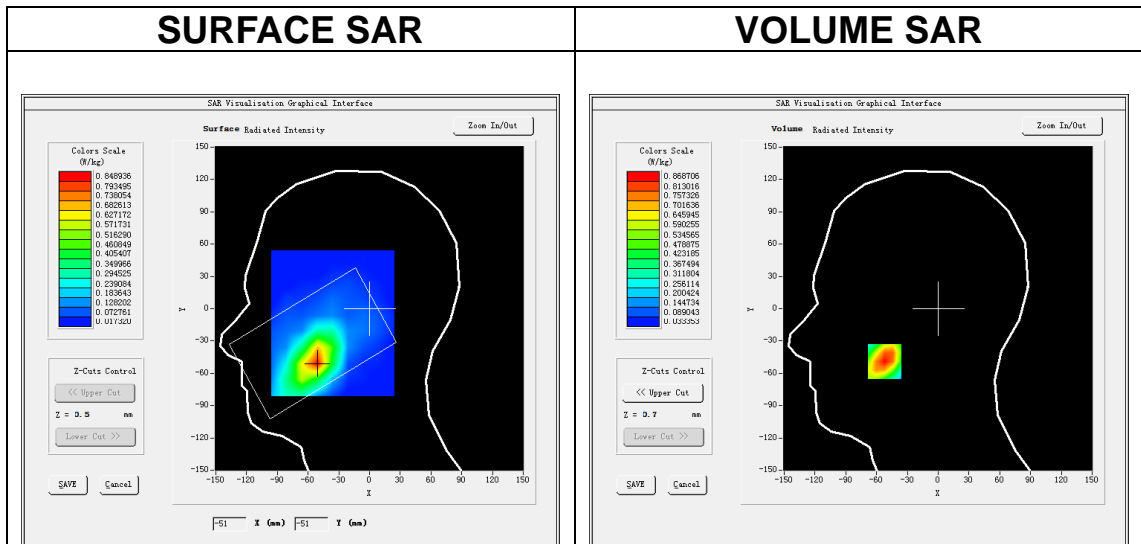
MEASUREMENT 5

A. Experimental conditions.

Area Scan	<u>dx=15mm dy=15mm, h= 5.00 mm</u>
ZoomScan	<u>5x5x7,dx=8mm dy=8mm dz=5mm</u>
Phantom	<u>Left head</u>
Device Position	<u>Cheek</u>
Band	<u>Band2_WCDMA1900</u>
Channels	<u>Middle</u>
Signal	<u>WCDMA (Crest factor: 1.0)</u>

B. SAR Measurement Results

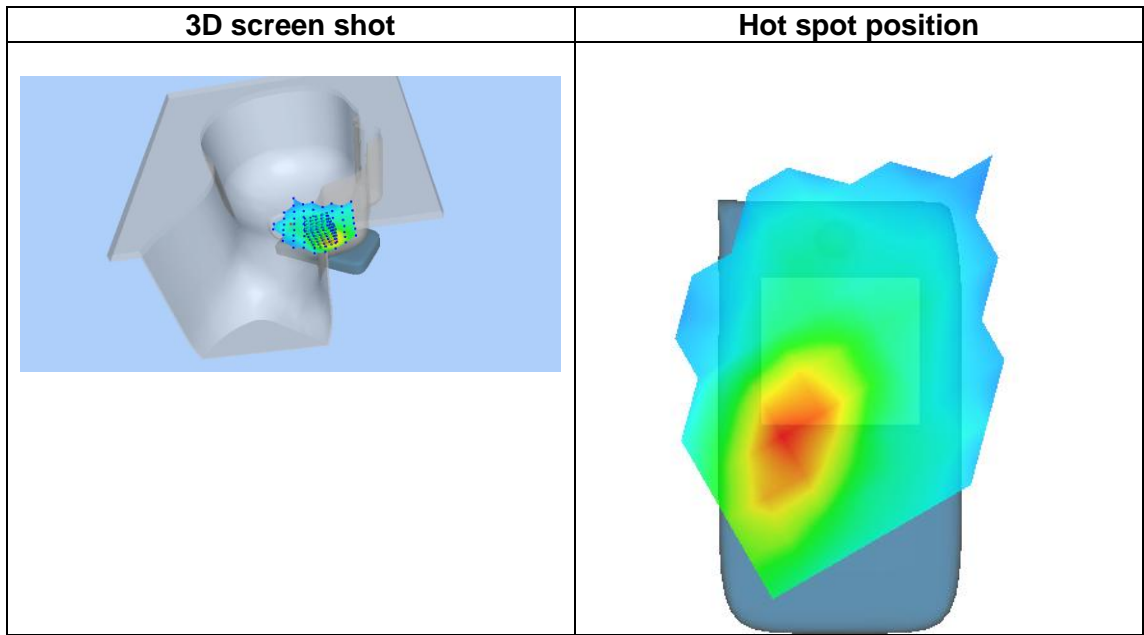
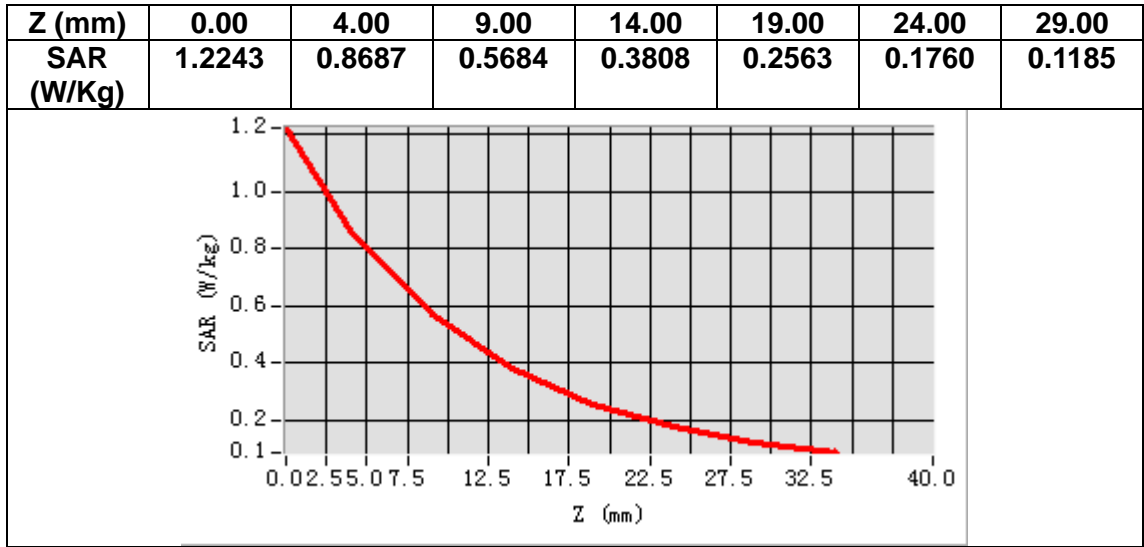
Frequency (MHz)	1880.000000
Relative permittivity (real part)	41.018200
Relative permittivity (imaginary part)	13.744300
Conductivity (S/m)	1.435516
Variation (%)	-1.680000



Maximum location: X=-52.00, Y=-49.00

SAR Peak: 1.23 W/kg

SAR 10g (W/Kg)	0.490005
SAR 1g (W/Kg)	0.830315



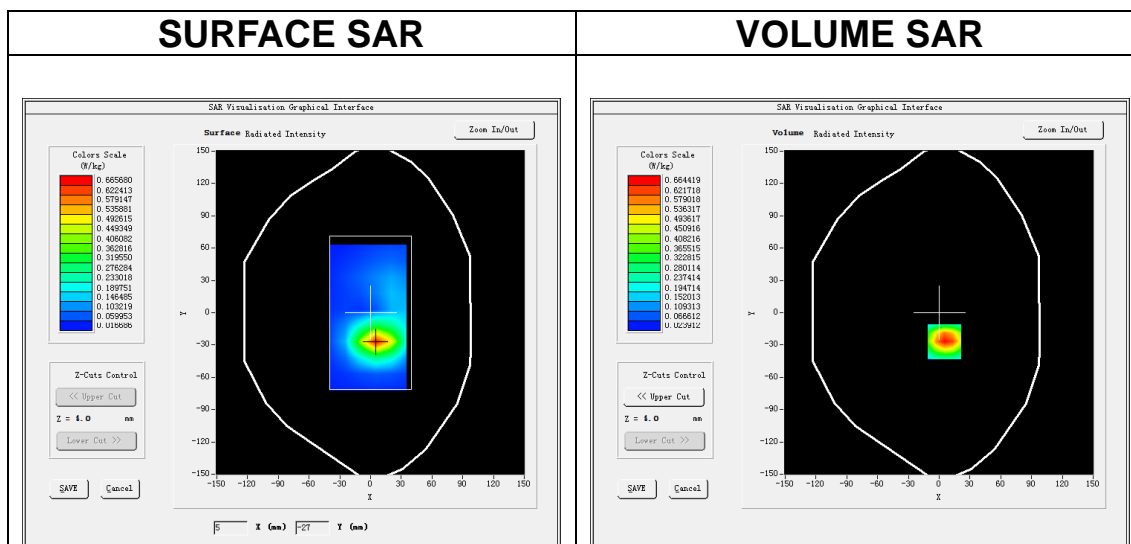
MEASUREMENT 6

A. Experimental conditions.

Area Scan	<u>dx=15mm dy=15mm, h= 5.00 mm</u>
ZoomScan	<u>5x5x7,dx=8mm dy=8mm dz=5mm</u>
Phantom	<u>Validation plane</u>
Device Position	<u>Body</u>
Band	<u>Band2_WCDMA1900</u>
Channels	<u>Middle</u>
Signal	<u>WCDMA (Crest factor: 1.0)</u>

B. SAR Measurement Results

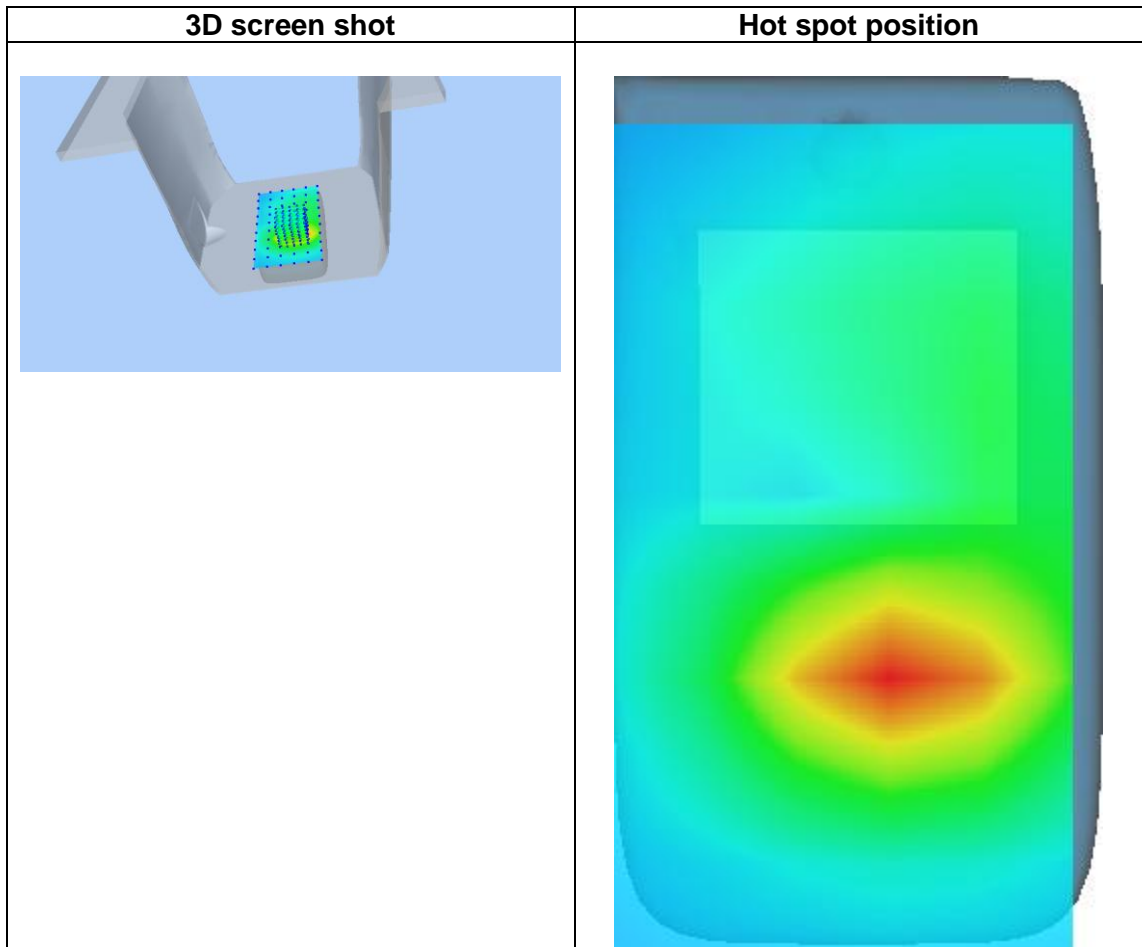
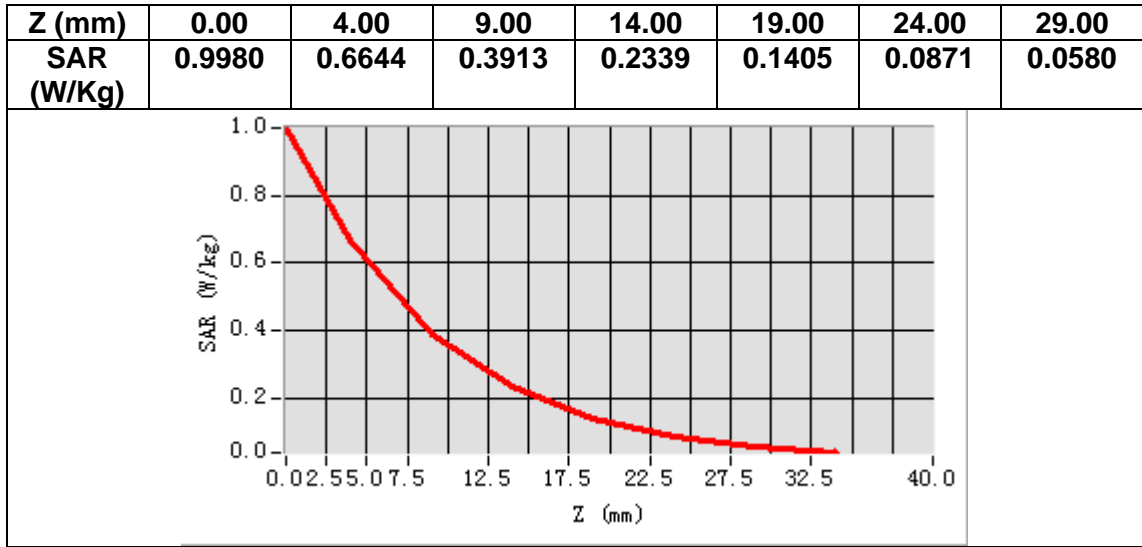
Frequency (MHz)	1880.000000
Relative permittivity (real part)	52.648899
Relative permittivity (imaginary part)	14.987700
Conductivity (S/m)	1.565382
Variation (%)	-0.050000



Maximum location: X=5.00, Y=-27.00

SAR Peak: 1.04 W/kg

SAR 10g (W/Kg)	0.341522
SAR 1g (W/Kg)	0.644242



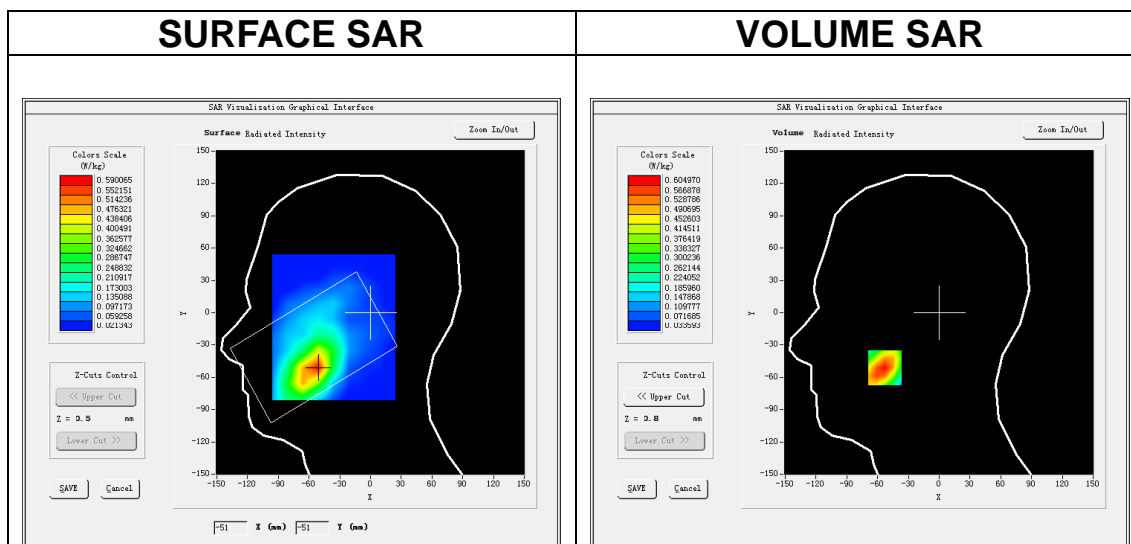
MEASUREMENT 7

A. Experimental conditions.

<u>Area Scan</u>	<u>dx=15mm dy=15mm, h= 5.00 mm</u>
<u>ZoomScan</u>	<u>5x5x7,dx=8mm dy=8mm dz=5mm</u>
<u>Phantom</u>	<u>Left head</u>
<u>Device Position</u>	<u>Cheek</u>
<u>Band</u>	<u>Band4 WCDMA1700</u>
<u>Channels</u>	<u>Middle</u>
<u>Signal</u>	<u>WCDMA (Crest factor: 1.0)</u>

B. SAR Measurement Results

Frequency (MHz)	1732.600000
Relative permittivity (real part)	38.937389
Relative permittivity (imaginary part)	14.095742
Conductivity (S/m)	1.356324
Variation (%)	-1.640000



Maximum location: X=-53.00, Y=-51.00

SAR Peak: 0.84 W/kg

SAR 10g (W/Kg)	0.362523
SAR 1g (W/Kg)	0.579524

