

# 深圳市亿圣邦科技有限公司 样品承认书

## SPECIFICATION FOR APPROVAL

公司名称 (客户填写) : 深圳卓创智能技术有限公司  
物料代码 (客户填写) : \_\_\_\_\_  
规格型号 (客户填写) : \_\_\_\_\_  
承认日期 (客户填写) : \_\_\_\_\_  
供应商名称 (SLK 填写) : 深圳市亿圣邦科技有限公司  
供应商规格型号 (SLK 填写) : WIFIMAIN:SLK-ZC-2611-L-115V-G

| 承 认 签 章  |            |     |              |     |     |
|--|------------|-----|--------------|-----|-----|
| 供 应 商 承 认 (SLK 填写栏)  |            |     | 深圳卓创智能科技有限公司 |     |     |
| 工 程 师  | 审 核        | 批 准 | 工 程 师        | 审 核 | 批 准 |
| 陈仕联  | 黄震         | 林美财 |              |     |     |
| 盖 章 签 署  |            |     | 盖 章 签 署      |     |     |
| 日 期  | 2023-07-12 |     | 日 期          |     |     |
| 批示: <input type="checkbox"/> 接受 <input type="checkbox"/> 有条件接受 |            |     |              |     |     |
| 备注 (客户填写) :  |            |     |              |     |     |

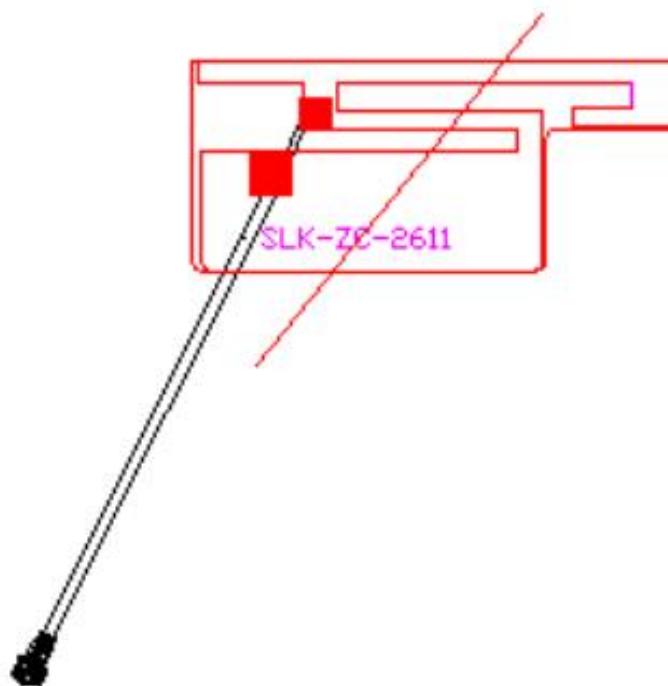
供应商名称: 深圳市亿圣邦科技有限公司  
供应商地址: 东莞市塘厦镇蛟乙塘银园街 5 号厂房 2 楼  
电 话: 0755-294200882 传 真: 0755-29163512

# WIFI Antenna (2611)

## 1. Explanation of Product number :

**S L K - Z C - 2 6 1 1 - L - 1 1 5 V - G**

**1            2            3            4            5**



Product Code:

(1) Customer:

ZC:卓创

(2) Project:

2611: SLK-ZC-2611 (WIFI antenna)

(3) Welding Position

L: Left

(4) Cable Length:

115V: 115\*0.81MM四代端子

(5) Cable Color

G: Gray

## 2. Features

\*Stable and reliable in performances

\*Compact size

\*RoHS compliance

### 3. Applications

- \* IEEE802.11 (a/b/g/n)
- \* Hand-held devices when WIFI (802.11a/b/g/n) functions are needed

### 4. Description

Holy bond's FPC antenna series are specially designed for WIFI (802.11a/b/g/n) applications. Based on Holy bond's proprietary design and processes, this FPC antenna has excellent stability and sensitivity to consistently provide high signal reception efficiency.

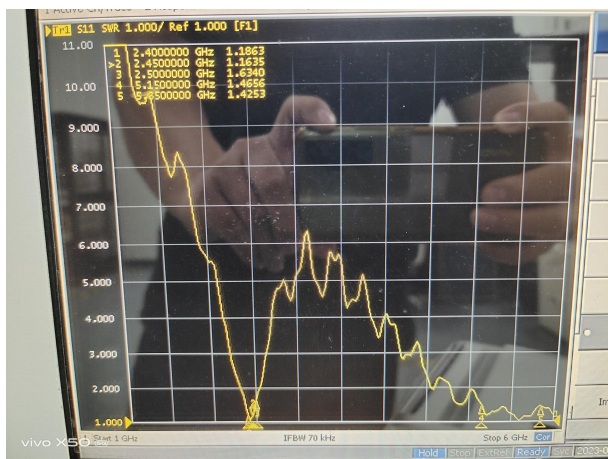
### 5. Electrical Specifications

5-1

| Characteristics                   | Specifications     | Unit |
|-----------------------------------|--------------------|------|
| Outline Dimensions                | 25.43x 20.09x 0.12 | mm   |
| Center Frequency                  | 2.4-2.5-5.15-5.85  | GHz  |
| Bandwidth(under-10dB return loss) | 130min             | MHz  |
| VSWR                              | 3max               |      |

5-2.

VSWR

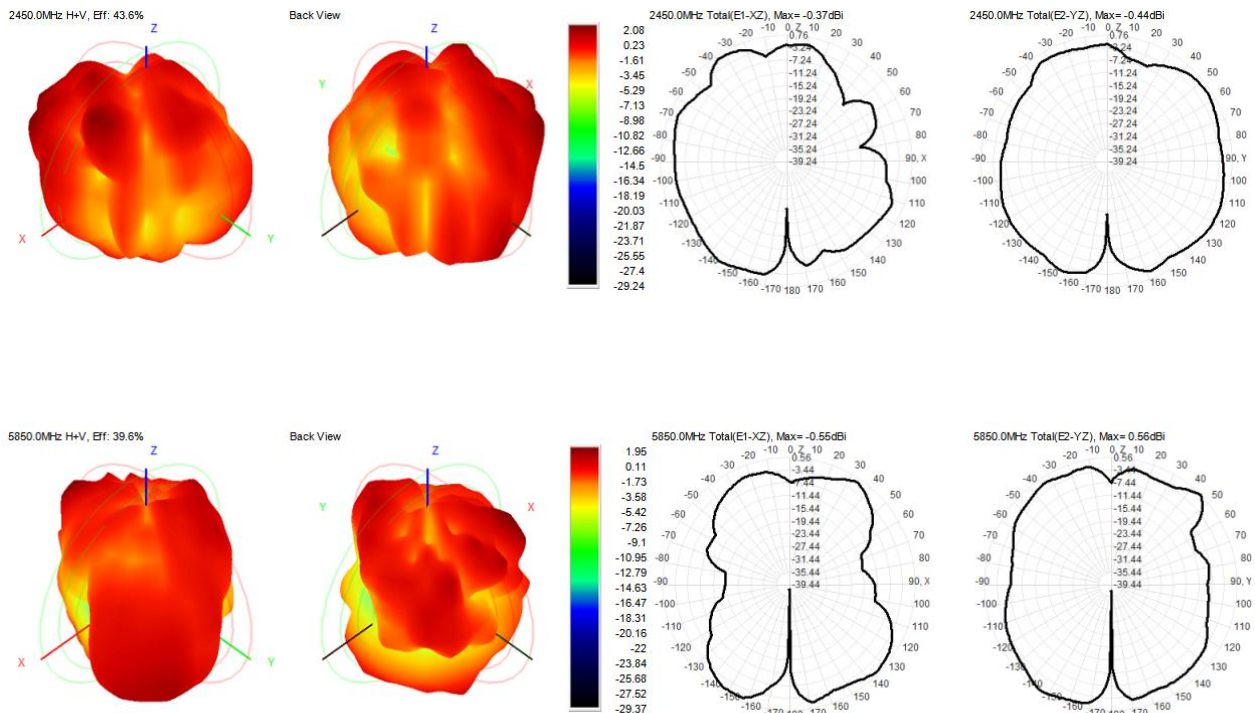


S11

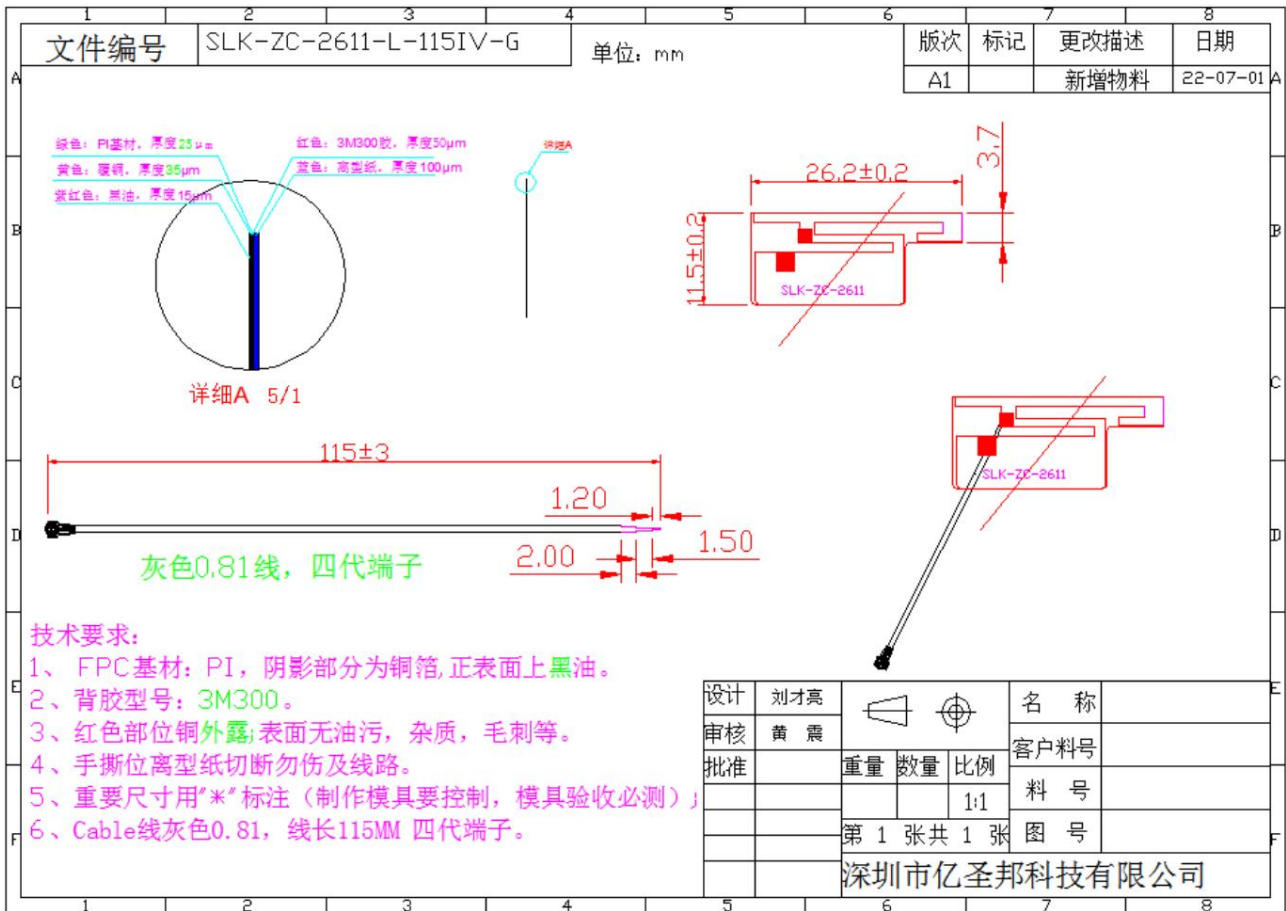


### 5-3.WIFI +BT Antenna Gain/Efficiency/Radiation Pattern of 3D

| Frequency (MHz) | Efficiency (dBi) | Gain (dBi) | Efficiency (%) |
|-----------------|------------------|------------|----------------|
| 2400.0          | -3.69            | 1.24       | 42.72          |
| 2410.0          | -3.62            | 1.46       | 43.45          |
| 2420.0          | -3.64            | 1.80       | 43.25          |
| 2430.0          | -3.69            | 1.98       | 42.80          |
| 2440.0          | -3.65            | 2.03       | 43.16          |
| 2450.0          | -3.61            | 2.08       | 43.60          |
| 2460.0          | -3.45            | 2.05       | 45.14          |
| 2470.0          | -3.34            | 2.01       | 46.34          |
| 2480.0          | -3.32            | 2.02       | 46.52          |
| 2490.0          | -3.38            | 2.02       | 45.90          |
| 2500.0          | -3.31            | 2.07       | 46.69          |
| 5150.0          | -4.93            | 1.20       | 32.12          |
| 5350.0          | -4.72            | 1.46       | 33.71          |
| 5550.0          | -3.82            | 1.77       | 41.54          |
| 5750.0          | -3.66            | 2.22       | 43.02          |
| 5850.0          | -4.02            | 1.95       | 39.60          |



## 6. Antenna Dimensions (unit: mm)



## 7. Antenna Picture