

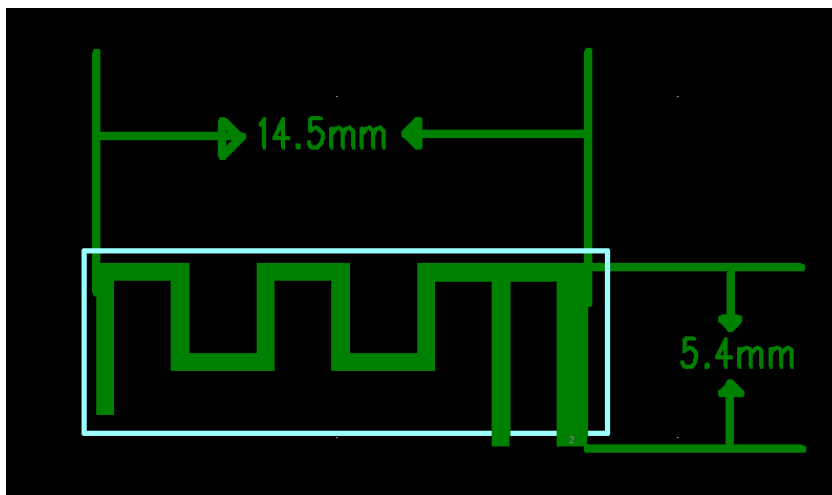
BT Antenna Product Approval

Introduction to antenna

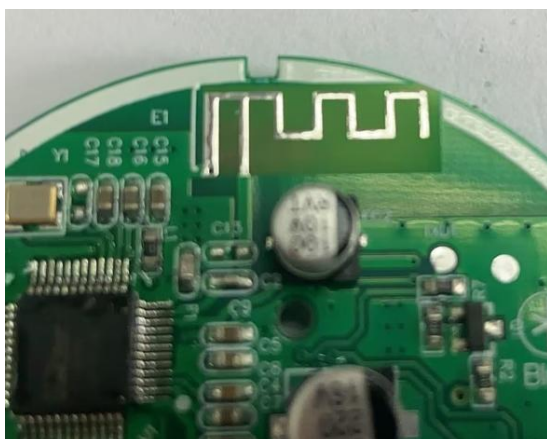
Our Bluetooth antenna is directly made on PCB board. The antenna is made of copper and tin spray process. The thickness of copper foil is H / hoz, and the plate is FR-4 with thickness of 1.0mm,

2、 Antenna shape

1). Dimension drawing:14.5*5.4*1.0mm



2). Physical drawing:



3).antenna type:

PCB Antenna;

3、 Antenna parameters

The working frequency of Bluetooth antenna is 2402-2480 MHz, and resonance occurs in this frequency band. The following table shows the main parameters of the antenna.

Bluetooth built in antenna	
Frequency (MHz)	2402 ~ 2480 MHz
VSWR	≤ 1.92
Impedance	50 Ohm Nominal
Return Loss	-10 dB Max
Radiation	Omni-directional
Gain (Peak)	-0.347 dBi
Polarization	Linear, Vertical
Admitted Power	2W
Connector	Tin