



**PROTECHT**

WWW.SWA.ONE

# PROTECHT User Manual

## Single Charging Case

## ELECTRICAL SAFETY INFORMATION

Operating Conditions: Single Charging Case

1. External Operating Temperature: -10 to +30C
2. Input Power (DC supply): 5V 1A



This system complies with Part 15 of the FCC rules. Operation is subject to the following conditions:

1. This device may not cause harmful interference, and
2. This device must accept any interference received including interference that may cause undesired operation.

No changes shall be made to the equipment without the manufacturer's permission as this may void the user's authority to operate the equipment.

This equipment should be used with a minimum distance of 20cm between the device and users and meets the mobile RF exposure requirements of 47 CFR part 2.1091 and part 1.1307.

### Charging and Sleep mode

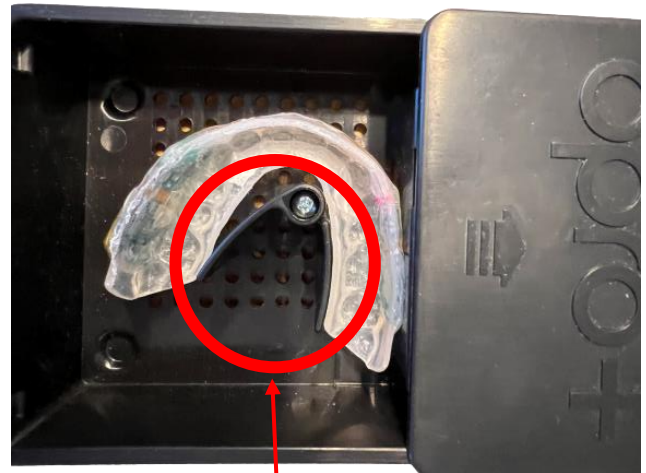
The PROTECHT Version 2 mouthguard requires around 4 hours of charge to full voltage (around 4.2V). The guard will last for around 4 hours while the processor is on. The Mouthguard has a sleep mode function where after 10 minutes it will switch off should no major movements have been detected on the mouthguard. The mouthguard requires a few impacts to 'wake up'. When connecting the mouthguard to Bluetooth prior to a session in order to activate the internal clock it is possible to disable the sleep function for a set time using the associated mimic app.

In order to charge the guard successfully the mouthguard charging coil needs to be positioned over the circular charging board as shown below. For optimal charging, it is very important that the coils are aligned in parallel. It is also important that the mouthguard is fixed as close to the charging coil as possible. The charging case can be personalised to fix the individual mouthguard in place using the adjustable arms. Successful charging is taking place when a red light is emitted from the LED as shown. The green Light on the side of the charging case will continually flash green while the mouthguard is connected on charge.

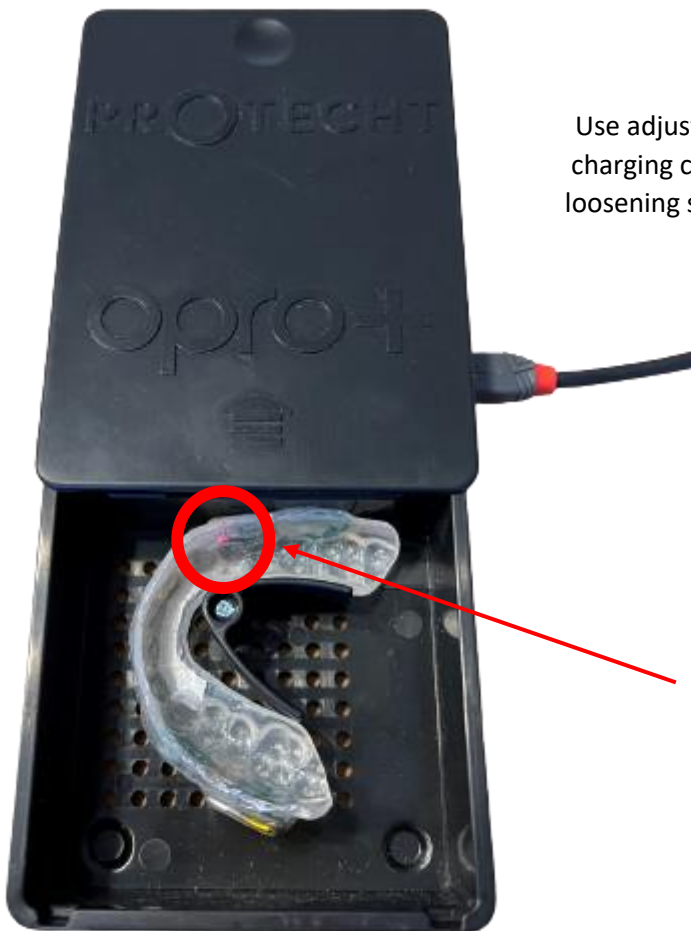




Line charging coil on the mouthguard to the charging coil on side of case



Use adjustable arms to secure the mouthguard against the charging coil. Position of arms can be adjusted if needed by loosening screw. Arms should push the mouthguard as close to the coil as possible.



Ensure red light stays on, this indicates the mouthguard is being charged properly.