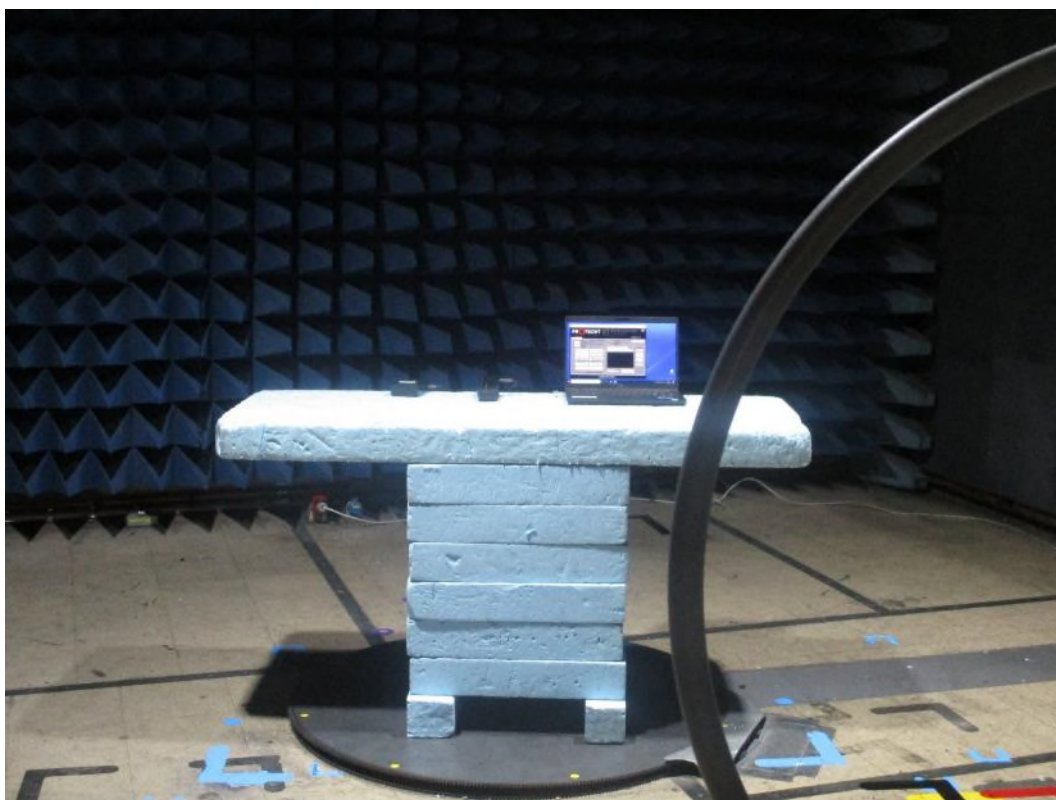


1.1 AC power line conducted emissions

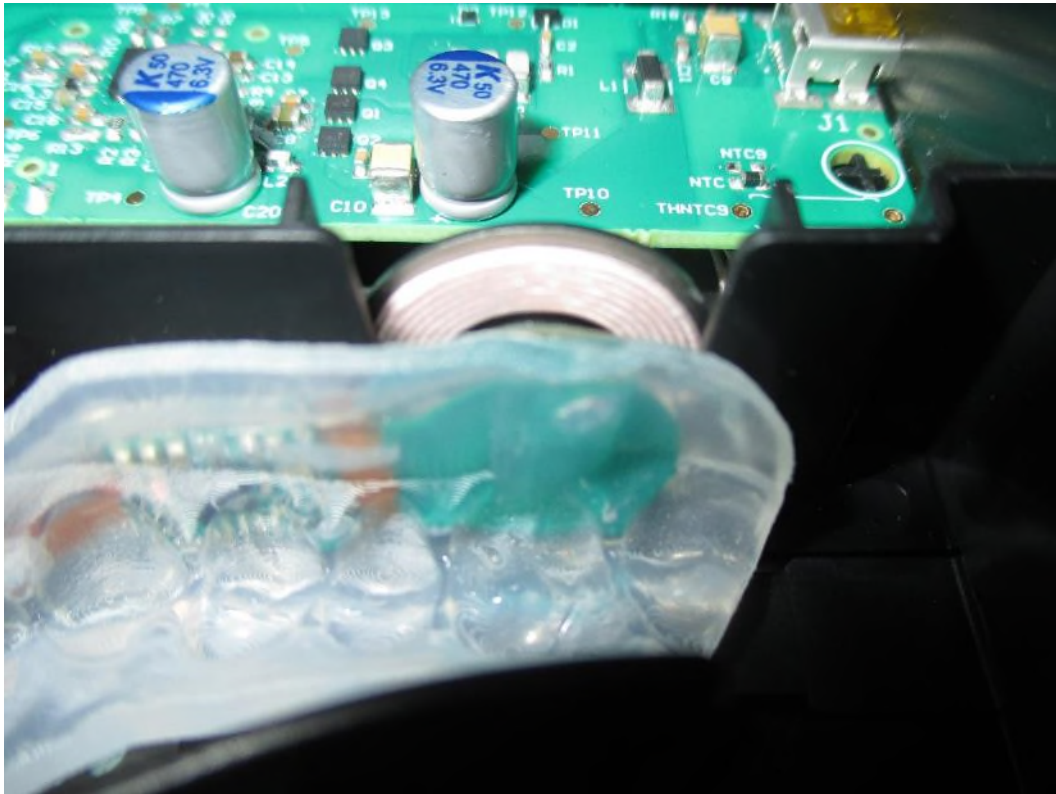


1.2 Radiated emissions 9 - 150 kHz

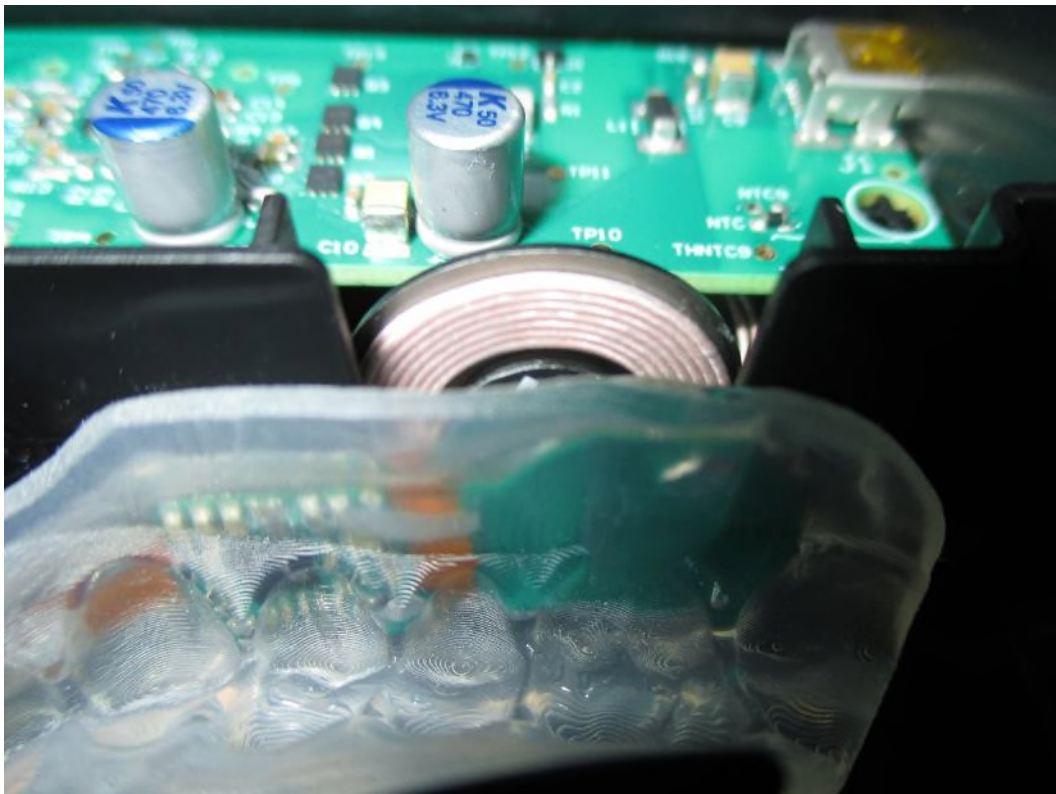




EUT with mouthguard in position 1

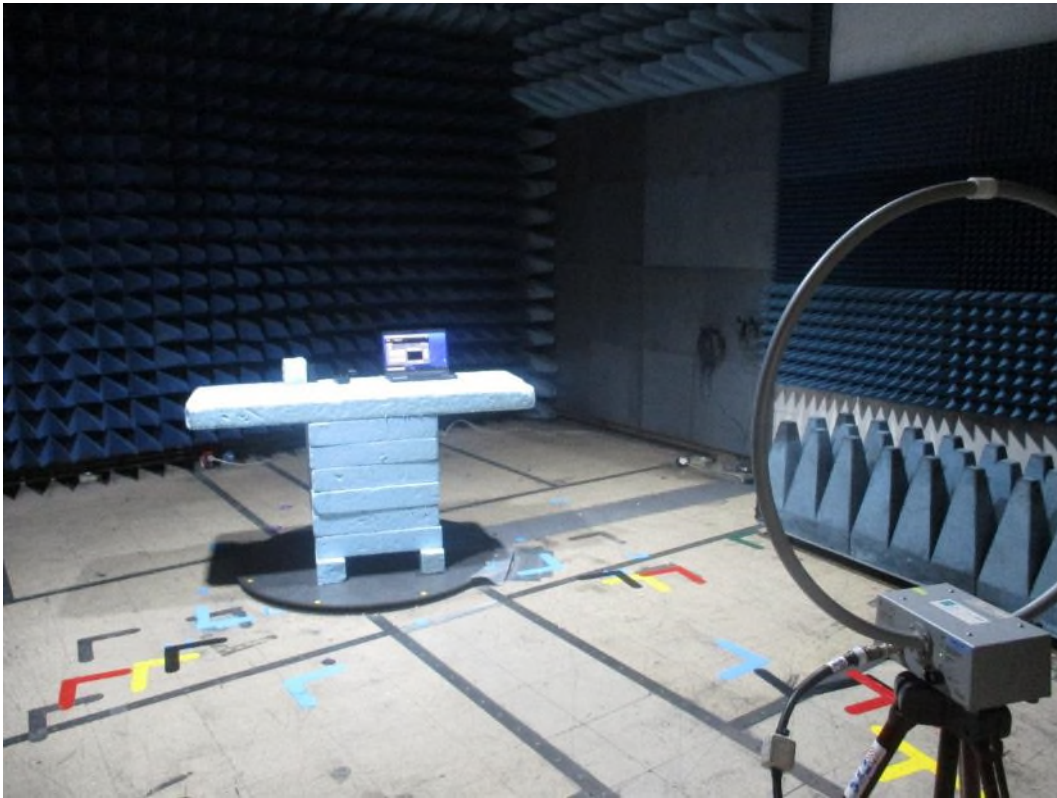


EUT with mouthguard in position 2 (best aligned position)



EUT with mouthguard in position 3

1.3 Radiated emissions 150 kHz - 30 MHz

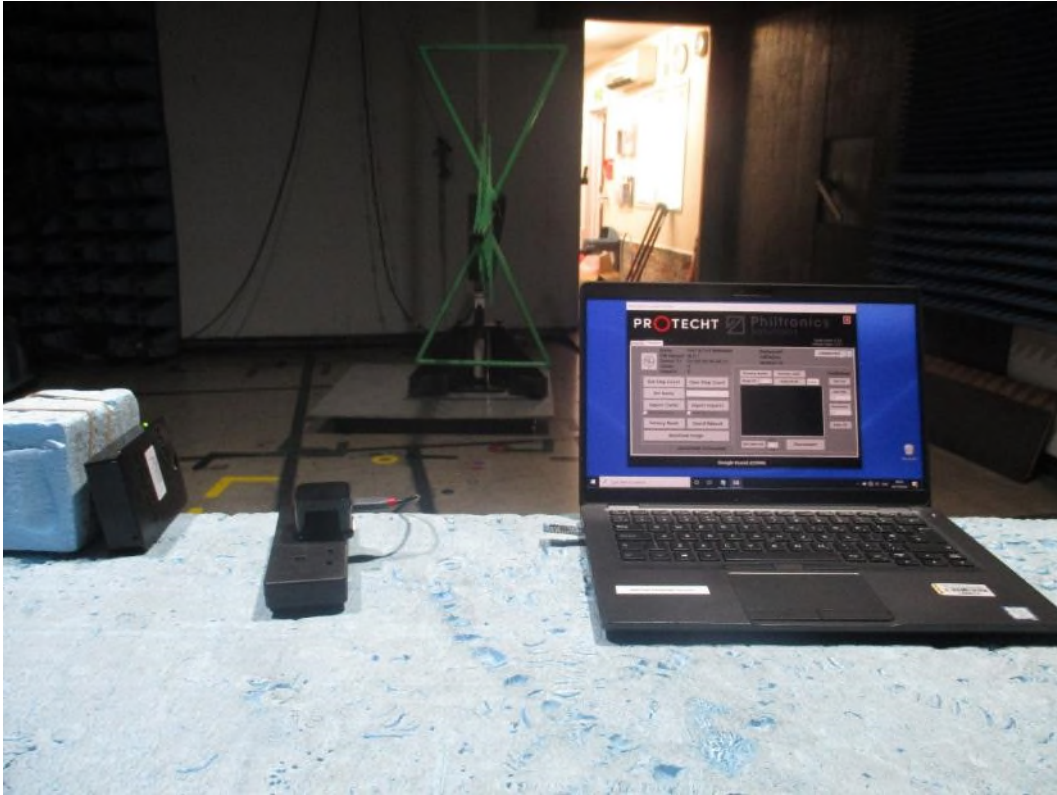


Note: See also mouthguard position photos section 8.11

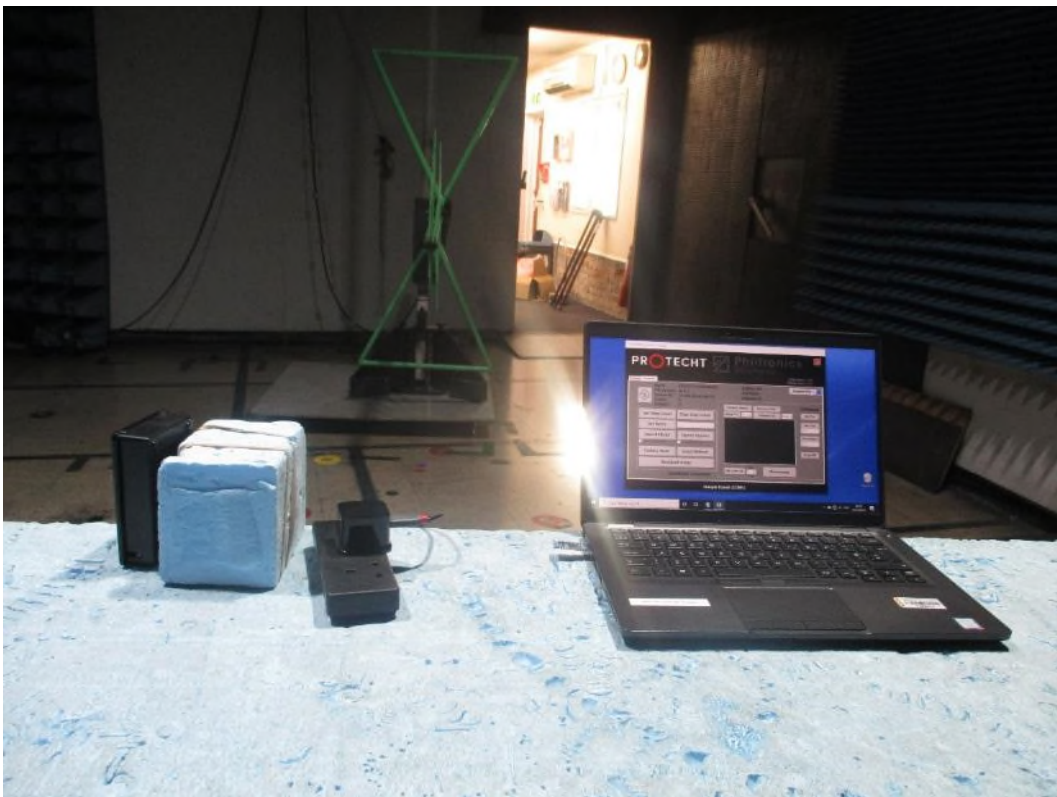
1.4 Radiated emissions 30 MHz -1 GHz



EUT Flat



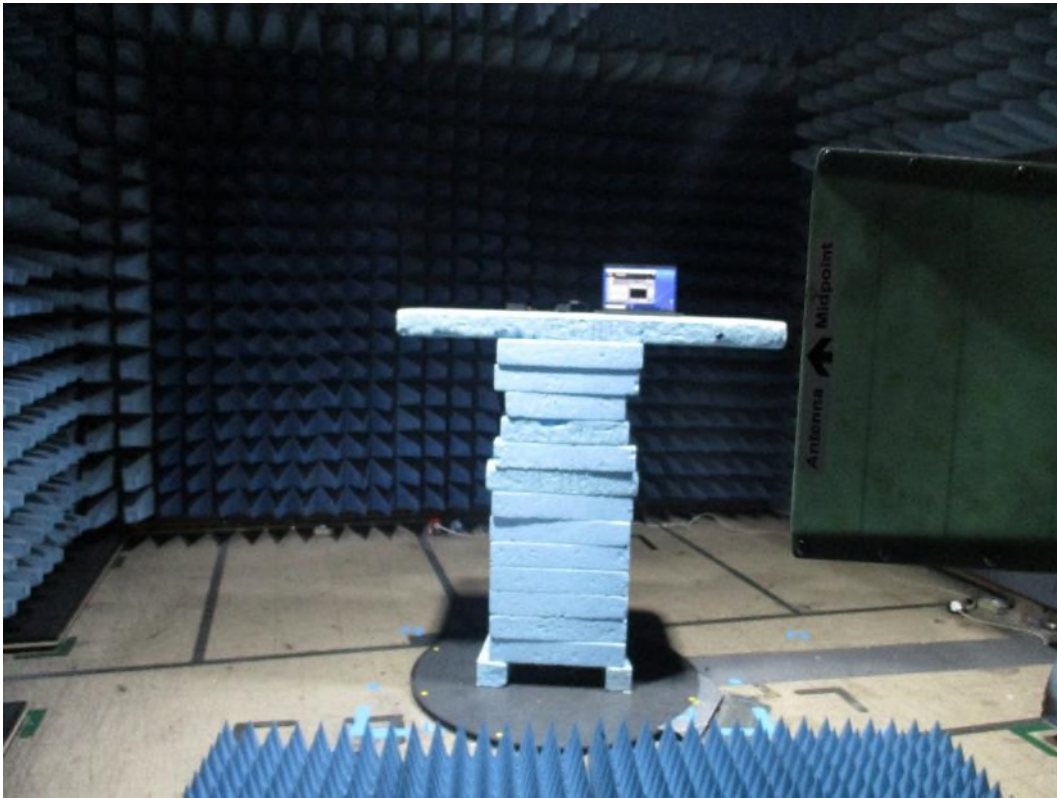
EUT Side



EUT Upright

Note: See also mouthguard position photos section 8.11

1.5 Radiated emissions above 1 GHz







Note: See also mouthguard position photos section 8.11