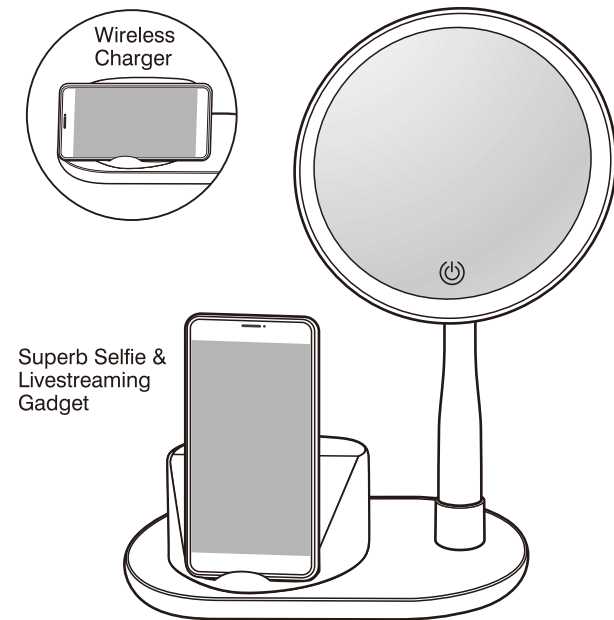
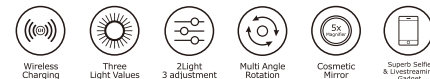


# Wireless Charging Makeup Livestreaming Selfie Mirror

## User Guide

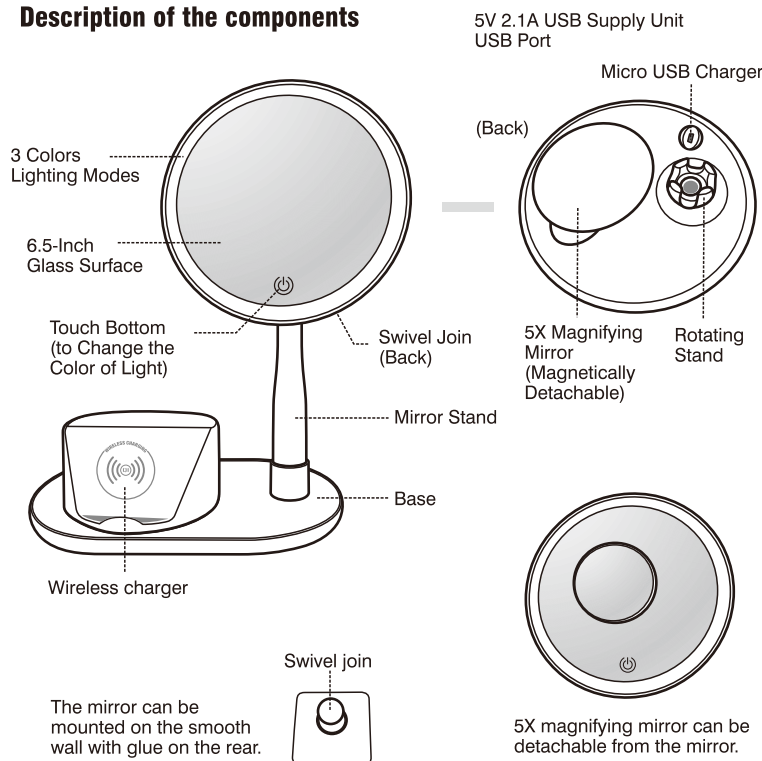


Superb Selfie & Livestreaming Gadget



- Type: DN-J020A
- Please use the corresponding product, and pictures are just for reference.

### Description of the components



### Power Supply:

5V 2.1A adapter

**Note:** Please use reliable 5V 2.1A adapter to connect with the USB cable (included).

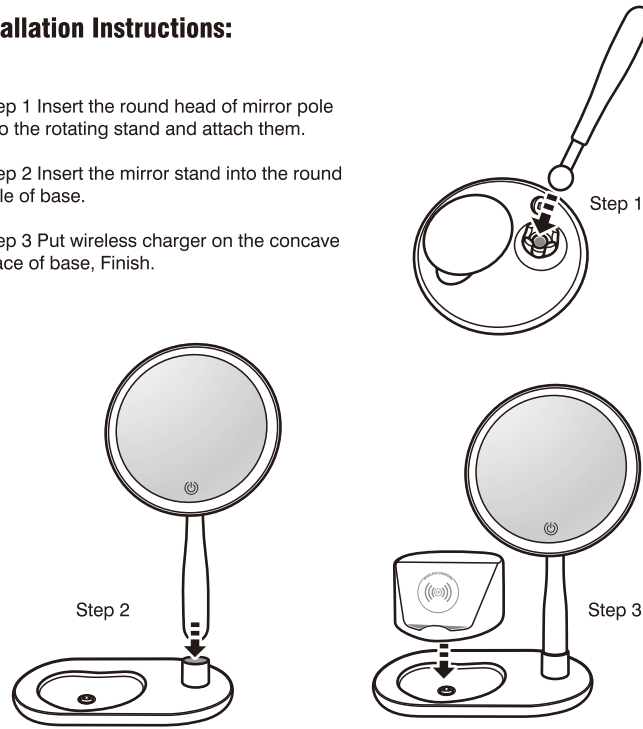
### Specifications:

Name: SMART SELFIE MIRROR  
 Input: 5VDC 2.1A  
 Wireless Output: 5W-10W  
 Package Dimensions: 15x10x3 inches  
 Item Weight: 850g

Type: DN-J020A  
 Total Power: 18W  
 Item Dimensions: 9x5.9x13 inches  
 Material: ABS  
 Included Components: Mirror, USB cable, User Guide

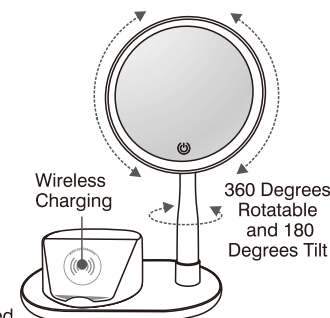
### Installation Instructions:

- Step 1 Insert the round head of mirror pole into the rotating stand and attach them.
- Step 2 Insert the mirror stand into the round hole of base.
- Step 3 Put wireless charger on the concave place of base, Finish.



### Use:

- 6.5-Inch glass mirror, made of HD coating, features a smooth 360-degree swivel design which you can rotate the mirror for any angle.
- Mirror Light Button: The mirror provides warm light, white light and natural light. Short press to change the color.
- Lamp Button: Short press the sensor to switch dim warm light, warm light and white light.
- Light button: Hold a long press on the touch button to adjust its brightness, and short press to pick up the light color you need.
- With power supply, set your Qi compatible smart phone on the wireless charging base, and charging will begin almost immediately. One to three seconds will be cost to access wireless charging protocol of the phone. Adjust the phone's position if the wireless charging doesn't work.



**Note:** The phone should be put within its power range. And the phone needs to be Qi compatible.

### Warranty:

- Warranty Period: One Year
- It is guaranteed within the period of 12 months from the date of original purchase.
- This warranty shall only be valid if accessories with defects in materials or workmanship cannot be properly functional. Defects arising as a result of the following are not covered by this Warranty: wear and tear caused by long-term use, accidental or negligent damage.
- The warranty does not apply to damage caused by taking apart the product (except the instructions of the User Guide).
- Keep the proof of certificate or receipt within warranty period.
- If any faults included in Equipment Failure List occur within 7 days after the sale, the product can be replaced or refunded for free after after-service checks.
- If any faults included in Equipment Failure List occur within the period of 8 to 15 days after the sale, the product can be replaced or repaired for free after after-service checks.
- If any faults included in Equipment Failure List occur within 12 months from the date of purchase, the product can be repaired for free after after-service checks.

### Cautions:

- Please carefully read this user guide before using the product, and keep this manual.
- Use the product in accordance with these instructions and put it in safe place. Avoid falling to cause product damage or personal injury.
- Don't put or use this mirror near any heat or water sources such as fountain, fishbowl, vase, electric heater, oil heater and radiator.
- Don't dismantle or reinstall the accessories, or transform the product, otherwise it may cause product failure or fire (except the instructions of this User Guide).

### Equipment Failure List:

Product	Type of Fault
DINA Wireless Charging Makeup Livestreaming Vanity Mirror	<ul style="list-style-type: none"> <li>• The lamp doesn't work.</li> <li>• Wireless/USB charging fails.</li> <li>• Button fails.</li> </ul>

- Note:** 1. The wireless charging is only accessible to Qi compatible phones.  
 2. Broken mirror is not covered by warranty because glass mirror belongs to fragile products.

### Warranty Registration Card

Name: SMART SELFIE MIRROR  
 Type: DN-J020A  
 Warranty Type: 7 Days Replacement  One-year Repair   
 Purchase Date: \_\_\_\_\_  
 Customer Name: \_\_\_\_\_  
 Phone Number: \_\_\_\_\_  
 Address: \_\_\_\_\_  
 Fault Description: \_\_\_\_\_

We really appreciate you as a customer.

### FCC WARNING

This device complies with part 15 of the FCC Rules. Operation is subject to the following two conditions: (1) this device may not cause harmful interference, and (2) this device must accept any interference received, including interference that may cause undesired operation.

Any changes or modifications not expressly approved by the party responsible for compliance could void the user's authority to operate the equipment.

NOTE: This equipment has been tested and found to comply with the limits for a Class B digital device, pursuant to Part 15 of the FCC Rules. These limits are designed to provide reasonable protection against harmful interference in a residential installation. This equipment generates, uses and can radiate radio frequency energy and, if not installed and used in accordance with the instructions, may cause harmful interference to radio communications. However, there is no guarantee that interference will not occur in a particular installation.

If this equipment does cause harmful interference to radio or television reception, which can be determined by turning the equipment off and on, the user is encouraged to try to correct the interference by one or more of the following measures:

- Reorient or relocate the receiving antenna.
- Increase the separation between the equipment and receiver.
- Connect the equipment into an outlet on a circuit different from that to which the receiver is connected.
- Consult the dealer or an experienced radio/TV technician for help.

To maintain compliance with FCC's RF Exposure guidelines, This equipment should be installed and operated with minimum distance between 20cm the radiator your body: Use only the supplied antenna.