



www.nobleaudio.com  
https://www.facebook.com/NobleAudio  
https://www.instagram.com/nobleaudio/  
https://twitter.com/noblebywizard

217-241325

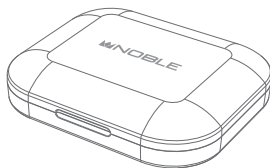


# KAMA

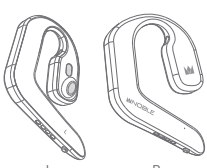
Open Wearable Stereo Earphone

## INSTRUCTION MANUAL

### Packing List



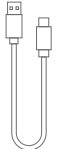
Charging Case x1



Earphones



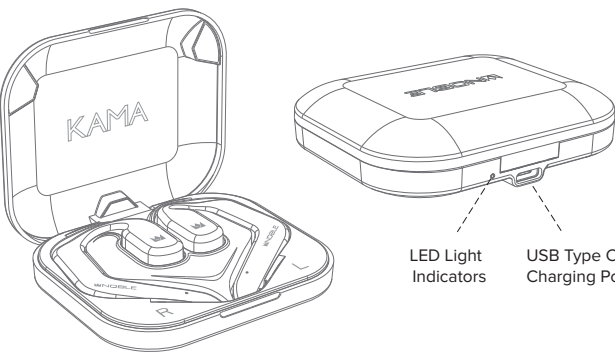
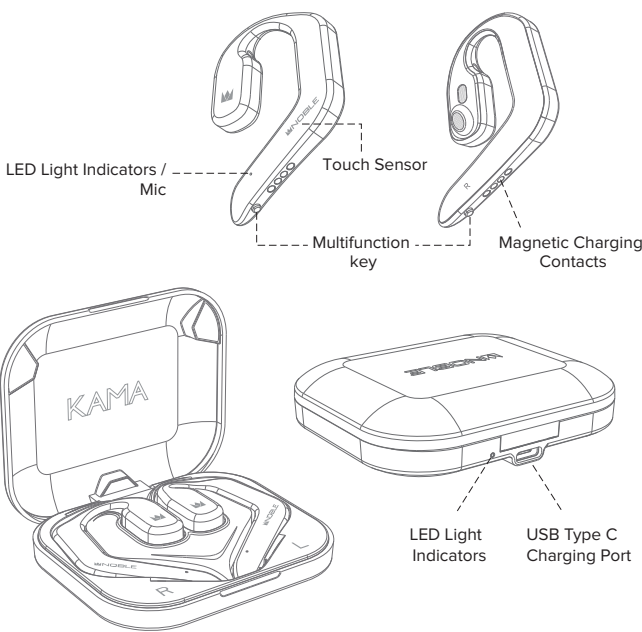
Instruction Manual x1



Charging Cable x1

01

### Overview

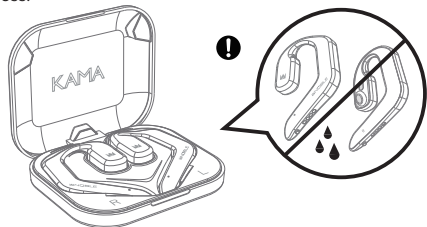


02

### Charging

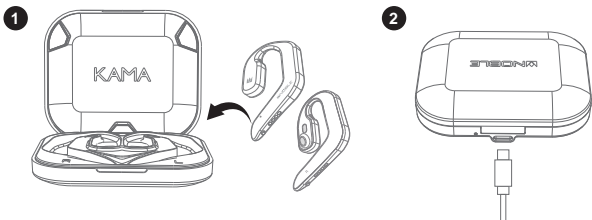
**Notes:**Please make sure the earphones and charging case are fully charged prior to first use.

The earphones and charging case need to be clean and dry before and during the charging process.



#### Charging Steps:

1. The earphones will power off automatically when placed back in the charging case and the charging lid is closed.
2. Connect the charging case with power source by inserting the USB Type C charging cable.

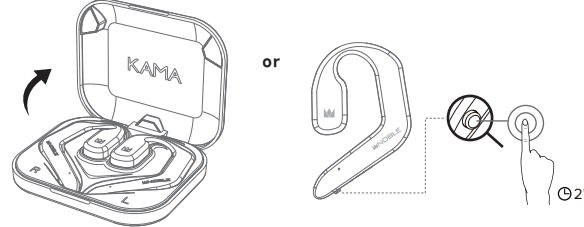


03

### Power On / Off

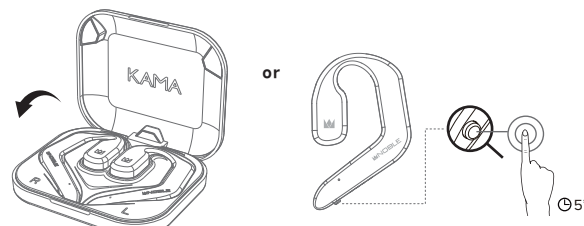
**Turn On:** The earphones will power on automatically when charging lid is opened.

\* To manually turn the earphones on, Press and hold the multifunction key on the headset for 2 seconds.



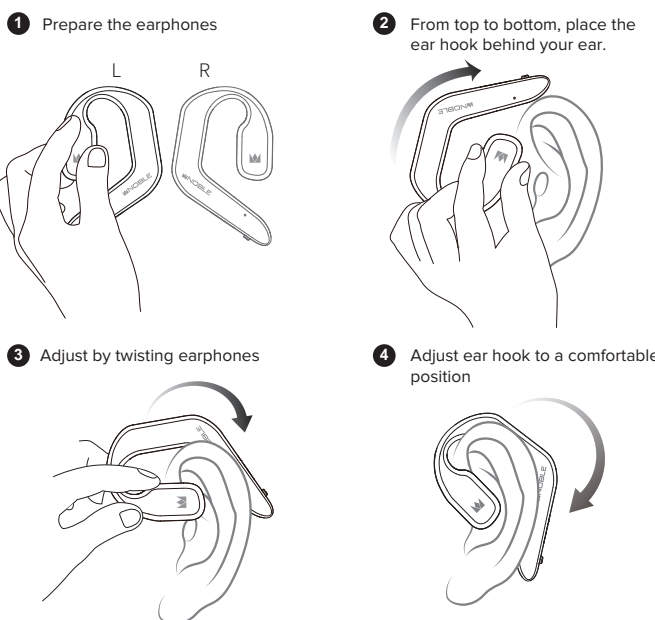
**Turn Off:** The earphones will power off automatically when put back in the charging case and the charging lid is closed.

\* To manually turn off the earphones, press and hold the touch sensor or multifunction key on either side for 5 seconds.



04

### Wear



05

### Pairing/Unpairing Procedure

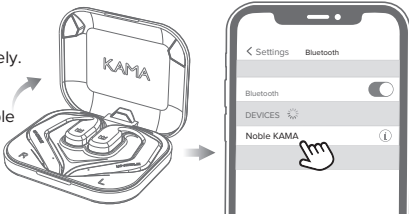
The Noble KAMA will need to be paired to your device before use. Once paired, they will connect automatically each time they are activated.

#### Pairing

1. Open the lid of the charging case.

The earphones will power on automatically and enter pairing mode, with orange and white indicator lights flashing alternately.

2. Enable Bluetooth on your smartphone and search for "Noble KAMA" in available Bluetooth devices. Once found, select "Noble KAMA" to initiate pairing. You will hear "connected", now the earphones are ready for use.



#### Pairing a new device

1. Open the lid of your charging case. The earphones will power on automatically and connect to your current device.
2. To unpair the earphones from your last connected smartphone by "disconnecting" or deleting "Noble KAMA" from your smartphone's Bluetooth device list.
3. Once disconnected, the earphones will automatically enter pairing mode, with orange and white indicator lights flashing alternately.
4. Enable Bluetooth on your new device, and search for "Noble KAMA" in the available Bluetooth devices. Once found, select "Noble KAMA" to initiate pairing. You will hear "connected", now the earphones are ready for use.

06

### Operation

▶	Play/Pause	Single Click touch sensor or Multifunction key (L/R)
⏮	Volume Up+	Triple Click touch sensor or Multifunction key (L)
⏭	Volume Down-	Double Click touch sensor or Multifunction key (L)
⏮	Previous Track	Double Click touch sensor or Multifunction key (R)
▶	Next Track	Triple Click touch sensor or Multifunction key (R)
📞	Answer Call/Hang Up	Single Click touch sensor or Multifunction key (L/R)
📞	Reject Call	Press the touch sensor or Multifunction key for 2 seconds (L/R)
🗣	Voice Assistant function-Siri / Google	Press the touch sensor or Multifunction key for 3 seconds (R)

07

### LED Indicator Lights

Usage Scenario	LED Indicator Status
Power On	White LED light flashes for one second
Power Off	Orange LED light flashes for one second
Pairing	Orange and White LED alternating flash
Pairing succeeds	White LED light flashes every 7 seconds
Playing music or on calling	LED light off
Earphones low battery	White LED light flashes twice every 8 seconds
When put earphones in the charger case	Orange LED light on
Earphones are fully charged in the charging case	LED light off
Case is charging	White LED light flashes
Case full charged	White LED light on
Case low battery	White LED light flashes rapidly

Single Pairing mode: Put one side back in the charging case and the other earphone will work independently.

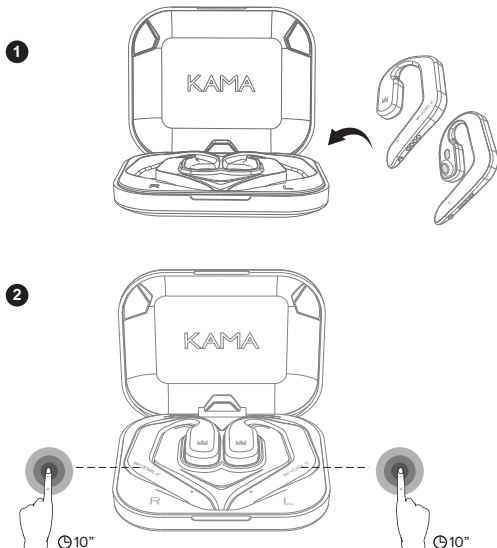
One side will continue working even when the other side is powered off.

Pairing after being taken out of range: The earphones will automatically pair to the smartphone within 3 minutes if they are close to the smartphone again after being taken out of range. If they are not brought within range within three minutes, the headphones will automatically power off.

08

### Reset

Place the earphones in the charging case and press both touch sensors for 10 seconds (until the white LED light comes on), and then double tap both touch sensors within 5 seconds.\*



09

### Specification

Product Model	Noble KAMA
Bluetooth Version	V 5.3
Bluetooth Profile	A2DP、AVRCP、HFP、HSP
Driver size	Φ 15mm×10mm 16Ω±15%
Frequency response	20Hz ~ 20KHz
Connection Distance	≥10m
Earphone Battery Capacity	80mAh
Charging Case Battery Capacity	400mAh
Play time	8.5H (50% volume)
Charging time	Earbuds: 1.5 hours; charger case: 2 hours
Charging Port	Type C
Power input	5V = 1A
Product Size	83*70*20mm

10

### Declarations and Warnings

Disconnect previous devices before pairing a new device.

#### WARNING!

Long-term exposure to high noise volumes may cause permanent hearing loss.

Do not use the Noble KAMA earphones in locations prohibiting the use of electronic equipment.

Consult your physician prior to using your Noble KAMA earphones if you have a pacemaker or other electrical medical devices.

This package contains small parts, which may pose a hazard to small children.

Do not disassemble the Noble KAMA as it contains lithium batteries, and disassembly could result in electric shock or fire or serious injury.

Any disassembly of the Noble KAMA, or attempt to replace or repair the Noble KAMA by an unauthorized person, will void the Noble KAMA warranty.

This product is not designed for use in water or wet environments. Keep product away from water and liquids.

Failure to do so will void any warranty and may cause permanent damage to the product.

11

### FCC Warning

This device complies with Part 15 of the FCC Rules. Operation is subject to the following two conditions:  
(1) This device may not cause harmful interference, and (2) this device must accept any interference received, including interference that may cause undesired operation.

**NOTE 1:** This equipment has been tested and found to comply with the limits for a Class B digital device, pursuant to part 15 of the FCC Rules. These limits are designed to provide reasonable protection against harmful interference in a residential installation. This equipment generates, uses and can radiate radio frequency energy and, if not installed and used in accordance with the instructions, may cause harmful interference to radio communications. However, there is no guarantee that interference will not occur in a particular installation. If this equipment does cause harmful interference to radio or television reception, which can be determined by turning the equipment off and on, the user is encouraged to try to correct the interference by one or more of the following measures:  
- Reorient or relocate the receiving antenna.  
- Increase the separation between the equipment and receiver.  
- Connect the equipment into an outlet on a circuit different from that to which the receiver is connected.  
- Consult the dealer or an experienced radio/TV technician for help.

**NOTE 2:** Any changes or modifications to this unit not expressly approved by the party responsible for compliance could void the user's authority to operate the equipment.

The device has been evaluated to meet general RF exposure requirement. The device can be used in portable exposure condition without restriction.

12