

尺寸：90\*175mm, 双面1C印刷，200G白卡纸，过哑膜

FRONT

90mm

NOBLE

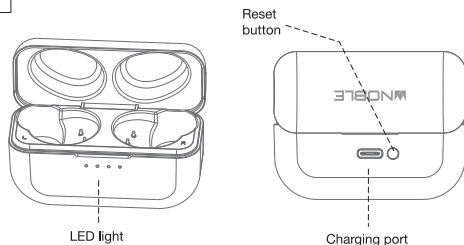
FoKus H-ANC

TRUE WIRELESS STEREO EARBUDS

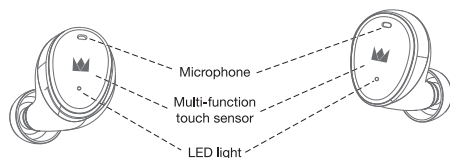
Quick Start Guide

Product Overview

Charging case



Earbuds



Accessories



FCC STATEMENT

This device complies with Part 15 of the FCC Rules. Operation is subject to the following two conditions:  
 (1) This device may not cause harmful interference, and  
 (2) This device must accept any interference received, including interference that may cause undesired operation.

Warning:

Changes or modifications not expressly approved by the party responsible for compliance could void the user's authority to operate the equipment.

NOTE:

This equipment has been tested and found to comply with the limits for a Class B digital device, pursuant to Part 15 of the FCC Rules. These limits are designed to provide reasonable protection against harmful interference in a residential installation. This equipment generates uses and can radiate radio frequency energy and, if not installed and used in accordance with the instructions, may cause harmful interference to radio communications. However, there is no guarantee that interference will not occur in a particular installation. If this equipment does cause harmful interference to radio or television reception, which can be determined by turning the equipment off and on, the user is encouraged to try to correct the interference by one or more of the following measures:

Reorient or relocate the receiving antenna.

Increase the separation between the equipment and receiver.

Connect the equipment into an outlet on a circuit different from that to which the receiver is connected.

Consult the dealer or an experienced radio/TV technician for help.

Please refer to the online manual on the web page for charging and installation instructions.

Click here for detailed product information, online manuals, apps, and support.

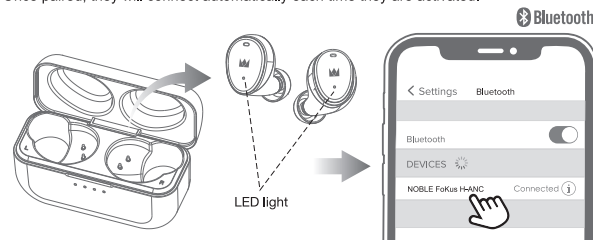
www.nobleaudio.com  
 FCC ID: 2AT8X-FOKUSH-ANC



BACK

How to pair

The Noble FoKus H-ANC will need to be paired to your device before use. Once paired, they will connect automatically each time they are activated.

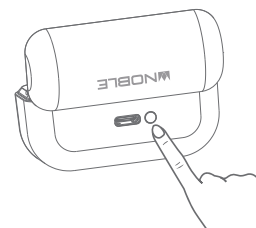


Open the lid of the charging case, remove the earbuds from the charging case. The earbuds will power on automatically and enter pairing mode, with blue and white indicator lights flashing alternately.

Enable Bluetooth on your smartphone and search for "NOBLE FoKus H-ANC" in available Bluetooth devices. Once found, select "NOBLE FoKus H-ANC" to initiate pairing. You will hear voice prompt "PAIRING COMPLETE", now the earphones are ready to use.

Reset

If pairing does not work properly or the operation is unstable, please try to reset the earbuds. To do so, please open the lid, press and hold the reset button of the charging case for 10 seconds when the earbuds are on the case, until charging case white indicator LED1 and LED3 flash.



Check the battery level of the case Press **ONCE**

Displays the remaining battery life of the case.

Pairing Long press for **3 sec.**

Pair both earphones with the device while they are in the case, and case lid is open, case LED3 flashes 5s.

Full reset Long press for **10 sec.**

Press and hold for 10 seconds until case LED1 and LED3 flash 5s synchronously to reset the setting.

Hear-through & ANC function In standby mode or when playing music

ANC OFF

First time to use the earbud, default state is ANC OFF

Hear-through function Long press LEFT for 3 sec

Press and hold the left earbud touch sensor for 3 seconds with voice prompt "AMBIENT MODE", it will activate the external sound capturing function.

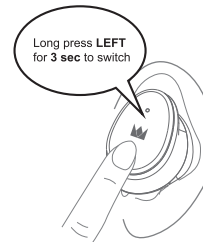
Wind noise reduction Long press LEFT for 3 sec

Press and hold the left earbud touch sensor for 3 seconds with voice prompt "Wind noise reduction", it will activate the active noise cancellation for wind noise environment.

Active noise cancellation(ANC) Long press LEFT for 3 sec

Press and hold the left earbud touch sensor for 3 seconds with voice prompt "ANC ON", it will activate the active noise cancellation.

In a word, here is the loop for "AMBIENT MODE", "Wind noise reduction", "ANC ON", "ANC OFF" by long pressing LEFT earbud for 3 seconds



For information on how to use the touch sensor and how to read the LED display Please refer to the online manual on the web page.