

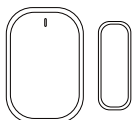
48.6mm

48.6mm

moes

tuya

## Instruction Manual Smart Door/Window Sensor Zigbee 3.0



English

WORKS WITH  
Google AssistantWORKS WITH  
alexa

ZSS-S01-GWM-C-MS-CG28

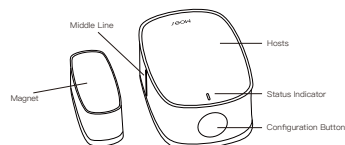
- Bitte scannen Sie den QR-Code, um das deutsche Handbuch, das Installationsvideo und die Funktionseinführung zu erhalten
- Escanee el código QR para obtener el manual en español, el video de instalación y la introducción de la función
- Veuillez scanner le code QR pour obtenir le manuel en français, la vidéo d'installation et l'introduction des fonctions
- Отсканируйте QR-код, чтобы получить руководство на русском языке, видео по установке и описание функций
- Scansionare il codice QR per ottenere il manuale in italiano, il video di installazione e la guida alle funzionalità. Video di installazione e funzionalità
- Leia o código QR para obter o manual em português, o vídeo de instalação e a introdução das funções
- Zeskanuj kod QR, aby uzyskać instrukcję, filmy instalacyjne i funkcje
- من فضلك قم بمسح رمز الاستجابة السريعة (QR-code) للحصول على دليل المستخدم باللغة العربية وفديو التثبيت ووصف الوظائف



請掃描二維碼獲取中文的說明書、安裝視頻及功能介紹

## Product Introduction

Smart Door/Window Sensor senses the opening and closing status of doors and windows by detecting the proximity and separation of magnets. Alarm information can be uploaded through Zigbee protocol in wireless IOT mode. Records can be uploaded to realise the security detection of the monitored objects. This product is suitable for home residence, building villa, factory, shopping mall, office building and so on.



\*Make sure the side of the magnet with marked line is aligned to the side of the hosts marked with the Middle line.

## Packing List

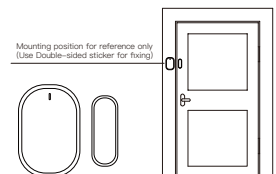
- Door/Window Sensor \*1
- Battery \*1
- Product user manual \*1
- Double-sided sticker \*2

## Technical Parameters

Model	ZSS-S01-GWM-C
Product Name	Smart Door/Window Sensor
Wireless Connection	Zigbee
Support Low Battery Alarm	Yes
Operating Temperature	-10°C ~ +50°C
Alarm Trigger Distance	20±5mm
Battery Specifications	CR2032 (replaceable)
Product Size	Host 40*26*13 mm Magnet 26*9.5*11mm

## Installation Instructions

The product can be applied to the door, window and other scenes, please install the host and the magnet separately on the fixed door frame or window, as shown in the following figure.



- \* Do not install outdoors, on a weak foundation, or in a location subject to rain.
- \* Do not place magnetic metals or other objects to avoid interfering with the sensor's work.

## Preparation for Use

1. Download MOES App on App store or scan the QR code



MOES App is upgraded as much more compatibility than Tuya Smart/Smart Life App, functional well for scene controlled by Siri, widget and scene recommendations as the fully new customized service.

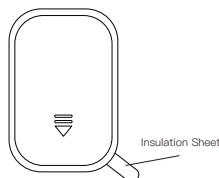
(Note: Tuya Smart/Smart Life App still works, but MOES App is highly recommended)

## 2. Registration or Log in

- \* Download "MOES" Application.
- \* Enter the Register/Login interface, tap "Register" to create an account by entering your phone number to get verification code and "Set password." Choose "Log in" if you already have a MOES account.

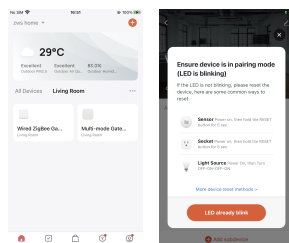
## Add device

1. Slide the rear cover towards the direction of the arrow, remove the rear cover, then remove the insulation sheet and finally reinstall the rear cover.

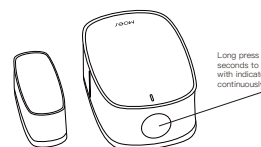


Remove insulation sheet to power on the sensor.

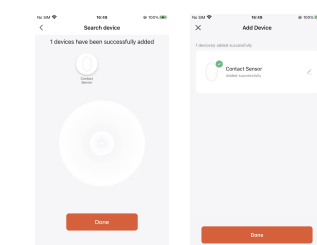
2. Open the MOES APP, make sure the ZigBee gateway/multimode gateway is connected to the APP, enter the gateway and click "Add New Device".



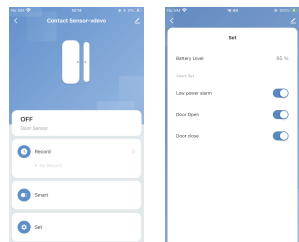
3. Enter configuration mode  
(1) Press and hold the "button" for more than 6 seconds until the white indicator light flashes quickly, and the sensor enters pairing mode. (Note: When configuring the network, please make the device as close as possible to the gateway.)  
(2) If the network configuration fails, press and hold the device button again until the white light flashes quickly, and repeat the above operations.



4. Wait for 10-120 seconds. After adding the device successfully, you can edit the device name.



5. Now you can set "smart scene linkage" according to your needs and enjoy your smart home life.



## FCC statement

This device complies with part 15 of the FCC Rules. Operation is subject to the following two conditions:

- (1) This device may not cause harmful interference, and
- (2) This device must accept any interference received, including interference that may cause undesired operation.

Any changes or modifications not expressly approved by the party responsible for compliance could void the user's authority to operate the equipment.

This equipment has been tested and found to comply with the limits for a Class B digital device, pursuant to part 15 of the FCC Rules. These limits are designed to provide reasonable protection against harmful interference in a residential installation. This equipment generates, uses and can radiate radio frequency energy and, if not installed and used in accordance with the instructions, may cause harmful interference to radio communications. However, there is no guarantee that interference will not occur in a particular installation. If this equipment does cause harmful interference to radio or television reception, which can be determined by turning the equipment off and on, the user is encouraged to try to correct the interference by one or more of the following measures:

- Reorient or relocate the receiving antenna.
- Increase the separation between the equipment and receiver.
- Connect the equipment into an outlet on a circuit different from that to which the receiver is connected.
- Consult the dealer or an experienced radio/TV technician for help.

## FCC Radiation Exposure Statement

This equipment complies with FCC radiation exposure limits set forth for an uncontrolled environment. This equipment should be installed and operated with minimum distance 20cm between the radiator & your body.

## Restriction of elements or element identification tables

Part Name	Toxic and hazardous substances or elements				
	Lead (Pb)	Mercury (Hg)	Chromium (Cr)	Hexavalent chromium (Cr(VI))	Other elements (Pb, Cd, Ni, etc.)
LED	○	○	○	○	○
Circuit Board	×	○	○	○	○
Housings and other components	×	○	○	○	○

This form has been prepared in accordance with the provisions of SJ/T 11364.

○ indicates that the content of the toxic and hazardous substances in all homogeneous materials of the component is below the limits specified in the GB/T26572 standard limit requirements below.

× indicates that the content of the toxic and hazardous substance in at least one homogeneous material of the component exceeds the limit requirements specified in GB/T26572 standard.

## SERVICE

Thank you for your trust and support to our products, we will provide you with a two-year worry-free after-sales service (freight is not included), please do not alter this warranty service card, to safeguard your legitimate rights and interests. If you need service or have any questions, please consult the distributor or contact us.

Product quality problems occur within 24 months from the date of receipt, please prepare the product and the packaging, applying for after-sales maintenance in the site or store where you purchase; if the product is damaged due to personal reasons, a certain amount of maintenance fee shall be charged for repair.

We have the right to refuse to provide warranty service if:

1. Products with damaged appearance, missing LOGO or beyond the service term
2. Products that are disassembled, injured, privately repaired, modified or have missing parts
3. The circuit is burned or the data cable or power interface is damaged
4. Products damaged by foreign matter intrusion (including but not limited to various forms of fluid, sand, dust, soot, etc.)

## RECYCLING INFORMATION

All products marked with the symbol for separate collection of waste electrical and electronic equipment (WEEE Directive 2012/19 / EU) must be disposed of separately from unsorted municipal waste. To protect your health and the environment, this equipment must be disposed of at designated collection points for electrical and electronic equipment designated by the government or local authorities. Correct disposal and recycling will help prevent potential negative consequences for the environment and human health. To find out where these collection points are and how they work, contact the installer or your local authority.



## WARRANTY CARD

### Product Information

Product Name \_\_\_\_\_  
Product Type \_\_\_\_\_  
Purchase Date \_\_\_\_\_  
Warranty Period \_\_\_\_\_  
Dealer Information \_\_\_\_\_  
Customer's Name \_\_\_\_\_  
Customer Phone \_\_\_\_\_  
Customer Address \_\_\_\_\_

### Maintenance Records

Failure date	Cause Of Issue	Fault Content	Principal

Thank you for your support and purchase at we Moes, we are always here for your complete satisfaction, just feel free to share your great shopping experience with us.



If you have any other need, please do not hesitate to contact us first, we will try to meet your demand.

## FOLLOW US



AMZLAB GmbH  
Laubenhof 23, 45326 Essen

EVATOST CONSULTING LTD  
Address: Suite 11, First Floor, May Road  
Business Centre, Tafts Well, Cardiff,  
Wales, CF15 7QR  
Tel: +442921680945  
Email: contact@evatostmaster.com

WENZHOU NOVA NEW ENERGY CO.,LTD  
Address: Power Science and Technology  
Innovation Center, NO.238, Wei 11 Road,  
Yueqing Economic Development Zone,  
Yueqing, Zhejiang, China  
Tel: +86-577-57186815  
Email: service@moeshouse.com  
Made in China

CB03