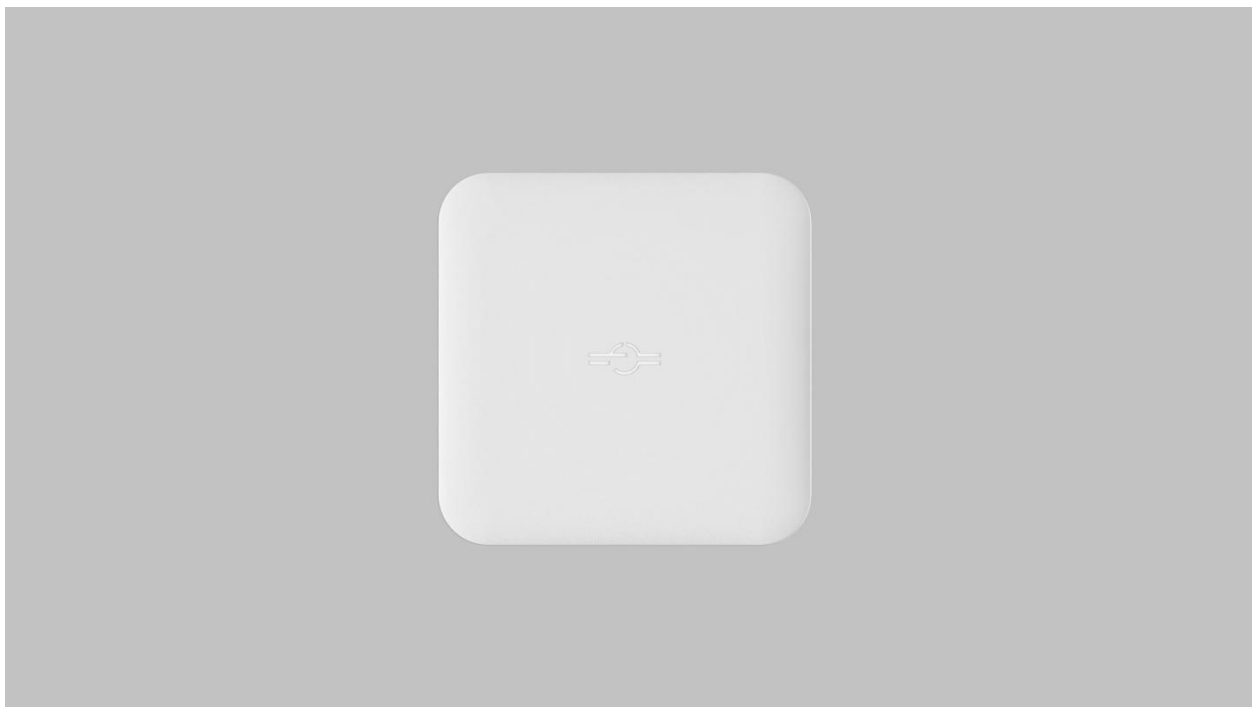


Geavio hub Instructions for use

2019 /7/10

Product overview

Gravio hub is a linux-based smart home gateway system. It has built-in zigbee3.0 chip, which can be compatible with the zigbee sensor on the market to form a smart home. It can exchange and send commands in parallel with the wireless sensor in hex code based on the serial protocol. At the same time, WiFi and Bluetooth have also created conditions for communication with other devices.



Front view

The Gravio hub is designed to be very compact, with a full-featured USB type-c interface and a button. This interface supports the pd power protocol, dp video protocol, and usb3.1.



After plugging in the pd power supply, it is ready to use.

At the same time, the Gravio hub also supports the use of linked displays. You can directly plug in the dual-headed full protocol USB type-c cable on the display that supports the USB type-c full protocol interface to light up the screen, or you can use the extension. The dock lights up the display and enters the UBUNTU system that comes with the body.



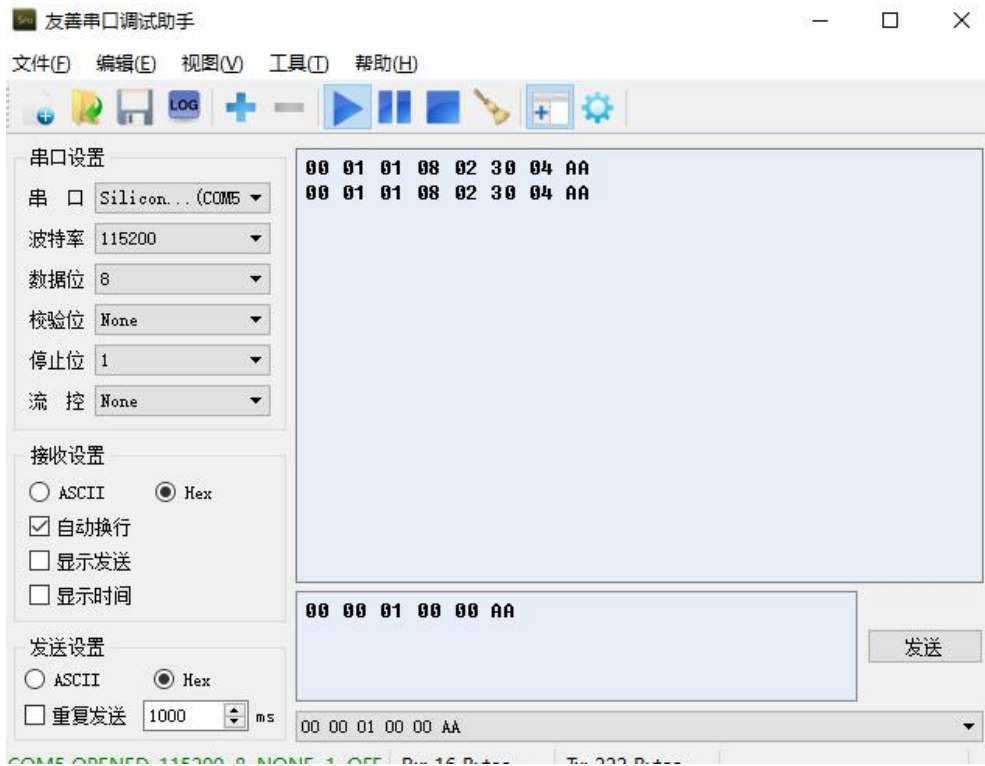
Insert the type-c header of the dock into the Grvaio hub. At the same time, the power is connected to the dock, and the dock is connected to the display in hdmi mode.

Instructions for use

Instructions for use

First open the serial debugging assistant, such as sscom, set the baud rate to 115200, open the serial port after 8N1. Send the command in hex:读取版本:

```
>> send : 00 00 01 00 00 AA  
>>receive : 00 01 01 08 02 00 03 AA
```



如图所示

Scan to build a zigbee network

```
>> send : 00 00 03 00 00 AA >> receive : 00 01 03 08 01 00 AA
```

Read current network information

```
>> send : 00 00 04 00 00 AA
>> receive : 00 01 04 08 0E 36 3F 32 FE FF 9F FD 90 01 01 C0 76 0F 13 AA
```

Open to allow devices to access the network

```
>> send : 00 00 10 00 01 FF AA >> receive : 00 01 10 08 01 00 AA
```

6

Sensor support:

Door and Window Sensor



```
near >> 00 1C 01 18 10 F9 68 04 02 00 8D 15 00 01 06 00 01 00 00 10 00 AA
```

```
Far away>> 00 1D 01 18 10 F9 68 04 02 00 8D 15 00 01 06 00 01 00 00 10 01 AA
```

Wireless Mini Switch

7



```
>>press : 00 38 01 18 11 09 67 B0 02 00 8D 15 00 01 12 00 01 55 00 →21 01 00 AA
```

```
>> long press : 00 39 01 18 11 09 67 B0 02 00 8D 15 00 01 12 00 01 55 00 21 10 →00 AA
```

```
>> Long press release : 00 3A 01 18 11 09 67 B0 02 00 8D 15 00 01 12 00 01 55 00 21 11 →00 AA
```

Temperature and Humidity Sensor

:



This temperature and humidity sensor supports reporting temperature values, relative humidity, and atmospheric pressure, so there are three types of reported data:

```
>> send : 00 40 01 18 11 6F FA 3C 02 00 8D 15 00 01 02 04 01 00 00 29 BD 0A AA >> send : 00 41
01 18 11 6F FA 3C 02 00 8D 15 00 01 05 04 01 00 00 21 02 22 AA >> send: 00 42 01 18 1A 6F FA
3C 02 00 8D 15 00 01 03 04 03 00 00 29 F2 03 14
```

```
→00 28 FF 10 00 29 7D 27 AA
```

Temperature and Humidity Sensor

(model: WSDCGQ01LM)



```
>> send : 00 5A 01 18 11 06 AF 39 02 00 8D 15 00 01 02 04 01 00 00 29 B3 0A AA
```

```
>> send : 00 5B 01 18 11 06 AF 39 02 00 8D 15 00 01 05 04 01 00 00 21 3C 21 AA
```

Door and Window Sensor (model: MCGQ11LM)



```
>> near send : 00 33 01 18 10 F9 68 04 02 00 8D 15 00 01 06 00 01 00 00 10 00 AA
```

```
>> far away : 00 34 01 18 10 F9 68 04 02 00 8D 15 00 01 06 00 01 00 00 10 01 AA
```

static post:



There are three types of data reported by the static post, as follows:

```
>> send data : 00 7A 01 18 15 FB 3B B2 02 00 8D 15 00 01 01 01 01 08 05 25 8A FF →1A 04 F9 00  
AA
```

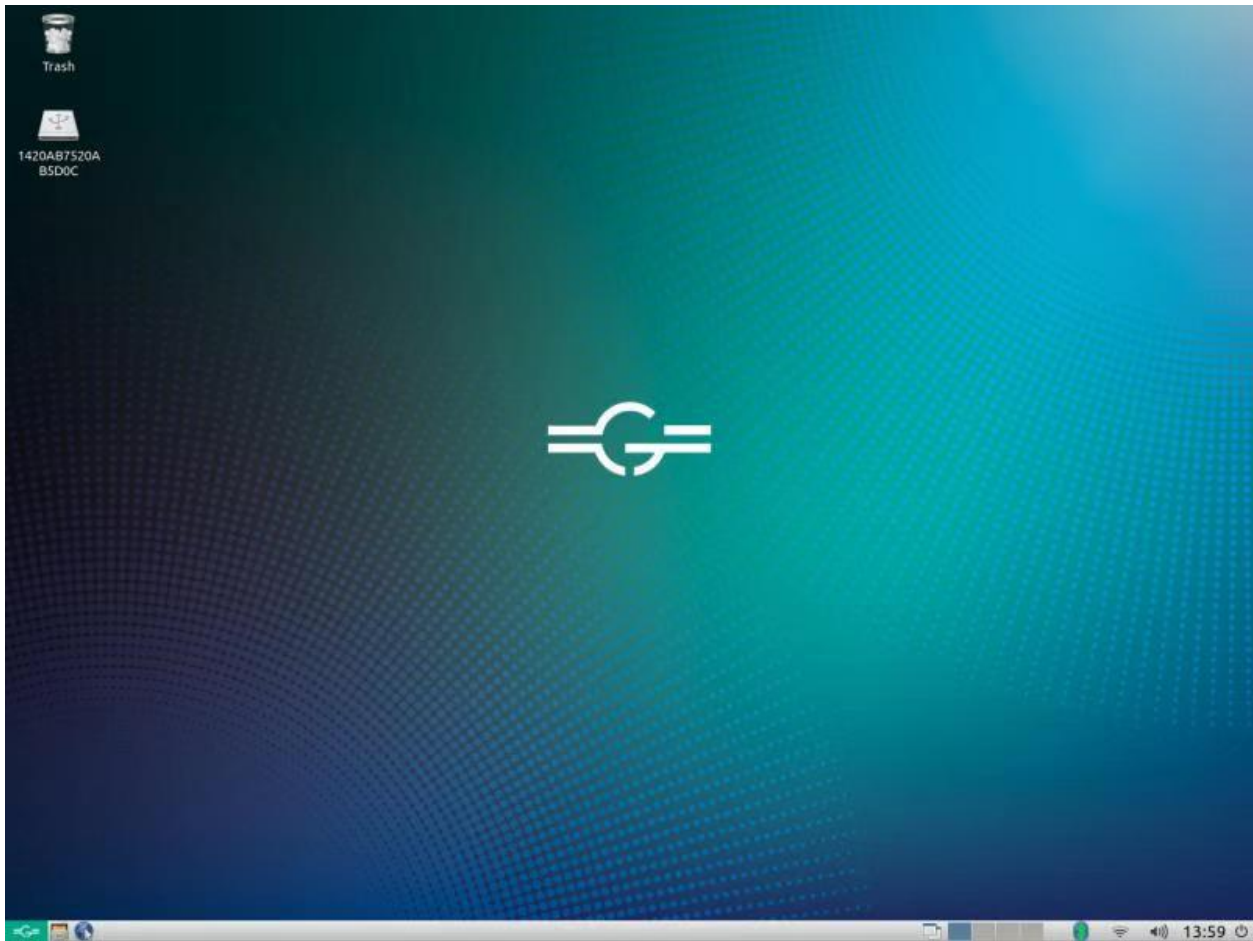
```
>> send data : 00 7C 01 18 16 FB 3B B2 02 00 8D 15 00 01 01 01 02 55 00 21 02 00 →03 05 21 06  
00 AA
```

```
>> send data : 00 7E 01 18 11 FB 3B B2 02 00 8D 15 00 01 01 01 01 55 00 21 01 00 →AA
```

1.2 WiFi instructions

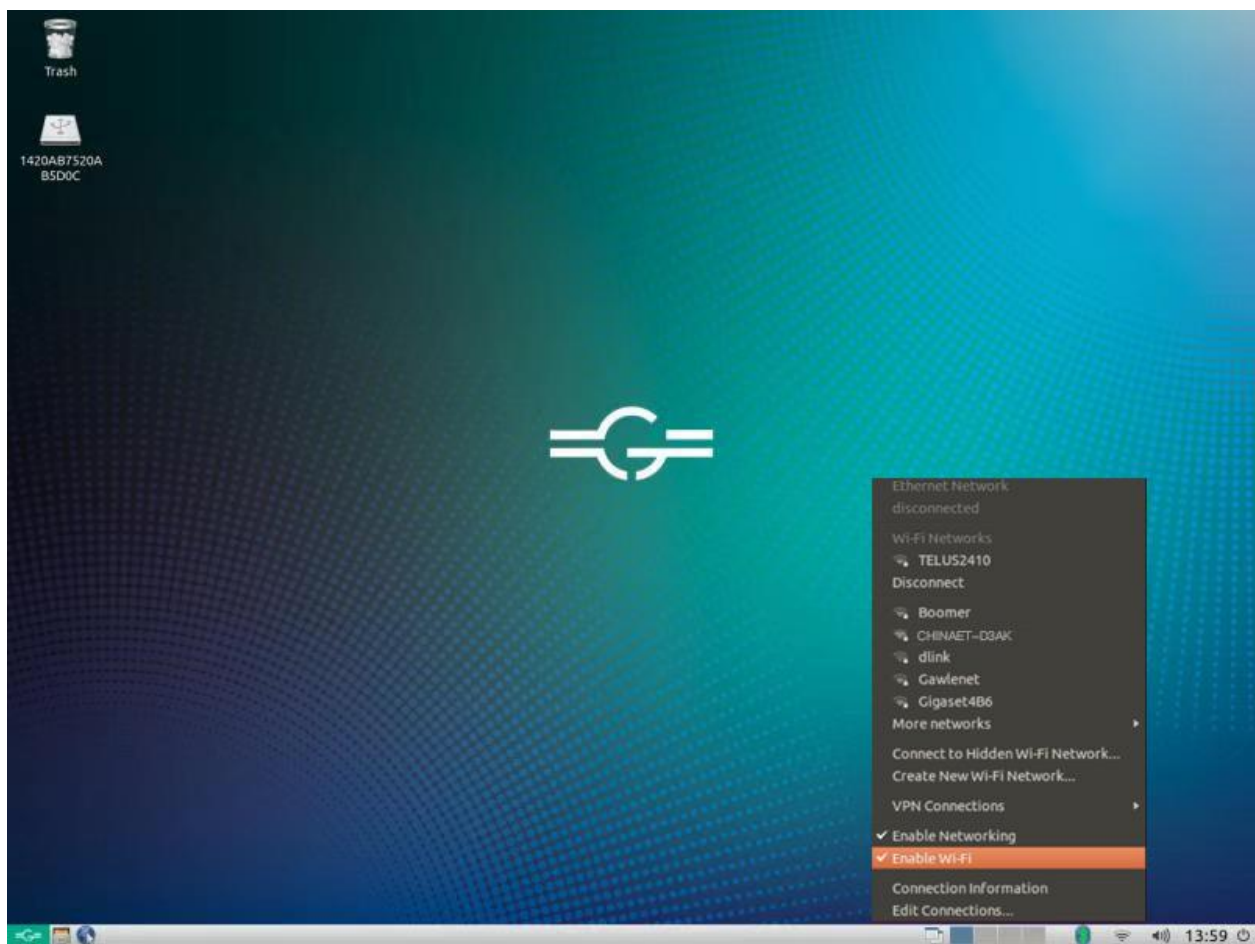
1.2.1

WiFi is one of the important network communication functions of this machine. The link method is as follows. After booting into the system, as shown below:



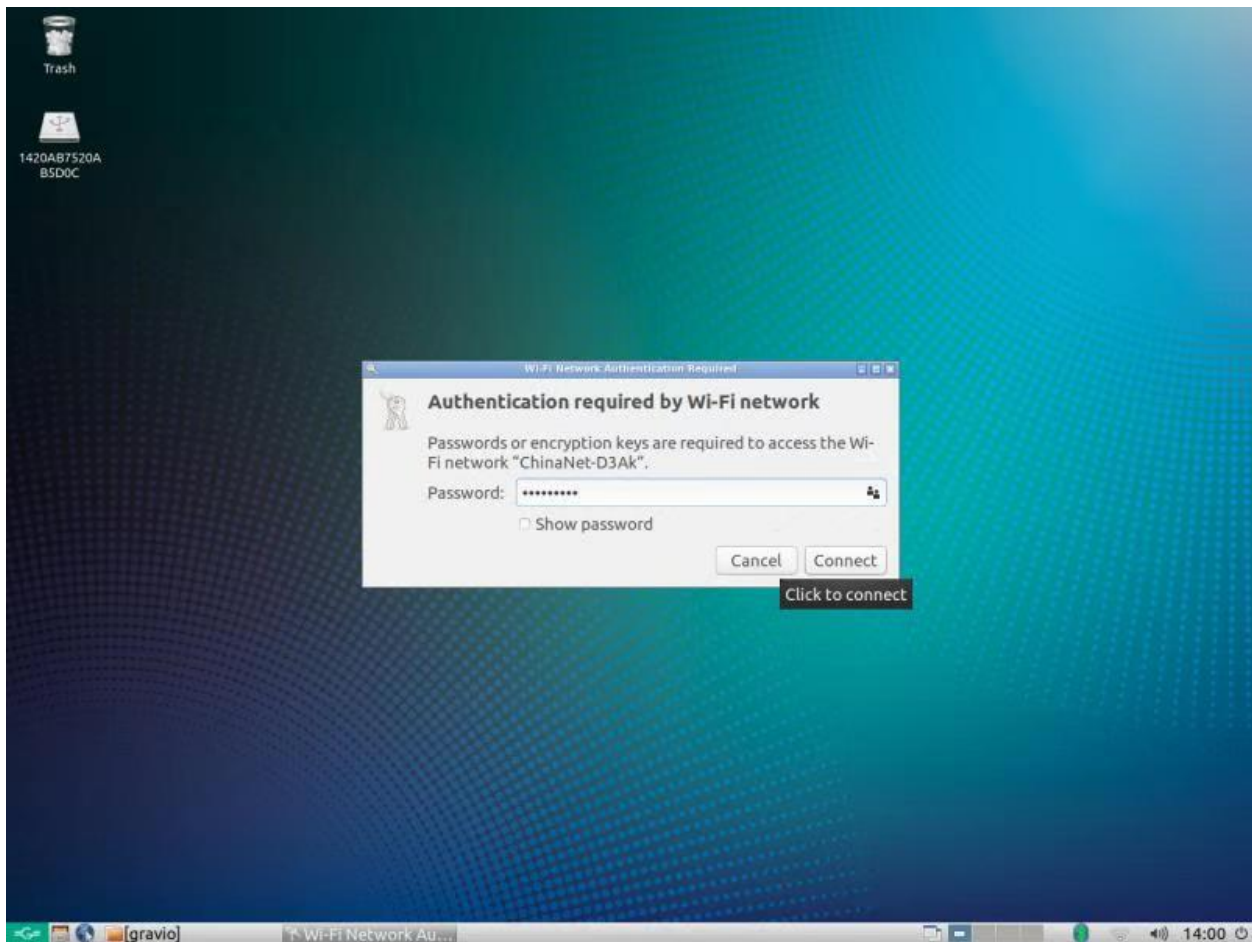
1. 2. 2

Select the WiFi name you want to link to



1. 2. 3

connection succeeded

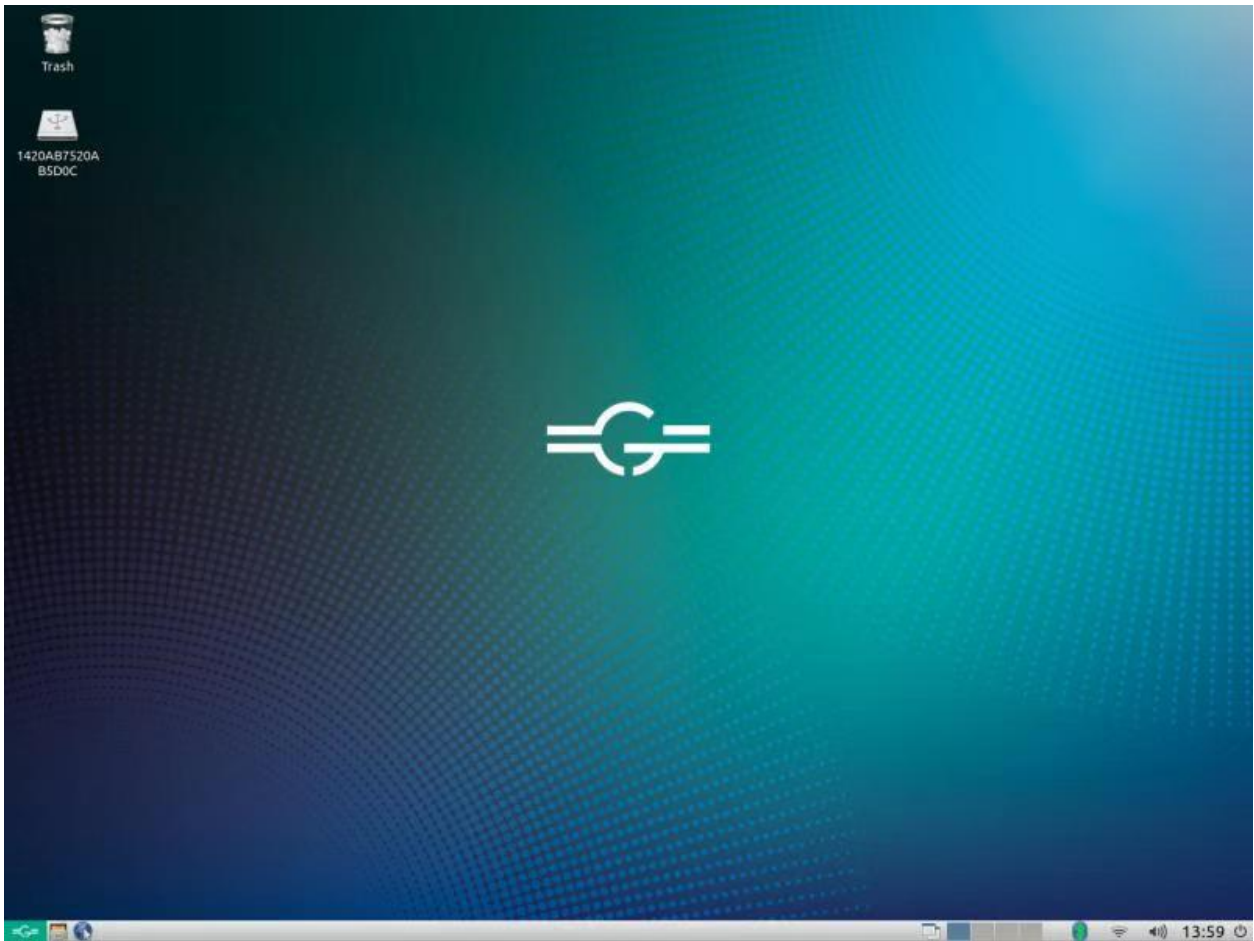


1.3 Bluetooth Instructions

15

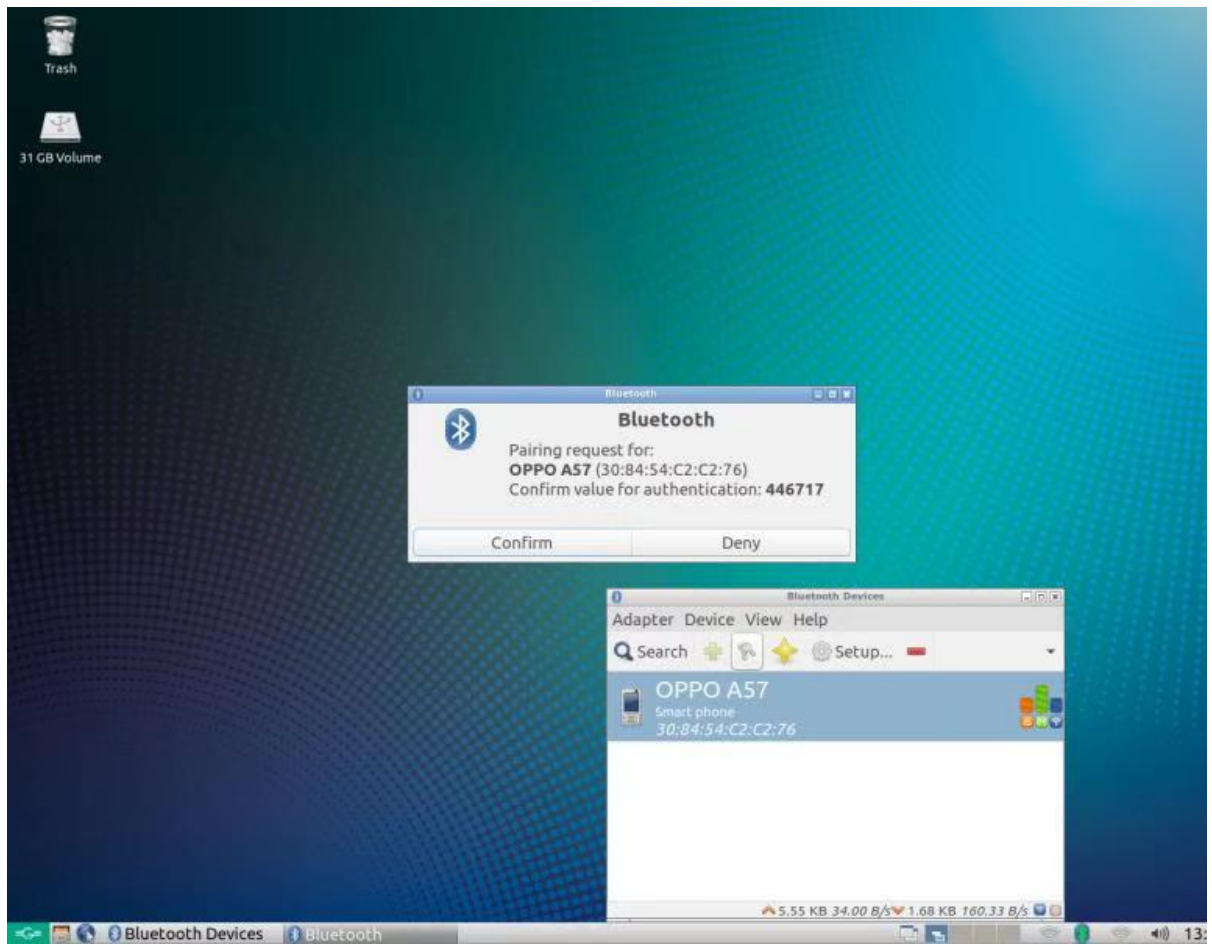
Bluetooth can be linked to other Bluetooth devices in the vicinity of the unit as one of the means of data exchange and transmission. The steps are as follows:

1. Boot into the system

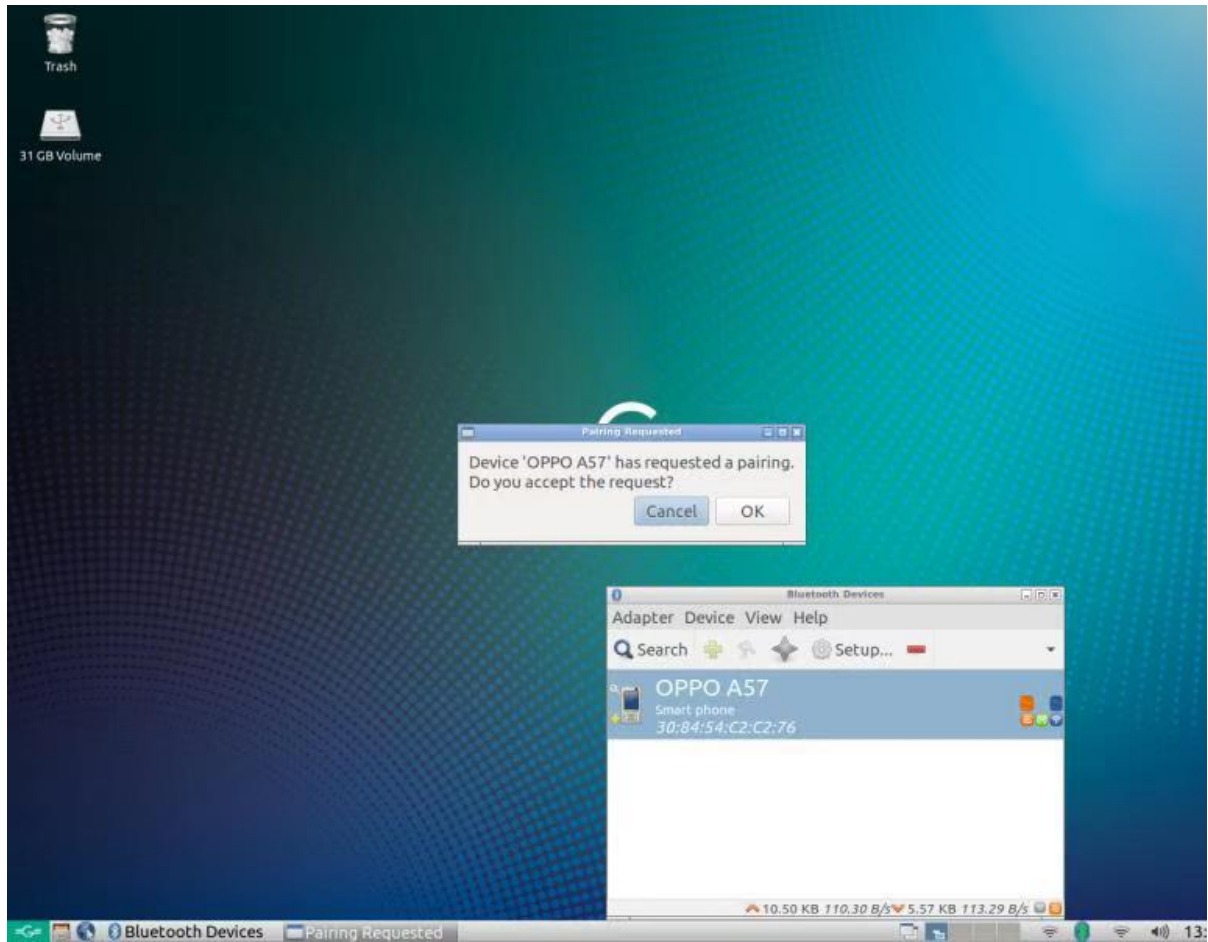


1.2 Click on the Bluetooth icon in the lower right corner. After searching, the Bluetooth device will appear.

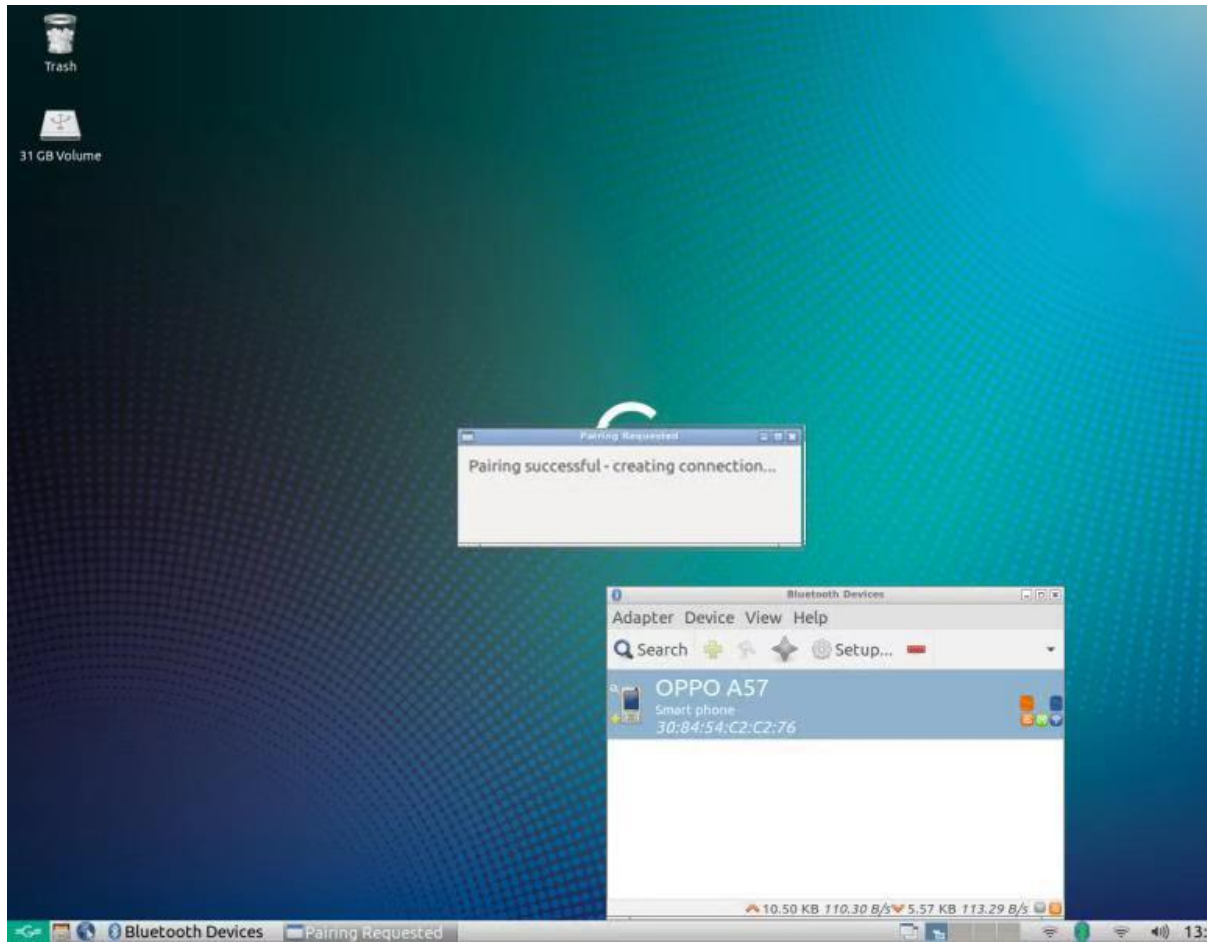
1.3 Select the Bluetooth device that needs to be matched, both devices will have a confirmation message, click to confirm



1.4 click OK



1.5 Pairing success



FCC Warning Statement

Changes or modifications not expressly approved by the party responsible for compliance could void the user's authority to operate the equipment. This equipment has been tested and found to comply with the limits for a Class B digital device, pursuant to Part 15 of the FCC Rules. These limits are designed to provide reasonable protection against harmful interference in a residential installation. This equipment generates uses and can radiate radio frequency energy and, if not installed and used in accordance with the instructions, may cause harmful interference to radio communications. However, there is no guarantee that interference will not occur in a particular installation. If this equipment does cause harmful interference to radio or television reception, which can be determined by turning the equipment off and on, the user is encouraged to try to correct the interference by one or more of the following measures:

- - Reorient or relocate the receiving antenna.
- - Increase the separation between the equipment and receiver.
- - Connect the equipment into an outlet on a circuit different from that to which the receiver is connected.
- - Consult the dealer or an experienced radio/TV technician for help.

FCC Radiation Exposure Statement

The antennas used for this transmitter must be installed to provide a separation distance of at least 20 cm from all persons and must not be co - located for operating in conjunction with any other antenna or transmitter.