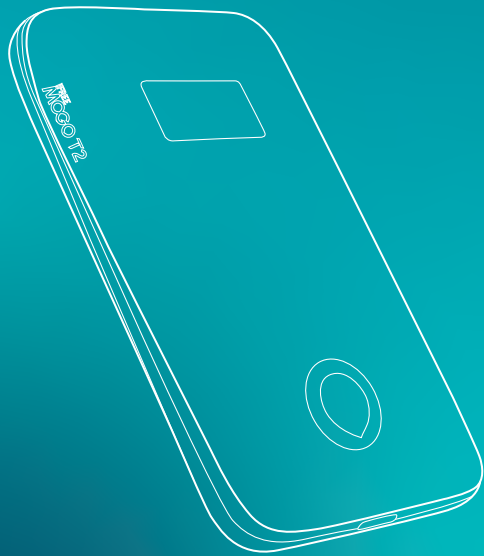


# MOGO T2 MANUAL



No Limits No Boundaries

## Statement of Conditions

In the interest of improving internal design, operational function, and/or reliability, iFREE GROUP reserves the right to make changes to the products described in this document without notice. iFREE GROUP does not assume any liability that may occur due to the use or application of the product(s) or circuit layout(s) described herein.

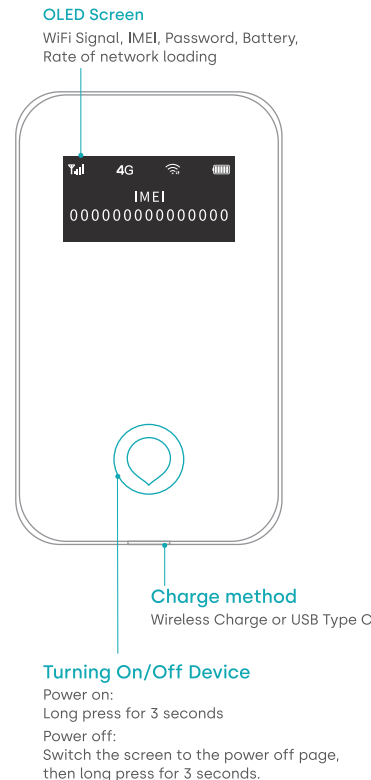
## Introduction

Thank you for purchasing the MOGO T2, 4G Wireless Data & GPS Tracking Device. This device brings you a high speed wireless network connection and global position.

MOGO T2 is a well-designed product to provide you and your family high-speed wireless access and give them the peace of mind.

\* Accessible service may be limited by contract conditions.

## MOGO T2 Structure Diagram



## Steps to use MOGO T2

### Binding the MOGO T2

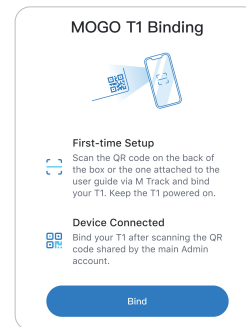
Before first use, please scan to download the M Track.



[www.ifree.ly/mtrack](http://www.ifree.ly/mtrack)  
Scan to download M Track



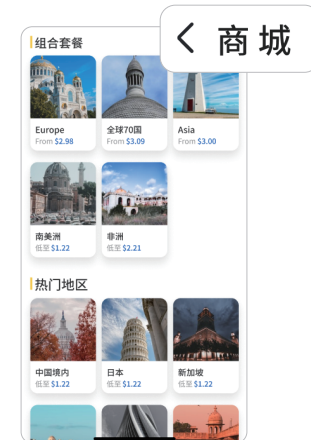
1. Register as a T2 user or Log in with your FREE account.
2. Scan the QR Code either on the back of the box or user manual to bind T2.



\* Turn Bluetooth on to enable the connection between your smartphone and T2.

### Purchaes Data Package

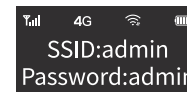
After binding your device, purchase the data plan via M Track > Store



### Share WiFi

1. Turn on the T2 to connect to the network.
  2. Check the WiFi name and enter the password.
- Or scan the WiFi sharing QR code by the T2 admin.

\* Please ensure you have data purchased the package for your T2.



iFREE GROUP®

Track belongings

After attaching your T2 to the preferred item, it can help to find your belongings by real-time positioning and two-way separation alert with multiple location technologies.

Activate SOS alarm

Long press for 3 seconds (not the power off page) until the screen display the 'SOS', and the M Track will pop up the alarm.



Specifications

|                        |  |  |
|------------------------|--|--|
| Product Name           | 4G Wireless Data & GPS Tracking Device     |  |
| Model                  | T2   |  |
| Network Specifications | Frequency Bands                            | FDD-LTE: B1/B2/B3/B4/B5/B7 /B8/B20/B12/B13<br>TDD-LTE: B38/B40/B41<br>UMTS: B1/B2/B4/B5/B8 |
|                        | Data Rate                                  | Download: 150Mbps<br>Upload: 50Mbps  |
|                        | SIM Card                                   | VSIM   |
| WiFi                   | WiFi Mode                                  | 802.11b/g/n  |
|                        | Data Rate                                  | 300Mbps  |
| Multi-Positioning      | GPS/GLONASS/WiFi/LBS/G-sensor              |  |
| Bluetooth              | Two-way alarm (up to Bluetooth5.0)         |  |
| Beep Alarm             | Support                                    |  |
| Charger                | Type-C/Magnetic charging/Wireless charging |  |
| Input                  | 5V 1A                                      |  |
| Dimensions             | 101.3mm*60.2mm*13.4mm                      |  |
| Voltage                | 3.8V                                       |  |
| Battery Capacity       | 2000mAh                                    |  |
| Standby Time           | 200 hours                                  |  |
| Operating Temperature  | 0°C ~ +45°C                                |  |
| Storage Temperature    | -20°C ~ +70°C                              |  |
| Manufacturer           | iFREE GROUP (HK) LIMITED                   |  |

Warranty

If within 7 days of purchase this product or any part thereof is proven to be defective by reason of faulty workmanship or defect in materials, we will repair or replace the said product free of charge.

Battery Warranty: 6 months  
MOGO S2 Warranty: 12 months

Fair Usage Policy

Under the Fair Usage Policy, to avoid excessive downloads or uploads, service providers have the right to restrict the data access speed without prior notice.

iFREE reserves the right to limit returns or exchanges at any time, for whatever reason. Any questions please contact our customer service center at [www.ifree.ly/support](http://www.ifree.ly/support).

CE Warning:

This device was tested for typical body-worn operations. To comply with RF exposure requirements, a minimum separation distance of 5mm must be maintained between the user's body and the device, including the antenna. Third-party belt-clips, holsters, and similar accessories used by this device should not contain any metallic components. Body-worn accessories that do not meet these requirements may not comply with RF exposure requirements and should be avoided. Use only the supplied or an approved antenna. This device in compliance with the essential requirements and other relevant provisions of Directive 2014/53/EU. All essential radio test suites have been carried out.

- CAUTION : RISK OF EXPLOSION IF BATTERY IS REPLACED BY AN INCORRECT TYPE. DISPOSE OF USED BATTERIES ACCORDING TO THE INSTRUCTIONS
- The device complies with RF specifications when the device used at 5mm from your body

FCC Warning:

This device complies with part 15 of the FCC Rules. Operation is subject to the condition that this device does not cause harmful interference. Any changes or modifications not expressly approved by the party responsible for compliance could void the user's authority to operate the equipment.

NOTE: This equipment has been tested and found to comply with the limits for a Class B digital device, pursuant to Part 15 of the FCC Rules. These limits are designed to provide reasonable protection against harmful interference in a residential installation. This equipment generates, uses and can radiate radio frequency energy and, if not installed and used in accordance with the instructions, may cause harmful interference to radio communications. However, there is no guarantee that interference will not occur in a particular installation. If this equipment does cause harmful interference to radio or television reception, which can be determined by turning the equipment off and on, the user is encouraged to try to correct the interference by one or more of the following measures:

- Reorient or relocate the receiving antenna.
- Increase the separation between the equipment and receiver.
- Connect the equipment into an outlet on a circuit different from that to which the receiver is connected.
- Consult the dealer or an experienced radio/TV technician for help.

Specific Absorption Rate (SAR) information:

This device meets the government's requirements for exposure to radio waves. The guidelines are based on standards that were developed by independent scientific organizations through periodic and thorough evaluation of scientific studies. The standards include a substantial safety margin designed to assure the safety of all persons regardless of age or health. FCC RF Exposure information and Statement The SAR limit of USA (FCC) is 1.6 W/kg averaged over one gram of tissue. Device types: T2 (FCC ID: 2AT7I-T2) has also been tested against this SAR limit. The highest SAR value reported under this standard during product certification for use at the body is 1.40W/kg. This device was tested for typical body-worn operations with the back of the device kept 10mm from the body. To maintain compliance with FCC RF exposure requirements, use accessories that maintain a 10mm separation distance between the user's body . The use of accessories that do not satisfy these requirements may not comply with FCC RF exposure requirements, and should be avoided.

Body-worn Operation

This device was tested for typical body-worn operations. To comply with RF exposure requirements, a minimum separation distance of 10mm must be maintained between the user's body and the device, including the antenna. Third-party belt-clips, holsters, and similar accessories used by this device should not contain any metallic components. Body-worn accessories that do not meet these requirements may not comply with RF exposure requirements and should be avoided. Use only the supplied or an approved antenna.

Designed by iFREE GROUP (HK) Limited  
Made in China

Warranty Card

Product Name: \_\_\_\_\_

Purchase Date: \_\_\_\_\_

Descriptions: \_\_\_\_\_

Name: \_\_\_\_\_

Mobile: \_\_\_\_\_

Mail: \_\_\_\_\_

Address: \_\_\_\_\_